

## Arawhata Bush Block planting 2022 & 2023

In 2022 the Arawhata Bush Block was extended and re-fenced. The extended area was in pasture and needed to be planted in native riparian vegetation. Figure 1 shows the areas planted in 2022 and 2023. Table 1 & 2 show the species and quantities of plants planted in these areas.

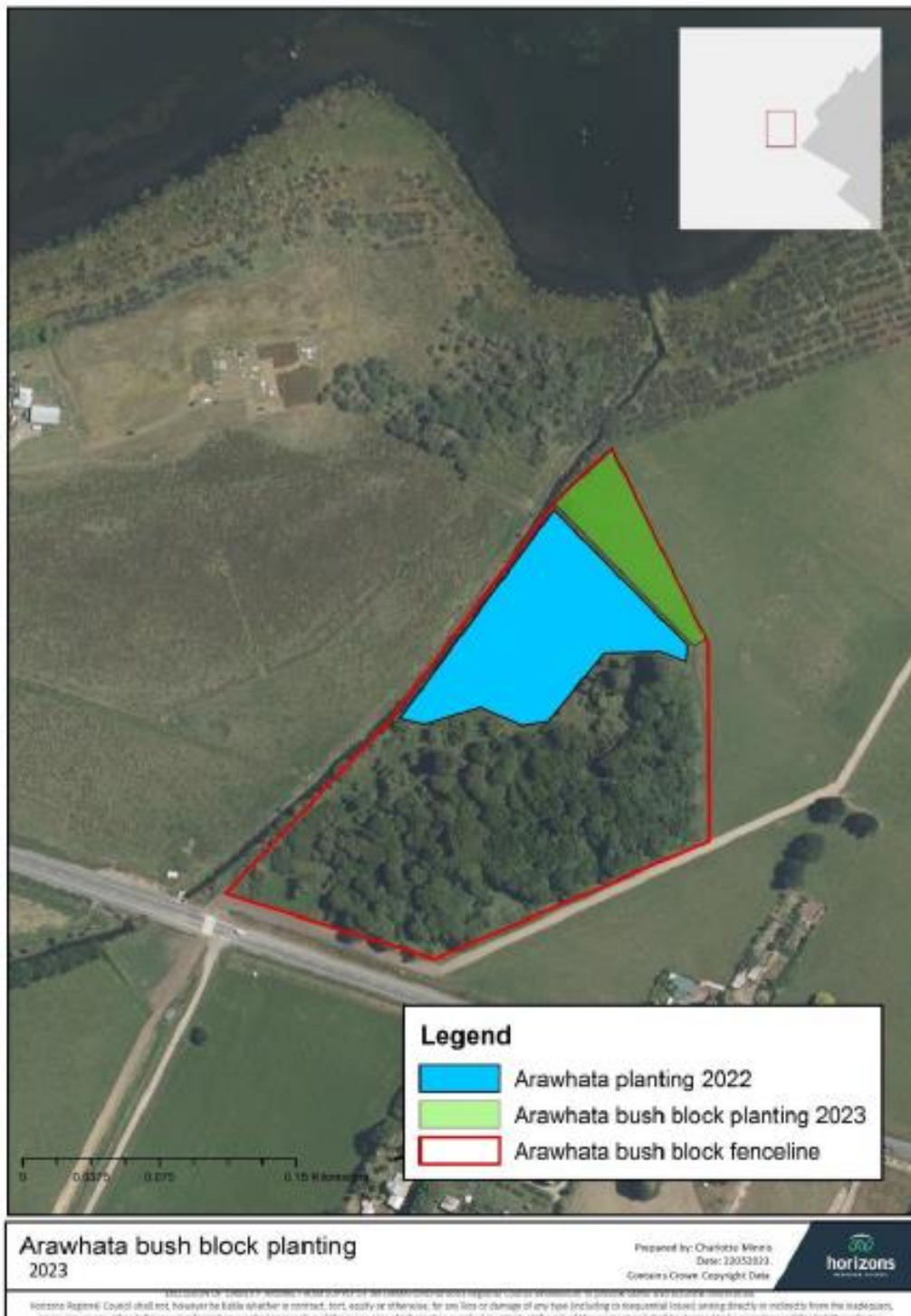


Figure 1. Map of Arawhata Bush Block plantings in 2022 & 2023

Table 1. Native riparian vegetation planted 2022

Plant species (2022)	Quantity
<i>Austroderia toe toe</i>	190
<i>Carex secta</i> (purei)	420
<i>Carex virgate</i> (swamp sedge)	100
<i>Coprosma propinqua</i> (mingimingi)	30
<i>Coprosma robusta</i> (karamu)	200
<i>Cordyline australis</i> (cabbage tree)	140
<i>Dacrycapus dacridioides</i> (kahikatea)	25
<i>Leptospermum scoparium</i> (mānuka)	150
<i>Olearia virgata</i> (coastal tree daisy)	90
<i>Phormium tenax</i> (harakeke)	320
<i>Pittosporum eugenioides</i> (lemonwood)	40
<i>Pittosporum tenuifolium</i> (kohuhu)	100
<i>Plagianthus regius</i> (ribbonwood)	100
<b>Total</b>	<b>1905</b>

Table 2. Native riparian vegetation planted 2023

Plant species (2023)	Quantity
<i>Austroderia Toetoe</i>	70
<i>Carex secta</i> (purei)	200
<i>Coprosma propinqua</i> (mingimingi)	55
<i>Leptospermum scoparium</i> (mānuka)	100
<i>Plagianthus regius</i> (ribbonwood)	50
<i>Carex virgata</i> (swamp sedge)	80
<i>Coryline australis</i> (cabbage tree)	130
<i>Oleria solandri</i> (coastal tree daisy)	20
<i>Phormium tenax</i> (harakeke)	260
<i>Pittosporum tenuifolium</i> (black matipo)	50
<b>Total</b>	<b>1015</b>