

# NGATI KAUWHATA SUBMISSIONS



Presentation to the  
**AFFCO MANAWATU HEARINGS**  
*Manfield Stadium, FEILDING*  
*Monday 14<sup>th</sup> November 2016*

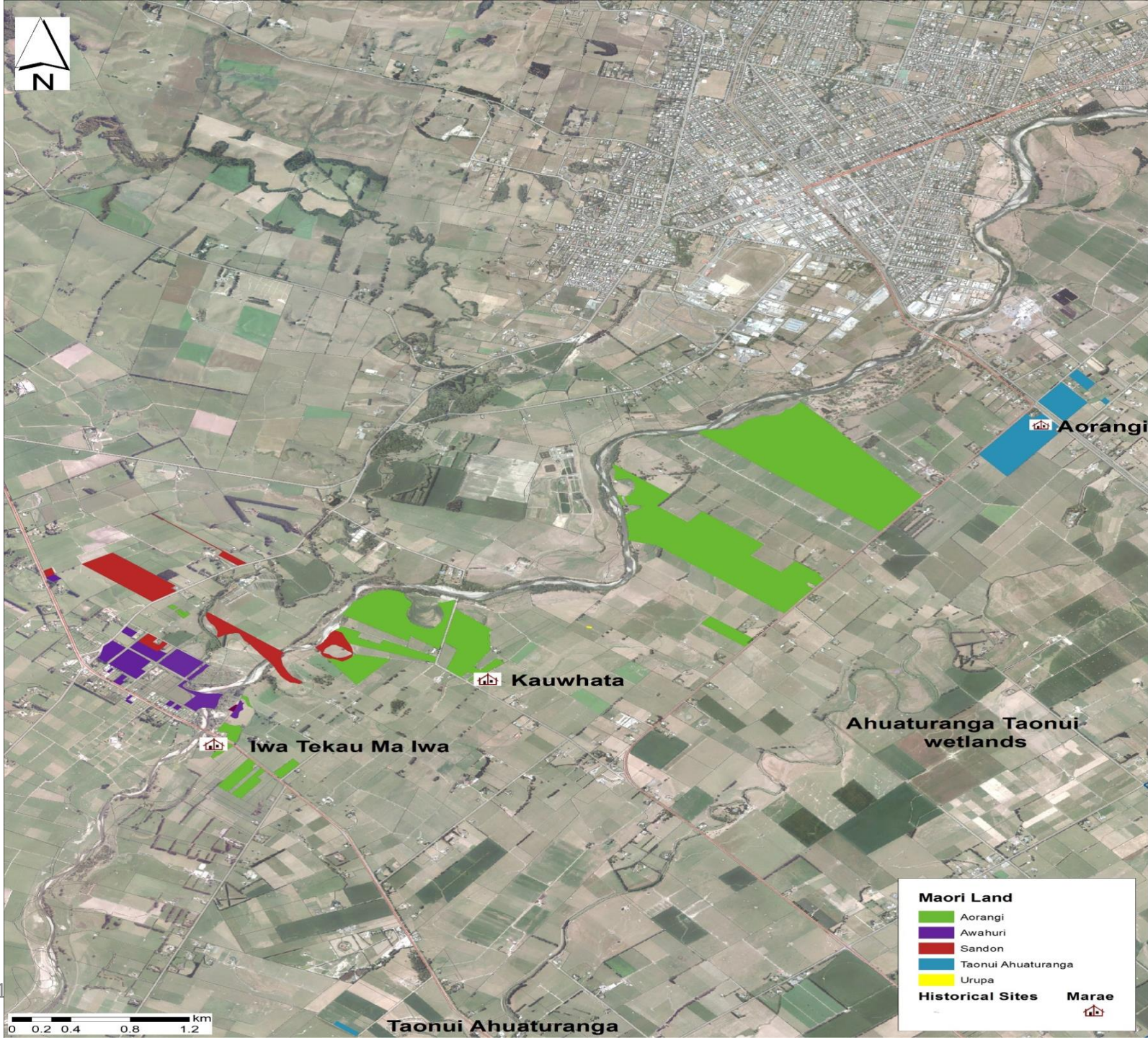
# Iwi Position & Stance

## **Presentation format:**

- 1. Affirm Iwi position**
- 2. Summary of evidence provided**
- 3. Additional information**

**NGATI KAUWHATA POSITION IS and REMAINS – Stop ALL discharge into the Oroua River period.**

**Participant in the Oroua River Catchment Care Group and the Manawatu River Leaders Accord!**



**Maori Land**

- Aorangi
- Awahuri
- Sandon
- Taonui Ahuaturanga
- Urupa

**Historical Sites**      **Marae**

# Foundations



21/11/2016



Affco Manawatu Presentation - Nov 2016

# Whanaungatanga

Manomano



Raukawa



Pare-wahawaha



Tikanga



Paranui



Te Hiiri



Poutu



Poupatate

21/11/2016



Rangimarie

Affco Manawatu Presentation - Nov 2016



Motuiti





**Marae Flood Damage – Feb 2004**



# Aorangi Bridge – new water main

# Oroua River under the Aorangi Bridge

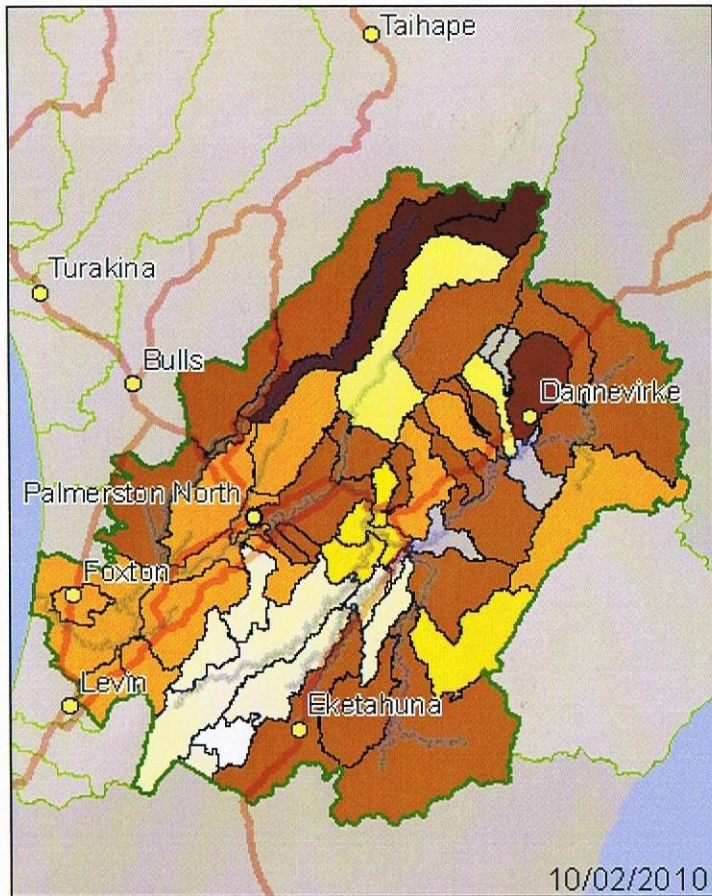




# Debris alongside Railway Bridge



Manawatu Catchment  
*E. coli*: Whole Record



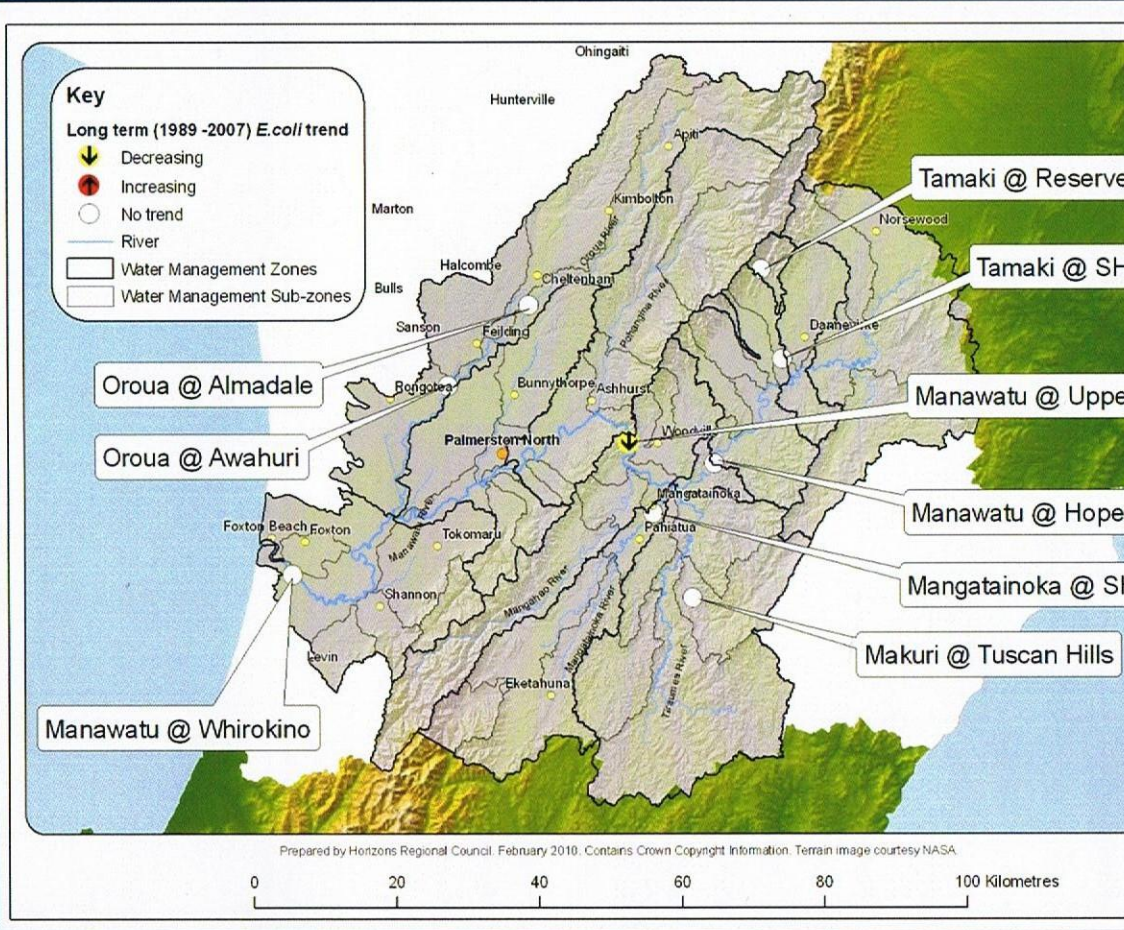
10/02/2010

Score



1 2 3 4 5 6 7 8 9 10 ND  
 1-4=Poor, 5-7=Fair, 8+=Good, ND=No Data

# Bacteria – *E. coli*



**Key**

**Long term (1989 -2007) *E. coli* trend**

- ↓ Decreasing
- ↑ Increasing
- No trend
- River
- ▭ Water Management Zones
- ▭ Water Management Sub-zones

Prepared by Horizons Regional Council, February 2010. Contains Crown Copyright Information. Terrain image courtesy NASA.

0 20 40 60 80 100 Kilometres

Mana\_12 - Oroua

Water Management Sub-zone

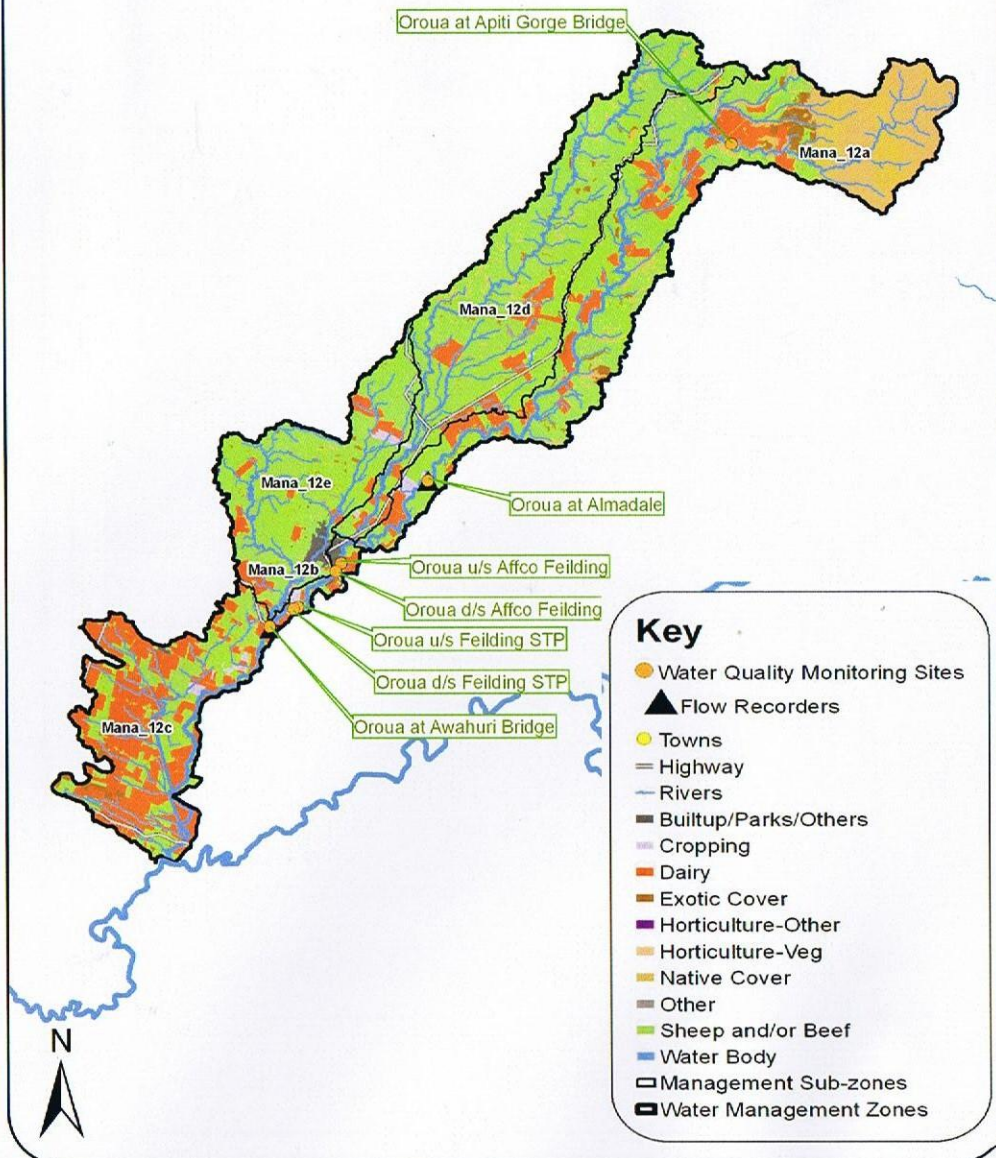
Mana\_12a - Upper Oroua

Mana\_12b - Middle Oroua

Mana\_12c - Lower Oroua

Mana\_12d - Kiwitea

Mana\_12e - Makino



Prepared by Horizons Regional Council, July 2008. Contains Crown Copyright Information.  
0 5 10 20 Kilometres

and State of the Environment monitoring sites on the Oroua River mainstem.

Sheep and/or Beef - 63%

Dairy Farming – 19.2%

Native cover – 13%



Monday, June 7, 2010

# Maori make claims to control river

Tribes want more say in managing the Manawatu River and restoring the quality of its water.

SEVERAL iwi in the region are making Treaty claims to try to take back more control over the Manawatu River.

The groups want the sick river cleaned up, with some believing they could do a

## High cost may be a barrier

SHARED management of the river will not happen if the Government gets its way because the cost involved is too high.

At the Environmental Defence Society conference in Auckland last week the Minister for Treaty of Waitangi Negotiations, Christopher Finlayson, said...



## Feilding Wastewater Treatment Plant On Kawakawa Road, FEILDING







# OROUA RIVER VALLEY

**During visit to Oroua Valley  
upper reaches**



**Stoat caught in Trap – Oroua  
Valley in May 13**



21/11/2016

Affco Manawatu Presentation - Nov 2016

16



# Signage Board – Oroua River Bridge, FEILDING



# *Regional basis*



- ***RELATIONSHIPS with neighbouring hapu and Iwi!***
- **Horizons Regional Council, DOC, TPK and Massey University**
- **He Pae Tawhiti – regional economic growth**
- **Connections with freshwater, recreational, customary and commercial fisheries organisations – Iwi, private & public!**

## **ISSUES facing Ngati Kauwhata & other Iwi**

- 1. Subject to Te Tiriti O Waitangi Claims**
- 2. Continued pollution & discharge into Oroua River**
- 3. Attitude & behaviour of LTA's – Manawatu District Council**
- 4. Imposition of “Rahui” by Ngati Kauwhata.**
- 5. Confiscation of Land for Fldg WWTP**
- 6. River Accretions Lands by nearby landowners**
- 7. Removal of shingle, rocks and stones from River bed**
- 8. Transferable water permits applying to Oroua River.**
- 9. Other point source discharges. E.g. Affco, Cheltenham, Kimbolton, Kiwitea and Halcombe etc.**
- 10. Establishment of co-governance committee for Oroua River**
- 11. Improving the water quality and downstream effects on other communities.**

# **NATIONAL BASIS**

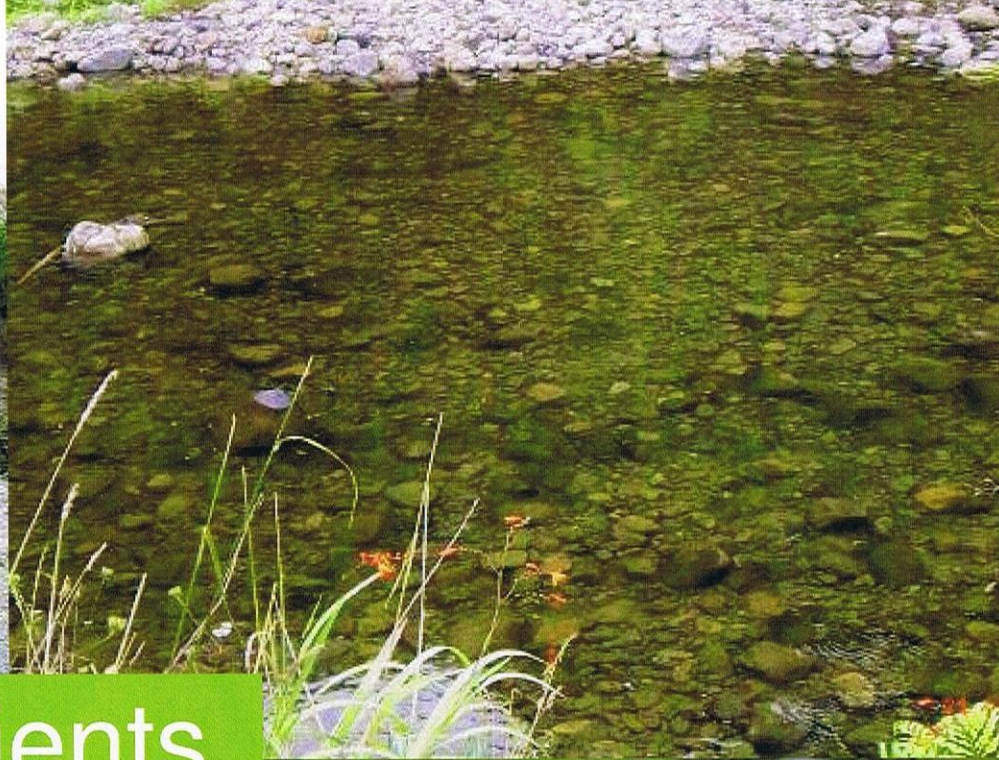
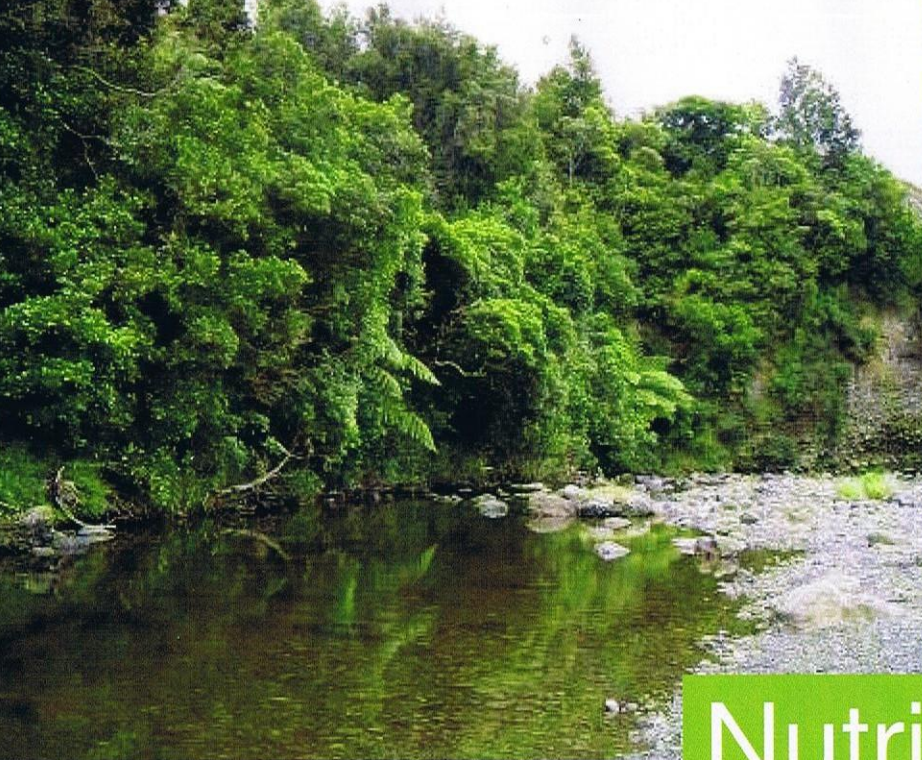
## **IWI LEADERS CHAIRS Freshwater Komiti**

### **NZ MAORI COUNCIL CASE Stage 2**

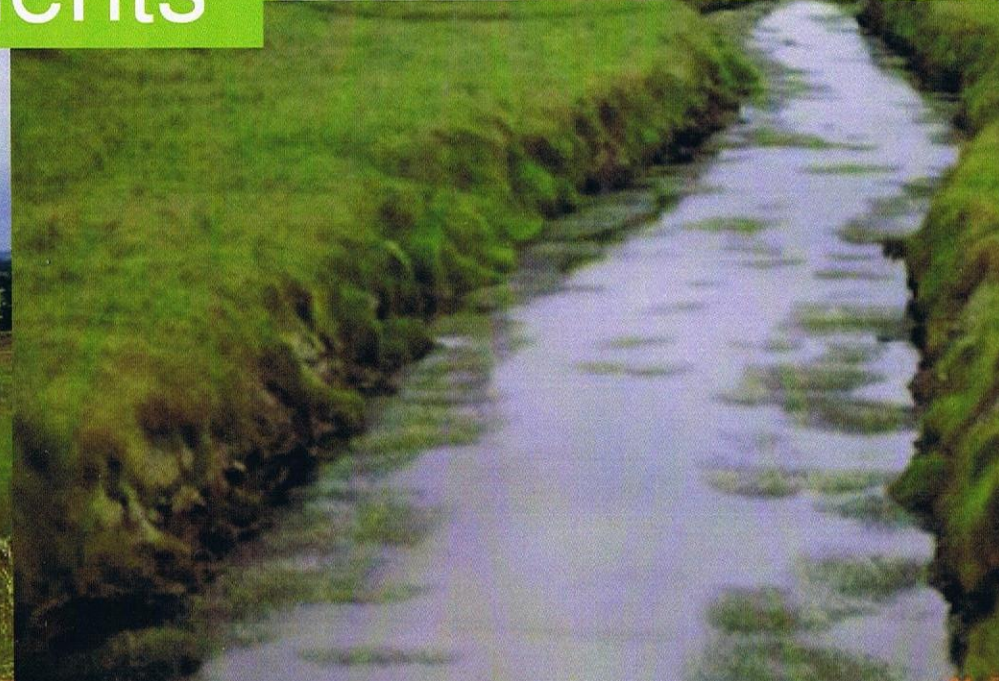
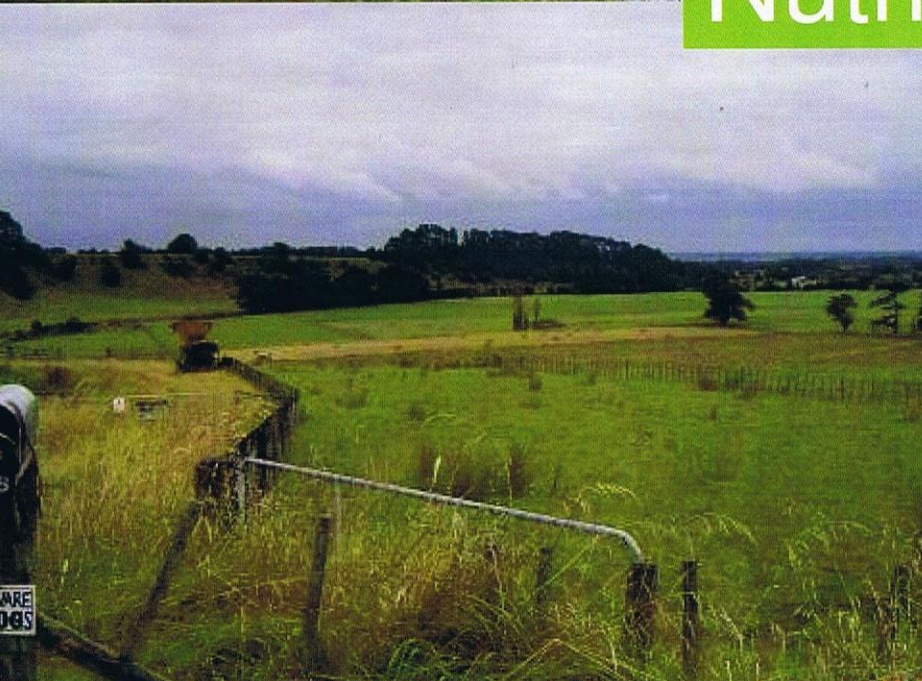
**Waitangi Tribunal – 7<sup>th</sup> Nov 16 at Waiwhetu Marae, WTGN**

## Kaumatua (Elders) PROTEST – 1968 near FEILDING





# Nutrients



**ANY QUESTIONS???**