

Figure 1: Location of the AFFCO Feilding site and surrounding features

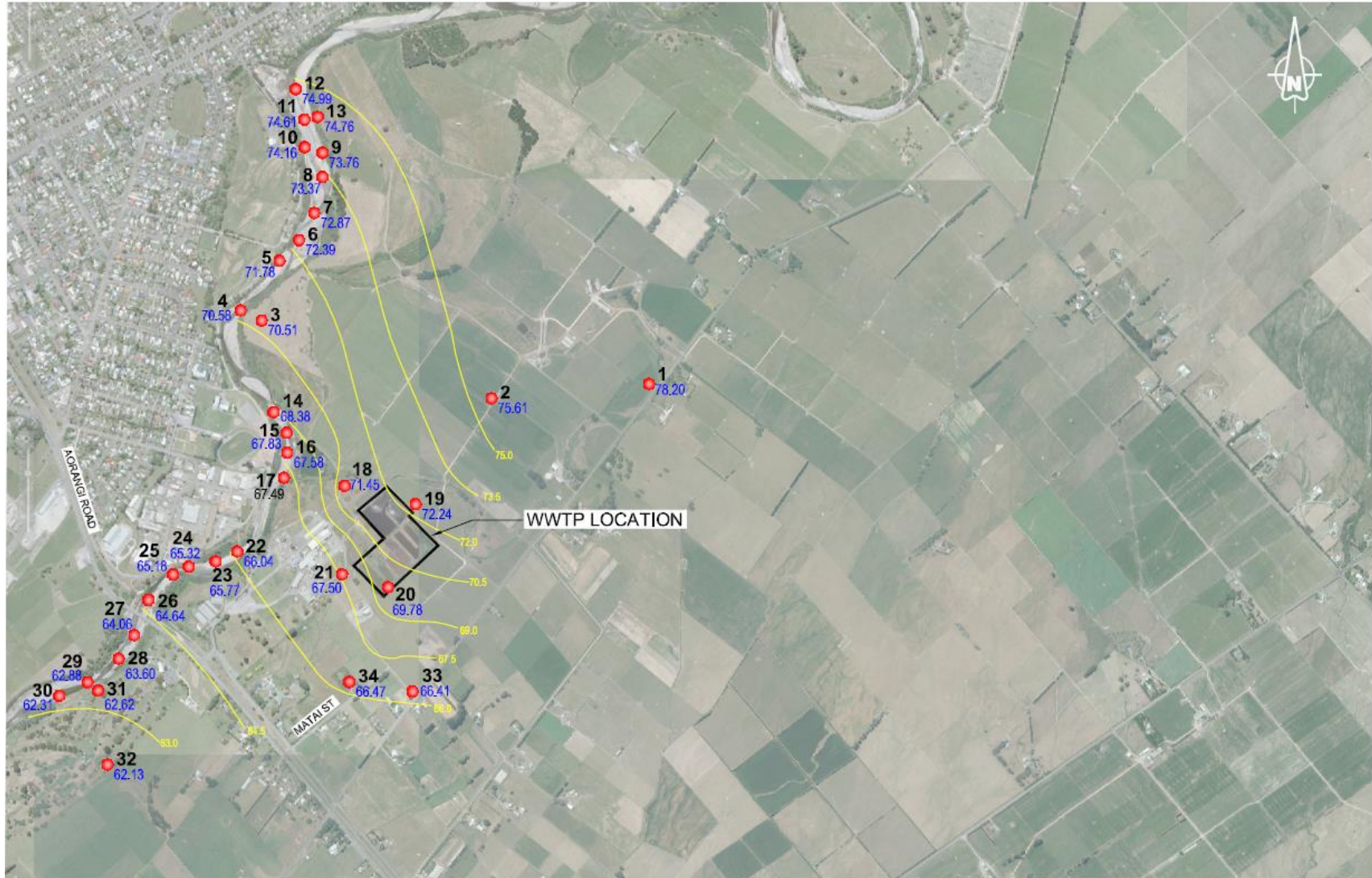
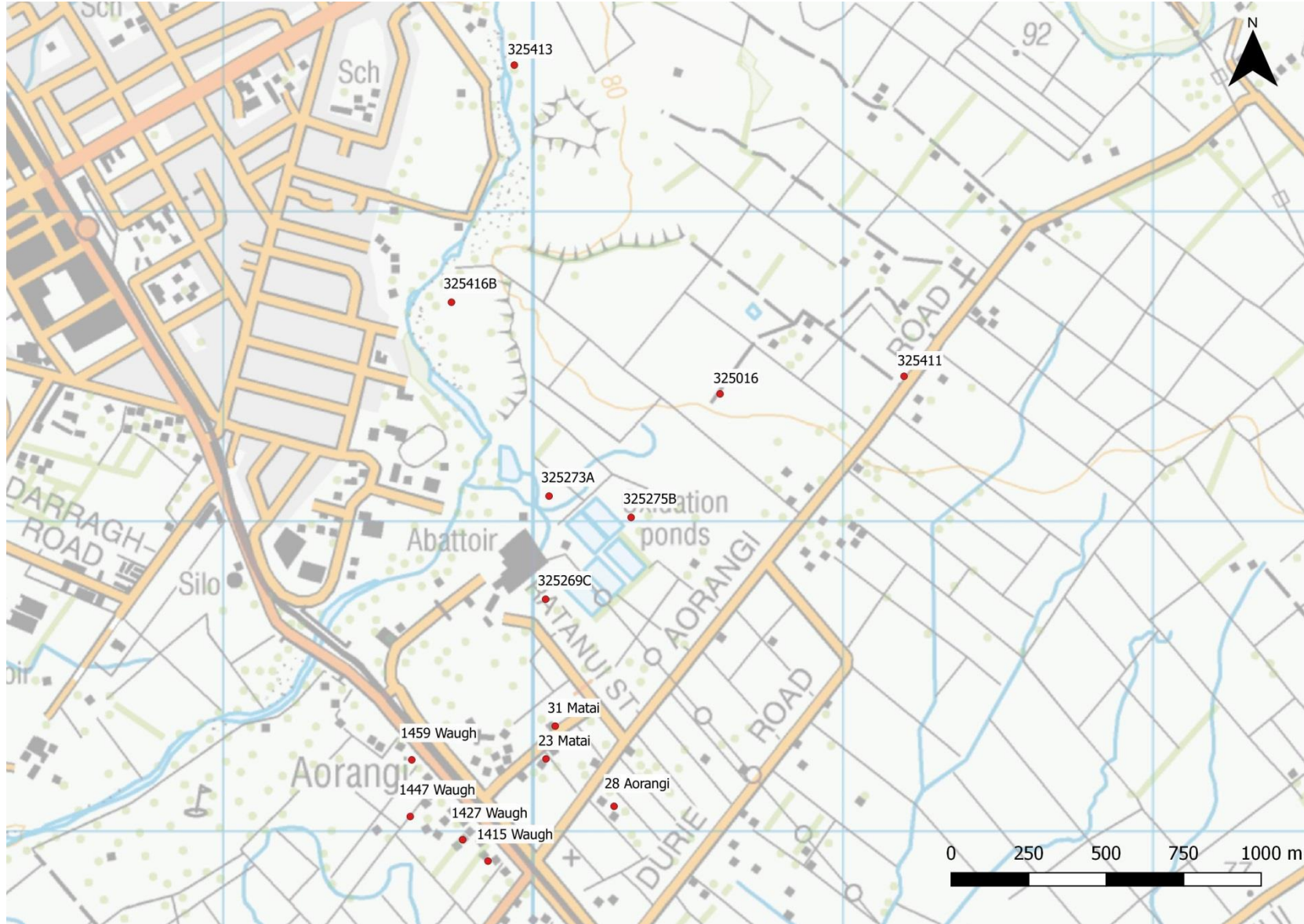


Figure 2: Shallow groundwater contours from June 2013 (Reproduced from LEI (2015))



**Figure 3: Location of monitoring bores around the AFFCO Feilding site**

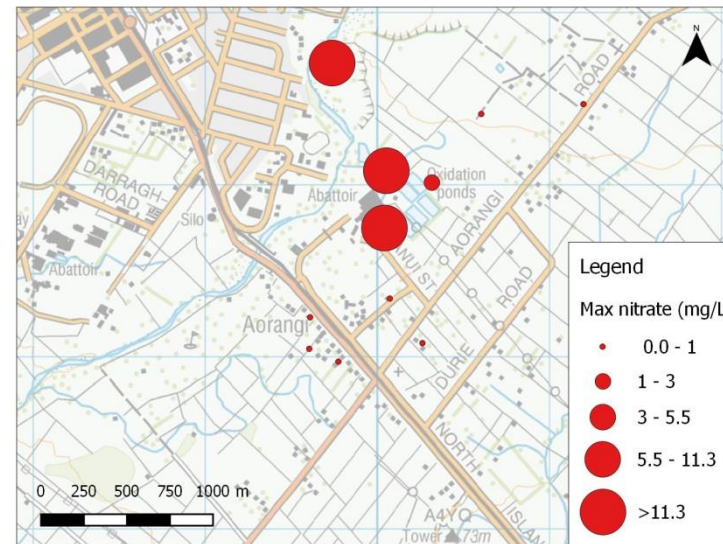
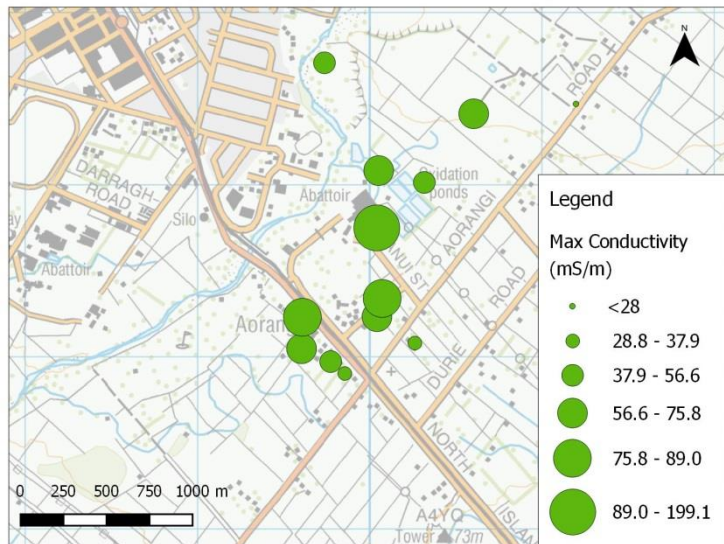
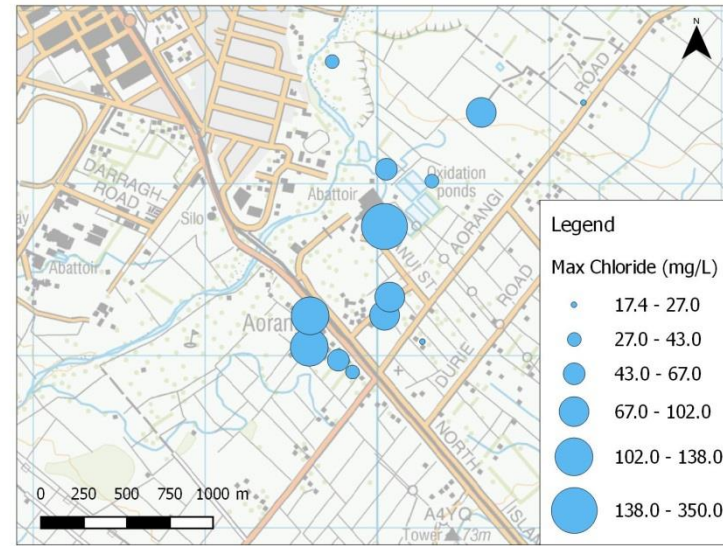
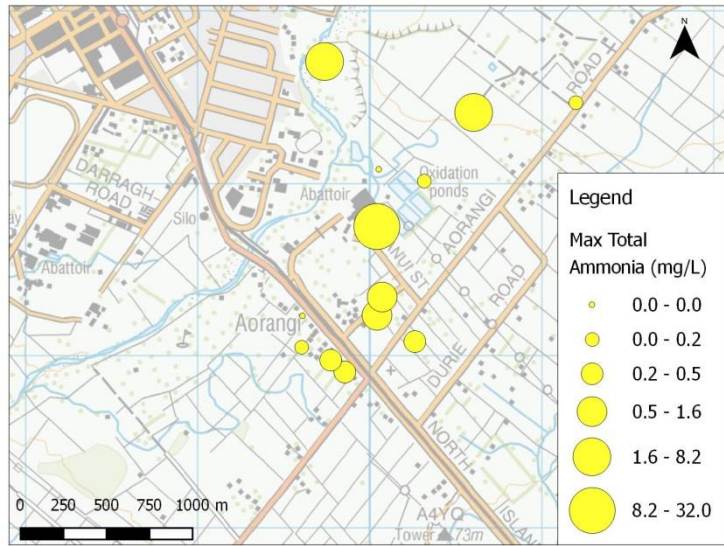


Figure 4: Spatial distribution of maximum groundwater quality samples

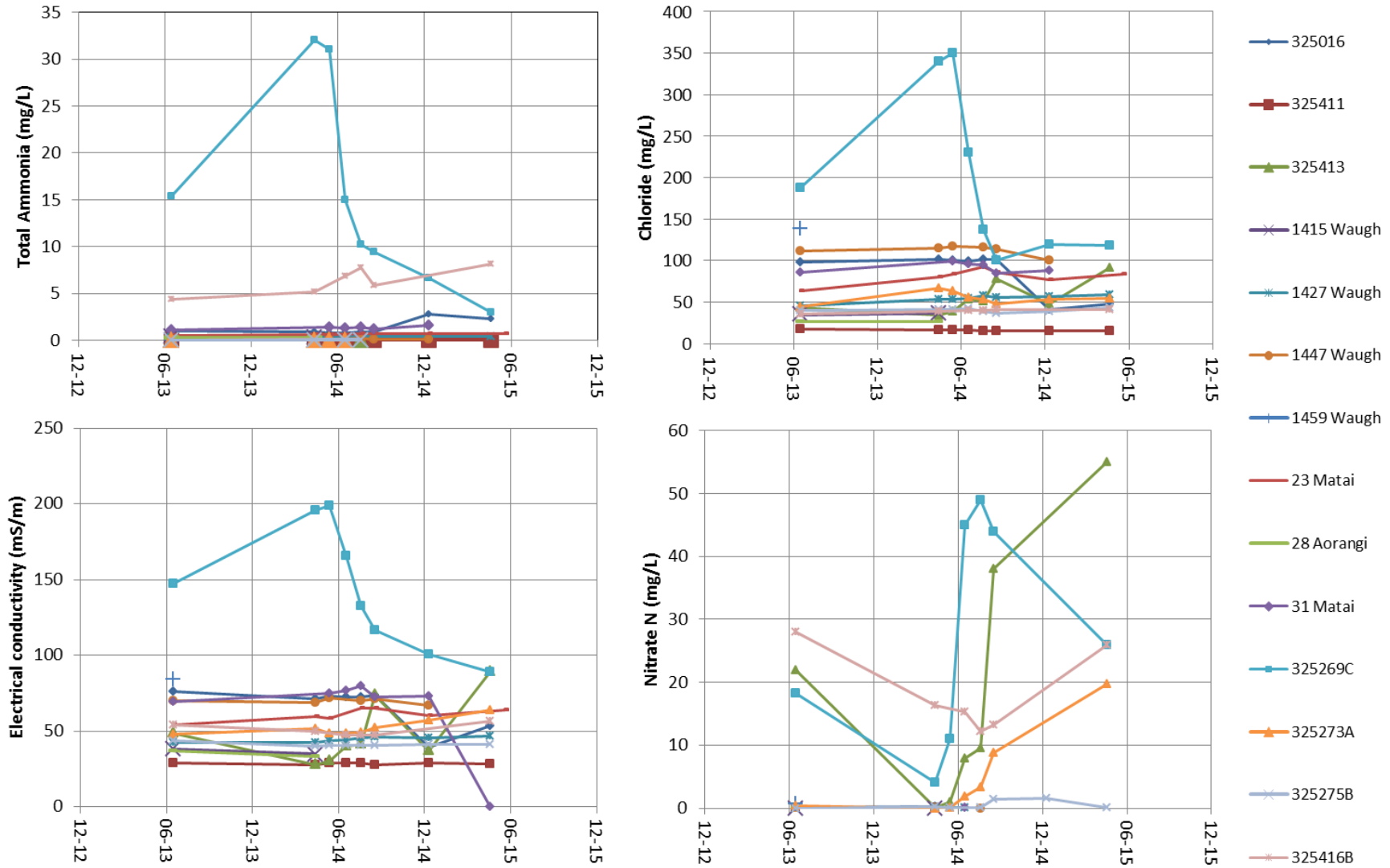


Figure 5: Timeseries of groundwater quality data from monitoring bores

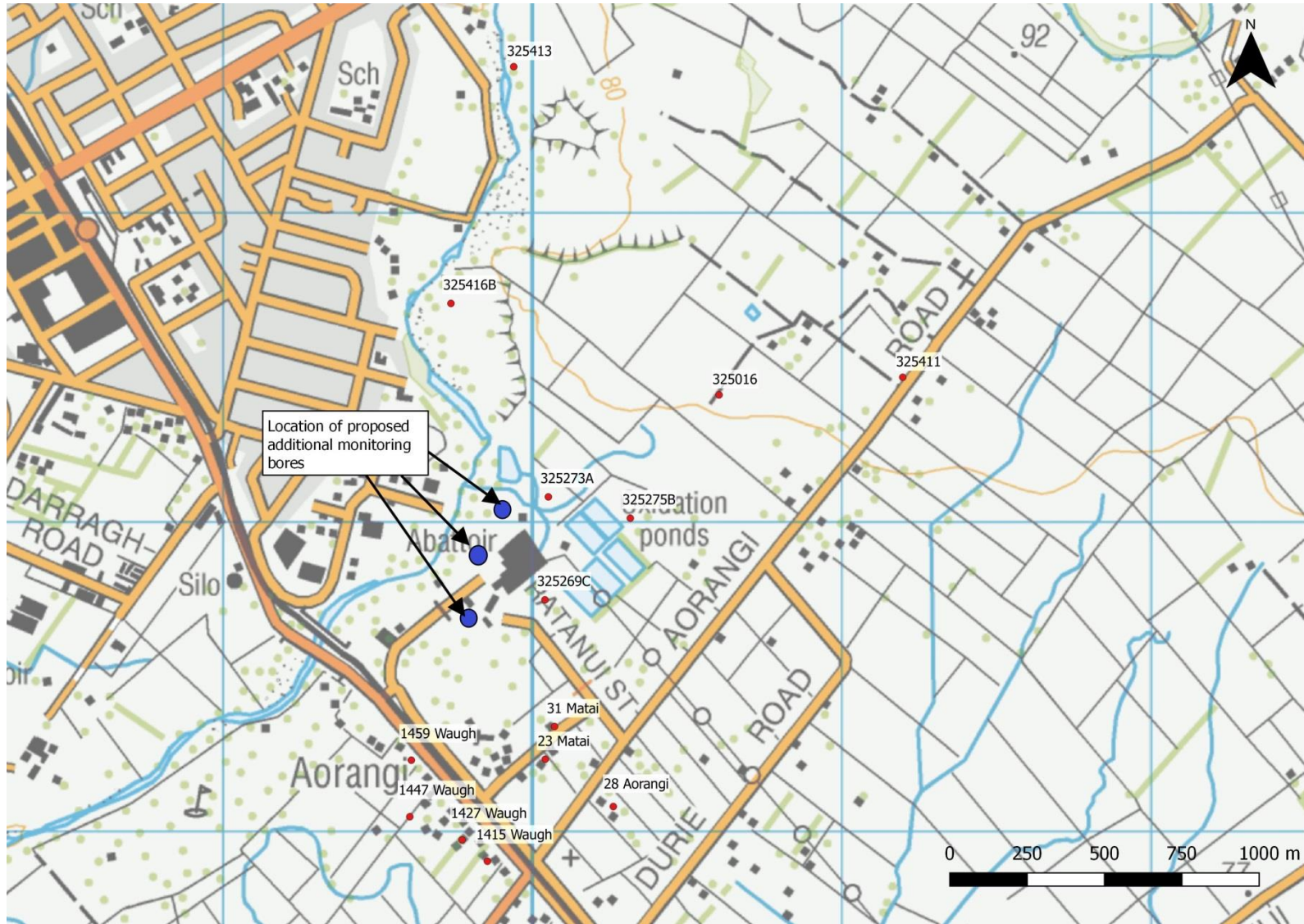
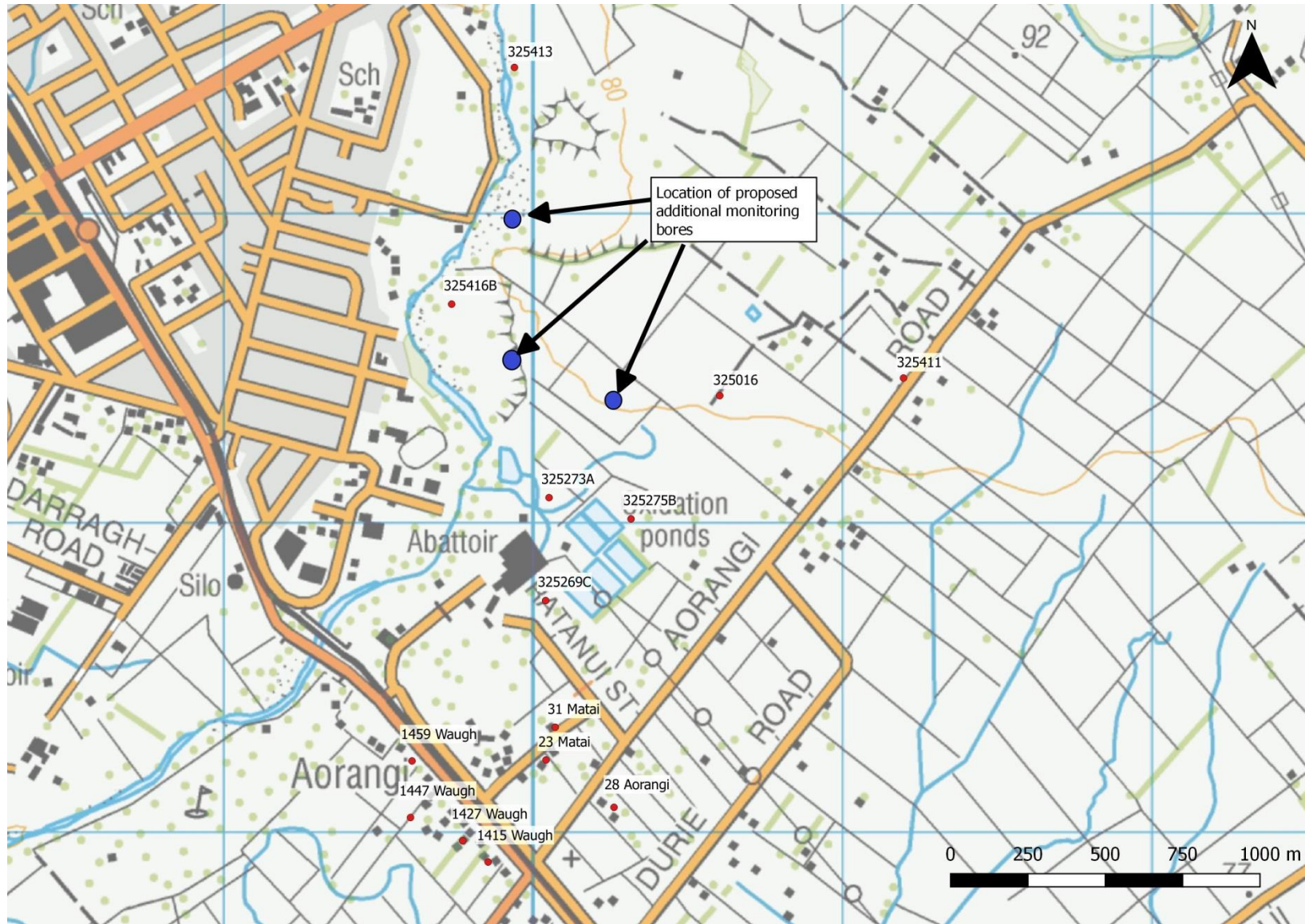


Figure 6: Location of proposed additional monitoring bores



**Figure 7: Location of proposed additional monitoring bores**