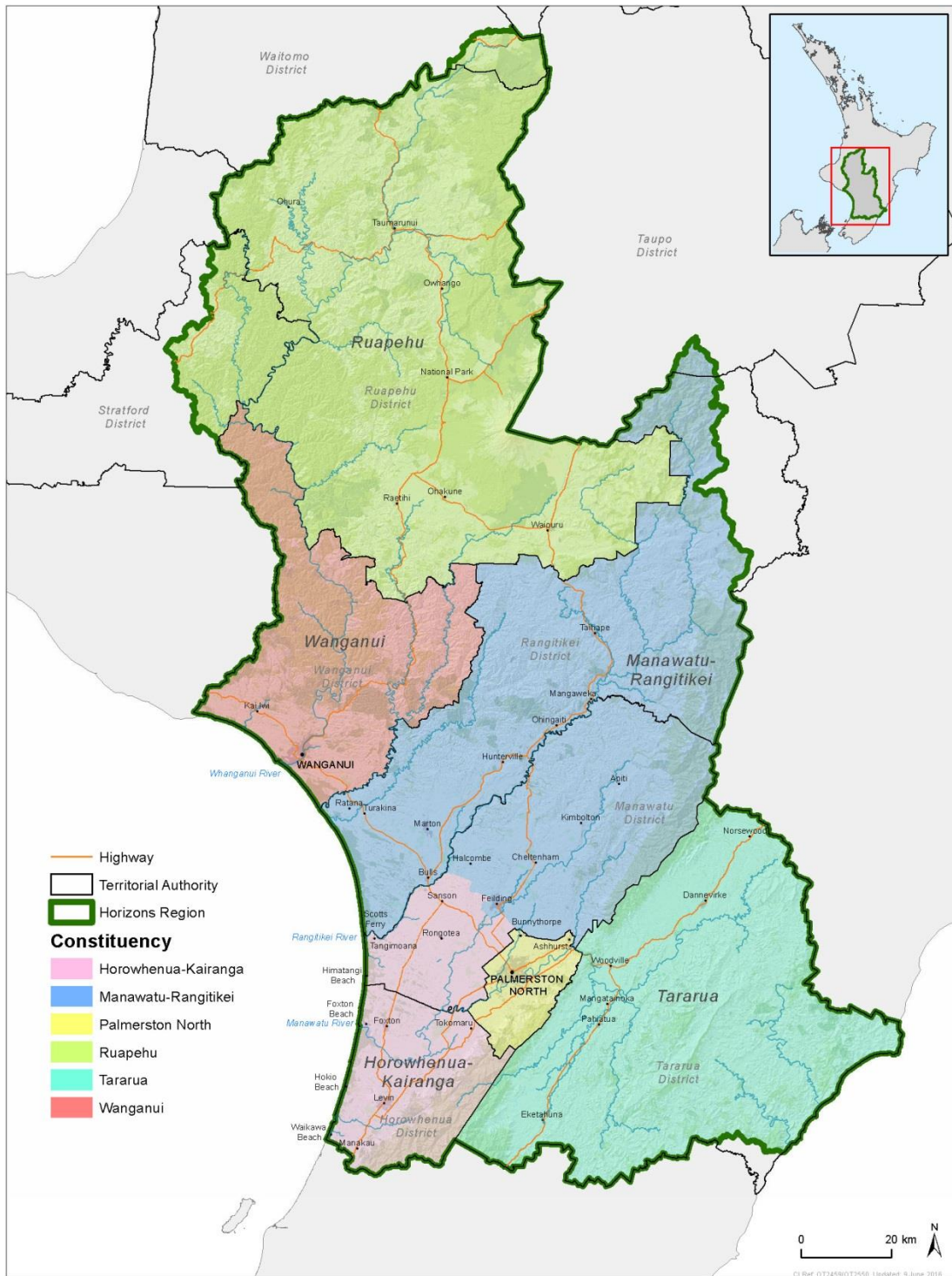


Horizons 2016 Constituency Boundaries

The Manawatu-Wanganui Region is divided into six constituencies.



Constituency	No. of Members	Estimated Population ⁺
Horowhenua-Kairanga	2	38,600
Manawatu-Rangitikei	2	35,500
Palmerston North	4	83,500
Ruapehu	1	12,650
Tararua	1	17,450
Wanganui	2	43,500
	12	231,200

The Horizons Region:

- Covers 10 local authorities, 7 completely within its boundaries
- Horizons' jurisdiction extends 12 nautical miles out to sea
- Covers 22,212 sq km of land, 8.1% of New Zealand's land area
- 160 km of coastline, with the Tasman Sea to the west and Pacific Ocean to the east
- Is home to approximately 231,200 people

⁺ Source: Statistics New Zealand as at 30 June 2013

Regional, city or district council – what’s the difference?

While your city or district council is responsible for community services in your area, like road maintenance, libraries, recreation areas, land use and subdivisions, your regional council manages the natural resources and does so across several city/district council boundaries. Because these activities often cover large geographic areas, Horizons manages them for the benefit of the whole region.

Although our roles are different, we work closely with city and district councils on some issues.



Find out more about us

Keep an eye out for Across the Region, our monthly publication, which features in local papers throughout the Region. Also check out www.horizons.govt.nz for the latest news and information.

What we do

Managing our environment

A large percentage of our work is done in this area. This covers five main activities: land management, water quantity and quality management, habitat protection, regulatory (resource consents and environmental compliance) and strategic management. Air, coast, pest plant and pest animal management strategies and waste issues are also part of this group of activities.

Keeping people safe

We have responsibilities to manage risk from natural and man-made hazards in the region. Our key role is to identify potential hazards and risks to people, property, infrastructure, the environment and the economy in five areas: Biosecurity, Tb vector control, river and drainage and emergency management.

Getting people places

We plan passenger transport services for the Region, subsidise bus services in areas where they cannot be provided commercially, manage the Total Mobility service which provides transport for people who are not able to use public passenger transport, organise community road safety education and activities, and coordinate the Regional Transport Committee.

Representing you

Horizons Regional Council comprises twelve councillors from six constituencies who are elected by the voting public every three years.

Councillors govern Horizons through committee and council meetings where they set policy direction and monitor the progress of Horizons' activities.

How you can get involved

We regularly go out to our communities asking for feedback on our regional plans and strategies. Visit our website www.horizons.govt.nz and check out the 'Consulting On' section on the front page for a list of current consultations.

You are also welcome to attend our Council meetings, generally held on the last Tuesday of every month at Regional House in Victoria Avenue, Palmerston North. Check the public notices section of your local paper or our website for dates and times.