



Kanorau Koiora Taketake - Indigenous Biodiversity Community Grant

Project Summary 2022/23

Front Cover Photo
Horizons Regional Council

CONTACT 24 hr freephone 0508 800 80

Help@horizons.govt.nz

www.horizons.govt.nz

SERVICE
CENTRES

Kairanga
Cnr Rongotea and
Kairanga-Bunnythorpe
Roads Palmerston North

Marton
19 Hammon Street

Taumarunui
34 Maata Street

REGIONAL
HOUSES

Palmerston North
11-15 Victoria
Avenue

Whanganui
181 Guyton Street

DEPOTS

Taihape
243 Wairanu Road
Taihape

Woodville
116 Vogel Street

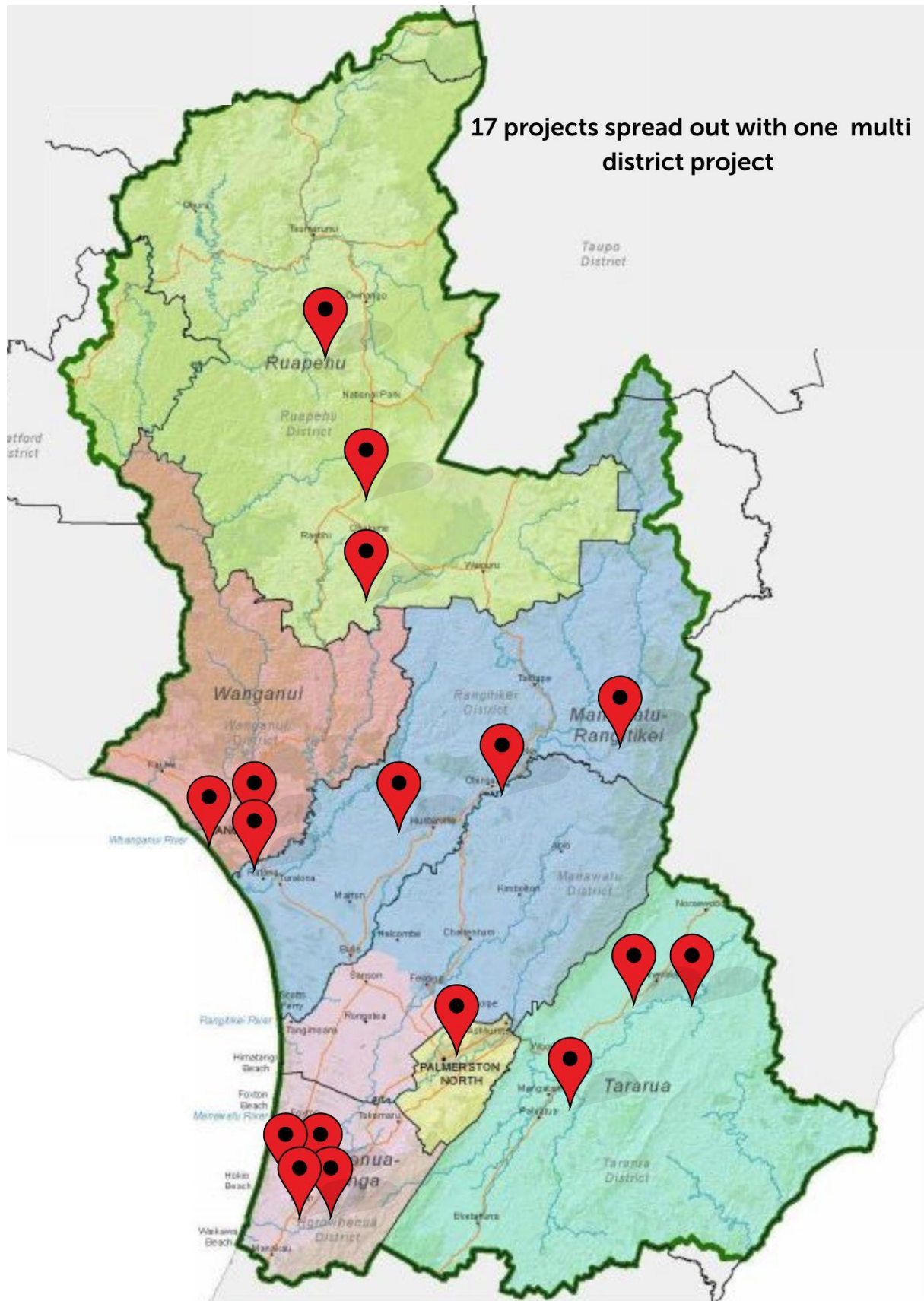
POSTAL ADDRESS Horizons Regional Council, Private Bag 11025, Manawatū Mail Centre,
Palmerston North 4442

F 06-952 2929

TABLE OF CONTENTS

	Project Summary Map.....	4
1	Awahuri Forest Kitchener Park Trust – Manawatū	5
2	Castlecliff Coastcare - Whanganui.....	6
3	Friends of Taihape - Rangitīkei	7
4	Gribble Family Trust - Whanganui.....	8
5	Ihaia Taueki Trust – Horowhenua	9
6	Koitiata Wetlands Restoration Group – Rangitīkei	10
7	Lone Pine Property Trust – Ruapehu	11
8	Makuri Catchment Care Group – Tararua	12
9	Manaaki Ruahine – Tararua	13
10	Ngawakahiamoe Bush Trust – Horowhenua.....	14
11	Pauro Marino Trust – Ruapehu	15
12	Ruahine Whio Protection Trust – Rangitīkei	16
13	Taumarunui Whakaarotahi Trust – Ruapehu.....	17
14	Te Kura Kaupapa Māori O Tupoho – Whanganui	18
15	Tripe Trustees – Rangitīkei	19
16	Waitahora Land Care Collective – Tararua	20

Project Summary Map



1 Awahuri Forest Kitchener Park Trust – Manawatū

Phragmites karka research, development and scale up to protect project – Awarded \$40,650 in Year 1 (2022-23)

Awahuri Forest Kitchener Park (AFKP) located just out of Feilding formally identified *Phragmites karka* in the precious wetland lowland native forest park in October 2020. *P.karka* is an aggressive pest plant that is quickly spreading into waterways. A very similar plant *P.australis* is identified for eradication by the Ministry of Primary Industries (MPI) National Interest Pest Response. Despite *P.karka* showing similar environmental risks it is not identified for any national or regional control strategy.

The grant has been allocated for two years to trial methods of control. The trials have been managed in collaboration with the AFKP Trust, Recreational Services, MPI and Horizons. Rigour has been placed on the methodologies to ensure outcomes can provide robust recommendations for *P.karka* management that can be implemented beyond AFKP.

The first year of exploratory trials has evaluated both control methods and the efficiency of their application. The continued trials have been narrowed to the following applications that will be included into the second year.

- Cut stems and dose immediately with 10mL AGPRO Steed* at 4 different concentrations
- Monthly ground level stem cuts using a mulching head or chainsaw September to February with regrowth sprayed with 15ml/L AGPRO Steed
- Aerial spray treatment with 15ml/L AGPRO Steed still to be determined

*AGPRO Steed contains Haloxyfop-P as the methyl ester.

Images: Just after treatment began (left) and completion of treatment (right).



2 Castlecliff Coastcare - Whanganui

Castlecliff Coastal Restoration Project – Awarded \$13,634

Castlecliff Coastcare are a dedicated group of volunteers who have been striving to conserve and restore the dunes on the northern beach area of Castlecliff since 2005. The group's key focus is replacing invasive weed species with native plants endemic to the area. They continue to provide education to community about the history, significance and restoration process of the dunes.

This year the group has continued to extend their spinifex and pingao planting, collecting seeds from the dunes to be grown and replanted. Volunteers also continue to mulch and release previous plantings to ensure a higher survival rate. Castlecliff hosts several working bees each year, with new and regular volunteers returning to lend a hand.



3 Friends of Taihape - Rangitīkei

Taihape Willow Removal from Hautapu River Stage 2 Project – Awarded \$23,828

Friends of Taihape have continued their project removing willows from the Hautapu River. The aim of the project is to restore the river to its natural state, minimise future flooding and its impact on the reserve, and provide a better experience for the users of the Reserves. Contractors have been engaged to complete the initial removal, with volunteers following up to control regrowth. 75% of the project was completed, with the remainder unable to be completed due to unusual summer weather. The remaining work will be completed over the 2023-24 summer period.

Willow control is only a portion of the group’s plans, with future goals including replanting, further pest plant control and increased recreation opportunities in the Reserves.



4 Gribble Family Trust - Whanganui

Wetland Restoration Project – Awarded \$3,763

Gribble Family Trust have embarked on a wetland restoration project in Whanganui. The goal of the project was to remove gorse, blackberry and wilding pines from the wetlands and to plant native species in their place, with assistance from Brunswick School. A trap line has been started to protect the native birds, including spotless crane and fernbird, inhabiting the wetland and surrounding regenerating bush.

Pest and predator control work will continue, with more native trees to be planted in the upcoming year.



5 Ihaia Taueki Trust – Horowhenua

Restoration of the Wetland & Sand Dunes at Horowhenua A6B Project –
Awarded \$5,000 in Year 1 (2022-23)

Restoration of the Wetland & Sand Dunes at Ohita Lagoon Project –
Awarded \$36,520 in Year 1 (2022-23)

The moemoeā (vision) for the Ihaia Taueki Trust’s wetland and dune restoration projects is to bring the iwi, hapū, whānau and community together to create something that will benefit everyone – past, present and future.

The fencing at Ohita Lagoon was unable to go ahead due to challenges extenuated by a very wet summer. This Project has been put on hold with the plan to revisit it at the conclusion of the Horowhenua A6B Project.

Horowhenua A6B is just over 8ha of wetlands and sand dunes fenced off in 2020 with support from the farm lessee. Dune Forests in the Horizons Region have suffered an incredible loss, with less than 0.2% of the original cover remaining.

This year another 1000 native plants were planted at a very successful planting day. Year 2 of this project will see more plantings and the releasing of existing plants from competition with weeds.



6 Koitiata Wetlands Restoration Group – Rangitīkei

Koitiata Wetlands Restoration Project – Awarded \$9,830

Working alongside Rangitīkei District Council, Ngāti Apa, Earnslaw (Santoft Forest) and Landbased Training, the Koitiata Community have continued their work to restore and protect the Koitiata Wetlands. More than 700 volunteer hours have been spent on weed and predator control this year, with support from contractors to undertake drone-spraying of weed infestations. Control has targeted willows, poplars, agapanthus and pampas, with a high level of success (see before and after pictures of pampas spraying below).

The Community intend to continue to build on the progress achieved in the last few years with further weed control and an expanded trapping network.



7 Lone Pine Property Trust – Ruapehu

Maunga Tia Kiwi Restoration Project – Awarded \$27,000

The mahi from the Trust continues this year at Maunga Tia in the Ruapehu district. The improvements from the additional traps and from the dedicated routine servicing of them is providing a special environment for both native wildlife and the many people visiting. The funding this year was used to purchase 50 x AT220 auto traps to add to their trapping network, 12 x trail cams and 2 x bat recorders.

The decreasing number of possums and rats has resulted in the first siting of spotted whiteheads/pōpokotea in the core trapping area. The trail cameras highlighted the number of kiwi and prompted a kiwi monitoring survey. The survey results returned an amazing 7 calls per hour across the farm (NZ average is typically 3 to 4). Bats have been spotted and the monitors purchased will survey the area in spring.

To continually upgrade the trapping network the Trust has developed Maunga Tia branded meat rubs that are sold specifically to purchase more traps.



8 Makuri Catchment Care Group – Tararua

Old Man’s Beard (*Clematis vitalba*) Survey – Awarded \$5,000

The Makuri Gorge Scenic Reserve is a very steep 175.3ha (including surrounding blocks) reserve of native forest. It is predominantly tawa-titoki podocarp forest, with patches of nikau dominated forest, as well as mountain flax covered limestone bluffs. The Makuri River and the Pahiatua-Pongoroa Road run through the reserve, providing a pathway for a number of weeds into the reserve. The Makuri Catchment Care Group are concerned about the long term health of the reserve due to the continuing pressure of weeds coming from outside the reserve. The group therefore have conducted an aerial survey to better understand the extent of the infestation. The survey identified significant old man’s beard infestations, and allowed their location and size to be mapped.

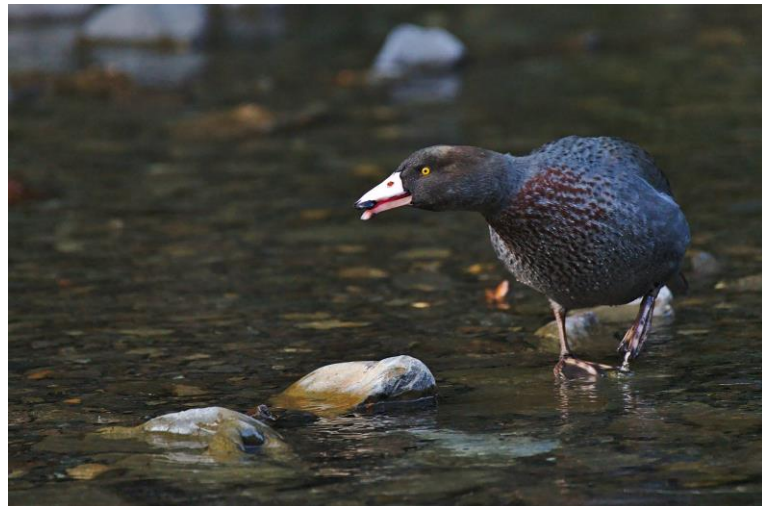
This information, alongside knowledge from Horizons biosecurity staff and contractors, will help scope the control stage of the project.



9 Manaaki Ruahine – Tararua

Makaretu Restoration Project – Ngamoko/Norsewood Trapline Section –
Awarded \$2,069

Manaaki Ruahine aimed to place AT220 traps at the source of the Manawatū River to help control possums, rats and mustelids. Supported by a dedicated volunteer base, hapū and the owners of the adjacent farm the traps have been serviced six times since their installation. The traps allow the group to gather good data to inform their servicing schedule, and to confirm whether traps have been set in a suitable location. Since their installation in November 2022 the four traps have removed 74 possums and 74 unidentified small animals. One trap has been moved further up the valley after having significantly reducing the number of pests in the area, reflected in a very low kill rate after an initial peak. E-DNA surveys completed in this stretch of the Manawatū River recently have identified whio twice.



10 Ngawakahiamoe Bush Trust – Horowhenua

Ngawakahiamoe Bush Track Maintenance Project – Awarded \$640 in Year 1 (2022-23)

Ngawakahiamoe Bush Signage Project – Awarded \$1,650

Existing vehicle tracks were mowed this year at Ngawakahiamoe Bush to allow access for planting, weed control and servicing of traps by contractors and volunteers. The access granted by the maintenance of these tracks contributes to the ongoing conservation of this important piece of forest. This project has been granted three years of funding.

Ngawakahiamoe Bush Trust has also begun work creating signage for the bush to encourage visitors to connect with the site. Working with tangata whenua the Trust have named tracks and other special features of the bush. Totara batons salvaged from old fences that would have originally been felled from Ngawakahiamoe are being inscribed with the messaging. Additional signs will continue to be added to the collection.



11 Pauro Marino Trust – Ruapehu

Pae Mahara Fencing and Restoration Project – Awarded \$17,040

Pauro Marino Trust have a Tawahi (beech) dominant bush remnant. Many hours of volunteer aroha has contributed to this ngahere including digger work, planting to restore the stream bank, planting the ngahere, and clearing the walkway. Some trapping was carried out but there is little evidence of pest presence.

Contributions were from Te Kura Kaupapa Maori o Ngati Rangi, Manu Korero Kohanga Reo, Maungarongo Marae whanau, Pauro Marino whanau, Ngati Rangi Taiao, Ruapehu Worx, Megan Younger, Trish & Graham Walker, Rita Hammond, Matt Mareikura, Richard Mareikura, Richard & Patty Carmichael, and Richard Dean.

Pauro Marino Family and Maungarongo Marae will continue maintenance using the brushcutter purchased, and work with Horizons to control old man’s beard to revive the natural beauty of the Ngahere.



12 Ruahine Whio Protection Trust – Rangitīkei

Te Potae O Awarua and the Pohangina River Projects – Awarded \$12,000 in Year 2 (2022-23)

This is the second year of funding for the Trust who run two projects that are located in remote locations. Funding provided supports checking and rebaiting of the traps by flying members of the local community in by helicopter.

The Te Potae O Awarua Projects in the North Western Ruahines. The aim of the project is to increase numbers of whio and kiwi while providing opportunities for volunteers and iwi to be involved in a unique landscape. They aim to have 7 trap checks per season. The second project is the Pohangina Rivers project which is located in the Southern Ruahines where 170 traps over 15km of the river have been installed. Traps are required to be serviced a minimum of twice a year.

This year has presented many challenges with high river levels, continuous bad weather and Cyclone Gabrielle. The cyclone had a significant impact on the river beds and huts in the area. The team has managed to rebait four times this year at Te Potae O Awarua however sadly a number of traps along the river have been washed away. The Pohangina River has only had the upper river traps serviced early in the season but all traps have since been serviced in May and June with an audit done. Some traps have been buried and washed away but the line of A24 traps has held up remarkably well.

This year's fund was underspent but will be used in the third year of funding provided. There is a planned DOC 1080 Wild Animal Control Operation planned for spring this year and if successful could lower mustelid numbers with the potential of less trap checks in the future. There has also been a kiwi release of 19 juvenile kiwi from Cape Sanctuary in the Potae/Lake Colenso area.



13 Taumarunui Whakaarotahi Trust – Ruapheu

Manunui Walkway Project – Awarded \$9,000

The Trust are developing the walking track that runs along the Whanganui River from CKC Sawmillers Grove (south Taumarunui) to Mahoe. There is a supportive collaboration between the Trust and Land Based Training where students are gaining skills they can use on the walkway project. The intention is to restore the walkway and encourage community use.

Funding was used to setup equipment to enable ongoing walkway works. This included purchasing weed eaters, spray units, chainsaws and safety gear; plus equipment to set up a nursery to grow plants.

Progress has been made along the walkway by spraying all the blackberry, clearing some trees and cutting back the long grass. A weekly work group has started and they will continue maintenance with weeding, pruning, spraying, planting of natives and rubbish collection.

Future plans include continued support of the maintenance programme plus the installation of signs telling historical stories about this part of the Whanganui River.



14 Te Kura Kaupapa Māori O Tupoho – Whanganui

Te Pae Maharahara – Native Planting Habitat for Biodiversity, Rongoā and Environmental Education – Awarded \$5,000

Te Kura Kaupapa Māori O Tupoho have an ongoing project they have been working on since 2021 they received funding from Horizons and One Billion Tress Programme to establish a large outdoor learning area and memorial garden Te Pae Maharahara. 600 native trees were planted in 2021 into the area along with the purchase of tools to maintain gardens and supervisor to mentor over this space.

Funding for supervisor ongoing support to keep this project on track was not funded in 2022 so the project has been unable to be sustained to the same level, however despite this they have established well.

They did receive funding for two rainwater tank pumps and one tank cover. These have been installed by the kura in late November 2022. They have also started to plant out the gully and these are also establishing well. They have received a donation of large tree trunks from Pīwakawawaka Farm which have been used as table and seats for an outdoor learning area.

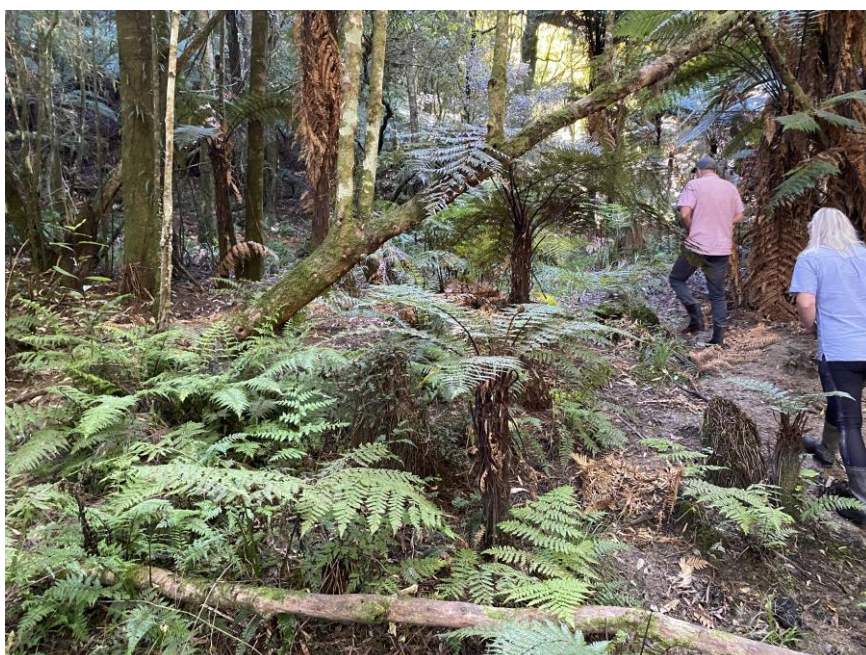
This area will continue to be cared for by the kura.



15 Tripe Trustees – Rangitīkei

Pest Management in Mangatipona Stream Valley Project – Awarded \$5,000

The Tripe family have embarked on a wide ranging long-term environmental project to enhance the biodiversity areas on their property. Part of this work has involved establishing a trapping network to target the mammalian predators known in the area. Work to further restore and protect blocks of native bush is ongoing.



16 Waitahora Land Care Collective – Tararua

Invasive Weed Protection Project – Awarded \$18,900

Waitahora Land Care Collective are taking on old man’s beard control in the Waitahora Catchment. Horizons staff led a training day to help landowners correctly identify and control the pest plant. The group engaged contractors to tackle the dense infestations, with landowners following up to control smaller sites and regrowth. Another year of assistance by contractors is intended to bring the density down to a level manageable by the Collective and wider community.





horizons
REGIONAL COUNCIL



horizons.govt.nz

24 hour freephone 0508 800 800

fax 06 952 2929 | email help@horizons.govt.nz

Private Bag 11025, Manawatu Mail Centre, Palmerston North 4442