

Schedule Ba: *Water Management Zones** and Associated Values – Surface *Water*[^] and Groundwater

☰ SCHEDULE Ba TABLE OF CONTENTS:

| <u>Page Numbers</u> | <u>Section</u> |
|------------------------|---|
| <u>Ba-1 – Ba-29</u> | <u>PART Ba1: <i>Water Management Zones*</i></u> |
| <u>Ba-2 – Ba-4</u> | <u>Ba1.1 Surface <i>Water Management Zone*</i> catchment finder</u> |
| <u>Ba-5 – Ba-26</u> | <u>Ba1.2 Surface <i>Water</i>[^] Management Sub-Zones (WMSZ) listed by catchment</u> |
| <u>Ba-27 – Ba-29</u> | <u>Ba1.3 Groundwater Management Zone (GWMZ) finder</u> |
| <u>Ba-30 – Ba-141</u> | <u>PART Ba2: Surface <i>Water</i>[^] Management Values</u> |
| <u>Ba-30 – Ba-43</u> | <u>Ba2.1 Surface <i>Water</i>[^] Management Values listed by Sub-zone</u> |
| <u>Ba-44 – Ba-141</u> | <u>Ba2.2 How and where specific <i>Water</i>[^] Management Values apply</u> |
| <u>Ba-142 – Ba-143</u> | <u>FOLD-OUT <i>WATER</i>[^] MANAGEMENT VALUES KEY¹</u> |

USER GUIDE: How to use the contents of this schedule

Step 1: Locate which WMSZ/GWMZ your proposed activity is in

Step 2: Identify which Surface *Water*[^] Management Values apply to your WMSZ

¹ Note to the Hearing Panel: This key is conceptualised but has not been fully designed to work as it would in the plan as yet

Management Zones and Sub-zones



Map D:1 Water Management Zones in the Manawatu-Wanganui Region

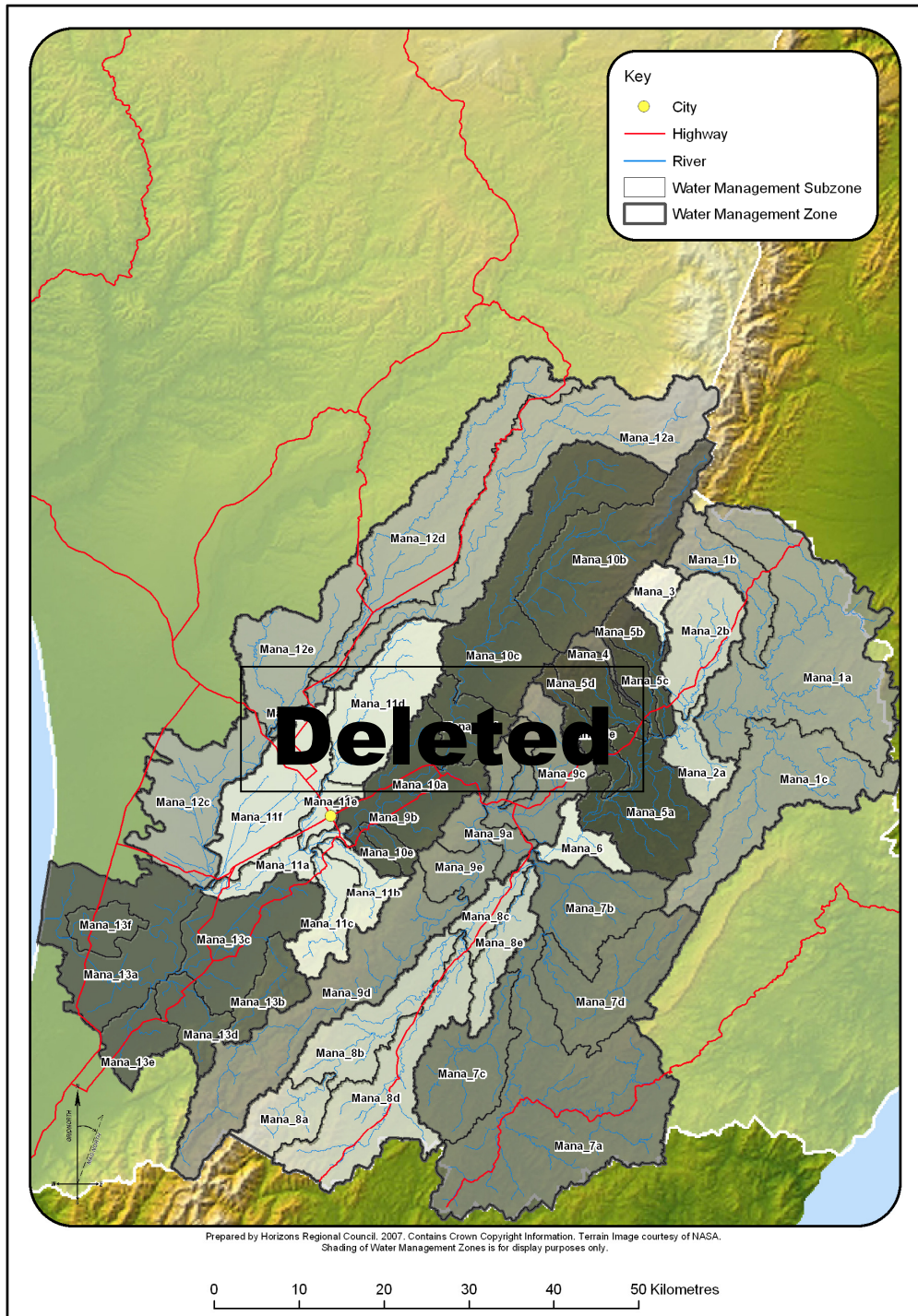
PART Ba1.1: Surface Water Management Zone* Catchment Finder



Map Ba 1: Catchment Finder - showing parent catchments for each of the Surface Water Management Zones* in the Region (refer to table Ba1 for Water Management Zone names).

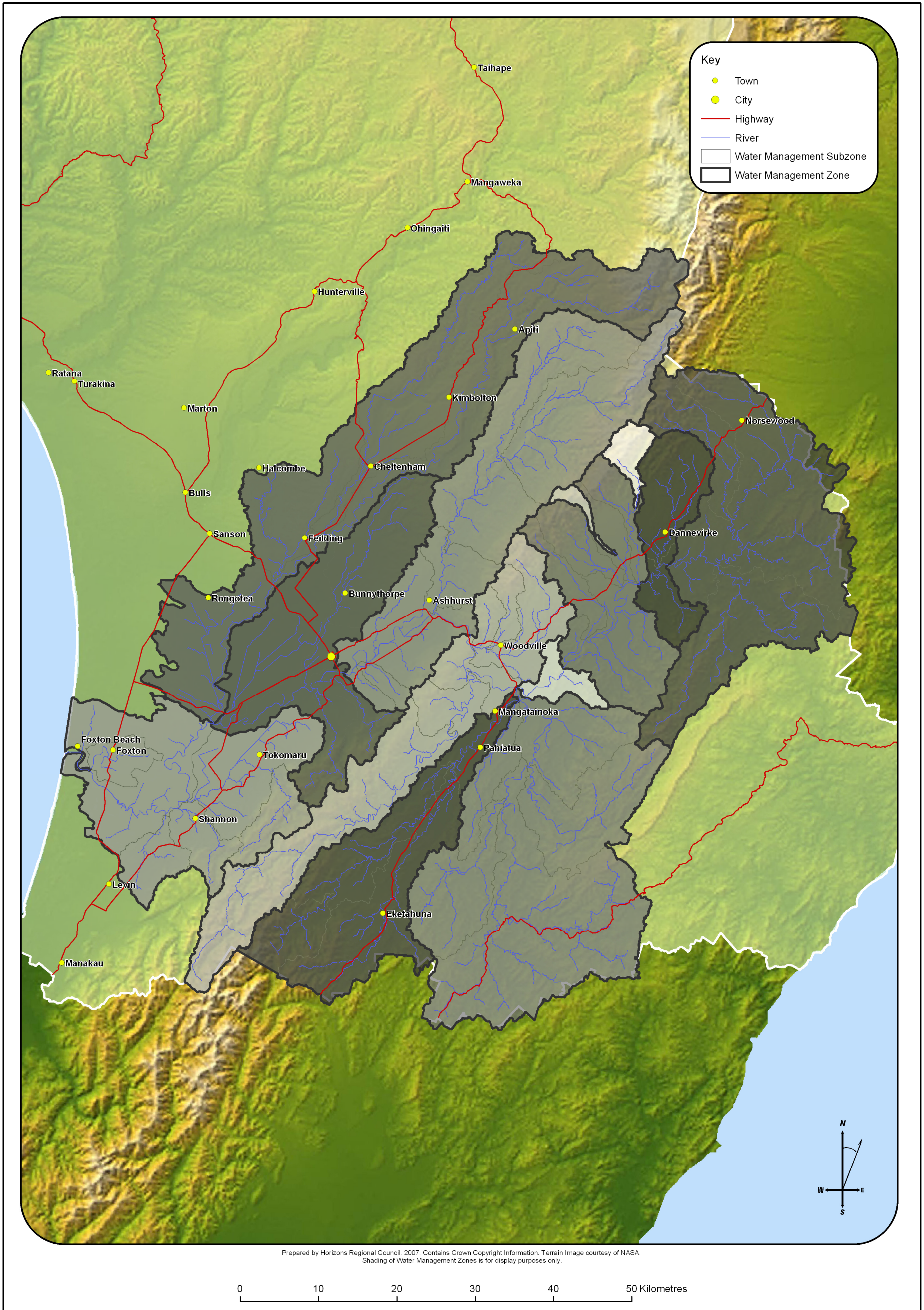
Table Ba1: Parent Catchments and Surface Water Management Zones* in the Manawatu Wanganui Region.

| Parent Catchment | Surface Water Management Zone* Code | Surface Water Management Zone* |
|-------------------------|--|---------------------------------------|
| Manawatu | Mana 1 | Upper Manawatu |
| | Mana 2 | Weber-Tamaki |
| | Mana 3 | Upper Tamaki |
| | Mana 4 | Upper Kumeti |
| | Mana 5 | Tamaki-Hopelands |
| | Mana 6 | Hopelands-Tiraumea |
| | Mana 7 | Tiarumea |
| | Mana 8 | Mangatainoka |
| | Mana 9 | Upper Gorge |
| | Mana 10 | Middle Manawatu |
| | Mana 11 | Lower Manawatu |
| | Mana 12 | Oroua |
| | Mana 13 | Coastal Manawatu |
| Rangitikei | Rang 1 | Upper Rangitikei |
| | Rang 2 | Middle Rangitikei |
| | Rang 3 | Lower Rangitikei |
| | Rang 4 | Coastal Rangitikei |
| Whanganui | Whai 1 | Upper Whanganui |
| | Whai 2 | Cherry Grove |
| | Whai 3 | Te Maire |
| | Whai 4 | Middle Whanganui |
| | Whai 5 | Pipiriki |
| | Whai 6 | Paetawa |
| | Whai 7 | Lower Whanganui |
| Whangaehu | Whau 1 | Upper Whangaehu |
| | Whau 2 | Middle Whangaehu |
| | Whau 3 | Lower Whangaehu |
| | Whau 4 | Coastal Whangaehu |
| Turakina | Tura 1 | Turakina |
| Ohau | Ohau 1 | Ohau |
| Owahanga | Owha 1 | Owahanga |
| East Coast | East 1 | East Coast |
| Akitio | Akit 1 | Akitio |
| West Coast | West 1 | Northern Coastal |
| | West 2 | Kai Iwi |
| | West 3 | Mowhanau |
| | West 4 | Kaitoke Lakes |
| | West 5 | Southern Whanganui Lakes |
| | West 6 | Northern Manawatu Lakes |
| | West 7 | Waitarere |
| | West 8 | Lake Papaitonga |
| | West 9 | Waikawa |
| Lake Horowhenua | Hoki 1 | Lake Horowhenua |



Map D:2 Manawatu Catchment Water Management Zones and Sub-zones

Ba1.2 Surface Water Management Sub-Zones Listed by Catchment



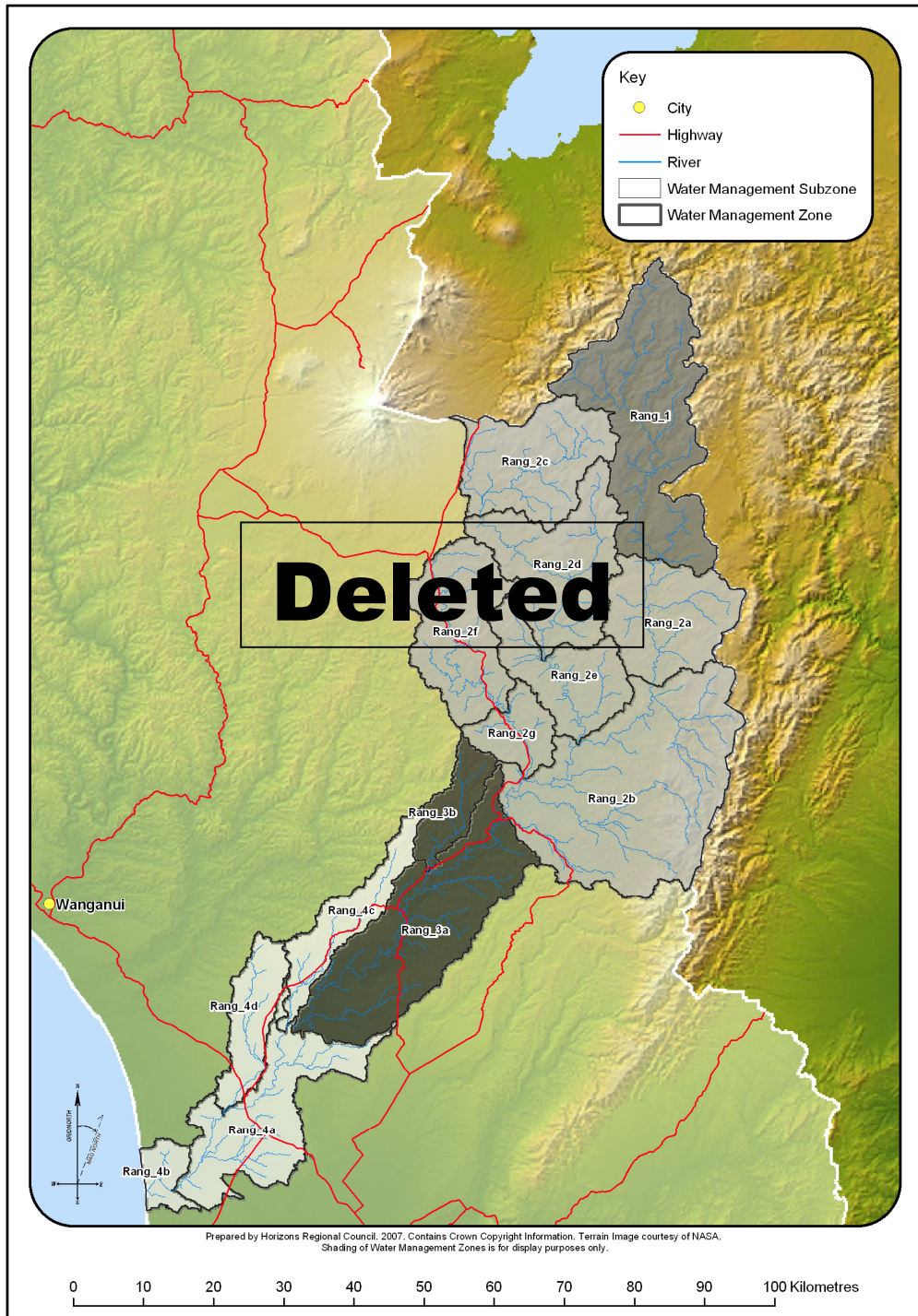
Map Ba 2: Manawatu Catchment - Surface Water Management Zones* and Sub-zones (refer to Table Ba2 for Water Management Sub-zone names).

| Table Ba2: Description of Manawatu Catchment Surface Water Management Zones* and Sub-zones ² | | |
|---|----------------------------------|--|
| Management Zone | Management Sub-zone | Sub-zone Description ³ |
| Upper Manawatu (Mana_1) | Upper Manawatu (Mana_1a) | Manawatu River – source to <u>from Weber Road at approx. NZMS 260 (U23:751-027) to source</u> |
| | Mangatewainui (Mana_1b) | Mangatewainui River – source to <u>from Manawatu confluence at approx. NZMS 260 (U23:829-086) to source.</u> |
| | Mangatoro (Mana_1c) | Mangatoro Stream – source to <u>from Manawatu confluence at approx. NZMS 260 (U23:810-027) to source</u> |
| Weber-Tamaki (Mana_2) | Weber-Tamaki (Mana_2a) | Manawatu River – Weber Road to <u>from Tamaki confluence at approx. NZMS 260 (U23:709-003) to Weber road</u> |
| | Mangatera (Mana_2b) | Mangatera Stream – source to <u>from Manawatu confluence at approx. NZMS 260 (U23:737-025) to source</u> |
| Upper Tamaki (Mana_3) | Upper Tamaki | Tamaki River – source to <u>from water supply weir at approx. NZMS 260 (U23:709-111) to source</u> |
| Upper Kumeti (Mana_4) | Upper Kumeti | Kumeti Stream - source to <u>from Te Rehunga flow recorder at approx. NZMS 260 (T23:663-052) to source</u> |
| Tamaki-Hopelands (Mana_5) | Tamaki-Hopelands (Mana_5a) | Manawatu River – Tamaki confluence to <u>from Hopelands at approx. NZMS 260 (T24: 616-899) to Tamaki confluence</u> |
| | Lower Tamaki (Mana_5b) | Tamaki River – Water supply weir to <u>from Manawatu confluence at approx. NZMS 260 (U23:709-002) to water supply weir</u> |
| | Lower Kumeti (Mana_5c) | Kumeti Stream – Te Rehunga to <u>from Manawatu confluence at approx. NZMS 260 (U23:701-006) to Te Rehunga flow recorder</u> |
| | Oruakeretaki (Mana_5d) | Oruakeretaki Stream – source to <u>from Manawatu confluence at approx. NZMS 260 (T23:690-000) to source</u> |
| | Raparapawai (Mana_5e) | Raparapawai Stream – source to <u>from Manawatu confluence at approx. NZMS 260 (T24:643-932) to source</u> |
| Hopelands-Tiraumea (Mana_6) | Hopelands-Tiraumea (Mana_6) | Manawatu River – Hopelands to <u>from Tiraumea confluence (Ngawapurua) at approx. NZMS 260 (T24:553-870) to Hopelands</u> |
| Tiraumea (Mana_7) | Upper Tiraumea (Mana_7a) | Tiraumea River – Ngaturi from Makuri confluence at approx. NZMS 260 (T24:578-780) to source |
| | Lower Tiraumea (Mana_7b) | Tiraumea River – Ngaturi confluence to <u>from Manawatu confluence at approx. NZMS 260 (T24:555-870) to Makuri confluence</u> |
| | Mangaone River (Mana_7c) | Mangaone River – source to <u>from Tiraumea confluence at approx. NZMS 260 (T24:541-730) to source</u> |
| | Makuri (Mana_7d) | Makuri River – source to <u>from Tiraumea confluence at approx. NZMS 260 (T24:568-771) to source</u> |
| | Mangaramarama (Mana_7e) | Mangaramarama Creek – source to Mangatainoka confluence (T24:557-844) from Tiraumea confluence at approx. NZMS 260 T24:559-854 to source |
| Mangatainoka (Mana_8) | Upper Mangatainoka (Mana_8a) | Mangatainoka River from Source to <u>Larsons Road at approx. NZMS 260 T25:308-595 to source</u> |
| | Middle Mangatainoka (Mana_8b) | Mangatainoka River from <u>Larsons Road to downstream Makakahi confluence at approx. NZMS 260 T24:475-775 to Larsons Road</u> |
| | Lower Mangatainoka (Mana_8c) | Mangatainoka River from <u>Makakahi confluence to Tiraumea confluence at approx. NZMS 260 T24:577-854 to Makakahi confluence</u> |
| | Makakahi (Mana_8d) | Makakahi River – source to <u>from Mangatainoka confluence at approx. NZMS 260 T24:475-775 to source</u> |
| | Mangaramarama (Mana_8e) | Mangaramarama Creek – source to Mangatainoka confluence (T24:557-844) |
| Upper Gorge (Mana_9) | Upper Gorge (Mana_9a) | Manawatu River – Tiraumea confluence to <u>from Upper Gorge flow recorder at approx (T24:494-933) to Tiraumea confluence</u> |
| | Mangapapa (Mana_9b) | Mangapapa Stream – source to <u>from Mangaatua confluence at approx NZMS 260 (T24:515-922) to source</u> |
| | Mangaatua (Mana_9c) | Mangaatua Stream – source to <u>from Manawatu confluence at approx. NZMS 260 (T24:496-925) to source</u> |
| | Upper Mangahao (Mana_9d) | Mangahao River – source to Balance <u>from Balance at approx. NZMS 260 (T24:468-818) to source</u> |
| | Lower Mangahao (Mana_9e) | Mangahao River – Balance to <u>from Manawatu confluence at approx. NZMS 260 (T24:496-891) to Balance</u> |
| Middle Manawatu (Mana_10) | Middle Manawatu (Mana_10a) | Manawatu River – Upper Gorge to <u>from Teacher's College at approx. NZMS 260 (T24:331-892) to Upper Gorge</u> |
| | Upper Pohangina (Mana_10b) | Pohangina River – source to <u>from Totara Reserve at approx. NZMS 260 (T23:534-167) to source</u> |
| | Middle Pohangina (Mana_10c) | Pohangina River – Totara Reserve to <u>from Mais Reach at approx. NZMS 260 (T23:467-053) to Totara Reserve</u> |
| | Lower Pohangina (Mana_10d) | Pohangina River – Mais Reach to <u>from Manawatu confluence at approx. NZMS 260 (T24:450-966) to Mais Reach</u> |
| | Aokautere (Mana_10e) | Aokautere Stream – source to <u>from Manawatu confluence at approx. NZMS 260 (T24:349-899) to source</u> |
| Lower Manawatu (Mana_11) | Lower Manawatu (Mana_11a) | Manawatu River – Teacher's College to <u>from Oroua confluence at approx. NZMS 260 (S24:167-826) to Teachers College</u> |
| | Turitea (Mana_11b) | Turitea Stream – source to <u>from Manawatu confluence at approx. NZMS 260 (T24:304-881) to source</u> |
| | Kahuterawa (Mana_11c) | Kahuterawa Stream – source to <u>Manawatu confluence at approx. NZMS 260 (S24:292-876) to source</u> |
| | Upper Mangaone Stream (Mana_11d) | Mangaone Stream – source to <u>from Milson Line at approx. NZMS 260 (T24:311-953) to source</u> |
| | Lower Mangaone Stream (Mana_11e) | Mangaone Stream – Milson Line to <u>from Manawatu confluence at approx. NZMS 260 (S24:283-872) to Milson Line</u> |
| | Main Drain (Mana_11f) | Main Drain catchment (including Taonui Stream) – from Manawatu confluence (including Taonui Stream) at approx. NZMS 260 (S24:181-836) to source |
| Oroua (Mana_12) | Upper Oroua (Mana_12a) | Oroua River – source to <u>from Almadale at approx. NZMS 260 (T23:365-113) to source</u> |
| | Middle Oroua (Mana_12b) | Oroua River – Almadale from <u>Awahuri Bridge at approx. NZMS 260 (S23:243-002) to Almadale</u> |
| | Lower Oroua (Mana_12c) | Oroua River – Awahuri Bridge to <u>from Manawatu confluence at approx NZMS 260 (S24:167-826) to Awahuri Bridge</u> |
| | Kiwitea (Mana_12d) | Kiwitea Stream – source to <u>from Oroua confluence at approx. NZMS 260 (T23:309-066) to source</u> |
| | Makino (Mana_12e) | Makino Stream – source to <u>from Oroua confluence at approx. NZMS 260 (S23:243-004) to source</u> |
| Coastal Manawatu (Mana_13) | Coastal Manawatu (Mana_13a) | Manawatu River – Oroua confluence to <u>from mouth⁴ at approx NZMS 260 (S24:977-788) to Oroua confluence (excluding the Manawatu River from the Cross-river CMA boundary at approx. NZMS 260 S24:009-766 to the mouth⁴)</u> |
| | Upper Tokomaru (Mana_13b) | Tokomaru River – source to <u>from Horseshoe Bend at approx. NZMS 260 (S24:241-768) to source</u> |

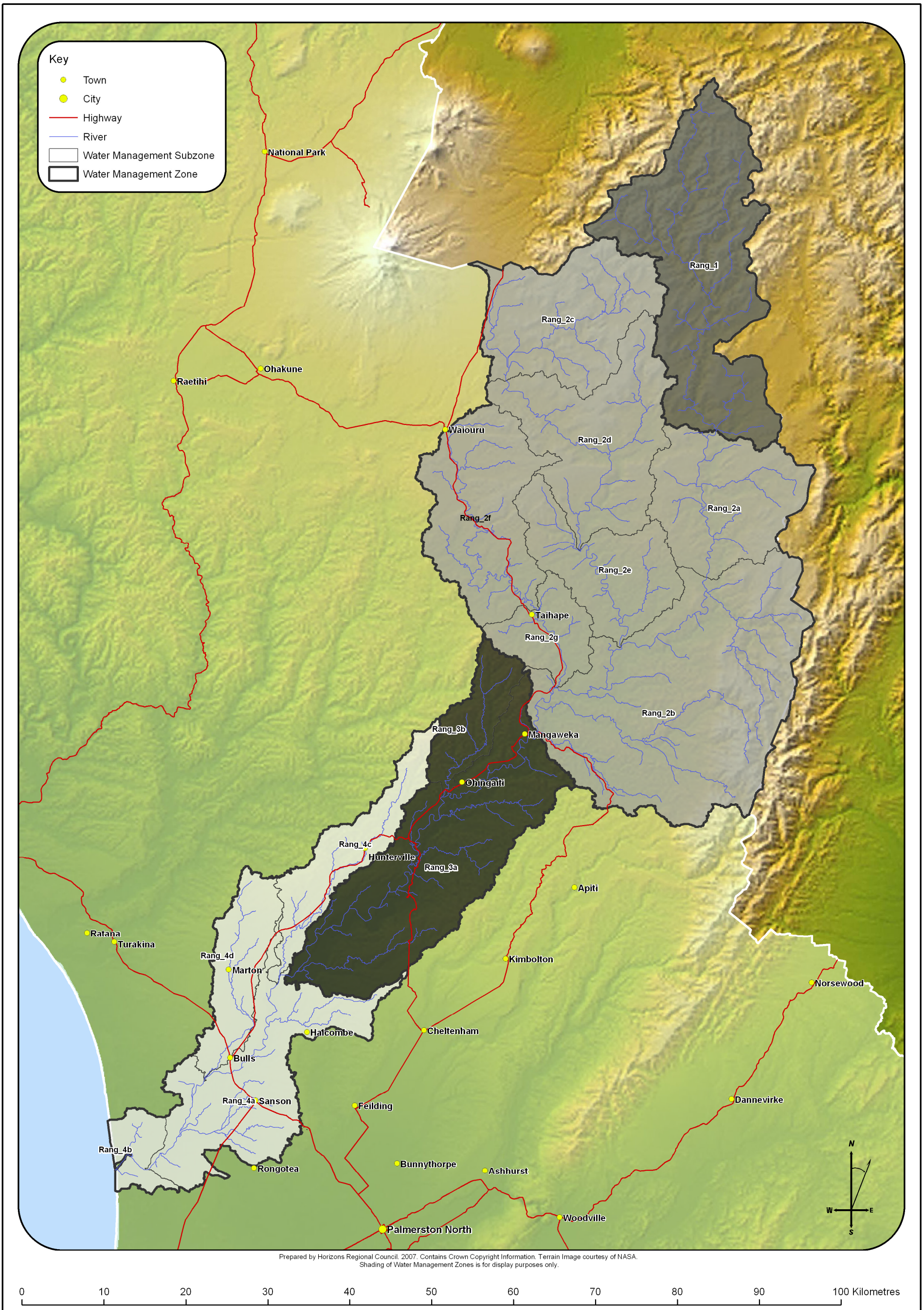
² Note to the hearing panel: This is a new table, but the information comes from the first three columns of Table D.2 in the Proposed One Plan

* Includes all inflowing tributaries and surrounding catchment area unless otherwise specified

| Table Ba2: Description of Manawatu Catchment Surface <i>Water Management Zones</i> ¹ and Sub-zones ² | | |
|--|------------------------------|---|
| Management Zone | Management Sub-zone | Sub-zone Description ³ |
| | Lower Tokomaru (Mana_13c) | Tokomaru River –Horseshoe Bend to from Manawatu confluence at approx. NZMS 260 (S24:134-727) to Horseshoe Bend |
| | Mangaore (Mana_13d) | Mangaore River –source to from Manawatu confluence at approx. NZMS 260 (S24:123-717) to source |
| | Koputaroa (Mana_13e) | Koputaroa Stream –source to from Manawatu confluence at approx. NZMS 260 (S24:106-708) to source |
| | Foxton Loop (Mana_13f) | Manawatu River at SH1 to from downstream limit of Whirikino Cut at approx. NZMS 260 (S24:010-769) to SH 1 |



Map D:3 Rangitikei Catchment Water Management Zones and Sub-zones



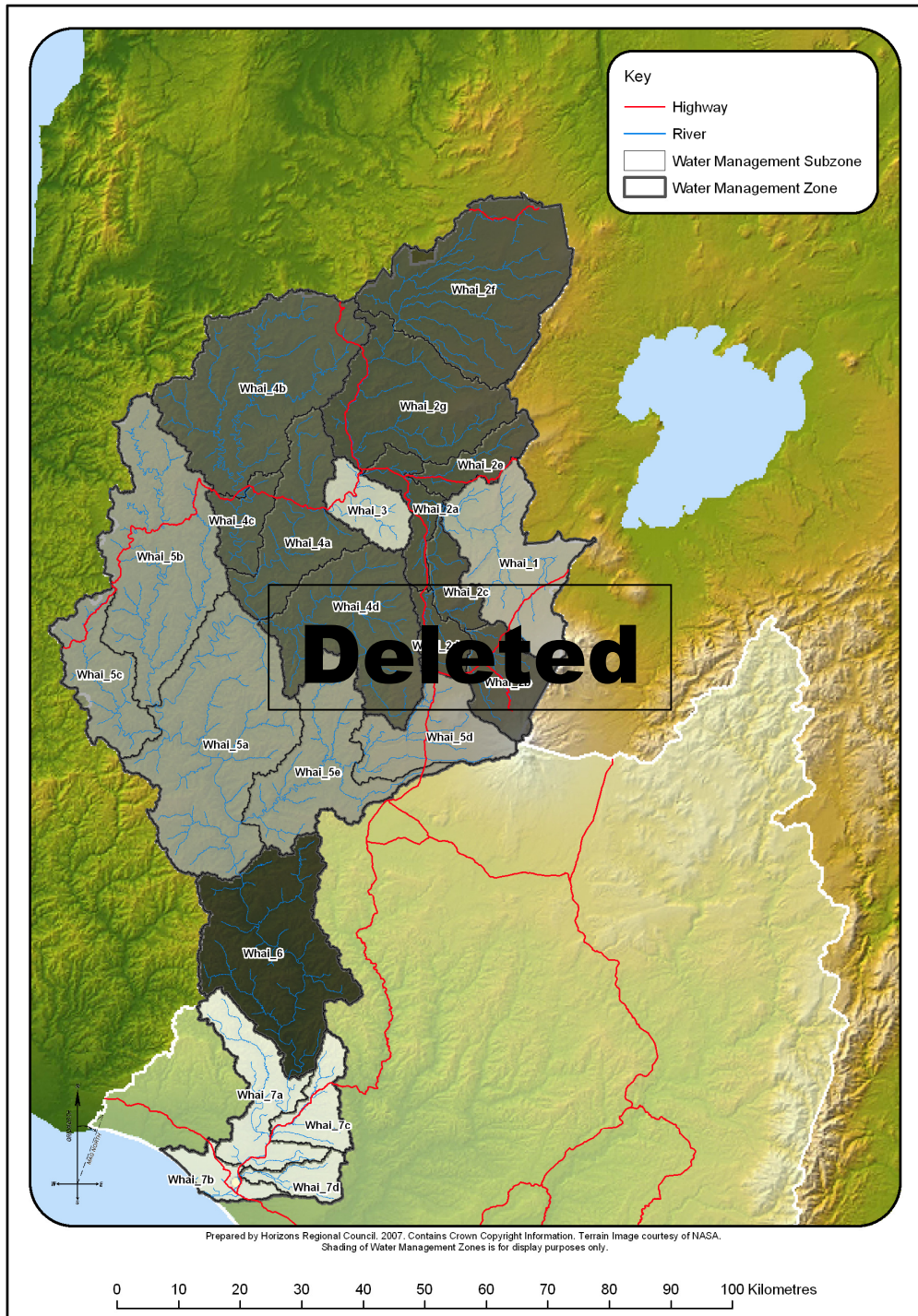
Map Ba 3: Rangitikei Catchment - Surface Water Management Zones* and Sub-zones (refer to Table Ba3 for Water Management Sub-zone names).

Table Ba3: Description of Rangitikei Catchment Surface Water Management Zones* and Sub-zones⁴

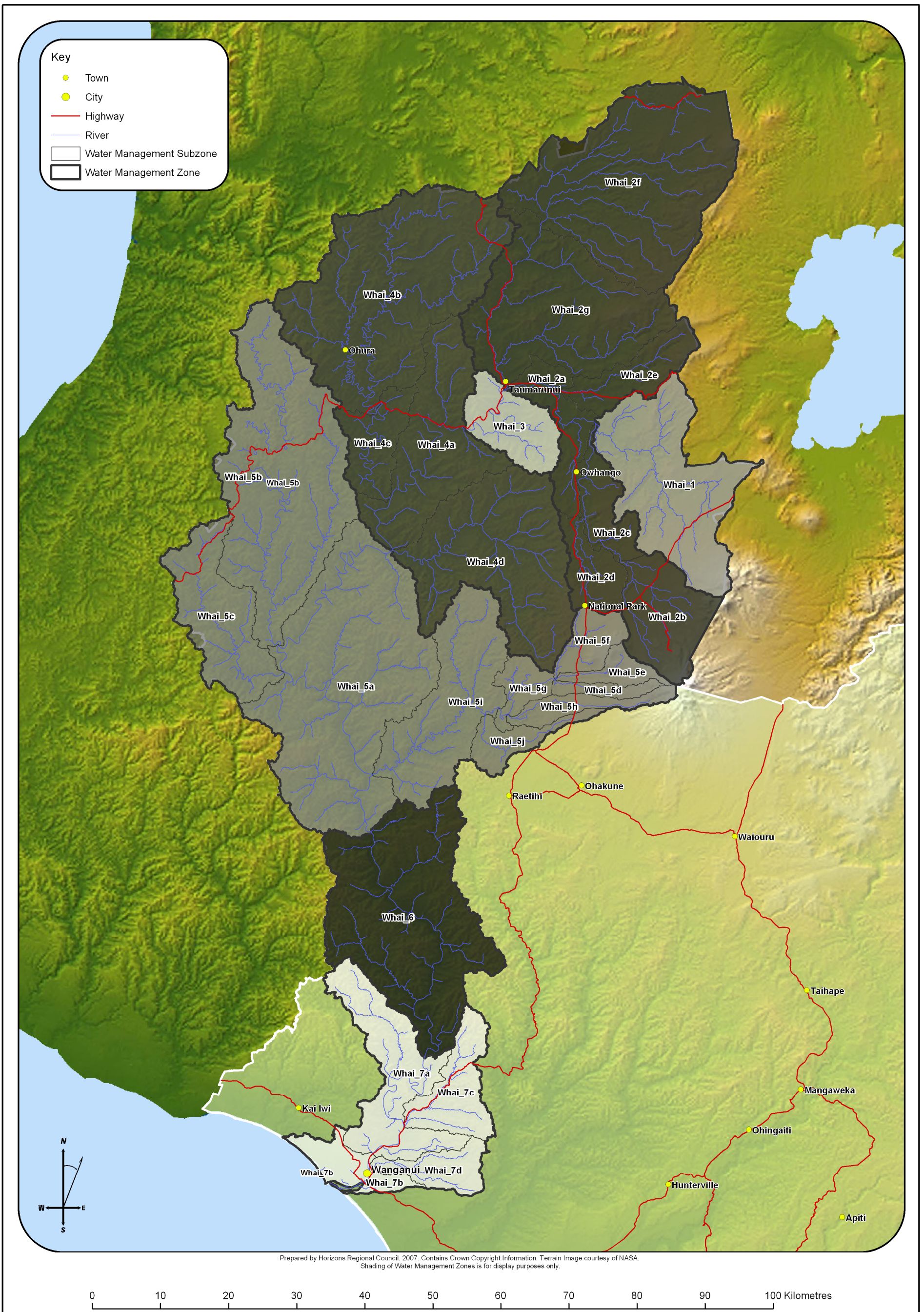
| Management Zone | Sub-zone | Sub-zone Description [†] |
|-----------------------------|---------------------------------|---|
| Upper Rangitikei (Rang_1) | Upper Rangitikei | Rangitikei River – source to <u>from Makahikatoa Stream at approx. NZMS 260 (U21:726-888)</u> |
| Middle Rangitikei (Rang_2) | Middle Rangitikei (Rang_2a) | Rangitikei River – Makahikatoa Stream to <u>from Pukeokahu at approx. NZMS 260 (U21:713-708) to Makahikatoa Stream</u> |
| | Pukeokahu – Mangaweka (Rang_2b) | Rangitikei River main stem – Pukeokahu to <u>from Mangaweka at approx. NZMS 260 (T22:504-513) to Pukeokahu</u> |
| | Upper Moawhango (Rang_2c) | Moawhango River – source to <u>from Moawhango Dam at approx. NZMS 260 (T20:469-960) to source</u> |
| | Middle Moawhango (Rang_2d) | Moawhango River – Dam to <u>from Moawhango Township at approx. NZMS 260 (T21:557-745) to Moawhango Dam</u> |
| | Lower Moawhango (Rang_2e) | Moawhango River – Moawhango Township to <u>from Rangitikei confluence at approx. NZMS 260 (T21:609-623) to Moawhango Township</u> |
| | Upper Hautapu (Rang_2f) | Hautapu River – source to <u>from Taihape at approx. NZMS 260 (T21:506-670) to source</u> |
| | Lower Hautapu (Rang_2g) | Hautapu River – Taihape to <u>from Rangitikei confluence at approx. NZMS 260 (T22:529-574) to Taihape</u> |
| Lower Rangitikei (Rang_3) | Lower Rangitikei (Rang_3a) | Rangitikei River – Mangaweka to <u>from Onepuhi at approx. NZMS 260 (S23: 201- 222) to Mangaweka</u> |
| | Makohine (Rang_3b) | Makohine Stream – source to <u>from Rangitikei confluence at approx. NZMS 260 (T22:400-443) to source</u> |
| Coastal Rangitikei (Rang_4) | Coastal Rangitikei (Rang_4a) | Rangitikei River – Onepuhi to <u>from McKelvies at approx. NZMS 260 (S24:033-985) to Onepuhi</u> |
| | Tidal Rangitikei (Rang_4b) | Rangitikei River – McKelvies to <u>from the mouth[^] at approx. NZMS 260 (S24:991-984) to McKelvies (excluding the Rangitikei River from the Cross-river CMA boundary at approx. NZMS 260 S23:009-001 to the mouth[^])</u> |
| | Porewa (Rang_4c) | Porewa Stream – source to <u>from Rangitikei confluence at approx. NZMS 260 (S23:190-212) to source</u> |
| | Tutaenui (Rang_4d) | Tutaenui Stream – source to <u>from Rangitikei confluence at approx. NZMS 260 (S23:101-095) to source</u> |

⁴ Note to the hearing panel: This is a new table, but the information comes from the first three columns of Table D.2 in the Proposed One Plan

[†] Includes all inflowing tributaries and surrounding catchment area unless otherwise specified.



Map D:4 Whanganui Catchment Water Management Zones and Sub-zones



Map Ba 4: Whanganui Catchment - Surface Water Management Zones* and Sub-zones (refer to Table Ba4 for Water Management Sub-zone names).

| Table Ba4: Description of Whanganui Catchment Surface Water Management Zones* and Sub-zones ⁵ | | |
|--|-----------------------------------|---|
| Management Zone | Sub-zone | Sub-zone Description* |
| Upper Whanganui (Whai_1) | Upper Whanganui | Whanganui River – source to from Whakapapa confluence at approx. NZMS 260 (S19: 189-499) to source |
| Cherry Grove (Whai_2) | Cherry Grove (Whai_2a) | Whanganui River – Whakapapa confluence to from Cherry Grove at approx. NZMS 260 (S18:057-545) to Whakapapa confluence |
| | Upper Whakapapa (Whai_2b) | Whakapapa River – source to from Footbridge at approx. NZMS 260 (S19: 226-293) to source |
| | Lower Whakapapa (Whai_2c) | Whakapapa River – Footbridge to from Whanganui confluence at approx. NZMS 260 (S19: 189-499) to Footbridge |
| | Piopiotea (Whai_2d) | Piopiotea Stream – source to from Whakapapa confluence at approx. NZMS 260 (S19:174-356) to source |
| | Pungapunga (Whai_2e) | Pungapunga River – source to from Whanganui confluence at approx. NZMS 260 (S18:124-546) to source |
| | Upper Ongarue (Whai_2f) | Ongarue River – source to from Waihuka Stream confluence at approx. NZMS 260 (S18:108-785) to source |
| | Lower Ongarue (Whai_2g) | Ongarue River – Waihuka Stream to from Whanganui confluence at approx. NZMS 260 (S18:056-547) to Waihuka Stream |
| Te Maire (Whai_3) | Te Maire | Whanganui River – Cherry Grove to from Te Maire at approx. NZMS 260 (S19: 998-490) to Cherry Grove |
| Middle Whanganui (Whai_4) | Middle Whanganui (Whai_4a) | Whanganui River – Te Maire to from Retaruke confluence (Wades Landing/Whakahoro) at approx. NZMS 260 (R19: 886-306) to Te Maire |
| | Upper Ohura (Whai_4b) | Ohura River – source to from Tokorima at approx. NZMS 260 (R18: 863-521) to source |
| | Lower Ohura (Whai_4c) | Ohura River – Tokorima to from Whanganui confluence at approx. NZMS 260 (R19:887-386) to Tokorima |
| | Retaruke (Whai_4d) | Retaruke River – source to from Whanganui confluence at approx. NZMS 260 (R19:890-309) to source |
| Pipiriki (Whai_5) | Pipiriki (Whai_5a) | Whanganui River – Retaruke confluence to from Pipiriki at approx. NZMS 260 (R21: 859-897) to Retaruke confluence |
| | Tangarakau (Whai_5b) | Tangarakau River – source to from Whanganui confluence at approx. NZMS 260 (R20:714-175) to source |
| | Whangamomona (Whai_5c) | Whangamomona River – source to from Whanganui confluence at approx. NZMS 260 (R20:731-130) to source |
| | Upper Manganui o te Ao (Whai_5d) | Manganui o te Ao River – source to Hoihenga Road (S20:047-077) from Makatote confluence at approx. NZMS 260 S20:129-120 to source |
| | Makatote (Whai_5e) | Makatote River from the confluence with the Manganui o Te Ao River at approx. NZMS 260 S20:129-120 to source |
| | Waimarino (Whai_5f) | Waimarino Stream from the confluence with the Makatote River at approx. NZMS 260 S20:129-120 to source |
| | Middle Manganui o te Ao (Whai_5g) | Manganui o te Ao River from Hoihenga Road at approx. NZMS 260 S20:047-077 to Makatote confluence |
| | Mangaturuturu (Whai_5h) | Mangaturuturu River from the confluence with the Manganui o te Ao River at approx. NZMS 260 S20:057-067 to source |
| | Lower Manganui o te Ao (Whai_5ei) | Manganui o te Ao River – Hoihenga Road to from Whanganui confluence at approx. NZMS 260 (R20:861-979) to Hoihenga Road |
| | Orautoha (Whai_5i) | Orautoha Stream from the confluence with the Manganui o te Ao River at approx. NZMS 260 S20:026-067 to source |
| Paetawa (Whai_6) | Paetawa | Whanganui River – Pipiriki to from Paetawa at approx. NZMS 260 (S22: 937-566) to Pipiriki |
| Lower Whanganui (Whai_7) | Lower Whanganui (Whai_7a) | Whanganui River – Paetawa to from Aramoho Bridge at approx. NZMS 260 (R22:858-420) to Paetawa |
| | Coastal Whanganui (Whai_7b) | Whanganui River – Aramoho Bridge to from <i>mouth</i> ⁶ at approx. NZMS 260 (R22:797-328) to Aramoho Bridge (excluding the Whanganui River from the Cross-river CMA boundary at approx. NZMS 260 R22:848-380 to the <i>mouth</i> ⁶) |
| | Upokongaro (Whai_7c) | Upokongaro River – source to from Whanganui confluence at approx. NZMS 260 (S22:908-463) to source |
| | Matarawa (Whai_7d) | Matarawa River – source to from Whanganui confluence at approx. NZMS 260 (R22:857-403) to source |

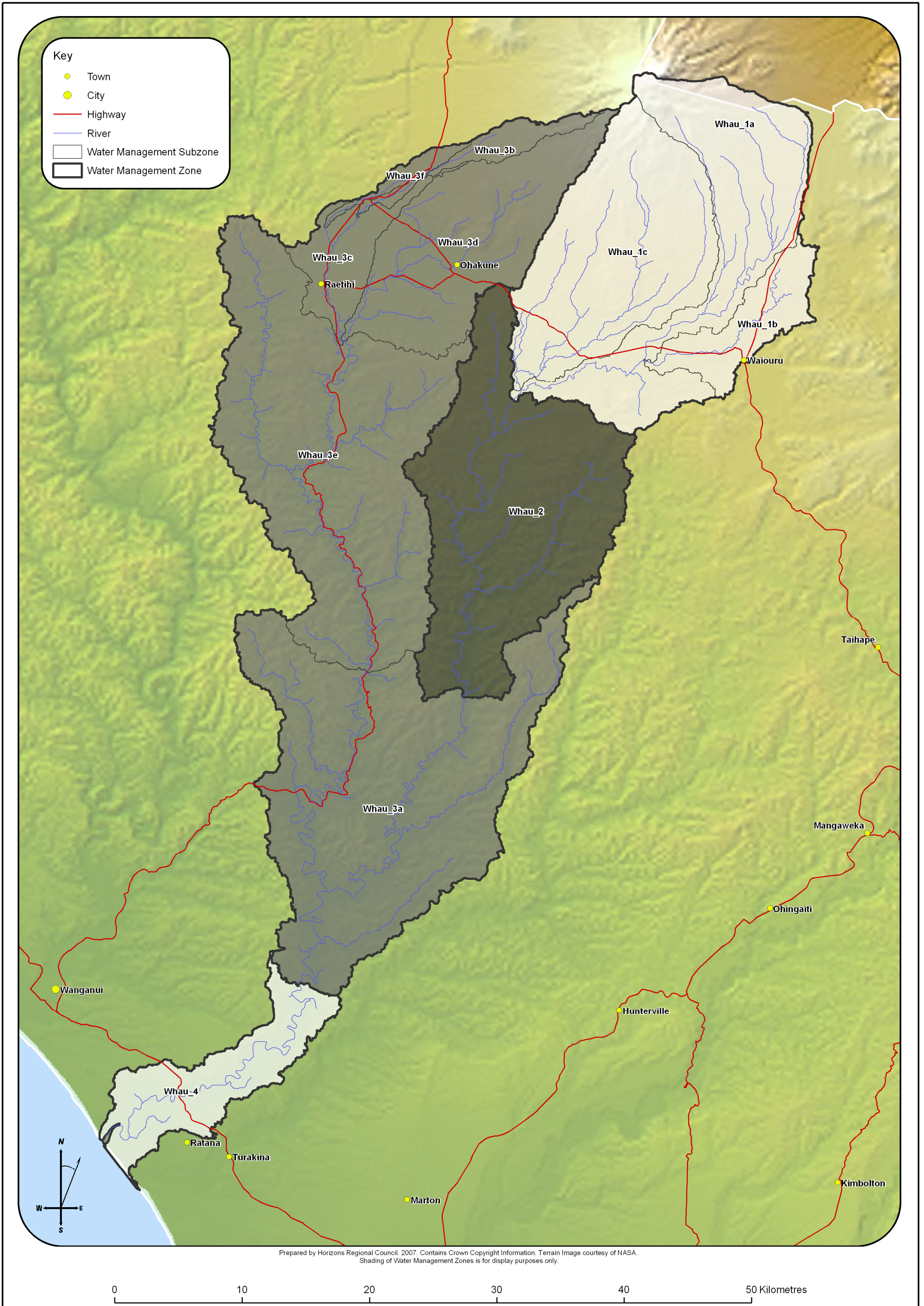
* Includes all inflowing tributaries and surrounding catchment area unless otherwise specified.

⁵ Note to the hearing panel: This is a new table, but the information comes from the first three columns of Table D.2 in the Proposed One Plan

⁶ Includes all inflowing tributaries and surrounding catchment area unless otherwise specified.



Map D:5 Whangaehu Catchment Water Management Zones and Sub-zones



Map Ba 5: Whangaehu Catchment - Surface *Water Management Zones** and Sub-zones (refer to Table Ba5 for Water Management Sub-zone names).

Table Ba5: Description of Whangaehu Catchment Surface Water Management Zones* and Sub-zones⁶

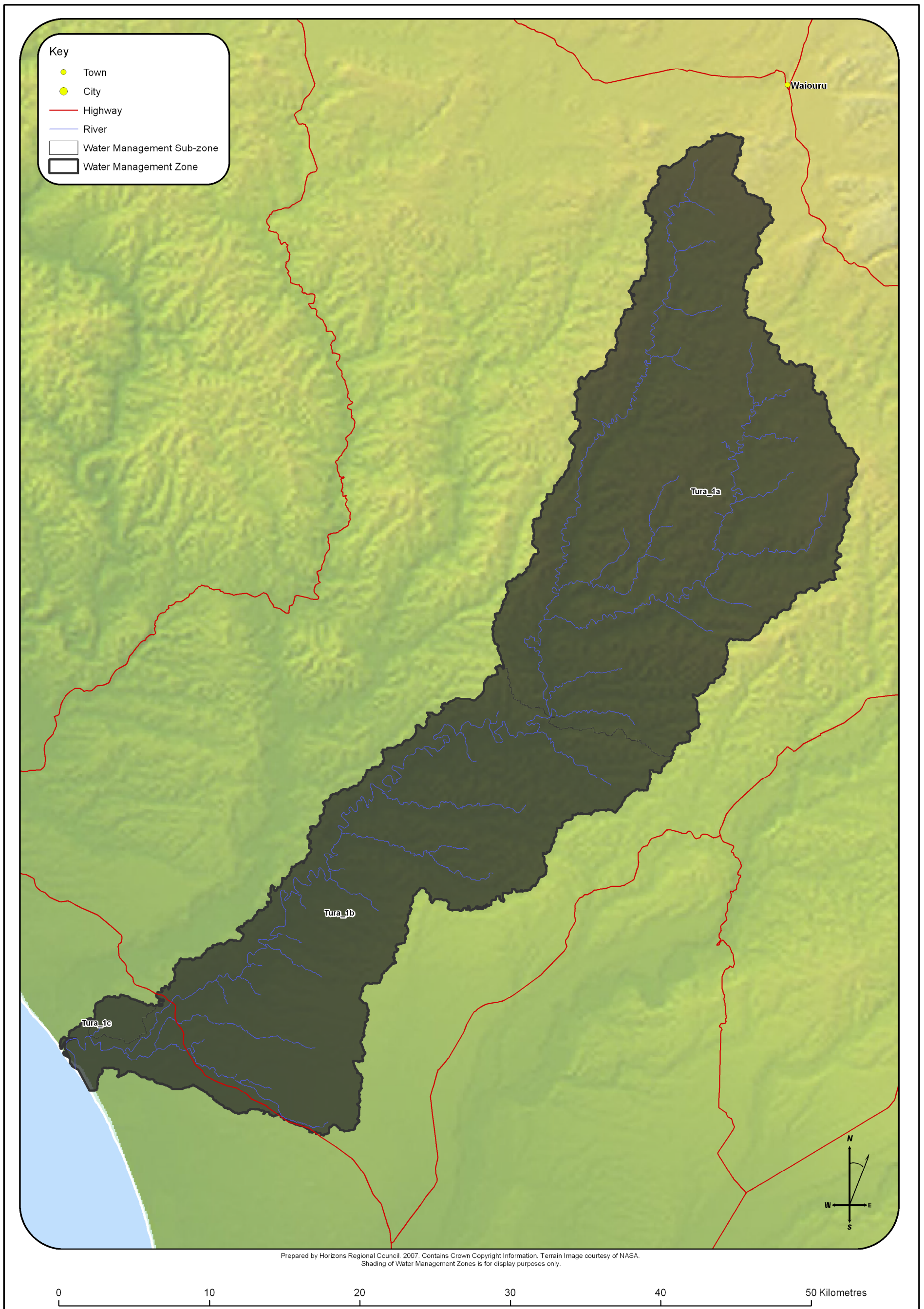
| Management Zone | Sub-zone | Sub-zone Description ⁷ |
|----------------------------|----------------------------|--|
| Upper Whangaehu (Whau_1) | Upper Whangaehu (Whau_1a) | Whangaehu River – source to from Karioi at approx. NZMS 260 (S21: 218-864) to source |
| | Waitangi (Whau_1b) | Waitangi Stream – source to from Whangaehu confluence at approx. NZMS 260 (T21:316-888) to source |
| | Tokiahuru (Whau_1c) | Tokiahuru Stream – source to from Whangaehu confluence at approx. NZMS 260 (S21:219-865) to source |
| Middle Whangaehu (Whau_2) | Middle Whangaehu | Whangaehu River – Karioi to from Aranui at approx. NZMS 260 (S21: 175-627 to Karioi |
| Lower Whangaehu (Whau_3) | Lower Whangaehu (Whau_3a) | Whangaehu River – Aranui to from Kauangaroa at approx. NZMS 260 (S22:045-397) to Aranui (including Mangawhero River from Raupiu Road to Whangaehu confluence to Raupiu Road) |
| | Upper Makotuku (Whau_3b) | Makotuku River – source to Water from water supply weir at approx. NZMS 260 (S20:103-011) to source |
| | Lower Makotuku (Whau_3c) | Makotuku River – Water supply weir to from Mangawhero confluence at approx. NZMS 260 (S20:080-903) to water supply weir |
| | Upper Mangawhero (Whau_3d) | Mangawhero River – source to from Makotuku confluence at approx. NZMS 260 (S20:080-903) to source |
| | Lower Mangawhero (Whau_3e) | Mangawhero River - Makotuku confluence to Raupiu Road at approx. NZMS 260 (S21:099-646) |
| | Makara (Whau_3f) | Makara Stream from the confluence with an unnamed tributary at approx. NZMS 260 S20:065-992 to source |
| Coastal Whangaehu (Whau_4) | Coastal Whangaehu | Whangaehu River – Kauangaroa to from <i>mouth</i> [^] at approx. NZMS 260 (R23:890-275) to Kuangaroa (excluding the Whangaehu River from the Cross-river CMA boundary at approx. NZMS 260 R23:903-287 to <i>mouth</i> [^]) |

⁶ Note to the hearing panel: This is a new table, but the information comes from the first three columns of Table D.2 in the Proposed One Plan

* Includes all inflowing tributaries and surrounding catchment area unless otherwise specified.



Map D:6 Turakina Catchment Water Management Zones and Sub-zones



Map Ba 6: Turakina Catchment - Surface *Water Management Zones** and Sub-zones (refer to Table Ba6 for Water Management Sub-zone names).

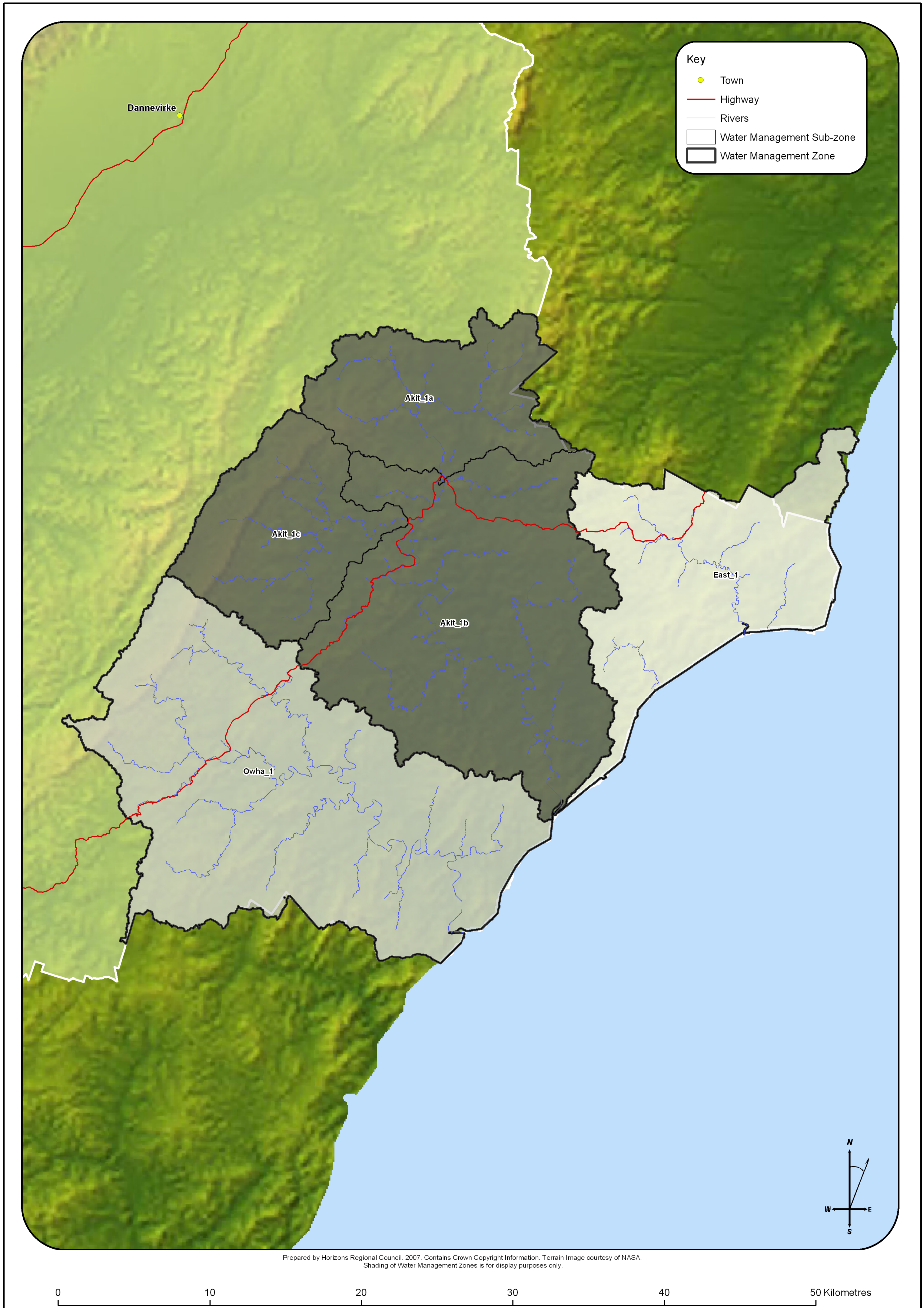
| Table Ba6: Description of Turakina Catchment Surface Water Management Zone* and Sub-zones⁷ | | |
|--|-----------------------------|--|
| Management Zone | Sub-zone | Sub-zone Description⁸ |
| Turakina (Tura_1) | Upper Turakina (Tura_1a) | Turakina River source to from Otairie at approx. NZMS 260 (S22:236-471) to source |
| | Lower Turakina (Tura_1b) | Turakina River Otaire to from mouth ⁸ at approx. NZMS 260 (S23:924-231) to Otairie (excluding the Turakina River from the Cross-river CMA boundary at approx. NZMS 260 S23:921-254 to the mouth ⁸) |
| | Ratana (Tura_1c) | Lakes Waipu and Oraekomiko and all surrounding catchment area |

⁷ Note to the hearing panel: This is a new table, but the information comes from the first three columns of Table D.2 in the Proposed One Plan

⁸ Includes all inflowing tributaries and surrounding catchment area unless otherwise specified.



Map D:7 East Coast Water Management Zones and Sub-zones



Map Ba 7: East Coast - Surface *Water Management Zones** and Sub-zones (refer to Table Ba7 for Water Management Sub-zone names).

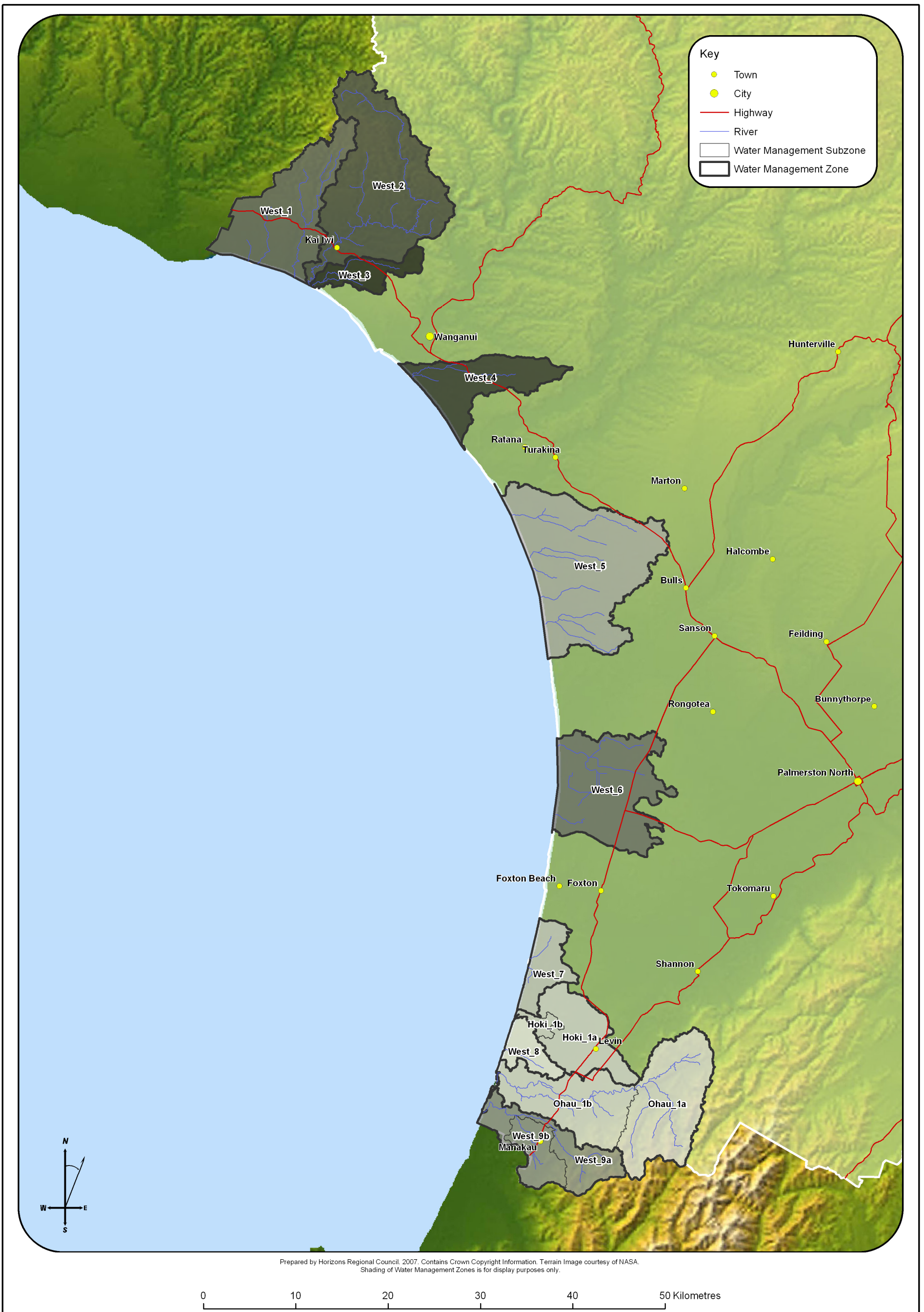
| Table Ba7: Description of East Coast Surface Water Management Zone* and Sub-zones⁸ | | |
|--|---------------------------|---|
| Management Zone | Sub-zone | Sub-zone Description⁷ |
| East Coast (East_1) | East Coast | Wainui, Tautane and Waimata – whole catchments from source to mouth [^] to source (excluding the Wainui River from the Cross-river CMA boundary at approx. NZMS 260 U24:115-735 to mouth [^]) |
| Akitio (Akit_1) | Upper Akitio (Akit_1a) | Akitio River – source to from Weber Road at approx. NZMS 260 {U24: 919-832} to source |
| | Lower Akitio (Akit_1b) | Akitio River –Weber Road to from mouth [^] at approx. NZMS 260 {U25:992-610} to Weber Road (excluding the Akitio River from the Cross-river CMA boundary at approx. NZMS 260 U25:915-554 to mouth [^]) |
| | Waihi (Akit_1c) | Waihi Stream – source to from Akitio confluence at approx. NZMS 260 {U24:895-801} to source |
| Owahanga (Owha_1) | Owahanga | Owahanga River – source to from mouth [^] at approx. NZMS 260 {U25:932-532} to source (excluding the Owahanga River from the Cross-river CMA boundary at approx. NZMS 260 U25:932-532 to the mouth [^]) |

⁸ Note to the hearing panel: This is a new table, but the information comes from the first three columns of Table D.2 in the Proposed One Plan

⁷ Includes all inflowing tributaries and surrounding catchment area unless otherwise specified.



Map D:8 West Coast Water Management Zones and Sub-zones



Map Ba 8: West Coast- Surface Water Management Zones* and Sub-zones (refer to Table Ba8 for Water Management Sub-zone names).

Table Ba8: Description of West Coast Surface Water Management Zone* and Sub-zones⁹

| Management Zone | Sub-zone | Sub-zone Description [†] |
|--------------------------------------|------------------------------|--|
| Northern Coastal (West_1) | Northern Coastal | All coastal catchments and dune lakes between Kai Iwi and Waitotara catchments |
| Kai Iwi (West_2) | Kai Iwi | Kai Iwi Stream – source to <u>from mouth[^] at approx. NZMS 260 (R23:723-449) to source (excluding the Kai Iwi Stream from the Cross-river CMA boundary at approx. NZMS 260 R22:722-450 to the mouth[^])</u> |
| Mowhanau (West_3) | Mowhanau | Mowhanau Stream – source to <u>from mouth[^] at approx. NZMS 260 (R22:725-447) to source (excluding the Mowhanau Stream from the Cross-river CMA boundary at approx. NZMS 260 R22:726-4448 to the mouth[^])</u> |
| Kaitoke Lakes (West_4) | Kaitoke Lakes | Lakes Kaitoke, Pauri, Wiritoa, Kohata and all surrounding catchment area |
| Southern Whanganui Lakes (West_5) | Southern Whanganui Lakes | Lakes Vipan, Heaton, Bernard, William, Herbert, Hickson, Alice, Koitiata, Dudding and all surrounding catchment area |
| Northern Manawatu Lakes (West_6) | Northern Manawatu Lakes | All lakes and lagoons between Coastal Rangitikei and Coastal Manawatu and all surrounding catchment area |
| Waitarere (West_7) | Waitarere | All lakes and lagoons between Coastal Manawatu and Lake Horowhenua catchment and all surrounding catchment area |
| Lake Papaitonga (West_8) | Lake Papaitonga | Lake Papaitonga catchment |
| Waikawa (West_9) | Waikawa (West_9a) | Waikawa Stream – source to <u>from mouth[^] at approx. NZMS 260 (S25:908-548) to source (excluding the Waikawa Stream from the Cross-river CMA boundary at approx. NZMS 260 S25:915-554 to the mouth[^])</u> |
| | Manukau (West_9b) | Manukau Stream from the confluence with the Waikawa Stream at approx. NZMS 260 S25:946-549 to source |
| Ohau (Ohau_1) | Upper Ohau (Ohau_1a) | Ohau River – source to <u>from Rongomatane at approx. NZMS 260 (S25:072-577) to source</u> |
| | Lower Ohau (Ohau_ba) | Ohau River – Rongomatane to <u>from mouth[^] at approx. NZMS 260 (S25:918-578) to Rongomatane (excluding the Ohau River from the Cross-river CMA boundary at approx. NZMS 260 S25:929-595 to the mouth[^])</u> |
| Lake Horowhenua (Hoki_1) | Lake Horowhenua (Hoki_1a) | Whole lake catchment above Hokio Stream outlet |
| | Hokio (Hoki_1b) | Hokio Stream downstream of Lake Horowhenua outlet (excluding the Hokio Stream from the Cross-river CMA boundary at approx. NZMS 260 S25:949-657 to the mouth [^]) |

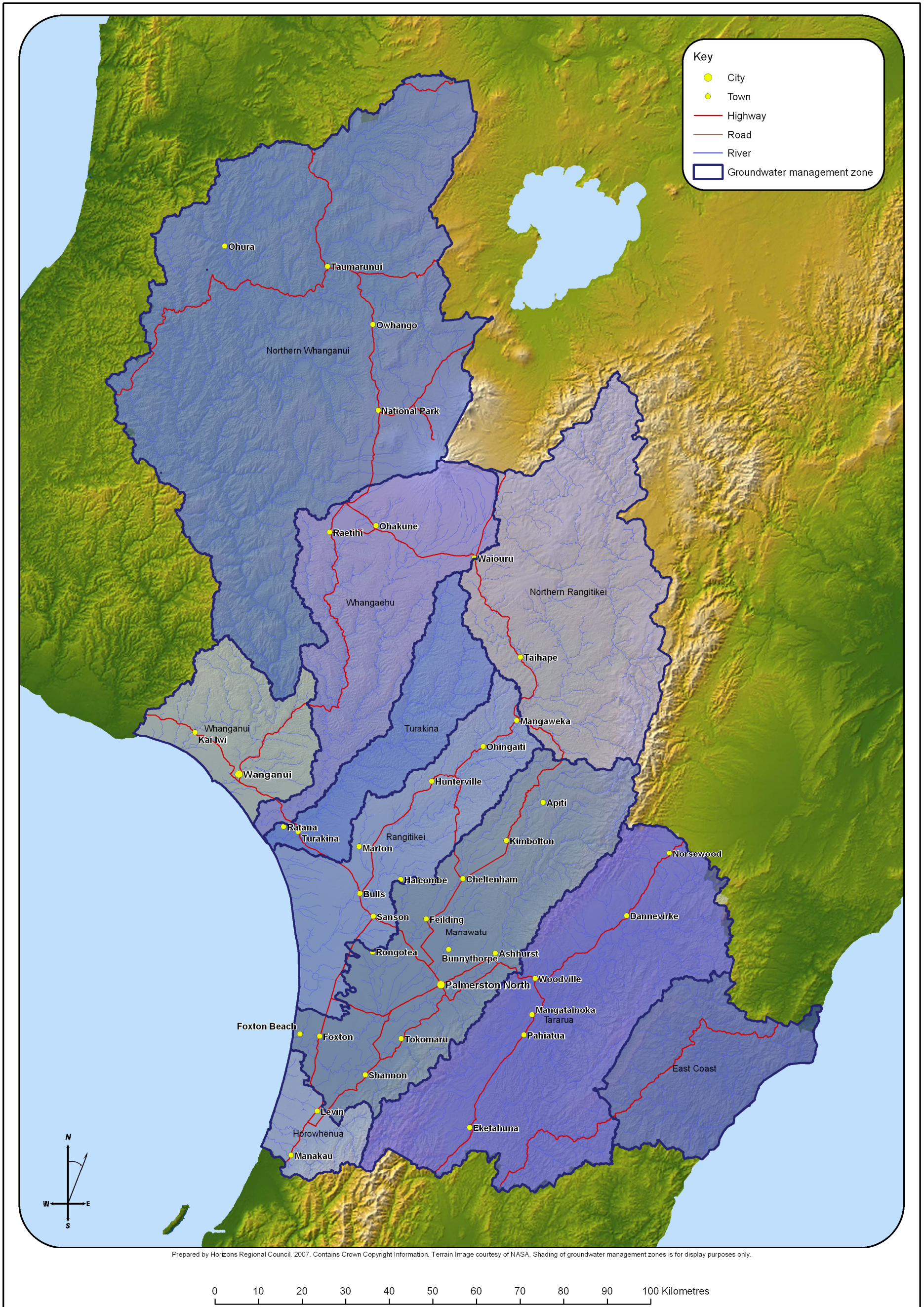
⁹ Note to the hearing panel: This is a new table, but the information comes from the first three columns of Table D.2 in the Proposed One Plan

[†] Includes all inflowing tributaries and surrounding catchment area unless otherwise specified.

Part Ba1.3: Groundwater Management Zone Finder



Figure C:1 Groundwater Management Zones



Map Ba 9: ZONE FINDER showing Groundwater Management Zones (GWMZ) in the Manawatu-Wanganui Region (refer to Table Ba9 for Ground Water Management Zone names).

| Table Ba9: Description of Groundwater Management Zones (GWMZ)¹⁰ | |
|---|---|
| Ground Water Management Zone | Surface Water Management Zones within GWMZ |
| 4-Whanganui | <u>Lower Whanganui (Whai_7)</u> |
| | <u>Northern Coastal (West_1)</u> |
| | <u>Kai Iwi (West_2)</u> |
| | <u>Mowhanau (West_3)</u> |
| | <u>Southern Wanganui Lakes (West_4)</u> |
| 2-Whangaehu | <u>Upper Whangaehu (Whau_1)</u> |
| | <u>Middle Whangaehu (Whau_2)</u> |
| | <u>Lower Whangaehu (Whau_3)</u> |
| | <u>Coastal Whangaehu (Whau_4)</u> |
| 3-Turakina | <u>Turakina (Tura_1)</u> |
| 4-Rangitikei | <u>Lower Rangitikei (Rang_3)</u> |
| | <u>Coastal Rangitikei (Rang_4)</u> |
| | <u>Kaitoke Lakes (West_5)</u> |
| | <u>Northern Manawatu Lakes (West_6)</u> |
| 5-Manawatu | <u>Middle Manawatu (Mana_10)</u> |
| | <u>Lower Manawatu (Mana_11)</u> |
| | <u>Oroua (Mana_12)</u> |
| | <u>Coastal Manawatu (Mana_13)</u> |
| 6-Horowhenua | <u>Lake Horowhenua (Hoki_1)</u> |
| | <u>Ohau (Ohau_1)</u> |
| | <u>Waitarere (West_7)</u> |
| | <u>Papaitonga (West_8)</u> |
| | <u>Waikawa (West_9)</u> |
| 7-Tararua | <u>Upper Manawatu (Mana_1)</u> |
| | <u>Weber – Tamaki (Mana_2)</u> |
| | <u>Upper Tamaki (Mana_3)</u> |
| | <u>Upper Kumeti (Mana_4)</u> |
| | <u>Tamaki – Hopelands (Mana_5)</u> |
| | <u>Hopelands (Mana_6)</u> |
| | <u>Tiraumea (Mana_7)</u> |
| | <u>Mangatainoka (Mana_8)</u> |
| | <u>Upper Gorge (Mana_9)</u> |
| East Coast | <u>Akitio (Akit_1)</u> |
| | <u>Owahanga (Owha_1)</u> |
| | <u>East Coast (East_1)</u> |
| Northern Rangitikei | <u>Upper Rangitikei (Rang_1)</u> |
| | <u>Middle Rangitikei (Rang_2)</u> |
| Northern Whanganui | <u>Upper Whanganui (Whai_1)</u> |
| | <u>Cherry Grove (Whai_2)</u> |
| | <u>Te Maire (Whai_3)</u> |
| | <u>Middle Whanganui (Whai_4)</u> |
| | <u>Pipiriki (Whai_5)</u> |
| | <u>Paetawa (Whai_6)</u> |

¹⁰ Note to the Hearing Panel: this is a new table but takes the information from the first two columns of the Table in Schedule C