

Notes for track changes: This is the final recommendation for wording of One Plan provisions made by Regional Council officers at the conclusion of the Water Hearing. It uses the Proposed One Plan provisions as notified as the base document and consolidates recommendations from the Planning Evidence and Recommendations Report (August 2009), Supplementary Report (November 2009) and End of Hearing Report (April 2010).

Words recommended to be added are shown in underline, words recommended to be removed are shown in ~~strike through~~.

Terms defined within the Proposed One Plan glossary are *italicised* and marked with an asterisk (*) symbol. Terms defined in the Resource Management Act 1991 are *italicised* and marked with a caret (^) symbol.

A detailed analysis of scope for recommendations to amend this schedule is presented in a separate report entitled “*Report on Scope for Water Chapter Recommendations*” (Barry Gilliland, 9 April 2010).

Schedule Ba: *Water Management Zones and Associated Values – Surface *Water^* and Groundwater**

For the purpose of clarity this is a Schedule to Part I – the Regional Policy Statement.

3 SCHEDULE Ba TABLE OF CONTENTS:

<u>Page Numbers</u>	<u>Section</u>
<u>Ba-1 – Ba-41</u>	<u>PART Ba1: <i>Water Management Zones*</i></u>
<u>Ba-2 – Ba-6</u>	<u>Ba1.1 Surface <i>Water Management Zone*</i> catchment finder</u>
<u>Ba-7 – Ba-37</u>	<u>Ba1.2 Surface <i>Water Management Sub-Zones (WMSZ)*</i> listed by catchment</u>
<u>Ba-38 – Ba-41</u>	<u>Ba1.3 <i>Groundwater Management Zone (GWMZ)*</i> finder</u>
<u>Ba-42 – Ba-163</u>	<u>PART Ba2: Surface <i>Water^</i> Management Values</u>
<u>Ba-42 – Ba-55</u>	<u>Ba2.1 Surface <i>Water^</i> Management Values listed by Sub-zone</u>
<u>Ba-56 – Ba-161.</u>	<u>Ba2.2 How and where specific <i>Water^</i> Management Values apply</u>
<u>Ba-162 – Ba-163</u>	<u>VALUES KEY¹</u>
<u>Ba-162</u>	<u>Pictorial Key for SOS-A and IS Values</u>
<u>Ba-163</u>	<u>Fold-out <i>Water^</i> Management Values Key</u>

¹ Note to the Hearing Panel: This key is conceptualised but has not been fully designed to work as it would in the plan as yet

Management Zones and Sub-zones



Map D:1 Water Management Zones in the Manawatu-Wanganui Region

PART Ba1.1: Surface Water Management Zone* Catchment Finder



Map Ba 1: Catchment Finder - showing parent catchments for each of the Surface Water Management Zones* in the Region (refer to table Ba1 for Water Management Zone names).

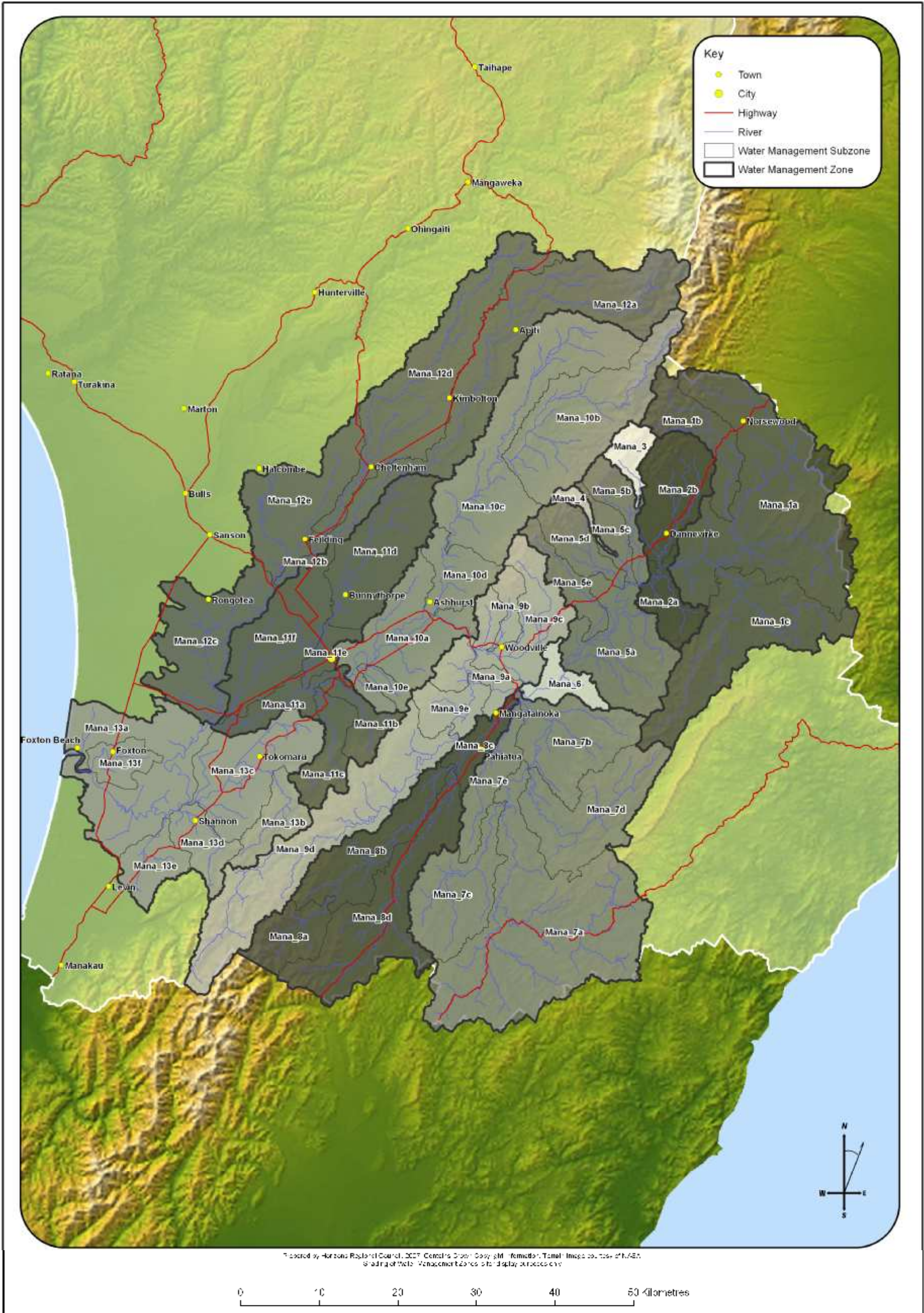
<u>Table Ba1: Parent Catchments and Surface Water Management Zones* in the Manawatu Wanganui Region.</u>		
<u>Parent Catchment</u>	<u>Surface Water Management Zone* Code</u>	<u>Surface Water Management Zone*</u>
<u>Manawatu</u>	<u>Mana 1</u>	<u>Upper Manawatu</u>
	<u>Mana 2</u>	<u>Weber-Tamaki</u>
	<u>Mana 3</u>	<u>Upper Tamaki</u>
	<u>Mana 4</u>	<u>Upper Kumeti</u>
	<u>Mana 5</u>	<u>Tamaki-Hopelands</u>
	<u>Mana 6</u>	<u>Hopelands-Tiraumea</u>
	<u>Mana 7</u>	<u>Tiraumea</u>
	<u>Mana 8</u>	<u>Mangatainoka</u>
	<u>Mana 9</u>	<u>Upper Gorge</u>
	<u>Mana 10</u>	<u>Middle Manawatu</u>
	<u>Mana 11</u>	<u>Lower Manawatu</u>
	<u>Mana 12</u>	<u>Oroua</u>
	<u>Mana 13</u>	<u>Coastal Manawatu</u>
<u>Rangitikei</u>	<u>Rang 1</u>	<u>Upper Rangitikei</u>
	<u>Rang 2</u>	<u>Middle Rangitikei</u>
	<u>Rang 3</u>	<u>Lower Rangitikei</u>
	<u>Rang 4</u>	<u>Coastal Rangitikei</u>
<u>Whanganui</u>	<u>Whai 1</u>	<u>Upper Whanganui</u>
	<u>Whai 2</u>	<u>Cherry Grove</u>
	<u>Whai 3</u>	<u>Te Maire</u>
	<u>Whai 4</u>	<u>Middle Whanganui</u>
	<u>Whai 5</u>	<u>Pipiriki</u>
	<u>Whai 6</u>	<u>Paetawa</u>
	<u>Whai 7</u>	<u>Lower Whanganui</u>
<u>Whangaehu</u>	<u>Whau 1</u>	<u>Upper Whangaehu</u>
	<u>Whau 2</u>	<u>Middle Whangaehu</u>
	<u>Whau 3</u>	<u>Lower Whangaehu</u>
	<u>Whau 4</u>	<u>Coastal Whangaehu</u>
<u>Turakina</u>	<u>Tura 1</u>	<u>Turakina</u>
<u>Ohau</u>	<u>Ohau 1</u>	<u>Ohau</u>
<u>Owahanga</u>	<u>Owha 1</u>	<u>Owahanga</u>
<u>East Coast</u>	<u>East 1</u>	<u>East Coast</u>
<u>Akitio</u>	<u>Akit 1</u>	<u>Akitio</u>

<u>Table Ba1: Parent Catchments and Surface <i>Water Management Zones</i>* in the Manawatu Wanganui Region.</u>		
<u>Parent Catchment</u>	<u>Surface <i>Water Management Zone</i>* Code</u>	<u>Surface <i>Water Management Zone</i>*</u>
West Coast	<u>West 1</u>	<u>Northern Coastal</u>
	<u>West 2</u>	<u>Kai Iwi</u>
	<u>West 3</u>	<u>Mowhanau</u>
	<u>West 4</u>	<u>Kaitoke Lakes</u>
	<u>West 5</u>	<u>Southern Whanganui Lakes</u>
	<u>West 6</u>	<u>Northern Manawatu Lakes</u>
	<u>West 7</u>	<u>Waitarere</u>
	<u>West 8</u>	<u>Lake Papaitonga</u>
	<u>West 9</u>	<u>Waikawa</u>
<u>Lake Horowhenua</u>	<u>Hoki 1</u>	<u>Lake Horowhenua</u>



Map D:2 Manawatu Catchment Water Management Zones and Sub-zones

PART Ba1.2 Surface Water Management Sub-Zones* Listed by Catchment



Map Ba 2: Manawatu Catchment - Surface Water Management Zones* and Sub-zones (refer to Table Ba2 for Water Management Sub-zone * names).

Table Ba2: Description of Manawatu Catchment Surface Water Management Zones* and Sub-zones²

Management Zone	Management Sub-zone	Sub-zone Description ³
Upper Manawatu (Mana_1)	Upper Manawatu (Mana_1a)	Manawatu River source to from Weber Road at approx. NZMS 260 (U23:751-027) to source
	Mangatewainui (Mana_1b)	Mangatewainui River source to from Manawatu confluence at approx. NZMS 260 (U23:829-086) to source.
	Mangatoro (Mana_1c)	Mangatoro Stream source to from Manawatu confluence at approx. NZMS 260 (U23:810-027) to source
Weber-Tamaki (Mana_2)	Weber-Tamaki (Mana_2a)	Manawatu River Weber Road to from Tamaki confluence at approx. NZMS 260 (U23:709-003) to Weber Road at approx. NZMS 260 U23:751-027
	Mangatera (Mana_2b)	Mangatera Stream source to from Manawatu confluence at approx. NZMS 260 (U23:737-025) to source
Upper Tamaki (Mana_3)	Upper Tamaki	Tamaki River source to from water supply weir at approx. NZMS 260 (U23:709-111) to source
Upper Kumeti (Mana_4)	Upper Kumeti	Kumeti Stream - source to from Te Rehunga flow recorder at approx. NZMS 260 (T23:663-052) to source
Tamaki-Hopelands (Mana_5)	Tamaki-Hopelands (Mana_5a)	Manawatu River Tamaki confluence to from Hopelands at approx. NZMS 260 (T24: 616-899) to Tamaki confluence at approx. NZMS 260 U23:709-003
	Lower Tamaki (Mana_5b)	Tamaki River Water supply weir to from Manawatu confluence at approx. NZMS 260 (U23:709-002) to water supply weir at approx. NZMS 260 U23:709-111
	Lower Kumeti (Mana_5c)	Kumeti Stream Te Rehunga to from Manawatu confluence at approx. NZMS 260 (U23:701-006) to Te Rehunga flow recorder at approx. NZMS 260 T23:663-052
	Oruakeretaki (Mana_5d)	Oruakeretaki Stream source to from Manawatu confluence at approx. NZMS 260 (T23:690-000) to source
	Raparapawai (Mana_5e)	Raparapawai Stream source to from Manawatu confluence at approx. NZMS 260 (T24:643-932) to source
Hopelands-Tiraumea (Mana_6)	Hopelands-Tiraumea (Mana_6)	Manawatu River Hopelands to from Tiraumea confluence (Ngawapurua) at approx. NZMS 260 (T24:553-870) to Hopelands at approx. NZMS 260 T24: 616-899
Tiraumea (Mana_7)	Upper Tiraumea (Mana_7a)	Tiraumea River Ngaturi from Makuri confluence at approx. NZMS 260 (T24:578-780) to source
	Lower Tiraumea (Mana_7b)	Tiraumea River Ngaturi confluence to from Manawatu confluence at approx. NZMS 260 (T24:555-870) to Makuri confluence at approx. NZMS 260 T24:578-780
	Mangaone River (Mana_7c)	Mangaone River source to from Tiraumea confluence at approx. NZMS 260 (T24:541-730) to source
	Makuri (Mana_7d)	Makuri River source to from Tiraumea confluence at approx. NZMS 260 (T24:568-771) to source
	Mangaramarama (Mana_8e) (Mana_7e)	Mangaramarama Creek - from Tiraumea confluence at approx. NZMS 260 T24:559-854 to source

² Note to the hearing panel: This is a new table, but the information comes from the first three columns of Table D.2 in the Proposed One Plan

* Includes all inflowing tributaries and surrounding catchment area unless otherwise specified

Table Ba2: Description of Manawatu Catchment Surface Water Management Zones* and Sub-zones²

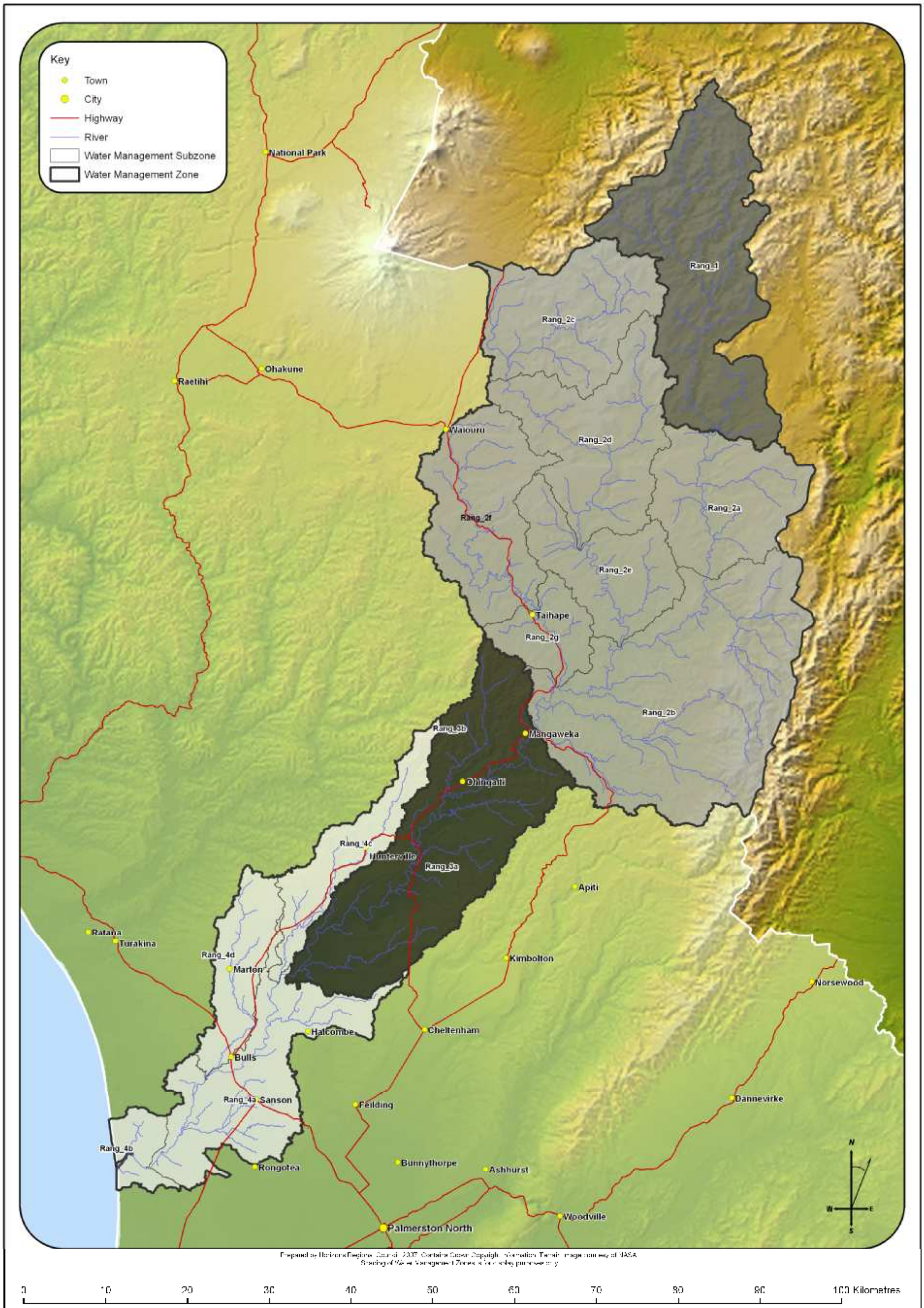
Management Zone	Management Sub-zone	Sub-zone Description ³
Mangatainoka (Mana_8)	Upper Mangatainoka (Mana_8a)	Mangatainoka River from Source to Larsons Road at approx. NZMS 260 T25:308-595 to source
	Middle Mangatainoka (Mana_8b)	Mangatainoka River from Larsons Road to downstream Makakahi confluence at approx. NZMS 260 T24:475-775 to Larsons Road at approx. NZMS 260 T25:308-595
	Lower Mangatainoka (Mana_8c)	Mangatainoka River from Makakahi confluence to Tiraumea confluence at approx. NZMS 260 T24:577-854 to Makakahi confluence at approx. NZMS 260 T24:475-775
	Makakahi (Mana_8d)	Makakahi River source to from Mangatainoka confluence at approx. NZMS 260 T24:475-775 to source
	Mangaramarama (Mana_8e)	Mangaramarama Creek source to Mangatainoka confluence (T24:557-844)
Upper Gorge (Mana_9)	Upper Gorge (Mana_9a)	Manawatu River Tiraumea confluence to from Upper Gorge flow recorder at approx. NZMS 260 (T24:494-933) to Tiraumea confluence at approx. NZMS 260 T24:553-870
	Mangapapa (Mana_9b)	Mangapapa Stream source to from Mangaatua confluence at approx. NZMS 260 (T24:515-922) to source
	Mangaatua (Mana_9c)	Mangaatua Stream source to from Manawatu confluence at approx. NZMS 260 (T24:496-925) to source
	Upper Mangahao (Mana_9d)	Mangahao River source to Balance from Ballance at approx. NZMS 260 (T24:468-818) to source
	Lower Mangahao (Mana_9e)	Mangahao River Balance to from Manawatu confluence at approx. NZMS 260 (T24:496-891) to Balance at approx. NZMS 260 T24:468-818
Middle Manawatu (Mana_10)	Middle Manawatu (Mana_10a)	Manawatu River Upper Gorge to from Teacher's College at approx. NZMS 260 (T24:331-892) to Upper Gorge NZMS 260 T24:494-933
	Upper Pohangina (Mana_10b)	Pohangina River source to from Totara Reserve at approx. NZMS 260 (T23:534-167) to source
	Middle Pohangina (Mana_10c)	Pohangina River Totara Reserve to from Mais Reach at approx. NZMS 260 (T23:467-053) to Totara Reserve at approx. NZMS 260 T23:534-167
	Lower Pohangina (Mana_10d)	Pohangina River Mais Reach to from Manawatu confluence at approx. NZMS 260 (T24:450-966) to Mais Reach at approx. NZMS 260 T23:467-053
	Aokautere (Mana_10e)	Aokautere Stream source to from Manawatu confluence at approx. NZMS 260 (T24:349-899) to source
Lower Manawatu (Mana_11)	Lower Manawatu (Mana_11a)	Manawatu River Teacher's College to from Oroua confluence at approx. NZMS 260 (S24:167-826) to Teachers College at approx. NZMS 260 T24:331-892
	Turitea (Mana_11b)	Turitea Stream source to from Manawatu confluence at approx. NZMS 260 (T24:304-881) to source
	Kahuterawa (Mana_11c)	Kahuterawa Stream source to Manawatu confluence at approx. NZMS 260 (S24:292-876) to source
	Upper Mangaone Stream (Mana_11d)	Mangaone Stream source to from Milson Line at approx. NZMS 260 (T24:311-953) to source
	Lower Mangaone Stream (Mana_11e)	Mangaone Stream Milson Line to from Manawatu confluence at approx. NZMS 260 (S24:283-872) to Milson Line at approx. NZMS 260 T24:311-953

Table Ba2: Description of Manawatu Catchment Surface Water Management Zones* and Sub-zones²

Management Zone	Management Sub_zone	Sub-zone Description ³
	Main Drain (Mana_11f)	Main Drain catchment (including Taonui Stream) to from Manawatu confluence (including Taonui Stream) at approx. NZMS 260 (S24:181-836) to source
Oroua (Mana_12)	Upper Oroua (Mana_12a)	Oroua River source to from Almadale at approx. NZMS 260 (T23:365-113) to source
	Middle Oroua (Mana_12b)	Oroua River Almadale from Awahuri Bridge at approx. NZMS 260 (S23:243-002) to Almadale at approx. NZMS 260 T23:365-113
	Lower Oroua (Mana_12c)	Oroua River Awahuri Bridge to from Manawatu confluence at approx. NZMS 260 (S24:167-826) to Awahuri Bridge at approx. NZMS 260 S23:243-002
	Kiwitea (Mana_12d)	Kiwitea Stream source to from Oroua confluence at approx. NZMS 260 (T23:309-066) to source
	Makino (Mana_12e)	Makino Stream source to from Oroua confluence at approx. NZMS 260 (S23:243-004) to source
Coastal Manawatu (Mana_13)	Coastal Manawatu (Mana_13a)	Manawatu River Oroua confluence to from <i>mouth</i> ⁴ at approx. NZMS 260 (S24:977-788) to Oroua confluence at approx. NZMS 260 S24:167-826 (excluding the Manawatu River from the cross-river CMA boundary at approx. NZMS 260 S24:009-766 to the <i>mouth</i> ⁴)
	Upper Tokomaru (Mana_13b)	Tokomaru River source to from Horseshoe Bend at approx. NZMS 260 (S24:241-768) to source
	Lower Tokomaru (Mana_13c)	Tokomaru River Horseshoe Bend to from Manawatu confluence at approx. NZMS 260 (S24:134-727) to Horseshoe Bend at approx. NZMS 260 S24:241-768
	Mangaore (Mana_13d)	Mangaore River source to from Manawatu confluence at approx. NZMS 260 (S24:123-717) to source
	Koputaroa (Mana_13e)	Koputaroa Stream source to from Manawatu confluence at approx. NZMS 260 (S24:106-708) to source
	Foxton Loop (Mana_13f)	Manawatu River at SH1 to from downstream limit of Whirikino Cut at approx. NZMS 260 (S24:010-769) to SH 1



Map D-3 Rangitikei Catchment Water Management Zones and Sub-zones



Map Ba 3: Rangitikei Catchment - Surface Water Management Zones* and Sub-zones (refer to Table Ba3 for Water Management Sub-zone * names).

Table Ba3: Description of Rangitikei Catchment Surface *Water Management Zones** and Sub-zones⁴

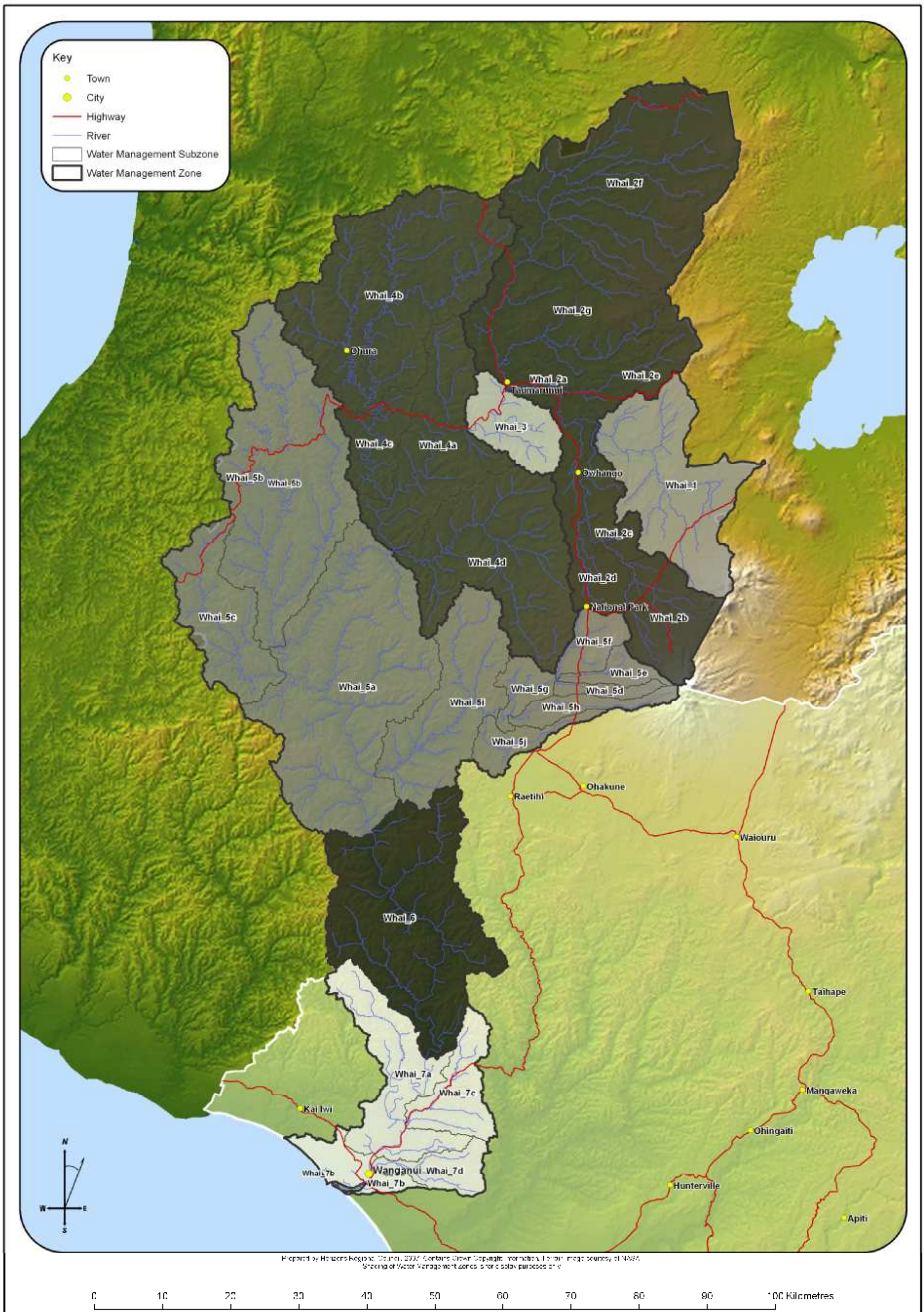
Management Zone	Sub-zone	Sub-zone Description [†]
Upper Rangitikei (Rang_1)	Upper Rangitikei	Rangitikei River – source to from Makahikatoa Stream <u>at approx. NZMS 260 (U21:726-888) to source</u>
Middle Rangitikei (Rang_2)	Middle Rangitikei (Rang_2a)	Rangitikei River – Makahikatoa Stream to from Pukeokahu <u>at approx. NZMS 260 (U21:713-708) to Makahikatoa Stream at approx. NZMS 260 U21:726-888</u>
	Pukeokahu – Mangaweka (Rang_2b)	Rangitikei River <u>main stem –Pukeokahu to from Mangaweka at approx. NZMS 260 (T22:504-513) to Pukeokahu at approx. NZMS 260 U21:713-708</u>
	Upper Moawhango (Rang_2c)	Moawhango River – source to from Moawhango Dam <u>at approx. NZMS 260 (T20:469-960) to source</u>
	Middle Moawhango (Rang_2d)	Moawhango River <u>Dam to from Moawhango Township at approx. NZMS 260 (T21:557-745) to Moawhango Dam at approx. NZMS 260 T20:469-960</u>
	Lower Moawhango (Rang_2e)	Moawhango River <u>Moawhango Township to from Rangitikei confluence at approx. NZMS 260 (T21:609-623) to Moawhango Township at approx. NZMS 260 T21:557-745</u>
	Upper Hautapu (Rang_2f)	Hautapu River – source to from Taihape <u>at approx. NZMS 260 (T21:506-670) to source</u>
	Lower Hautapu (Rang_2g)	Hautapu River – Taihape to from Rangitikei confluence <u>at approx. NZMS 260 (T22:529-574) to Taihape at approx. NZMS 260 T21:506-670</u>
Lower Rangitikei (Rang_3)	Lower Rangitikei (Rang_3a)	Rangitikei River – Mangaweka to from Onepuhi <u>at approx. NZMS 260 (S23: 201- 222) to Mangaweka at approx. NZMS 260 T22:504-513</u>
	Makohine (Rang_3b)	Makohine Stream – source to from Rangitikei confluence <u>at approx. NZMS 260 (T22:400-443) to source</u>
Coastal Rangitikei (Rang_4)	Coastal Rangitikei (Rang_4a)	Rangitikei River – Onepuhi to from McKelvies <u>at approx. NZMS 260 (S24:033-985) to Onepuhi at approx. NZMS 260 S23:201- 222</u>
	Tidal Rangitikei (Rang_4b)	Rangitikei River – McKelvies to from the mouth^ <u>at approx. NZMS 260 (S24:991-984) to McKelvies at approx. NZMS 260 S24:033-985 (excluding the Rangitikei River from the cross-river CMA boundary at approx. NZMS 260 S23:009-001 to the mouth^)</u>
	Porewa (Rang_4c)	Porewa Stream – source to from Rangitikei confluence <u>at approx. NZMS 260 (S23:190-212) to source</u>
	Tutaenui (Rang_4d)	Tutaenui Stream – source to from Rangitikei confluence <u>at approx. NZMS 260 (S23:101-095) to source</u>

⁴ Note to the hearing panel: This is a new table, but the information comes from the first three columns of Table D.2 in the Proposed One Plan

[†] Includes all inflowing tributaries and surrounding catchment area unless otherwise specified.



Map D-4 Whanganui Catchment Water Management Zones and Sub-zones



Map Ba 4: Whanganui Catchment - Surface Water Management Zones* and Sub-zones (refer to Table Ba4 for Water Management Sub-zone * names)

.

Table Ba4: Description of Whanganui Catchment Surface *Water Management Zones** and Sub-zones⁵

Management Zone	Sub-zone	Sub-zone Description ⁶
Upper Whanganui (Whai_1)	Upper Whanganui	Whanganui River source to from Whakapapa confluence at approx. NZMS 260 (S19: 189-499) to source
Cherry Grove (Whai_2)	Cherry Grove (Whai_2a)	Whanganui River Whakapapa confluence to from Cherry Grove at approx. NZMS 260 (S18:057-545) to Whakapapa confluence at approx. NZMS 260 S19: 189-499
	Upper Whakapapa (Whai_2b)	Whakapapa River source to from Footbridge at approx. NZMS 260 (S19: 226-293) to source
	Lower Whakapapa (Whai_2c)	Whakapapa River Footbridge to from Whanganui confluence at approx. NZMS 260 (S19:189-499) to Footbridge at approx. NZMS 260 S19: 226-293
	Piopiotea (Whai_2d)	Piopiotea Stream source to from Whakapapa confluence at approx. NZMS 260 (S19:174-356) to source
	Pungapunga (Whai_2e)	Pungapunga River source to from Whanganui confluence at approx. NZMS 260 (S18:124-546) to source
	Upper Ongarue (Whai_2f)	Ongarue River source to from Waihuka Stream confluence at approx. NZMS 260 (S18:108-785) to source
	Lower Ongarue (Whai_2g)	Ongarue River Waihuka Stream to from Whanganui confluence at approx. NZMS 260 (S18:056-547) to Waihuka Stream
Te Maire (Whai_3)	Te Maire	Whanganui River Cherry Grove to from Te Maire at approx. NZMS 260 (S19: 998-490) to Cherry Grove at approx. NZMS 260 S18:057-545
Middle Whanganui (Whai_4)	Middle Whanganui (Whai_4a)	Whanganui River Te Maire to from Retaruke confluence (Wades Landing/Whakahore) at approx. NZMS 260 (R19: 886-306) to Te Maire
	Upper Ohura (Whai_4b)	Ohura River source to from Tokorima at approx. NZMS 260 (R18:863-521) to source
	Lower Ohura (Whai_4c)	Ohura River Tokorima to from Whanganui confluence at approx. NZMS 260 (R19:887-386) to Tokorima at approx. NZMS 260 R18:863-521
	Retaruke (Whai_4d)	Retaruke River source to from Whanganui confluence at approx. NZMS 260 (R19:890-309) to source
Pipiriki (Whai_5)	Pipiriki (Whai_5a)	Whanganui River Retaruke confluence to from Pipiriki at approx. NZMS 260 (R21: 859-897) to Retaruke confluence
	Tangarakau (Whai_5b)	Tangarakau River source to from Whanganui confluence at approx. NZMS 260 (R20:714-175) to source
	Whangamomona (Whai_5c)	Whangamomona River source to from Whanganui confluence at approx. NZMS 260 (R20:731-130) to source
	Upper Manganui o te Ao (Whai_5d)	Manganui o te Ao River source to Hoihenga Road (S20:047-077) from Makatote confluence at approx. NZMS 260 S20:129-120 to source
	Makatote (Whai_5e)	Makatote River from the confluence with the Manganui o te Ao River at approx. NZMS 260 S20:129-120 to source

⁵ Note to the hearing panel: This is a new table, but the information comes from the first three columns of Table D.2 in the Proposed One Plan

⁶ Includes all inflowing tributaries and surrounding catchment area unless otherwise specified.

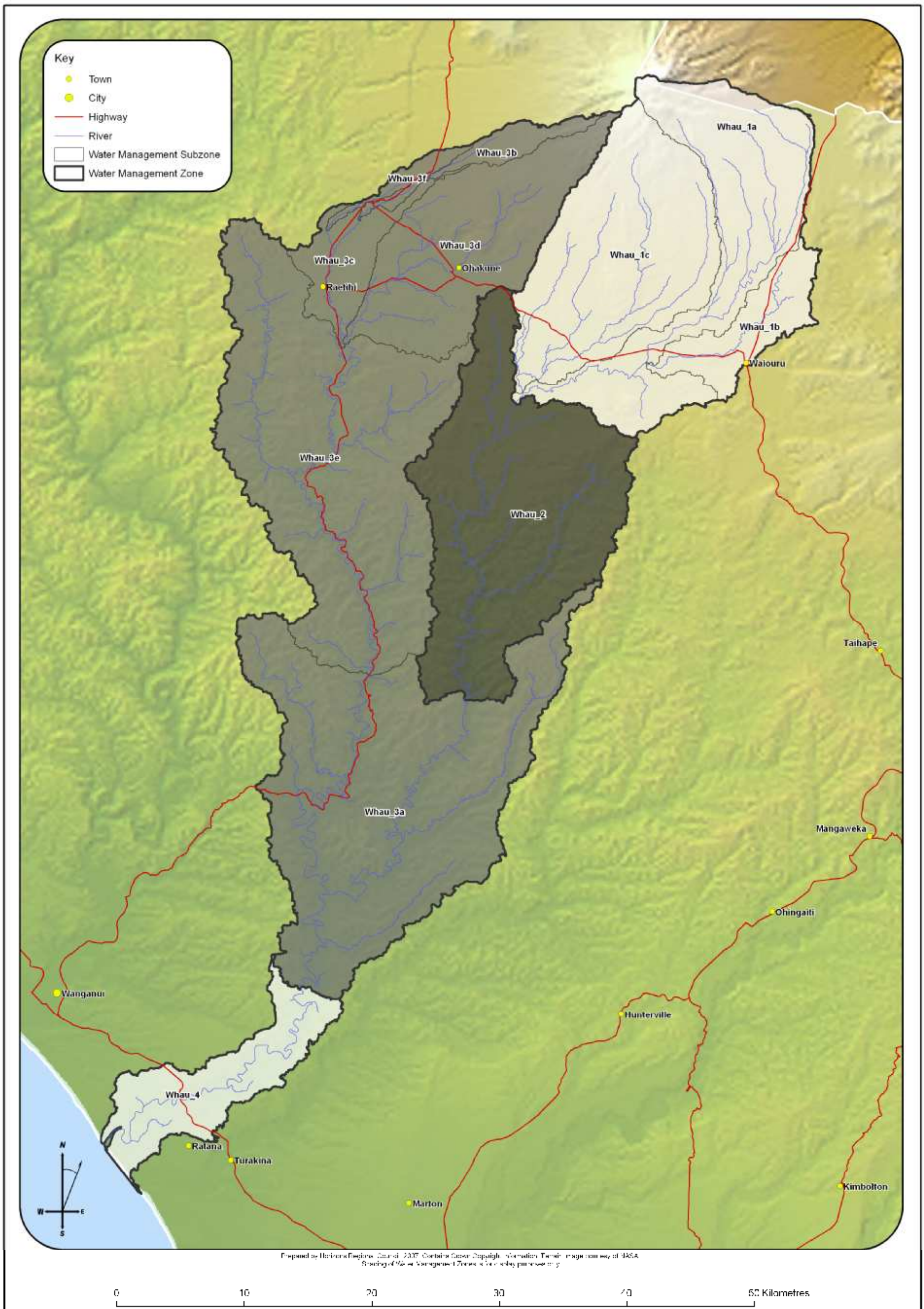
Table Ba4: Description of Whanganui Catchment Surface *Water Management Zones** and Sub-zones⁵

Management Zone	Sub-zone	Sub-zone Description [†]
	<u>Waimarino</u> (Whai_5f)	<u>Waimarino Stream from the confluence with the Makatote River at approx. NZMS 260 S20:129-120 to source</u>
	<u>Middle Manganui o te Ao</u> (Whai_5g)	<u>Manganui o te Ao River from Hoihenga Road at approx. NZMS 260 S20:047-077 to Makatote confluence at approx. NZMS 260 S20:129-120</u>
	Mangaturuturu (Whai_5h)	<u>Mangaturuturu River from the confluence with the Manganui o te Ao River at approx. NZMS 260 S20:057-067 to source</u>
	Lower Manganui o te Ao (Whai_5ei)	<u>Manganui o te Ao River – Hoihenga Road to from Whanganui confluence at approx. NZMS 260 (R20:861-979) to Hoihenga Road at approx. NZMS 260 S20:047-077.</u>
	<u>Orautoha</u> (Whai_5j)	<u>Orautoha Stream from the confluence with the Manganui o te Ao River at approx. NZMS 260 S20:026-067 to source</u>
Paetawa (Whai_6)	Paetawa	<u>Whanganui River – Pipiriki to from Paetawa at approx. NZMS 260 (S22: 937-566) to Pipiriki at approx. NZMS 260 R21: 859-897</u>
Lower Whanganui (Whai_7)	Lower Whanganui (Whai_7a)	<u>Whanganui River – Paetawa to from Aramoho Bridge at approx. NZMS 260 (R22:858-420) to Paetawa at approx. NZMS 260 S22: 937-566</u>
	Coastal Whanganui (Whai_7b)	<u>Whanganui River – Aramoho Bridge to from <i>mouth</i> at approx. NZMS 260 (R22:797-328) to Aramoho Bridge at approx. NZMS 260 R22:858-420 (excluding the Whanganui River from the cross-river CMA boundary at approx. NZMS 260 R22:848-380 to the <i>mouth</i>)</u>
	Upokongaro (Whai_7c)	<u>Upokongaro River – source to from Whanganui confluence at approx. NZMS 260 (S22:908-463) to source</u>
	Matarawa (Whai_7d)	<u>Matarawa River – source to from Whanganui confluence at approx. NZMS 260 (R22:857-403) to source</u>

* Includes all inflowing tributaries and surrounding catchment area unless otherwise specified.



Map D:5 Whangaehu Catchment Water Management Zones and Sub-zones



Map Ba 5: Whangaehu Catchment - Surface Water Management Zones* and Sub-zones (refer to Table Ba5 for Water Management Sub-zone* names).

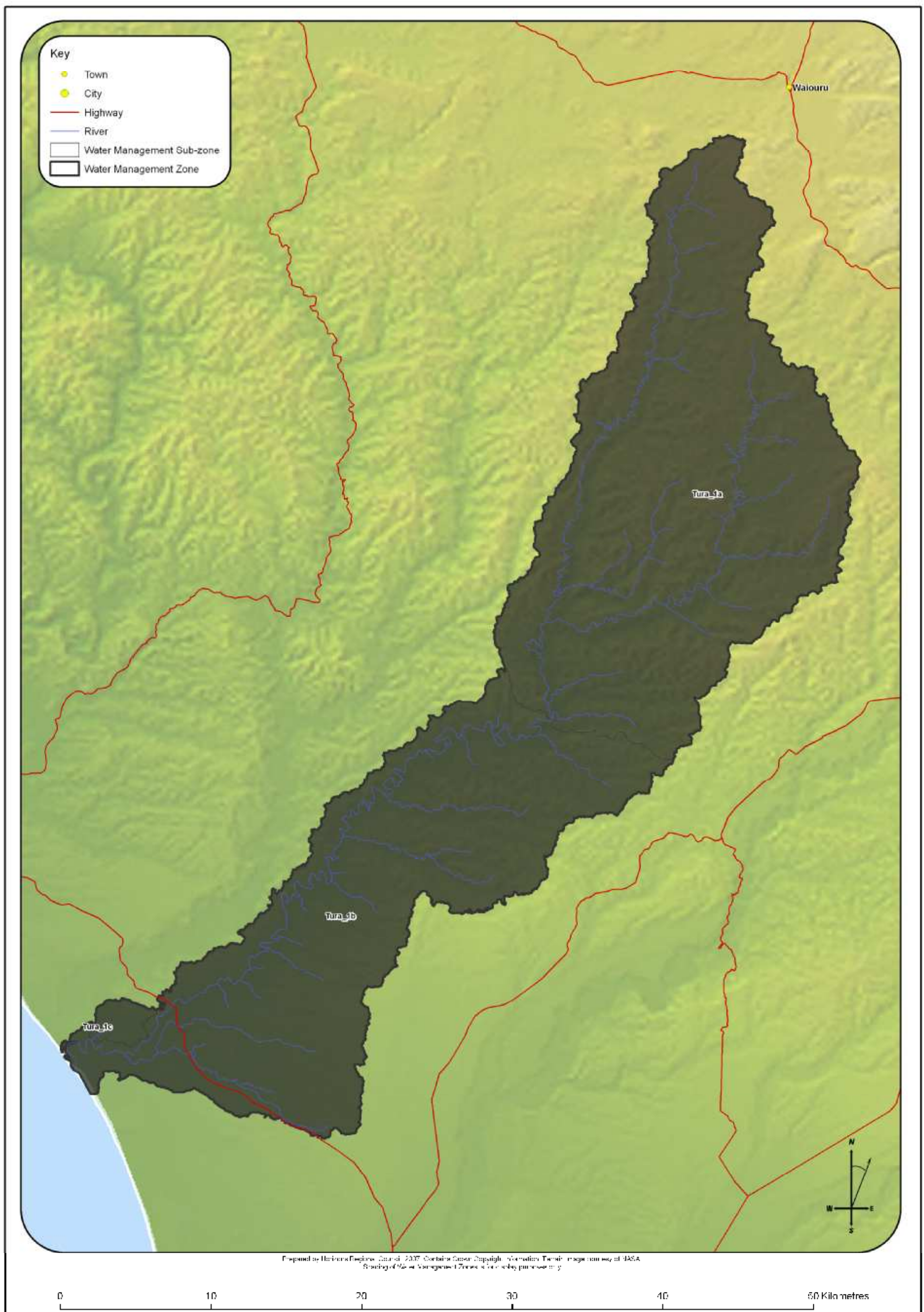
Table Ba5: Description of Whangaehu Catchment Surface *Water Management Zones** and Sub-zones⁶

Management Zone	Sub-zone	Sub-zone Description ⁷
Upper Whangaehu (Whau_1)	Upper Whangaehu (Whau_1a)	Whangaehu River source to from Karioi at approx. NZMS 260 (S21: 218-864) to source
	Waitangi (Whau_1b)	Waitangi Stream source to from Whangaehu confluence at approx. NZMS 260 (T21:316-888) to source
	Tokiahuru (Whau_1c)	Tokiahuru Stream source to from Whangaehu confluence at approx. NZMS 260 (S21:219-865) to source
Middle Whangaehu (Whau_2)	Middle Whangaehu	Whangaehu River Karioi to from Aranui at approx. NZMS 260 (S21: 175-627 to Karioi at approx. NZMS 260 S21: 218-864
Lower Whangaehu (Whau_3)	Lower Whangaehu (Whau_3a)	Whangaehu River Aranui to from Kauangaroa at approx. NZMS 260 (S22:045-397) to Aranui NZMS 260 S21: 175-627 (including the Mangawhero River from Raupiu Road to Whangaehu confluence to Raupiu Road))
	Upper Makotuku (Whau_3b)	Makotuku River source to Water from water supply weir at approx. NZMS 260 (S20:103-011) to source
	Lower Makotuku (Whau_3c)	Makotuku River Water supply weir to from Mangawhero confluence at approx. NZMS 260 (S20:080-903) to water supply weir at approx. NZMS 260 S20:103-011
	Upper Mangawhero (Whau_3d)	Mangawhero River source to from Makotuku confluence at approx. NZMS 260 (S20:080-903) to source
	Lower Mangawhero (Whau_3e)	Mangawhero River - Makotuku confluence to Raupiu Road at approx. NZMS 260 (S21:099-646) to Makotuku confluence at approx. NZMS 260 S20:080-903
	Makara (Whau_3f)	Makara Stream from the confluence with an unnamed tributary at approx. NZMS 260 S20:065-992 to source
Coastal Whangaehu (Whau_4)	Coastal Whangaehu	Whangaehu River Kauangaroa to from <i>mouth</i> [^] at approx. NZMS 260 (R23:890-275) to Kauangaroa (excluding the Whangaehu River from the cross-river CMA boundary at approx. NZMS 260 R23:903-287 to <i>mouth</i>)

⁶ Note to the hearing panel: This is a new table, but the information comes from the first three columns of Table D.2 in the Proposed One Plan
⁷ Includes all inflowing tributaries and surrounding catchment area unless otherwise specified.



Map D-6 Turakina Catchment Water Management Zones and Sub-zones



Map Ba 6: Turakina Catchment - Surface Water Management Zones* and Sub-zones (refer to Table Ba6 for Water Management Sub-zone* names).

Table Ba6: Description of Turakina Catchment Surface *Water Management Zone** and Sub-zones⁷

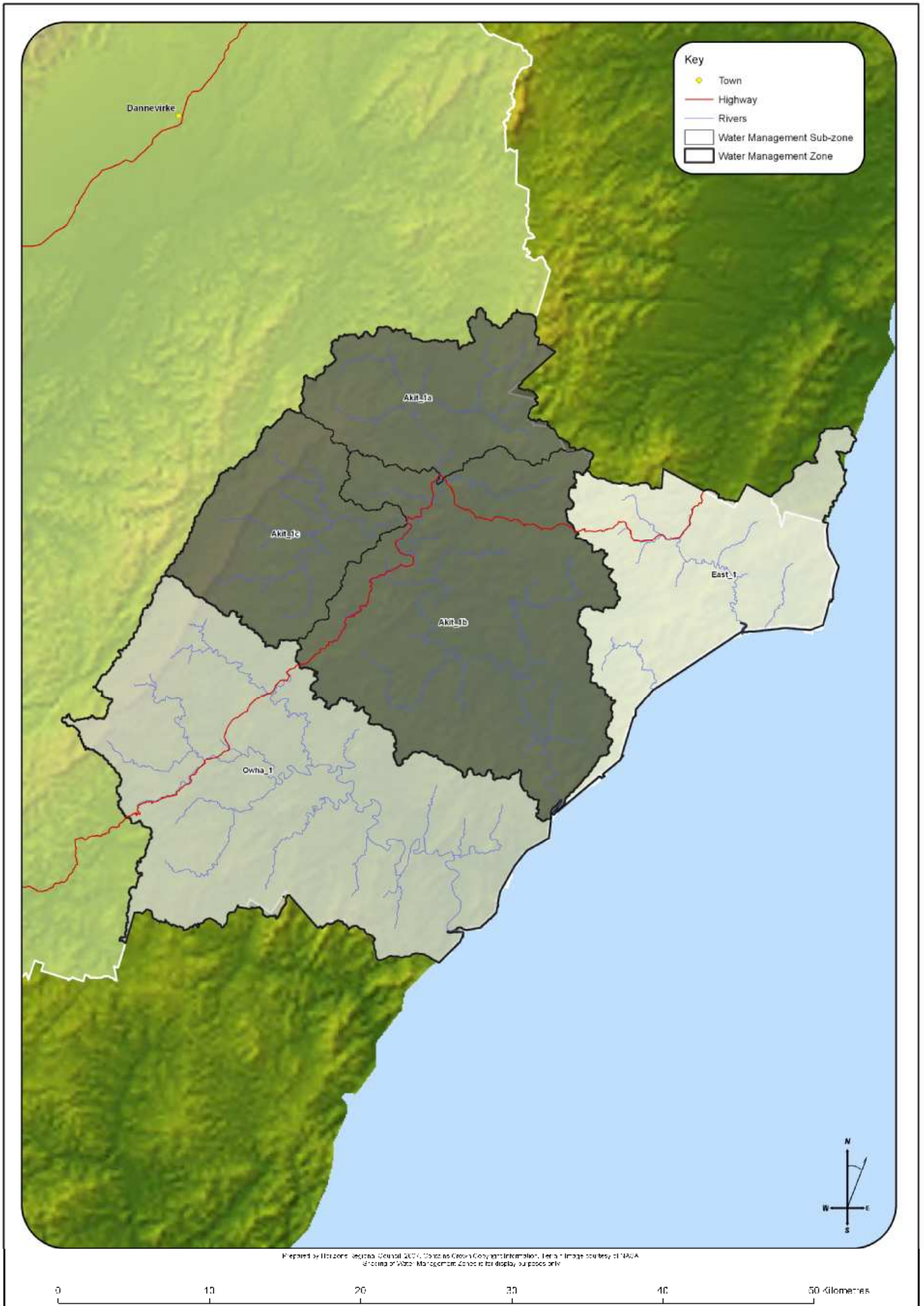
Management Zone	Sub-zone	Sub-zone Description [*]
Turakina (Tura_1)	Upper Turakina (Tura_1a)	Turakina River source to <u>from Otairie</u> at approx. NZMS 260 (S22:236-471) <u>to source</u>
	Lower Turakina (Tura_1b)	Turakina River Otaire to <u>from mouth</u> at approx. NZMS 260 (S23:924-231) <u>to Otairie (excluding the Turakina River from the cross-river CMA boundary at approx. NZMS 260 S23:921-254 to the mouth)</u>
	Ratana (Tura_1c)	Lakes Waipu and Oraekomiko and all surrounding catchment area

⁷ Note to the hearing panel: This is a new table, but the information comes from the first three columns of Table D.2 in the Proposed One Plan

* Includes all inflowing tributaries and surrounding catchment area unless otherwise specified.



Map D:7 East Coast Water Management Zones and Sub-zones



Map Ba 7: East Coast - Surface Water Management Zones* and Sub-zones (refer to Table Ba7 for Water Management Sub-zone* names).

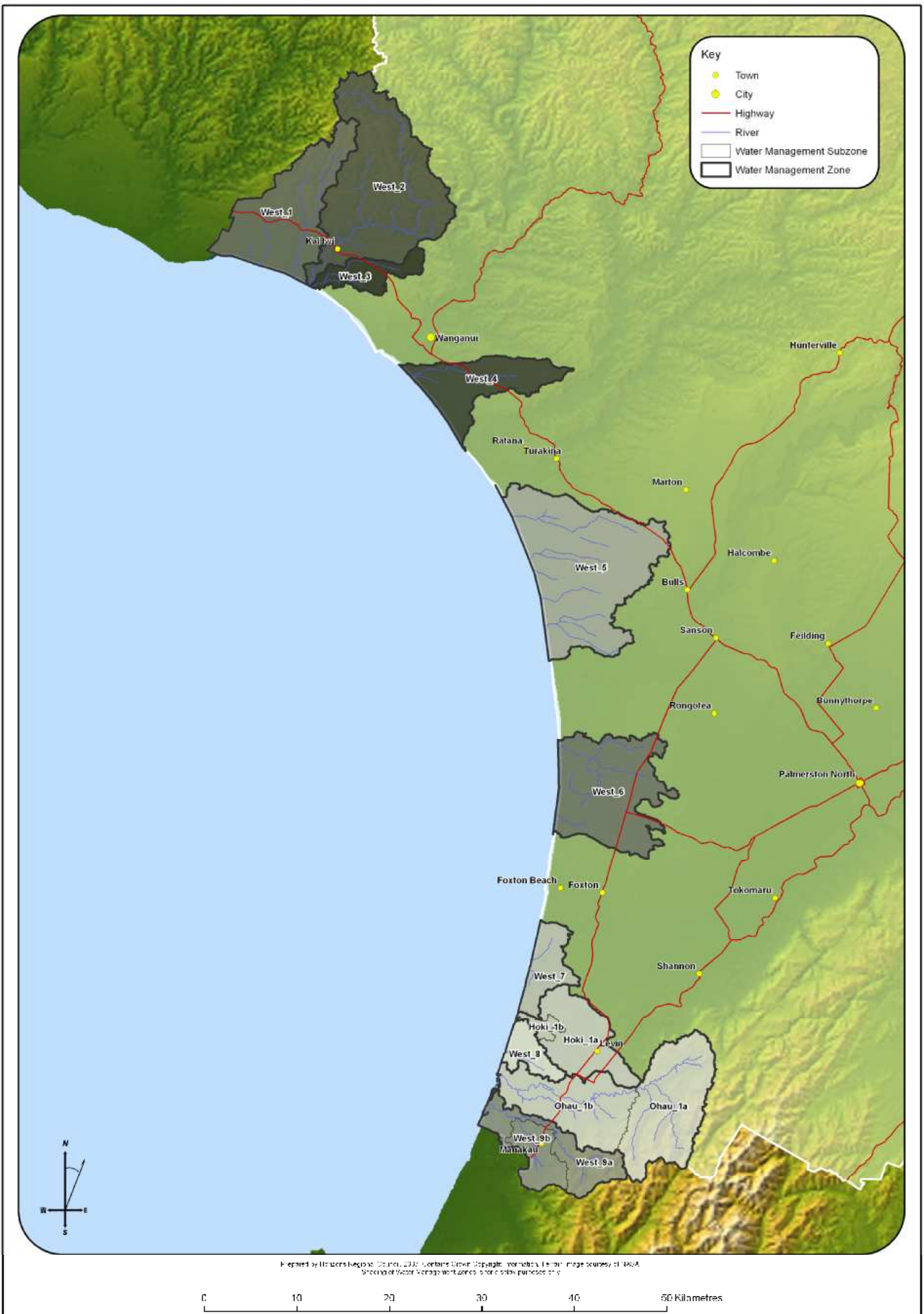
Table Ba7: Description of East Coast Surface *Water Management Zone** and Sub-zones⁸

Management Zone	Sub-zone	Sub-zone Description [*]
East Coast (East_1)	East Coast	Wainui, Tautane and Waimata – whole catchments from source to mouth [^] to source (excluding the Wainui River from the cross-river CMA boundary at approx. NZMS 260 U24:115-735 to mouth [^])
Akitio (Akit_1)	Upper Akitio (Akit_1a)	Akitio River source to from Weber Road at approx. NZMS 260 {U24: 919-832} to source
	Lower Akitio (Akit_1b)	Akitio River Weber Road to from mouth [^] at approx. NZMS 260 {U25:992-610} to Weber Road at approx. NZMS 260 U24: 919-832 (excluding the Akitio River from the cross-river CMA boundary at approx. NZMS 260 U25:915-554 to mouth [^])
	Waihi (Akit_1c)	Waihi Stream source to from Akitio confluence at approx. NZMS 260 {U24:895-801} to source
Owahanga (Owha_1)	Owahanga	Owahanga River source to from mouth [^] at approx. NZMS 260 {U25:932-532} to source (excluding the Owahanga River from the cross-river CMA boundary at approx. NZMS 260 U25:932-532 to the mouth [^])

⁸ Note to the hearing panel: This is a new table, but the information comes from the first three columns of Table D.2 in the Proposed One Plan
^{*} Includes all inflowing tributaries and surrounding catchment area unless otherwise specified.



Map D-8 West Coast Water Management Zones and Sub-zones



Map Ba 8: West Coast- Surface Water Management Zones* and Sub-zones (refer to Table Ba8 for Water Management Sub-zone* names).

Table Ba8: Description of West Coast Surface *Water Management Zone** and Sub-zones⁹

Management Zone	Sub-zone	Sub-zone Description [†]
Northern Coastal (West_1)	Northern Coastal	All coastal catchments and dune lakes between Kai Iwi and Waitotara catchments
Kai Iwi (West_2)	Kai Iwi	Kai Iwi Stream – source to from <i>mouth</i> [^] at approx. NZMS 260 (R23:723-449) to source (excluding the Kai Iwi Stream from the cross-river CMA boundary at approx. NZMS 260 R22:722-450 to the <i>mouth</i> [^])
Mowhanau (West_3)	Mowhanau	Mowhanau Stream – source to from <i>mouth</i> [^] at approx. NZMS 260 (R22:725-447) to source (excluding the Mowhanau Stream from the cross-river CMA boundary at approx. NZMS 260 R22:726-4448 to the <i>mouth</i> [^])
Kaitoke Lakes (West_4)	Kaitoke Lakes	Lakes Kaitoke, Pauri, Wiritoa, Kohata and all surrounding catchment area
Southern Whanganui Lakes (West_5)	Southern Whanganui Lakes	Lakes Vipan, Heaton, Bernard, William, Herbert, Hickson, Alice, Koitiata, Dudding and all surrounding catchment area
Northern Manawatu Lakes (West_6)	Northern Manawatu Lakes	All lakes and lagoons between Coastal Rangitikei and Coastal Manawatu and all surrounding catchment area
Waitarere (West_7)	Waitarere	All lakes and lagoons between Coastal Manawatu and Lake Horowhenua catchment and all surrounding catchment area
Lake Papaitonga (West_8)	Lake Papaitonga	Lake Papaitonga catchment
Waikawa (West_9)	Waikawa (West_9a)	Waikawa Stream – source to from <i>mouth</i> [^] at approx. NZMS 260 (S25:908-548) to source (excluding the Waikawa Stream from the cross-river CMA boundary at approx. NZMS 260 S25:915-554 to the <i>mouth</i> [^])
	Manakau (West_9b)	Manakau Stream from the confluence with the Waikawa Stream at approx. NZMS 260 S25:946-549 to source
Ohau (Ohau_1)	Upper Ohau (Ohau_1a)	Ohau River – source to from Rongomatane at approx. NZMS 260 (S25:072-577) to source
	Lower Ohau (Ohau_ba)	Ohau River – Rongomatane to from <i>mouth</i> [^] at approx. NZMS 260 (S25:918-578) to Rongomatane at approx. NZMS 260 S25:072-577 (excluding the Ohau River from the cross-river CMA boundary at approx. NZMS 260 S25:929-595 to the <i>mouth</i> [^])
Lake Horowhenua (Hoki_1)	Lake Horowhenua (Hoki_1a)	Whole lake catchment above Hokio Stream outlet
	Hokio (Hoki_1b)	Hokio Stream downstream of Lake Horowhenua outlet (excluding the Hokio Stream from the cross-river CMA boundary at approx. NZMS 260 S25:949-657 to the <i>mouth</i> [^])

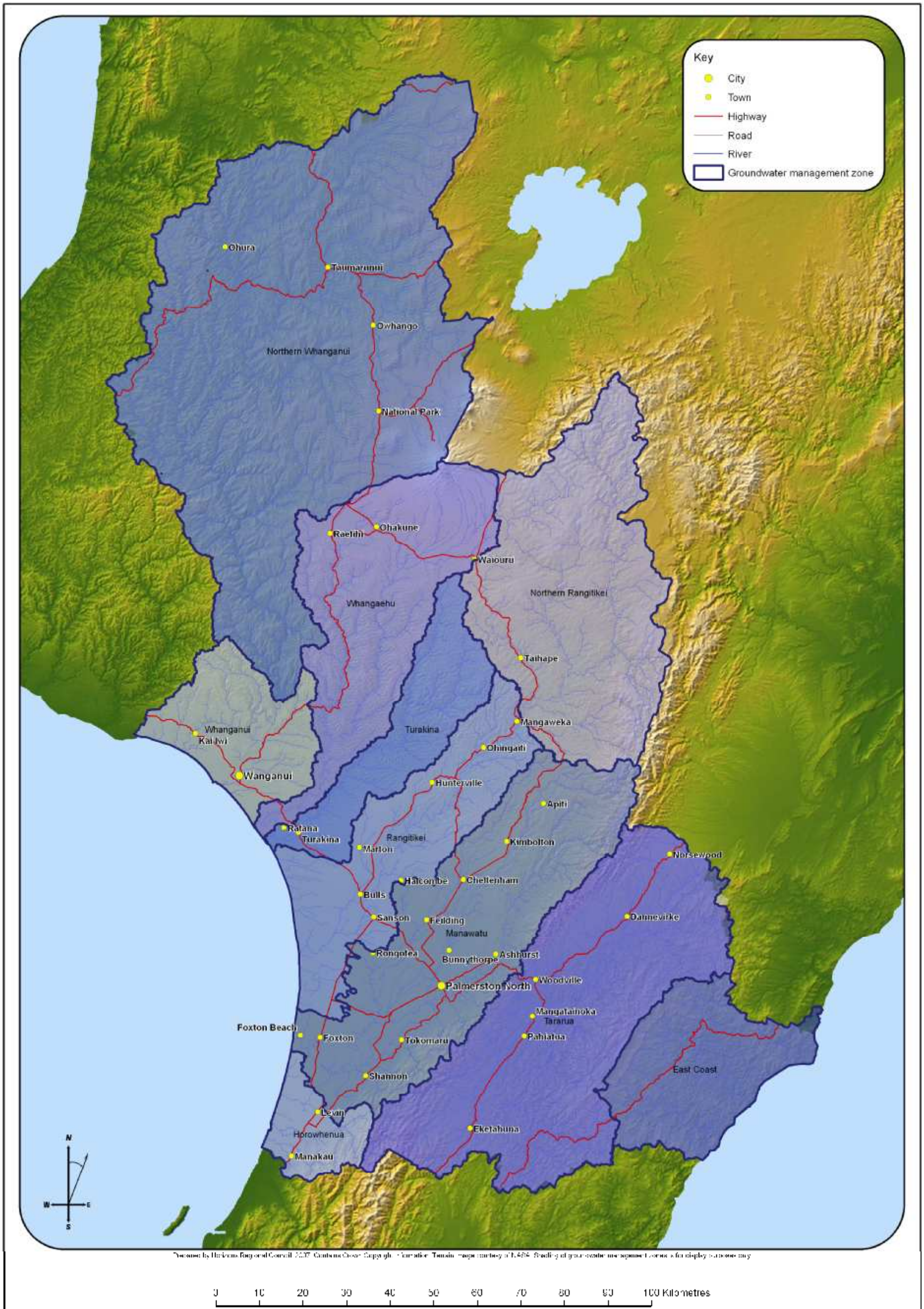
⁹ Note to the hearing panel: This is a new table, but the information comes from the first three columns of Table D.2 in the Proposed One Plan

[†] Includes all inflowing tributaries and surrounding catchment area unless otherwise specified.

PART Ba1.3: Groundwater Management Zone* Finder



Figure C:1 Groundwater Management Zones



Map Ba 9: *ZONE FINDER* showing *Groundwater Management Zones (GWMZ)** in the Manawatu-Wanganui Region (refer to Table Ba9 for *Groundwater Management Zone** names).

Table Ba9: Description of Groundwater Management Zones (GWMZ) ¹⁰	
Groundwater Management Zone*	Surface Water Management Zones* within GWMZ
1-Whanganui	<u>Lower Whanganui (Whai_7)</u>
	<u>Northern Coastal (West_1)</u>
	<u>Kai Iwi (West_2)</u>
	<u>Mowhanau (West_3)</u>
	<u>Southern Whanganui Lakes (West_4)</u>
2-Whangaehu	<u>Upper Whangaehu (Whau_1)</u>
	<u>Middle Whangaehu (Whau_2)</u>
	<u>Lower Whangaehu (Whau_3)</u>
	<u>Coastal Whangaehu (Whau_4)</u>
3-Turakina	<u>Turakina (Tura_1)</u>
4-Rangitikei	<u>Lower Rangitikei (Rang_3)</u>
	<u>Coastal Rangitikei (Rang_4)</u>
	<u>Kaitoke Lakes (West_5)</u>
	<u>Northern Manawatu Lakes (West_6)</u>
5-Manawatu	<u>Middle Manawatu (Mana_10)</u>
	<u>Lower Manawatu (Mana_11)</u>
	<u>Oroua (Mana_12)</u>
	<u>Coastal Manawatu (Mana_13)</u>
6-Horowhenua	<u>Lake Horowhenua (Hoki_1)</u>
	<u>Ohau (Ohau_1)</u>
	<u>Waitarere (West_7)</u>
	<u>Papaitonga (West_8)</u>
	<u>Waikawa (West_9)</u>
7-Tararua	<u>Upper Manawatu (Mana_1)</u>
	<u>Weber - Tamaki (Mana_2)</u>
	<u>Upper Tamaki (Mana_3)</u>
	<u>Upper Kumeti (Mana_4)</u>
	<u>Tamaki - Hopelands (Mana_5)</u>
	<u>Hopelands (Mana_6)</u>
	<u>Tiraumea (Mana_7)</u>
	<u>Mangatainoka (Mana_8)</u>
	<u>Upper Gorge (Mana_9)</u>
<u>East Coast</u>	<u>Akitio (Akit_1)</u>
	<u>Owahanga (Owha_1)</u>
	<u>East Coast (East_1)</u>
<u>Northern Rangitikei</u>	<u>Upper Rangitikei (Rang_1)</u>
	<u>Middle Rangitikei (Rang_2)</u>
<u>Northern Whanganui</u>	<u>Upper Whanganui (Whai_1)</u>
	<u>Cherry Grove (Whai_2)</u>
	<u>Te Maire (Whai_3)</u>
	<u>Middle Whanganui (Whai_4)</u>
	<u>Pipiriki (Whai_5)</u>
	<u>Paetawa (Whai_6)</u>

¹⁰ Note to the Hearing Panel: this is a new table but takes the information from the first two columns of the Table in Schedule C