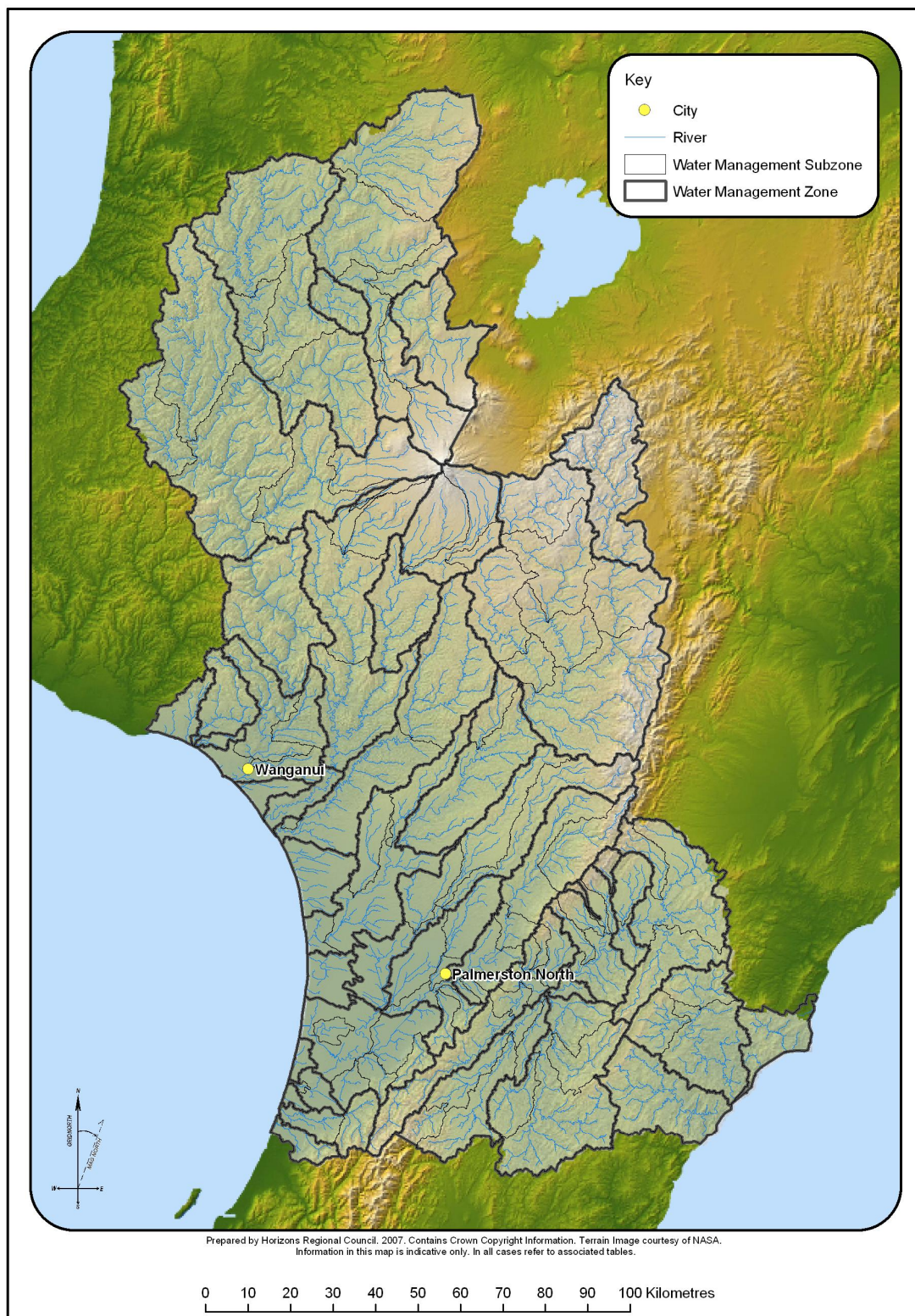
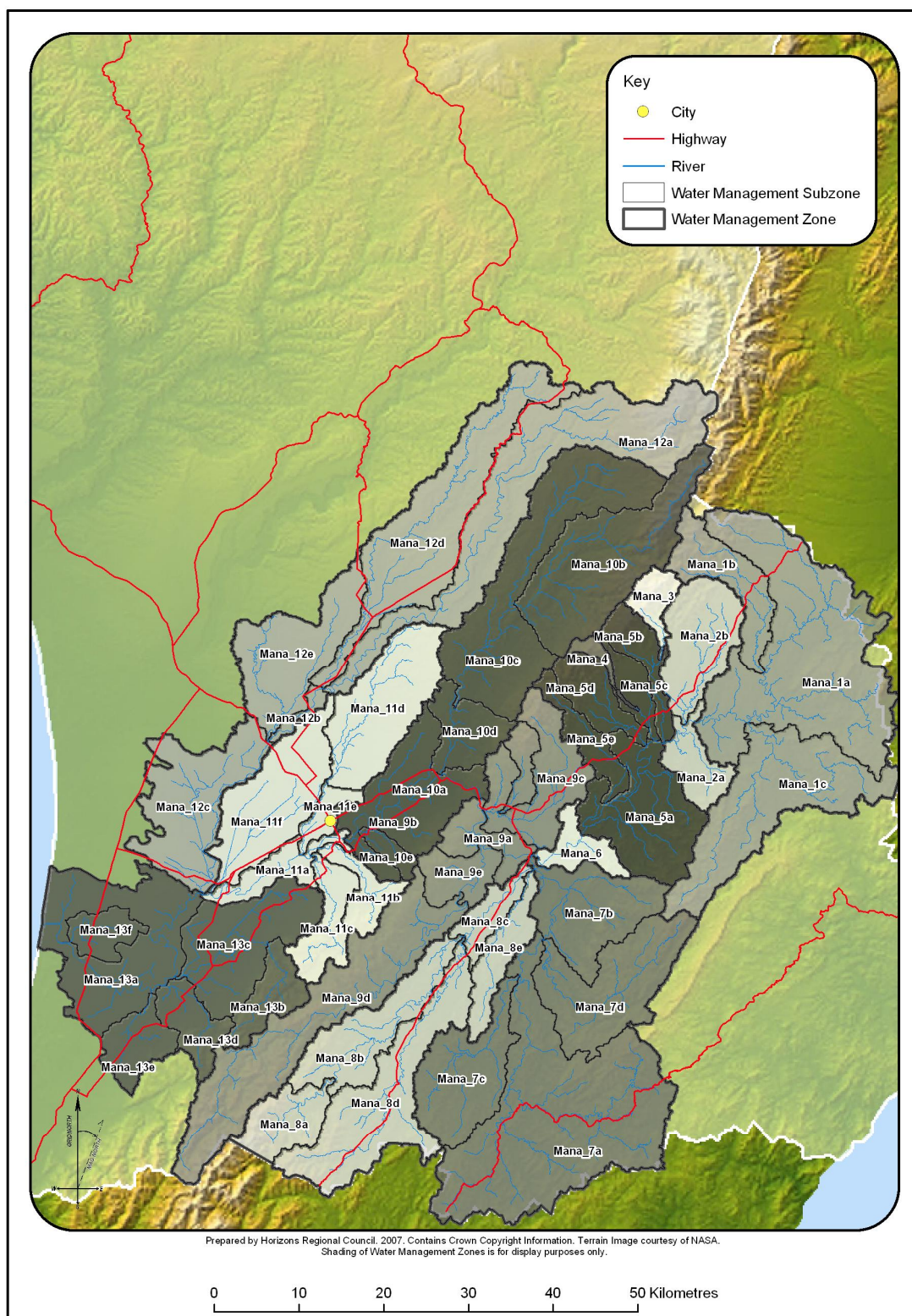


## Management Zones and Sub-zones



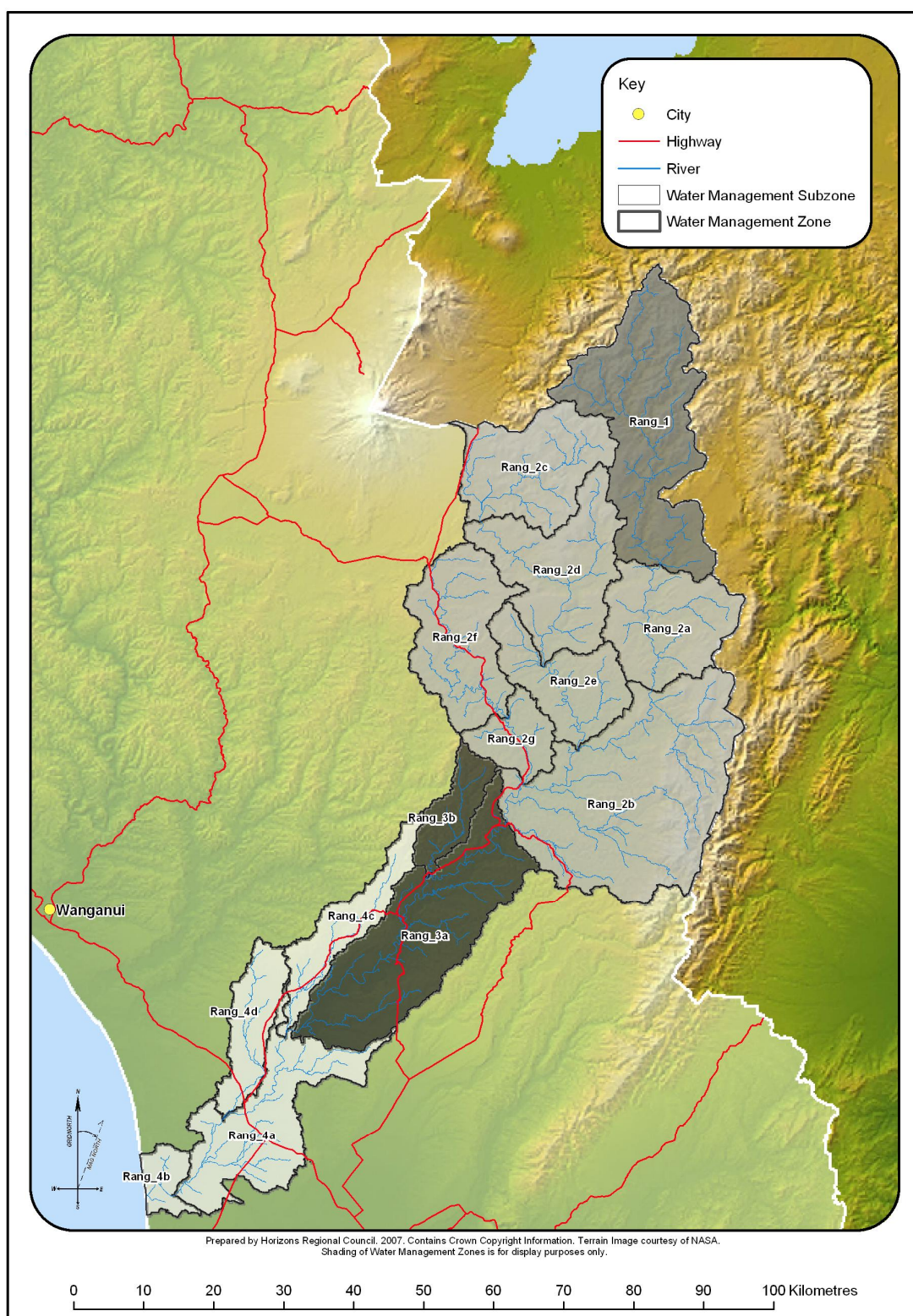
**Map D:1** Water Management Zones in the Manawatu-Wanganui Region





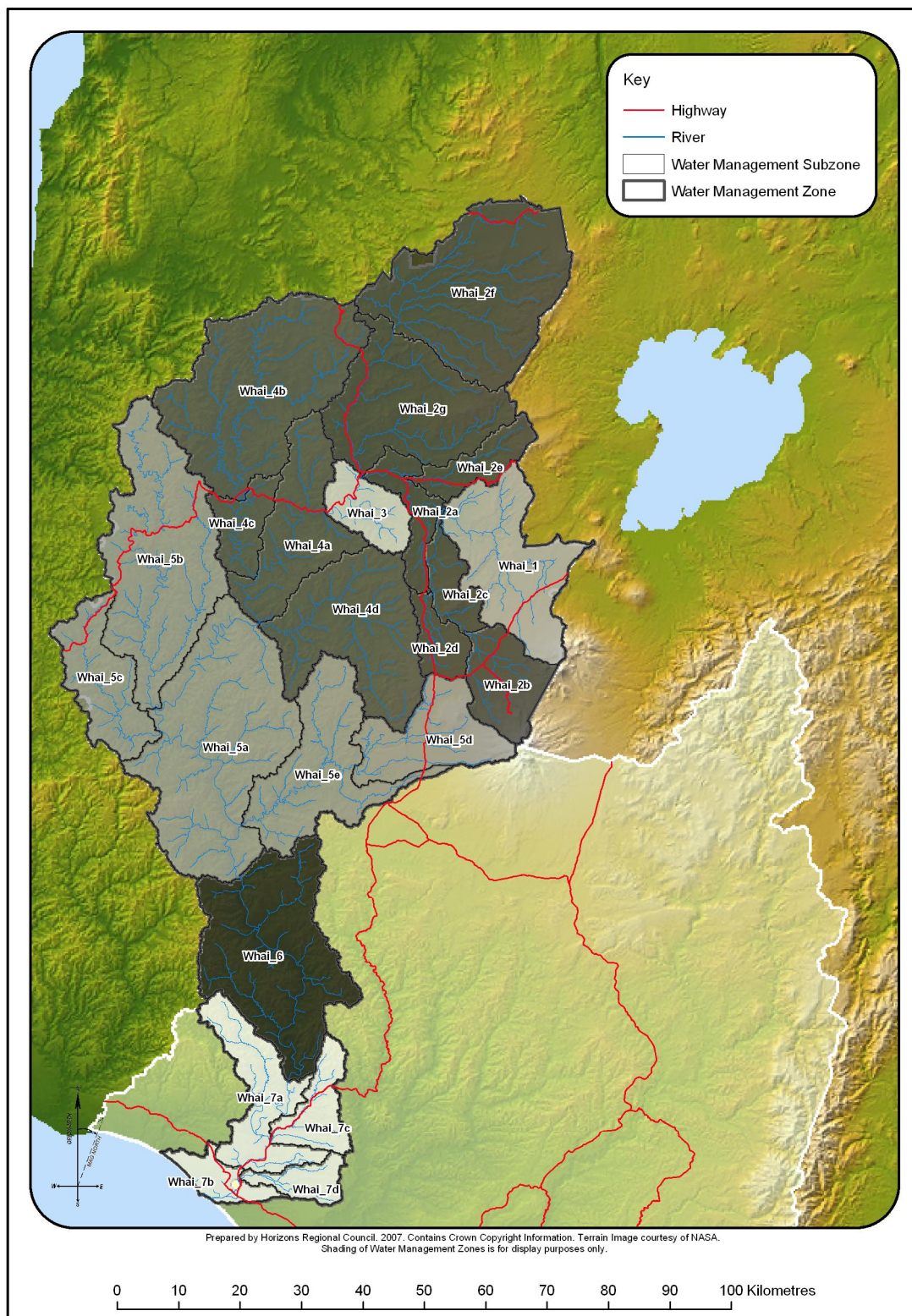
**Map D:2** Manawatu Catchment Water Management Zones and Sub-zones





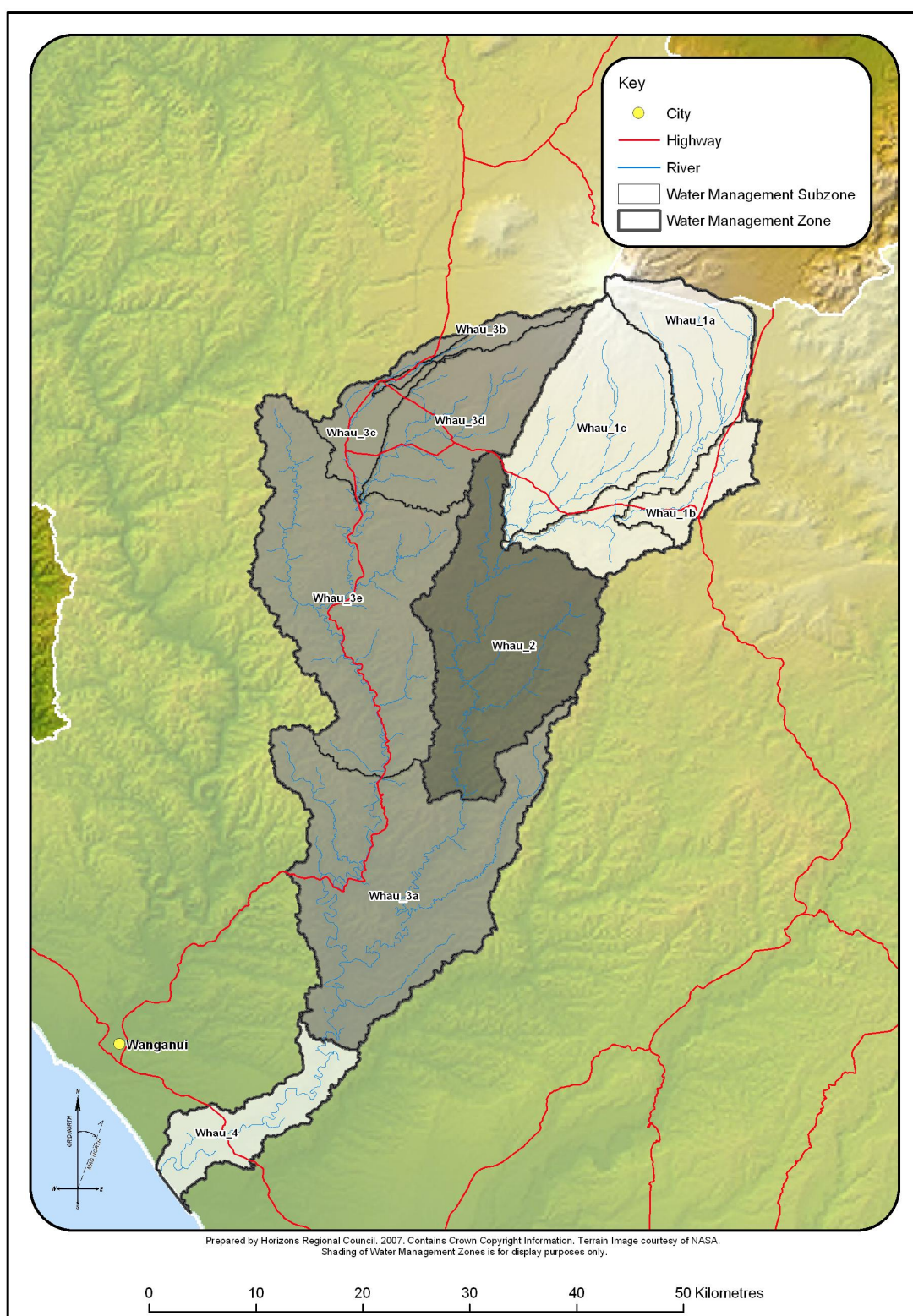
**Map D:3** Rangitikei Catchment Water Management Zones and Sub-zones





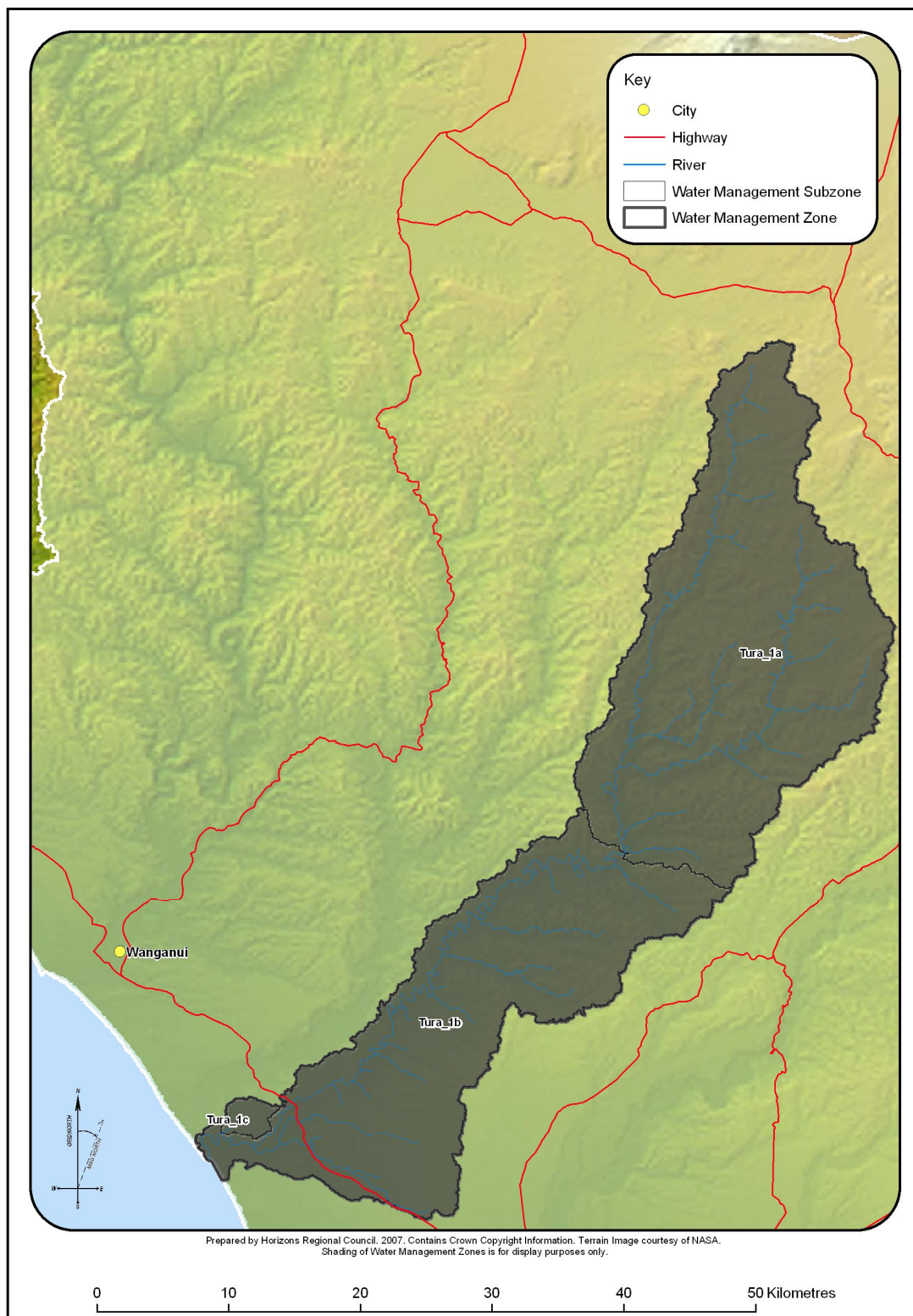
**Map D:4** Whanganui Catchment Water Management Zones and Sub-zones





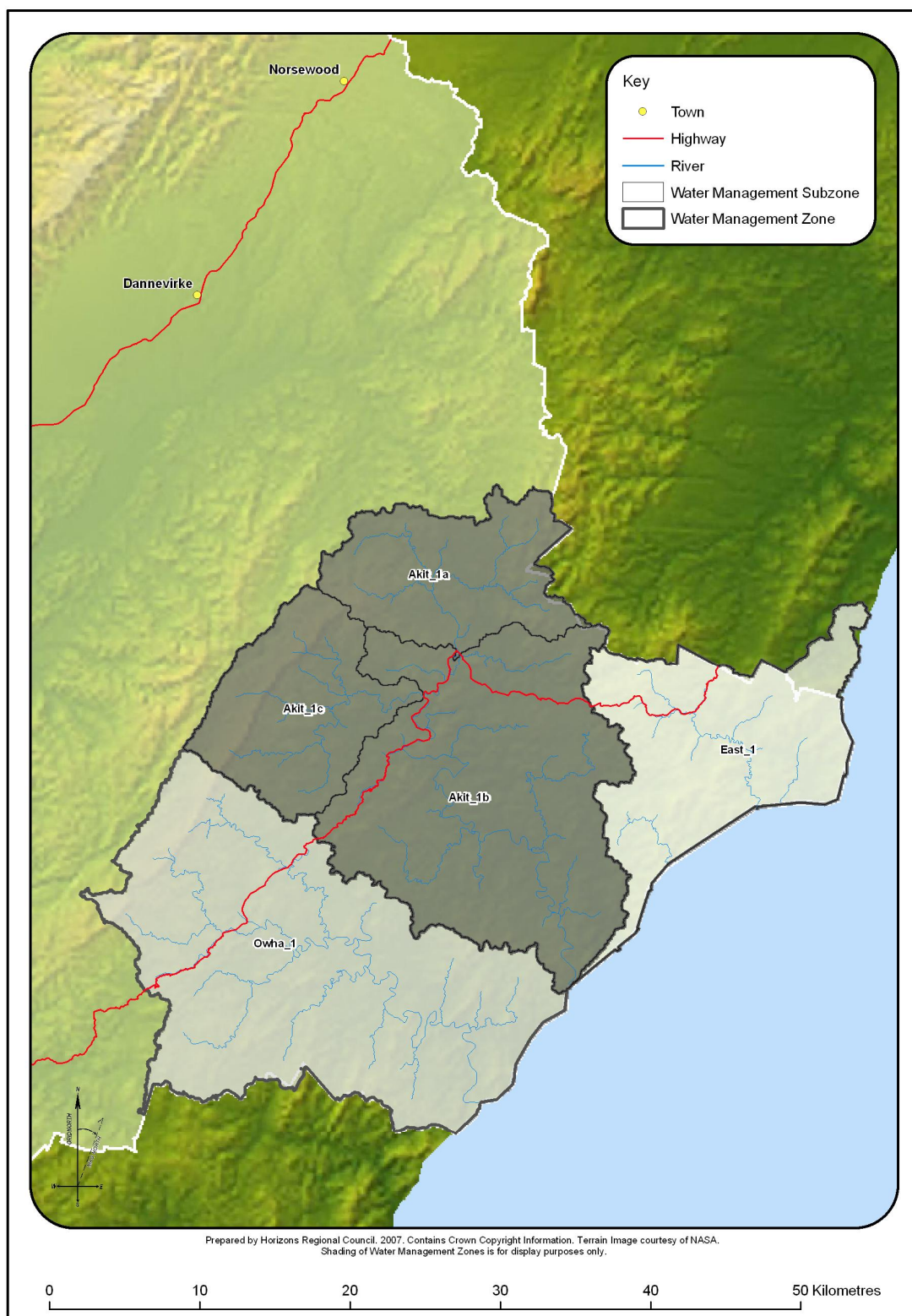
**Map D:5** Whangaehu Catchment Water Management Zones and Sub-zones





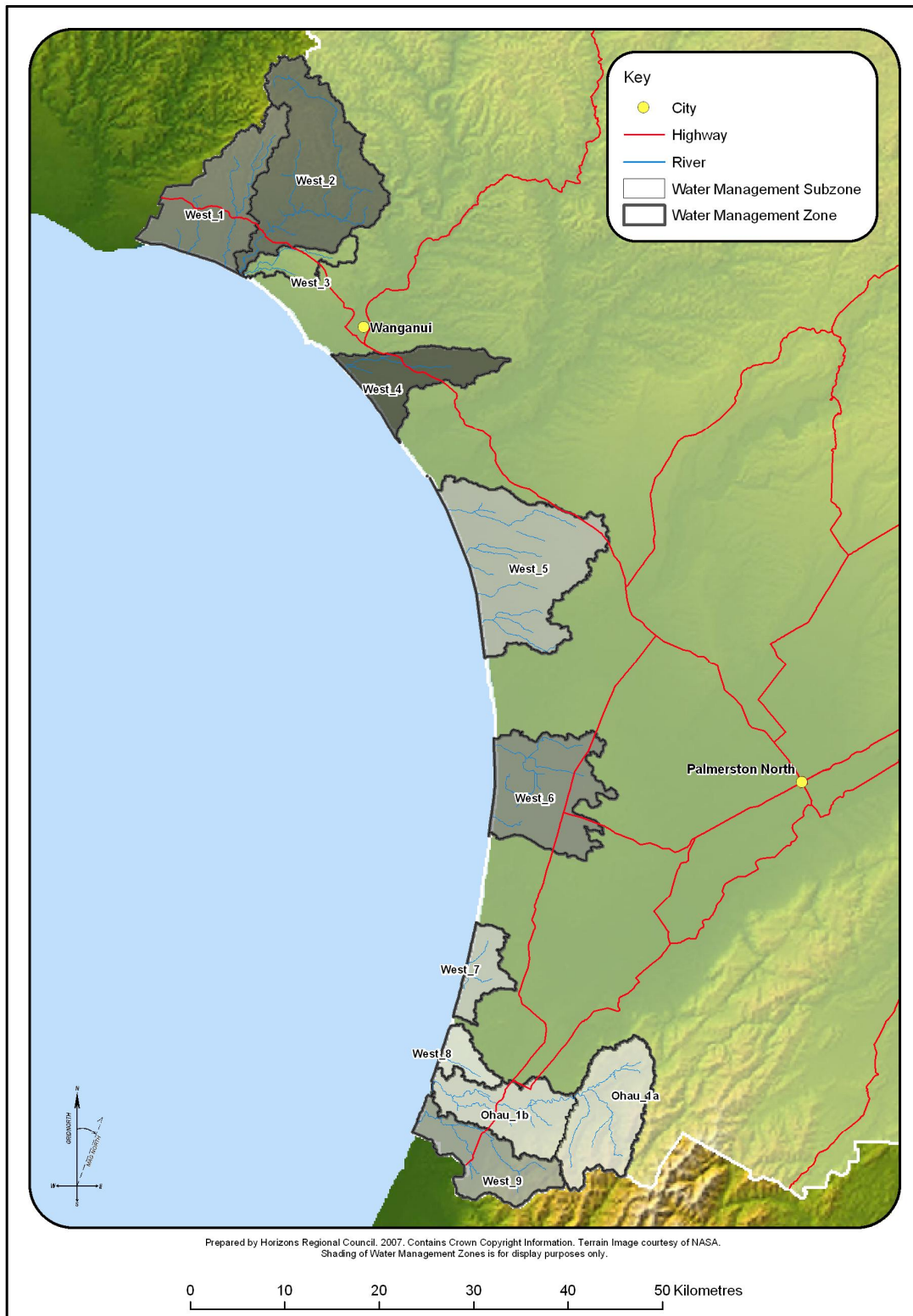
**Map D:6** Turakina Catchment Water Management Zone and Sub-zones





**Map D:7** East Coast Water Management Zones and Sub-zones

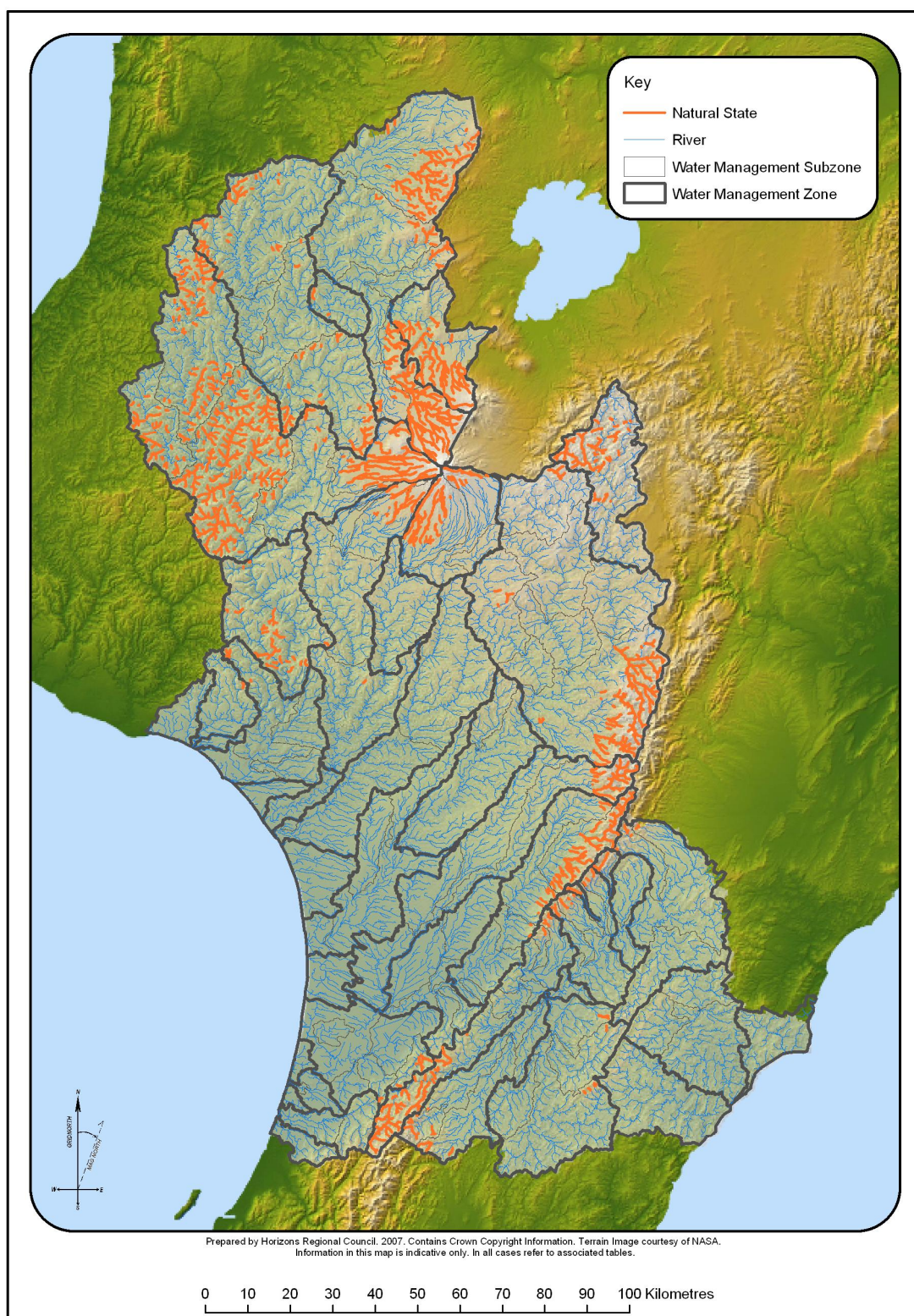




**Map D:8** West Coast Water Management Zones and Sub-zones



## Ecosystem Values



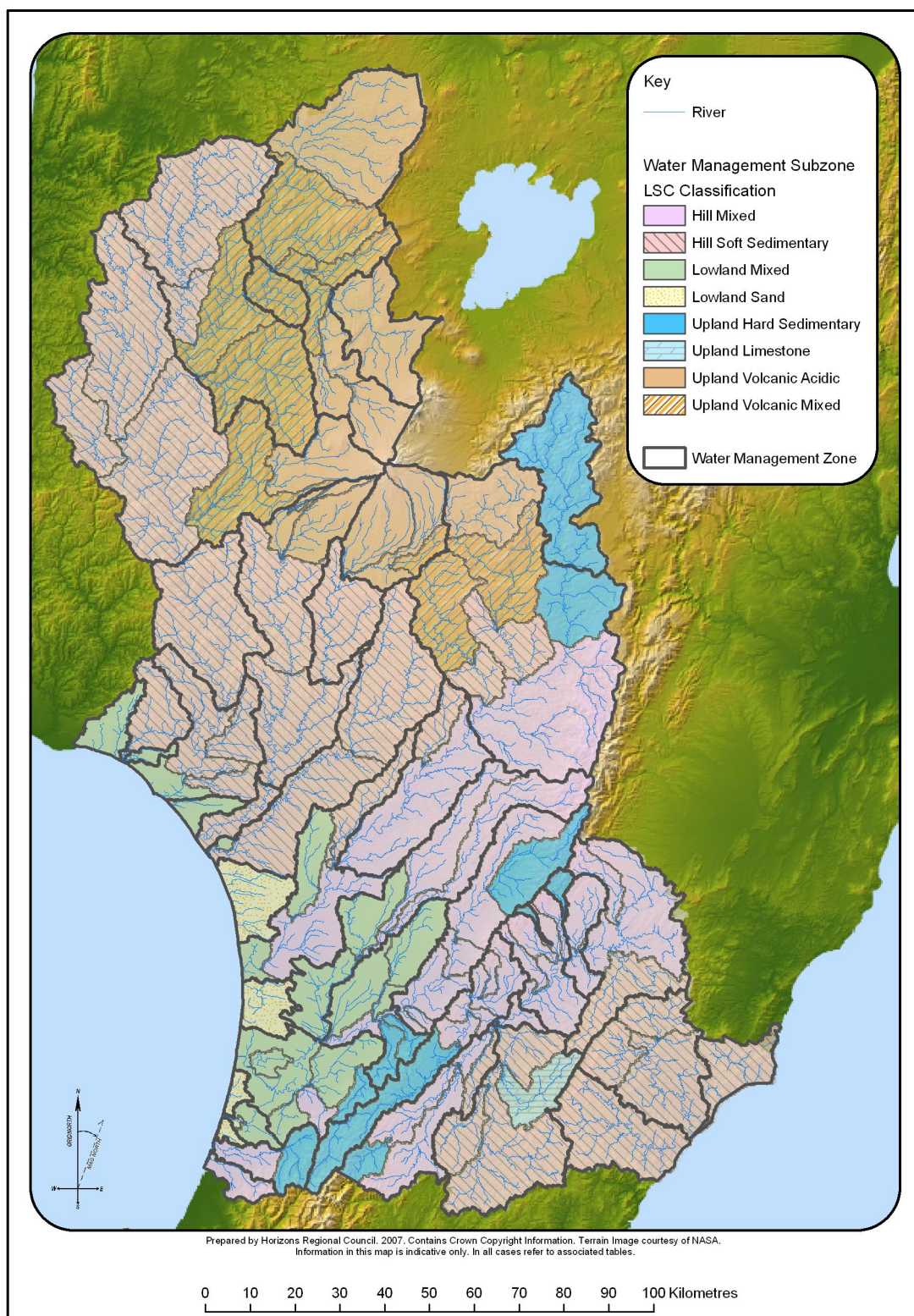
**Map D:9** Natural State Value in the Manawatu-Wanganui Region

**Natural State Definition:** All sections of rivers that have sources in, and flow in, the Public Conservation Land, with the exception of those where damming or diversion have significantly affected the natural state of the water (Table D.3).

**Table D.3:** Waterbodies within public conservation land excluded from the Natural State Value

Management Zone	Sub zone	River/Stream Name	Description
Upper Gorge	Upper and Lower Mangahao	Mangahao River	From Confluence with the Manawatu River at approx NZMS 260 T24:496-892 to the top of the Upper Dam at approx NZMS 260 S24:191-608
Coastal Manawatu	Upper and Lower Tokomaru	Tokomaru River	From Confluence with the Manawatu River at approx NZMS 260 S24:132-727 to top of the Tokomaru No.3 Reservoir at approx NZMS 260 S25:203-654
	Mangaore	Mangaore Stream	From Confluence with the Manawatu River at approx NZMS 260 S24:116-to Source





**Map D:10** Life Supporting Capacity Value in the Manawatu-Wanganui Region

**Table D.4:** Life Supporting Capacity Value by Management Zone/Sub-zone in the Manawatu-Wanganui Region

Management Zone	Sub zone	Description*	Life Supporting Capacity Classification
Upper Manawatu	Upper Manawatu	Manawatu River - source to Weber Road (U23:751 027)	HM
	Mangatewainui	Mangatewainui River - source to Manawatu confluence (U23:829 086)	HM
	Mangatoro	Mangatoro Stream - source to Manawatu confluence (U23:810 027)	HSS
Weber-Tamaki	Weber-Tamaki	Manawatu River - Weber Road to Tamaki confluence	HM
	Mangatera	Mangatera Stream - source to Manawatu confluence (U23:737 025)	HM
Upper Tamaki	Upper Tamaki	Tamaki River - source to water supply weir (U23:709 111)	UHS
Upper Kumeti	Upper Kumeti	Kumeti Stream - source to Te Rehunga flow recorder (T23:663 052)	UHS
Tamaki-Hopelands	Tamaki-Hopelands	Manawatu River - Tamaki confluence to Hopelands (T24: 616 899)	HM
	Lower Tamaki	Tamaki River - Water supply weir to Manawatu confluence (U23:709 002)	HM
	Lower Kumeti	Kumeti Stream - Te Rehunga to Manawatu confluence (U23:701 006)	HM
	Oruakeretaki	Oruakeretaki Stream - source to Manawatu confluence (T23:690 000)	HM
	Raparapawai	Raparapawai Stream - source to Manawatu confluence (T24:643 932)	HM
Hopelands-Tiraumea	Hopelands-Tiraumea	Manawatu River - Hopelands to Tiraumea confluence (Ngawapurua) (T24:553 870)	HM
Tiraumea	Upper Tiraumea	Tiraumea River - source to Ngaturi confluence (T24:578 780)	HSS
	Lower Tiraumea	Tiraumea River - Ngaturi confluence to Manawatu confluence (T24:555 870)	HSS
	Mangaone River	Mangaone River - source to Tiraumea confluence (T24:541 730)	HSS
	Makuri	Makuri River - source to Tiraumea confluence (T24:568 771)	ULi
Mangatainoka	Upper Mangatainoka	Source to Larsons Road	UHS
	Middle Mangatainoka	Larsons Road to downstream Makakahi confluence	HM
	Lower Mangatainoka	Makakahi confluence to Tiraumea confluence	HM
	Makakahi	Makakahi River - source to Mangatainoka confluence	HM
	Mangaramarama	Mangaramarama Creek - source to Mangatainoka confluence (T24:557 844)	HSS
Upper Gorge	Upper Gorge	Manawatu River – Tiraumea confluence to Upper Gorge flow recorder (T24:494 933)	HM
	Mangapapa	Mangapapa Stream - source to Mangaatua confluence (T24:515 922)	HM
	Mangaatua	Mangaatua Stream - source to Manawatu confluence (T24:496 925)	HM
	Upper Mangahao	Mangahao River - source to Balance (T24:468 818)	UHS

\* Includes all inflowing tributaries and catchment area unless otherwise specified.



Management Zone	Sub zone	Description*	Life Supporting Capacity Classification
	Lower Mangahao	Mangahao River - Ballance to Manawatu confluence (T24:496 891)	HM
Middle Manawatu	Middle Manawatu	Manawatu River - Upper Gorge to Teacher's College (T24:331 892)	HM
	Upper Pohangina	Pohangina River - source to Totara Reserve (T23:534 167)	UHS
	Middle Pohangina	Pohangina River – Totara Reserve to Mais Reach (T23:467 053)	HM
	Lower Pohangina	Pohangina River - Mais Reach to Manawatu confluence (T24:450 966)	HM
	Aokautere	Aokautere Stream - source to Manawatu confluence (T24:349 899)	HM
Lower Manawatu	Lower Manawatu	Manawatu River – Teacher's College to Oroua confluence (S24:167 826)	HM
	Turitea	Turitea Stream - source to Manawatu confluence (T24:304 881)	UHS
	Kahuterawa	Kahuterawa Stream - source to Manawatu confluence (S24:292 876)	UHS
	Upper Mangaone Stream	Mangaone Stream - source to Milson Line (T24:311 953)	LM
	Lower Mangaone Stream	Mangaone Stream - Milson Line to Manawatu confluence (S24:283 872)	LM
	Main Drain	Main Drain catchment to Manawatu confluence (including Taonui Stream) (S24:181 836)	LM
Oroua	Upper Oroua	Oroua River - source to Almadale (T23:365 113)	HM
	Middle Oroua	Oroua River - Almadale Awahuri Bridge (S23:243 002)	HM
	Lower Oroua	Oroua River - Awahuri Bridge to Manawatu confluence (S24:167 826)	LM
	Kiwitea	Kiwitea Stream - source to Oroua confluence (T23:309 066)	HM
	Makino	Makino Stream - source to Oroua confluence (S23:243 004)	LM
Coastal Manawatu	Coastal Manawatu	Manawatu River - Oroua confluence to mouth (S24:977 788)	LM
	Upper Tokomaru	Tokomaru River - source to Horseshoe Bend (S24:241 768)	UHS
	Lower Tokomaru	Tokomaru River - Horseshoe Bend to Manawatu confluence (S24:134 727)	LM
	Mangaore	Mangaore River - source to Manawatu confluence (S24:123 717)	HM
	Koputaroa	Koputaroa Stream - source to Manawatu confluence (S24:106 708)	LM
	Foxton Loop	Manawatu at SH1 to downstream limit of Whirikino Cut (S24:010 769)	LM
Upper Rangitikei	Upper Rangitikei	Rangitikei River - source to Makahikatoa Stream (U21:726 888)	UHS
Middle Rangitikei	Middle Rangitikei	Rangitikei River - Makahikatoa Stream to Pukeokahu (U21:713 708)	UHS
	Pukeokahu - Mangaweka	Rangitikei main stem – Pukeokahu to Mangaweka (T22:504 513)	HM
	Upper Moawhango	Moawhango River - source to Moawhango Dam (T20:469 960)	UVA
	Middle Moawhango	Moawhango Dam to Moawhango Township (T21:557 745)	UVM

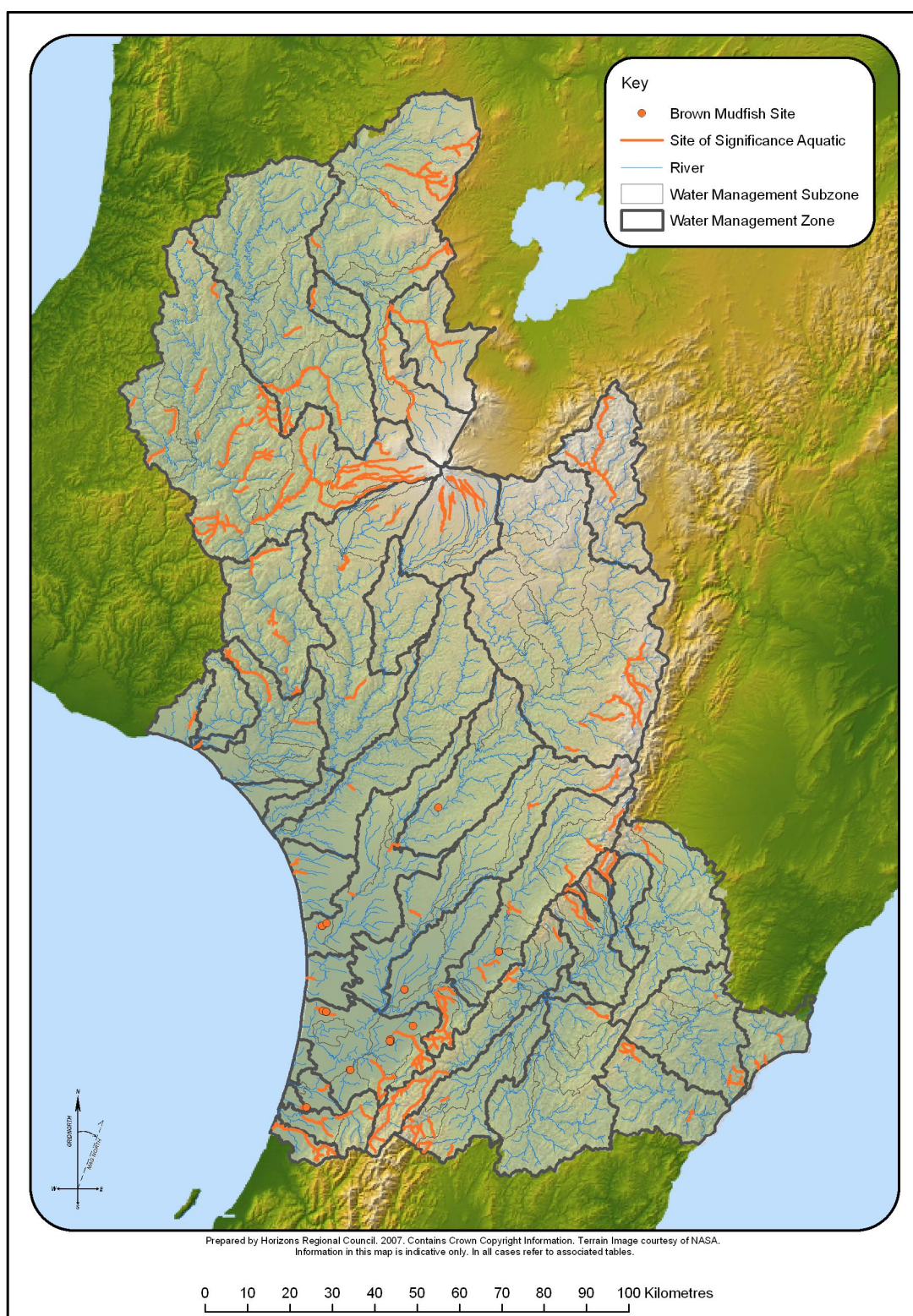
Management Zone	Sub zone	Description*	Life Supporting Capacity Classification
	Lower Moawhango	Moawhango Township to Rangitikei confluence (T21:609 623)	HSS
	Upper Hautapu	Hautapu River - source to Taihape (T21:506 670)	UVM
	Lower Hautapu	Hautapu River - Taihape to Rangitikei confluence (T22:529 574)	HSS
Lower Rangitikei	Lower Rangitikei	Rangitikei River - Mangaweka to Onepuhi (S23: 201 222)	HM
	Makohine	Makohine Stream - source to Rangitikei confluence (T22:400 443)	HSS
Coastal Rangitikei	Coastal Rangitikei	Rangitikei - Onepuhi to McKelvies (S24:033 985)	HM
	Tidal Rangitikei	Rangitikei - McKelvies to mouth (S24:991 984)	LM
	Porewa	Porewa Stream - source to Rangitikei confluence (S23:190 212)	HSS
	Tutaenui	Tutaenui Stream - source to Rangitikei confluence (S23:101 095)	LM
Upper Whanganui	Upper Whanganui	Whanganui River - source to Whakapapa confluence (S19: 189 499)	UVA
Cherry Grove	Cherry Grove	Whanganui River - Whakapapa confluence to Cherry Grove (S18:057 545)	UVM
	Upper Whakapapa	Whakapapa River - source to Footbridge (S19: 226 293)	UVA
	Lower Whakapapa	Whakapapa River - Footbridge to Whanganui confluence (S19: 189 499)	UVA
	Piopiotea	Piopiotea Stream - source to Whakapapa confluence (S19:174 356)	UVA
	Pungapunga	Pungapunga River - source to Whanganui confluence (S18:124 546)	UVM
	Upper Ongarue	Ongarue River - source to Waihuka Stream confluence (S18:108 785)	UVA
	Lower Ongarue	Ongarue River - Waihuka Stream to Whanganui confluence (S18:056 547)	UVM
Te Maire	Te Maire	Whanganui River - Cherry Grove to Te Maire (S19: 998 490)	UVM
Middle Whanganui	Middle Whanganui	Whanganui River - Te Maire to Retaruke confluence (Wades Landing/Whakahoro) (R19: 886 306)	UVM
	Upper Ohura	Ohura River - source to Tokorima (R18: 863 521)	HSS
	Lower Ohura	Ohura River - Tokorima to Whanganui confluence (R19:887 386)	HSS
	Retaruke	Retaruke River - source to Whanganui confluence (R19:890 309)	UVM
Pipiriki	Pipiriki	Whanganui River - Retaruke confluence to Pipiriki (R21: 859 897)	HSS
	Tangarakau	Tangarakau River - source to Whanganui confluence (R20:714 175)	HSS
	Whangamomona	Whangamomona River - source to Whanganui confluence (R20:731 130)	HSS
	Upper Manganui o te Ao	Manganui o te Ao River - source to Hoihenga Road (S20:047 077)	UVA
	Lower Manganui o te Ao	Manganui o te Ao - Hoihenga Road to Whanganui confluence (R20:861 979)	UVM
Paetawa	Paetawa	Whanganui River - Pipiriki to Paetawa (S22: 937 566)	HSS
Lower Whanganui	Lower Whanganui	Whanganui River - Paetawa to Aramoho Bridge (R22:858 420)	HSS



Management Zone	Sub zone	Description*	Life Supporting Capacity Classification
	Coastal Whanganui	Whanganui River - Aramoho Bridge to mouth (R22:797 328)	LM
	Upokongaro	Upokongaro River - source to Whanganui confluence (S22:908 463)	HSS
	Matarawa	Matarawa River - source to Whanganui confluence (R22:857 403)	HSS
Upper Whangaehu	Upper Whangaehu	Whangaehu - source to Karioi (S21: 218 864)	UVA
	Waitangi	Waitangi Stream – source to Whangaehu confluence (T21:316 888)	UVM
	Tokiahuru	Tokiahuru Stream - source to Whangaehu confluence (S21:219 865)	UVA
Middle Whangaehu	Middle Whangaehu	Whangaehu River - Karioi to Aranui (S21: 175 627)	HSS
Lower Whangaehu	Lower Whangaehu	Whangaehu River - Aranui to Kauangaroa (S22:045 397) (includes Mangawhero from Raupiu Road to Whangaehu confluence)	HSS
	Upper Makotuku	Makotuku River - source to Water supply weir (S20: 103 011)	UVA
	Lower Makotuku	Makotuku River - Water supply weir to Mangawhero confluence (S20:080 903)	UVA
	Upper Mangawhero	Mangawhero River - source to Makotuku confluence(S20:080 903)	UVA
	Lower Mangawhero	Mangawhero River - Makotuku confluence to Raupiu Road (S21:099 646)	HSS
Coastal Whangaehu	Coastal Whangaehu	Whangaehu River - Kauangaroa to mouth (R23:890 275)	HSS
Turakina	Upper Turakina	Turakina River - source to Otairi (S22: 236 471)	HSS
	Lower Turakina	Turakina River - Otaire to mouth (S23:924 231)	HSS
	Ratana	Lakes Waipu and Oraekomiko and all surrounding catchment area	LM
Ohau	Upper Ohau	Ohau River - source to Rongomatane (S25:072 577)	UHS
	Lower Ohau	Ohau River - Rongomatane to mouth (S25:918 578)	HM
Owahanga	Owahanga	Owahanga River - source to mouth (U25:932 532)	HSS
East Coast	East Coast	Wainui, Tautane and Waimata – whole catchments from source to mouth	HSS
Akitio	Upper Akitio	Akitio River - source to Weber Road (U24: 919 832)	HSS
	Lower Akitio	Akitio River - Weber Road to mouth (U25:992 610)	HSS
	Waihi	Waihi Stream - source to Akitio confluence (U24:895 801)	HSS
Northern Coastal	Northern Coastal	All coastal catchments and dune lakes between Kai Iwi and Waitotara catchments	LM
Kai Iwi	Kai Iwi	Kai Iwi Stream - source to mouth (R23:723 449)	HSS
Mowhanau	Mowhanau	Mowhanau Stream - source to mouth (R22:725 447)	LM
Kaitoke Lakes	Kaitoke Lakes	Lakes Kaitoke, Pauri, Wiritoa, Kohata and all surrounding catchment area	LM
Southern Wanganui Lakes	Southern Wanganui Lakes	Lakes Vipan, Heaton, Bernard, William, Herbert, Hickson, Alice, Koitiata, Dudding and all surrounding catchment area	LS

Management Zone	Sub zone	Description*	Life Supporting Capacity Classification
<b>Northern Manawatu Lakes</b>	Northern Manawatu Lakes	All lakes and lagoons between Coastal Rangitikei and Coastal Manawatu and all surrounding catchment area	LS
<b>Waitarere</b>	Waitarere	All lakes and lagoons between Coastal Manawatu and Lake Horowhenua catchment and all surrounding catchment area	LS
<b>Lake Papaitonga</b>	Lake Papaitonga	Lake Papaitonga catchment	LS
<b>Waikawa</b>	Waikawa	Waikawa Stream - source to mouth (S25:908 548)	HM
<b>Lake Horowhenua</b>	Lake Horowhenua	Whole lake catchment above Hokio Stream outlet	LM
	Hokio	Hokio Stream downstream of Lake Horowhenua outlet	LS





**Map D:11** Aquatic Sites of Significance in the Manawatu-Wanganui Region

**Table D.5:** Aquatic Sites of Significance in the Manawatu-Wanganui Region

Management Zone	Sub-zone	Site	Species	Map Ref
<b>Upper Manawatu</b>	Upper Manawatu	Manawatu River and Tributaries	Koaro and Dwarf galaxid	From the confluence with the Manawatu River at approx NZMS 260 U23:780-258 to source
	Mangatewainui	Mangatewainui River	Dwarf galaxid	From NZMS 260 U23:828-177 to U23:785-231
<b>Upper Tamaki</b>	Upper Tamaki	Tamaki River including East and West Branches	Dwarf galaxid	From approx NZMS 260 U23:710-131 to source
<b>Upper Kumeti</b>	Upper Kumeti	Kumeti/Mangapuaka Stream	Dwarf galaxid	From approx NZMS 260 T23:646-091 to source
<b>Tamaki-Hopelands</b>	Lower Tamaki	Rokaiwhana Stream	Dwarf galaxid	From the confluence with the Tamaki River at approx NZMS 260 T23:697-091 to source
	Oruakeretaki	Mangapukakakahu Stream	Dwarf galaxid	From the confluence with the Oruakeretaki River at approx NZMS 260 T23:666-023 to source
		Oruakeretaki Stream	Dwarf galaxid	From approx NZMS 260 T23:642-045 to T23:618-067
		Oruakeretaki Tributary	Dwarf galaxid	From the confluence with the Oruakeretaki Stream at approx NZMS 260 T23:628-058 to source
<b>Tiraumea</b>	Lower Tiraumea	Makairo Stream	Shortjaw kokopu and Koaro	From approx NZMS 260 T24:655-833 to source
<b>Mangatainoka</b>	Upper Mangatainoka	Mangatainoka Tributary	Shortjaw kokopu and Koaro	From the confluence with the Mangatainoka River at approx NZMS 260 S25:249-535 to source
		Ngamaia Stream Tributary	Koaro	From the confluence with the Ngamaia Stream at approx NZMS 260 S25:243-568 to source
		Mangatainoka River	Shortjaw kokopu and Koaro	From approx NZMS 260 S25:262-562 to source
		Mangatainoka Tributary	Shortjaw kokopu	From the confluence with the Mangatainoka River at NZMS 260 S25:252-555 to source
		Rawnsley Stream	Shortjaw kokopu	From the confluence with the Mangatainoka River at approx NZMS 260 S25:259-555 to source
		Makotukutuku Stream	Shortjaw kokopu	From Confluence with the Mangatainoka River at approx NZMS 260 S25:279-576 to source
	Middle Mangatainoka	Tramway Creek	Dwarf galaxid	From the confluence with the Mangatainoka River at approx NZMS 260 T25:326-625 to source
	Makakahi	Bruce Stream Tributary	Shortjaw Kokopu	From Confluence with the Bruce Stream at approx NZMS 260 T25:332-510 to source
		Makakahi River Tributary	Shortjaw Kokopu	From the confluence with the Makakahi River from approx NZMS 260 S25:286-514 to source
		Makakahi River	Shortjaw Kokopu	From the confluence with a tributary at approx NZMS 260 S25:286-514 to source



Management Zone	Sub-zone	Site	Species	Map Ref
Upper Gorge	Upper Gorge	Manawatu River Tributary	Redfin Bully	From the confluence with the Manawatu River at approx NZMS 260 T24:486-899 to source
		Manawatu River Tributary	Redfin Bully	From the confluence with the Manawatu River at approx NZMS 260 T24:490-928 to source
	Mangaatua	Mangaatua Stream	Shortjaw Kokopu	From approx NZMS 260 T24:590-992 To approx NZMS 260 T23:574-023
	Lower Mangahao	Mangahao Tributary	Dwarf galaxid	From the confluence with the Mangahao River at approx NZMS260 S25:150-532 to source
		Mangahao River	Dwarf galaxid and Shortjaw Kokopu	From approx NZMS 260 T25:324-679 To source
		Roaring Creek	Dwarf galaxid	From the confluence with the Mangahao River at approx NZMS 260 S25:190-606 to source
		Ngapuketurua Stream	Banded kokopu and Shortjaw kokopu	From the confluence with the Mangahao River at approx NZMS 260 S25:278-660 to source
Middle Manawatu	Middle Manawatu	Manawatu River Tributary	Lamprey	From the confluence with the Manawatu River at approx NZMS 260 T24:410-937 to T24:444-940
		Manawatu River Tributary	Lamprey	From the confluence with the Manawatu River at approx NZMS 260 T24:392-929 to T24:413-902
	Upper Pohangina	Pohangina Tributary	Koaro	From the confluence with the Pohangina River at approx NZMS 260 T23:652-233 to source
		Pohangina River	Whio	From NZMS 260 U23:705-256 to approx NZMS 260 U23:708-303
		Makawakawa Stream Tributary	Koaro	From approx NZMS 260 T23:606-173 to source
	Middle Pohangina	Pohangina River	Koaro	From approx NZMS 260 T23:468-058 to NZMS 260 T23:469-086
		Waitokanui Stream	Redfin Bully	From the confluence with the Pohangina River at approx NZMS 260 T23:474-069 to source
	Lower Pohangina	Ashhurst Domain	Brown Mudfish	At approx NZMS 260 T24:446-967 to NZMS 260 T24:444-940
Lower Manawatu	Turitea	Tiritea Stream	Lamprey	From the confluence with the Manawatu River at approx NZMS 260 T24:302-880 to approx NZMS 260 T24:341-866
	Kahuterawa	Kahuterawa Stream and Tributaries	Banded Kokopu, Shortjaw Kokopu and Redfin Bully	From the confluence with the Manawatu River at approx NZMS 260 S24:293-870 to source
	Main Drain	Unnamed Wetland	Brown Mudfish	At approx NZMS 260 S24:223-877
Oroua	Upper Oroua	Mangapikopiko Stream	Banded Kokopu	From the confluence with the Oroua River at NZMS 260 T22:515-307 to approx T22:538-317
		Oroua River	Banded Kokopu	From approx NZMS 260 T22:667-349 to source
	Makino	Mangaone West Stream	Redfin Bully	From approx NZMS 260 S23:258-050 to approx NMZS 260 S23:236-064

Management Zone	Sub-zone	Site	Species	Map Ref
<b>Coastal Manawatu</b>	Coastal Manawatu	Round Bush Scenic Reserve and tributary	Brown Mudfish	From approx NZMS 260 S24:013-835 to source at approx S24:058-819
	Upper Tokomaru	Tokomaru River Tributary	Redfin Bully, Koaro and Banded Kokopu	From the confluence with the Tokomaru River at approx NZMS 260 S24:243-705 to source
		Tokomaru River Tributary	Redfin Bully, Koaro and Banded Kokopu	From the confluence with the Tokomaru River at approx NZMS 260 S24:255-720 to source
		Tokomaru River Tributary	Redfin Bully, Koaro and Banded Kokopu	From the confluence with the Tokomaru River at approx NZMS 260 S24:259-734 to source
	Upper and Lower Tokomaru	Tokomaru River	Redfin Bully Koaro and Banded Kokopu	From approx NZMS 260 S24:198-776 To approx S25:240-698
	Lower Tokomaru	Makuera Swamp Wildlife Management Reserve	Brown Mudfish	At approx NZMS 260 S24:190-760
	Mangaore	Mangaore Stream	Shortjaw Kokopu, Redfin Bully and Koaro	From approx NZMS 260 S24:142-711 to source at approx S24:177-635
		Mangatangi Stream	Shortjaw Kokopu, Redfin Bully and Koaro	From the confluence with the Mangaore Stream at approx NZMS 260 S25:173-670 to source
		Mangaore Stream Tributary	Koaro	From the confluence with the Mangaore Stream at approx NZMS 260 S25:161-648 To source
	Koputaroa	Perawitis Wetland	Brown Mudfish	At approx NZMS 260 S25:094-688 and S25:095-688
<b>Upper Rangitikei</b>	Upper Rangitikei	Rangitikei River	Whio	From approx NZMS 260 U20:707-031 to approx NZMS 260 U19:716-274
		Mangamare River	Whio	From the confluence with the Rangitikei River at approx NZMS 260 T20:691-090 to approx NZMS 260 T20:699-102
		Otamatenui Stream	Whio	From the confluence with the Rangitikei River at approx NZMS 260 T20:672-107 to approx NZMS 260 T20:603-146
<b>Middle Rangitikei</b>	Pukeokahu - Mangaweka	Mangatera River	Whio	From the confluence with the Maropea River at approx NZMS 260 U21:749-655 to Lake Colenso at approx U21:781-660
		Waiokotore Stream	Whio	From the confluence with the Mangatera River at approx NZMS 260 U21:770-659 to U21: 789-697
		Maropea River	Whio	From the confluence with the Mangatera River at approx NZMS 260 U21:749-655 to U22:803-580
		Kawhatau River	Whio	From the confluence with Hikurangi Stream at approx NZMS 260 U22:700-557 to approx U22:760-499
		Waikakamaka River	Whio	From the confluence with the Maropea River at approx NZMS 260 U21:748-622 to approx U22:782-502

Management Zone	Sub-zone	Site	Species	Map Ref
		Porangaki River	Dwarf galaxid and Redfin Bully	From the confluence with the Mangakukeke Stream at approx NZMS 260 T22:635-507 to approx T22:651-499
		Hikurangi Stream	Dwarf galaxid	From the confluence with the Kawhatau River at approx NZMS 260 T22:661-530 to source
		Mangawharariki River	Shortjaw Kokopu	From approx NZMS 260 T22:602-449 to approx NZMS 260 T22:632-444
<b>Lower Rangitikei and Coastal Rangitikei</b>	Lower Rangitikei and Coastal Rangitikei	Rangitikei River	Redfin Bully	From approx NZMS 260 S23:184-206 to approx S23:210-222
<b>Coastal Rangitikei</b>	Tutaenui	Tutaenui Stream Tributary	Brown Mudfish	From the confluence with the Tutaenui Stream at approx NZMS 260 S23:104-104 to source
	Coastal Rangitikei	Forest Road Wetland	Giant Kokopu	From approx NZMS 260 S23:016-028 to approx S23:040-034
<b>Upper Whanganui</b>	Upper Whanganui	Mangatepopo Stream	Whio	From the confluence with the Whanganui River at approx NZMS 260 S19:289-405 to T19:308-360
<b>Upper Whanganui and Cherry Grove</b>	Upper Whanganui and Cherry Grove	Whanganui River	Whio	From the confluence with the Whakapapa River at approx NZMS 260 S19:188-495 to source
<b>Cherry Grove</b>	Upper and Lower Whakapapa	Whakapapa River and Whakapapiti Stream	Whio	From the confluence with the Whanganui river at approx NZMS 260 S19:188-495 to approx S19:237-224 (SH47 Bridge)
	Pungapunga	Pungapunga River	Whio	From approx NZMS 260 S18:291-612 to source
		Pungapunga River	Koaro	From approx NZMS 260 S18:234-573 to source
	Upper Ongarue	Ongarue River and tributaries	Whio	From NZMS 260 T17:314-864 to source
		Mangatukutuku Stream	Whio	NZMS 260 S18:166-770 to S18:204-729
		Maramataha River	Whio	From NZMS 260 S17:176-825 to source
		Piropiro Stream	Whio	From the confluence with the Maramataha River at approx NZMS 260 S17:251-804 to source
		Paupangonui Stream	Whio	From the confluence with the Piropiro River at approx NZMS 260 S17:265-819 to source
		Totara Stream	Whio	From the confluence with the Maramataha River at approx NZMS 260 S18:271-796 to source
		Unnamed Maramataha River Tributary	Whio	From the confluence with the Maramataha River at approx NZMS 260 S18:273-793 to source
	Lower Ongarue	Opotiki Stream	Shortjaw Kokopu	From approx NZMS 260 S18:022-633 To source



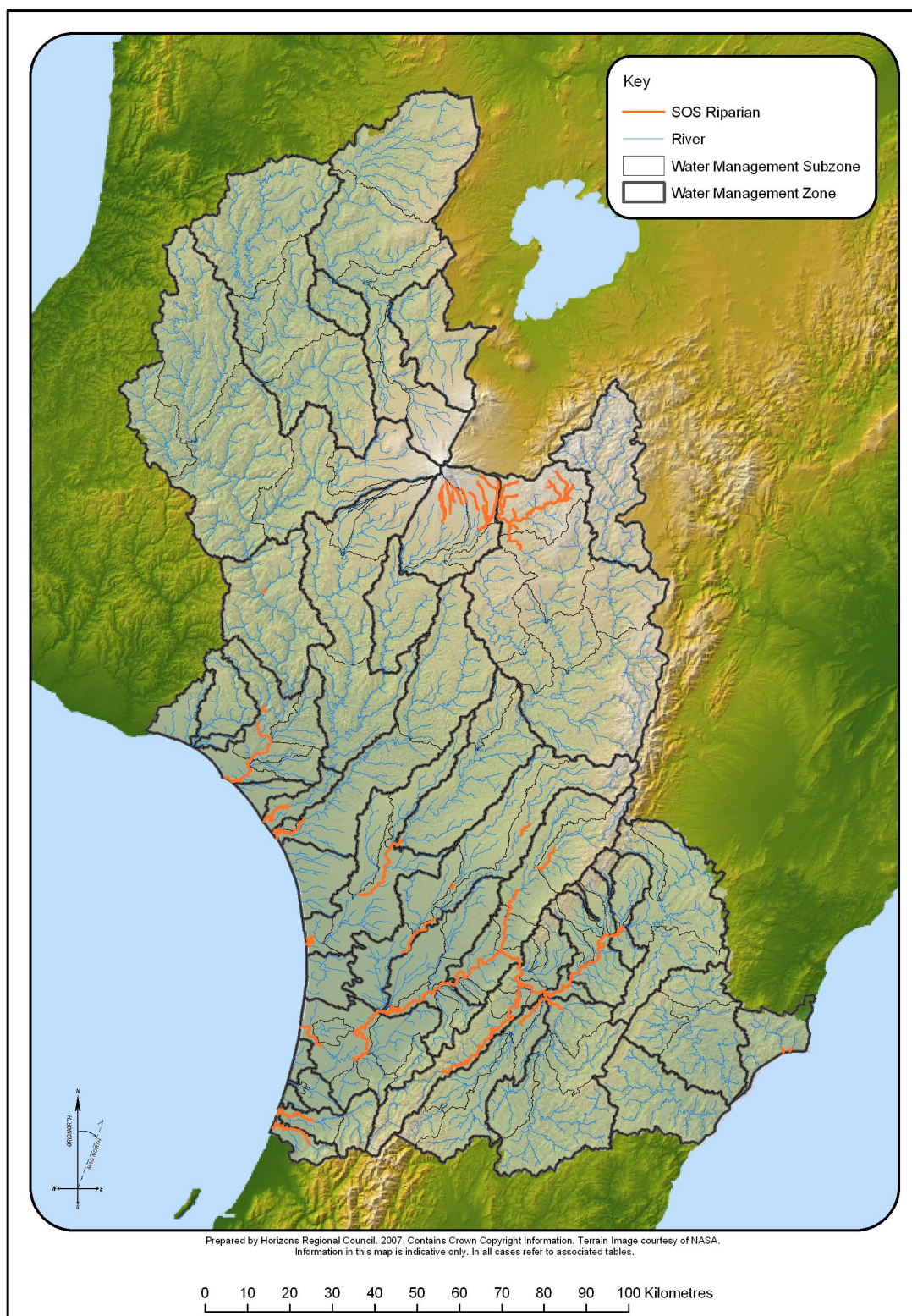
Management Zone	Sub-zone	Site	Species	Map Ref
Te Maire	Te Maire	Motutara stream	Shortjaw Kokopu	From the confluence with Whanganui River at approx NZMS 260 S19:000-488 to source
Middle Whanganui	Middle Whanganui	Whanganui River Tributary	Shortjaw Kokopu	From the confluence with the Whanganui River at approx NZMS 260 S19:939-422 to source
	Retaruke	Retaruke River	Whio	From the confluence with the Whanganui River from approx NZMS 260 R19:890-309 to approx NZMS 260 S19:072-213
		Horomea Stream	Whio	From approx NZMS 260 S19:947-252 to source
		Morinui Stream	Whio	From approx NZMS 260 S19:954-233 to source
Pipiriki	Pipiriki	Mangapurua Stream and tributaries	Whio	From approx NZMS 260 R20:800-117 to source
		Mangatiti Stream and tributaries	Whio	From approx NZMS 260 R20:832-079 to source
		Kaiwhakauka Stream	Whio	From approx NZMS 260 R19:878-305 to source
		Puketapu Stream	Redfin Bully	From the confluence with the Whanganui River at approx NZMS 260 R20:737-180 to source
		Whanganui River Tributary	Redfin Bully	From the confluence with the Whanganui River at approx NZMS 260 R20:793-115 to source
		Puawaw Stream	Redfin Bully	From the confluence with the Whanganui River at approx NZMS 260 R20:819-058 to source
		Mangaio Stream and tributaries	Whio and Redfin Bully	From the confluence with the Whanganui River at approx NZMS 260 R20:839-955 to source
	Tangarakau	Waitaanga Stream Tributary	Redfin Bully	From the confluence with the Waitaanga Stream at approx R18:710-645 to source
		Heao Stream	Shortjaw Kokopu and Koaro	From approx NZMS 260 R18:781-513 To source
		Mangarae Stream	Banded Kokopu	From the confluence with the Mangarae Stream at approx NZMS 260 R19:732-302 to source
		Mangarae Stream Tributary	Banded Kokopu	From approx NZMS 260 R19:728-288 to source
	Whangamomona	Tirohanga Stream	Shortjaw Kokopu	From the confluence with the Whangamomona River at approx NZMS 260 R20:658-157 to source
		Awahou Stream	Shortjaw Kokopu	From the confluence with the Marangae Stream at approx NZMS 260 R19:587-277 to source
		Kuri Stream	Shortjaw Kokopu	From approx NZMS 260 R20:666-190 to source
	Upper Manganui o te Ao	Mangaturuturu River and tributaries	Banded Kokopu and Whio	From the confluence with the Manganui o te Ao at approx NZMS 260 S20:056-067 to source

Management Zone	Sub-zone	Site	Species	Map Ref
		Mangaturuturu River Tributary	Koaro	From the confluence with The Mangaturuturu River at approx NZMS 260 S20:161-083 to source
		Manganui o te Ao River Tributary	Whio	From the confluence with the Manganui o te Ao River at approx NZMS 260 S20:068-099 to source
		Manganui o te Ao River	Koaro	From approx NZMS 260 S20:067-085 to source
		Makomiko Stream	Koaro	From the confluence with the Waimarino Stream at approx NZMS 260 S20:153-168 to source
		Makatote River	Koaro and Whio	From the confluence with the Manganui o te Ao River at approx NZMS 260 S20:128-119 to source
	Upper and Lower Manganui o te Ao	Manganui o te Ao River	Whio	From approx NZMS 260 R20:861-980 to source
	Lower Manganui o te Ao	Orautoha	Whio	From the confluence with Manganui o te Ao at approx NZMS 260 S20:027-067 to source
		Ruatiti Stream	Whio and Shortjaw Kokopu	From the confluence with Manganui o te Ao at approx NZMS 260 S20:993-080 to source
		Makino Stream Tributary	Shortjaw Kokopu and Koaro	From approx NZMS 260 S20:011-130 to source
		Ohangaia Stream	Redfin Bully	From the confluence with the Manganui o te Ao River at approx NZMS 260 S20:919-021 to source
<b>Paetawa</b>	Paetawa	Kaukore Stream	Shortjaw Kokopu, Redfin Bully, Koaro	From the confluence with the Whanganui River at approx NZMS 260 R21:859-894 to source
		Whanganui River	Redfin Bully	From approx NZMS 260 R21:861-858 to approx NZMS 260 R21:861-892
		Riripo Stream	Redfin Bully	From the confluence with the Whanganui River at approx NZMS 260 S21:915-777 to source
		Otuporiki Stream	Redfin Bully	From the confluence with the Whanganui River at approx NZMS 260 S21:950-696 to source
		Taupiri Stream	Redfin Bully	From the confluence with the Whanganui River at approx NZMS 260 S21:942-624 to source
		Whauteihi Stream	Bluegill Bully	From the confluence with Whanganui river at approx NZMS 260 S22:959-577 to source
<b>Lower Whanganui</b>	Lower Whanganui	Kauarapaoa Stream	Redfin Bully	From approx NZMS 260 S22:900-558 to source
	Upokongaro	Mongotai stream	Lamprey	From the confluence with the Upokongaro Stream at approx NZMS 260 S22:958-511 to source
<b>Upper Whangaehu</b>	Upper Whangaehu	Unnamed tributary of the Whangaehu River	Whio	From approx NZMS 260 T20:410-019 to source

Management Zone	Sub-zone	Site	Species	Map Ref
		Makahikatoa Stream and tributaries	Whio	From approx NZMS 260 T20:396-008 to source
		Wahianoa Stream	Whio	From approx NZMS 260 T20:365-039 to source
	Tokiahuru	Unnamed tributary of the Tokiahuru stream	Whio	From approx NZMS 260 T20:341-027 to source
		Unnamed tributary of the Unuunuakapuataeriki stream	Whio	From approx NZMS 260 T20:329-989 to source
		Unuunuakapuataeriki stream and tributaries	Whio	From approx NZMS 260 T20:312-960 to source
Lower Whangaehu	Lower Whangaehu	Taukoro Stream	Koaro	From the confluence with the Mangawhero River at approx NZMS 260 S22:083-566 to source
	Upper Mangawhero	Mangawhero River	Whio	From approx NZMS 260 S20:179-978 (Ohakune) to source
		Taonui Stream	Whio	From approx NZMS 260 S20:135-009 to S20:160-021
	Lower Mangawhero	Mangawhero River	Whio	From approx NZMS 260 S21:067-875 to S20:080-903
Turakina	Upper Turakina	Turakina River Tributary	Redfin Bully	From the confluence with the Turakina River at approx NZMS 260 S22:090-361 to approx S22:104-350
Ohau	Upper Ohau	Waiti Stream	Redfin Bully	From the confluence with the Ohau River at approx NZMS 260 S25:118-604 to source
	Upper and Lower Ohau	Ohau River	Redfin Bully, Bluegill Bully and Banded Kokopu	From approx NZMS 260 S25:061-575 to approx NZMS 260 S25:098-588
	Lower Ohau	Ohau River	Redfin Bully	From approx S25:982-578 to approx S25:039-574
		Makorokio Stream	Redfin Bully, Lamprey and Shortjaw Kokopu	From the confluence with the Ohau River at approx NZMS 260 S25:018-563 to source
Owahanga	Owahanga	Owahanga River	Redfin Bully	From approx NZMS 260 U25:902-585 to approx NZMS 260 U25:889-568
		Pongaroa River	Redfin Bully and Shortjaw Kokopu	From approx NZMS 260 U24:778-708 to source
East Coast	East Coast	Waimata River	Redfin Bully	From River Mouth at approx NZMS 260 U25:058-691 to approx NZMS 260 U24:051-710
		Papuka Stream	Redfin Bully	From River Mouth at approx NZMS 260 U24:076-705 to approx NZMS 260 U24:072-723
		Wainui River	Redfin Bully	From approx NZMS 260 V24:112-752 to approx NZMS 260 V24:102-771
Akitio	Upper Akitio	Akitio River Tributary	Banded Kokopu	From the confluence with the Akitio River at approx NZMS 260 U24:955-866 to source
	Lower Akitio	Middle Creek	Redfin Bully and Banded Kokopu	From the confluence with the Akitio River at approx NZMS 260 U25:986-654 to source



Management Zone	Sub-zone	Site	Species	Map Ref
		Wakawaihine Stream	Redfin Bully	From the confluence with the Akitio River at approx NZMS 260 U25:985-657 to approx NZMS 260 U25:990-677
		Wakawaihine Stream Tributary	Redfin Bully	From approx NZMS 260 U25:998-696 to source
<b>Northern Coastal</b>	Northern Coastal	Okehu Stream	Redfin Bully	From approx NZMS 260 R22:713-495 to approx R22:731-531
<b>Mowhanau</b>	Mowhanau	Mowhanau Stream	Redfin Bully	From River Mouth at approx NZMS 260 R22:726-448 to approx R22:743-462
<b>Southern Wanganui Lakes</b>	Southern Wanganui Lakes	Unnamed Stream Santoft Forest	Banded Kokopu	From River mouth at approx NZMS 260 S23:954-173 to Lake Koitiata at approx S23:973-185
		Waimahora Stream	Banded Kokopu	From River Mouth at approx NZMS 260 S23:961-153 to approx S23:989-154
<b>Northern Manawatu Lakes</b>	Northern Manawatu Lakes	Kaikokopu Stream	Redfin Bully	From River Mouth at approx NZMS 260 S24:992-905 to approx S24:009-902
<b>Lake Papaitonga</b>	Lake Papaitonga	Lake Papaitonga	Brown Mudfish	Lake Papaitonga Wetland at approx NZMS 260 S25:991-600
		Lake Papaitonga and Tributaries	Banded Kokopu	From the confluence with Lake Papaitonga and Waiwiri stream at approx NZMS 260 S25:977-600 to source
<b>Waikawa</b>	Waikawa	Panatewaewae Stream	Koaro	From the confluence with the Waikawa Stream at approx NZMS 260 S25:017-498 to source
		Waikawa Stream	Shortjaw Kokopu and Redfin Bully	Waikawa Stream Mainstem from Mouth to source
<b>Lake Horowhenua</b>	Lake Horowhenua	Patiki Stream	Giant Kokopu	From the confluence with Lake Horowhenua at approx NZMS 260 S25:019-642 to source



**Map D:12** Riparian Sites of Significance in the Manawatu-Wanganui Region

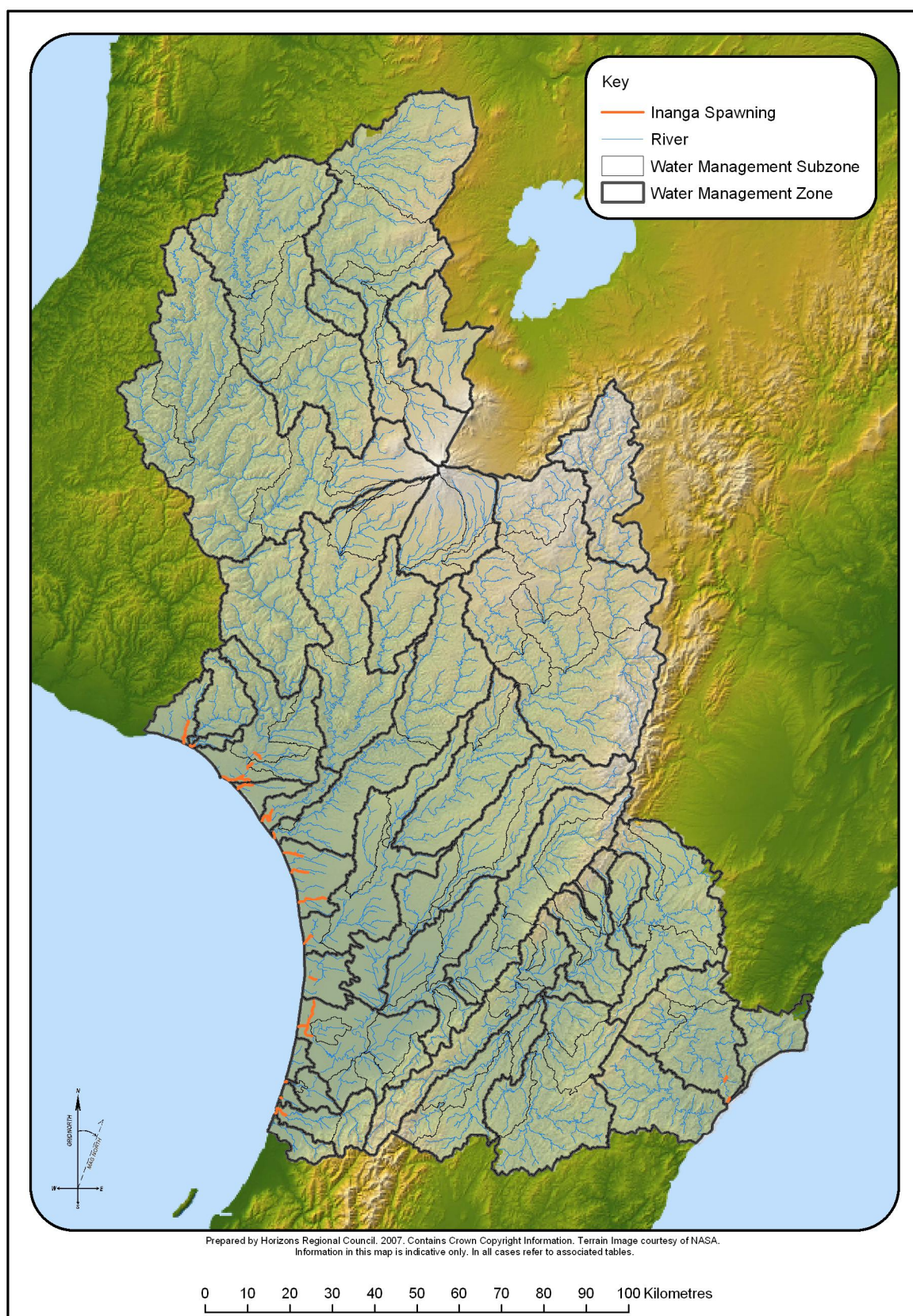
**Table D.6:** Riparian Sites of Significance in the Manawatu-Wanganui Region

Management Zone	Sub-zone	River	Description	Riparian Habitat Value
Manawatu Weber to Tamaki	Weber-Tamaki	Manawatu River	From approx NZMS 260 U23:708-003 To approx U23: 737-025 (confluence with Mangatera Stream)	Gravel and Sand (Dotterel)
Manawatu Tamaki to Hopelands	Tamaki-Hopelands	Manawatu River	From approx NZMS 260 T24:614-897 To approx U23:708-003	Gravel and Sand (Dotterel)
Hopelands to Tiraumea	Hopelands-Tiraumea	Manawatu River	From the confluence with the Tiraumea River at approx NZMS 260 T24:553-871 to approx T24:614-897	Gravel and Sand (Dotterel)
Tiraumea	Lower Tiraumea	Tiraumea River	From the confluence with the Manawatu River at approx NZMS 260 T24:553-871 to the confluence with the Makairo Stream at approx T24:597-831	Gravel and Sand (Dotterel)
Mangatainoka	Lower Mangatainoka	Mangatainoka River	From the confluence with the Tiraumea River at approx NZMS 260 T24:557-856 to approx T24:495-786.	Gravel and Sand (Dotterel)
Upper Gorge	Upper Gorge	Mangahao River	From the Manawatu Gorge at approx NZMS 260 T24:495-938 to the confluence with the Tiraumea River at approx NZMS 260 T24:553-871	Gravel and Sand (Dotterel)
	Upper Mangahao	Mangahao River	From approx NZMS 260 T24:469-826 to approx T25:309-684	Gravel and Sand (Dotterel)
	Lower Mangahao	Mangahao River	From the confluence with the Manawatu River at approx NZMS 260 T24:496-892 to approx T24:469-826	Gravel and Sand (Dotterel)
Middle Manawatu	Middle Manawatu	Manawatu River	From Teachers College at approx NZMS 260 T24:332-891 to the Manawatu Gorge at approx T24:495-938	Gravel and Sand (Dotterel)
	Upper Pohangina	Pohangina River	From approx NZMS 260 T23:534-168 to approx T23:577-213	Gravel and Sand (Dotterel)
	Middle Pohangina	Pohangina River	From approx NZMS 260 T23:464-043 to approx T23:493-113	Gravel and Sand (Dotterel)
	Lower Pohangina	Pohangina River	From the confluence with the Manawatu River at approx NZMS 260 T24:448-965 to approx T23:464-043	Gravel and Sand (Dotterel)
Lower Manawatu	Lower Manawatu	Manawatu River	From the confluence with the Oroua River at approx NZMS 260 S24:164-825 to Teachers College at approx T24:332-891	Gravel and Sand (Dotterel)
Oroua	Upper Oroua	Oroua River	From approx NZMS 260 T23:500-242 to approx T23:519-267	Gravel and Sand (Dotterel)
	Middle Oroua	Oroua River	From approx 200m upstream of SH3 bridge at approx NZMS 260 S23:243-005 to SH54 bridge at approx S23:293-044	Gravel and Sand (Dotterel)
	Lower Oroua	Oroua River	From approx 300m upstream of Kopane Bridge at approx NZMS 260 S24:218-965 to approx 200m upstream of SH3 bridge at approx S23:243-005	Gravel and Sand (Dotterel)
	Kiwitea	Kiwitea Stream	From approx NZMS 260 T23:332-116 to approx T23:339-127	Gravel and Sand (Dotterel)



Management Zone	Sub-zone	River	Description	Riparian Habitat Value
Coastal Manawatu	Coastal Manawatu	Manawatu River	From the River Mouth at approx NZMS 260 S24:977-787 to approx 100m downstream of the SH1 bridge at approx S24:027-744	Gravel and Sand (Dotterel) Mud/Silt habitat and estuarine roosts (Waders)
			From approx NZMS 260 S24:101-715 to the confluence with the Oroua River at approx S24:164-825	Gravel and Sand (Dotterel)
Middle Rangitikei	Upper Moawhango	Moawhango River and tributaries	From approx NZMS 260 T20:468-948 to source	Gravel and Sand (Dotterel)
	Middle Moawhango	Moawhango River	From approx NZMS 260 T20:495-916 to approx T20:468-948	Gravel and Sand (Dotterel)
Lower Rangitikei	Lower Rangitikei	Rangitikei River	From approx NZMS 260 S23:200-221 to approx S23:217-231	Gravel and Sand (Dotterel)
Coastal Rangitikei	Coastal Rangitikei	Rangitikei River	From approx NZMS 260 S23:111-104 to approx S23:200-221	Gravel and Sand (Dotterel)
	Tidal Rangitikei	Rangitikei River and Estuary	From the river mouth at approx NZMS 260 S24:990-983 to approx S23:010-001	Gravel and Sand (Dotterel)
Paetawa	Paetawa	Mangoihe Stream	From the confluence with the Whanganui River at approx NZMS 260 R21:889-813 to approx 1km upstream of Jerusalem at approx 894-818	Nankeen Night Heron roosts
Lower Whanganui	Lower Whanganui	Whanganui River	From the confluence of the Whanganui River and the Kauarapaoa Stream at approx NZMS 260 R22:886-537 to 1km upstream at approx R22:897-532	Nankeen Night Heron roosts
		Kauarapaoa Stream	From the confluence of the Whanganui River and the Kauarapaoa Stream at approx NZMS 260 R22:886-537 to 1km upstream at approx R22:891-544	Nankeen Night Heron roosts
		Whanganui River	From NZMS 260 R22:861-422 to R26:878-505 (near Kaiwhaiki)	Mud/Silt habitat and estuarine roosts (Waders)
	Coastal Whanganui	Whanganui River and Estuary	From the River Mouth at approx NZMS 260 R22:799-378 to SH3 Bridge at approx R22:861-422	Gravel and Sand (Dotterel) Mud/Silt habitat and estuarine roosts (Waders)
Upper Whangaehu	Upper Whangaehu	Whangaehu River and tributaries	Upstream from approx NZMS 260 T20:397-960 to source	Gravel and Sand (Dotterel)
		Makahikatoa Stream and tributaries	Upstream from approx NZMS 260 T20:396-008 to source	Gravel and Sand (Dotterel)
		Wahianoa Stream	Upstream from approx NZMS 260 T20:370-024 to source	Gravel and Sand (Dotterel)
	Tokiahuru	Unnamed tributary of the Tokiahuru stream	Upstream from approx NZMS 260 T20:359-022 to source	Gravel and Sand (Dotterel)
		Unnamed tributary of the Tokiahuru stream	Upstream from approx NZMS 260 T20:341-027 to source	Gravel and Sand (Dotterel)

Management Zone	Sub-zone	River	Description	Riparian Habitat Value
		Unnamed tributary of the Te Unuunuakapuataeariki stream	Upstream from approx NZMS 260 T20:329-999 to source	Gravel and Sand (Dotterel)
		Te Unuunuakapuataeariki stream and tributaries	Upstream from approx NZMS 260 T20:311-980 to source	Gravel and Sand (Dotterel)
Coastal Whangaeahu	Coastal Whangaeahu	Whangaeahu River	From the River Mouth at approx NZMS 260 R23:890–274 to the SH3 Bridge at approx S23: 949-311	Gravel and Sand (Dotterel) Mud/Silt habitat and estuarine roosts (Waders)
Turakina	Lower Turakina	Turakina River	From the River Mouth at approx NZMS 260 S23:921–234 to the SH3 Bridge at approx S23:985–279	Gravel and Sand (Dotterel) Mud/Silt habitat and estuarine roosts (Waders)
Ohau	Lower Ohau	Ohau River	From the River Mouth at approx NZMS 260 S25:922-582 to approx S25:007-569	Gravel and Sand (Dotterel) Mud/Silt habitat and estuarine roosts (Waders)
East Coast	East Coast	Wainui River	From approx NZMS 260 V24:117-727 to approx V24:113-738	Mud/Silt habitat and estuarine roosts (Waders)
		Tuatane Stream	From approx NZMS260 V24:132-730 to approx V24:136-737	Mud/Silt habitat and estuarine roosts (Waders)
Waikawa	Waikawa	Waikawa Stream	From NZMS S25:910-551 (river mouth) to S25:000-511	Gravel and Sand (Dotterel) Mud/Silt habitat and estuarine roosts (Waders)



**Map D:13** Native Fish Spawning Value in the Manawatu-Wanganui Region