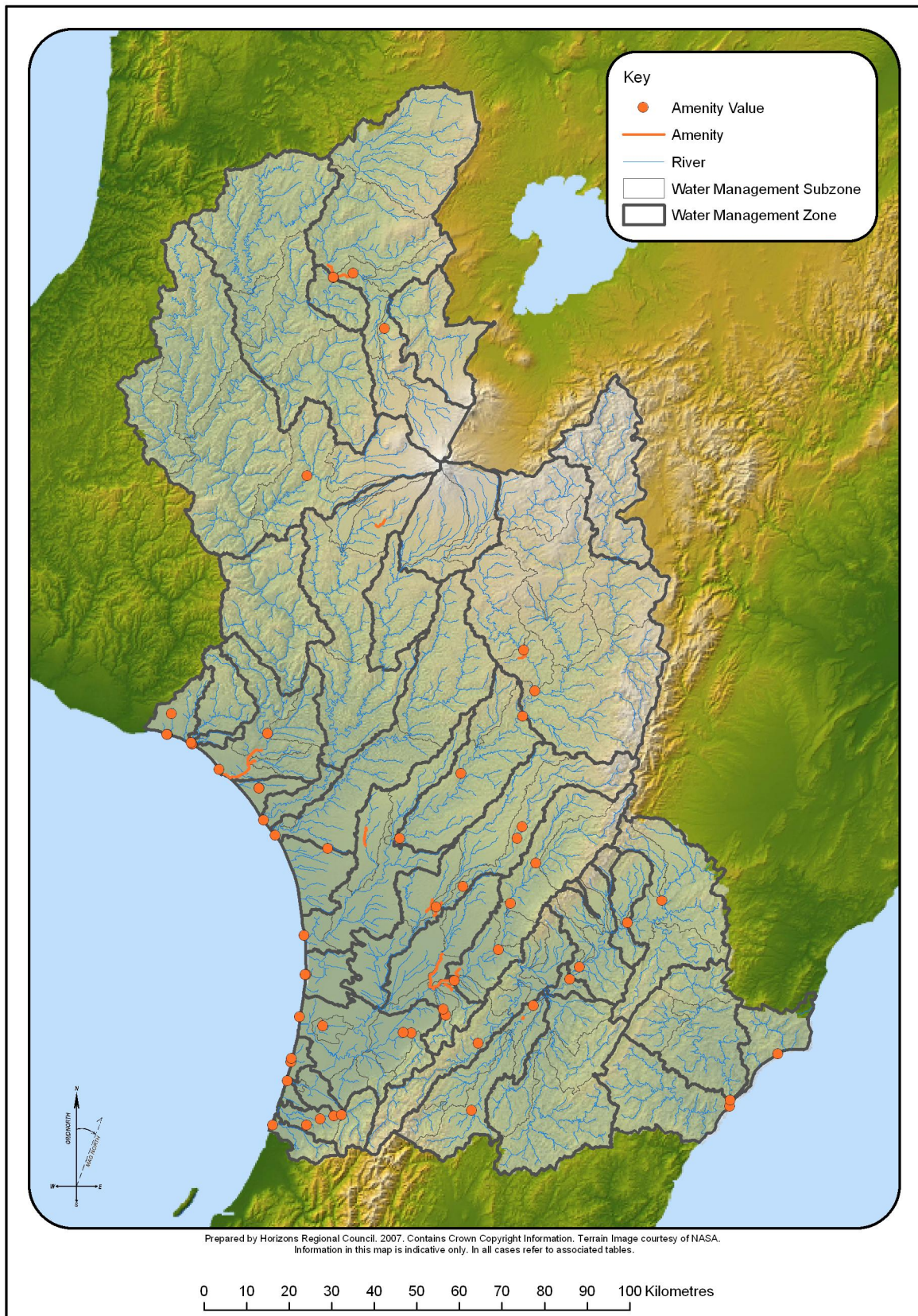


**Table D.7:** Native Fish Spawning Value in the Manawatu-Wanganui Region

Management Zone	Sub-zone	River/Stream Name	Reference
Coastal Manawatu	Coastal Manawatu	Manawatu River	From the river mouth to a point 100 metres upstream of the CMA boundary located at the seaward edge of Foxton Loop at approx NZMS 260 S24:010-765
		Whitebait Creek	From confluence with the Manawatu River from approx NZMS 260 S24:982-791 to Source
Coastal Rangitikei	Tidal Rangitikei	Rangitikei River	From the river mouth to a point 100 metres upstream of the CMA boundary located at the seaward edge of the boat ramp on the true left bank of the river located at approx NZMS 260 S24:009-000
Lower Whanganui	Lower Whanganui	Mateongaonga Stream	From confluence with Whanganui River at approx NZMS 260 R22:873-434 to Kaimatira Road at approx R22:889-422
	Coastal Whanganui	Whanganui River	From the river mouth to a point approx 100 metres upstream of the CMA boundary located at the seaward edge of the Cobham Street Bridge at approx NZMS 260 R22:848-381
		Stream opposite Corliss Island	From confluence with Whanganui River at approx NZMS 260 R22:836-374 to State Highway 3 at approx R22:862-370
		Omapu Stream	From the stream mouth to a point 1km upstream at approx NZMS 260 R22: 750-441
Matarawa	Matarawa Stream	From confluence with Whanganui River at approx NZMS 260 R22:858-398 to Ikitara Street at approx R22:869-409	
Coastal Whangaehu	Coastal Whangaehu	Whangaehu River	From the river mouth to approx NZMS 260 S22:915-300
Turakina	Lower Turakina	Turakina River	From the river mouth to a point located at the continuation of the fence line at approx NZMS 260 S23:918-246
Ohau	Lower Ohau	Ohau River	From the river mouth to a point 5km upstream at NZMS 260 S25:948-579
		Lake Waitaha Drain	From the confluence with the Ohau River at approx NZMS 260 S25:946-580 to the Lake Waitaha Outlet at approx S25:954-605
Akitio	Lower Akitio	Akitio River	From the river mouth to a point 100 metres upstream of the CMA boundary located at the seaward edge of the bridge that crosses the river at NZMS 260 U25:996-619
		Whakawaihine Stream	From the confluence with the Akitio River at approx NZMS 260U25:985-657 to a point approx two kilometres upstream at approx U25:989-670
Northern Coastal	Northern Coastal	Okehu Stream	From the stream mouth to intersection with SH3 at approx NZMS 260 R22:717-510

Kai-Iwi	Kai-Iwi	Kai-Iwi Stream	From the stream mouth to 100 metres upstream of the CMA boundary located at the seaward edge of the bridge that crosses the stream at NZMS 260 R22:721-452
Mowhanau	Mowhanau	Mowhanau Stream	From the stream mouth to Rapanui Road at approx NZMS 260 R22: 731-452
Kaitoke Lakes	Kaitoke Lakes	Kaitoke Stream	From the stream mouth to Kaitoke Lake at NZMS 260: R22:869-358
Southern Whanganui Lakes	Southern Whanganui Lakes	Koitiata Stream	From the stream mouth to a point 5km upstream at approx NZMS 260 S23:987-191
		Waimahora Stream	From the stream mouth to intersection with Santoft Rd at NZMS 260 S23:001-154
		Raumi Range Stream	From the stream mouth to source
Northern Manawatu Lakes	Northern Manawatu Lakes	Kaikokopu Stream	From the stream mouth to Lake Kaikokopu at NZMS 260 S24:019-899
		4 Mile Creek	From the stream mouth to Lake Pukepuke at NZMS 260 S24:024-937
Lake Papiatonga	Lake Papiatonga	Waiwiri Stream	No location defined, assume from stream mouth to a point 500m upstream at NZMS 260 S25:939-618
Lake Horowhenua	Hokio	Hokio Stream	From the stream mouth to 100 metres upstream of the CMA boundary located at the seaward edge of the bridge that crosses the stream at NZMS 260 S25:950-659

Recreational and Cultural Values



Map D:14 Amenity Value in the Manawatu-Wanganui Region

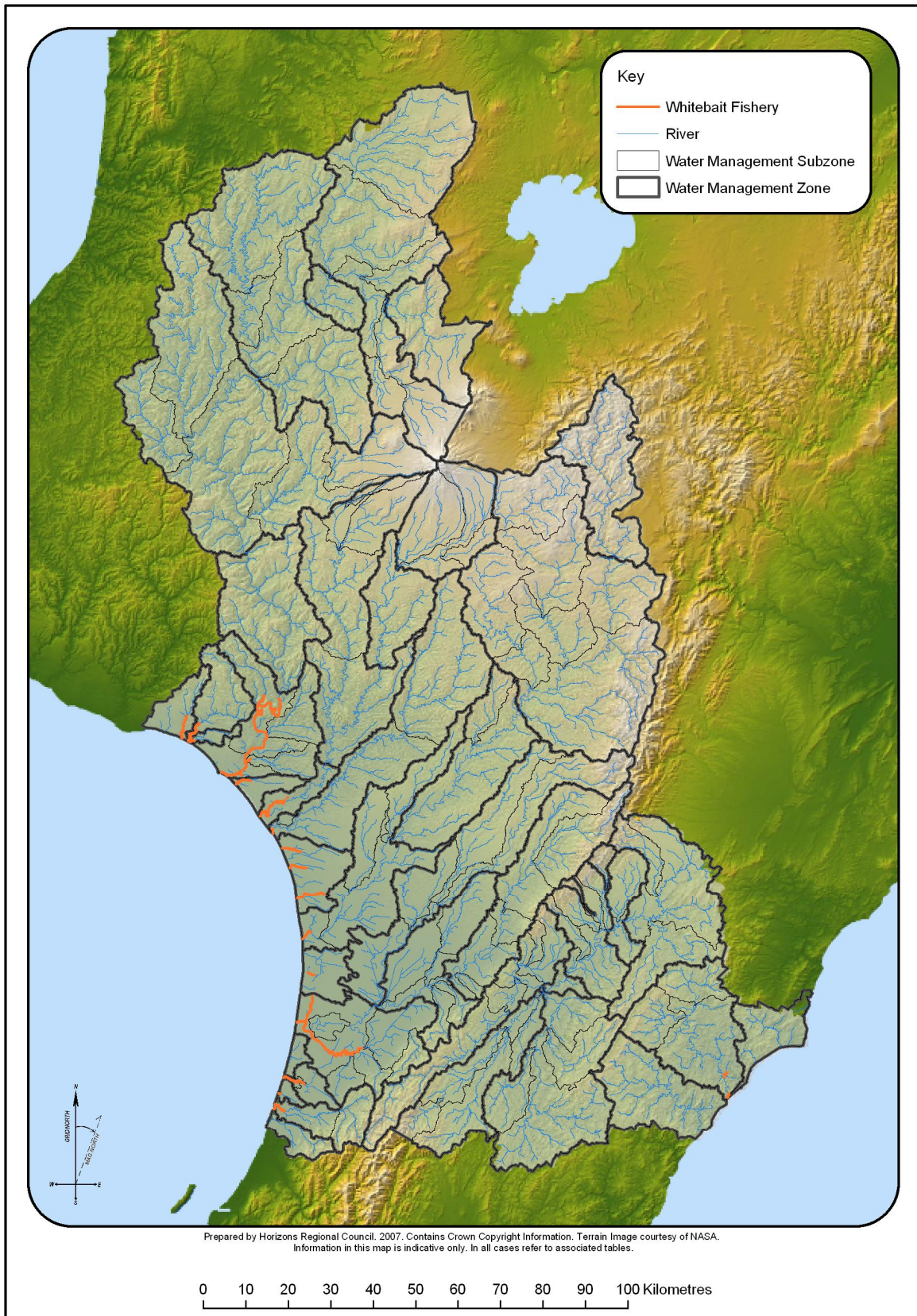
**Table D.8:** Amenity Value in the Manawatu-Wanganui Region

Management Zone	Sub zone	Site	Description
Upper Manawatu	Upper Manawatu	Manawatu River at Maunga Road	At approx NZMS 260 U23:830-079
		Manawatu River at Weber Road	At approx NZMS 260 U23:749-026
Hopelands-Tiraumea	Hopelands-Tiraumea	Manawatu River at Kumeroa (Little Road)	At approx NZMS 260 T24:636-923
		Manawatu River at Hopelands Domain (River Road)	At approx NZMS 260 T24:613-895
Mangatainoka	Lower Mangatainoka	Mangatainoka River	From approx NZMS 260 T24:503-806 to approx T24:500-802
		Mangatainoka River at SH2 Reserve	At approx NZMS 260 T24:528-832
	Makakahi	Makakahi River at Bridge Street Eketahuna	At approx NZMS 260 T25:383-588
Upper Gorge	Upper Mangahao	Mangahao River at Marima Domain	At approx NZMS 260 T24:398-745
Middle Manawatu	Middle Manawatu	Manawatu River at Ashhurst Domain	At approx NZMS 260 T24:445-964
		Manawatu at Albert Street	At approx NZMS 260 T24:342-891
	Middle Pohangina	Pohangina River at Totara Reserve	At approx NZMS 260 T23:533-168
		Pohangina River at Raumai Reserve	At approx NZMS 260 T23:474-072
Middle and Lower Manawatu	Middle and Lower Manawatu	Manawatu River	From approx NZMS 260 S24:291-872 to approx T24:353-919
Lower Manawatu	Turitea	Tiritea Stream	From approx NZMS 260 T24:316-882 to approx NZMS 260 T24:334-869
	Kahuterawa	Kahuterawa Stream at Reserve	At approx NZMS 260 T24:322-810
		Kahuterawa Stream at Camp Kilsby	At approx NZMS 260 T24:316-824
	Lower Mangaone	Mangaone Stream	From approx NZMS 260 S24:286-877 to approx T24:313-954
Oroua	Upper Oroua	Oroua River at Londons Ford	At approx NZMS 260 T23:502-254
		Oroua River at Bartletts Ford	At approx NZMS 260 T23:490-226
		Oroua River at Almadale	At approx NZMS 260 T23:362-113
	Middle Oroua	Oroua River at Timona Park	At approx NZMS 260 S23:299-064
		Oroua River	From approx NZMS 260 S24:293-043 to confluence with the Kiwitea Stream at approx NZMS 260 T23:308-066
	Kiwitea	Kiwitea Stream	From confluence with the Oroua River at approx NZMS 260 T23:308-066 to approx NZMS 260 T23:311-075
	Makino	Makino Stream	From approx NZMS 260 S23:276-053 to the intersection with Roots Street at approx NZMS 260 S23:289-082
Coastal Manawatu	Coastal Manawatu	Foxton Beach	At approx NZMS 260 S24:978-806
	Lower Tokomaru	Tokomaru River at Horseshoe Bend	At approx NZMS 260 S24:241-768
		Tokomaru River Bank Reserve (SH57)	At approx NZMS 260 S24:222-770
	Foxton Loop	Foxton Loop Reserve	From approx NZMS 260 S24:031-783 to approx NZMS 260 S24:027-796
		Foxton Loop Reserve	At approx NZMS 260 S24:033-785
Middle Rangitikei	Pukeokahu – Mangaweka	Rangitikei River upstream Hautapu Confluence (Toe Toe Rd)	At approx NZMS 260 T22:531-573
	Upper and Lower	Hautapu River	From the confluence with the Otaihape

Management Zone	Sub zone	Site	Description
	Hautapu		Stream at approx NZMS 260 T21:507-656 to approx T21:502-671
	Lower Hautapu	Hautapu River at Papakai Park/Spooner's Hill	At approx NZMS 260 T21:505-670
		Otaihape Stream	From confluence with the Hautapu River at approx NZMS 260 T21:507-656 to approx T21:492-652
Lower Rangitikei	Lower Rangitikei	Rangitikei River at Mangaweka	At approx NZMS 260 T22:503-513
		Rangitikei River at Vinegar Hill	At approx NZMS 260 T22:358-379
		Rangitikei at Makino Rd/Rue Rue Rd	At approx NZMS 260 S23:213-226
Coastal Rangitikei	Tidal Rangitikei	Holben Reserve	At approx NZMS 260 S24:989-997
	Tutaenui	Tutaenui Stream	From approx NZMS 260 S23:133-209 to approx S23:133-252
Cherry Grove	Cherry Grove	Whanganui River at Manunui	At approx NZMS 260 S18:104-556
		Whanganui River at Cherry Grove	At approx NZMS 260 S18:057-545
		Whanganui River	From Confluence with the Ongarue River at approx NZMS 260 S18:055-544 to approx S18:100-554
	Lower Whakapapa	Whakapapa River at Owhango	At approx NZMS 260 S19:178-426
	Lower Ongarue	Ongarue River at various swimming holes at Taringamotu	At approx NZMS 260 S18:057-546
		Ongarue River	From Confluence with the Whanganui River at approx NZMS 260 S18:055-544 to approx S18:043-575
Pipiriki	Lower Manganui o te Ao	Manganui o te Ao River at Ruatiti	At approx NZMS 260 S20:996-079
Lower Whanganui	Lower Whanganui	Whanganui River at Mosquito Point	At approx NZMS 260 S22:902-473
	Lower and Coastal Whanganui	Whanganui River	From River Mouth to approx NZMS 260 R22:888-434
	Coastal Whanganui	Castlecliff Beach	At approx NZMS 260 R22:788-388
	Matarawa	Matarawa Stream	From Confluence with the Whanganui River at approx NZMS 260 R22:857-397 to approx R22:872-408
Lower Whangaehu	Upper Mangawhero	Mangawhero River	From approx NZMS 260 S20:156-963 to approx S20:178-976
Coastal Whangaehu	Coastal Whangaehu	Whangaehu Beach	At approx NZMS 260 R23:893-269
Lower Turakina	Lower Turakina	Turakina Beach – Koitiata	At approx NZMS 260 S23:921-234
Ohau	Lower Ohau	Ohau River at Kimberley Reserve	At approx NZMS 260 S25:059-574
		Ohau River at Kirkcaldies Bridge Reserve	At approx NZMS 260 S25:027-567
		Ohau River at Gladstone Reserve	At approx NZMS 260 S25:076-577
		Ohau River at Parikawau Reserve	At approx NZMS 260 S25:994-553
East Coast	East Coast	Herbertville Beach	At approx NZMS 260 V24:103-719
Akitio	Lower Akitio	Akitio River	At approx NZMS 260 U25:991-611
		Akitio Beach	At approx NZMS 260 U25:989-597
Northern Coastal	Northern Coastal	Ototoka Stream at William Birch Pool	At approx NZMS 260 R22:676-519
		Ototoka Stream	At approx NZMS 260 R22:666-471
		Ototoka Beach	At approx NZMS 260 R22:667-471
Kai Iwi	Kai Iwi	Kai Iwi Stream	At approx NZMS 260 R22:723-451
		Kai Iwi Beach	At approx NZMS 260 R22:725-448
Mowhanau	Mowhanau	Mowhanau Stream	At approx NZMS 260 R22:726-448

<b>Management Zone</b>	<b>Sub zone</b>	<b>Site</b>	<b>Description</b>
<b>Kaitoke Lakes</b>	Kaitoke Lakes	Lake Wiritoa	At approx NZMS 260 R22:882-344
		South Beach	At approx NZMS 260 R22:882-344
<b>Southern Wanganui Lakes</b>	Southern Wanganui Lakes	Lake Dudding	At approx NZMS 260 S23:045-203
<b>Northern Manawatu Lakes</b>	Northern Manawatu Lakes	Kaikokupu Stream at Himatangi Beach	At approx NZMS 260 S24:993-905
		Himatangi Beach	At approx NZMS 260 S24:991-905
<b>Waitarere</b>	Waitarere	Waitarere Beach	At approx NZMS 260 S24:958-701
		Wairarawa Stream at Waitarere Beach	At approx NZMS 260 S24:959-709
<b>Waikawa</b>	Waikawa	Waikawa Stream @ Hank Edwards Reserve	At approx NZMS 260 S25:915-553
<b>Lake Horowhenua</b>	Hokio	Hokio Stream @ Hokio Beach	At approx NZMS 260 S25:949-657





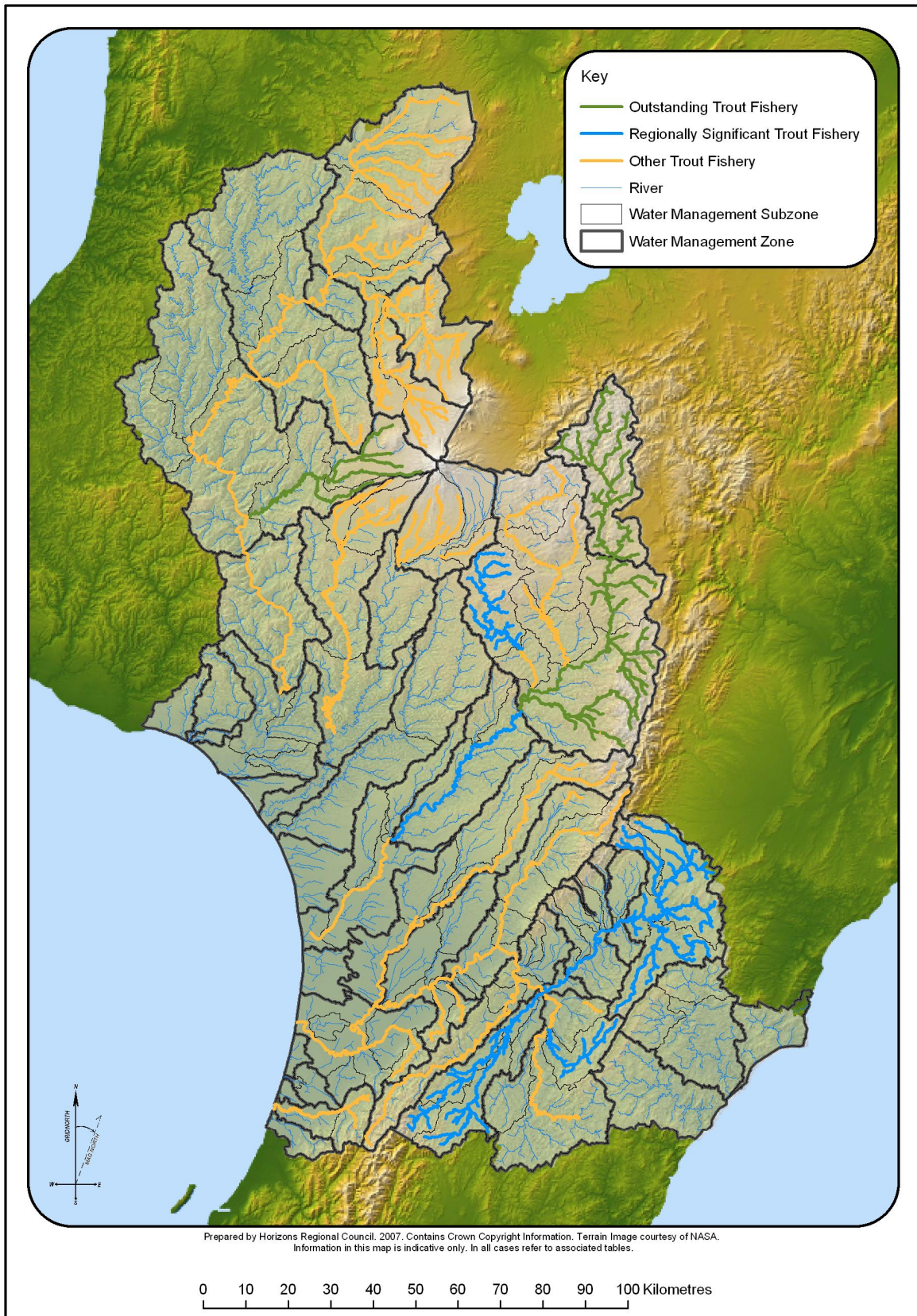
**Map D:15** Native Fishery Value in the Manawatu-Wanganui Region

**Table D.9:** Native Fishery Value Location in the Manawatu-Wanganui Region

Management Zone	Sub-zone	River/Stream Name	Reference
Coastal Manawatu	Coastal Manawatu	Manawatu River	From the river mouth to the Foxton Shannon Road bridge at approx NZMS 260 S24:133-727
		Holben Parade Creek	From the confluence with the Manawatu River at approx NZMS 260 S24:981-789 to the intersection with Seabury Avenue at approx S24:986-800
		Whitebait Creek	From the confluence with the Manawatu River at approx 982-791 to source
Coastal Rangitikei	Tidal Rangitikei	Rangitikei River	From the river mouth to a point 100 metres upstream of the CMA boundary located at the seaward edge of the boat ramp on the true left bank of the river located at approx NZMS 260 S24:009-000
Lower Whanganui	Lower Whanganui	Kauarapaoa Stream	From the confluence with the Whanganui River at approx NZMS 260 R22:886-537 to the intersection with McNab's Access Road at approx S22:900-559
		Mateongaonga Stream	From the confluence with the Whanganui River at approx NZMS 260 R22:876-434 to the intersection with Riverbank Road at approx R22:877-433
	Lower/Coastal Whanganui	Whanganui River	From the river mouth to Parikino at approx NZMS 260 S22:936-551
	Coastal Whanganui	Stream opposite Corliss Island	From the confluence with the Whanganui River at approx NZMS 260 R22:835-374 to the intersection with Wikitoria Road at approx R22:849-371
		Omapu Stream	From the stream mouth to a point 1km upstream at NZMS 260 R22: 750-441
	Matarawa	Matarawa Stream	From the confluence with the Whanganui River at approx NZMS 260 R22:858-398 to the intersection with Ikitara Road at approx R22:869-409
Coastal Whangaehu	Coastal Whangaehu	Whangaehu River	From the river mouth to the SH3 bridge at approx NZMS 260 S22:950-310
Turakina	Lower Turakina	Turakina River	From the river mouth to a point 100 metres upstream of the CMA boundary located at the continuation of the fence line at approx NZMS 260 S23:918-246
Ohau	Lower Ohau	Ohau River	From the river mouth to a point 5km upstream at approx NZMS 260 948-579
		Lake Waitaha Drain	From the confluence with the Ohau River at approx NZMS 260 S25:946-580 to the Lake Waitaha Outlet at approx S25:954-605
Akitio	Lower Akitio	Akitio River	From the river mouth to 100 metres upstream of the CMA boundary located at the seaward edge of the bridge that crosses the river at approx NZMS 260 U25:996-619
		Whakawahine Stream	From the confluence with the Akitio River at approx NZMS 260 U25:985-657 to a point approx two kilometres upstream at approx U25:989-670



Management Zone	Sub-zone	River/Stream Name	Reference
Northern Coastal	Northern Coastal	Okehu Stream	From the stream mouth to intersection with SH3 at approx NZMS 260 R22:717-510
Kai-Iwi	Kai-Iwi	Kai-Iwi Stream	From the stream mouth to the intersection with SH3 at approx NZMS 260 R22:749-492
Mowhanau	Mowhanau	Mowhanau Stream	From the stream mouth to a point 1km upstream at approx NZMS 260 R22:736-452
Kaitoke Lakes	Kaitoke Lakes	Kaitoke Stream	From the Stream mouth to Kaitoke Lake at approx NZMS 260: R22:869-358
Southern Whanganui Lakes	Southern Whanganui Lakes	Koitiata Stream	From the stream mouth to a point 5km upstream at approx NZMS 260 S23:987-191
		Waimahora Stream	From the stream mouth to intersection with Santoft Rd at approx NZMS 260 S23:001-154
		Raumai Range Stream	From the stream mouth at approx NZMS 260:S23:979-081 to Source
Northern Manawatu Lakes	Northern Manawatu Lakes	Kaikokopu Stream	From the stream mouth to Lake Kaikokopu at NZMS 260 S24:019-899
		4 Mile Creek	From the stream mouth to a point 100m upstream at NZMS 260 S24:024-937
Lake Papiatonga	Lake Papiatonga	Waiwiri Stream	No location defined, assume from the stream mouth to a point 500m upstream at NZMS 260 S25:939-618
Lake Horowhenua	Hokio	Hokio Stream	From the stream mouth to Lake Horowhenua



**Map D:16** Trout Fishery Value in the Manawatu-Wanganui Region

**Table D.10:** Trout Fishery Value in the Manawatu-Wanganui Region

Management Zone	Sub-zone	River/Stream Name	Classification	Reference
Upper Manawatu, Weber Rd – Tamaki, Tamaki – Hopelands and Hopelands to Tiraumea	Upper Manawatu, Mangatewainui and Mangatoro, Weber Rd – Tamaki , Tamaki – Hopelands and Hopelands – Tiraumea	Manawatu River	Regionally Significant	From the confluence with the Tiraumea River at approx NZMS 260 T24:553-871 to source including all tributaries from the Weber Road Recorder at approx U23:747-027 to Source
Tiraumea	Upper and Lower Tiraumea	Tiraumea River	Other Trout Fishery	From the confluence with the Manawatu River at approx NZMS 260 T24:553-871 to source
	Lower Tiraumea	Makairo Stream	Other Trout Fishery	From approx NZMS 260 T24:653-834 to Source
	Makuri	Makuri River and Tributaries	Regionally Significant	From the confluence with the Tiraumea River at approx NZMS 260 T24:568-771 to Source
Mangatainoka	Upper, Middle and Lower Mangatainoka and Makakahi	Mangatainoka River and Tributaries Excluding the Mangaramarama Creek and Tributaries	Regionally Significant	From the confluence with the Tiraumea River at approx NZMS 260 T24:556-854 to Source
Upper Gorge	Upper Gorge	Manawatu River	Other Trout Fishery	From approx NZMS 260 T24:495-938 to the confluence with the Tiraumea River at approx T24:553-871
	Upper and Lower Mangahao	Mangahao River	Other Trout Fishery	From the confluence with the Manawatu River at approx NZMS 260 T24:496-892 to Source
Middle Manawatu	Middle Manawatu	Manawatu River	Other Trout Fishery	From approx NZMS 260 T24:332-890 to approx T24:495-938
	Upper, Middle and Lower Pohangina	Pohangina River	Other Trout Fishery	From the confluence with the Manawatu River at approx NZMS 260 T24:449-966 to Source
	Middle Pohangina	Makiekie (Coal) Creek	Other Trout Fishery	From the confluence with the Pohangina River at approx NZMS 260 T23:528-166 to source
Lower Manawatu	Lower Manawatu	Manawatu River	Other Trout Fishery	From approx NZMS 260 T24:332-890 to Oroua Confluence at approx S24:164-825
	Turitea	Turitea Stream	Other Trout Fishery	From approx 800m Downstream of the Old West Road Bridge at approx NZMS 260 T24:331-875 to approx T24:365-790
	Kahuterawa	Kahuterawa stream	Other Trout Fishery	From the confluence with the Manawatu River at approx NZMS 260 S24:293-871 to Source
Oroua	Upper, Middle and Lower Oroua	Oroua River	Other Trout Fishery	From the confluence with the Manawatu River at approx NZMS 260 S24:164-826 to approx U22:729-400

Management Zone	Sub-zone	River/Stream Name	Classification	Reference
	Upper Oroua	Mangiora Stream	Other Trout Fishery	From the confluence with the Oroua River at approx NZMS 260 T22:577-379 to Source
	Makino	Makino Stream	Other Trout Fishery	From the confluence with the Oroua River at approx NZMS 260 S23:243-005 to approx S23:260-037
Coastal Manawatu	Coastal Manawatu	Manawatu River	Other Trout Fishery	From 100 metres upstream of the CMA Boundary located at the seaward edge of Foxton Loop at approx NZMS 260 S24:010-767 to the confluence with the Oroua River at approx S24:164-825
	Upper and Lower Tokomaru	Tokomaru River	Other Trout Fishery	From the confluence with the Manawatu River at approx NZMS 260 S24:132-727 to source
Upper Rangitikei	Upper Rangitikei	Rangitikei River and Tributaries	Outstanding	From the Makahikatoa Stream Confluence at approx NZMS 260 U21:725-887 to Source
Middle Rangitikei	Middle Rangitikei	Rangitikei River	Outstanding	From approx NZMS 260 U21:713-707 to the confluence with the Makahikatoa Stream at approx U21:725-887
		Porotaiana Stream	Outstanding	From the confluence with the Rangitikei River at approx NZMS 260 U21:714-878 to Source
		Mangaururoa Stream	Outstanding	From the confluence with the Rangitikei River at approx NZMS 260 U21:710-852 to Source
		Whangaipotiki Stream	Outstanding	From the confluence with the Rangitikei River at approx NZMS 260 U21:700-819 to Source
		Mangaohane Stream	Outstanding	From the confluence with the Rangitikei River at approx NZMS 260 U21:707-818 to Source
		Makomiko East Stream	Outstanding	From the confluence with the Rangitikei River at approx NZMS 260 U21:709-792 to Source
		Tamatipama Stream	Outstanding	From the confluence with the Makomiko East Stream at approx NZMS 260 U21:681-802 to Source
		Waiakaha Stream	Outstanding	From the confluence with the Rangitikei River at approx NZMS 260 U21:707-785 to Source
		Pokopoko Stream	Outstanding	From the confluence with the Rangitikei River at approx NZMS 260 U21:722-758 to Source
	Pukeokahu - Mangaweka	Rangitikei River	Outstanding	From approx NZMS 260 the confluence with the Mangawharariki River approx NZMS 260 T22:504-519 to approx U21:713-707
	Whakaurekou River and Tributaries	Outstanding	From the confluence with the Rangitikei River at approx NZMS 260 U21:712-690 to Source	

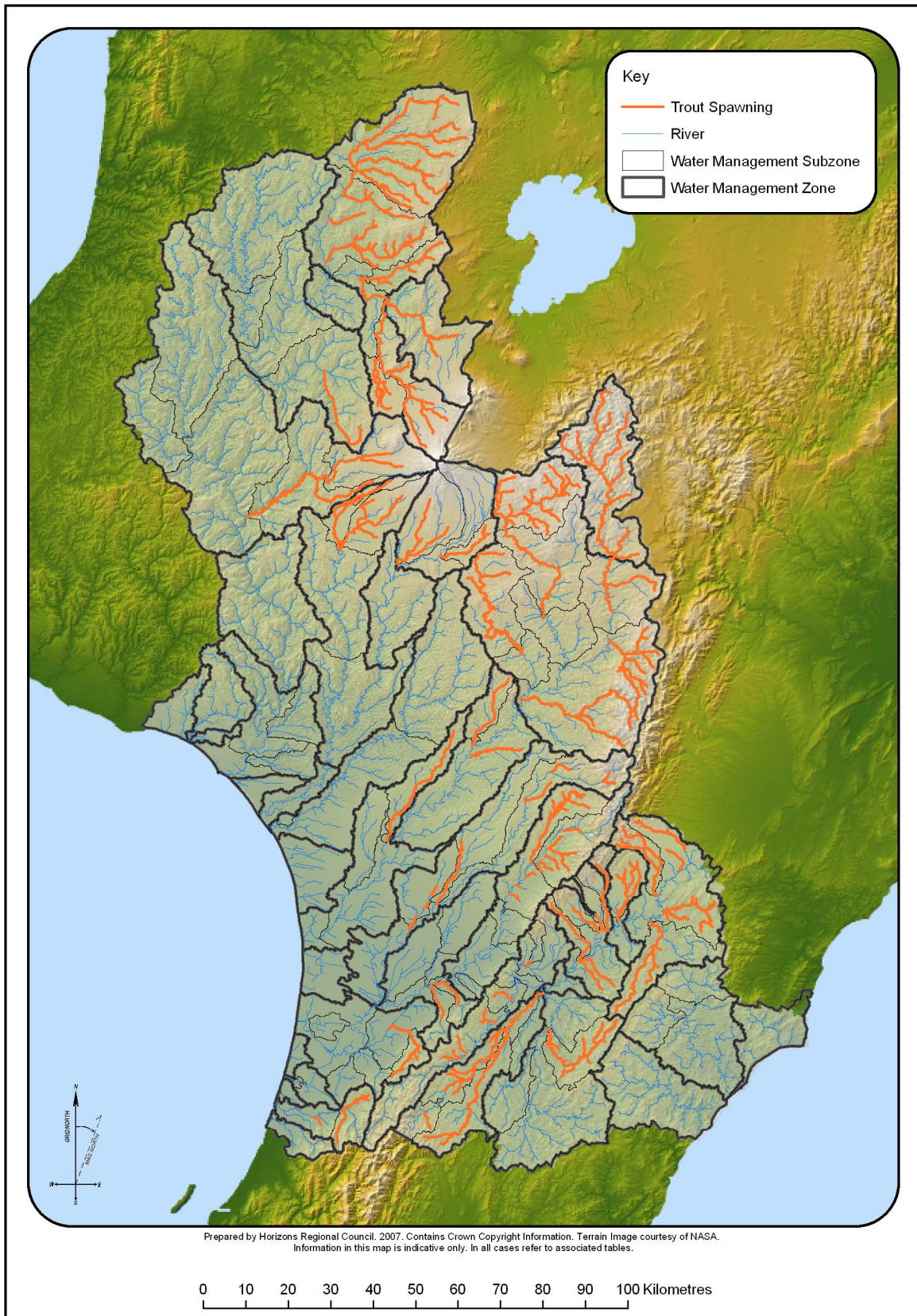
Management Zone	Sub-zone	River/Stream Name	Classification	Reference
		Kawhatau River and Tributaries	Outstanding	From Confluence with the Rangitikei River at approx T22:504-551 to Source
	Upper, Middle and Lower Moawhango	Moawhango River	Other Trout Fishery	From the confluence with the Rangitikei River at approx NZMS 260 T21:609-623 to source
	Middle Moawhango	Aorangi Stream	Other Trout Fishery	From the confluence with the Moawhango River at approx NZMS 260 T21:595-858 to source
	Lower Moawhango	Tikirere Stream	Other Trout Fishery	From the confluence with the Moawhango River at approx T21:559-741 to Source
	Upper Hautapu	Hautapu River and Tributaries	Regionally Significant	From the confluence with the Oraukura Stream at approx NZMS 260 T21:509-670 to Source
	Lower Hautapu	Hautapu River	Other Trout Fishery	From the confluence with the Rangitikei River at approx NZMS 260 T22:528-573 to the Oraukura Stream Confluence at approx T22:509-670
Lower Rangitikei	Lower Rangitikei	Rangitikei River	Regionally Significant	From NZMS 260 S23:200-221 494 to the confluence with the Mangawharariki River at approx T22:504-519t
Coastal Rangitikei	Coastal/Tidal Rangitikei	Rangitikei River	Other Trout Fishery	From 100 metres upstream of the CMA Boundary located at the seaward edge of the boat ramp at approx NZMS 260 S24:009-000
Upper Whanganui	Upper Whanganui	Whanganui River	Other Trout Fishery	From the confluence with the Ongarue River at approx NZMS 260 S18:054-544 to the to Source
		Otamangakau Dam	Other Trout Fishery	From the confluence with the Whanganui River at approx NZMS 260 T19:367-409 to T19:375-414
		Otamangakau Canal	Other Trout Fishery	From the confluence with the Whanganui River at NZMS 260 T19:367-409 to Source
		Okupata Stream	Other Trout Fishery	From the confluence with the Whanganui River at approx NZMS 260 S19:289-406 to Source
		Mangatepopo Stream	Other Trout Fishery	From the confluence with the Okupata Stream at approx NZMS 260 S19:287-397 to Source
		Waione Stream	Other Trout Fishery	From the confluence with the Whanganui River at approx NZMS 260 S19:276-427 to Source
		Waipari Stream	Other Trout Fishery	From the confluence with the Whanganui River at approx NZMS 260 S19:269-455 to Source
		Waione Stream	Other Trout Fishery	From the confluence with the Waipari Stream at approx NZMS 260 S18:282-516 to Source



Management Zone	Sub-zone	River/Stream Name	Classification	Reference
		Waipungapunga Stream	Other Trout Fishery	From the confluence with the Waipari Stream at approx NZMS 260 S19:287-490 to Source
		Waionenui Stream	Other Trout Fishery	From the confluence with the Waipari Stream at approx NZMS 260 S19:288-475 to Source
		Waione Stream	Other Trout Fishery	From the confluence with the Waipari Stream at approx NZMS 260 S19:282-464 to Source
		Mako Stream	Other Trout Fishery	From the confluence with the Whanganui River at approx NZMS 260 S19:231-455 to Source
		Taringapupu Stream	Other Trout Fishery	From the confluence with the Whanganui River at approx NZMS 260 S19:205-477 to Source
		Herungaweka Stream	Other Trout Fishery	From the confluence with the Taringapupu Stream at approx NZMS 260 S18:229-511 to Source
		Paewaru Stream	Other Trout Fishery	From the confluence with the Taringapupu Stream at approx NZMS 260 S19:216-488 to Source
		Papanui Stream	Other Trout Fishery	From the confluence with the Whanganui River at approx NZMS 260 S19:192-485 to Source
Cherry Grove	Cherry Grove	Kakahi Stream	Other Trout Fisher	From the confluence with the Whanganui River at approx NZMS 260 S19:151-497 to source
	Upper Whakapapa	Whakapapa River	Other Trout Fishery	From approx NMZS 260 S19:226-295 to the confluence with the Whakapapiti and Whakapapanui Streams at approx NZMS 260 S19:243-268
		Whakapapiti Stream	Other trout Fishery	From the confluence with the Whakapapa River at approx NZMS 260 S19:243-268 to Source
		Whakapapnui Stream	Other Trout Fishery	From the confluence with the Whakapapa River at approx NZMS 260 S19:243-268 to Source
		Makahikatoa Stream	Other Trout Fishery	From the confluence with the Whakapapnui Stream at approx NZMS 260 S19:273-244 to Source
		Taranaki Stream	Other Trout Fishery	From the confluence with the Makahikatoa Stream at approx NZMS 260 S19:296-235 to Source
		Pukeonaki Stream	Other Trout Fishery	From the confluence with the Whakapapnui Stream at approx NZMS 260 S19:269-255 to Source
		Tawahi Stream	Other Trout Fishery	From the confluence with the Whakapapaiti Stream at approx NZMS 260 S19:242-265 to approx S19:242-256

Management Zone	Sub-zone	River/Stream Name	Classification	Reference	
		Papamanuka Stream	Other Trout Fishery	From the confluence with the Whakapapa Stream at NZMS 260 S19:234-288 to NZMS 260 S19:277-281	
	Lower Whakapapa	Whakapapa River	Other Trout Fishery	From the confluence with the Whanganui River at approx NZMS 260 S19:188-495 to approx NZMS 260 S19:226-295	
		Unnamed Tributary of the Whakapapa River	Other Trout Fishery	From the confluence with the Whakapapa River at approx NZMS 260 S19:174-416 to Source	
		Otamawairua Stream	Other Trout Fishery	From the confluence with the Whakapapa River at approx NZMS 260 S19:193-324 to Source	
	Piopiotea Stream	Piopiotea Stream and Tributaries	Other Trout Fishery	From the confluence with the Whakapapa River at approx NZMS 260 S19:174-356 to Source	
	Pungapunga	Pungapunga River	Other Trout Fishery	From approx NZMS 260 S18:124-544 to approx S18:266-577	
	Upper and Lower Ongarue	Ongarue River	Other Trout Fishery	From the confluence with the Whanganui River at approx NZMS 260 S18:055-544 to Source	
	Upper Ongarue	Waimiha Stream	Other Trout Fishery	From the confluence with the Ongarue River approx NZMS 260 S17:132-862 to Source	
		Okauaka Stream	Other Trout Fishery	From the confluence with the Ongarue River at approx NZMS 260 S17:188-864 to Source	
		Matramataha River	Other Trout Fishery	From the confluence with the Ongarue River at approx NZMS 260 S17:116-806 to Source	
	Lower Ongarue	Mangakahu Stream	Other Trout Fishery	From the confluence with the Ongarue River at approx NZMS 260 S18:087-736 to Source	
		Taringamotu River and Tributaries	Other Trout Fishery	From the confluence with the Ongarue River at approx NZMS 260 S18:046-582 to Source	
	Middle Whanganui	Retaruke	Retaruke River	Other Trout Fishery	From the confluence with the Whanganui River at approx NZMS 260 R19:889-309 to Source
	Pipiriki	Upper Manganui o te Ao	Manganui o Te Ao River	Outstanding Trout Fishery	From the confluence with the Hoihenga Stream at approx NZMS 260 S20:046-078 to Source
Mangaturuturu River			Outstanding Trout Fishery	From the confluence with the Manganui o Te Ao River at approx NZMS 260 S20:056-067 to Source	
Makatoe River			Outstanding Trout Fishery	From the confluence with the Manganui o Te Ao River at approx NZMS 260 S20:128-119 to Source	

Management Zone	Sub-zone	River/Stream Name	Classification	Reference
		Waimarino Stream	Outstanding Trout Fishery	From the confluence with the Manganui o Te Ao River at approx NZMS 260 S20:128-119 to Source
	Lower Manganui o t e Ao	Manganui o te Ao River	Outstanding Trout Fishery	From the confluence with the Whanganui River at approx NZMS 260 R20:860-979 to the Hoihenga Stream Confluence at approx S20:056-067
		Orautoha Stream	Outstanding Trout Fishery	From the confluence with the Manganui o te Ao River at approx NZMS 260 S20:026-067 to Source
Pipiriki and Paetawa	Pipiriki and Paetawa	Whanganui River	Other Trout Fishery	From approx NZMS 260 S22:937-563 to confluence with the Retaruke at approx R19:889-309
Upper Whangaehu	Waitangi	Waitangi Stream	Other Trout Fishery	From the confluence with the Whangaehu River at approx NZMS 260 T21:315-888 to Source
	Tokiahuru	Tokiahuru Stream and Tributaries	Other Trout Fishery	From the confluence with the Whangaehu River at approx NZMS 260 S21:218-865 to Source
Lower Whangaehu	Upper Mangawhero	Mangawhero River Including the Taonui Stream and all tributaries upstream of the Taonui Stream	Other Trout Fishery	From the confluence with the Makotuku River at approx NZMS 260 S20:079-902
	Upper and Lower Makotuku	Makotuku River and Tributaries	Other Trout Fishery	From the confluence with the Mangawhero River at approx NZMS 260 S20:079-902
	Lower Mangawhero and Lower Whangaehu	Mangawhero River	Other Trout Fishery	From the confluence with the Whangaehu River at approx NZMS 260 S22:065-470 to confluence with the Makotuku River at approx NZMS 260 S20:079-902
Ohau	Upper and Lower Ohau	Ohau River	Other Trout Fishery	From mouth to Source including the Makahika Stream and Tributaries and an unnamed Tributary at approx NZMS 260 S25:974-585



**Map D:17** Trout Spawning Value in the Manawatu-Wanganui Region

**Table D.11:** Trout Spawning Value in the Manawatu-Wanganui Region

Management Zone	Sub-zone	River/Stream Name	Reference
Upper Manawatu	Upper Manawatu	Manawatu River	From the confluence with the Kahututaeatua Stream at approx NZMS 260 U23:891-194 to source
		Mangarangiara Stream and Tributaries	From the confluence with the Manawatu River at approx NZMS 260 U23:879-145 to source
		Mahuraiti Stream	From the confluence with the Manawatu River at approx NZMS 260 U23:853-235 to the confluence with the Mahurunui Stream (Stoney Creek) at approx U23:850-244
		Mangapuaka Stream and Tributaries	From the Confluence with the Manawatu River at approx NZMS 260 U23:841-044 to Source
	Mangatewainui	Mangatewainui River and Tributaries	From the confluence with the Manawatu River at approx NZMS 260 U23:829-085
	Mangatoro	Mangatoro River	From the confluence with the Manawatu River at approx NZMS 260 U23:807-026 to the confluence with the Mangamarie Stream at approx U24:838-991
		Mangatoro River and Tributaries	From the confluence with the Mangamarie Stream at approx NZMS 260 U24:838-991 to Source
	Weber – Tamaki	Mangatera	Mangatera Stream
Mangatera Stream and Tributaries			From approx NZMS 260 U23:756-079 to source
Tapuata Stream			From the confluence with the Mangatera Stream at approx NZMS 260 U23:738-044 to approx U23:732-052
Upper Tamaki	Upper Tamaki	Tamaki River and Tributaries	From approx NZMS 260 U23:706-100 to source.
Tamaki – Hopelands	Tamaki – Hopelands	Otawaho Stream and Tributaries	From the confluence with the Manawatu River at approx NZMS 260 T24:651-935 to source
		Totara Stream and Tributaries	From the confluence with the Manawatu River at approx NZMS 260 T24:647-929 to source
	Lower Tamaki	Tamaki River	From the confluence with the Manawatu river at approx U23:708-002 NZMS 260 to approx U23:706-100
	Lower Kumeti	Kumeti Stream	From the confluence with the Manawatu River at approx NZMS 260 T23:697-005 to approx T23:681-041
	Oruakeretaki	Oruakeretaki Stream	From the confluence with the Manawatu River at approx NZMS 260 T24:690-999 to the confluence with the Mangapukakakahu Stream at approx T23:628-058
	Raparapawai	Raparapawai Stream	From the confluence with the Manawatu River at approx NZMS 260 T24:641-931 to source
Tiraumea	Makuri	Makuri River at Tributaries	From the confluence with the Tiraumea River at approx NZMS 260 T24:568-771 to source



Management Zone	Sub-zone	River/Stream Name	Reference
Mangatainoka	Upper Mangatainoka	Makotukutuku Stream	From the confluence with the Mangatainoka River at approx NZMS 260 S25:279-576 to source
	Middle / Lower Mangatainoka	Mangatainoka River	From approx NZMS 260 T24:558-857 to the confluence with the Mangaroa Stream at approx T25:324-627
	Middle Mangatainoka	Mangaraupiu Stream	From the confluence with the Mangatainoka River at approx NZMS 260 T25:366-655 to approx T25:322-665
		Unnamed Tributary of the Mangatainoka River and Tributaries	From the confluence with the Mangatainoka River at approx NZMS 260 T25:369-654 to source
		Hukanui Stream	From the confluence with the Mangatainoka River at approx NZMS 260 T25:396-680 to approx T25:341-676
		Mangamarie Stream	From the confluence with the Mangatainoka River at approx NZMS 260 T24:451-762 to approx T24:433-742
	Makakahi	Makakahi River	From the confluence with the Mangatainoka River at approx NZMS 260 T24:475-775 to source
		Bruce Stream	From the confluence with the Makakahi River at approx NZMS 260 T25:346-524 to source
	Upper Gorge	Mangapapa	Mangapapa Stream
Upper Mangahao		Unnamed Tributary	From the confluence with the Mangahao River at approx NZMS 260 T24:348-700 to source
		Unnamed Tributary	From the confluence with the Mangahao River at approx NZMS 260 T24:364-704 to source
		Orangane Stream	From the confluence with the Mangahao River at approx NZMS 260 T24:377-716
		Matarua Creek	From the confluence with the Mangahao River at approx NZMS 260 T24:445-788 to source
		Unnamed Tributary	From the confluence with the Matarua Creek at approx NZMS 260 T24:422-793 to source
Lower Mangahao		Makaretu Creek	From the confluence with the Mangahao River at approx NZMS 260 T24:484-844 to Source
Upper Pohangina		Pohangina River	From confluence with the Whangapuna Stream at approx NZMS 260 T23:605-240 to approx T23:647-236
		Konewa Stream and Tributaries	From the confluence with the Pohangina River at approx NZMS 260 T23:575-203 to source
		Makewekaweka Stream and Tributaries	From the confluence with the Pohangina River at approx NZMS 260 T23:568-199 to source
		Te Ekaou Stream	From the confluence with the Pohangina River at approx NZMS 260 T23:562-180 to approx T23:594-150

Management Zone	Sub-zone	River/Stream Name	Reference	
		Porewa Stream	From the confluence with the Pohangina River at approx NZMS 260 T23:549-163 to approx T23:579-147	
		Opawe Stream	From the confluence with the Pohangina River at approx NZMS 260 T23:544-161 approx T23:556-144	
	Middle Pohangina	Makiekie (Coal) Creek and Tributaries	From the confluence with the Pohangina River at approx NZMS 260 T23:528-165 to source	
		Ohinetapu Stream and Tributaries	From the confluence with the Pohangina River at approx NZMS 260 T23:517-131 to Source	
		Maranganui Stream	From the confluence with the Pohangina River at approx NZMS 260 T23:492-112 to approx T23:504-107	
		Te Awaoteatua Stream	From the confluence with the Pohangina River at approx NZMS 260 T23:480-090 to approx T23:499-077	
		Makohine Stream	From the confluence with the Pohangina River at approx NZMS 260 T23:469-058 to source	
Lower Manawatu	Turitea	Tiritea Stream	From the confluence with the Manawatu River at approx NZMS 260 T24:302-879 to approx T24:357-827	
	Kahuterawa	Kahuterawa Stream	From the confluence with the Manawatu River at approx NZMS 260 S24:293-870 to approx T24:317-796	
Oroua	Upper Oroua	Oroua River	From the confluence with the Tunupo Creek at approx NZMS 260 T22:699-356 to approx U22:715-378	
		Tunupo Creek	From the confluence with the Oroua River at approx NZMS 260 T22:699-356 to source	
		Mangiora Stream	From the confluence with the Oroua River at approx NZMS 260 T22:577-378 to the confluence with Scandlyn creek at approx T22:621-384	
		Mangapikopiko Stream	From the confluence with the Oroua River at approx NZMS 260 T22:515-307 to source	
	Kiwitea	Kiwitea Stream	From the confluence with the Oroua River at approx NZMS 260 T23:308-066 to approx T23:363-215	
	Makino	Makino Stream		From approx NZMS 260 S23:294-088 to approx T23:307-111
				From approx NZMS 260 S23:279-058 to approx S23:286-069
			From confluence with the Oroua River at approx NZMS 260 S23:243-005 to approx S23:259-037	
Coastal Manawatu	Upper and Lower Tokomaru	Tokomaru River and Tributaries	From the confluence with the Linton Drain at approx NZMS 260 S24:196-774 to source	
Upper Rangitikei	Upper Rangitikei	Ecology Stream	From the confluence with the Rangitikei River at approx NZMS 260 T20:691-176 to source	
		Otamatenui Stream	From the confluence with the Rangitikei River at approx NZMS 260 T20:672-107 to source	

Management Zone	Sub-zone	River/Stream Name	Reference
		Makomiko Stream	From the confluence with the Otamatenui Stream at approx NZMS 260 T20:650-120 to source
		Mangamarie River	From the confluence with the Rangitikei River at approx NZMS 260 T20:691-090 to source
		Waingakia Stream	From the confluence with the Rangitikei River and approx NZMS 260 U20:715-053 to source
		Otutua Stream	From the confluence with the Rangitikei River at approx NZMS 260 U20:716-014 to source
		Otarere Stream and Tributaries	From the confluence with the Okorotehehe Stream at approx NZMS 260 T20:684-988 to source
		Mangamarahia Stream	From the confluence with the Rangitikei River at approx NZMS 260 U21:723-889 to approx U20:756-954
		Makahikatoa Stream including all Tributaries	From the confluence with the Rangitikei River at approx NZMS 260 U21:725-887 to source
Middle/Upper Rangitikei	Middle/Upper Rangitikei	Rangitikei River	From the confluence with the Pokopoko Stream at approx NZMS 260 U24:721-758 to source
Middle Rangitikei	Middle Rangitikei	Mangaohane Stream	From the confluence with the Rangitikei River at approx NZMS 260 707-818 to source
	Pukeokahu – Mangaweka	Whakaurekou River	From the confluence with the Rangitikei River at approx NZMS 260 U21:712-690 to the Confluence with the Mangatera river and Maropea River at approx NZMS 260 U21:749-655
		Mangatera River and Maropea River and Tributaries	From the confluence with the Whakaurekou River at approx NZMS 260 U21:749-655 to source
		Kawhatau River	From the confluence with the Rangitikei River at approx NZMS 260 T22:504-551 to source
		Porangakai River	From the Confluence with the Mangakukeke Stream at approx NZMS 260 T22:635-507 to source
		Mangakukeke Stream	From the confluence with the Kawhatau River at approx NZMS 260 T22:634-508 to approx T22:677-486
	Upper Moawhango	Moawhango River and Tributaries	From Approx NZMS 260 T20:468-948 to source
	Middle Moawhango	Moawhango River	From the confluence with the Tikirere Stream at approx NZMS 260 T21:559-741 to approx T20:468-948
	Upper Hautapu	Waiouru Stream and Tributaries	From the confluence with the Hautapu River at approx NZMS 260 T21:410-838 to source
		Irirangi	From the confluence with the Hautapu River at approx NZMS 260 T21:407-810 to source
	Upper and Lower Hautapu	Hautapu River	From the confluence with the Otaihape Stream at approx NZMS 260 T21:506-656 to source

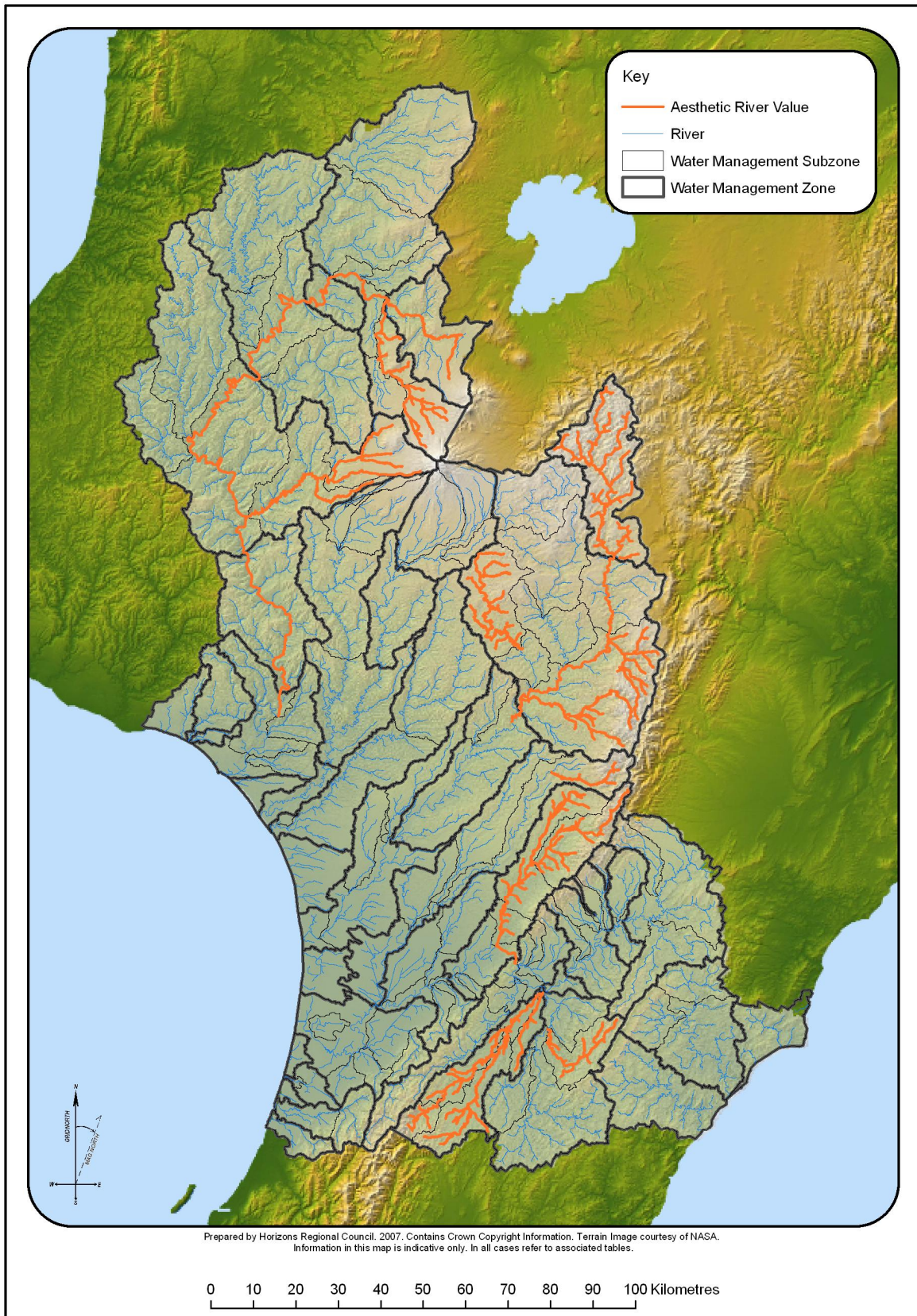
Management Zone	Sub-zone	River/Stream Name	Reference
Lower Rangitikei	Lower Rangitikei	Mangamako Stream	From Confluence with the Rangitikei River at NZMS 260 T22:389-415 to Source
	Makohine	Makohine Stream	From Confluence with the Rangitikei River at NZMS 260 T22:390-440 to Source
Coastal Rangitikei	Porewa	Porewa Stream	From the confluence with the Rangitikei River at approx NZMS 260 S23:191-215 to source
Upper Whanganui	Upper Whanganui	Whanganui River	From the confluence with the Whakapapa River at approx NZMS 260 S19:188-495 to approx T19:358-411
		Mangatepopo Stream	From the confluence with the Whanganui River at approx NZMS 260 S19:289-405 to approx T19:308-360
Cherry Grove	Cherry Grove	Whanganui River	From the confluence with the Pungapunga River at approx NZMS 260 S18:124-544 to the confluence with the Whakapapa River at approx S 260 S19:188-495
	Upper and Lower Whakapapa	Whakapapa River	From the confluence with the Whanganui River at approx NZMS 260 S19:188-495 to the confluence with the Whakapapanui Stream and the Whakapapaiti Stream at approx NZMS 260 S19:243-268
	Upper Whakapapa	Whakapapanui Stream	From the confluence with the Whakapapa River and the Whakapapaiti Stream at approx NZMS 260 S19:243-268 to source
		Whakapapaiti Stream	From the confluence with the Whakapapa River and the Whakapapanui Stream at approx NZMS 260 S19:243-268 to Source
		Mahikatoa Stream	From the confluence with the Whapapanui Stream at approx NZMS 260 S19:273-245 to confluence with Taranaki Stream approx NZMS 260 S19:295-236
		Taranaki Stream	From the confluence with the Mahikatoa Stream at approx NZMS 260 S19:295-236 to source
		Pukeonaki Stream	From the confluence with the Whapapanui Stream at approx NZMS 260 S19:269-255 to source
		Papamanuka Stream	From the confluence with the Whakapapa River at approx NZMS 260 S19:233-288 to approx S19:258-283
	Lower Whakapapa	Otamawairua Stream	From the confluence with the Whakapapa River at approx NZMS 260 S19:195-324 to source
	Piopotea	Piopotea Stream	From the confluence with the Whakapapa River at approx NZMS 260 S19:174-356 to source
		Makaretu Stream	From the confluence with the Piopotea Stream at approx NZMS 260 S19:172-284 to source
		Pukerimu Stream	From the confluence with the Piopotea Stream at approx NZMS 260 S19:168-285 to source
		Tepure Stream	From the confluence with the Piopotea Stream at approx NZMS 260 S19:159-327 to approx S19:198-270

Management Zone	Sub-zone	River/Stream Name	Reference
		Unnamed Tributary of the Tepure Stream	From the confluence with the Tepure Stream at approx NZMS 260 S19:181-299 to source
	Pungapunga	Pungapunga River	From the confluence with the Whanganui River at approx NZMS 260 S18:124-544 to source
		Waituhi Stream	From the confluence with the Pungapunga River at approx NZMS 260 S18:278-592 to approx T18:301-587
		Pungapunga River Tributary	From the confluence with the Pungapunga River at approx NZMS 260 S18:261-580 to source
		Hauwai Stream	From the confluence with the Pungapunga River at approx NZMS 260 S18:239-573 to source
		Whangapuoto Stream	From the confluence with the Pungapunga River at approx NZMS 260 S18:165-542 to source
		Upper Ongarue	Unnamed Tributary of the Ongarue River
	Okauaka Stream		From the confluence with the Ongarue River at approx NZMS 260 S17:187-865 to source
	Kahoho Stream		From the confluence with the Waimiha Stream at approx NZMS 260 T17:310-965 to source
	Waimiha Stream		From the confluence with the Ongarue River at approx NZMS 260 S17:132-862 to source
	Matramataha River		From the confluence with the Ongarue River at approx NZMS 260 S17:116-806 to Source
	Unnamed Tributary of the Matramataha River		From the confluence with the Matramataha River at approx NZMS 260 S18:273-793 to source
	Piropiro Stream		From the confluence with the Matramataha River at approx NZMS 260 S17:251-804 to source
	Te Rerengaohoro Stream		From the confluence with the Matramataha River at approx NZMS 260 S18:238-807 to approx S18:239-802
	Waione Stream		From the confluence with the Ongarue River at approx NZMS 260 S18:118-799 to source
	Mangatukutuku Stream		From the confluence with the Waione Stream at approx NZMS 260 S18:127-796 to source
	Waikoura Stream		From the confluence with the Mangatukutuku Stream at approx NZMS 260 S18:174-761 to source
	Upper and Lower Ongarue	Ongarue River	From the confluence with the Mangakahu Stream at approx NZMS 260 S18:087-736 to source
	Lower Ongarue	Mangakahu Stream	From the confluence with the Ongarue River at approx NZMS 260 S18:087-736 to source



Management Zone	Sub-zone	River/Stream Name	Reference
		Otataka Stream	From the confluence with the Mangakahu Stream at approx NZMS 260 S18:182-701 to source
		Unnamed Tributary	From the confluence with the Mangakahu Stream at approx NZMS 260 S18:143-729 to source
		Kakimotu Stream	From the confluence with the Mangakahu Stream at approx NZMS 260 S18:140-729 to source
		Uepango Stream	From the confluence with the Ongarue River at approx NZMS 260 S18:053-683 to source
		Taringamotu River	From the confluence with the Ongarue River at approx NZMS 260 S18:047-582 to source
		Unnamed Tributary of the Taringamotu River	From the confluence with the Taringamotu River at approx NZMS 260 S18:243-631 to source
		Unnamed Tributary of the Taringamotu River	From the confluence with the Taringamotu River at approx NZMS 260 S18:229-618 to source
		Tutaeti Stream	From the confluence with the Taringamotu River at approx NZMS 260 S18:205-598 to source
		Maraetohu Stream	From the confluence with the Taringamotu River at approx NZMS 260 S18:190-593
		Unnamed Tributary of the Taringamotu River	From the confluence with the Taringamotu River at approx NZMS 260 S18:154-611 to source
		Wharariki Stream	From the confluence with the Taringamotu River at approx NZMS 260 S18:143-613 to source
		Upokomatu Stream	From the confluence with the Taringamotu River at approx NZMS 260 S18:110-626 to source
		Te Tomo Stream	From the confluence of the Upokomatu Stream at approx NZMS 260 S18:157-664 to source
		Piawa Stream	From the confluence of the Upokomatu Stream at approx NZMS 260 S18:115-635 to source
		Ngakonui Stream	From the confluence with the Taringamotu River at approx NZMS 260 S18:101-622
Middle Whanganui	Retaruke	Retaruke River	From the confluence with the Kaitieke Stream at approx NZMS 260 S19:041-326 to source
Pipiriki	Upper/Lower Manganui O Te Ao	Manganui O Te Ao River	From the confluence with the Whanganui River at approx NZMS 260 R20:860-979 to source
	Upper Manganui O Te Ao	Makatote River	From the confluence with the Manganui O Te Ao River at approx NZMS 260 S20:128-119 to S20:201-129
	Lower Manganui O Te Ao	Otautoha Stream	From the confluence with the Manganui O Te Ao River at approx NZMS 260 S20:026-067 to approx S20:156-063

Management Zone	Sub-zone	River/Stream Name	Reference
Upper Whangaehu	Waitangi	Waitangi Stream and Tributaries	From the confluence with the Whangaehu River at approx NZMS 260 T21:315-888 to source
	Tokiahuru	Omarae Stream	From confluence with the Waitaiki Stream at approx NZMS 260 S20:265-921 to source
		Waitaiki Stream	From confluence with the Tokiahuru Stream at approx NZMS 260 S21:235-880 to approx S20:273-929
		Tokiahuru Stream	From the confluence with the Whangaehu River at approx NZMS 260 S21:218-865 to approx T20:334-956
Lower Whangaehu	Upper and Lower Makotuku	Makotuku River and Tributaries	From the confluence with the Mangawhero River at approx NZMS 260 S20:079-902 to source
	Upper Mangawhero	Mangawhero River	From the confluence with the Makotuku River at approx NZMS 260 S20:079-902 to source
		Mangateitei Stream	From the confluence with the Mangawhero River at approx NZMS 260 S20:158-961 to source
		Taonui Stream	From the confluence with the Mangawhero River at approx NZMS 260 S20:121-956 to approx S20:159-020
		Makaranui Stream	From the confluence with the Mangawhero River at approx NZMS 260 S20:116-953 to approx S20:165-932
Ohau River	Upper Ohau	Makahika Stream and Tributaries	From the confluence with the Ohau River at approx NZMS 260 S25:090-585 to source
		Makaretu Stream and Tributaries	From the confluence with the Ohau River at approx NZMS 260 S25:083-579 to source
	Lower Ohau	Makorokio Stream and Tributaries	From the confluence with Ohau River at approx NZMS 260 S25:018-563 to source



**Map D:18** Aesthetics Value in the Manawatu-Wanganui Region

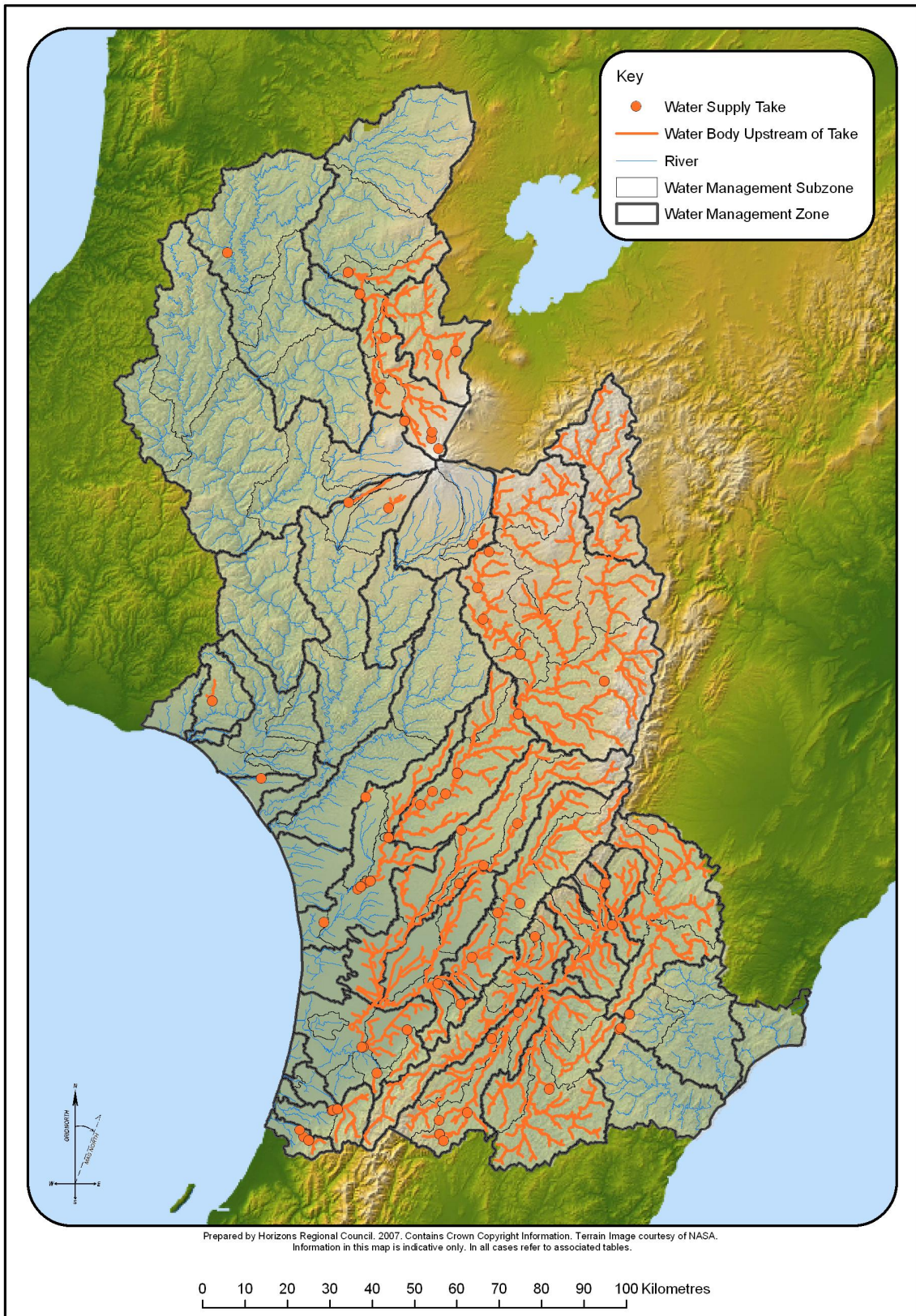
**Table D.12:** Aesthetics Value in the Manawatu-Wanganui Region

Management Zone	Sub zone	River/Stream Name	Description	Characteristics/Values
<b>Tiraumea</b>	Makuri	Makuri River and Tributaries	From the confluence with the Tiraumea River at approx NZMS 260 T24:569-771 to source	Recreational values, visual and scenic characteristics - particularly its deeply entrenched gorge downstream of Makuri township and the adjacent Scenic Reserve. Ecological significance – particularly as a fisheries and wildlife habitats and Recognised protection – Local Water Conservation Notice
<b>Mangatainoka</b>	Upper, Middle and Lower Mangatainoka, Makakahi and Mangaramarama	Mangatainoka River and Tributaries	From the confluence with the Tiraumea River at approx NZMS 260 T24:558-856 to source	Recreational values – particularly as an important trout fishery, and Recognised protection – Local Water Conservation Notice
<b>Upper Gorge, Middle Manawatu</b>	Upper Gorge and Middle Manawatu	Manawatu River	From the confluence with the Pohangina River at approx NZMS 260 T24:449-966 to the Ballance bridge at approx T24:494-926	Visual and scenic characteristics Geological feature – provided by being the only river in New Zealand to drain both east and west of the main divide.
<b>Middle Manawatu</b>	Upper, Middle and Lower Pohangina	Pohangina River and Tributaries	From the confluence with the Manawatu River at approx NZMS 260 T24:449-966 to source	Visual and scenic characteristics - particularly the river and valley landscape.
<b>Oroua</b>	Upper Oroua River	Oroua River and Tributaries	From the confluence with the Mangaoira Stream at approx NZMS 260 T22:577-379 to source	Visual and scenic characteristics - particularly its riparian margins, Recreational values
<b>Upper Rangitikei</b>	Upper Rangitikei	Rangitikei River and Tributaries	From the confluence with the Makahikatoa Stream at approx NZMS 260 U24:725-888 to source	Recreational values, Ecological significance – Wildlife habitat and fisheries, Visual and scenic characteristics particularly its gorges, terrace formations and high bluffs and Recognised protection – National Water Conservation (Rangitikei River) Order 1993.
<b>Middle Rangitikei</b>	Pukeokahu - Mangaweka	Whakaurekou River and Tributaries	From the confluence with the Rangitikei River at approx NZMS 260 U21:712-691 to source	Recreational value - particularly as a brown trout fishery, Visual and scenic characteristics particularly the deeply entrenched river and steep gorge and; Recognise protection – Local Water Conservation Notice
		Kawhatau River and Tributaries	From the confluence with the Rangitikei River at approx NZMS 260 T22:504-551 to source	
	Upper Hautapu	Hautapu River and Tributaries	From the confluence with the Oraukura Stream at approx NZMS 260 T21:510-670 to source	
<b>Middle and Lower</b>	Middle Rangitikei,	Rangitikei River	From the Mangarere Bridge at approx NZMS 260	Recreational values, Ecological significance –

Management Zone	Sub zone	River/Stream Name	Description	Characteristics/Values
Rangitikei	Pukeokahu – Mangaweka and Lower Rangitikei		T22:483-496 to the confluence with the Makahikatoa Stream at approx U24:725-888	Wildlife habitat and fisheries, Visual and scenic characteristics particularly its gorges, terrace formations and high bluffs and Recognised protection – National Water Conservation (Rangitikei River) Order 1993.
Upper Whanganui, Cherry Grove, Te Maire, Middle Whanganui, Pipiriki, Paetawa and Lower Whanganui	Upper Whanganui, Cherry Grove, Te Maire, Middle Whanganui, Pipiriki, Paetawa and Lower Whanganui	Whanganui River	The Whanganui River and catchment upstream of Aramoana at approx NZMS 260 S22:933-510 to source	Visual and scenic characteristics particularly the gorge landscapes and papa rock formations.
Cherry Grove	Upper and Lower Whakapapa Catchment	Whakapapa River and Tributaries	From confluence with the Whanganui River at approx NZMS 260 S19:189-496 to source.	Visual and scenic characteristics and Recreational Values and Ecological significance – particularly in providing a habitat for blue duck
Pipiriki	Upper Manganui o te Ao	Makatote River	From the confluence with the Manganui o te Ao River at approx NZMS 260 S20:128-120 to source	Visual and scenic characteristics – particularly its river gorges and riparian margins; and outstanding wild and scenic characteristics Ecological significance – providing a habitat for the blue duck; and wildlife and fisheries Recognised protection National Water Conservation Order
		Waimarino Stream	From the confluence with the Makatote River at approx NZMS 260 S20:129-120 to source	
		Mangaturuturu River	From the confluence with the Manganui o te Ao River at approx NZMS 260 S20:057-067 to source	
	Lower Manganui o te Ao	Orautoha Stream	From the confluence with the Manganui o te Ao River at approx NZMS 260 S20:026-067 to source	
	Upper and Lower Manganui o te Ao	Manganui o Te Ao River	From the confluence with the Whanganui River at approx NZMS 260 R20:861-979 to source	



### Water Use Values



**Map D:19** Location of Existing Surface Water Takes for Water Supply and Upstream Water bodies in the Manawatu-Wanganui Region

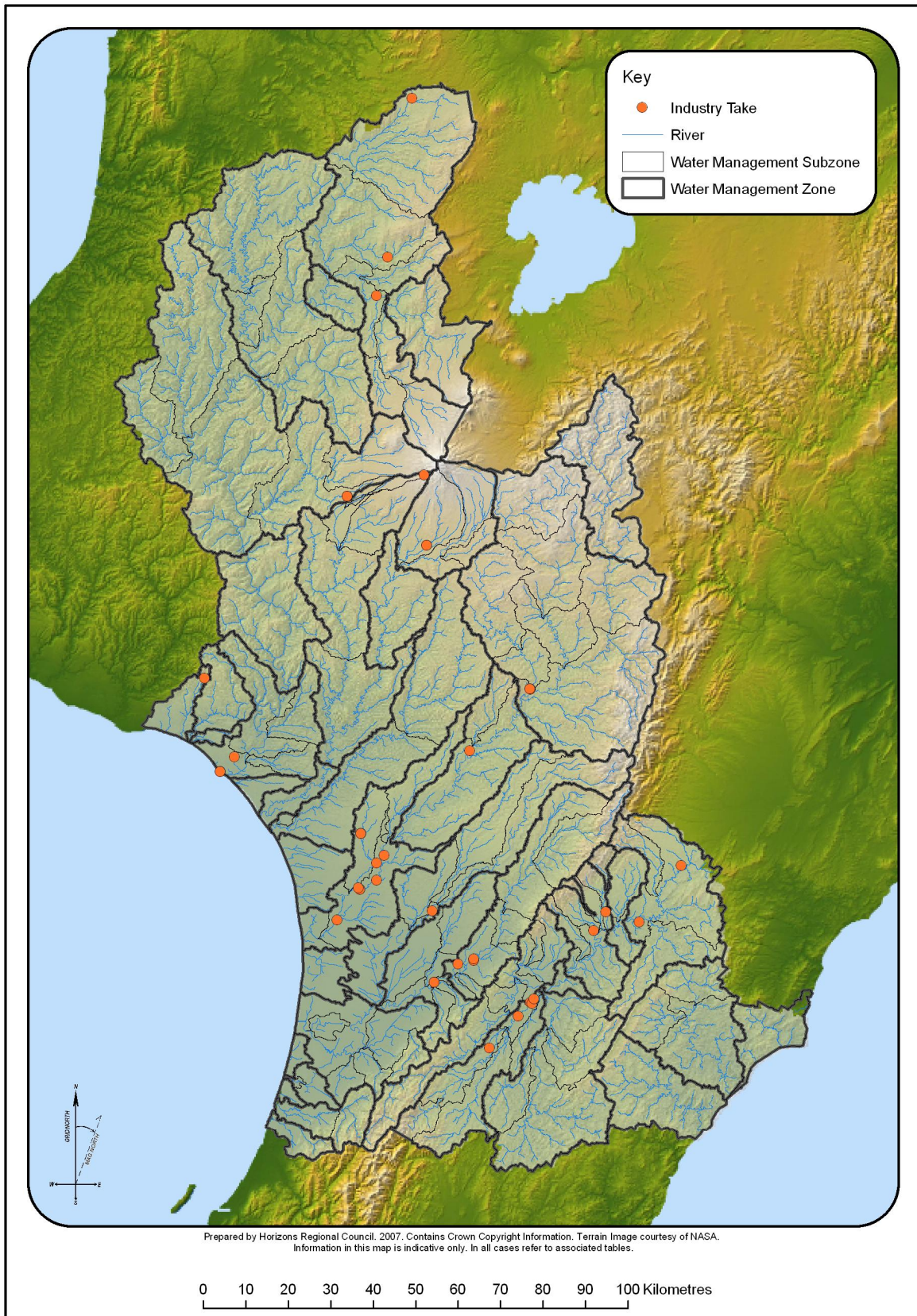


**Table D.13:** Location of Existing Surface Water Takes for Water Supply in the Manawatu – Wanganui Region

Management Zone	Sub zone	River	Description
Upper Manawatu	Upper Manawatu	Manawatu River	Including all tributaries upstream of a point at approx NZMS 260 U23:821-240
Weber-Tamaki	Weber-Tamaki	Manawatu River	Including all tributaries upstream of a point at approx NZMS 260 U23:726-013
Upper Tamaki	Upper Tamaki	Tamaki River	Including all tributaries upstream of a point at approx NZMS 260 U23:709-114
Tiraumea	Upper Tiraumea	Hirinakitu Stream	Including all tributaries upstream of a point at approx NZMS 260 T25:577-627
Mangatainoka	Middle Mangatainoka	Mangatainoka River	Including all tributaries upstream of a point at approx NZMS 260 T24:441-746
	Lower Mangatainoka	Mangatainoka River	Including all tributaries upstream of a point at approx NZMS 260 T24:504-808
	Makakahi	Makakahi River	Including all tributaries upstream of a point at approx NZMS 260 T25:318-520
			Including all tributaries upstream of a point at approx NZMS 260 T25:317-554
			Including all tributaries upstream of a point at approx NZMS 260 T25:384-572
Bruce Stream	Including all tributaries upstream of a point at approx NZMS 260 T25:328-504		
Upper Gorge	Mangapapa	Mangapapa Stream	Including all tributaries upstream of a point at approx NZMS 260 T24:543-986
Middle Manawatu	Middle Manawatu	Manawatu River	Including all tributaries upstream of a point at approx NZMS 260 T24:394-937
	Middle Pohangina	Pohangina River	Including all tributaries upstream of a point at approx NZMS 260 T23:507-063
	Lower Pohangina	Pohangina River	Including all tributaries upstream of a point at approx NZMS 260 T23:455-042
Lower Manawatu	Turitea	Turitea Stream	Including all tributaries upstream of a point at approx NZMS 260 T24:314-875
			Including all tributaries upstream of a point at approx NZMS 260 T25:368-827
Oroua	Upper Oroua	Oroua River	Including all tributaries upstream of a point at approx NZMS 260 T23:502-254
			Including all tributaries upstream of a point at approx NZMS 260 T23:422-156
			Including all tributaries upstream of a point at approx NZMS 260 T23:364-113
	Kiwitea	Kiwitea Stream	Including all tributaries upstream of a point at approx NZMS 260 T23:369-239
Coastal Manawatu	Coastal Manawatu	Manawatu River	Including all tributaries upstream of a point at approx NZMS 260 S24:134-726
	Lower Tokomaru	Tokomaru River	Including all tributaries upstream of a point at approx NZMS 260 S24:242-767
			Including all tributaries upstream of a point at approx NZMS 260 S24:138-726

Management Zone	Sub zone	River	Description
	Mangaore	Mangaore Stream	Including all tributaries upstream of a point at approx NZMS 260 S25:170-665
Middle Rangitikei	Pukeokahu - Mangaweka	Makino Stream	Including all tributaries upstream of a point at approx NZMS 260 U22:707-589
	Upper Hautapu	Hautapu River	Including all tributaries upstream of a point at approx NZMS 260 T21:407-811
		Waiouru Stream	Including all tributaries upstream of a point at approx NZMS 260 T21:420-738
	Lower Hautapu	Reporoa Stream	Including all tributaries upstream of a point at approx NZMS 260 T21:435-896
Lower Rangitikei	Lower Rangitikei	Rangitikei River	Including all tributaries upstream of a point at approx NZMS 260 T22:504-512
			Including all tributaries upstream of a point at approx NZMS 260 T22:332-324
			Including all tributaries upstream of a point at approx NZMS 260 T22:360-372
			Including all tributaries upstream of a point at approx NZMS 260 T22:301-330
			Including all tributaries upstream of a point at approx NZMS 260 S22:272-299
Coastal Rangitikei	Coastal Rangitikei	Rangitikei River	Including all tributaries upstream of a point at approx NZMS 260 S23:198-221
			Including all tributaries upstream of a point at approx NZMS 260 S23:154-118
			Including all tributaries upstream of a point at approx NZMS 260 S23:145-115
			Including all tributaries upstream of a point at approx NZMS 260 S23:132-105
			Including all tributaries upstream of a point at approx NZMS 260 S23:125-099
	Tidal Rangitikei	Flockhouse Drain No 1	Including all tributaries upstream of a point at approx NZMS 260 S23:045-019
Tutaenui	Tutaenui Stream	Including all tributaries upstream of a point at approx NZMS 260 S22:144-137	
Upper Whanganui	Upper Whanganui	Te Whaiarau Stream	Including all tributaries upstream of a point at approx NZMS 260 T19:357-369
		Mangatepopo Stream	Including all tributaries upstream of a point at approx NZMS 260 T19:313-361
Cherry Grove	Cherry Grove	Whanganui River	Including all tributaries upstream of a point at approx NZMS 260 S18:130-504
			Including all tributaries upstream of a point at approx NZMS 260 S18:102-556
	Upper Whakapapa	Makahikatoa Stream	Including all tributaries upstream of a point at approx NZMS 260 T20:316-138
			Including all tributaries upstream of a point at approx NZMS 260 T20:300-177
			Waipuna Stream
		Mangahuia Stream	Including all tributaries upstream of a point at approx NZMS 260 S19:236-205
Lower Whakapapa	Whakapapa River	Including all tributaries upstream of a point at approx NZMS 260 S19:190-402	

Management Zone	Sub zone	River	Description
	Piopiotea	Piopiotea Stream	Including all tributaries upstream of a point at approx NZMS 260 S19:178-283
<b>Middle Whanganui</b>	Upper Ohura	Mangaparare Stream	Including all tributaries upstream of a point at approx NZMS 260 R18:817-602
<b>Upper Whangaehu</b>	Waitangi	Waitangi Stream	Including all tributaries upstream of a point at approx NZMS 260 T20:397-914
<b>Lower Whangaehu</b>	Upper Makotuku	Makotuku River	Including all tributaries upstream of a point at approx NZMS 260 S20:103-012
	Upper Mangawhero	Mangawhero River	Including all tributaries upstream of a point at approx NZMS 260 S20:198-999
<b>Ohau</b>	Upper Ohau	Ohau River	Including all tributaries upstream of a point at approx NZMS 260 S25:077-580
	Lower Ohau	Ohau River	Including all tributaries upstream of a point at approx NZMS 260 S25:064-577
			Including all tributaries upstream of a point at approx NZMS 260 S25:066-578
<b>Akitio</b>	Waihi	Waihi Stream	Including all tributaries upstream of a point at approx NZMS 260 U24:746-771
			Including all tributaries upstream of a point at approx NZMS 260 U24:743-768
		Waipuehu Stream	Including all tributaries upstream of a point at approx NZMS 260 U24:766-804
<b>Kai Iwi</b>	Kai Iwi	Karamu Stream	Including all tributaries upstream of a point at approx NZMS 260 R22:781-543
<b>Kaitoke Lakes</b>	Kaitoke Lakes	Lake Kaitoke	Including all tributaries upstream of a point at approx NZMS 260 R22:897-361
<b>Waikawa</b>	Waikawa	Waikawa Stream	Including all tributaries upstream of a point at approx NZMS 260 S25:009-506
			Including all tributaries upstream of a point at approx NZMS 260 S25:997-514
			Including all tributaries upstream of a point at approx NZMS 260 S25:998-531

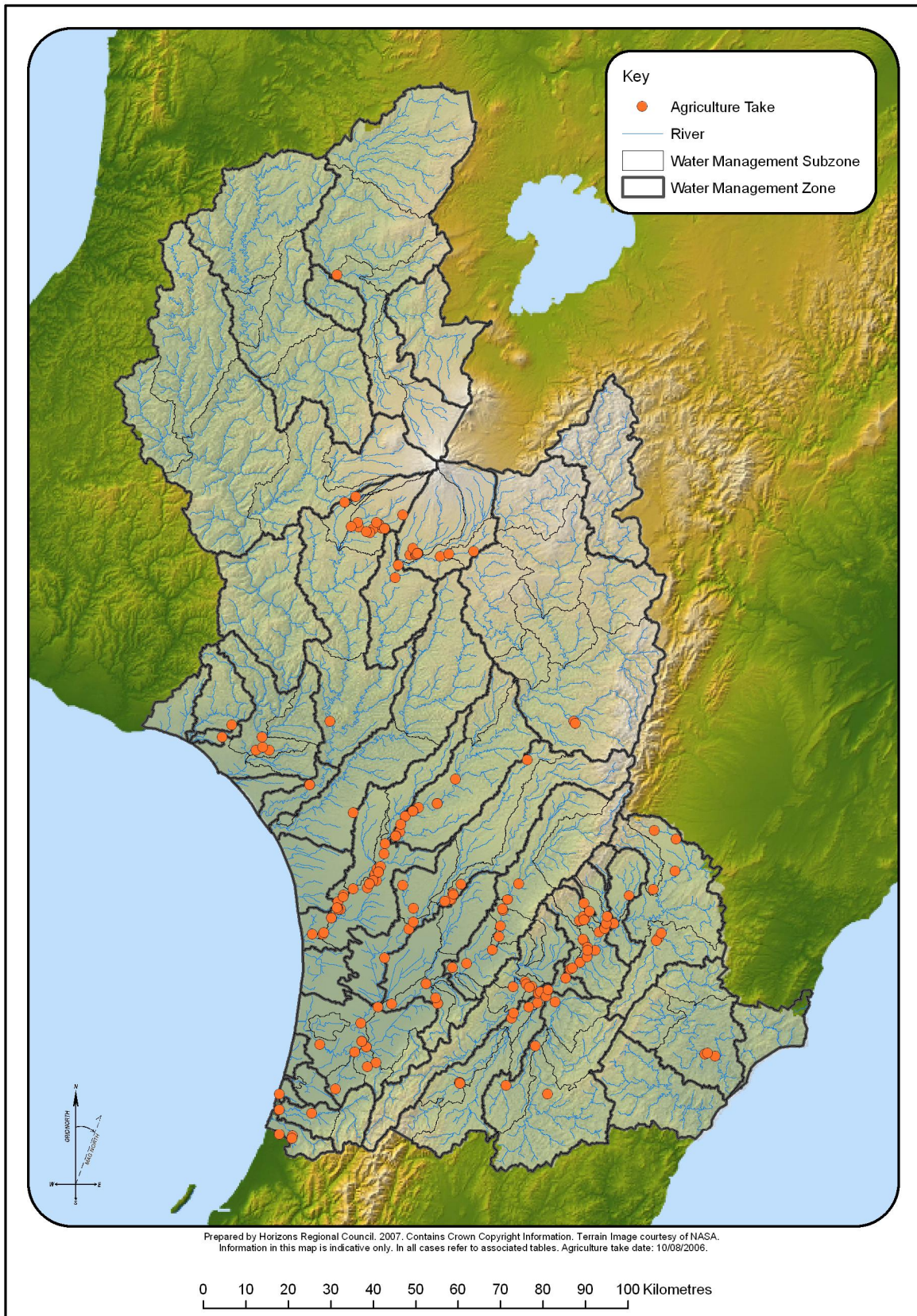


**Map D:20** Location of Existing Surface Water Takes for Industry in the Manawatu-Wanganui Region

**Table D.14:** Location of Existing Surface Water Takes for Industry in the Manawatu-Wanganui Region

Management Zone	Sub zone	River	Description
Upper Manawatu	Upper Manawatu	Mangarangiara Stream	At approx NZMS 260 U24:885-158
		Manawatu River	At approx NZMS 260 U23:785-023
Tamaki-Hopelands	Tamaki-Hopelands	Manawatu River	At approx NZMS 260 T23:678-003
	Lower Tamaki	Tamaki River	At approx NZMS 260 U23:707-047
Mangatainoka	Middle Mangatainoka	Artificial Lake on Tutaekara Road	At approx NZMS 260 T24:433-726
	Lower Mangatainoka	Mangatainoka River	At approx NZMS 260 T24:533-831
			At approx NZMS 260 T24:529-833
			At approx NZMS 260 T24:500-801
Middle Manawatu	Middle Manawatu	Manawatu River	At approx NZMS 260 T24:537-842
			At approx NZMS 260 T24:395-936
			At approx NZMS 260 T24:395-932
Lower Manawatu	Lower Manawatu	Manawatu River	At approx NZMS 260 T24:359-924
			At approx NZMS 260 T24:302-881
Oroua	Middle Oroua	Oroua River	At approx NZMS 260 S23:298-049
Middle Rangitikei	Pukeokahu - Mangaweka	Rangitikei River	At approx NZMS 260 T22:529-572
			At approx NZMS 260 T22:528-573
Lower Rangitikei	Lower Rangitikei	Rangitikei River	At approx NZMS 260 T22:386-427
Coastal Rangitikei	Coastal Rangitikei	Rangitikei River	At approx NZMS 260 S23:184-182
			At approx NZMS 260 S23:166-164
			At approx NZMS 260 S23:167-123
			At approx NZMS 260 S23:127-102
			At approx NZMS 260 S23:124-105
	At approx NZMS 260 S23:073-028		
Cherry Grove	Tutaenui	Tutaenui Stream	At approx NZMS 260 S23:129-233
	Cherry Grove	Whanganui River	At approx NZMS 260 S18:167-502
	Upper Ongarue	Waimiha Stream	At approx t NZMS 260 S17:250-968
Pipiriki	Lower Manganui O Te Ao	Hoihenga Stream	At approx NZMS 260 S18:193-592
			At approx NZMS 260 S20:097-029
Lower Whanganui	Coastal Whanganui	Whanganui River	At approx NZMS 260 R22:831-413
			At approx NZMS 260 R22:798-378
Upper Whangaehu	Tokiahuru	Tokiahuru Stream	At approx NZMS 260 S20:284-913
Lower Whangaehu	Upper Mangawhero	Mangawhero River	At approx NZMS 260 S20:279-079
Northern Coastal	Northern Coastal	Okehu Stream	At approx NZMS 260 R22:761-598





**Map D:21** Location of Existing Surface Water Takes for Agricultural Use in the Manawatu-Wanganui Region



**Table D.15:** Location of Existing Surface Water Takes for Agricultural Use in the Manawatu-Wanganui Region

Management Zone	Sub zone	River	Number of Consents	Description
Upper Manawatu	Upper Manawatu	Manawatu River	1	At approx NZMS 260 U23:821-240
			1	At approx NZMS 260 U23:873-220
		Makotuku Stream	1	At approx NZMS 260 U23:870-145
	Mangatewainui	Mangatewainui Stream	1	At approx NZMS 260 U23:819-102
	Mangatoro	Mangatoro Stream	1	At approx NZMS 260 U24:826-979
			1	At approx NZMS 260 U24:831-985
1			At approx NZMS 260 U24:838-997	
Weber-Tamaki	Weber-Tamaki	Manawatu River	1	At approx NZMS 260 U23:726-020
	Mangatera	Whakaruatapu Stream	1	At approx NZMS 260 U23:762-086
Upper Kumeti	Upper Kumeti	Kumeti Stream	1	At approx NZMS 260 T23:669-048
Tamaki-Hopelands	Tamaki-Hopelands	Manawatu River	1	At approx NZMS 260 T24:646-928
			1	At approx NZMS 260 T24:662-941
			1	At approx NZMS 260 T24:691-999
			1	At approx NZMS 260 T24:682-956
			1	At approx NZMS 260 T24:623-912
			1	At approx NZMS 260 T24:623-9142
	Lower Tamaki	Tamaki River	1	At approx NZMS 260 U23:708-019
			1	At approx NZMS 260 U23:710-036
	Lower Kumeti	Otamarahu Stream	1	At approx NZMS 260 U23:704-007
		Kumeti Stream	1	At approx NZMS 260 T23:656-067
	Oruakeretaki	Oruakeretaki Stream	1	At approx NZMS 260 T23:656-028
			1	At approx NZMS 260 T23:645-027
		Mangapuka Kakahu Stream	1	At approx NZMS 260 T23:659-031
			1	At approx NZMS 260 T23:654-036
	Raparapawai	Raparapawai	1	At approx NZMS 260 T24:656-979
			1	At approx NZMS 260 T24:653-983
1			At approx NZMS 260 T24:664-964	
1			At approx NZMS 260 T24:664-956	
Hopelands-Tiraumea	Hopelands-Tiraumea	Manawatu River	1	At approx NZMS 260 T24:613-891
			1	At approx NZMS 260 T24:571-863
Tiraumea	Upper Tiraumea	Tiraumea River	1	At approx NZMS 260 T24:541-731
		Black Creek	1	At approx NZMS 260 T25:569-618
	Lower Tiraumea	Tiraumea River	1	At approx NZMS 260 T24:566-848
			1	At approx NZMS 260 T24:587-835
			2	At approx NZMS 260 T24:553-859
Mangaone River	Black Creek	1	At approx NZMS 260 T25:472-638	
Mangatainoka	Middle Mangatainoka	Mangatainoka River	1	At approx NZMS 260 T25:362-645
			1	At approx NZMS 260 T25:363-642
	Lower Mangatainoka	Mangatainoka River	1	At approx NZMS 260 T24:548-855
		Avery Road Stream	1	At approx NZMS 260 T24:485-796
	Mangaramarama	Mangaramarama Creek	1	At approx NZMS 260 T24:490-808
			1	At approx NZMS 260 T24:545-832
Upper Gorge	Upper Gorge	Manawatu River	1	At approx NZMS 260 T24:532-872
			1	At approx NZMS 260 T24:517-882
			1	At approx NZMS 260 T24:520-876
			1	At approx NZMS 260 T24:527-869
	Lower Mangahao	Mangahao River	1	At approx NZMS 260 T24:488-870
Middle Manawatu	Middle Manawatu	Manawatu River	1	At approx NZMS 260 T24:379-925
			1	At approx NZMS 260 T24:439-957
			1	At approx NZMS 260 T24:345-916
	Middle Pohangina	Pohangina River	1	At approx NZMS 260 T23:465-050

Management Zone	Sub zone	River	Number of Consents	Description
	Lower Pohangina	Pohangina River	1	At approx NZMS 260 T23:501-115
			1	At approx NZMS 260 T23:475-077
			1	At approx NZMS 260 T23:463-054
			1	At approx NZMS 260 T24:455-989
			1	At approx NZMS 260 T23:459-014
Lower Manawatu	Lower Manawatu	Manawatu River	1	At approx NZMS 260 S24:202-830
			1	At approx NZMS 260 S24:170-823
	Kahuterawa	Kahuterawa Stream	1	At approx NZMS 260 T24:311-831
		Kara Creek	1	At approx NZMS 260 T24:306-844
Lower Mangaone Stream	Mangaone Stream	1	At approx NZMS 260 S24:283-878	
Oroua	Upper Oroua	Oroua River	1	At approx NZMS 260 T23:347-092
			1	At approx NZMS 260 T23:343-075
			1	At approx NZMS 260 T23:341-077
			1	At approx NZMS 260 T23:366-114
			1	At approx NZMS 260 T23:348-089
	Lower Oroua	Oroua River	1	At approx NZMS 260 S24:185-938
			Kiwitea	Kiwitea Stream
	Makino	Mangaone West Stream	1	At approx NZMS 260 S23:254-055
			1	At approx NZMS 260 S23:228-111
			1	At approx NZMS 260 S23:243-006
		Makino Stream	1	At approx NZMS 260 S23:254-023
Coastal Manawatu	Coastal Manawatu	Manawatu River	1	At approx NZMS 260 S24:129-785
			1	At approx NZMS 260 S24:132-741
			1	At approx NZMS 260 S24:115-717
			1	At approx NZMS 260 S24:033-735
	Lower Tokomaru	Tokomaru River	2	At approx NZMS 260 S24:143-729
	Mangaore	Mangaore Stream	1	At approx NZMS 260 S25:165-691
Koputaroa	Koputaroa Stream	1	At approx NZMS 260 S25:070-630	
Middle Rangitikei	Pukeokahu - Mangaweka	Kawhatau River	1	At approx NZMS 260 T22:631-496
			1	At approx NZMS 260 T22:635-492
Lower Rangitikei	Lower Rangitikei	Rangitikei River	1	At approx NZMS 260 S23:265-294
			1	At approx NZMS 260 S23:235-273
			1	At approx NZMS 260 S23:221-236
			1	At approx NZMS 260 S23:212-227
			1	At approx NZMS 260 S23:224-255
			1	At approx NZMS 260 T22:310-303
			1	At approx NZMS 260 S23:212-227
			1	At approx NZMS 260 T22:353-361
			1	At approx NZMS 260 S23:252-285
Coastal Rangitikei	Coastal Rangitikei	Rangitikei River	1	At approx NZMS 260 S23:089-089
			1	At approx NZMS 260 S23:076-071
			1	At approx NZMS 260 S23:145-105
			1	At approx NZMS 260 S23:167-122
			1	At approx NZMS 260 S23:163-138
			1	At approx NZMS 260 S24:040-995
			1	At approx NZMS 260 S23:168-149
			1	At approx NZMS 260 S23:088-083
			1	At approx NZMS 260 S23:082-053
			1	At approx NZMS 260 S23:176-155
			1	At approx NZMS 260 S23:158-122
			1	At approx NZMS 260 S23:075-055

Management Zone	Sub zone	River	Number of Consents	Description	
			1	At approx NZMS 260 S23:076-053	
			1	At approx NZMS 260 S23:073-056	
			1	At approx NZMS 260 S23:171-142	
			1	At approx NZMS 260 S23:111-103	
			1	At approx NZMS 260 S24:042-998	
			1	At approx NZMS 260 S23:150-115	
			1	At approx NZMS 260 S23:187-209	
			1	At approx NZMS 260 S23:184-185	
			1	At approx NZMS 260 S23:060-032	
	Tidal Rangitikei	Rangitikei River	1	At approx NZMS 260 S24:015-995	
	Tutaenui	Tutaenui Stream	1	At approx NZMS 260 S23:112-282	
<b>Cherry Grove</b>	Cherry Grove	Whanganui River	1	At approx NZMS 260 S18:074-551	
<b>Lower Whanganui</b>	Lower Whanganui	Whanganui River	1	At approx NZMS 260 R22:898-436	
		Waireka Stream	1	At approx NZMS 260 R22:897-459	
		Mateongaonga Stream	1	At approx NZMS 260 R22:883-429	
		Mangamoku Stream	1	At approx NZMS 260 S22:914-429	
<b>Upper Whangaehu</b>	Waitangi	Waitangi Stream	1	At approx NZMS 260 T21:317-887	
			1	At approx NZMS 260 T21:337-893	
		Makiokio Stream	1	At approx NZMS 260 T21:395-898	
	Tokiahuru	Tokiahuru Stream		1	At approx NZMS 260 S21:245-890
				1	At approx NZMS 260 S21:258-890
				1	At approx NZMS 260 S21:261-891
				1	At approx NZMS 260 S21:264-894
				1	At approx NZMS 260 S21:263-894
				1	At approx NZMS 260 S21:218-866
	Waitaki Stream	1	At approx NZMS 260 S20:252-906		
<b>Middle Whangaehu</b>	Middle Whangaehu	Rangiwahia Stream	1	At approx NZMS 260 S21:211-836	
<b>Lower Whangaehu</b>	Lower Whangaehu	Mangawhero River	1	At approx NZMS 260 S22:057-497	
	Lower Makotuku	Little Makara Stream	1	At approx NZMS 260 S20:091-014	
		Makara Stream	1	At approx NZMS 260 S20:118-027	
	Upper Mangawhero	Mangawhero River		1	At approx NZMS 260 S20:107-957
				1	At approx NZMS 260 S20:158-951
				1	At approx NZMS 260 S20:167-966
				1	At approx NZMS 260 S20:173-962
				1	At approx NZMS 260 S20:125-956
			Taonui Stream	1	At approx NZMS 260 S20:122-967
		Mangaeteitei Stream		1	At approx NZMS 260 S20:178-953
				1	At approx NZMS 260 S20:187-952
				1	At approx NZMS 260 S20:186-952
			Makaranui Stream	1	At approx NZMS 260 S20:151-952
		1	At approx NZMS 260 S20:143-945		
	Colins Creek	1	At approx NZMS 260 S20:229-984		
<b>Coastal Whangaehu</b>	Coastal Whangaehu	Whangaehu River	1	At approx NZMS 260 S22:009-347	
<b>Ohau</b>	Lower Ohau	Ohau River	1	At approx NZMS 260 S25:014-572	
			1	At approx NZMS 260 S25:937-581	
<b>Akitio</b>	Lower Akitio	Akitio River	1	At approx NZMS 260 U24:940-712	
			1	At approx NZMS 260 U24:964-707	
			1	At approx NZMS 260 U24:947-714	
<b>Kai Iwi</b>	Kai Iwi	Katikara Stream	1	At approx NZMS 260 R22:825-488	
<b>Mowhanau</b>	Mowhanau	Omapu Stream	1	At approx NZMS 260 R22:803-459	
<b>Lake Papaitonga</b>	Lake Papaitonga	Lake Papaitonga	1	At approx NZMS 260 S25:938-617	

Management Zone	Sub zone	River	Number of Consents	Description
Waikawa	Waikawa	Waikawa Stream	1	At approx NZMS 260 S25:938-521
		Manukau Stream	1	At approx NZMS 260 S25:968-517
			1	At approx NZMS 260 S25:967-511

## Water Quality Standards for stream and rivers in Water Management Sub-zones

**Table D.16:** The Water quality standards defined in Table 2 shall be read as follows (The numerical values in are indicated by [...])

Column		Standard spelt out
Header	Sub-header	
pH	Range	The pH of the water shall be within the range [...] to [...]
	Δ	The pH of the water shall not be changed by more than [...]
Temp (°C)	<	The temperature of the water shall not exceed [...] degrees Celsius.
	Δ	The temperature of the water shall not be changed by more than [...]degrees Celsius.
DO (%SAT)	<	The concentration of dissolved oxygen shall exceed [...] % of saturation
BOD <sub>5</sub> (g/m <sup>3</sup> )	<	The five-days biological oxygen demand shall not exceed [...] grams per cubic metre.
POM (g/m <sup>3</sup> )	<	The concentration of particulate organic matter shall not exceed [...] grams per cubic metre.
Periphyton	Chla (mg/m <sup>2</sup> )	The algal biomass on the stream or river bed shall not exceed [...] milligrams of chlorophyll a per square metre.
	% cover	The maximum cover of visible stream or river bed by periphyton (as filamentous algae more than 2 centimetres long) shall not exceed [...]%
DRP (mg/m <sup>3</sup> )	<	The annual average concentration of dissolved reactive phosphorus when the river flow is at or below three times the median flow shall not exceed [...] milligrams per cubic meter, unless natural levels already exceed this standard.
SIN (mg/m <sup>3</sup> )	<	The annual average concentration of soluble inorganic nitrogen when the river flow is at or below three times the median flow shall not exceed [...] milligrams per cubic meter.
QMCI		The quantitative macroinvertebrate index shall exceed [...], unless natural physical conditions are beyond the scope of application of the QMCI.
Ammonia (mg/m <sup>3</sup> )	<	The concentration of ammonia nitrogen shall not exceed [...] milligrams per cubic meter.
Toxicants	<	For toxicants not otherwise defined in these standards, the concentration of toxicants in the water shall not exceed the trigger values defined in the 2000 ANZECC guidelines Table 3.4.1 with the level of protection of [...] % of species.
Turbidity (NTU)	< ½ m	The turbidity of the water when the river flow is at or below <u>half median flow</u> shall not exceed [...] Nephelometric Turbidity Units (NTU)
	<m	The turbidity of the water when the river flow is at or below <u>median flow</u> shall not exceed [...] Nephelometric Turbidity Units (NTU)
	<3 x m	The turbidity of the water when the river flow is at or below <u>three times median flow</u> shall not exceed [...] Nephelometric Turbidity Units (NTU)
	Δ	The turbidity of the water shall not be changed by more than [...] %. This standard shall apply only when physical conditions existing at the site prevent adequate water clarity (back Disc) measurement.
Clarity (m)	Δ	The clarity of the water measured as being the horizontal sighting range of a 200 mm black disc shall not be changed by more than [...] %

Note: Soluble Inorganic Nitrogen (SIN) concentration is measured of the sum of nitrate nitrogen, nitrite nitrogen and ammonia nitrogen

**Table D.17:** Water quality standards for rivers and streams in each Water Management Sub-zone (Note: refer to and for water quality standards applying to rivers and streams flowing into natural lakes)

Management Zone	Sub zone	pH		Temp (°C)		DO (%SAT)	BOD <sub>5</sub> (g/m <sup>3</sup> )	POM (g/m <sup>3</sup> )	Periphyton		DRP (mg/m <sup>3</sup> )	SIN (mg/m <sup>3</sup> )	QMCI	Ammonia (mg/m <sup>3</sup> )	Tox.	Turbidity (NTU)				Clarity (m)	
		Range	Δ	<	Δ	>	<	<	Chla (mg/m <sup>2</sup> )	% cover	<	<		<		<	<1/2 m	< m	< 3 xm	Δ	Δ
Upper Manawatu (Mana_1)	Upper Manawatu (Mana_1a)	7 to 8.5	0.5	19	3	80	1	2.5	120	30	10	167	6	400	99	1		15	20	20	
	Mangatewainui (Mana_1b)	7 to 8.5	0.5	19	3	80	1	2.5	120	30	10	167	6	400	99	1		15	20	20	
	Mangatoro (Mana_1c)	7 to 8.5	0.5	19	3	80	1	2.5	120	30	10	110	6	400	99	1		20	20	20	
Weber-Tamaki (Mana_2)	Weber-Tamaki (Mana_2a)	7 to 8.5	0.5	19	2	80	1	2.5	120	30	10	444	6	400	99	1		15	20	20	
	Mangatera (Mana_2b)	7 to 8.5	0.5	22	3	70	2	5	120	30	10	444	5	400	99			15	30	30	
Upper Tamaki (Mana_3)	Upper Tamaki	7 to 8.2	0.5	19	2	80	1	2.5	50	30	6	70	6	320	99			5	20	20	
Upper Kumeti (Mana_4)	Upper Kumeti	7 to 8.2	0.5	19	2	80	1	2.5	50	30	6	70	6	320	99			5	20	20	
Tamaki-Hopelands (Mana_5)	Tamaki-Hopelands (Mana_5a)	7 to 8.5	0.5	19	3	80	1	2.5	120	30	10	444	6	400	99	1		15	20	20	
	Lower Tamaki (Mana_5b)	7 to 8.5	0.5	22	3	70	2	5	120	30	10	444	5	400	99			15	30	30	
	Lower Kumeti (Mana_5c)	7 to 8.5	0.5	22	3	70	2	5	120	30	10	444	5	400	99			15	30	30	
	Oruakeretaki (Mana_5d)	7 to 8.5	0.5	22	3	70	2	5	120	30	10	444	5	400	99			15	30	30	
	Raparapawai (Mana_5e)	7 to 8.5	0.5	22	3	70	2	5	120	30	10	444	5	400	99			15	30	30	
Hopelands-Tiraumea (Mana_6)	Hopelands-Tiraumea	7 to 8.5	0.5	19	3	80	1	2.5	120	30	10	444	6	400	99	1		15	20	20	
Tiraumea (Mana_7)	Upper Tiraumea (Mana_7a)	7 to 8.5	0.5	23	3	70	2	5	120	30	10	444	5	400	95	2.5	20		30	30	
	Lower Tiraumea (Mana_7b)	7 to 8.5	0.5	23	3	70	2	5	120	30	10	444	5	400	95	2.5	20		30	30	



Management Zone	Sub zone	pH		Temp (°C)		DO (%SAT)	BOD <sub>5</sub> (g/m <sup>3</sup> )	POM (g/m <sup>3</sup> )	Periphyton		DRP (mg/m <sup>3</sup> )	SIN (mg/m <sup>3</sup> )	QMCI	Ammonia (mg/m <sup>3</sup> )	Tox.	Turbidity (NTU)				Clarity (m)
		Range	Δ	<	Δ	>	<	<	Chla (mg/m <sup>2</sup> )	% cover	<	<		<		<1/2 m	< m	< 3 xm	Δ	Δ
	Mangaone River (Mana_7c)	7 to 8.5	0.5	23	3	70	2	5	200	30	10	444	5	400	95		20		30	30
	Makuri (Mana_7d)	7 to 8.5	0.5	19	2	80	1	2.5	120	30	10	110	6	400	99	1		15	20	20
Mangatainoka (Mana_8)	Upper Mangatainoka (Mana_8a)	7 to 8.2	0.5	19	2	80	1	2.5	50	30	6	70	6	320	99	1		5	20	20
	Middle Mangatainoka (Mana_8b)	7 to 8.5	0.5	19	3	80	1	2.5	120	30	10	444	6	400	99	1		15	20	20
	Lower Mangatainoka (Mana_8c)	7 to 8.5	0.5	19	3	80	1	2.5	120	30	10	444	6	400	99	1		15	20	20
	Makakahi (Mana_8d)	7 to 8.5	0.5	19	3	80	1	2.5	120	30	10	444	6	400	99	1		15	20	20
	Mangamarama (Mana_8e)	7 to 8.5	0.5	22	3	70	2	5	200	30	10	444	5	400	95		20		30	30
Upper Gorge (Mana_9)	Upper Gorge (Mana_9a)	7 to 8.5	0.5	22	3	70	2	5	120	30	10	444	5	400	95	2.5		15	30	30
	Mangapapa (Mana_9b)	7 to 8.5	0.5	22	3	70	2	5	120	30	10	444	5	400	95			15	30	30
	Mangaatua (Mana_9c)	7 to 8.5	0.5	22	3	70	2	5	120	30	10	444	5	400	95			15	30	30
	Upper Mangahao (Mana_9d)	7 to 8.2	0.5	19	2	80	1	2.5	50	30	6	167	6	320	99	2.5		5	20	20
	Lower Mangahao (Mana_9e)	7 to 8.5	0.5	22	3	70	2	5	120	30	10	444	5	400	95	2.5		15	30	30
Middle Manawatu (Mana_10)	Middle Manawatu (Mana_10a)	7 to 8.5	0.5	22	3	70	2	5	120	30	10	444	5	400	95	2.5		15	30	30
	Upper Pohangina (Mana_10b)	7 to 8.2	0.5	19	2	80	1	2.5	50	30	6	70	6	320	99	2.5		5	20	20
	Middle Pohangina (Mana_10c)	7 to 8.5	0.5	22	3	70	2	5	120	30	10	110	5	400	95	2.5		15	30	30
	Lower Pohangina (Mana_10d)	7 to 8.5	0.5	22	3	70	2	5	120	30	10	110	5	400	95	2.5		15	30	30
	Aokautere (Mana_10e)	7 to 8.5	0.5	22	3	70	2	5	120	30	10	110	5	400	95			15	30	30
Lower Manawatu (Mana_11)	Lower Manawatu (Mana_11a)	7 to 8.5	0.5	22	3	70	2	5	120	30	10	444	5	400	95	2.5		15	30	30
	Turitea (Mana_11b)	7 to 8.2	0.5	19	2	80	1	2.5	50	30	6	70	6	320	99	2.5		5	20	20

Management Zone	Sub zone	pH		Temp (°C)		DO (%SAT)	BOD <sub>5</sub> (g/m <sup>3</sup> )	POM (g/m <sup>3</sup> )	Periphyton		DRP (mg/m <sup>3</sup> )	SIN (mg/m <sup>3</sup> )	QMC1	Ammonia (mg/m <sup>3</sup> )	Tox.	Turbidity (NTU)				Clarity (m)
		Range	Δ	<	Δ	>	<	<	Chla (mg/m <sup>2</sup> )	% cover	<	<		<		<1/2 m	< m	< 3 xm	Δ	Δ
	Kahuterawa (Mana_11c)	7 to 8.2	0.5	19	2	80	1	2.5	50	30	6	70	6	320	99	2.5		5	20	20
	Upper Mangaone Stream (Mana_11d)	7 to 8.5	0.5	24	3	60	2	5	200	30	10	444	5	400	95			15	30	30
	Lower Mangaone Stream (Mana_11e)	7 to 8.5	0.5	24	3	60	2	5	200	30	10	444	5	400	95			15	30	30
	Main Drain (Mana_11f)	7 to 8.5	0.5	24	3	60	2	5	200	30	15	444	5	400	95			15	30	30
Oroua (Mana_12)	Upper Oroua (Mana_12a)	7 to 8.5	0.5	22	3	70	2	5	120	30	10	167	5	400	95	2.5		15	30	30
	Middle Oroua (Mana_12b)	7 to 8.5	0.5	22	3	70	2	5	120	30	10	444	5	400	95	2.5		15	30	30
	Lower Oroua (Mana_12c)	7 to 8.5	0.5	24	3	70	2	5	200	30	15	444	5	400	95	2.5		15	30	30
	Kiwitea (Mana_12d)	7 to 8.5	0.5	22	3	70	2	5	120	30	10	167	5	400	95			15	30	30
	Makino (Mana_12e)	7 to 8.5	0.5	24	3	70	2	5	120	30	15	444	5	400	95	2.5		15	30	30
Coastal Manawatu (Mana_13)	Coastal Manawatu (Mana_13a)	7 to 8.5	0.5	24	3	70	2	5	200	30	15	444	5	400	95	2.5		15	30	30
	Upper Tokomaru (Mana_13b)	7 to 8.2	0.5	19	2	80	1	2.5	50	30	6	70	6	320	99	2.5		5	20	20
	Lower Tokomaru (Mana_13c)	7 to 8.5	0.5	24	3	70	2	5	120	30	10	444	5	400	95	2.5		15	30	30
	Mangaore (Mana_13d)	7 to 8.5	0.5	22	3	70	2	5	120	30	10	165	5	400	95			15	30	30
	Koputaroa (Mana_13e)	7 to 8.5	0.5	24	3	60	2	5	200	30	15	444	5	400	95			15	30	30
	Foxton Loop (Mana_13f)	7 to 8.5	0.5	24	3	60	2	5	200	30	15	444	5	400	95			15	30	30
Upper Rangitikei (Rang_1)	Upper Rangitikei	7 to 8.2	0.5	19	2	80	1	2.5	50	30	6	70	6	320	99	0.6		3.5	20	20
Middle Rangitikei (Rang_2)	Middle Rangitikei (Rang_2a)	7 to 8.2	0.5	19	2	80	1	2.5	50	30	6	70	6	320	99	0.6		3.5	20	20

Management Zone	Sub zone	pH		Temp (°C)		DO (%SAT)	BOD <sub>5</sub> (g/m <sup>3</sup> )	POM (g/m <sup>3</sup> )	Periphyton		DRP (mg/m <sup>3</sup> )	SIN (mg/m <sup>3</sup> )	QMCI	Ammonia (mg/m <sup>3</sup> )	Tox.	Turbidity (NTU)				Clarity (m)
		Range	Δ	<	Δ	>	<	<	Chla (mg/m <sup>2</sup> )	% cover	<	<		<		< 1/2 m	< m	< 3 xm	Δ	Δ
	Pukeokahu – Mangaweka (Rang_2b)	7 to 8.5	0.5	19	3	80	1	2.5	120	30	10	110	6	320	99	0.6		3.5	20	20
	Upper Moawhango (Rang_2c)	7 to 8.2	0.5	19	2	80	1	2.5	50	30	6	70	6	320	99	2.5		5	20	20
	Middle Moawhango (Rang_2d)	7 to 8.5	0.5	19	2	80	1	5	120	30	10	110	5	400	95	2.5		15	30	30
	Lower Moawhango (Rang_2e)	7 to 8.5	0.5	22	3	70	2	5	120	30	10	110	5	400	95	2.5	20		30	30
	Upper Hautapu (Rang_2f)	7 to 8.5	0.5	19	2	80	1	2.5	120	30	10	110	6	400	99	1		15	20	20
	Lower Hautapu (Rang_2g)	7 to 8.5	0.5	22	3	70	2	5	120	30	10	110	5	400	95	2.5	20		30	30
Lower Rangitikei (Rang_3)	Lower Rangitikei (Rang_3a)	7 to 8.5	0.5	19	3	80	1	2.5	120	30	10	110	6	400	99	1		15	20	20
	Makohine (Rang_3b)	7 to 8.5	0.5	22	3	70	2	5	200	30	10	110	5	400	95		20		30	30
Coastal Rangitikei (Rang_4)	Coastal Rangitikei (Rang_4a)	7 to 8.5	0.5	22	3	70	2	5	120	30	10	110	5	400	95	2.5		15	30	30
	Tidal Rangitikei (Rang_4b)	7 to 8.5	0.5	24	3	70	2	5	200	30	15	167	5	400	95	2.5		15	30	30
	Porewa (Rang_4c)	7 to 8.5	0.5	22	3	70	2	5	200	30	10	110	5	400	95		20		30	30
	Tutaenui (Rang_4d)	7 to 8.5	0.5	24	3	60	2	5	200	30	10	110	5	400	95			15	30	30
Upper Whanganui (Whai_1)	Upper Whanganui	7 to 8.2	0.5	19	2	80	1	2.5	50	30	6	70	6	320	99	2.5		5	20	20
Cherry Grove (Whai_2)	Cherry Grove (Whai_2a)	7 to 8.5	0.5	19	2	80	1	5	120	30	10	110	5	400	95	2.5		15	30	30
	Upper Whakapapa (Whai_2b)	7 to 8.2	0.5	19	2	80	1	2.5	50	30	6	70	6	320	99	2.5		5	20	20
	Lower Whakapapa (Whai_2c)	7 to 8.2	0.5	19	2	80	1	2.5	50	30	6	70	6	320	99	2.5		5	20	20
	Piopiotea (Whai_2d)	7 to 8.2	0.5	19	2	80	1	2.5	50	30	6	70	6	320	99	2.5		5	20	20
	Pungapunga (Whai_2e)	7 to 8.5	0.5	19	2	80	1	5	120	30	10	110	5	400	95	2.5		15	30	30

Management Zone	Sub zone	pH		Temp (°C)		DO (%SAT)	BOD <sub>5</sub> (g/m <sup>3</sup> )	POM (g/m <sup>3</sup> )	Periphyton		DRP (mg/m <sup>3</sup> )	SIN (mg/m <sup>3</sup> )	QMCI	Ammonia (mg/m <sup>3</sup> )	Tox.	Turbidity (NTU)				Clarity (m)	
		Range	Δ	<	Δ	>	<	<	Chla (mg/m <sup>2</sup> )	% cover	<	<		<		<	<1/2 m	< m	< 3 xm	Δ	Δ
	Upper Ongarue (Whai_2f)	7 to 8.2	0.5	19	2	80	1	2.5	50	30	6	70	6	320	99	2.5		5	20	20	
	Lower Ongarue (Whai_2g)	7 to 8.5	0.5	19	2	80	1	5	120	30	10	110	5	400	95	2.5		15	30	30	
<b>Te Maire (Whai_3)</b>	Te Maire	7 to 8.5	0.5	19	2	80	1	5	120	30	10	110	5	400	95	2.5		15	30	30	
<b>Middle Whanganui (Whai_4)</b>	Middle Whanganui (Whai_4a)	7 to 8.5	0.5	19	2	80	1	5	120	30	10	110	5	400	95	2.5		15	30	30	
	Upper Ohura (Whai_4b)	7 to 8.5	0.5	22	3	70	2	5	200	30	15	167	5	400	95		20		30	30	
	Lower Ohura (Whai_4c)	7 to 8.5	0.5	22	3	70	2	5	200	30	15	167	5	400	95		20		30	30	
	Retaruke (Whai_4d)	7 to 8.5	0.5	19	2	80	1	5	120	30	10	110	5	400	95	2.5		15	30	30	
<b>Pipiriki (Whai_5)</b>	Pipiriki (Whai_5a)	7 to 8.5	0.5	22	3	70	2	5	120	30	10	110	5	400	95	2.5	20		30	30	
	Tangarakau (Whai_5b)	7 to 8.5	0.5	22	3	70	2	5	200	30	15	167	5	400	95		20		30	30	
	Whangamomona (Whai_5c)	7 to 8.5	0.5	22	3	70	2	5	200	30	15	167	5	400	95		20		30	30	
	Upper Manganui o te Ao (Whai_5d)	7 to 8.2	0.5	19	2	80	1	2.5	50	30	6	70	6	320	99	0.6		3.5	20	20	
	Lower Manganui o te Ao (Whai_5e)	7 to 8.5	0.5	19	2	80	1	2.5	120	30	10	110	6	320	99	0.6		3.5	20	20	
<b>Paetawa (Whai_6)</b>	Paetawa	7 to 8.5	0.5	22	3	70	2	5	120	30	10	110	5	400	95	2.5	20		30	30	
<b>Lower Whanganui (Whai_7)</b>	Lower Whanganui (Whai_7a)	7 to 8.5	0.5	22	3	70	2	5	200	30	15	167	5	400	95		20		30	30	
	Coastal Whanganui (Whai_7b)	7 to 8.5	0.5	24	3	60	2	5	200	30	15	167	5	400	95		20		30	30	
	Upokongaro (Whai_7c)	7 to 8.5	0.5	22	3	70	2	5	200	30	15	167	5	400	95		20		30	30	
	Matarawa (Whai_7d)	7 to 8.5	0.5	22	3	70	2	5	200	30	15	167	5	400	95		20		30	30	
<b>Upper Whangaehu (Whau_1)</b>	Upper Whangaehu (Whau_1a)	7 to 8.2 <sup>(a)</sup>	0.5	19	2	80	1	2.5	50	30	6	70	6	320	99			5 <sup>(a)</sup>	20	20	

Management Zone	Sub zone	pH		Temp (°C)		DO (%SAT)	BOD <sub>5</sub> (g/m <sup>3</sup> )	POM (g/m <sup>3</sup> )	Periphyton		DRP (mg/m <sup>3</sup> )	SIN (mg/m <sup>3</sup> )	QMCI	Ammonia (mg/m <sup>3</sup> )	Tox.	Turbidity (NTU)				Clarity (m)	
		Range	Δ	<	Δ	>	<	<	Chla (mg/m <sup>2</sup> )	% cover	<	<		<		<	< 1/2 m	< m	< 3 xm	Δ	Δ
	Waitangi (Whau_1b)	7 to 8.5	0.5	19	2	80	1	5	120	30	10	110	5	400	95	2.5		15	30	30	
	Tokiahuru (Whau_1c)	7 to 8.2	0.5	19	2	80	1	2.5	50	30	6	70	6	320	99	2.5		5	20	20	
<b>Middle Whangaeahu (Whau_2)</b>	Middle Whangaeahu	7 to 8.5 <sup>(a)</sup>	0.5	22	3	70	2	5	200	30	15	167	5	400	95		20 <sup>(a)</sup>		30	30	
<b>Lower Whangaeahu (Whau_3)</b>	Lower Whangaeahu (Whau_3a)	7 to 8.5 <sup>(a)</sup>	0.5	22	3	70	2	5	200	30	15	167	5	400	95		20 <sup>(a)</sup>		30	30	
	Upper Makotuku (Whau_3b)	7 to 8.2	0.5	19	2	80	1	2.5	50	30	6	70	6	320	99	2.5		5	20	20	
	Lower Makotuku (Whau_3c)	7 to 8.2	0.5	19	2	80	1	2.5	50	30	6	70	6	320	99	2.5		5	20	20	
	Upper Mangawhero (Whau_3d)	7 to 8.2	0.5	19	2	80	1	2.5	50	30	6	70	6	320	99	2.5		5	20	20	
	Lower Mangawhero (Whau_3e)	7 to 8.5	0.5	22	3	70	2	5	120	30	10	110	5	400	95	2.5	20		30	30	
<b>Coastal Whangaeahu (Whau_4)</b>	Coastal Whangaeahu	7 to 8.5 <sup>(a)</sup>	0.5	22	3	70	2	5	200	30	15	167	5	400	95		20 <sup>(a)</sup>		30	30	
<b>Turakina (Tura_1)</b>	Upper Turakina (Tura_1a)	7 to 8.5	0.5	22	3	70	2	5	200	30	15	167	5	400	95		20		30	30	
	Lower Turakina (Tura_1b)	7 to 8.5	0.5	22	3	70	2	5	200	30	15	167	5	400	95		20		30	30	
	Ratana (Tura_1c)	7 to 8.5	0.5	24	3	60	2	5	200	30	15	167	5	400	95			15	30	30	
<b>Ohau (Ohau_1)</b>	Upper Ohau (Ohau_1a)	7 to 8.2	0.5	19	2	80	1	2.5	50	30	6	70	6	320	99	2.5		5	20	20	
	Lower Ohau (Ohau_ba)	7 to 8.5	0.5	22	3	70	2	5	120	30	10	110	5	400	95	2.5		15	30	30	
<b>Owahanga (Owha_1)</b>	Owahanga	7 to 8.5	0.5	22	3	70	2	5	200	30	15	167	5	400	95		20		30	30	
<b>East Coast (East_1)</b>	East Coast	7 to 8.5	0.5	22	3	70	2	5	200	30	15	167	5	400	95		20		30	30	
<b>Akitio (Akit_1)</b>	Upper Akitio (Akit_1a)	7 to 8.5	0.5	22	3	70	2	5	200	30	15	167	5	400	95		20		30	30	
	Lower Akitio (Akit_1b)	7 to 8.5	0.5	22	3	70	2	5	200	30	15	167	5	400	95		20		30	30	
	Waihi (Akit_1c)	7 to 8.5	0.5	22	3	70	2	5	200	30	15	167	5	400	95		20		30	30	

Management Zone	Sub zone	pH		Temp (°C)		DO (%SAT)	BOD <sub>5</sub> (g/m <sup>3</sup> )	POM (g/m <sup>3</sup> )	Periphyton		DRP (mg/m <sup>3</sup> )	SIN (mg/m <sup>3</sup> )	QMCI	Ammonia (mg/m <sup>3</sup> )	Tox.	Turbidity (NTU)				Clarity (m)
		Range	Δ	<	Δ	>	<	<	Chla (mg/m <sup>2</sup> )	% cover	<	<		<		<1/2 m	< m	< 3 xm	Δ	Δ
Northern Coastal (West_1)	Northern Coastal	7 to 8.5	0.5	24	3	60	2	5	200	30	15	167	5	400	95			15	30	30
Kai Iwi (West_2)	Kai Iwi	7 to 8.5	0.5	22	3	70	2	5	200	30	15	167	5	400	95		20		30	30
Mowhanau (West_3)	Mowhanau	7 to 8.5	0.5	24	3	60	2	5	200	30	15	167	5	400	95			15	30	30
Kaitoke Lakes (West_4)	Kaitoke Lakes	7 to 8.5	0.5	24	3	60	2	5	200	30	15	167	5	400	95			15	30	30
Southern Wanganui Lakes (West_5)	Southern Wanganui Lakes	7 to 8.5	0.5	24	3	60	2	5	200	30	15	167	5	400	95			15	30	30
Northern Manawatu Lakes (West_6)	Northern Manawatu Lakes	7 to 8.5	0.5	24	3	60	2	5	200	30	15	167	5	400	95			15	30	30
Waitarere (West_7)	Waitarere	7 to 8.5	0.5	24	3	60	2	5	200	30	15	167	5	400	95			15	30	30
Lake Papaitonga (West_8)	Lake Papaitonga	7 to 8.5	0.5	24	3	60	2	5	200	30	15	167	5	400	95			15	30	30
Waikawa (West_9)	Waikawa	7 to 8.5	0.5	22	3	70	2	5	120	30	10	167	5	400	95			15	30	30
Lake Horowhenua (Hoki_1)	Lake Horowhenua (Hoki_1a)	7 to 8.5	0.5	24	3	60	2	5	200	30	15	167	5	400	95			15	30	30
	Hokio (Hoki_1b)	7 to 8.5	0.5	24	3	60	2	5	200	30	15	167	5	400	95			15	30	30



## Additional Water quality standards

### Additional standards applying to all natural stream and river waters:

1. The concentration of *Escherichia coli* when the river or stream flow is at or below median flow shall not exceed 260 per 100 millilitres. This standard applies during the period 1<sup>st</sup> November to 30<sup>th</sup> April inclusive, and
2. The concentration of *Escherichia coli* when the river or stream flow is at or below three times median flow shall not exceed 550 per 100 millilitres. This standard applies year round.
3. The concentration of toxins due to cyanobacteria (blue-green algae) shall not exceed 20 milligrams per cubic metre. This standard applies year round.

## Water quality standards for natural lakes and lake catchments

This part defines :

- water management subzones where water quality standards for lakes and lake catchments are defined (Table D.18); and
- water quality standard for natural lake waters, and
- water quality standard for streams and rivers that flow into lakes (Table D.19 and Table D.20)

The following zones contain natural lakes:

**Table D.18:** Water Management Sub-zones where lake water and lake catchment water quality standards apply

West_1	Tura_1c	Mana_13a
Whai_7b	West_5	Hoki_1a
West_4	West_6	West_8
Whau_4	West_7	

**Lowland lakes water quality standards. These standards apply year round to waters of all natural lakes within the water management subzones defined in Table D18.**

1. The pH of the water shall be within the range 7 to 8.5 and shall not be changed by more than 0.5 pH;
2. The temperature of the water shall not be changed by more than 1°C;
3. The Dissolved Oxygen concentration shall not be less than 80% in the surface waters (defined as less than 2 metres deep);
4. The five-days Biological oxygen demand shall not exceed 1 g/m<sup>3</sup>;
5. The annual average algal biomass shall not exceed 5 mg Chlorophyll a/m<sup>3</sup> and no sample shall exceed 15 mg Chlorophyll a/m<sup>3</sup>;
6. The annual average total phosphorus concentration shall not exceed 20 mg/m<sup>3</sup>;
7. The annual average total nitrogen concentration shall not exceed 337 mg/m<sup>3</sup>;
8. The concentration of ammoniacal Nitrogen shall not exceed 337 mg/m<sup>3</sup>;

9. For toxicants not otherwise defined in these standards, the concentration of toxicants in the water shall not exceed the trigger values defined in the 2000 ANZECC guidelines Table 3.4.1 with the level of protection of 95 % of species;
10. The clarity of the water measured as Secchi depth shall not be less than 2.8m and shall not be changed by more than 20%;
11. The turbidity shall not be changed by more than 20%. This standard shall apply only when physical conditions existing at the site prevent adequate water clarity (Secchi Disc) measurement.
12. The concentration of Escherichia coli shall not exceed 260 per 100 millilitres. This standard applies during the period 1<sup>st</sup> November to 30<sup>th</sup> April inclusive, and
13. The concentration of Escherichia coli shall not exceed 550 per 100 millilitres. This standard applies during the period 1<sup>st</sup> May to 31<sup>th</sup> October inclusive year round.
4. The concentration of toxins due to cyanobacteria (blue-green algae) shall not exceed 20 milligrams per cubic metre. This standard applies year round

**Table D.19:** The water quality standards defined in Table D.20 shall be read as follows (the numerical values in Table D.20 are indicated by [...])

Column		Standard spelt out
header	sub-header	
pH	Range	The pH of the water shall be within the range [...] to [...]
	Δ	The pH of the water shall not be changed by more than
Temp (°C)	<	The temperature of the water shall not exceed [...] degrees Celsius.
	Δ	The temperature of the water shall not be changed by more than [...] degrees Celsius.
DO (%SAT)	<	The concentration of dissolved oxygen shall exceed [...] % of saturation
BOD <sub>5</sub> (g/m <sup>3</sup> )	<	The five-days biological oxygen demand shall not exceed [...] grams per cubic metre.
POM (g/m <sup>3</sup> )	<	The concentration of particulate organic matter shall not exceed [...] grams per cubic metre.
Periphyton	Chla (mg/m <sup>2</sup> )	The algal biomass on the stream or river bed shall not exceed [...] milligrams of chlorophyll a per square metre.
	% cover	The maximum cover of visible stream or river bed by periphyton (as filamentous algae more than 2 centimetres long) shall not exceed [...] % between 1 <sup>st</sup> November to 30 <sup>th</sup> April inclusive.
TP (mg/m <sup>3</sup> )	<	The mean monthly concentration of total phosphorus shall not exceed [...] milligrams per cubic meter, unless natural levels already exceed this standard.
TN (mg/m <sup>3</sup> )	<	The mean monthly concentration of total nitrogen shall not exceed [...] milligrams per cubic meter.
Ammonia (mg/m <sup>3</sup> )	<	The concentration of ammonia nitrogen reactive phosphorus shall not exceed [...] milligrams per cubic meter.
Toxicants	<	For toxicants not otherwise defined in these standards, the concentration of toxicants in the water shall not exceed the trigger values defined in the 2000 ANZECC guidelines Table 3.4.1 with the level of protection of [...] % of species.
Turbidity (NTU)	< ½ m	The turbidity of the water when the river flow is at or below <u>half median flow</u> shall not exceed [...] Nephelometric Turbidity Units (NTU)
	< m	The turbidity of the water when the river flow is at or below <u>median flow</u> shall not exceed [...] Nephelometric Turbidity Units (NTU)
	< 3 x m	The turbidity of the water when the river flow is at or below <u>three times median flow</u> shall not exceed [...] Nephelometric Turbidity Units (NTU)
	Δ	The turbidity of the water shall not be changed by more than [...] %
Clarity (m)	Δ	The clarity of the water measured as being the horizontal sighting range of a 200 mm black disc shall not be changed by more than [...] %

## Notes:

- a. The pH change standard applies only within the bounds of the pH range standard
- b. The temperature change standard applies only within the bounds of the temperature standard.
- c. Soluble Inorganic Nitrogen (SIN) concentration is measured of the sum of nitrate nitrogen, nitrite nitrogen and ammonia nitrogen

**Table D.20:** The following water quality standards apply to streams and rivers in natural lakes catchments (ie., flowing directly or indirectly into a natural lake)

Management Zone	Management Sub-zone	pH		Temp (°C)		DO (%SAT)	BOD <sub>5</sub> (g/m <sup>3</sup> )	POM (g/m <sup>3</sup> )	Periphyton		TP (mg/m <sup>3</sup> )	TN (mg/m <sup>3</sup> )	Ammonia (mg/m <sup>3</sup> )	Toxicants	Turbidity (NTU)				Clarity (m)
		Range	Δ	<	Δ	>	<	<	Chla (mg/m <sup>2</sup> )	% cover	<	<	<		<1/2 m	< m	< 3 xm	Δ	Δ
Coastal Manawatu Mana_13	Coastal Manawatu Mana_13a	7 to 8.5	0.5	24	3	70	2	5	200	30	20	337	337	95	2.5		15	30	30
Lower Whanganui Whai_7	Coastal Whanganui Whai_7b	7 to 8.5	0.5	24	3	60	2	5	200	30	20	337	337	95		20		30	30
Coastal Whangaehu Whau_4	Coastal Whangaehu Whau_4	7 to 8.5	0.5	22	3	70	2	5	200	30	20	337	337	95		20		30	30
Turakina Tura_1	Ratana Tura_1c	7 to 8.5	0.5	24	3	60	2	5	200	30	20	337	337	95			15	30	30
Northern Coastal West_1	Northern Coastal West_1	7 to 8.5	0.5	24	3	60	2	5	200	30	20	337	337	95			15	30	30
Kaitoke Lakes West_4	Kaitoke Lakes West_4	7 to 8.5	0.5	24	3	60	2	5	200	30	20	337	337	95			15	30	30
Southern Wanganui Lakes West_5	Southern Wanganui Lakes West_5	7 to 8.5	0.5	24	3	60	2	5	200	30	20	337	337	95			15	30	30
Northern Manawatu Lakes West_6	Northern Manawatu Lakes West_6	7 to 8.5	0.5	24	3	60	2	5	200	30	20	337	337	95			15	30	30
Waitarere West_7	Waitarere West_7	7 to 8.5	0.5	24	3	60	2	5	200	30	20	337	337	95			15	30	30
Lake Papaitonga West_8	Lake Papaitonga West_8	7 to 8.5	0.5	24	3	60	2	5	200	30	20	337	337	95			15	30	30
Lake Horowhenua Hoki_1	Lake Horowhenua Hoki_1a	7 to 8.5	0.5	24	3	60	2	5	200	30	20	337	337	95			15	30	30

Note these water management subzones also contain streams and river that do not flow into a natural lake. For these waters, standards in Table D.17 apply

**Additional water quality standards applying to the streams and rivers classified as Trout Spawning. The following standards apply to all streams where the TS (Trout Spawning) value is identified, from 1<sup>st</sup> May to 30 September inclusive.**

1. The temperature of the water shall not be changed by more than 2°C, and
2. The temperature of the water shall not exceed 11°C, and
3. The dissolved oxygen concentration shall not be less than 80% saturation, and
4. There shall be no measurable increase in sediment or particulate organic matter deposited on the bed of the river or stream, and
5. The concentration of toxicants in the water shall not exceed the trigger values defined in the 2000 ANZECC guidelines Table 3.4.1 with the level of protection of 99 % of species.

**Water quality standards for the marine coastal waters. The following standards apply year round to the waters within the coastal Marine area.**

1. The pH of the water shall be within the range 8 to 8.3 and shall not be changed by more than 0.1 pH;
2. The temperature of the water shall not be changed by more than 1°C;
3. The Dissolved Oxygen concentration shall not be less than 90 % in the surface waters defined as less than 2 metres deep;
4. The average annual algal biomass shall not exceed 1 mg Chlorophyll *a*/m<sup>3</sup>;
5. The average annual total phosphorus concentration shall not exceed 10 mg/m<sup>3</sup>;
6. The average annual total nitrogen concentration shall not exceed 60 mg/m<sup>3</sup>;
7. The concentration of ammonia nitrogen shall not exceed 60 mg/m<sup>3</sup>;
8. For toxicants not otherwise defined in these standards, the concentration of toxicants in the water shall not exceed the trigger values defined in the 2000 ANZECC guidelines Table 3.4.1 with the level of protection of 99 % of species;
9. The clarity of the water measured as Secchi depth shall not be changed by more than 20%;
10. The turbidity shall not be changed by more than 20%. This standard shall apply only when physical conditions existing at the site prevent adequate water clarity (Secchi Disc) measurement.
11. The concentration of *Enterococci* shall not exceed 140 per 100 millilitres. This standard applies during the period 1<sup>st</sup> November to 30<sup>th</sup> April inclusive, and
12. The concentration of *Enterococci* shall not exceed 280 per 100 millilitres. This standard applies during the period 1<sup>st</sup> May to 31<sup>th</sup> October inclusive.
13. The median concentration of faecal coliforms shall not exceed 14 per 100 millilitres and the 90<sup>th</sup> percentile shall not exceed 43 per 100 millilitres. This standard applies year round.
14. The concentration of toxins due to cyanobacteria (blue-green algae) shall not exceed 20 milligrams per cubic metre. This standard applies year round.