

Schedule AA: Surface Water Management Zones* and Sub-zones*

Schedule AA is a component of Part II - the Regional Plan.

SCHEDULE AA WATER MANAGEMENT ZONE* AND SUB-ZONE* INDEX:

<u>Section</u>	<u>Page Numbers</u>
<u>Surface Water Management Zones* - Regional Scale</u>	<u>AA-2 - AA-5</u>
<u>Surface Water Management Sub-zones* - Catchment Scale</u>	
<u>Manawatu Catchment</u>	<u>AA-6 - AA-11</u>
<u>Rangitikei Catchment</u>	<u>AA-12 - AA-15</u>
<u>Whanganui Catchment</u>	<u>AA-16 - AA-20</u>
<u>Whangaehu Catchment</u>	<u>AA-21 - AA-25</u>
<u>Turakina Catchment</u>	<u>AA-26 - AA-29</u>
<u>East Coast Catchment</u>	<u>AA-30 - AA-33</u>
<u>West Coast, Ohau and Lake Horowhenua Catchments</u>	<u>AA-34 - AA-37</u>

Management Zones and Sub-zones



Map D-1 Water Management Zones in the Manawatu-Wanganui Region

[Formerly POP at D-11]



Figure AA:1 *Surface Water Management Zones** in the Region (refer to Table AA.1 for details)

Table AA.1: Surface Water Management Zones* in the Region		
Parent Catchment	Surface Water Management Zone* Code	Surface Water Management Zone* Name
<u>Manawatu</u>	<u>Mana 1</u>	<u>Upper Manawatu</u>
	<u>Mana 2</u>	<u>Weber-Tamaki</u>
	<u>Mana 3</u>	<u>Upper Tamaki</u>
	<u>Mana 4</u>	<u>Upper Kumeti</u>
	<u>Mana 5</u>	<u>Tamaki-Hopelands</u>
	<u>Mana 6</u>	<u>Hopelands-Tiraumea</u>
	<u>Mana 7</u>	<u>Tiraumea</u>
	<u>Mana 8</u>	<u>Mangatainoka</u>
	<u>Mana 9</u>	<u>Upper Gorge</u>
	<u>Mana 10</u>	<u>Middle Manawatu</u>
	<u>Mana 11</u>	<u>Lower Manawatu</u>
	<u>Mana 12</u>	<u>Oroua</u>
	<u>Mana 13</u>	<u>Coastal Manawatu</u>
<u>Rangitikei</u>	<u>Rang 1</u>	<u>Upper Rangitikei</u>
	<u>Rang 2</u>	<u>Middle Rangitikei</u>
	<u>Rang 3</u>	<u>Lower Rangitikei</u>
	<u>Rang 4</u>	<u>Coastal Rangitikei</u>
<u>Whanganui</u>	<u>Whai 1</u>	<u>Upper Whanganui</u>
	<u>Whai 2</u>	<u>Cherry Grove</u>
	<u>Whai 3</u>	<u>Te Maire</u>
	<u>Whai 4</u>	<u>Middle Whanganui</u>
	<u>Whai 5</u>	<u>Pipiriki</u>
	<u>Whai 6</u>	<u>Paetawa</u>
	<u>Whai 7</u>	<u>Lower Whanganui</u>
<u>Whangaehu</u>	<u>Whau 1</u>	<u>Upper Whangaehu</u>
	<u>Whau 2</u>	<u>Middle Whangaehu</u>
	<u>Whau 3</u>	<u>Lower Whangaehu</u>
	<u>Whau 4</u>	<u>Coastal Whangaehu</u>
<u>Turakina</u>	<u>Tura 1</u>	<u>Turakina</u>
<u>Ohau</u>	<u>Ohau 1</u>	<u>Ohau</u>
<u>Owahanga</u>	<u>Owha 1</u>	<u>Owahanga</u>
<u>East Coast</u>	<u>East 1</u>	<u>East Coast</u>
<u>Akitio</u>	<u>Akit 1</u>	<u>Akitio</u>
<u>West Coast</u>	<u>West 1</u>	<u>Northern Coastal</u>
	<u>West 2</u>	<u>Kai Iwi</u>
	<u>West 3</u>	<u>Mowhanau</u>
	<u>West 4</u>	<u>Kaitoke Lakes</u>
	<u>West 5</u>	<u>Southern Whanganui Lakes</u>
	<u>West 6</u>	<u>Northern Manawatu Lakes</u>
	<u>West 7</u>	<u>Waitarere</u>
	<u>West 8</u>	<u>Lake Papaitonga</u>
	<u>West 9</u>	<u>Waikawa</u>
<u>Lake Horowhenua</u>	<u>Hoki 1</u>	<u>Lake Horowhenua</u>



Map D:2 ~~Manawatu Catchment Water Management Zones and Sub-zones~~ [Formerly POP at D-12]

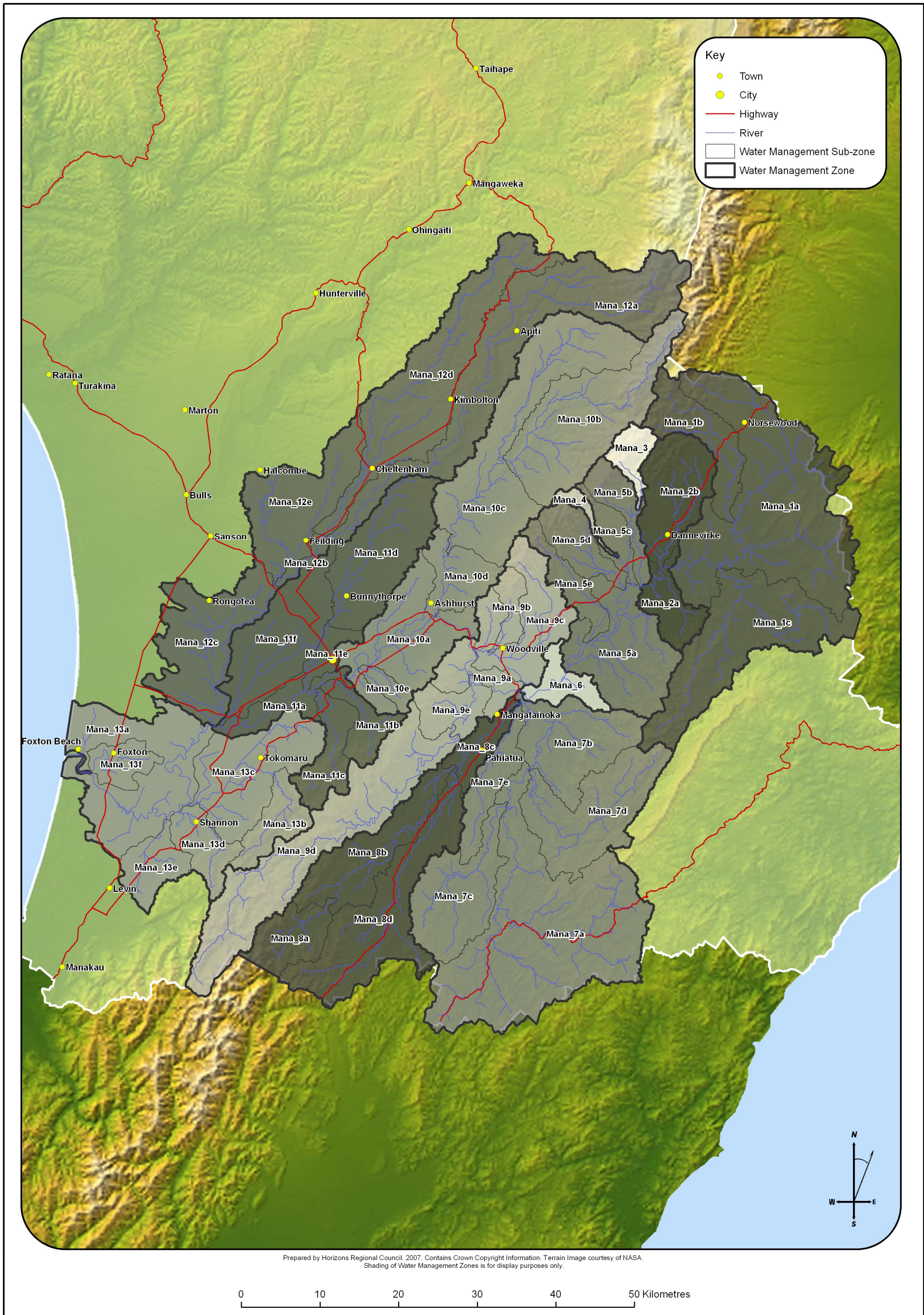


Figure AA:2 Manawatu Catchment - Surface Water Management Zones* and Sub-zones* (refer to Table AA.2 for details)

Table AA.2: Description of Manawatu Catchment Surface Water Management Zones* and Sub-zones*

Water Management Zone*	Sub-zone*	Sub-zone* Description¹
Upper Manawatu (Mana_1)	Upper Manawatu (Mana_1a)	Manawatu River source to <u>from</u> Weber Road at approx. NZMS 260 (U23:751-027) <u>to source</u>
	Mangatewainui (Mana_1b)	Mangatewainui River source to <u>from</u> Manawatu River confluence at approx. NZMS 260 (U23:829-086) <u>to source</u>
	Mangatoro (Mana_1c)	Mangatoro Stream source to <u>from</u> Manawatu River confluence at approx. NZMS 260 (U23:810-027) <u>to source</u>
Weber-Tamaki (Mana_2)	Weber-Tamaki (Mana_2a)	Manawatu River Weber Road to <u>from</u> Tamaki River confluence at approx. NZMS 260 U23:709-003 <u>to Weber Road at approx. NZMS 260 U23:751-027</u>
	Mangatera (Mana_2b)	Mangatera Stream source to <u>from</u> Manawatu River confluence at approx. NZMS 260 (U23:737-025) <u>to source</u>
Upper Tamaki (Mana_3)	Upper Tamaki (Mana_3)	Tamaki River source to <u>from</u> water supply weir at approx. NZMS 260 (U23:709-111) <u>to source</u>
Upper Kumeti (Mana_4)	Upper Kumeti (Mana_4)	Kumeti Stream source to <u>from</u> Te Rehunga flow recorder at approx. NZMS 260 (T23:663-052) <u>to source</u>
Tamaki-Hopelands (Mana_5)	Tamaki-Hopelands (Mana_5a)	Manawatu River Tamaki confluence to <u>from</u> Hopelands at approx. NZMS 260 (T24:616-899) <u>to Tamaki River confluence at approx. NZMS 260 U23:709-003</u>
	Lower Tamaki (Mana_5b)	Tamaki River Water supply weir to <u>from</u> Manawatu River confluence at approx. NZMS 260 (U23:709-002) <u>to water supply weir at approx. NZMS 260 U23:709-111</u>
	Lower Kumeti (Mana_5c)	Kumeti Stream Te Rehunga to <u>from</u> Manawatu River confluence at approx. NZMS 260 (U23:701-006) <u>to Te Rehunga flow recorder at approx. NZMS 260 T23:663-052</u>
	Oruakeretaki (Mana_5d)	Oruakeretaki Stream source to <u>from</u> Manawatu River confluence at approx. NZMS 260 (T23:690-000) <u>to source</u>
	Raparapawai (Mana_5e)	Raparapawai Stream source to <u>from</u> Manawatu River confluence at approx. NZMS 260 (T24:643-932) <u>to source</u>
Hopelands-Tiraumea (Mana_6)	Hopelands-Tiraumea (Mana_6)	Manawatu River Hopelands to <u>from</u> Tiraumea River confluence (Ngawapurua) at approx. NZMS 260 (T24:553-870) <u>to Hopelands at approx. NZMS 260 T24: 616-899</u>
Tiraumea (Mana_7)	Upper Tiraumea (Mana_7a)	Tiraumea River source to <u>Ngaturi from</u> Makuri River confluence at approx. NZMS 260 (T24:578-780) <u>to source</u>
	Lower Tiraumea (Mana_7b)	Tiraumea River Ngaturi confluence to <u>from</u> Manawatu River confluence at approx. NZMS 260 (T24:555-870) <u>to Makuri River confluence at approx. NZMS 260 T24:578-780</u>
	Mangaone River (Mana_7c)	Mangaone River source to <u>from</u> Tiraumea River confluence at approx. NZMS 260 (T24:541-730) <u>to source</u>
	Makuri (Mana_7d)	Makuri River source to <u>from</u> Tiraumea River confluence at approx. NZMS 260 (T24:568-771) <u>to source</u>
	Mangaramarama (Mana_7e)	Mangaramarama Creek from Tiraumea River confluence at approx. NZMS 260 T24:559-854 <u>to source</u>

¹ Includes all inflowing tributaries and surrounding catchment area unless otherwise specified.

Table AA.2: Description of Manawatu Catchment Surface Water Management Zones* and Sub-zones*

Water Management Zone*	Sub-zone*	Sub-zone* Description¹
Mangatainoka (Mana_8)	Upper Mangatainoka (Mana_8a)	<u>Mangatainoka River from Source to Larsons Road at approx. NZMS 260 T25:308-595 to source</u>
	Middle Mangatainoka (Mana_8b)	<u>Mangatainoka River from Larsons Road to downstream Makakahi River confluence at approx. NZMS 260 T24:475-775 to Larsons Road at approx. NZMS 260 T25:308-595</u>
	Lower Mangatainoka (Mana_8c)	<u>Mangatainoka River from Makakahi confluence to Tiraumea River confluence at approx. NZMS 260 T24:577-854 to Makakahi River confluence at approx. NZMS 260 T24:475-775</u>
	Makakahi (Mana_8d)	<u>Makakahi River – source to from Mangatainoka River confluence at approx. NZMS 260 T24:475-775 to source</u>
	Mangaramarama (Mana_8e)	<u>Mangaramarama Creek – source to Mangatainoka confluence (T24:557-844)</u>
Upper Gorge (Mana_9)	Upper Gorge (Mana_9a)	<u>Manawatu River – Tiraumea confluence to from Upper Gorge flow recorder at approx. NZMS 260 (T24:494-933) to Tiraumea River confluence at approx. NZMS 260 T24:553-870</u>
	Mangapapa (Mana_9b)	<u>Mangapapa Stream – source to from Mangaatua Stream confluence at approx. NZMS 260 (T24:515-922) to source</u>
	Mangaatua (Mana_9c)	<u>Mangaatua Stream – source to from Manawatu River confluence at approx. NZMS 260 (T24:496-925) to source</u>
	Upper Mangahao (Mana_9d)	<u>Mangahao River – source to Ballance from Ballance at approx. NZMS 260 (T24:468-818) to source</u>
	Lower Mangahao (Mana_9e)	<u>Mangahao River – Ballance to from Manawatu River confluence at approx. NZMS 260 (T24:496-891) to Ballance at approx. NZMS 260 T24:468-818</u>
Middle Manawatu (Mana_10)	Middle Manawatu (Mana_10a)	<u>Manawatu River – Upper Gorge to from Teacher's College at approx. NZMS 260 (T24:331-892) to Upper Gorge at approx. NZMS 260 T24:494-933</u>
	Upper Pohangina (Mana_10b)	<u>Pohangina River – source to from Totara Reserve at approx. NZMS 260 (T23:534-167) to source</u>
	Middle Pohangina (Mana_10c)	<u>Pohangina River – Totara Reserve to from Mais Reach at approx. NZMS 260 (T23:467-053) to Totara Reserve at approx. NZMS 260 T23:534-167</u>
	Lower Pohangina (Mana_10d)	<u>Pohangina River – Mais Reach to from Manawatu River confluence at approx. NZMS 260 (T24:450-966) to Mais Reach at approx. NZMS 260 T23:467-053</u>
	Aokautere (Mana_10e)	<u>Aokautere Stream – source to from Manawatu River confluence at approx. NZMS 260 (T24:349-899) to source</u>
Lower Manawatu (Mana_11)	Lower Manawatu (Mana_11a)	<u>Manawatu River – Teacher's College to from Oroua River confluence at approx. NZMS 260 (S24:167-826) to Teachers College at approx. NZMS 260 T24:331-892</u>
	Turitea (Mana_11b)	<u>Turitea Stream – source to from Manawatu River confluence at approx. NZMS 260 (T24:304-881) to source</u>
	Kahuterawa (Mana_11c)	<u>Kahuterawa Stream – source to from Manawatu River confluence at approx. NZMS 260 (S24:292-876) to source</u>
	Upper Mangaone Stream (Mana_11d)	<u>Mangaone Stream – source to from Milson Line at approx. NZMS 260 (T24:311-953) to source</u>

Table AA.2: Description of Manawatu Catchment Surface Water Management Zones* and Sub-zones*

<u>Water Management Zone*</u>	<u>Sub-zone*</u>	<u>Sub-zone* Description¹</u>
	Lower Mangaone Stream (Mana_11e)	Mangaone Stream – Milson Line to from Manawatu River confluence at approx. NZMS 260 (S24:283-872) to Milson Line at approx. NZMS 260 T24:311-953
	Main Drain (Mana_11f)	Main Drain catchment (including Taonui Stream) to from Manawatu River confluence (including Taonui Stream) at approx. NZMS 260 (S24:181-836) to source
Oroua (Mana_12)	Upper Oroua (Mana_12a)	Oroua River – source to from Almadale at approx. NZMS 260 (T23:365-113) to source
	Middle Oroua (Mana_12b)	Oroua River – Almadale from Awahuri Bridge at approx. NZMS 260 (S23:243-002) to Almadale at approx. NZMS 260 T23:365-113
	Lower Oroua (Mana_12c)	Oroua River – Awahuri Bridge to from Manawatu River confluence at approx. NZMS 260 (S24:167-826) to Awahuri Bridge at approx. NZMS 260 S23:243-002
	Kiwitea (Mana_12d)	Kiwitea Stream – source to from Oroua River confluence at approx. NZMS 260 (T23:309-066) to source
	Makino (Mana_12e)	Makino Stream – source to from Oroua River confluence at approx. NZMS 260 (S23:243-004) to source
Coastal Manawatu (Mana_13)	Coastal Manawatu (Mana_13a)	Manawatu River – Oroua confluence to mouth at approx. NZMS 260 (S24:977-788) to Oroua River confluence at approx. NZMS 260 S24:167-826 (excluding the mainstem of the Manawatu River from the cross-river CMA boundary at NZMS 260 S24:2700963-6076686 seawards)
	Upper Tokomaru (Mana_13b)	Tokomaru River – source to from Horseshoe Bend at approx. NZMS 260 (S24:241-768) to source
	Lower Tokomaru (Mana_13c)	Tokomaru River – Horseshoe Bend to from Manawatu River confluence at approx. NZMS 260 (S24:134-727) to Horseshoe Bend at approx. NZMS 260 S24:241-768
	Mangaore (Mana_13d)	Mangaore River – source to from Manawatu River confluence at approx. NZMS 260 (S24:123-717) to source
	Koputaroa (Mana_13e)	Koputaroa Stream – source to from Manawatu River confluence at approx. NZMS 260 (S24:106-708) to source
	Foxton Loop (Mana_13f)	Manawatu River at SH1 to from downstream limit of Whirikino Cut at approx. NZMS 260 (S24:010-769) to SH1

[Formerly POP Table D.2 columns 1, 2 & 3 at D-3 to D-6]



Map D-3 Rangitikei Catchment Water Management Zones and Sub-zones [Formerly POP at D-13]

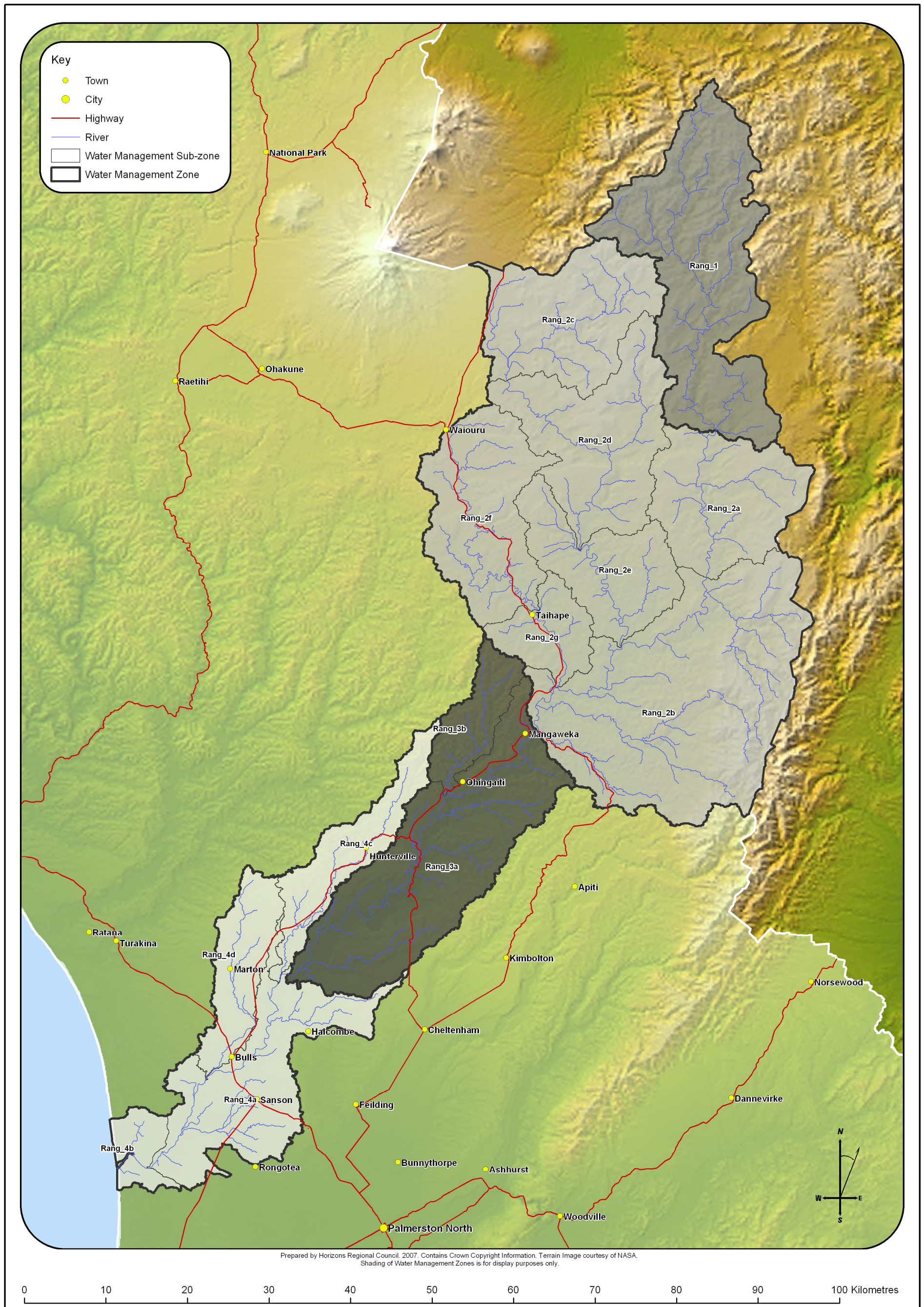


Figure AA:3 Rangitikei Catchment - Surface Water Management Zones* and Sub-zones* (refer to Table AA.3 for details)

Table AA.3: Description of Rangitikei Catchment Surface Water Management Zones* and Sub-zones*

Water Management Zone*	Sub-zone*	Sub-zone* Description¹
Upper Rangitikei (Rang_1)	Upper Rangitikei (Rang_1)	Rangitikei River source to from Makahikatoa Stream at approx. NZMS 260 (U21:726-888) to source
Middle Rangitikei (Rang_2)	Middle Rangitikei (Rang_2a)	Rangitikei River Makahikatoa Stream to from Pukeokahu at approx. NZMS 260 (U21:713-708) to Makahikatoa Stream at approx. NZMS 260 U21:726-888
	Pukeokahu – Mangaweka (Rang_2b)	Rangitikei River main stem Pukeokahu to from Mangaweka at approx. NZMS 260 (T22:504-513) to Pukeokahu at approx. NZMS 260 U21:713-708
	Upper Moawhango (Rang_2c)	Moawhango River source to from Moawhango Dam at approx. NZMS 260 (T20:469-960) to source
	Middle Moawhango (Rang_2d)	Moawhango River Dam to from Moawhango Township at approx. NZMS 260 (T21:557-745) to Moawhango Dam at approx. NZMS 260 T20:469-960
	Lower Moawhango (Rang_2e)	Moawhango River Moawhango Township to from Rangitikei River confluence at approx. NZMS 260 (T21:609-623) to Moawhango Township at approx. NZMS 260 T21:557-745
	Upper Hautapu (Rang_2f)	Hautapu River source to from Taihape at approx. NZMS 260 (T21:506-670) to source
	Lower Hautapu (Rang_2g)	Hautapu River Taihape to from Rangitikei River confluence at approx. NZMS 260 (T22:529-574) to Taihape at approx. NZMS 260 T21:506-670
Lower Rangitikei (Rang_3)	Lower Rangitikei (Rang_3a)	Rangitikei River Mangaweka to from Onepuhi at approx. NZMS 260 (S23:201-222) to Mangaweka at approx. NZMS 260 T22:504-513
	Makohine (Rang_3b)	Makohine Stream source to from Rangitikei River confluence at approx. NZMS 260 (T22:400-443) to source
Coastal Rangitikei (Rang_4)	Coastal Rangitikei (Rang_4a)	Rangitikei River Onepuhi to from McKelvies at approx. NZMS 260 (S24:033-985) to Onepuhi at approx. NZMS 260 S23:201-222
	Tidal Rangitikei (Rang_4b)	Rangitikei River McKelvies to mouth at approx. NZMS 260 (S24:991-984) to McKelvies at approx. NZMS 260 S24:033-985 (excluding the mainstem of the Rangitikei River from the cross-river CMA boundary at NZMS 260 S23:2700960-6100119 seawards)
	Porewa (Rang_4c)	Porewa Stream source to from Rangitikei River confluence at approx. NZMS 260 (S23:190-212) to source
	Tutaenui (Rang_4d)	Tutaenui Stream source to from Rangitikei River confluence at approx. NZMS 260 (S23:101-095) to source

[Formerly POP Table D.2 columns 1, 2 & 3 at D-6 & D-7]

¹ Includes all inflowing tributaries and surrounding catchment area unless otherwise specified.



Map D:4 – Whanganui Catchment Water Management Zones and Sub-zones [Formerly POP at D-14]

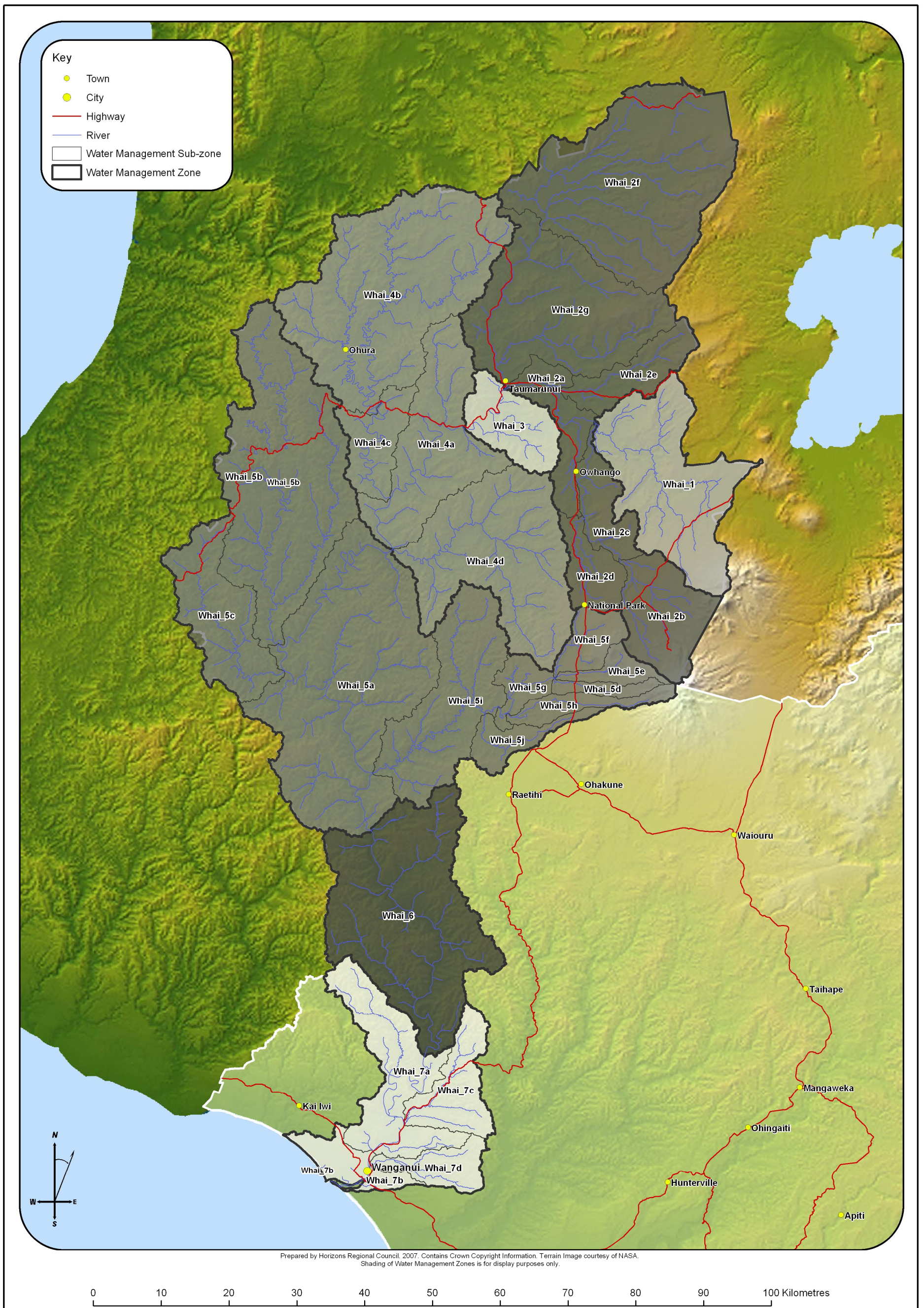


Figure AA:4 Whanganui Catchment - Surface Water Management Zones* and Sub-zones* (refer to Table AA.4 for details)

Table AA.4: Description of Whanganui Catchment Surface Water Management Zones* and Sub-zones*

Water Management Zone*	Sub-zone*	Sub-zone* Description¹
Upper Whanganui (Whai_1)	Upper Whanganui (Whai_1)	Whanganui River – source to <u>from Whakapapa River confluence at approx. NZMS 260 (S19:189-499) to source</u>
	Cherry Grove (Whai_2a)	Whanganui River – Whakapapa confluence to <u>from Cherry Grove at approx. NZMS 260 (S18:057-545) to Whakapapa River confluence at approx. NZMS 260 S19:189-499</u>
Cherry Grove (Whai_2)	Upper Whakapapa (Whai_2b)	Whakapapa River – source to <u>from Footbridge at approx. NZMS 260 (S19:226-293) to source</u>
	Lower Whakapapa (Whai_2c)	Whakapapa River – Footbridge to <u>from Whanganui River confluence at approx. NZMS 260 (S19:189-499) to Footbridge at approx. NZMS 260 S19:226-293</u>
	Piopiotea (Whai_2d)	Piopiotea Stream – source to <u>from Whakapapa River confluence at approx. NZMS 260 (S19:174-356) to source</u>
	Pungapunga (Whai_2e)	Pungapunga River – source to <u>from Whanganui River confluence at approx. NZMS 260 (S18:124-546) to source</u>
	Upper Ongarue (Whai_2f)	Ongarue River – source to <u>from Waihuka Stream confluence at approx. NZMS 260 (S18:108-785) to source</u>
	Lower Ongarue (Whai_2g)	Ongarue River – Waihuka Stream to <u>from Whanganui River confluence at approx. NZMS 260 (S18:056-547) to Waihuka Stream confluence at approx. NZMS 260 S18:108-785</u>
Te Maire (Whai_3)	Te Maire (Whai_3)	Whanganui River – Cherry Grove to <u>from Te Maire at approx. NZMS 260 (S19:998-490) to Cherry Grove at approx. NZMS 260 S18:057-545</u>
Middle Whanganui (Whai_4)	Middle Whanganui (Whai_4a)	Whanganui River – Te Maire to <u>from Retaruke River confluence (Wades Landing/Whakahore) at approx. NZMS 260 (R19:886-306) to Te Maire at approx. NZMS 260 S19:998-490</u>
	Upper Ohura (Whai_4b)	Ohura River – source to <u>from Tokorima at approx. NZMS 260 (R18:863-521) to source</u>
	Lower Ohura (Whai_4c)	Ohura River – Tokorima to <u>from Whanganui River confluence at approx. NZMS 260 (R19:887-386) to Tokorima at approx. NZMS 260 R18:863-521</u>
	Retaruke (Whai_4d)	Retaruke River – source to <u>from Whanganui River confluence at approx. NZMS 260 (R19:890-309) to source</u>
Pipiriki (Whai_5)	Pipiriki (Whai_5a)	Whanganui River – Retaruke confluence to <u>from Pipiriki at approx. NZMS 260 (R21:859-897) to Retaruke River confluence at approx. NZMS 260 R19: 886-306</u>
	Tangarakau (Whai_5b)	Tangarakau River – source to <u>from Whanganui River confluence at approx. NZMS 260 (R20:714-175) to source</u>
	Whangamomona (Whai_5c)	Whangamomona River – source to <u>from Whanganui River confluence at approx. NZMS 260 (R20:731-130) to source</u>
	Upper Manganui o te Ao (Whai_5d)	Manganui o te Ao River – source to <u>Hoihenga Road (S20:047-077) from Makatote River confluence at approx. NZMS 260 S20:129-120 to source</u>
	Makatote (Whai_5e)	Makatote River from Manganui o te Ao River confluence at approx. NZMS 260 S20:129-120 to source

¹ Includes all inflowing tributaries and surrounding catchment area unless otherwise specified.

Table AA.4: Description of Whanganui Catchment Surface Water Management Zones* and Sub-zones*

<u>Water Management Zone*</u>	<u>Sub-zone*</u>	<u>Sub-zone* Description¹</u>
	<u>Waimarino (Whai_5f)</u>	<u>Waimarino Stream from Makatote River confluence at approx. NZMS 260 S20:129-120 to source</u>
	<u>Middle Manganui o te Ao (Whai_5g)</u>	<u>Manganui o te Ao River from Hoihenga Road at approx. NZMS 260 S20:047-077 to Makatote River confluence at approx. NZMS 260 S20:129-120</u>
	<u>Mangaturuturu (Whai_5h)</u>	<u>Mangaturuturu River from Manganui o te Ao River confluence at approx. NZMS 260 S20:057-067 to source</u>
	<u>Lower Manganui o te Ao (Whai_5ej)</u>	<u>Manganui o te Ao River – Hoihenga Road to from Whanganui River confluence at approx. NZMS 260 (R20:861-979) to Hoihenga Road at approx. NZMS 260 S20:047-077</u>
	<u>Orautoha (Whai_5i)</u>	<u>Orautoha Stream from Manganui o te Ao River confluence at approx. NZMS 260 S20:026-067 to source</u>
Paetawa (Whai_6)	<u>Paetawa (Whai_6)</u>	<u>Whanganui River – Pipiriki to from Paetawa at approx. NZMS 260 (S22:937-566) to Pipiriki at approx. NZMS 260 R21:859-897</u>
Lower Whanganui (Whai_7)	<u>Lower Whanganui (Whai_7a)</u>	<u>Whanganui River – Paetawa to from Aramoho Bridge at approx. NZMS 260 (R22:858-420) to Paetawa at approx. NZMS 260 S22:937-566</u>
	<u>Coastal Whanganui (Whai_7b)</u>	<u>Whanganui River – Aramoho Bridge to mouth at approx. NZMS 260 (R22:797-328) to Aramoho Bridge at approx. NZMS 260 R22:858-420 (excluding the mainstem of the Whanganui River from the cross-river CMA boundary at NZMS 260 R22:2684857-6138015 seawards)</u>
	<u>Upokongaro (Whai_7c)</u>	<u>Upokongaro River – source to from Whanganui River confluence at approx. NZMS 260 (S22:908-463) to source</u>
	<u>Matarawa (Whai_7d)</u>	<u>Matarawa River – source to from Whanganui River confluence at approx. NZMS 260 (R22:857-403) to source</u>

[Formerly POP Table D.2 columns 1, 2 & 3 at D-7 & D-8]



Map D:5 Whangaehu Catchment Water Management Zones and Sub-zones [Formerly POP at D-15]

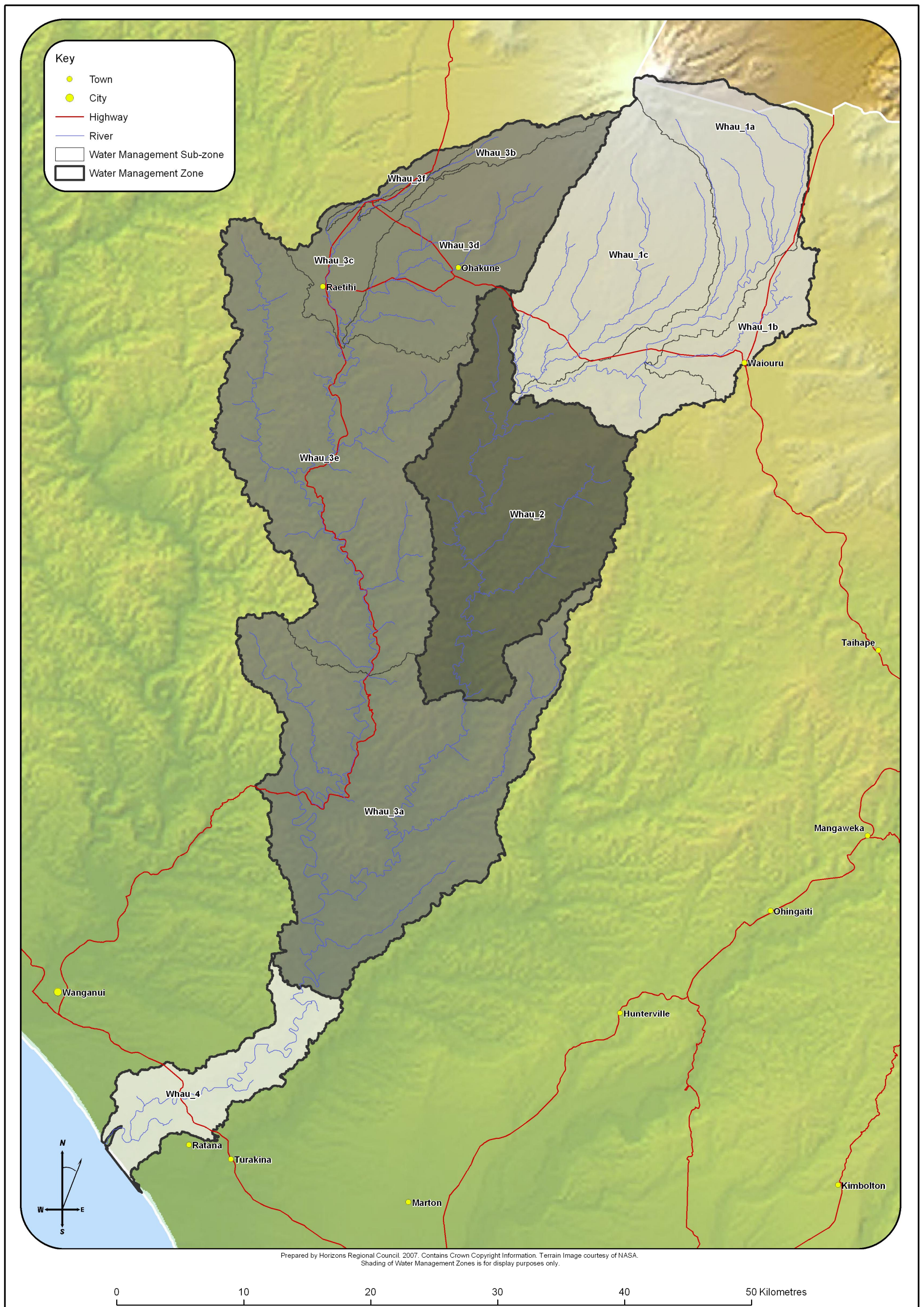


Figure AA:5 Whangaehu Catchment - Surface Water Management Zones* and Sub-zones* (refer to Table AA.5 for details)

Table AA.5: Description of Whangaehu Catchment Surface Water Management Zones* and Sub-zones*

<u>Water Management Zone*</u>	<u>Sub-zone*</u>	<u>Sub-zone* Description¹</u>
Upper Whangaehu (Whau_1)	Upper Whangaehu (Whau_1a)	Whangaehu River – source to <u>from Karioi at approx. NZMS 260 (S21:218-864) to source</u>
	Waitangi (Whau_1b)	Waitangi Stream – source to <u>from Whangaehu River confluence at approx. NZMS 260 (T21:316-888) to source</u>
	Tokiahuru (Whau_1c)	Tokiahuru Stream – source to <u>from Whangaehu River confluence at approx. NZMS 260 (S21:219-865) to source</u>
Middle Whangaehu (Whau_2)	Middle Whangaehu (Whau_2)	Whangaehu River – Karioi to <u>from Aranui at approx. NZMS 260 (S21:175-627) to Karioi at approx. NZMS 260 S21:218-864</u>
Lower Whangaehu (Whau_3)	Lower Whangaehu (Whau_3a)	Whangaehu River – Aranui to <u>from Kauangaroa at approx. NZMS 260 (S22:045-397) to Aranui at approx. NZMS 260 S21:175-627 (including the Mangawhero River from Raupiu Road to Whangaehu River confluence to Raupiu Road at approx. NZMS 260 S21:099-646)</u>
	Upper Makotuku (Whau_3b)	Makotuku River – source to <u>Water from water supply weir at approx. NZMS 260 (S20:103-011) to source</u>
	Lower Makotuku (Whau_3c)	Makotuku River – Water supply weir to <u>from Mangawhero River confluence at approx. NZMS 260 (S20:080-903) to water supply weir at approx. NZMS 260 S20:103-011</u>
	Upper Mangawhero (Whau_3d)	Mangawhero River – source to <u>from Makotuku River confluence at approx. NZMS 260 (S20:080-903) to source</u>
	Lower Mangawhero (Whau_3e)	Mangawhero River – Makotuku confluence to <u>from Raupiu Road at approx. NZMS 260 (S21:099-646) to Makotuku River confluence at approx. NZMS 260 S20:080-903</u>
	Makara (Whau_3f)	<u>Makara Stream from unnamed tributary confluence at approx. NZMS 260 S20:065-992 to source</u>
Coastal Whangaehu (Whau_4)	Coastal Whangaehu (Whau_4)	Whangaehu River – Kauangaroa to <u>mouth at approx. NZMS 260 (R23:890-275) to Kauangaroa at approx. NZMS 260 S22:045-397 (excluding the mainstem of the Whangaehu River from the cross-river CMA boundary at NZMS 260 S23:2690359-6128748 seawards)</u>

[Formerly POP Table D.2 columns 1, 2 & 3 at D-8 & D-9]

¹ Includes all inflowing tributaries and surrounding catchment area unless otherwise specified.



~~Map D:6 Turakina Catchment Water Management Zones and Sub-zones~~

[Formerly POP at D-16]

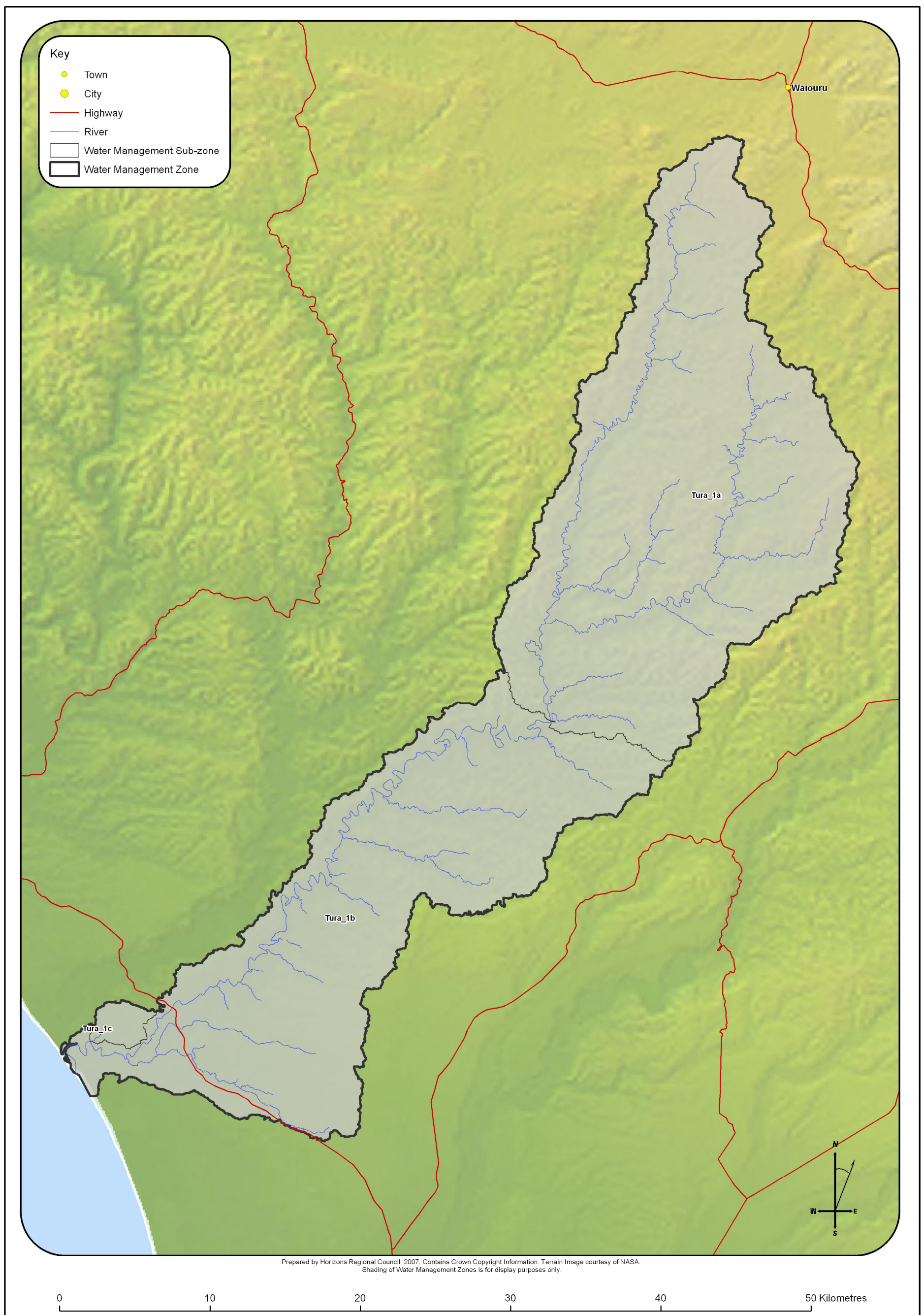


Figure AA:6 Turakina Catchment - Surface Water Management Zones* and Sub-zones* (refer to Table AA.6 for details)

Table AA.6: Description of Turakina Catchment Surface Water Management Zone* and Sub-zones*

<u>Water Management Zone*</u>	<u>Sub-zone*</u>	<u>Sub-zone* Description¹</u>
Turakina (Tura_1)	Upper Turakina (Tura_1a)	Turakina River source to from Otairi at approx. NZMS 260 (S22:236-471) to source
	Lower Turakina (Tura_1b)	Turakina River Otairi to mouth at approx. NZMS 260 (S23:924-231) to Otairi at <u>approx. NZMS 260 S22:236-471 (excluding the mainstem of the Turakina River from the cross-river CMA boundary at NZMS 260 S23:2692145-6125465 seawards)</u>
	Ratana (Tura_1c)	Lakes Waipu and Oraekomiko and all surrounding catchment area

[Formerly POP Table D.2 columns 1, 2 & 3 at D-9]

¹ Includes all inflowing tributaries and surrounding catchment area unless otherwise specified.



~~Map D:7 East Coast Water Management Zones and Sub-zones~~

[Formerly POP at D-17]

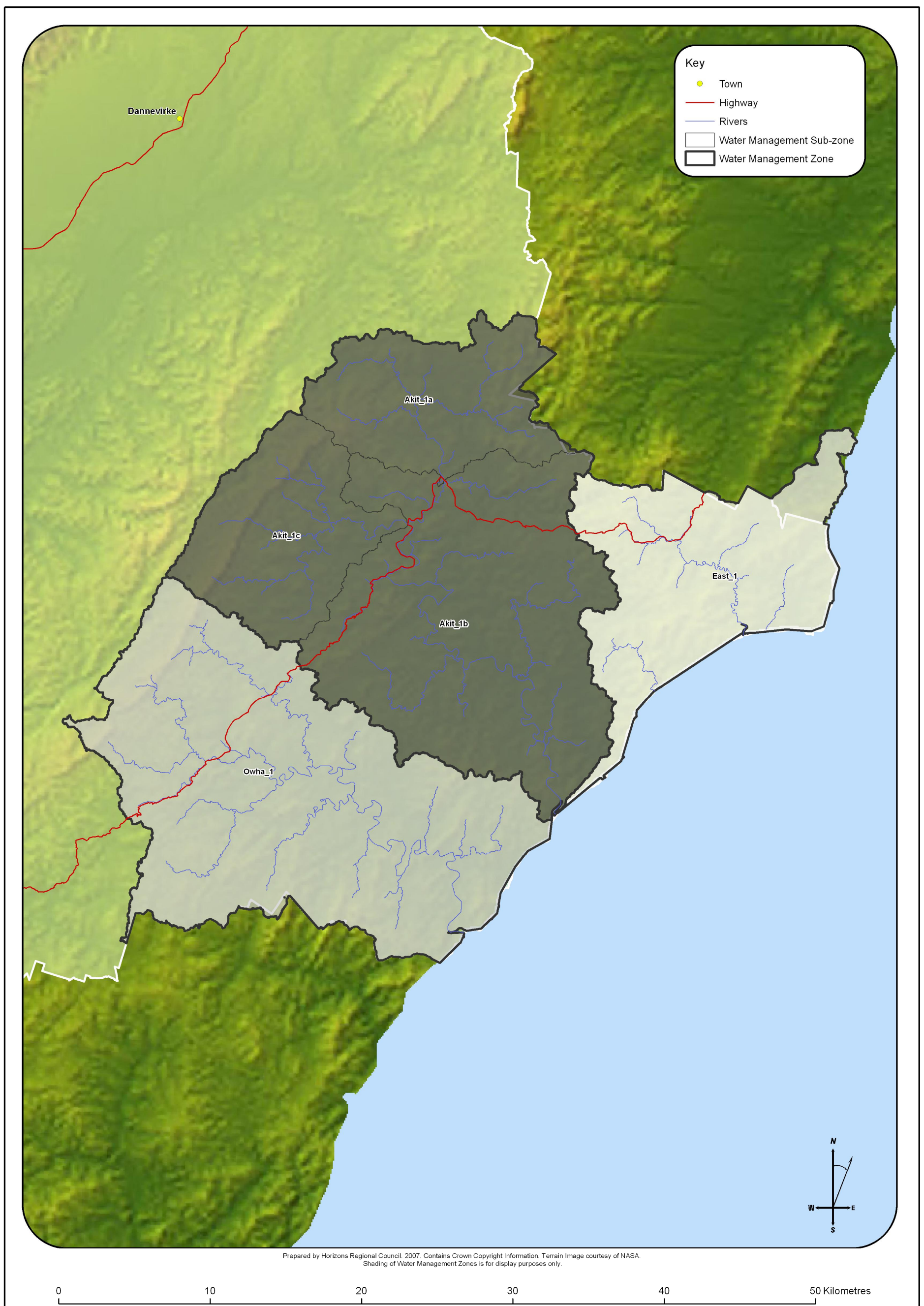


Figure AA:7 East Coast - Surface Water Management Zones* and Sub-zones* (refer to Table AA.7 for details)

Table AA.7: Description of East Coast Surface Water Management Zone* and Sub-zones*

<u>Water Management Zone*</u>	<u>Sub-zone*</u>	<u>Sub-zone* Description⁶</u>
East Coast (East_1)	East Coast (East_1)	Wainui, Tautane and Waimata – whole catchments from source to mouth (excluding the mainstem of the Wainui River from the cross-river CMA boundary at NZMS 260 V24:2811596-6073518 seawards)
Akitio (Akit_1)	Upper Akitio (Akit_1a)	Akitio River source to from Weber Road at approx. NZMS 260 (U24:919-832) to source
	Lower Akitio (Akit_1b)	Akitio River Weber Road to mouth at approx. NZMS 260 (U25:992-610) to Weber Road at approx. NZMS 260 U24:919-832 (excluding the mainstem of the Akitio River from the cross-river CMA boundary at NZMS 260 U25:2799657-6061852 seawards)
	Waihi (Akit_1c)	Waihi Stream source to from Akitio River confluence at approx. NZMS 260 (U24:895-801) to source
Owahanga (Owha_1)	Owahanga (Owha_1)	Owahanga River source to mouth at approx. NZMS 260 (U25:932-532) to source (excluding the mainstem of the Owahanga River from the cross-river CMA boundary at NZMS 260 U25:2792204-6053185 seawards)

[Formerly POP Table D.2 columns 1, 2 & 3 at D-9]

⁶ Includes all inflowing tributaries and surrounding catchment area unless otherwise specified.



Map D-8 West Coast Water Management Zones and Sub-zones

[Formerly POP at D-18]

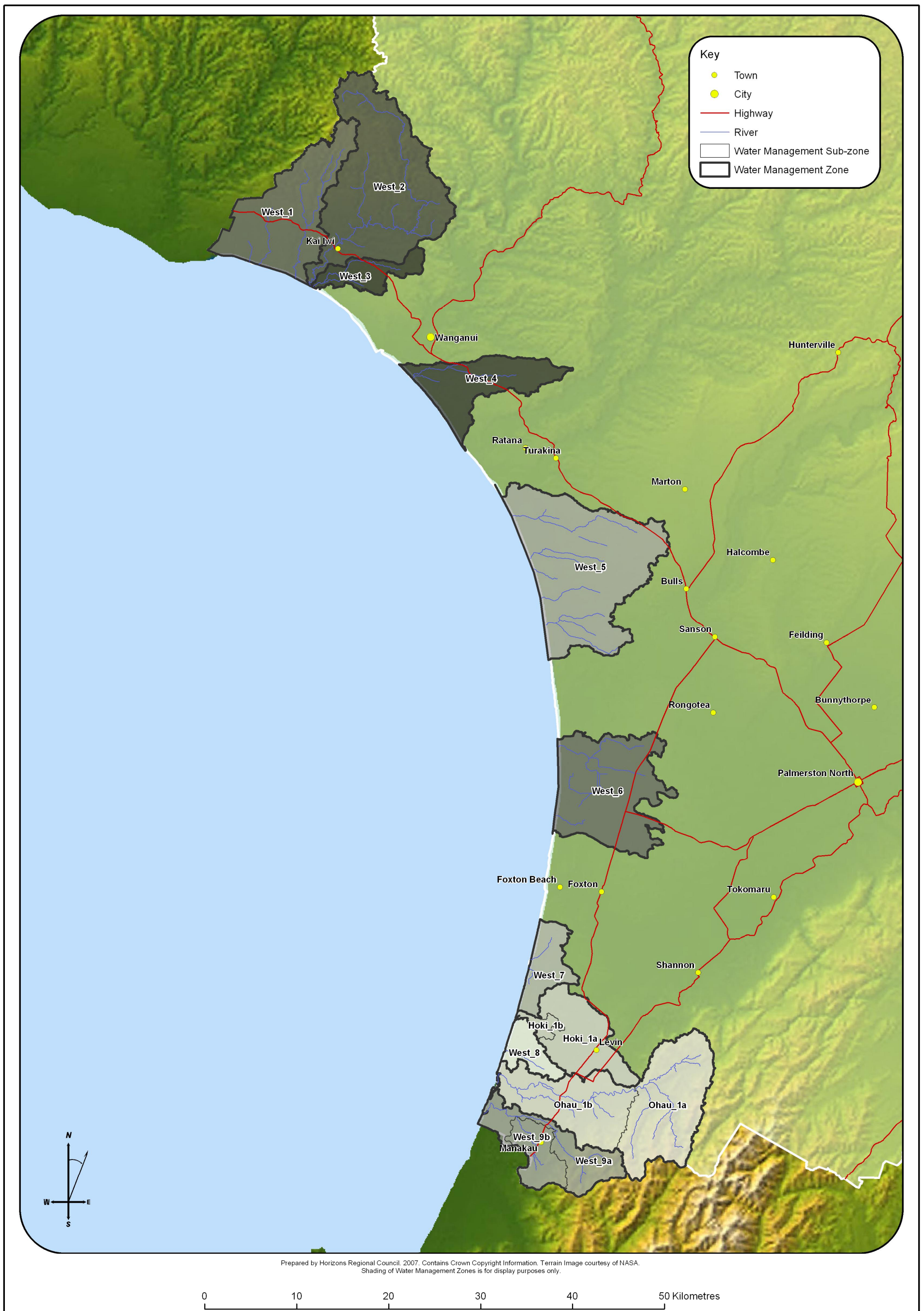


Figure AA:8 West Coast, Ohau and Lake Horowhenua - Surface Water Management Zones* and Sub-zones* (refer to Table AA.8 for details)

Table AA.8: Description of West Coast, Ohau and Lake Horowhenua Surface Water Management Zones* and Sub-zones*

<u>Water Management Zone*</u>	<u>Sub-zone*</u>	<u>Sub-zone* Description¹</u>
Northern Coastal (West_1)	Northern Coastal (West_1)	All coastal catchments and dune lakes between Kai Iwi and Waitotara catchments
Kai Iwi (West_2)	Kai Iwi (West_2)	Kai Iwi Stream – source to mouth at approx. NZMS 260 (R23:723-449) <u>to source (excluding the mainstem of the Kai Iwi Stream from the cross-river CMA boundary at NZMS 260 R22:2672262-6145059 seawards)</u>
Mowhanau (West_3)	Mowhanau (West_3)	Mowhanau Stream – source to mouth at approx. NZMS 260 (R22:725-447) <u>to source (excluding the mainstem of the Mowhanau Stream from the cross-river CMA boundary at NZMS 260 R22:2672640-6144895 seawards)</u>
Kaitoke Lakes (West_4)	Kaitoke Lakes (West_4)	Lakes Kaitoke, Pauri, Wiritoa, Kohata and all surrounding catchment area
Southern Whanganui Lakes (West_5)	Southern Whanganui Lakes (West_5)	Lakes Vipan, Heaton, Bernard, William, Herbert, Hickson, Alice, Koitiata, Dudding and all surrounding catchment area
Northern Manawatu Lakes (West_6)	Northern Manawatu Lakes (West_6)	All lakes and lagoons between Coastal Rangitikei and Coastal Manawatu and all surrounding catchment area
Waitarere (West_7)	Waitarere (West_7)	All lakes and lagoons between Coastal Manawatu and Lake Horowhenua catchment and all surrounding catchment area
Lake Papaitonga (West_8)	Lake Papaitonga (West_8)	Lake Papaitonga catchment
Waikawa (West_9)	Waikawa (West_9a)	Waikawa Stream – source to mouth at approx. NZMS 260 (S25:908-548) <u>to source (excluding the mainstem of the Waikawa Stream from the cross-river CMA boundary at NZMS 260 S25:2691531-6055429 seawards)</u>
	Manakau (West_9b)	Manakau Stream from Waikawa Stream confluence at approx. NZMS 260 S25:946-549 to source
Ohau (Ohau_1)	Upper Ohau (Ohau_1a)	Ohau River – source to from Rongomatane at approx. NZMS 260 (S25:072-577) <u>to source</u>
	Lower Ohau (Ohau_1ba)	Ohau River – Rongomatane to mouth at approx. NZMS 260 (S25:918-578) <u>to Rongomatane at approx. NZMS 260 S25:072-577 (excluding the mainstem of the Ohau River from the cross-river CMA boundary at NZMS 260 S25:2692921-6059503 seawards)</u>
Lake Horowhenua (Hoki_1)	Lake Horowhenua (Hoki_1a)	Whole lake catchment above Hokio Stream outlet
	Hokio (Hoki_1b)	Hokio Stream downstream of Lake Horowhenua outlet <u>(excluding the mainstem of the Hokio Stream from the cross-river CMA boundary at NZMS 260 S25:2694967-6065799 seawards)</u>

[Formerly POP Table D.2 columns 1, 2 & 3 at D-9 & D-10]

¹ Includes all inflowing tributaries and surrounding catchment area unless otherwise specified.

