

Schedule C: Groundwater Quantity

Schedule C is a component of Part II - the Regional Plan.

Table C.1: Allocation limits by <i>Groundwater Management Zone</i>*		
<i>Groundwater Management Zone</i>*	<i>Surface Water Management Zones</i>* within <i>GWMZ</i>*	<i>Annual Allocable Volume for GWMZ</i>* (m³/y)
Whanganui	Lower Whanganui (Whai_7) Northern Coastal (West_1) Kai Iwi (West_2) Mowhanau (West_3) Kaitoke Lakes (West_4)	46,000,000
Whangaehu	Upper Whangaehu (Whau_1) Middle Whangaehu (Whau_2) Lower Whangaehu (Whau_3) Coastal Whangaehu (Whau_4)	122,000,000
Turakina	Turakina (Tura_1)	50,000,000
Rangitikei	Lower Rangitikei (Rang_3) Coastal Rangitikei (Rang_4) Southern Whanganui Lakes (West_5) Northern Manawatu Lakes (West_6)	75,000,000
Manawatu	Middle Manawatu (Mana_10) Lower Manawatu (Mana_11) Oroua (Mana_12) Coastal Manawatu (Mana_13)	166,000,000
Horowhenua	Lake Horowhenua (Hoki_1) Ohau (Ohau_1) Waitarere (West_7) Lake Papaitonga (West_8) Waikawa (West_9)	27,000,000
Tararua	Upper Manawatu (Mana_1) Weber - Tamaki (Mana_2) Upper Tamaki (Mana_3) Upper Kumeti (Mana_4) Tamaki - Hopelands (Mana_5) Hopelands - Tiraumea (Mana_6) Tiraumea (Mana_7) Mangatainoka (Mana_8) Upper Gorge (Mana_9)	239,000,000
East Coast	Akitio (Akit_1) Owahanga (Owha_1) East Coast (East_1)	Unspecified
Northern Rangitikei	Upper Rangitikei (Rang_1) Middle Rangitikei (Rang_2)	Unspecified
Northern Whanganui	Upper Whanganui (Whai_1) Cherry Grove (Whai_2) Te Maire (Whai_3) Middle Whanganui (Whai_4) Pipiriki (Whai_5) Paetawa (Whai_6)	Unspecified

The annual allocable volumes in Table C.1 are based on 5% of the average annual rainfall for each *Groundwater Management Zone**.

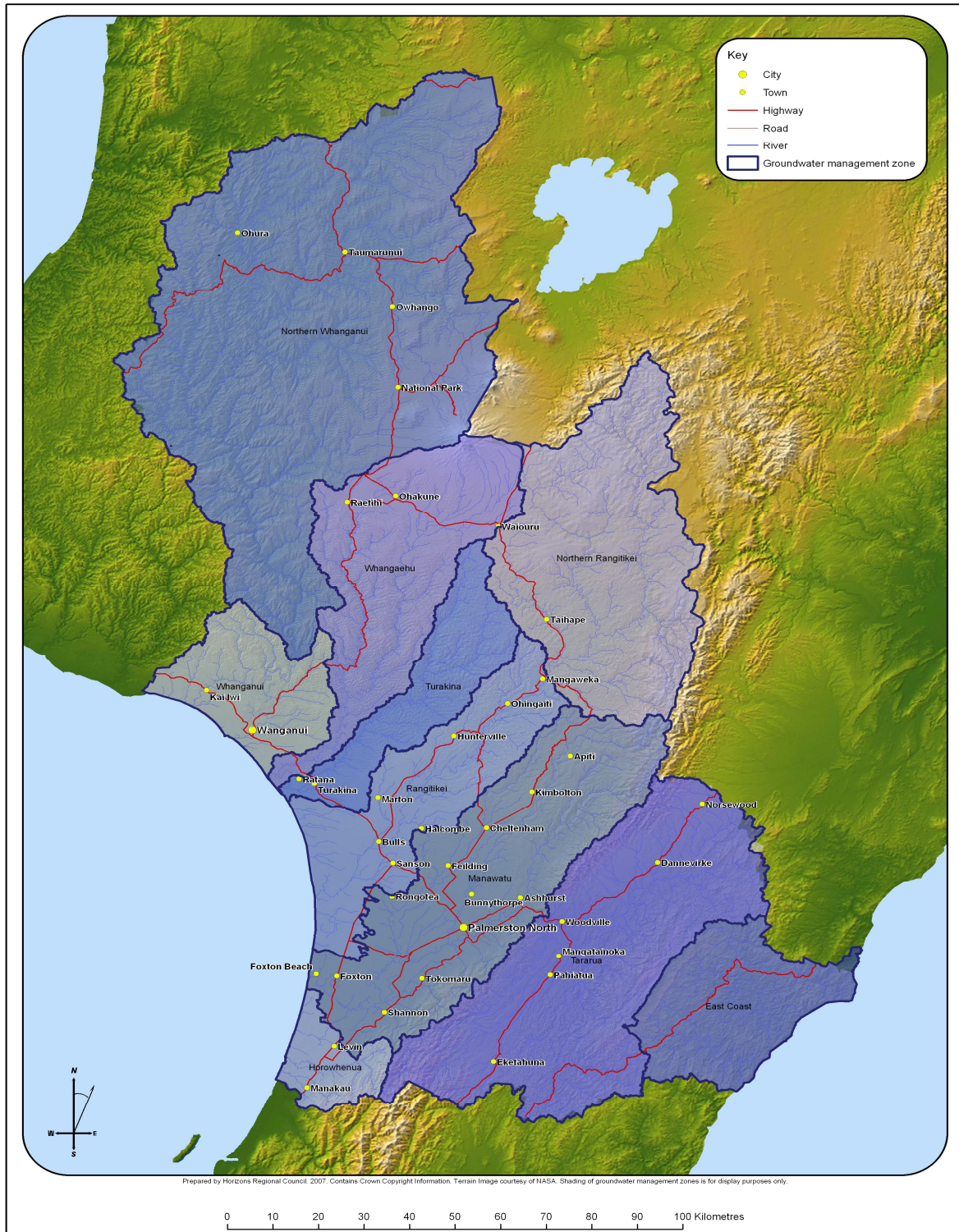


Figure C.1: Groundwater Management Zones* (GWMZ*)

Refer to Table C.1 for the surface *Water Management Sub-zones** within each *GWMZ** and the annual allocable volume for each *GWMZ**.