

Schedule F: Regionally Outstanding Natural Features and Landscapes

Schedule F is a component of Part I - the Regional Policy Statement.

Table F1 lists some regionally outstanding natural features and landscapes in the Manawatu-Wanganui Region and their associated characteristics and values in narrative form.

The extent of some of these regionally outstanding natural features and landscapes has not been defined. Therefore, assessments will be required using the approach set out in Policy 7-7A and the criteria listed in Table 7.2 at the time that any use or development is proposed for those areas, so that the actual location of the feature or landscape can be defined in relation to the use or development proposal.

Regionally important outstanding natural features and landscapes in the Manawatu-Wanganui Region include the following are as follows:

Table F1

Outstanding Natural Features or Landscapes	Characteristics / Values	Other values
(a) <u>Tongariro National Park, particularly the volcanoes and the Rangipo Desert (Figure F:1)</u>	<ul style="list-style-type: none"> (i) <u>Visual and scenic characteristics, particularly the park's visual prominence in the Region and the contrast of the Rangipo desert with adjacent landscapes</u> (ii) <u>Geological features including the Rangataua Lava Flow-</u> (iii) <u>Recreational values, particularly tramping and snow sports</u> (iv) <u>Scientific value, particularly the volcanic landscape</u> (v) <u>Ecological value, particularly the mountainous ecology and the extensive tussock grasslands and wetlands supporting rare indigenous flora</u> (vi) <u>Importance to tangata whenua</u> 	<ul style="list-style-type: none"> (i) <u>Recreational values, particularly tramping and snow sports</u> (ii) <u>Scientific value, particularly the volcanic landscape</u> (iii) <u>Ecological value, particularly the mountainous ecology and the extensive tussock grasslands and wetlands supporting rare indigenous flora</u> (iv) <u>Importance to tangata whenua</u>
(b) <u>Whakapapa River and river valley, including all of the river catchment (Figure F:2)</u>	<ul style="list-style-type: none"> (i) <u>Visual and scenic characteristics</u> (ii) <u>Recreational values</u> (iii) <u>Ecological significance, particularly in providing a habitat for the Blue Duck (whio)</u> 	<ul style="list-style-type: none"> (i) <u>Recreational values</u> (ii) <u>Visual and scenic characteristics</u> (iii) <u>Ecological significance, particularly in providing a habitat for the Blue Duck</u>
(ba) <u>Whanganui River and river valley, upstream of Aramoana</u>	<ul style="list-style-type: none"> (i) <u>Scenic qualities provided by the gorge landscapes and papa rock formations</u> (ii) <u>Recreational values, particularly tramping and</u> 	

Outstanding Natural Features or Landscapes	Characteristics / Values	Other values
	<p><u>hunting, and those provided by the water and riparian margins</u></p> <p>(iii) <u>Ecological value provided by the presence of original forest remnants</u></p> <p>(iv) <u>Importance to tangata whenua</u></p> <p>(v) <u>Historical importance</u></p>	
(c) Whanganui National Park (Figure F:3)	<p>(i) <u>Visual and scenic characteristics, particularly the gorge landscapes and papa rock formations</u></p> <p>(ii) <u>Ecological significance, particularly for providing habitat for rare bird species, the presence of mature indigenous forest, contribution to the national conservation estate, wilderness</u></p> <p>(iii) <u>Intrinsic value</u></p> <p>(iv) <u>Importance to tangata whenua</u></p> <p>(v) <u>Recreational values, particularly tramping and hunting, and those provided by the water and riparian margins</u></p> <p>(vi) <u>Recognised protection – national park</u></p> <p>(vii) <u>Historical importance</u></p>	<p>(i) Ecological significance, particularly for providing habitat for rare bird species; the presence of mature indigenous forest; contribution to the national conservation estate; wilderness</p> <p>(ii) Intrinsic value</p> <p>(iii) Importance to tangata whenua</p> <p>(iv) Recreational values, particularly for tramping and hunting</p> <p>(v) Recognised protection – national park</p>
(d) Kaimanawa Ranges, in particular the skyline and the south-eastern side of the ranges (Figure F:4)	<p>(i) <u>Visual and scenic characteristics, particularly the visual prominence of the skyline in much of the Region</u></p> <p>(ii) <u>Ecological significance, including the Ranges' contribution to the national conservation estate</u></p>	<p>(i) Ecological significance, the ranges' contribution to the national conservation estate</p>
(da) <u>The skyline of the Puketoi Ranges defined as the boundary between the land and sky as viewed at a sufficient distance from the foothills so as to see the contrast between the sky and the solid nature of the land at the crest of the highest points along the ridges</u>	<p>(i) <u>Visual and scenic characteristics, particularly the visual prominence of the skyline in the eastern part of the Region</u></p> <p>(ii) <u>Geological features, particularly the asymmetrical landform termed a cuesta</u></p>	
(e) Mount Aorangi - Awarua (Figure F:5)	<p>(i) <u>Visual and scenic characteristics, particularly Mount Aorangi's its visual prominence and contrast to the Mangaohane Plateau</u></p> <p>(ii) <u>Intrinsic value</u></p>	<p>(i) Intrinsic value</p> <p>(ii) Ecological significance, provided by areas of unmodified podocarp forest and as a habitat for rare indigenous fauna</p>

Outstanding Natural Features or Landscapes	Characteristics / Values	Other values
	<p>(iii) <u>Ecological significance, provided by areas of unmodified podocarp forest, high diversity of wetland types and as a habitat for rare indigenous flora and fauna</u></p> <p>(iv) <u>Scientific value, particularly Reporoa Bog and Makirikiri Tarns</u></p> <p>(v) <u>Importance to tangata whenua</u></p>	
<p>(f) Manganui o te Ao River and river valley, including the Makatote and Mangaturuturu Rivers and their valleys, the Waimarino and Orautoha Streams, (but not the Waimarino and Orautoha valleys or the Ruatiti Stream or valley) (Figure F:6)</p>	<p>(i) Visual and scenic characteristics, particularly its river gorges and riparian margins and outstanding wild and scenic characteristics</p> <p>(ii) <u>Ecological significance, providing a habitat for the Blue Duck (whio), and wildlife and fisheries;</u></p> <p>(iii) <u>Recognised protection – National Water Conservation Order</u></p>	<p>(i) Ecological significance, providing a habitat for the Blue Duck, and wildlife and fisheries;</p> <p>(ii) Recognised protection – national water conservation order</p>
<p>(g) Rangitikei River and river valley from Mangarere Bridge (approximate map reference Infomap NZMS 260 T22:488-496) to Putorino (approximate map reference Infomap NZMS 260 T22:315-315), and from Mangarere Bridge (approximate map reference NZMS 260 T22:488-496) to the confluence of Whakaurekou River and Ohutu Stream (approximate map reference NZMS 260 U21:714-691) (Figure F:7)</p>	<p>(i) Visual and scenic characteristics – particularly its gorges, <u>the Rangitikei alluvial terraces formations and high bluffs, and the Rangitikei River Plio-Pleistocene fossiliferous sediments (map reference NZMS 260 S23: 214-224)</u></p> <p>(ii) <u>Scientific and educational value</u></p>	
<p>(h) <u>The skyline of the Ruahine Ranges Forest Park</u> (Figure F:8)</p>	<p>(i) Visual and scenic characteristics, particularly its prominence throughout much of the Region and its backdrop vista in contrast to the <u>Region's plains</u></p> <p>(ii) <u>Ecological values, including values associated with mature indigenous forest, remnant and regenerating indigenous vegetation and important habitat</u></p> <p>(iii) <u>Contribution to the national conservation estate</u></p> <p>(iv) <u>Recreational values, especially tramping and hunting</u></p> <p>(v) <u>Historical values associated with early recreation, hunting and botanical exploration</u></p>	

Outstanding Natural Features or Landscapes	Characteristics / Values	Other values
(i) <u>The skyline of the Tararua Forest Park Ranges (Figure F:9)</u>	<p>(vi) <u>Cultural values</u></p> <p>(i) <u>Visual and scenic characteristics, particularly its prominence throughout much of the Region and its backdrop vista in contrast to the Region's plains</u></p> <p>(ii) <u>Ecological values, including values associated with mature indigenous forest, remnant and regenerating indigenous vegetation and important habitat</u></p> <p>(iii) <u>Contribution to the national conservation estate</u></p> <p>(iv) <u>Recreational values, especially tramping</u></p> <p>(v) <u>Historical values associated with early recreation</u></p> <p>(vi) <u>Cultural values</u></p>	
(ia) <u>The skyline of the Ruahine and Tararua Ranges - defined as the boundary between the land and sky as viewed at a sufficient distance from the foothills so as to see the contrast between the sky and the solid nature of the land at the crest of the highest points along ridges. The skyline is a feature that extends along the Ruahine and Tararua Ranges beyond the areas in (h) and (i) above</u>	<p>(i) <u>Visual and scenic characteristics, including aesthetic cohesion and continuity, its prominence throughout much of the Region and its backdrop vista in contrast to the Region's plains</u></p> <p>(ii) <u>Importance to tangata whenua and cultural values</u></p> <p>(iii) <u>Ecological values including values associated with remnant and regenerating indigenous vegetation</u></p> <p>(iv) <u>Historical values</u></p> <p>(v) <u>Recreational values</u></p>	
(j) <u>Manawatu Gorge, from Ballance Bridge to the confluence of the Pohangina and Manawatu Rivers, including the adjacent scenic reserve (Figure F:10)</u>	<p>(i) <u>Visual and scenic characteristics, particularly provided by its distinctive landscape</u></p> <p>(ii) <u>Geological feature, provided by being the only river in New Zealand to drain both east and west of the main divide</u></p> <p>(iii) <u>Ecological significance, provided by its regenerating indigenous vegetation and remnant native shrubland</u></p> <p>(iv) <u>Scientific value, particularly for its geology</u></p>	<p>(i) Ecological significance, provided by its regenerating indigenous vegetation and remnant native shrubland</p> <p>(ii) Scientific value, particularly for its geology</p>
(k) <u>Coastline of the Region, particularly the Akitio Shore Platform, Castlecliff to Nukumaru coastal cliffs, Foxtangi Dunes</u>	(i) <u>Visual and scenic characteristics, particularly its special coastal landscape</u>	(i) Ecological value, particularly the Whanganui, Whangaehu, Turakina and Rangitikei river

Outstanding Natural Features or Landscapes	Characteristics / Values	Other values
<u>and Hokio Beach South Dune Fields (Figures F:11 and F:12)</u>	features including the <u>Waitotara ventifacts at Waitotara River Mouth, Waitotara Estuary fossil forest and Santoft parabolic dunes</u> (ii) <u>Coastal geological processes</u> (iii) <u>Ecological value, particularly the Whanganui, Whangaehu, Turakina, Rangitikei, Akitio, Ohau, Waikawa and Manawatu River estuaries as habitats for indigenous fauna</u> (iv) <u>Recreational value</u> (v) <u>Significance to tangata whenua</u> (vi) <u>Scientific and educational values</u>	<u>estuaries as habitats for indigenous fauna</u> (ii) <u>Recreational value</u> (iii) <u>Significance to tangata whenua</u> (iv) <u>Scientific value</u>
(m) <u>Cape Turnagain (Figure F:13)</u>	(i) <u>Visual and scenic characteristics, particularly its visual prominence along the Region's east coast</u> (ii) <u>Ecological significance, particularly as a habitat for blue penguins and fur seals</u> (iii) <u>Scientific value</u> (iv) <u>Significance to tangata whenua</u> (v) <u>Historic heritage as an archaeological site</u>	(i) <u>Ecological significance, particularly as a habitat for blue penguins and fur seals</u> (ii) <u>Scientific value</u> (iii) <u>Significance to tangata whenua</u> (iv) <u>Historic heritage as an archaeological site</u>

Note:

There are a number of other areas within the Region that are highly likely to be regionally, if not nationally, outstanding natural features and landscapes. Some of these areas were included in the previous operative Regional Policy Statement but were not included in the One Plan as notified. Consequently, these areas have not currently been included in Schedule F due to a need for the Regional Council to either consult with affected landowners or undertake further studies of the areas using the approach set out in Policy 7-7A and the criteria listed in Table 7.2.

These areas include, but are not limited to:

- (i) Central North Island tussocklands
- (ii) Eastern Desert Road landscape
- (iii) Moawhango Ecological Region including the Moawhango Gorge, Makirikiri Tarns and Reporoa Bog, and the Kutaroa and Otahupitara Swamps (Irirangi Swamp)
- (iv) Waimarino – Erua – National Park fault scarp
- (v) Western Edge of the Volcanic Plateau
- (vi) Landguard Bluff
- (vii) Lake Horowhenua and its margins
- (viii) Lake Papaitonga and its adjacent scenic reserve

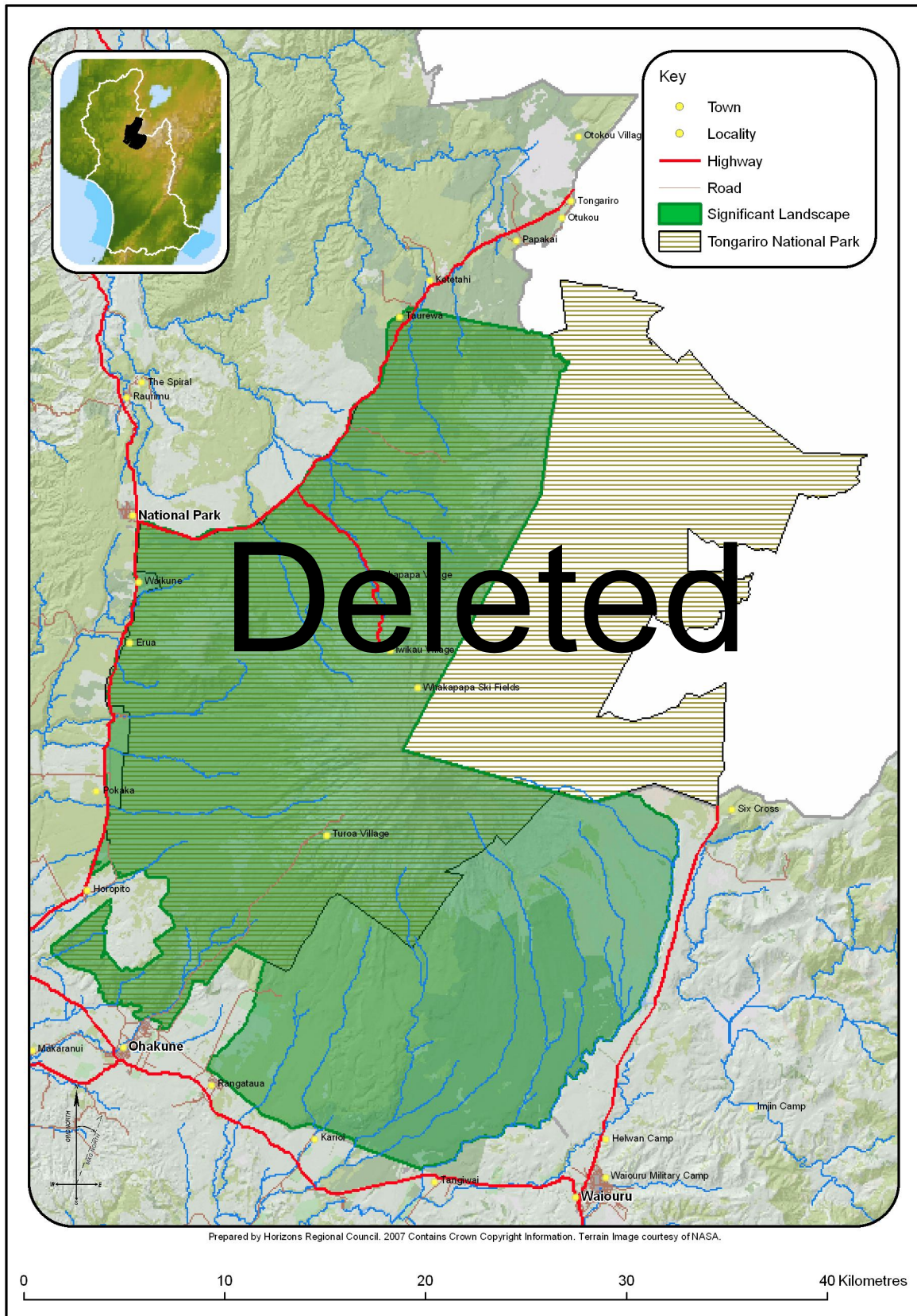


Figure F:1 Tongariro National Park and Rangipo Desert



Figure F:2 Whakapapa River

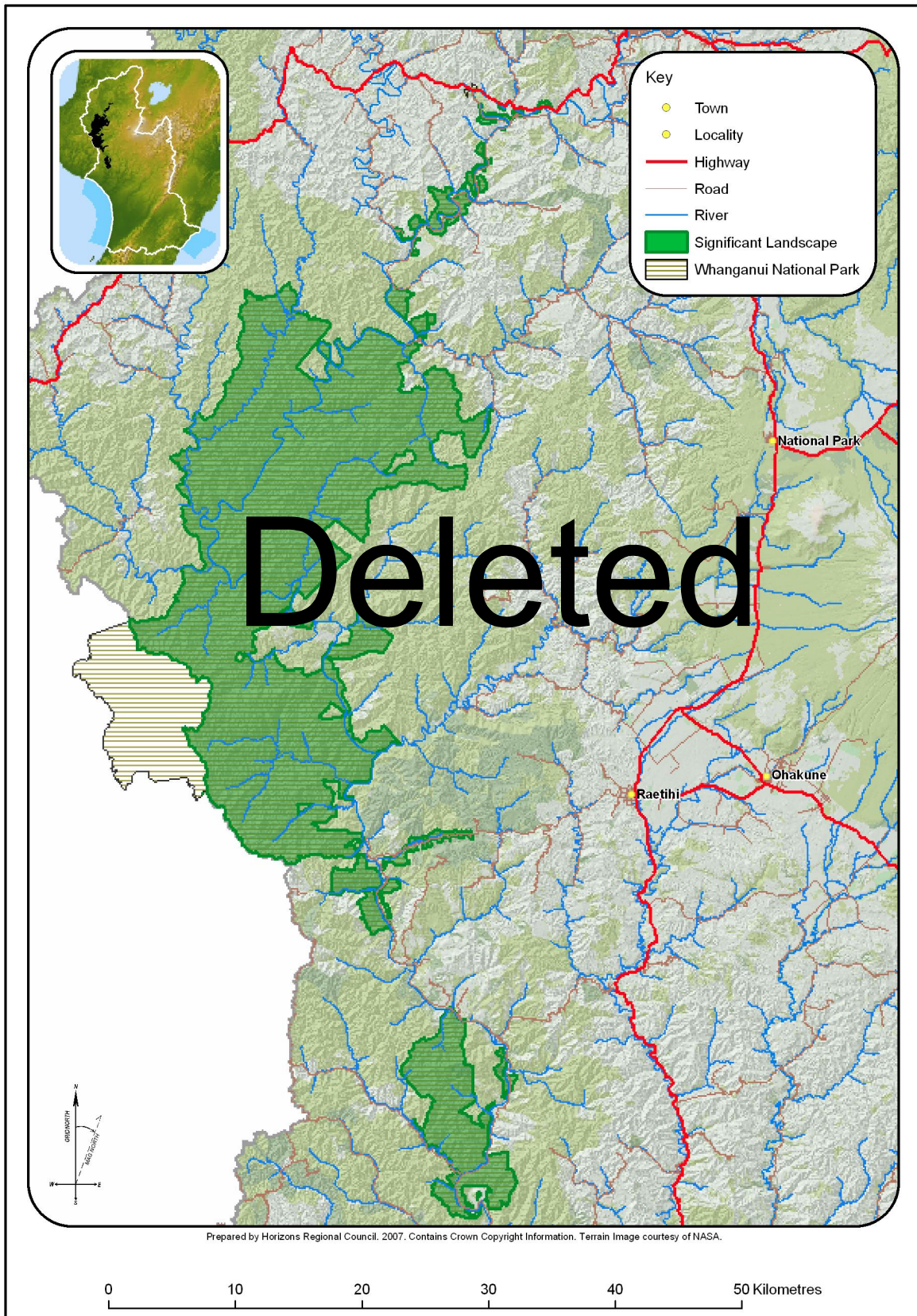


Figure F:3 Whanganui National Park

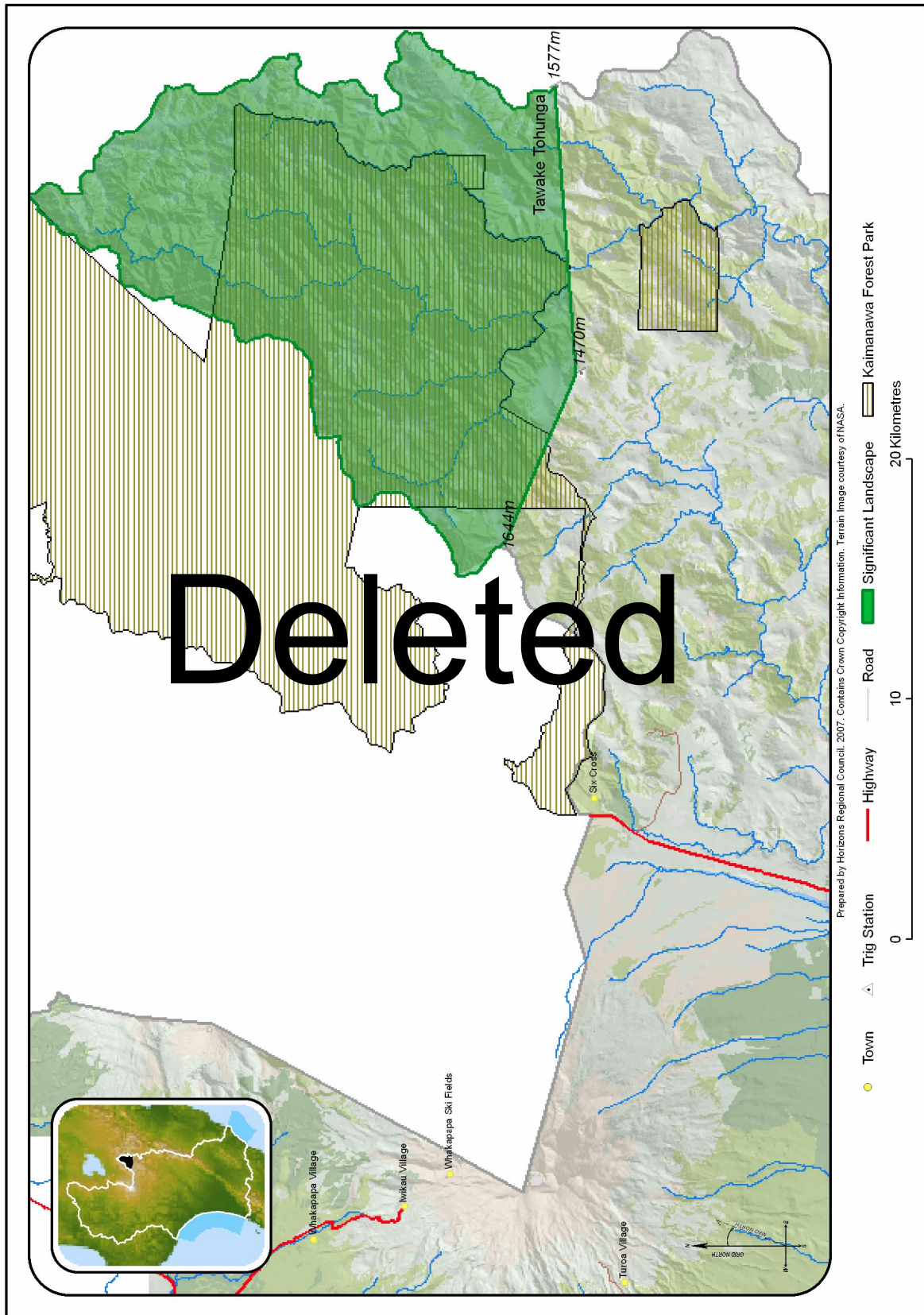


Figure F:4 Kaimanawa Ranges



Figure F:5 Mount Aorangi



Figure F:6 Manganui-o-Te-Ao River

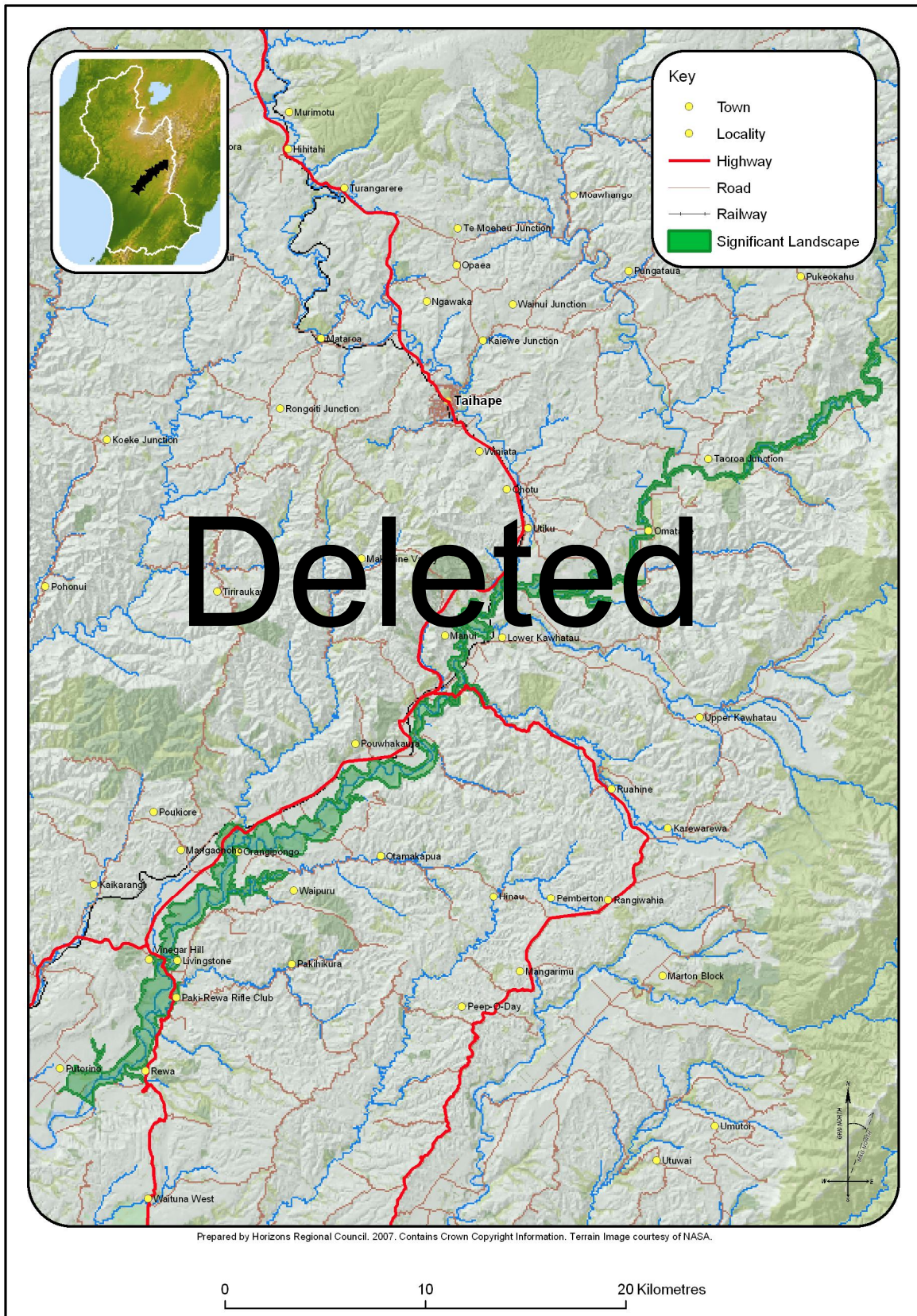


Figure F:7 Rangitikei River

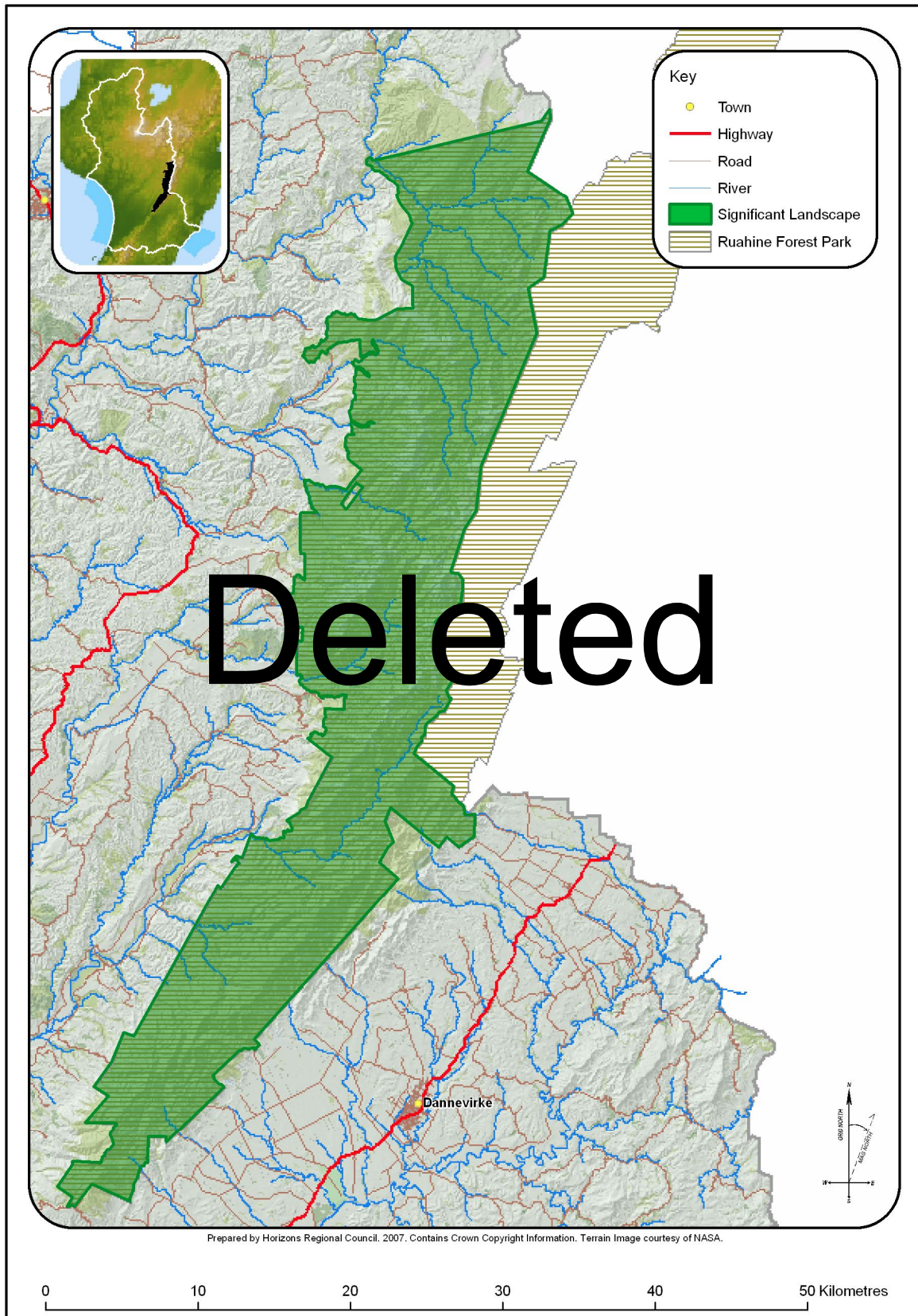


Figure F:8 Ruahine Ranges



Figure F:9 Tatarua Ranges



Figure F:10 Manawatu Gorge



Figure F:11 West Coastline



Figure F:12 East Coastline



Figure F:13 Cape Turnagain