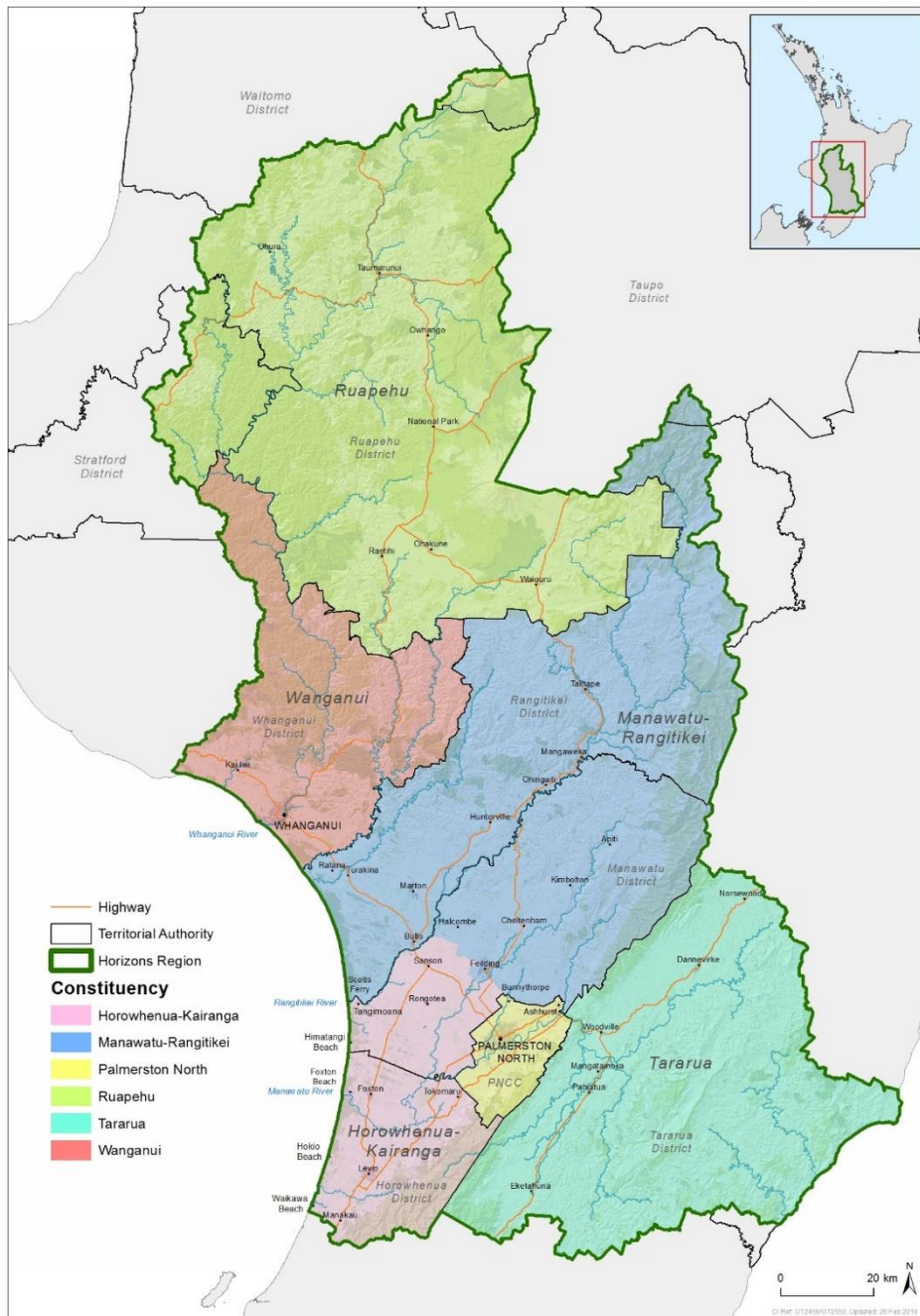


Horizons is reviewing its representation arrangements

to make sure they still deliver our communities effective and fair representation on their regional council. Horizons proposes keeping the existing arrangements for the next two local body elections. You can tell us what you think until 12 noon on Monday, 14 May 2018.



Representing you

Horizons Regional Council is made up of twelve councillors from six constituencies who are elected by the voting public every three years.

Councillors govern Horizons through committee and council meetings where they set policy direction and monitor the progress of Horizons' activities.

Constituency	No. of Members	Estimated Population ⁺
Horowhenua-Kairanga	2	40,300
Manawatu-Rangitikei	2	37,400
Palmerston North	4	87,300
Ruapehu	1	12,900
Tararua	1	17,800
Wanganui	2	44,500
	12	

⁺ Source: Statistics New Zealand as at 30 June 2017

Regional, city or district council – what’s the difference?

While your city or district council is responsible for community services in your area, like road maintenance, libraries, recreation areas, land use and subdivisions, your regional council manages the natural resources (such as water, land, air and the coast) and does so across several city/district council boundaries. As these activities often cover large geographic areas, Horizons manages them for the benefit of the whole region.

Although our roles are different, we work closely with city and district councils on some issues. Many of these Councils will be carrying out separate representation review processes in 2018.



How you can get involved

Horizons is consulting on its representation review from 10 April to 14 May 2018. Visit our website www.horizons.govt.nz and check out the 'Current Consultation' page for more information on how to tell us what you think.

What we do

Managing our environment

A large percentage of our work is done in this area. This covers five main activities: land management, water quantity and quality management, habitat protection, regulatory (resource consents and environmental compliance) and strategic management. Air, coast, pest plant and pest animal management strategies and waste issues are also part of this group of activities.

Keeping people safe

We have responsibilities to manage risk from natural and man-made hazards in the region. Our key role is to identify potential hazards and risks to people, property, infrastructure, the environment and the economy through activities including biosecurity, flood protection and control, and emergency management.

Getting people places

We plan passenger transport services for the region, subsidise bus services in areas where they cannot be provided commercially, manage the Total Mobility service which provides transport for people with disabilities and mobility restrictions, organise community road safety education and activities, and coordinate the Regional Transport Committee.

The Horizons Region:

- Covers 10 local authorities, 7 completely within its boundaries
- Horizons' jurisdiction extends 12 nautical miles out to sea
- Covers 22,212 km² of land, 8.1% of New Zealand's land area
- 160 km of coastline, with the Tasman Sea to the west and Pacific Ocean to the east
- Is home to approximately 240,300 people

Find out more about us

Keep an eye out for Across the Region, our quarterly publication, which features in local papers throughout the region. Also check out www.horizons.govt.nz for the latest news and information.

You are also welcome to attend our Council meetings, generally held on the last Tuesday of every month at Regional House in Victoria Avenue, Palmerston North. Check the public notices section of your local paper or our website for dates and times.