

your rates explained

2011 - 2012



You are one of more than 106,000 ratepayers in the Horizons Region who contribute to the growth of our Region.

Horizons Regional Council manages the land, air and water and creates opportunities for our Region to grow, not just economically but in a way that supports the environment.

It's important you understand how your rates help us go about this. This newsletter summarises some

of our key projects for the year ahead so you can find out more about what we do.

Thank you for your role in making the Horizons Region a great place to live, work and play.

A handwritten signature in black ink, appearing to read "Bruce Gordon".

Bruce Gordon
Chairman - Horizons Regional Council



Keeping you safe

Keeping you, your property and the environment safe is a major part of what we do. Whether it's from natural hazards like floods, or man-made dangers like oil spills, our job is to protect you and your livelihood.

This year we'll continue to maintain more than 460km of stopbanks, 700km of drains, 20 pumping stations and 53 dams to protect the Region from flooding.

In Wanganui, we'll begin designing the second stage of the Lower Whanganui Flood Protection Scheme and be talking to the community about their views on this.

Work on the Lower Manawatu Flood Protection Scheme will continue as we enter year six of the 12- year project. For those living in the Taonui Basin area, we'll be putting in a new pump station at Burkes Drain to help get water out of the spillway faster during floods.

In Ashhurst we'll be spending \$420,000 to increase flood protection to the 100-year level.

We will continue to provide support to Maritime New Zealand to improve safety on the Whanganui River, and next year we'll consider introducing a bylaw on the lower Whanganui River to control speed and safe river use.



Getting you places

Wherever you need to get to in our Region, we want to get you there efficiently and safely.

The Horizons Regional Council Land Transport Strategy sets the plan for transport in the Region for the next 30 years. From road networks to state highways, cycling to public transport, we need to plan carefully for the future so we can maintain the ease with which we get around.

It's our role to provide public transport throughout the Region, allowing people in our communities to save money on petrol and vehicle costs, while also helping the environment.

We subsidise public transport for the elderly, students and beneficiaries, and run the total mobility service for people with disabilities.

We're also involved in educating the community about road safety.



Managing your environment

We manage the Region's land, air and water through issuing and monitoring consents to ensure the sustainable use of our resources. It's not all about rules and regulations though. We also support landowners in other ways, from planting trees to prevent erosion, fencing waterways to keep stock out of streams or preserving our native bush and wildlife.

We fight against pests and also teach the community how to recognise pests and weeds in their patch of the Region.

In response to our communities' desire to continue support the Animal Health Board's Tb prevention programme, we'll be collecting \$750 000 through levies on properties 4 hectares or above. Horizons' own \$2.4million possum control programme will also continue.

Water quality remains a priority and we'll continue checking and improving our streams, rivers and lakes through consents and compliance monitoring, environmental grants and programmes such as our Sustainable Land Use Initiative. As part of Horizons' commitment to the Manawatu River Leaders' Accord, this year will also see us put an extra \$400,000 towards improving water quality in the Manawatu River.



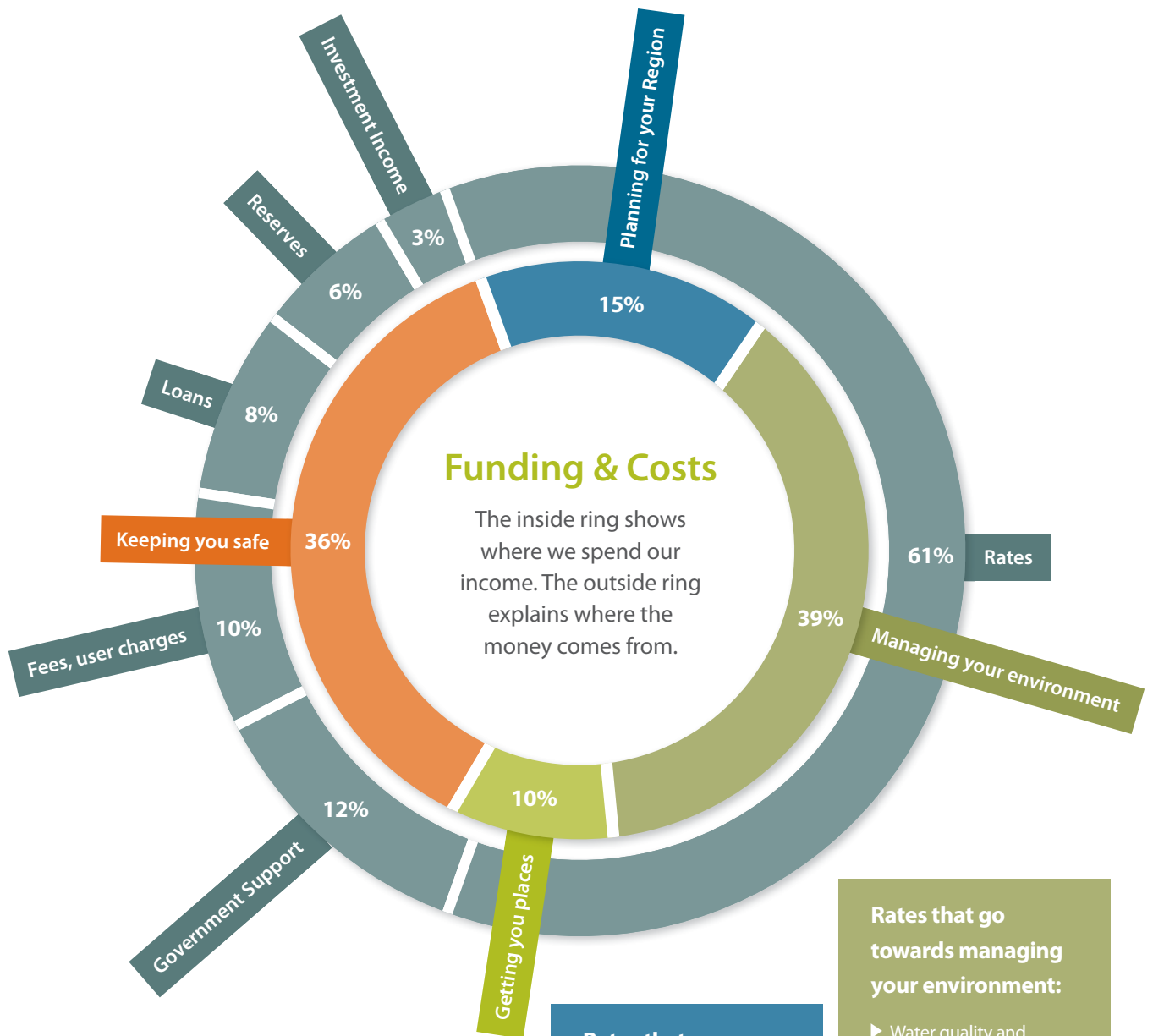
Planning for your Region

There are a number of important things that happen in the background to ensure we continue to grow as a Region.

To make the best decisions on how to look after the Region we need accurate and timely information. Whether it is about river levels, water quality or working out where flood water will go, our staff and councillors are reliant on accurate information to do their jobs.

This information is also used to come up with long-term strategies for the management of our environmental resources. This year will see us undertake our Long Term Plan, which looks at how our Region will be managed for the next ten years.

The information Horizons staff collect is available to the public. We believe it's important you understand the work we do so you can ask questions or make suggestions about how your money is spent.



Rates that go towards keeping people safe:

- ▶ Emergency management
- ▶ River and drainage
- ▶ Scheme rates

Rates that go towards getting you places:

- ▶ Transport - safety and planning
- ▶ Transport - services

Rates that go towards planning for your Region:

- ▶ Strategic management
- ▶ Information
- ▶ General rate
- ▶ Uniform Annual General Charge

Rates that go towards managing your environment:

- ▶ Water quality and quantity
- ▶ Biosecurity
- ▶ Consent management
- ▶ Environmental Initiatives
- ▶ Sustainable Land Use Initiative
- ▶ Pest Plant Management
- ▶ General rate
- ▶ AHB TB Vector levy

For a more thorough breakdown refer to our annual plan online at www.horizons.govt.nz/annualplan

Contact us

If you have any questions please get in touch.



landairwater
community

Private Bag 11025
Manawatu Mail Centre
Palmerston North 4442

T 0508 800 800
F 06 952 2929
E help@horizons.govt.nz
f www.facebook.com/horizonsrc
www.horizons.govt.nz