

COMPLIANCE TEAM REPORT

PURPOSE

1. This item provides a report of the Compliance Team's activities for the period 1 November 2008 - 31 January 2009.

COMMENT

2. The Compliance Team undertakes a number of activities including monitoring resource consents, responding to environmental complaints/incidents, formally investigating breaches of the Resource Management Act (1991), writing hearing reports, managing the water allocation project, providing RMA advice and manning the pollution hotline during working hours.
3. Environmental incidents are reported to Horizons Regional Council via the pollution hotline, the frontline system or by other Horizons Regional Council staff. Incidents reported are responded to according to the urgency, the significance and the effect on the environment. Every effort is made to respond to identified urgent incidents within four hours of the call being received. Non-urgent incidents are responded to within two working days of the call.
4. Compliance staff continue to undertake resource consents inspections in all sectors, but are primarily focussing on water abstractions and discharges to water from industries and Territorial Authorities.
5. The dairy programme is continuing and statistics are as detailed below. Non-compliances are generally due to increases in stock numbers above consented volumes, addition of feedpads and not carrying out sampling when required. Significant non-compliances were primarily overflowing sumps and ponds onto land from where the discharges entered waterways.

Dairy Statistics

Number of dairy sheds in our Region	Number inspected to date	Compliance rate	Non-compliance rate	Significant non-compliance rate
938	395	71% (282)	10% (40)	18% (73)

Re-inspections

Number of dairy sheds requiring revisits	Number of re-visits undertaken	Compliance rate	Non-compliance rate	Significant non-compliance rate
73	54	94% (51)	0%	6% (3)

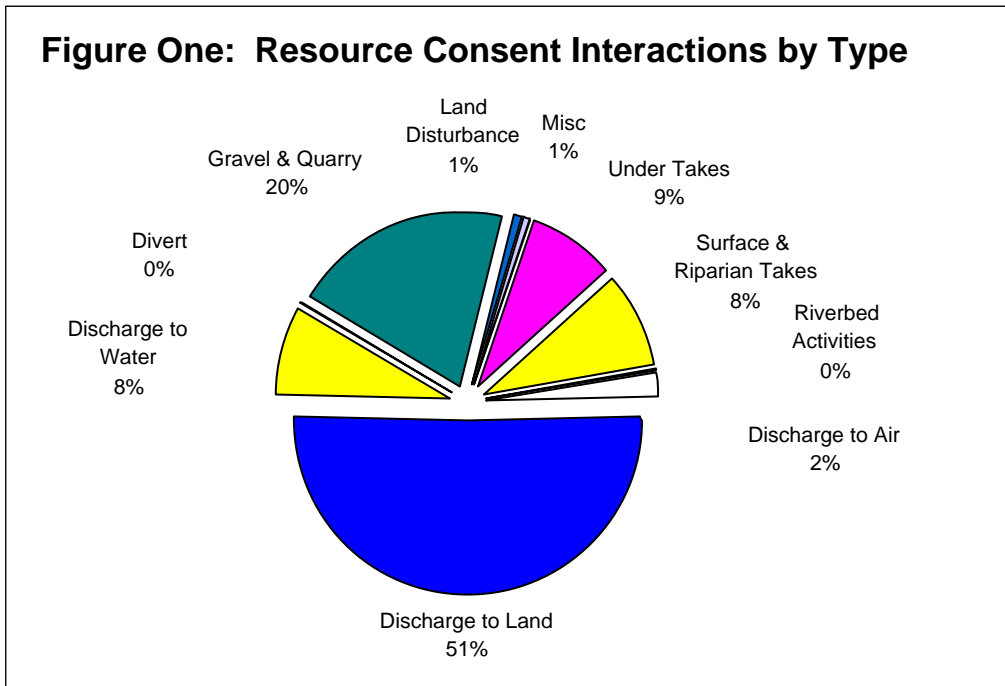
Enforcement actions

Significant non-compliance rate	Abatement notices issued	Infringement notices issues	Potential for further enforcement action
18%	92	50	2

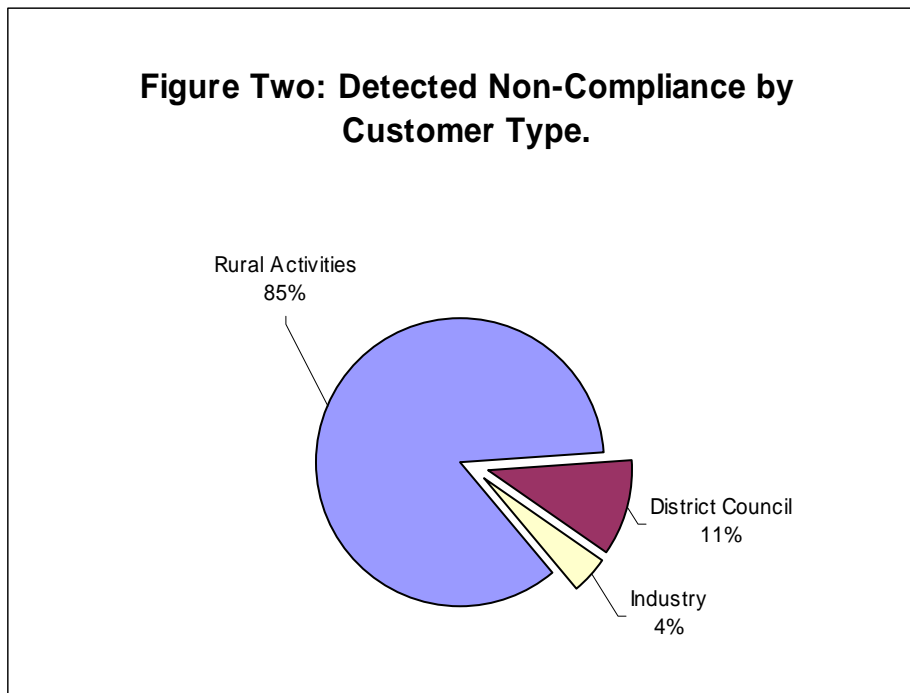
6. The Council completed one prosecution over the reporting period. The decision to prosecute is not taken lightly by Horizons. In relation to the two prosecutions identified below, the determination to prosecute was supported by the courts.
7. Tararua District Council (TDC) had pleaded guilty and was convicted for the unauthorised abstraction of water and failure to comply with an Abatement Notice. Judge Ross remarked in this judgement that TDC failed to heed warnings, there was a repeated and deliberate nature of offending, it failed to take appropriate steps and take them in a timely manner and failed to take regulatory steps in response to the Abatement Notice, given that TDC was an enforcing agency itself. Horizons Regional Council was awarded a total of approximately \$25,000 in fines and costs.
8. Horizons Regional Council has eight cases currently before the District Court:
 - a. Tawara Land Company & Kenneth William Thurston – found guilty on all 10 charges – sentencing due 16 February 2009.
 - b. Aotearoa Coolstores Limited & Kenneth William Thurston – defended hearing due 16 February 2009.
 - c. Tatana Contracting – defended hearing due March/May 2009.
 - d. Horowhenua District Council/Downer EDI/Tatana Contracting – referred to Environment Court, dates TBA.
 - e. Last – status hearing, dates TBA.
 - f. Funnell – status hearing, dates TBA.
 - g. Powera Holdings Limited – status hearing, dates TBA.
 - h. One further case has had charges laid in court but the party cannot be named at this stage.

Two further cases have been signed off for prosecution and files are being completed by staff and Horizons' lawyers. One case is currently being investigated and we will seek approval for the laying of charges in the District Court.

9. During the reporting period, 343 interactions for compliance monitoring occurred with consent holders. Sixty-two of these interactions were phone calls to consent holders to arrange visits or to advise on river flows. The other 283 interactions were either physical inspections or time spent assessing data or reports provided by the consent holder.
10. Compliance monitoring interactions by consent type is given in Figure One.



11. Forty-one non-compliances were detected over the reporting period, from the 283 resource consents monitored. This equates to a 14 percent non-compliance rate for the reporting period, which is an increase from 11 percent over the previous period. A breakdown of non-compliances by customer is given in Figure Two.

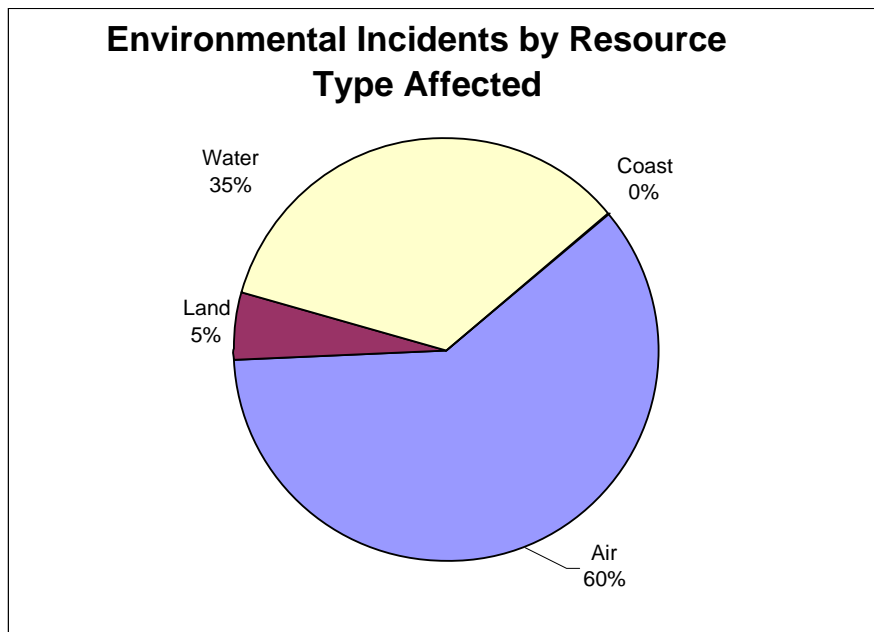


12. As stated, 41 non-compliances were detected during this period. Details of these non-compliances are provided in Table 1. The cost of inspecting these activities was recovered from the resource consent holders in accordance with the Annual Plan.
13. Twenty-eight infringement notices were served during this period for breaches of regional rules or resource consent conditions. Details of these infringement notices are provided in Table 2.

14. Thirty-one abatement notices were served during this quarter, requiring activities to cease or remedial action to be taken to stop an adverse effect. The details of these abatement notices are provided in Table 3. Where the abatement notice is issued to a company, copies are also sent to the company directors.
15. There were a total of 113 incidents reported over this period. Thirty-seven were reported in November, 34 in December and 42 in January. The volume of incidents has remained similar to previous reporting periods.
16. A summary of environmental incidents is presented in the table and graph below.

Resource Affected	Effect	Source	Number of Incidents	Number of Complainants	Number of Locations	
Air (68)	Smoke (Urban)	Burning material	5	5	5	
		(Rural)	17	17	17	
		(Industrial)	5	5	5	
	Fumes	Petrol/exhaust	10	4	4	
		Spray drift	2	1	1	
	Odour	Sewage/effluent	9	9	9	
		Rotting meat/vegetation	13	13	9	
		Landfill/transfer station	5	3	1	
	Particulate	Dust/fertiliser	2	2	2	
		Subtotal		68	59	53
Land (6)	Contamination	Effluent	2	2	2	
		Rubbish	3	3	3	
		Vehicle	1	1	1	
		Subtotal		6	6	6
Water (39)	Contamination	Dead Animals/Offal	6	6	6	
		Vehicle	1	1	1	
		Dead eels	1	1	1	
		Milk	1	1	1	
		Industrial discharge	1	1	1	
		Effluent	8	8	8	
		Rubbish	10	10	10	
		Unknown	2	2	2	
		Abstraction	Surface watertake	3	3	3
		Other	Drainage	1	1	1
		Earthworks	5	5	5	
		Subtotal		39	39	39
		Subtotal		0	0	0
Coastal (0)	General	Dead stock	0	0	0	
		Subtotal		0	0	0
		TOTAL	113	113	113	

Figure Three:



Details of the significant incidents are presented below.

17. **AIR**

- Smoke complaints featured very highly over the reporting period with 27 complaints received. Odour complaints involving rotting meat or vegetation smells also featured highly with 13 complaints. Staff have been able in some cases to verify the odour or smoke as being objectionable and have issued abatement notices and infringement notices in these cases.

18. **LAND**

- Contamination of land with rubbish and effluent were noted this reporting period. In the majority of cases of dumping dead stock or offal there are no eye witnesses so enforcement action cannot be undertaken.

19. **WATER**

- Contamination of watercourses by dead stock, effluent and rubbish again features highly over the reporting period. In the cases of stock carcasses these have washed down rivers or, in the case of dumping, there are no eye witnesses so enforcement action cannot be undertaken. Staff have been able to inspect the majority of effluent discharges and taken enforcement action on these.

20. **COAST**

- No coastal incidents were reported over the period.

21. **RESPONSE TIME**

- Incidents are responded to according to their urgency, level of significance and effect on the environment. Incidents that require an immediate response are classified as “urgent” and a response is required within four hours of receipt of the notification. Non-urgent incidents require a response within two days of receipt of notification.

The table below shows the response rate for incidents over the reporting period.

Significance	Number of incidents	Response within required time	Response rate
Urgent	23	19	83%
non-urgent	90	68	76%
Overall	113	87	77%

There were some cases where the response was not within the required time period, generally due to prior work commitments in relation to ongoing investigations for potential enforcement action, or the requirements of the monitoring programme. Every effort is made to meet the response time.

Over this reporting period there was a significant improvement in the response rates for incidents. The previous overall response rate was 53%. This improvement has been mainly due to having a staff member undertaking the role of Incident Co-ordinator.

A F Russell
**MANAGER ENVIRONMENTAL
PLANNING
PROTECTION**

G Carlyon
**GROUP MANAGER REGIONAL
AND REGULATORY**

Table 1: REPORT OF NON-COMPLIANCE FOR NOVEMBER 2008 – JANUARY 2009

Consent holder	Activity	Location
Amey Farms Ltd 100886	Discharge to Land	SOLDIERS ROAD PALMERSTON NORTH
Routine - 4/11/2008 <ul style="list-style-type: none"> Discharge volume exceeded Non-compliance given Consent variation forms sent out		
C Wilton 103425	Gravel	124 HIMATANGI BEACH ROAD FOXTON
Complaint 15/01/09 <ul style="list-style-type: none"> Extracted gravel below 300mm above the adjacent water level Natural stream channel was not evident for the majority of the inspected area; gravel had been abstracted to the water level Evident vehicles had been driving within the wetted area of the bed of the Makuri-iti Stream Excavator was parked within the bed of the Makuri-iti Stream Evident that excavator had been leaking while it was working in the river bed Significant non-compliance given Abatement notice issued Investigation into this issue is ongoing		
CW&CP Pedersen 102484	Discharge to Land	124 HIMATANGI BEACH ROAD FOXTON
Routine - 27/11/2008 <ul style="list-style-type: none"> Milk-laden washdown water being discharged directly to the ground in tanker filling area, where it may enter a farm drain, being an unnamed tributary of Lake Kaikokopu Significant non-compliance given Abatement notice issued to Ballahooley Farming Limited (Copies to Consent Holder)		
DL&IM Sharland 101825	Discharge to Land	PENNY ROAD SANSON
Routine - 21/11/2008 <ul style="list-style-type: none"> Discharge volume exceeded Non-compliance given Consent variation forms sent out		

Consent holder	Activity	Location
DP&SA Nitschke 100777	Discharge to Land	PUKEPAPA ROAD MARTON

Complaint - 11/12/2008		
<ul style="list-style-type: none"> • Dried effluent from ponding in the paddock where the travelling irrigator had been operating. In places the dried effluent was over 5 centimetres deep • That effluent had been discharged within 20 metres of an ephemeral watercourse • That an ephemeral watercourse had been severely contaminated with effluent discharged from the travelling irrigator • That effluent discharged into the ephemeral watercourse had entered a subsurface drain <p>Significant non-compliance given Abatement notice issued Investigation into this issue is ongoing</p>		
Frecklington Farms Ltd 100481	Discharge to Land	ROSINA ROAD RONGOTEA
Routine - 4/11/2008		
<ul style="list-style-type: none"> • Effluent runoff from irrigator application entering the nearby watercourse • Increase in discharge volumes • Silage stack leachate entering a nearby farm drain <p>Significant non-compliance issued Abatement notice issued to Frecklington Farms Limited (Copies to WP Frecklington) Infringement notice issued to Frecklington Farms Limited (Copies to WP Frecklington) Follow-up inspection to be arranged</p>		
Frecklington Farms Ltd 100160	Discharge to Land	TANGIMOANA ROAD OHAKEA
Routine - 21/11/2008		
<ul style="list-style-type: none"> • Effluent being applied to land not authorised by resource consent • Feedpad effluent not authorised by resource consent <p>Non-compliance given Consent variation forms sent out</p>		
GA Burling 102496	Discharge to Land	STATE HIGHWAY 1 OROUA DOWNS FOXTON
Routine - 27/11/2008		
<ul style="list-style-type: none"> • Effluent being discharging from the pipeline between the dairymshed sump and the storage ponds, which appeared to have been occurring for some time <p>Significant non-compliance issued Abatement notice issued Infringement notice issued Follow-up inspection to be arranged</p>		

Consent holder	Activity	Location
GA Burling 102347	Discharge to Land	MAIN ROAD OROUA DOWNS
Routine – 27/11/2008		
<ul style="list-style-type: none"> • Effluent was discharging from the dairymshed stormwater diversion into a farm drain, which was an unnamed tributary of the Pukepuke Lagoon • Effluent was ponding in the area that had recently been irrigated 		

<ul style="list-style-type: none"> • Effluent had recently been irrigated to within 20 metres of a watercourse • Scrapings and solid effluent were being stored in a large pile within 20 metres of a watercourse <p>Significant non-compliance issued Abatement notice issued Infringement notice issued Follow-up inspection to be arranged</p>		
Gardiner Farms Ltd 102508	Discharge to Land	WHAKAHORO ROAD MANAKAU
<p>Complaint – 15/01/09</p> <ul style="list-style-type: none"> • Complaint from member of the public as effluent being irrigated within 20 metres of the property boundary and spraying onto the road • Ongoing issues with approach to Waikawa Stream crossing, which was still covered with effluent and was flowing and sitting in the stream. Samples taken downstream show that E.coli levels do not meet the standards for stock drinking water and contact recreation <p>Significant non-compliance given Abatement notice previously issued on 18/09/09 Fonterra to be advised regarding this stock crossing and water quality issues Advised that s17 of the RMA may be used to rectify this situation</p>		
GH Dear 102473	Discharge to Land	357 TAIPO ROAD RONGOTEA
<p>Routine – 21/11/2008</p> <ul style="list-style-type: none"> • Effluent overflowing from south western end of the second effluent storage pond, which is an unnamed tributary of the Makowhai Stream <p>Significant non-compliance issued Abatement notice issued Infringement notice issued Follow-up inspection to be arranged</p>		
GJ&PA Lowe 100023	Discharge to Land	ROWE ROAD RONGOTEA
<p>Routine -21/11/2008</p> <ul style="list-style-type: none"> • Effluent solids removed from the stone trap stored alongside the farm drain <p>Significant non-compliance given Abatement notice issued</p> <p>Follow up inspection on the 23/01/09 – Complied</p>		

Consent holder	Activity	Location
Glenheath Farming Co Ltd 101437	Discharge to Land	RICHMOND LIMITED ORINGI MEATWORKS STATE HIGHWAY 2 ORINGI
<p>Client's report - 17/11/2008</p> <ul style="list-style-type: none"> • Annual report presented showed the cumulative nitrogen loading graph exceeded the 600kg/N/yr limit • Monitoring parameters of base saturation and sodium absorption ratio (SAR) were not measured <p>Non-compliance given</p> <p>Note: Silver Fern Farms Ltd (Oringi) now closed, therefore no requirement to discharge meatworks</p>		

processing wastewater. No recommendations were made to resolve non-compliances as discharges have ceased		
Hartridge Family Trust 102750	Surface Take	HAMOA ROAD DANNEVIRKE
Routin e – 21/01/2009 <ul style="list-style-type: none"> Exceeded authorised abstraction Abatement Notice 299 issued in 8 February 2008 to "cease the unauthorised abstraction of water from the Tamaki River located in the vicinity of Wi Duncan Road, Dannevirke, being the abstraction of water greater than that authorised by condition 1 of Resource Consent 102750, to ensure that further non-compliances with this consent and offences against the RMA do not occur " Significant non-compliance given Infringement notice issued for the breach of authorised limit Infringement notice issued for the breach of Abatement Notice 299		
Horowhenua District Council 102904	Misc.	FOXTON BEACH CAR PARK MARINE PARADE FOXTON BEACH
Routin e - 19/11/2008 <ul style="list-style-type: none"> Unauthorised addition / alteration to the Foxton Seawall Significant non-compliance given Abatement notice issued to remove unauthorised seawall fill Infringement notice issued Advised to submit an adequate variation to the existing consent Follow-up inspection – complied with abatement notice		
IS Cocker 6673	Discharge to Land	WAITOHI ROAD RONGOTEA
Routin e - 21/11/2008 <ul style="list-style-type: none"> Feedpad effluent not authorised by resource consent Non-compliance given Consent variation forms sent out		
J & J Griffin 4085	Discharge to Land	JEFFERSONS LINE MARTON
Routin e - 19/11/2008 <ul style="list-style-type: none"> Discharge volume exceeded Non-compliance given Consent variation being processed		
Consent holder	Activity	Location
JD Rowbotham 100972	Discharge to Land	TANGIMOANA ROAD RONGOTEA
Routin e – 21/11/2008 <ul style="list-style-type: none"> Discharge volume exceeded Non-compliance given Consent variation forms sent out		
JJ&DJ Barrow 102482	Surface take	KIRITAKI ROAD DANNEVIRKE
Routin e – 26/01/2009 <ul style="list-style-type: none"> Water meter installation not carried out 		

Significant non-compliance given Advised to have installation completed by 5 February 2009		
KR&SD Farrier 102333	Discharge to Land	MILNER ROAD GLEN OROUA
Routine – 27/11/2008		
<ul style="list-style-type: none"> Discharge volume exceeded Feedpad effluent not authorised by resource consent 		
Non-compliance given Consent variation forms sent out		
M&K Cowan 4900	Discharge to Land	OROUA VALLEY ROAD APITI
Follow up – 9/12/2008		
<ul style="list-style-type: none"> Effluent pond was overflowing from the south western corner of the pond Effluent had ponded for approximately 100 metres and some areas were 3 metres wide 		
Significant non-compliance given Abatement notice issued Infringement notice issued		
Follow-up inspection to be arranged		
Maire Farms Ltd 103267	Discharge to Land	SH 1 BETWEEN RONGOTEA AND ROWE ROAD PALMERSTON NORTH
Routine – 4/11/2008		
<ul style="list-style-type: none"> Discharge volume exceeded 		
Non-compliance given Consent variation forms sent out		

Consent holder	Activity	Location
Makowhai Farms Ltd 100783	Discharge to Land	TANGIMOANA ROAD OHAKEA
Routine - 21/11/2008		
<ul style="list-style-type: none"> Discharge volume exceeded 		
Non-compliance given Consent variation forms sent out		
Manawatu District Council 101840	Discharge to Water	FEILDING SEWAGE TREATMENT PLANT KAWAKAWA ROAD FEILDING
Client's report - 23/01/2009		
<ul style="list-style-type: none"> Effluent quality exceedences for E.coli levels Exceedences in Particulate Organic Matter (POM) concentrations downstream of the discharge Exceedences of ammonia limits 		
Significant non-compliance given Advised to investigate methods of ensuring compliance with the limits if not operating the phosphorus dosing		

plant Advised to identify methods for reducing the ammonia concentration in the discharge to prevent further non-compliances occurring		
Middle Earth Farms Ltd 102584	Discharge to Land	MANSON SIDING OWHANGO
Complaint - 12/11/2008 <ul style="list-style-type: none"> Ponding from irrigated dairyshed effluent (stationery irrigator) Exceeded effluent loading Significant non-compliance given Advised to consider an alternative spreading method Phonecall – advised travelling irrigator purchased (charge reversed)		
Mitchpine Products Ltd 101808	Discharge to Land	STATE HIGHWAY ONE FOXTON
Routine – 10/11/2008 <ul style="list-style-type: none"> Treated timber overhanging the drip pad One set of sediment samples were above the consented limits for copper, chromium and arsenic (CCA) Consent requires that if consistent breaches are detected then an investigation must be done to identify and minimise the sources of the contamination Sludge samples from the ponds indicate contamination with copper, chromium and arsenic, (CCA); this contamination has been consistent over the period of this consent Some results for suspended solids from the settling pond breach resource consent condition Non-compliance given Advised to identify the reason for the breach in the sediment samples Advised that any sediment removed from the ponds will need to be disposed of as contaminated waste, given the contamination indicated by the sludge samples Follow-up inspection to be arranged		

Consent holder	Activity	Location
Palmerston North City Council 103832	Divert	PROPOSED FOODSTUFFS INTERNATIONAL SITE - ROBERTS LINE TO RAILWAY ROAD PALMERSTON NORTH
Routine - 22/12/2008 <ul style="list-style-type: none"> Stormwater system diverting water in direction not authorised by resource consent Significant non-compliance given Follow-up inspection to be arranged		
PJ&BM Tennant 100159	Discharge to Land	PENNY ROAD PALMERSTON NORTH
Routine - 21/11/2008 <ul style="list-style-type: none"> Discharge volume exceeded Non-compliance given Consent variation forms sent out		
Porewa Holdings Ltd 102206	Discharge to Land	POREWA ROAD MARTON
Follow up – 25/11/2008		

<ul style="list-style-type: none"> Abatement notice to removed solids had been complied with Effluent was flowing down the farm drain from an area of ponded effluent in a paddock <p>Significant non-compliance given Abatement notice issued (copies sent to directors M & H McAloon) Infringement notice issued</p> <p>Further follow-up inspection to be arranged</p>		
RA Fullerton-Smith 4213	Discharge to Land	GALPIN ROAD R D 2 MARTON
<p>Routine - 25/11/2008</p> <ul style="list-style-type: none"> Discharge volume exceeded <p>Non-compliance given Consent variation forms sent out</p>		
Riverina Farms 103044	Suface Take	MANAWATU RIVER BLUFF ROAD KUMEROA WOODVILLE
<p>Routine – 09/01/2009</p> <ul style="list-style-type: none"> Exceeded meter accuracy verification (130%) <p>Non-compliance given Given two weeks to attend to meter accuracy</p>		

Consent holder	Activity	Location
Riverside P/Ship 100172	Discharge to Land	TANGIMOANA ROAD TANGIMOANA
<p>Routine - 4/11/2008</p> <ul style="list-style-type: none"> Effluent was discharging into a farm drain from the concrete exit point on the raceway Sampling results indicated that the discharge was not excessive <p>Significant non-compliance given Abatement notice issued (copy to Paul Harris)</p> <p>Follow-up inspection to be arranged</p>		
RJ&MH McVitty 101129	Discharge to Land	OMANUKA ROAD OROUA DOWNS
<p>Routine - 27/11/2008</p> <ul style="list-style-type: none"> Large amount of ponded effluent in paddock Discharge volume exceeded <p>Significant non-compliance given Abatement notice issued Infringement notice issued</p> <p>Follow-up inspection to be arranged</p>		
Sexton Land Co 103765	Discharge to Land	HIMATANGI BEACH ROAD FOXTON

Routine - 27/11/2008		
<ul style="list-style-type: none"> Effluent ponding in recently irrigated area 		
Significant non-compliance given		
Abatement notice issued (copies sent to Basil, Dean and Jennifer Sexton)		
Follow-up inspection to be arranged		
TM & EM Knight Family Trust 3903	Discharge to Land	MOTUITI ROAD FOXTON
Client's reports – 3/11/2008		
<ul style="list-style-type: none"> Exceeded consent discharge volumes 		
Non-compliance given		
TM & EM Knight Family Trust 103114	Discharge to Land	484 AND 560 MOTUITI ROAD FOXTON
Client's reports – 5/11/2008		
<ul style="list-style-type: none"> Exceeded consent discharge volumes 		
Non-compliance given		

Consent holder	Activity	Location
WA Flipp 102286	Discharge to Land	OMANUKA ROAD FOXTON
Routine 27/11/2008		
<ul style="list-style-type: none"> Exceeded consent discharge volumes 		
Non-compliance given		
Walsh Estate P/Ship J J & G N 6817	Discharge to Land	CLIFF ROAD MARTON
Routine - 27/11/2008		
<ul style="list-style-type: none"> Exceeded consent discharge volumes 		
Non-compliance given		
Consent variation being processed		
Wanganui District Council 101706	Coastal Permit	LOCATED 1800 METRES OFF SOUTH BEACH WANGANUI
Routine - 18/11/2008		
<ul style="list-style-type: none"> High suspended solids and Enterococci results occurred in the discharge, which have regularly breached the consented limits Disposal of sludge from the bottom of the ponds to the outfall is not authorised by the consent Discharges of wastewater to land via the spillway from the ponds is not authorised by resource consents 		
Significant non-compliance given		
Advised that will require resource consent relating to the disposal of wastewater to land via the emergency overflow spillway and the disposal of sludge from the bottom of the ponds.		
Note: It appeared that the consents for the wastewater treatment plant discharge were granted prior to the		

complete design of the plant and the above mentioned activities were not assessed as part of the consent.		
WF&MT Dorn 3900	Discharge to Land	MOTUITI ROAD FOXTON
Client's reports – 5/11/2008		
<ul style="list-style-type: none"> Exceeded consent discharge volumes 		
Non-compliance given		
Windburn View Ltd 104234	Discharge to Land	310 HEWITTS ROAD LINTON
Complaint - 16/12/2008		
Effluent discharged through the irrigator had runoff into a small ephemeral watercourse. The watercourse was contaminated with effluent for at least 630 metres.		
Significant non-compliance given		
Abatement notice issued (copies to Robert and Glen Crafar and Sam Webb)		
Infringement notice issued		
Follow-up inspection to be arranged		

Table 2: INFRINGEMENT NOTICES ISSUED NOVEMBER 2008 – JANUARY 2009

An Infringement Notice is a fine issued by an enforcement officer under delegation from the Environmental Protection Manager, to a person in breach of sections in the Resource Management Act 1991.

Consent Holder / Responsible Party	Section of Act Contravened	Details
Porewa Holdings Limited	15(1)(b)	Unauthorised discharge of dairy effluent
10 Nov 08 Porewa Road Marton		
James Bull trading as Mellington Dairy	15(1)(b)	Unauthorised discharge of dairy effluent
13 Nov 08 Rangatira Road, Rangitikei		
Horowhenua District Council	9(3)(a)	Unauthorised alteration of a structure namely a seawall
21 Nov 08 Ocean Beach Street and Marine Parade North		
GH Dear	15(1)(b)	Unauthorised discharge of dairy effluent
1 Dec 08 357 Taipo Rd Rongotea		
Karkariki Proteins Ltd	15(1)(d)	Unauthorised discharge of wastewater
28 Nov 08 1567 Kakariki Road, Feilding		
SKRC Farms Limited	15(1)(b)	Unauthorised discharge of dairy effluent
10 Dec 08 Parewanui Road Bulls		
SKRC Farms Limited	15(1)(b)	Unauthorised discharge of dairy effluent
10 Dec 08		

Parewanui Road Bulls		
Frecklington Farms Ltd	15(1)(b)	Unauthorised discharge of dairy effluent
10 Dec 08 Tangimoana Road		
GA Burling	15(1)(b)	Unauthorised discharge of dairy effluent
15 Dec 08 945 State Highway 1 Oroua Downs		
GA Burling	15(1)(b)	Unauthorised discharge of dairy effluent
15 Dec 08 State Highway 1 Oroua Downs		
Himatangi Station Limited	15(1)(b)	Unauthorised discharge of poultry manure
17 Dec 08 Motuiti Road, Foxton		
Himatangi Station Limited	15(1)(b)	Unauthorised discharge of poultry manure
17 Dec 08 Motuiti Road, Foxton		

Consent Holder / Responsible Party	Section of Act Contravened	Details
R and H McVitty	15(1)(b)	Unauthorised discharge of dairy effluent
17 Dec 08 Omanuka Road		
Marcus Alasdair Cowan	15(1)(b)	Unauthorised discharge of dairy effluent
22 Dec 08 654 Oroua Valley Rd, Apiti		
National Foods (New Zealand) Limited	15(1)(d)	Unauthorised discharge of contaminants from trade and industrial site
19 Dec 08 100 Highbury Ave P/Nth		
Shell NZ Ltd	15(1)(c)	Unauthorised discharge of contaminants from trade and industrial site
19 Dec 08 682 Pioneer H/W Palmerston North		
Porewa Holdings Ltd	15(1)(b)	Unauthorised discharge of dairy effluent
23 Dec 08 Porewa Road Rangitikei		
Nguituroa Farm Ltd	15(1)(b)	Unauthorised discharge of raceway effluent
23 Dec 08 1226 Tennant drive Palmerston North		
Nguituroa Farm Ltd	15(1)(b)	Unauthorised discharge of underpass effluent
23 Dec 08 1226 Tennant drive Palmerston North		
Nguituroa Farm Ltd	15(1)(b)	Unauthorised discharge of silage leachate
23 Dec 08 1226 Tennant drive Palmerston North		
AFFCO New Zealand Limited	15(1)(c)	Unauthorised discharge to air
9 Jan 09 Campbell Road, Fielding		
Aotearoa Coolstores Limited	15 (1)(c)	Unauthorised discharge to air
9 Jan 09 Works Road, Longburn		
Aotearoa Coolstores Limited	322(1)(a)(1)	Non Compliance Abatement Notice
9 Jan 09 Works Road, Longburn		
Hartridge Family Trust	14 (1)(a)	Unauthorised abstraction of water
23 Jan 09 Wi Duncan Road		
Hartridge Family Trust	322(1)(a)(1)	Non Compliance Abatement Notice
23 Jan 09 Wi Duncan Road		
Omana Deer Farm Limited	14 (1) (a)	Allowing bore to flow to waste

Consent Holder / Responsible Party	Section of Act Contravened	Details
24 Jan 09 163 Papaiti Road, Wanganui		
Omana Deer Farm Limited	322(1)(a)(1)	Non Compliance Abatement Notice
24 Jan 09 163 Papaiti Road, Wanganui		
Rex Alfred Anderson	15 (1) b	Unauthorised discharge of solid waste to land
26 Jan 09 55-56 Rupe Street, Utiku, RD 4, Taihape		

Table 3: ABATEMENT NOTICES ISSUED NOVEMBER 2008 – JANUARY 2009

An Abatement Notice is a legal notice served on a person by an enforcement officer, to have the person either cease an activity or to undertake activity to ensure compliance with the Resource Management Act 1991.

Consent Holder / Responsible Party	Activity	Location
Porewa Holdings Limited (M&H McAloon)	Non-compliance	Porewa Road Marton
5 Nov 08 Cease unauthorised discharge of effluent to land where it may enter water		
Porewa Holdings Limited (M&H McAloon)	Non-compliance	Porewa Road Marton
5 Nov 08 Remove effluent solids discharged within 20 m of a watercourse		
Nguituroa Farm Limited (M McAloon)	Non-compliance	1226 Tennant drive Palmerston North
11 Nov 08 Cease unauthorised discharge of effluent to land where it may enter water.		
Nguituroa Farm Limited (M McAloon)	Incident	1226 Tennant drive Palmerston North
11 Nov 08 Cease unauthorised discharge of effluent to land where it may enter water.		
Nguituroa Farm Limited (M McAloon)	Incident	1226 Tennant drive Palmerston North
11 Nov 08 Cease unauthorised discharge of silage leachate to land where it may enter water.		
James Bull trading as Mellington Dairy	Non-compliance	Rangatira Road, Rangitikei
13 Nov 08 Cease unauthorised discharge of effluent to land where it may enter water.		
Riverside P/Ship (Paul Harris)	Incident	1254 Tangimoana Rd Tangimoana
13 Nov 08 Cease unauthorised discharge of effluent to land where it may enter water		
SKRC Farms Ltd (M & H McAloon)	Non-compliance	Parewanui Road Bulls
9 Dec 08 Cease unauthorised discharge of effluent to land where it may pond and is within 20 m of property boundary or road.		
SKRC Farms Ltd (M & H McAloon)	Non-compliance	Parewanui Road Bulls
9 Dec 08 Cease unauthorised discharge of effluent to land where it may enter water .		
Todd Gloyn	Incident	Campion Road, Rongotea
20 Nov 08 Cease unauthorised discharge of effluent to land where it enter water, namely effluent from a race into a farm drain		
Horowhenua District Council (David Ward)	Non-compliance	Ocean Beach Street and Marine Parade North
21 Nov 08 Remove all rock and other debris (excluding sand) from the voids in the concrete block units that make up the seawall.		
Consent Holder / Responsible Party	Activity	Location
JC & AE Elers	Incident	Tutaekara Road, Mangamarie
26 Nov 08 Cease The unauthorised discharge of objectionable odour beyond your property boundary.		
George Henry Dear	Non-compliance	Taipō Road, Rongotea

25 Nov 08 Cease unauthorised discharge of effluent to land where it enter water		
Kevin O'Connor & Associates Ltd	Incident	Roberts Line, Palmerston North
8 Dec 08 Cease unauthorised discharge from industrial or trade premises to air		
D & V Bargh Contracting Ltd (David Andrew Bargh)	Incident	Roberts Line, Palmerston North
9 Dec 08 Cease unauthorised discharge from industrial or trade premises to air		
Monterey Housing Ltd (Keith Donald Marriott)	Incident	Roberts Line, Palmerston North
9 Dec 08 Cease unauthorised discharge from industrial or trade premises to air		
GA Burling	Non-compliance	State Highway 1 Oroua Downs
15 Dec 08 Cease unauthorised discharge of effluent to land where it enter water		
GA Burling	Non-compliance	State Highway 1 Oroua Downs
15 Dec 08 Cease unauthorised discharge of effluent to land where it enter water		
Frecklington Farms Ltd (PW Frecklington)	Non-compliance	Tangimoana Road
11 Dec 08 Cease unauthorised discharge of effluent to land where it enter water		
PA Lowe	Non-compliance	Rowe Road, Rongotea
15 Dec 08 Cease unauthorised discharge of effluent to land where it enter water		
PA Lowe	Non-compliance	Rowe Road, Rongotea
15 Dec 08 Remove effluent solids discharged within 20m of a watercourse		
Himatangi Station Limited (Grant & Katrina Barber)	Incident	Motuiti Road, Foxton
17 Dec 08 Cease unauthorised discharge of effluent to land where it enter water		
R and H McVitty	Non-compliance	Omanuka Road
17 Dec 08 Cease unauthorised discharge of effluent to land where it enter water		
Shell New Zealand Ltd (Copies to all Directors)	Incident	Pioneer Highway Palmerston North
19 Dec 08 Cease unauthorised discharge of odour to air		

Consent Holder / Responsible Party	Activity	Location
Marcus & Kathleen Cowan	Non-compliance	Oroua Valley Road, Apiti
18 Dec 08 Cease unauthorised discharge of effluent to land where it enter water		
National Foods (New Zealand Ltd) (Copies to all Directors)	Incident	Botanical Road Palmerston North
19 Dec 08		

Cease unauthorised discharge of contaminants to water		
Dennis Paul Nitschke & Suzette Anne Nitschke	Non-compliance	Pukepapa Road Marton
19 Dec 08		
Cease unauthorised discharge of piggery effluent to land where it enter water		
Windburn View Limited (Robert Crafar, Glen Crafar, Sam Webb)	Non-compliance	Hewitts Road Linton
22 Dec 08		
Cease unauthorised discharge of effluent to land where it enter water		
Sexton Land Company (Basil Sexton, Dean, Sexton, Jennifer Sexton)	Non-compliance	Himatangi Beach Road, Foxton
22 Dec 08		
Cease unauthorised discharge of effluent to land where it enter water		
Ballahooley Farming Limited (CW and CP Pedersen)	Non-compliance	Himatangi Beach Road, Foxton
13 Jan 09		
Cease unauthorised discharge of effluent to land where it enter water		
Colin Maxwell Wilton C Wilton (all known addresses)	Non-compliance	Makuri & Makuri-iti Stream, Makuri
16 Jan 09		
Cease unauthorised abstraction of gravel		

SUMMARY OF ENVIRONMENTAL INCIDENTS NOVEMBER 2008 – JANUARY 2009

Figure 1. Graph shows the monthly summary of environmental incidents received by the Compliance Section.

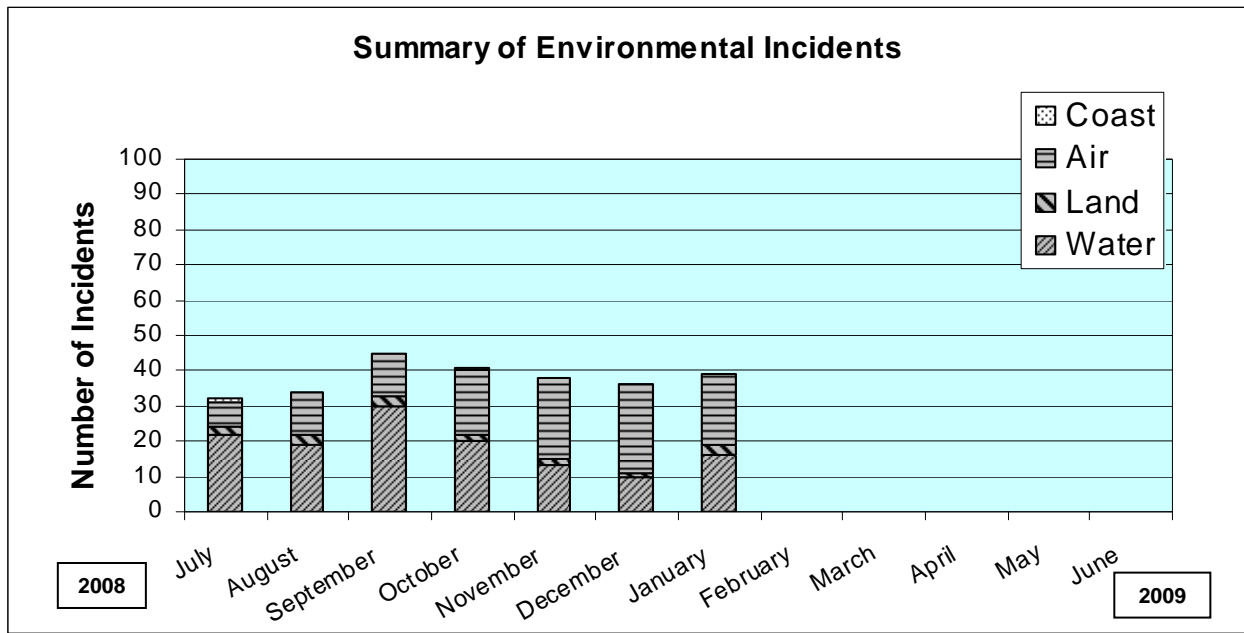


Figure 2. Graph compares the number of environmental incidents received each month over the past 10 years.

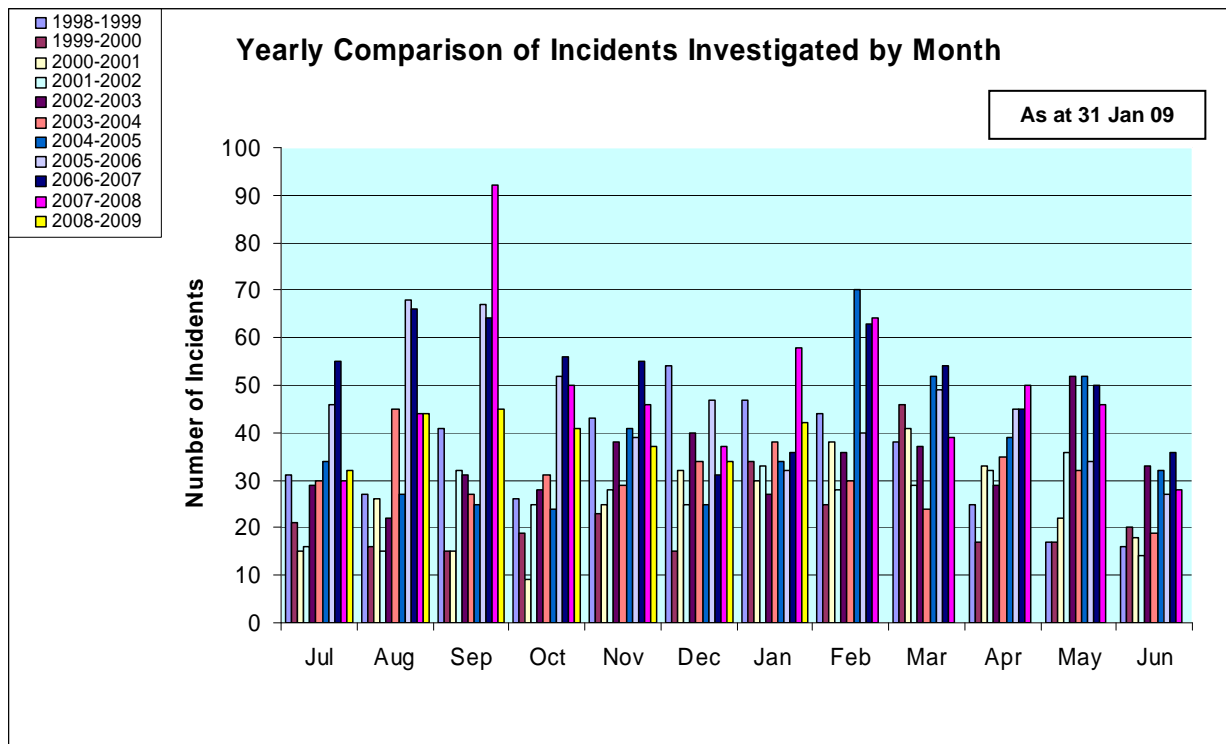


Figure 3. Graph compares the total number of environmental incidents received over the past 11 years.

NUMBER OF INCIDENTS BY YEAR

As at 31 Jan 09

