

June 2010

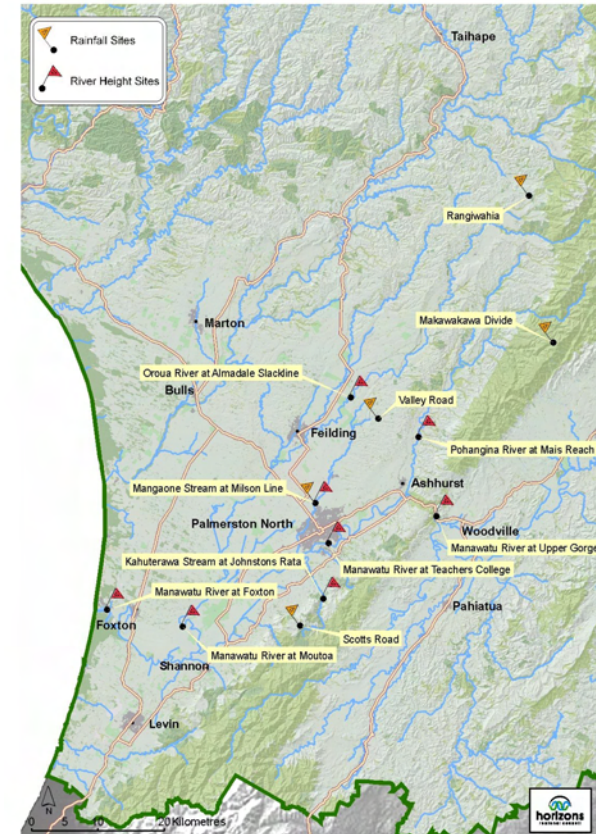
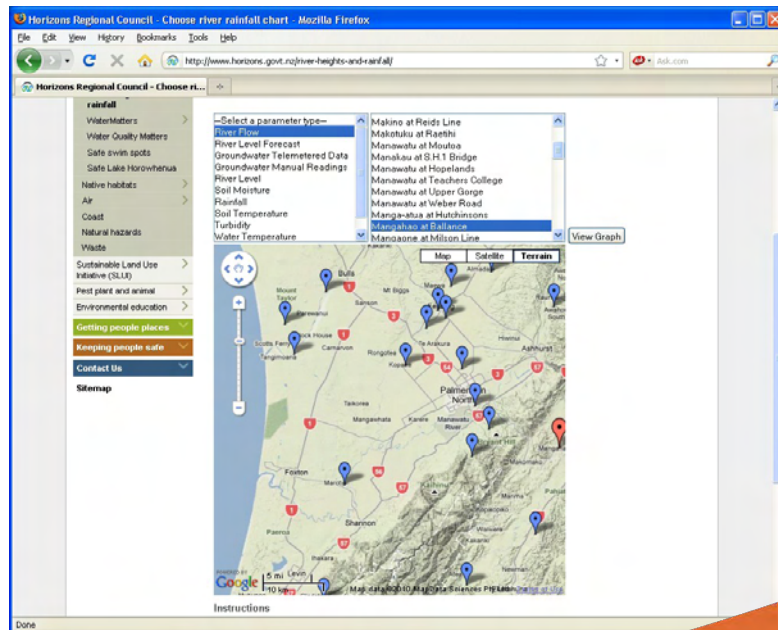
Waterline Lower Manawatu Catchment Freephone 0508 4 Flood

Waterline is a 24-hour, freephone service giving river height and rainfall information. Simply follow the voice prompts to get the information you want to know.

Check out our Website

Check out our website to find out what is happening at the river and rainfall sites in our Region, and about other council services, news and information.

www.horizons.govt.nz



What you do

Phone 0508 435 663. When answered, enter the following numbers, depending on what you want to know:

1. Manawatu Catchment Downstream of Manawatu Gorge

Height Sites

1 = Height	Then choose your site number	00 = Manawatu River at Teachers college
		01 = Manawatu river at Moutoa
		03 = Oroua River at Almadale Slackline
		06 = Pohangina River at Mais Reach
		07 = Mangaone Stream at Milson Line
		09 = Kahuterawa Stream at Johnstons Rata
		10 = Manawatu River at Foxton

Or

Rainfall Sites

3 = Rainfall	Then	00 = Valley Road
		02 = Rangiwahia
		04 = Makawakawa Divide
		06 = Milson Line
		08 = Scotts Road

2. Manawatu Catchment Upstream of Manawatu Gorge

Height Sites

1 = Height	Then	00 = Manawatu River at Upper Gorge
-------------------	------	------------------------------------

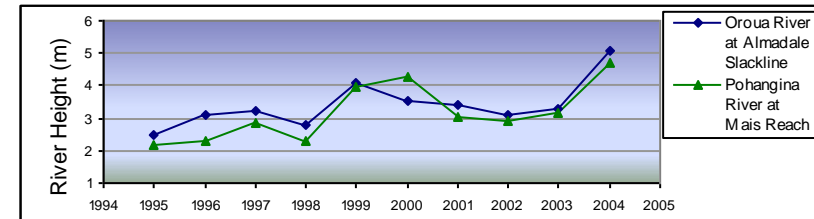
Speed Dial your favourite site

To save time, you can speed dial your favourite site. For example, entering 1100 will give you the river height of the Manawatu River at Teachers College.

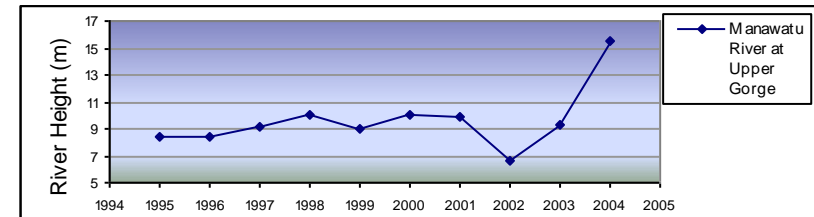
Please let us know as soon as possible if you think something is wrong with the Waterline System by phoning our 24-hour call free number 0508 446 749.

How big is the flood?

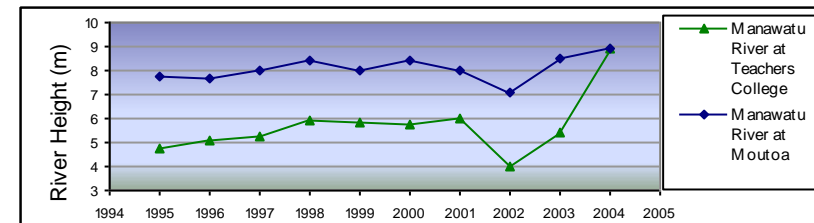
The graphs below show the maximum river height reached during the largest floods recorded each year between 1995 and 2004.



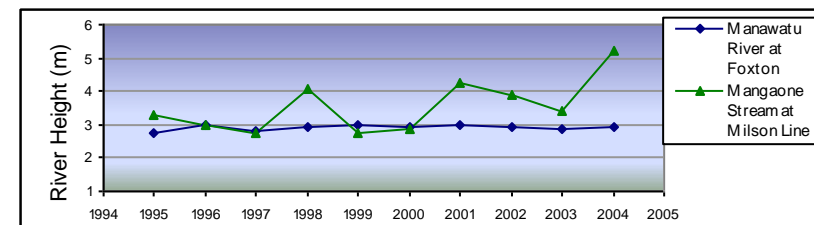
Maximum Recorded Height:
Almadale Slackline – 5.21m in 1958
Mais Reach – 4.68m in 2004



Maximum Recorded Height:
Upper Gorge – 17.99m in 1880



Maximum Recorded Height:
Teachers College – 8.92m in 2004
Moutoa – 8.96 in 2004



Maximum Recorded Height:
Foxton – 3.15m in 1993
Milson Line – 5.19m in 2004

No records are available for Johnstons Rata for the period 1994-2003

You can estimate the flood's likely impact on your property by combining the river height information you receive with these graphs and your own knowledge of past events. If you are new to the area, we recommend you contact neighbours to find out how different sized floods affect your property.