

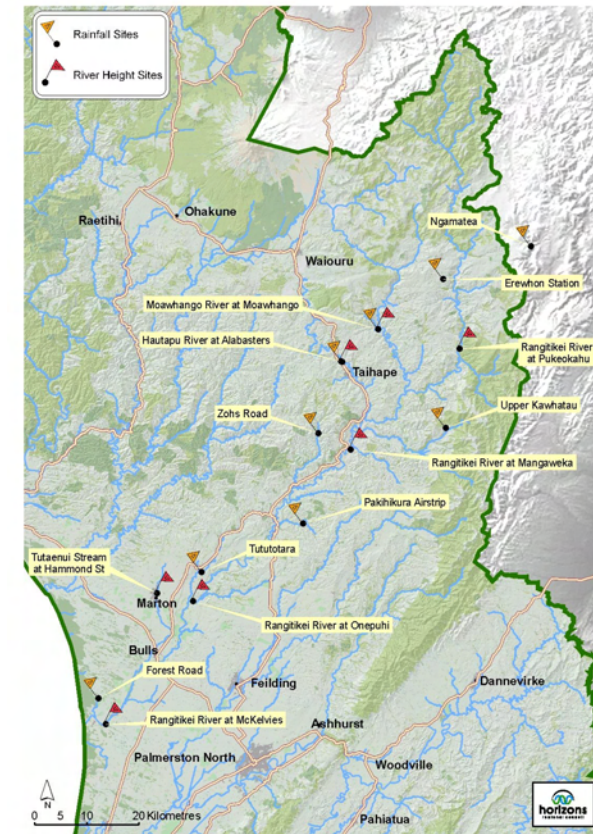


KEEPING PEOPLE SAFE

June 2010

# Waterline Rangitikei Catchment Freephone 0508 4 Flood

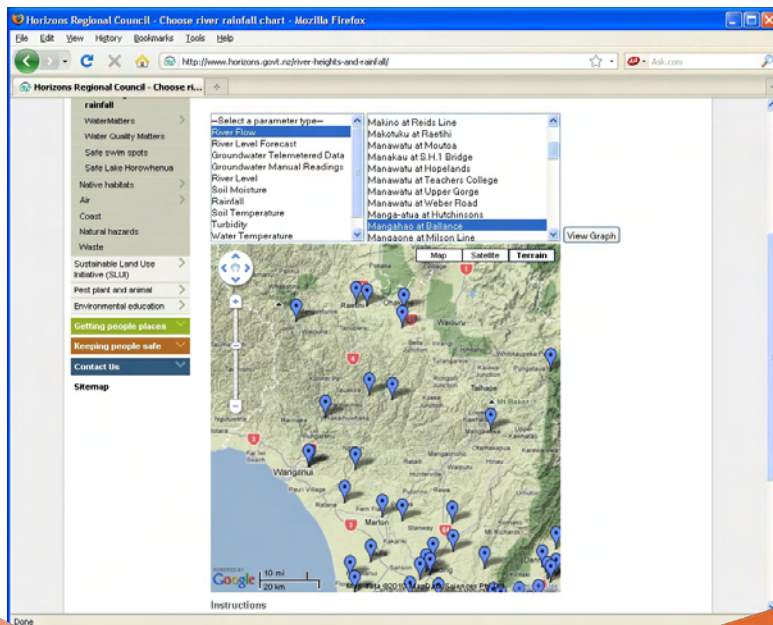
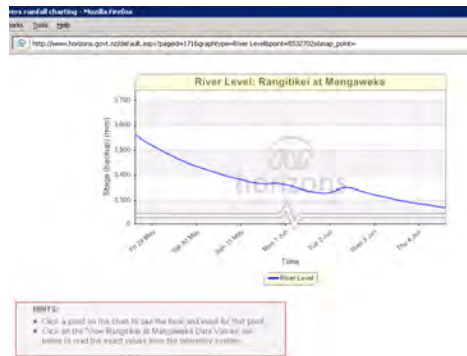
Waterline is a 24-hour, freephone service giving river height and rainfall information. Simply follow the voice prompts to get the information you want to know.



## Check out our Website

Check out our website to find out what is happening at the river and rainfall sites in our Region, and about other council services, news and information.

[www.horizons.govt.nz](http://www.horizons.govt.nz)



11-15 Victoria Avenue  
Private Bag 11 025  
Manawatu Mail Centre  
Palmerston North 4442

T 0508 800 800  
F 06 952 2929  
help@horizons.govt.nz  
www.horizons.govt.nz



## What you do

Phone 0508 435 663. When answered, enter the following numbers, depending on what you want to know:

### 3. Rangitikei Catchment

#### Height Sites

- 1 = Height** Then choose your site number
- 00 = Rangitikei River at Mangaweka
  - 01 = Rangitikei River at Pukeokahu
  - 02 = Rangitikei River at Onepuhi
  - 03 = Hautapu River at Alabasters
  - 04 = Moawhango River at Moawhango
  - 05 = Tutaenui Stream at Hammond Street
  - 06 = Rangitikei River at McKelvies

#### Rainfall Sites

- Or**
- 3 = Rainfall** Then
- 00 = Erewhon Station
  - 01 = Upper Kawhatau
  - 02 = Alabasters
  - 03 = Moawhango
  - 04 = Zohs Road
  - 05 = Pakihikura Airstrip
  - 06 = Tututotara
  - 07 = Forest Road
  - 08 = Ngamatea

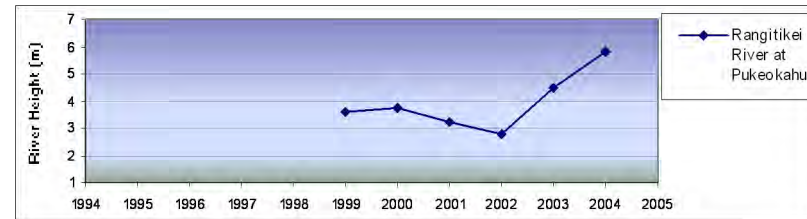
### Speed Dial your favourite site

To save time, you can speed dial your favourite site. For example, entering 3100 will give you the river height of the Rangitikei River at Mangaweka.

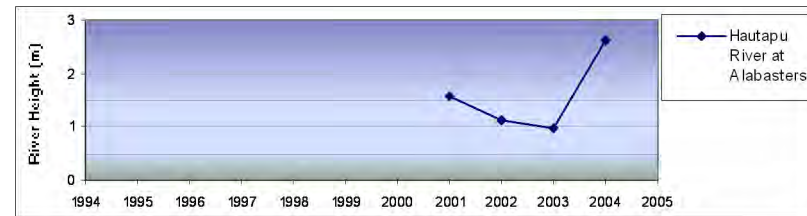
Please let us know as soon as possible if you think something is wrong with the Waterline System by phoning our 24-hour call free number 0508 446 749.

## How big is the flood?

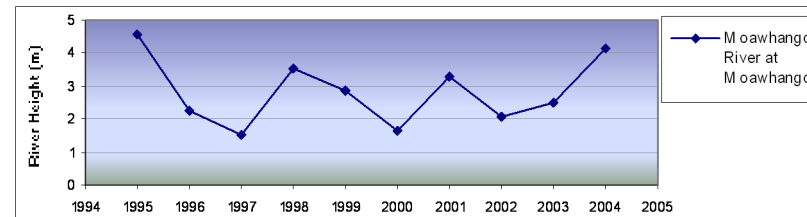
The graphs below show the maximum river height reached during the largest floods recorded each year between 1995 and 2004.



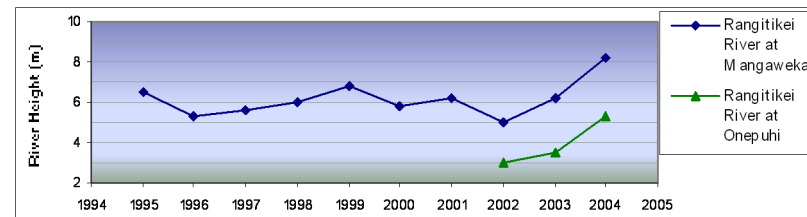
Maximum Recorded Height:  
Pukeokahu - 5.81m



Maximum Recorded Height:  
Alabasters - 2.62 in  
This information supplied courtesy of NIWA



Maximum Recorded Height:  
Moawhango - 4.74m  
This information supplied courtesy of NIWA



Maximum Recorded Height:  
Mangaweka - 9.70m in 1897  
Onepuhi - 5.34m in  
Mangaweka information supplied courtesy of NIWA

No records are available for Hammond St and McKelvies for the period 1994-2005

Maximum Recorded Height:  
Hammond Street - 3.90m in 1976  
McKelvies - 3.70m in 1985

You can estimate the flood's likely impact on your property by combining the river height information you receive with these graphs and your own knowledge of past events. If you are new to the area, we recommend you contact neighbours to find out how different sized floods affect your property.