

June 2010

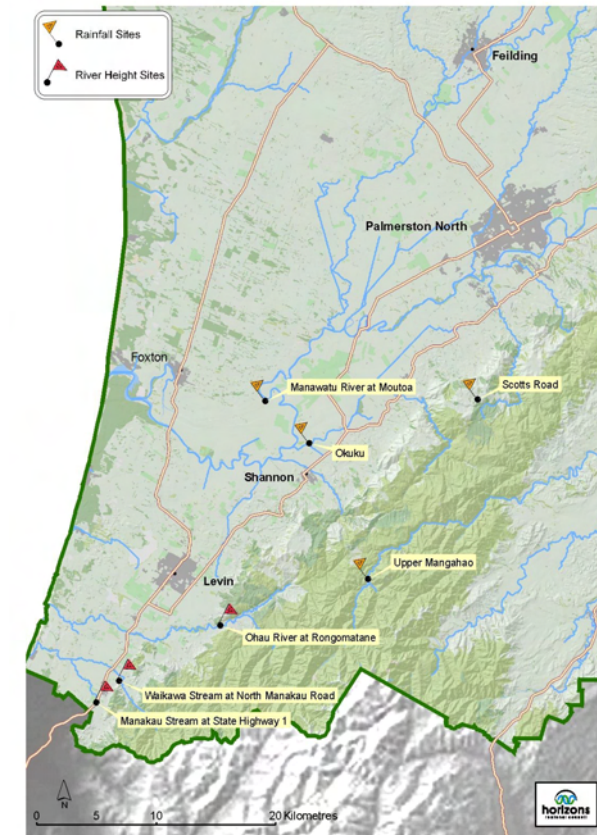
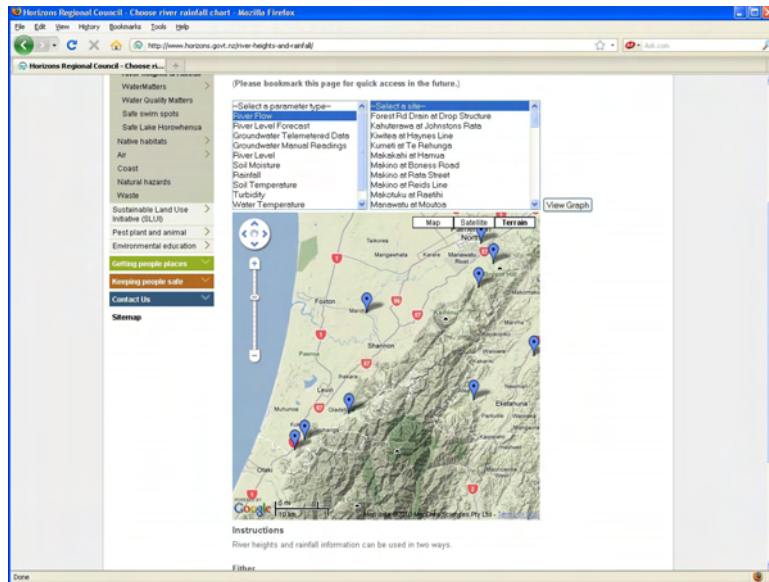
# Waterline Southern Catchment Freephone 0508 4 Flood

Waterline is a 24-hour, freephone service giving river height and rainfall information. Simply follow the voice prompts to get the information you want to know.

## Check out our Website

Check out our website to find out what is happening at the river and rainfall sites in our Region, and about other council services, news and information.

[www.horizons.govt.nz](http://www.horizons.govt.nz)



## What you do

Phone 0508 435 663. When answered, enter the following numbers, depending on what you want to know:

### 1. Manawatu Catchment Downstream of Manawatu Gorge

#### Rainfall Sites

**3 = Rainfall** Then choose your site number

08	=	Scotts Road
09	=	Moutoa
10	=	Okuku

### 2. Manawatu Catchment Upstream of Manawatu Gorge

#### Rainfall Sites

**3 = Rainfall** Then 07 = Upper Mangahao

### 7. Southern Catchments

#### Height Sites

**1 = Height** Then

00	=	Ohau River at Rongomatane
01	=	Manakau Stream at State Highway 1
02	=	Waikawa Stream at North Manakau Road

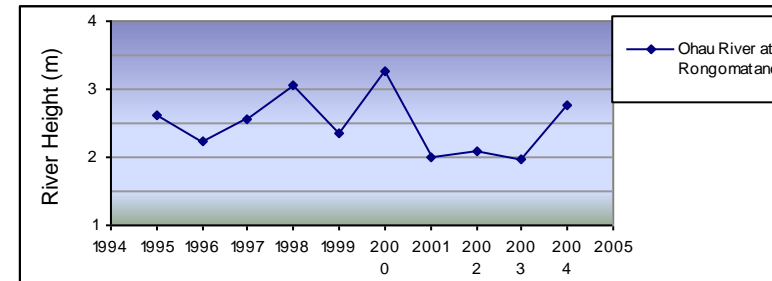
### Speed Dial your favourite site

To save time, you can speed dial your favourite site. For example, entering 7100 will give you the river height of the Ohau River at Rongomatane.

*Please let us know as soon as possible if you think something is wrong with the Waterline System by phoning our 24-hour call free number 0508 446 749.*

## How big is the flood?

The graphs below show the maximum river height reached during the largest floods recorded each year between 1995 and 2004.



Maximum Recorded Height:  
Rongomatane – 4.09m

This information supplied courtesy of NIWA

No records are available for Manakau Stream at State Highway 1 for the period 1994-2005

No records are available for Waikawa Stream at North Manakau Road for the period 1994-2005

You can estimate the flood's likely impact on your property by combining the river height information you receive with these graphs and your own knowledge of past events. If you are new to the area, we recommend you contact neighbours to find out how different sized floods affect your property.