

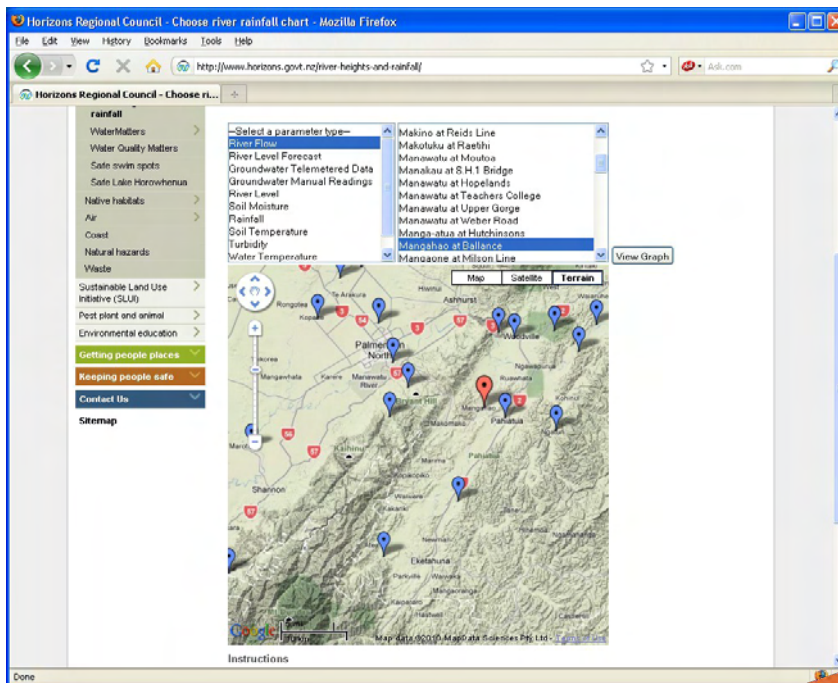
Check out our Website

Check out our website to find out what is happening at the river and rainfall sites in our Region, and about other council services, news and information.

www.horizons.govt.nz



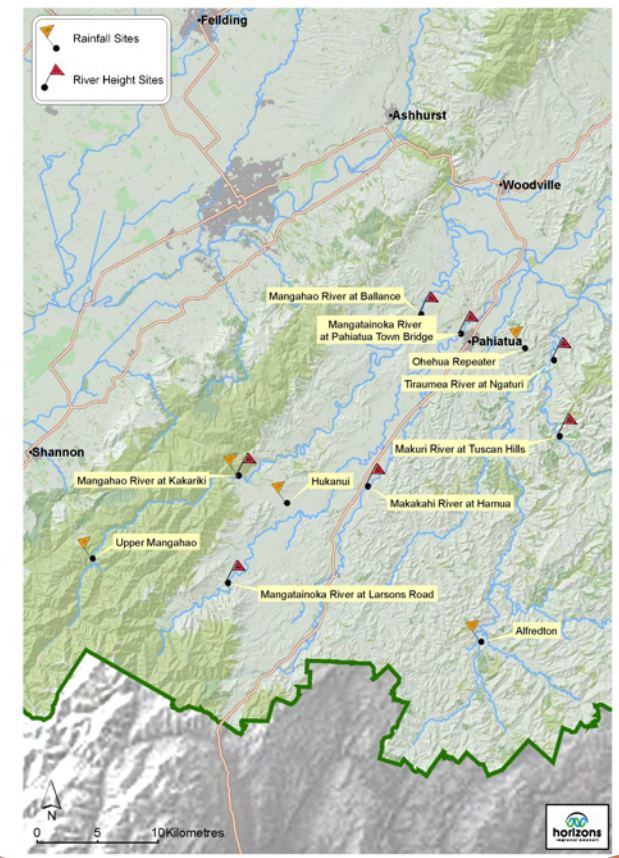
HINTS:
 • Click a point on the chart to see the time and value for that point.
 • Click on the View Mangatainoka at Pahiatua Town Bridge link to view the data table for that site.
 • Click on the View Mangatainoka at Pahiatua Town Bridge link to view the data table for that site.



June 2010

Waterline Southern Upper Manawatu Catchment Freephone 0508 4 Flood

Waterline is a 24-hour, freephone service giving river height and rainfall information.



11-15 Victoria Avenue
 Private Bag 11 025
 Manawatu Mail Centre
 Palmerston North 4442

T 0508 800 800
 F 06 952 2929
 help@horizons.govt.nz
 www.horizons.govt.nz



What you do

Phone 0508 435 663. When answered, enter the following numbers, depending on what you want to know:

2. Manawatu Catchment Upstream of Manawatu Gorge

1 = Height

Then choose your site number

- Height Sites**
- 03 = Mangatainoka River at Pahiatua Town Bridge
 - 04 = Mangatainoka River at Larsons Road
 - 05 = Mangahao River at Ballance
 - 06 = Mangahao River at Kakariki
 - 07 = Makakahi River at Hamua
 - 08 = Tiraumea River at Ngaturi
 - 09 = Makuri River at Tuscan Hills

Or

3 = Rainfall

Then

- Rainfall Sites**
- 00 = Kakariki
 - 01 = Alfredton
 - 06 = Ohehua Repeater
 - 07 = Upper Mangahao
 - 08 = Hukanui

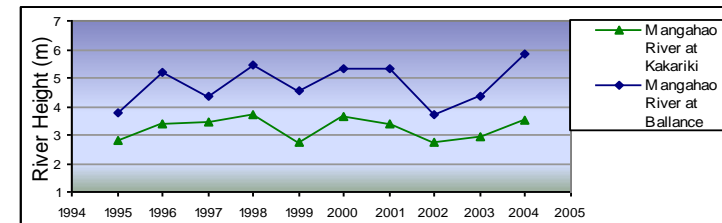
Speed Dial your favourite site

To save time, you can speed dial your favourite site. For example, entering 2103 will give you the river height of the Mangatainoka River at Pahiatua Town Bridge.

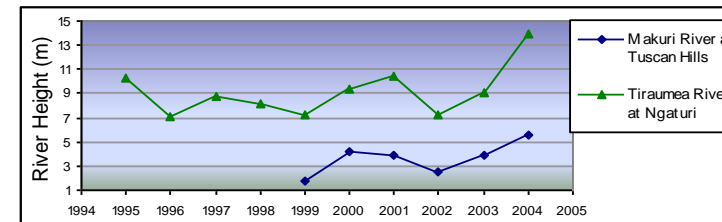
Please let us know as soon as possible if you think something is wrong with the Waterline System by phoning our 24-hour call free number 0508 446 749.

How big is the flood?

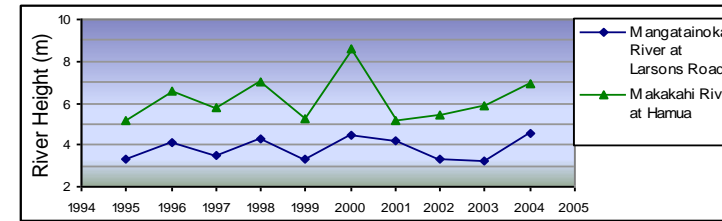
The graphs below show the maximum river height reached during the largest floods recorded each year between 1995 and 2004.



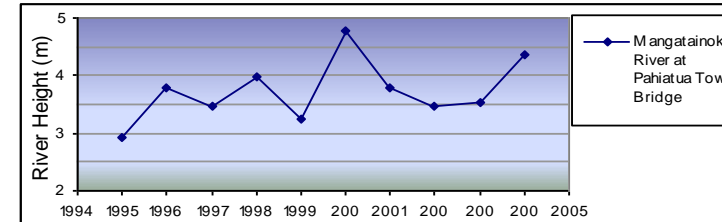
Maximum Recorded Height:
Kakariki – 4.36m in 2005



Maximum Recorded Height:
Tuscan Hills – 5.61m in 2004



Maximum Recorded Height:
Larsons – 4.58m in 2004



Maximum Recorded Height:
Pahiatua Town Bridge -

You can estimate the flood's likely impact on your property by combining the river height information you receive with these graphs and your own knowledge of past events. If you are new to the area, we recommend you contact neighbours to find out how different sized floods affect your property.