

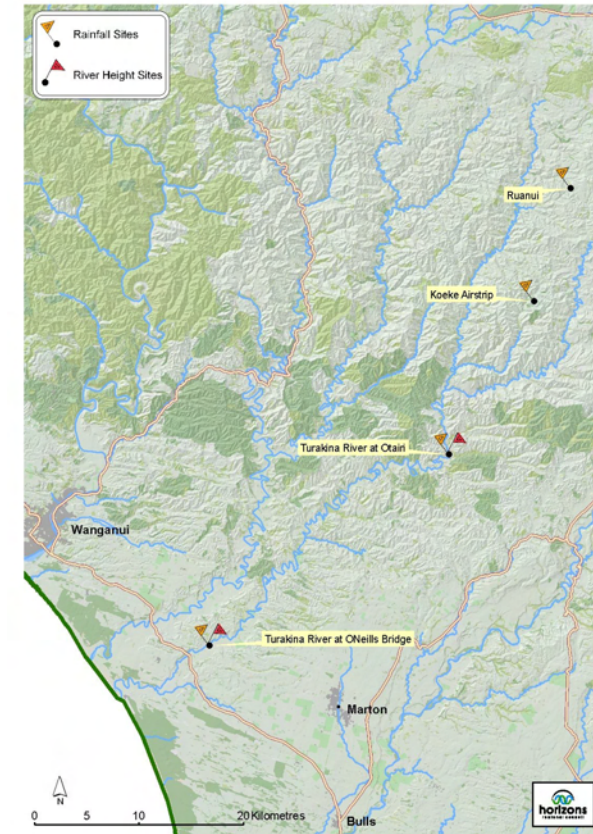


KEEPING PEOPLE SAFE

June 2010

Waterline Turakina Catchment Freephone 0508 4 Flood

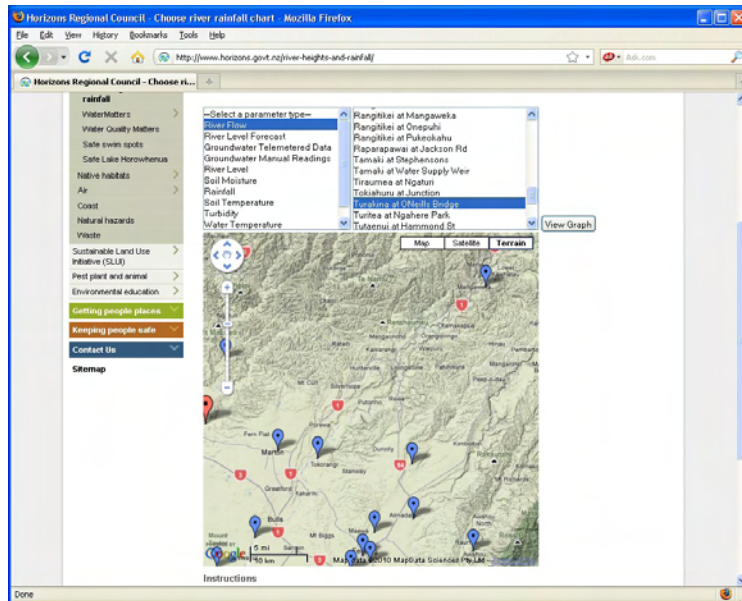
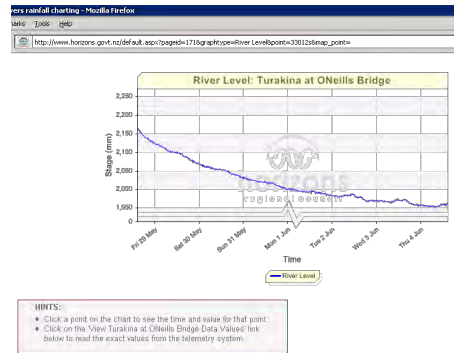
Waterline is a 24-hour, freephone service giving river height and rainfall information. Simply follow the voice prompts to get the information you want to know.



Check out our Website

Check out our website to find out what is happening at the river and rainfall sites in our Region, and about other council services, news and information.

www.horizons.govt.nz



11-15 Victoria Avenue
Private Bag 11 025
Manawatu Mail Centre
Palmerston North 4442

T 0508 800 800
F 06 952 2929
help@horizons.govt.nz
www.horizons.govt.nz



What you do

Phone 0508 435 663. When answered, enter the following numbers, depending on what you want to know:

4. Turakina Catchment

Height Sites

1 = Height Then choose your site number

- 00 = Turakina River at Otairi
- 01 = Turakina River at O'Neill's Bridge

Or

Rainfall Sites

3 = Rainfall Then

- 00 = Otairi
- 01 = Koeke Airstrip
- 02 = Ruanui
- 03 = O'Neill's Bridge

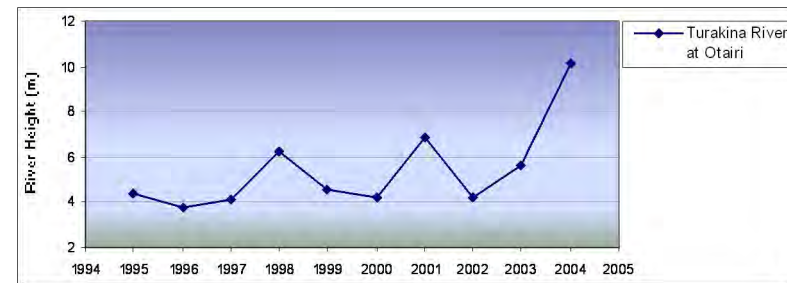
Speed Dial your favourite site

To save time, you can speed dial your favourite site. For example, entering 4100 will give you the river height of the Turakina River at Otairi.

Please let us know as soon as possible if you think something is wrong with the Waterline System by phoning our 24-hour call free number 0508 446 749.

How big is the flood?

The graphs below show the maximum river height reached during the largest floods recorded each year between 1995 and 2004.



Maximum Recorded Height:

This information supplied courtesy of NIWA

No records are available for Turakina River at O'Neill's Bridge
For the period 1994-2003
Maximum Recorded Height: 12.7m in 2004

You can estimate the flood's likely impact on your property by combining the river height information you receive with these graphs and your own knowledge of past events. If you are new to the area, we recommend you contact neighbours to find out how different sized floods affect your property.