

June 2010

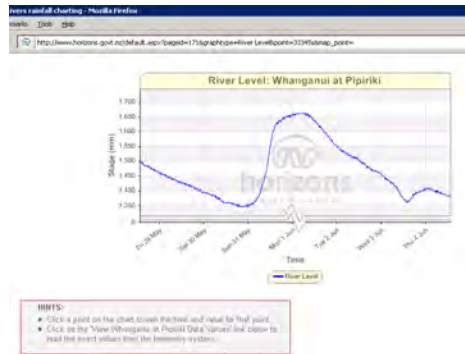
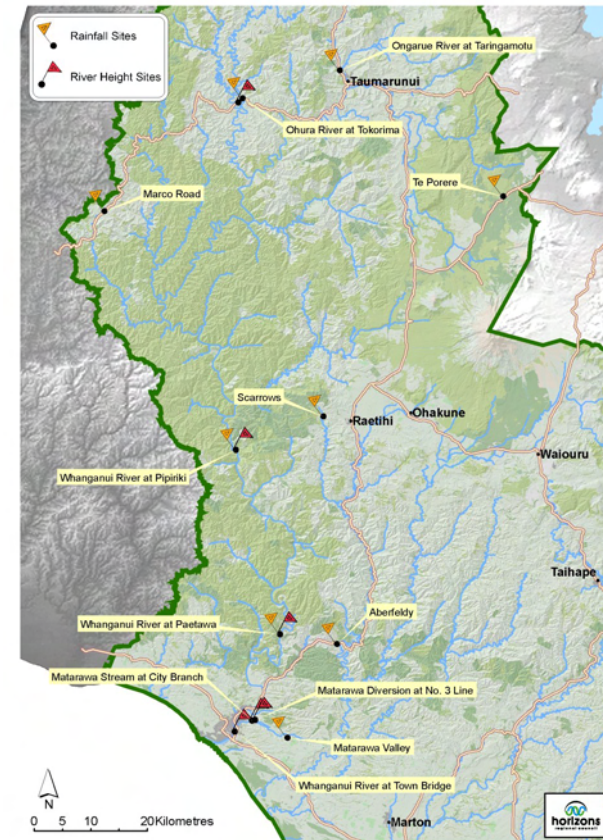
# Waterline Whanganui Catchment Freephone 0508 4 Flood

Waterline is a 24-hour, freephone service giving river height and rainfall information.

## Check out our Website

Check out our website to find out what is happening at the river and rainfall sites in our Region, and about other council services, news and information.

[www.horizons.govt.nz](http://www.horizons.govt.nz)

## What you do

Phone 0508 435 663. When answered, enter the following numbers, depending on what you want to know:

## 6. Whanganui Catchment

### Height Sites

**1 = Height** Then choose your site number

- 00 = Whanganui River at Pipiriki
- 01 = Whanganui River at Paetawa
- 02 = Whanganui River at Town Bridge
- 03 = Matarawa Stream at City Branch
- 04 = Matarawa Diversion at No. 3 Line
- 05 = Ohura River at Tokorima

### Or

### 3 = Rainfall

### Rainfall Sites

Then

- 00 = Te Porere
- 01 = Pipiriki
- 02 = Paetawa
- 03 = Taringamotu
- 04 = Matarawa Valley
- 05 = Tokorima
- 06 = Marco Road

## 5. Whangaehu

### Rainfall Sites

**3 = Rainfall** Then

- 01 = Scarrows
- 06 = Aberfeldy

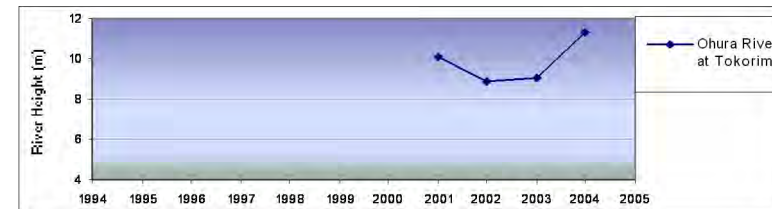
## Speed Dial your favourite site

To save time, you can speed dial your favourite site. For example, entering 6100 will give you the river height of the Whanganui River at Pipiriki.

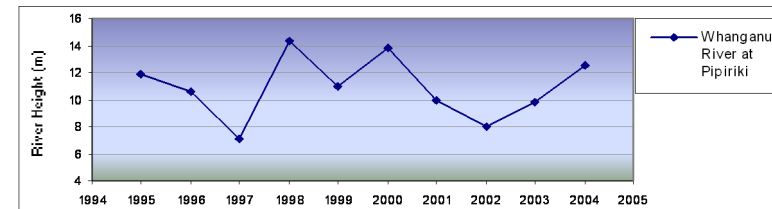
Please let us know as soon as possible if you think something is wrong with the Waterline System by phoning our 24-hour call free number 0508 446 749.

## How big is the flood?

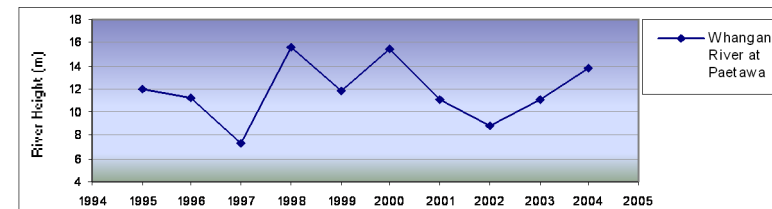
The graphs below show the maximum river height reached during the largest floods recorded each year between 1995 and 2004.



Maximum Recorded Height:  
Tokorima – 12.3m

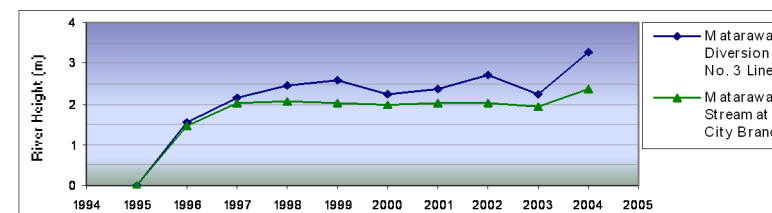


Maximum Recorded Height:  
Pipiriki – 14.38 in



Maximum Recorded Height:  
Paetawa – 16.29m in

This information sup-



Maximum Recorded Height:  
No. 3 Line – 3.26m in 2004  
City Branch – 2.05m

No records are available for Town Bridge for the period 1994-2005

You can estimate the flood's likely impact on your property by combining the river height information you receive with these graphs and your own knowledge of past events. If you are new to the area, we recommend you contact neighbours to find out how different sized floods affect your property.