

MOUNT MUNRO WINDFARM

Landscape Evidence of Rhys Girvan

GRAPHIC SUPPLEMENT

24 MAY 2024



Mount Munro Windfarm



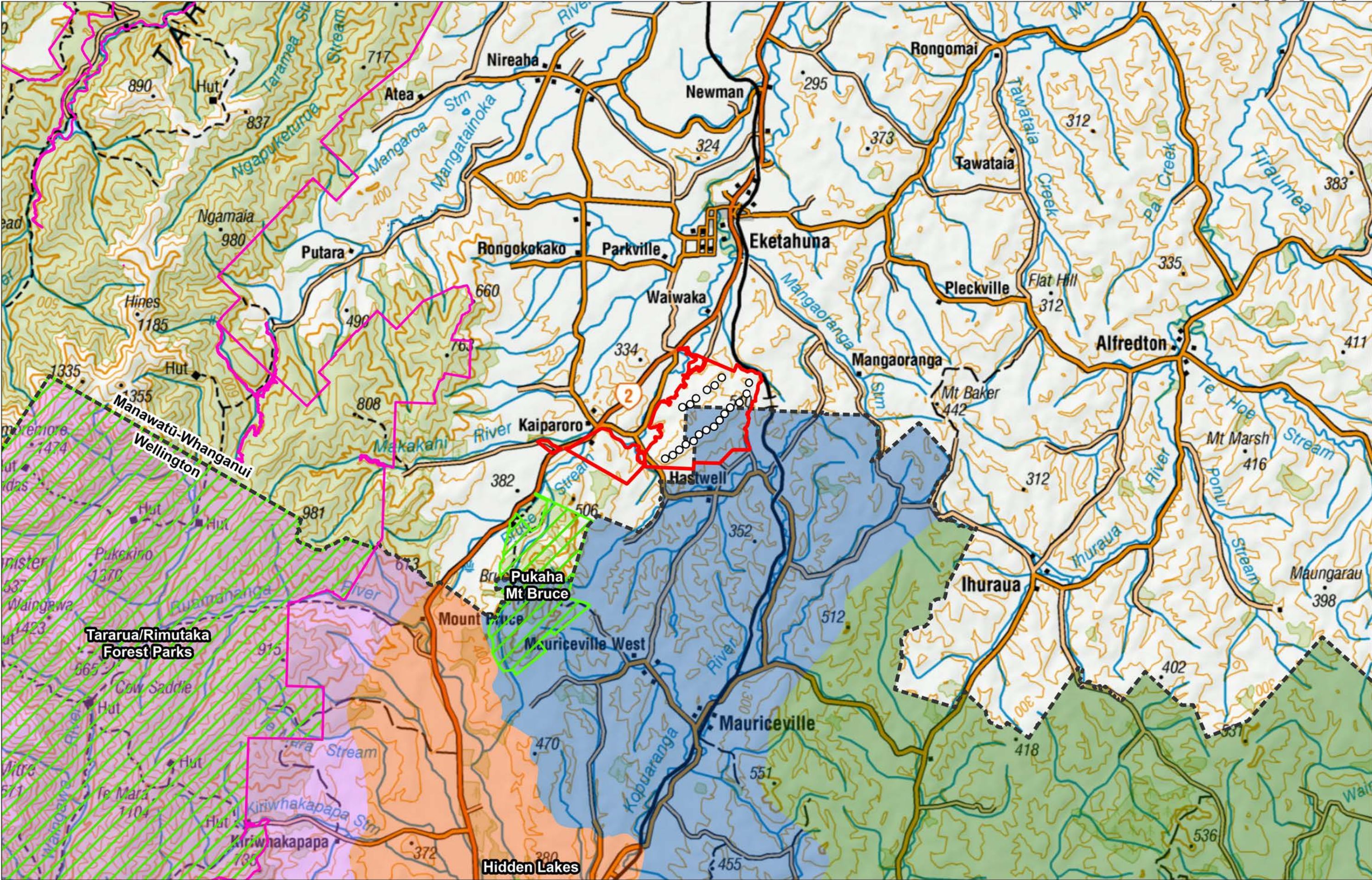
Contents

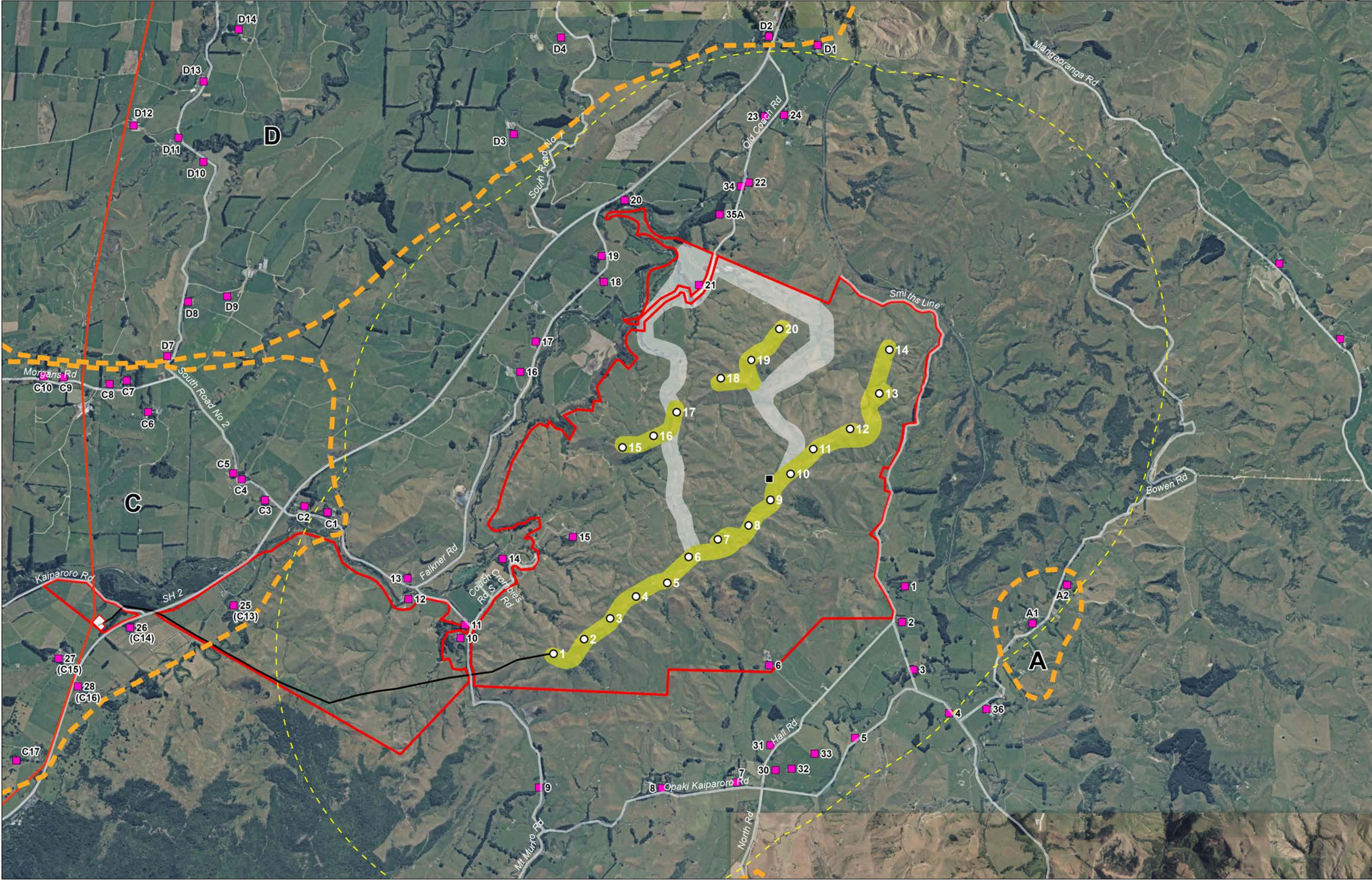
FIGURES

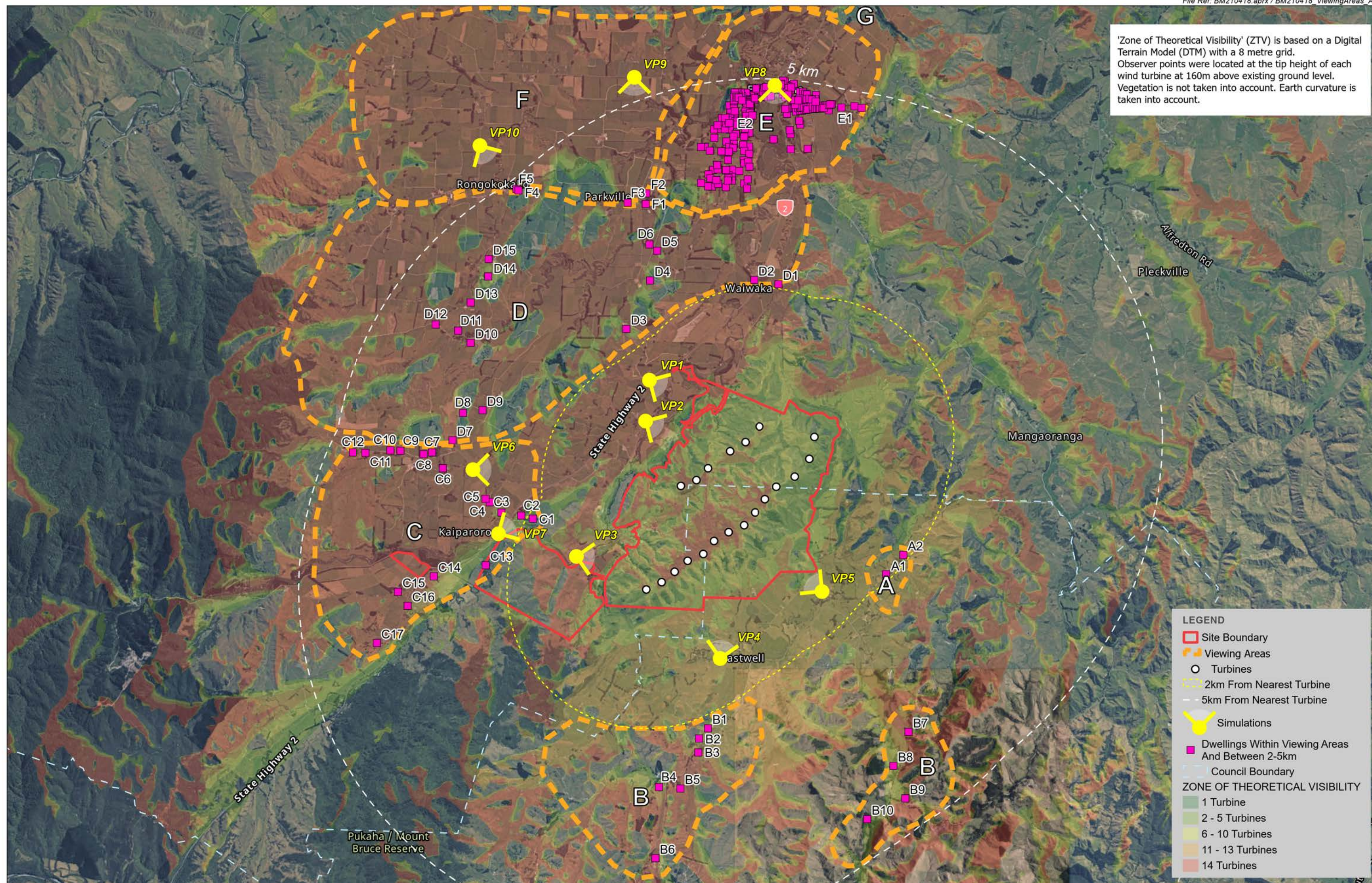
- RG1:** Landscape Context
- RG2:** Dwellings within 2km of Turbine Sites
- RG3:** Longer Distance Viewing Areas
- RG4:** Wider Context: Cumulative Effects

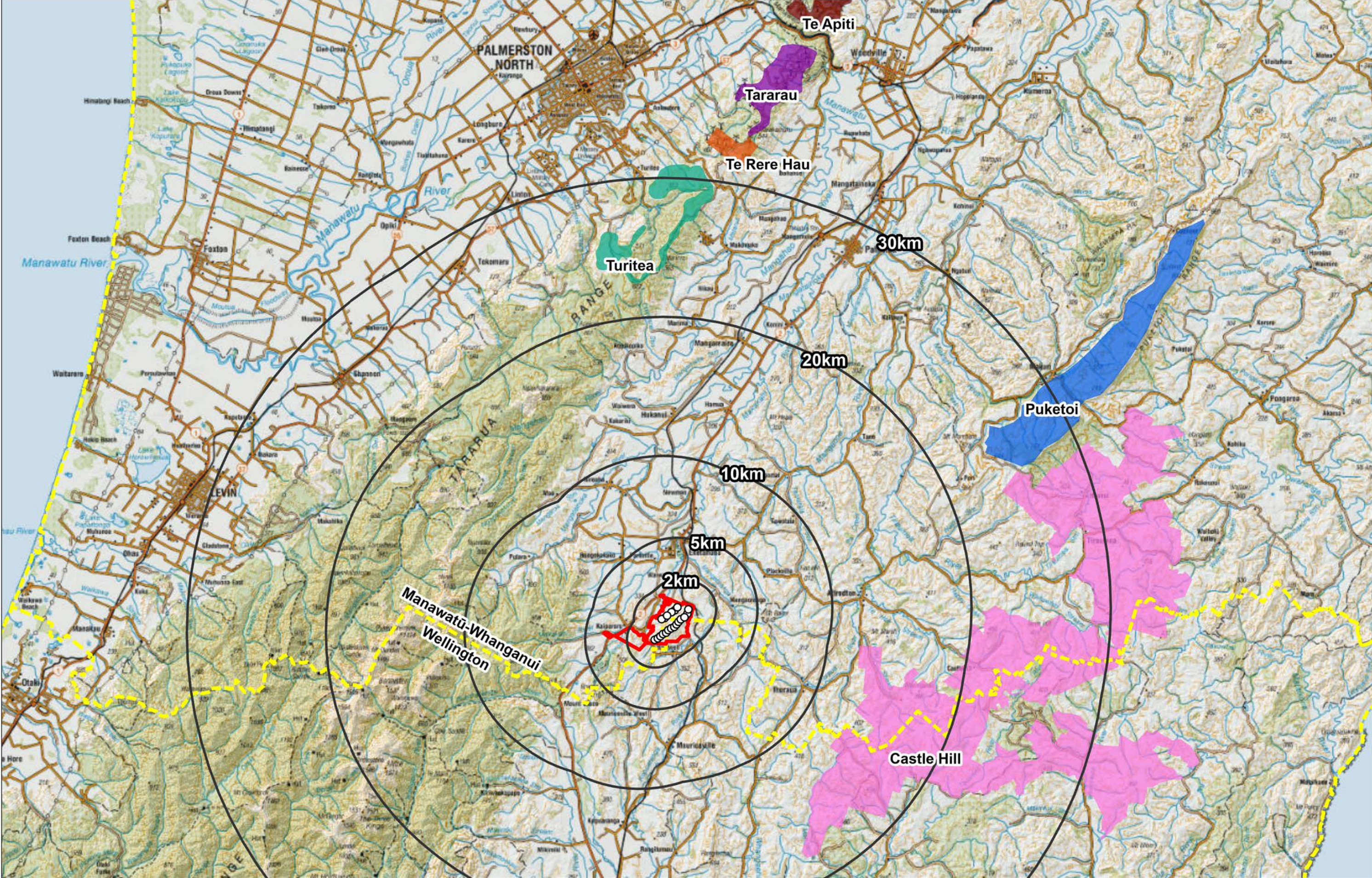
VISUAL SIMULATIONS

VP1A: State Highway 2	Existing View vs Proposed View (Rotors facing dominant wind direction)
VP1B: State Highway 2	Earthworks Highlighted vs Rotors Proposed View (Rotors facing dominant wind direction)
VP2A: Falkner Road	Existing View vs Proposed View (Rotors facing dominant wind direction)
VP2B: Falkner Road	Earthworks Highlighted vs Proposed View (Rotors facing dominant wind direction)
VP3A: Falkner Rd & Opaki Kaiparoro Rd	Existing View vs Proposed View (Rotors facing dominant wind direction)
VP3B: Falkner Rd & Opaki Kaiparoro Rd	Earthworks Highlighted vs Proposed View (Rotors facing dominant wind direction)
VP4A: Opaki Kaiparoro Road	Existing View vs Proposed View (Rotors facing dominant wind direction)
VP4B: Opaki Kaiparoro Road	Earthworks Highlighted vs Proposed View (Rotors facing dominant wind direction)
VP5A: Smiths Line	Existing View vs Proposed View (Rotors facing dominant wind direction)
VP5B: Smiths Line	Earthworks Highlighted vs Proposed View (Rotors facing dominant wind direction)
VP6A: South Road No. 2 (South)	Existing View vs Proposed View (Rotors facing dominant wind direction)
VP6B: South Road No. 2 (South)	Earthworks Highlighted vs Proposed View (Rotors facing dominant wind direction)
VP7A: Anzac Bridge	Existing View vs Proposed View (Rotors facing dominant wind direction)
VP7B: Anzac Bridge	Earthworks Highlighted vs Proposed View (Rotors facing dominant wind direction)
VP8A: Main St, Eketahuna	Existing View vs Proposed View (Rotors facing dominant wind direction)
VP8B: Main St, Eketahuna	Earthworks Highlighted vs Proposed View (Rotors facing dominant wind direction)
VP9A: Nireaha Road	Existing View vs Proposed View (Rotors facing dominant wind direction)
VP9B: Nireaha Road	Earthworks Highlighted vs Proposed View (Rotors facing dominant wind direction)
VP10A: South Road No. 2 (North)	Existing View vs Proposed View (Rotors facing dominant wind direction)
VP10B: South Road No. 2 (North)	Earthworks Highlighted vs Proposed View (Rotors facing dominant wind direction)











Existing View

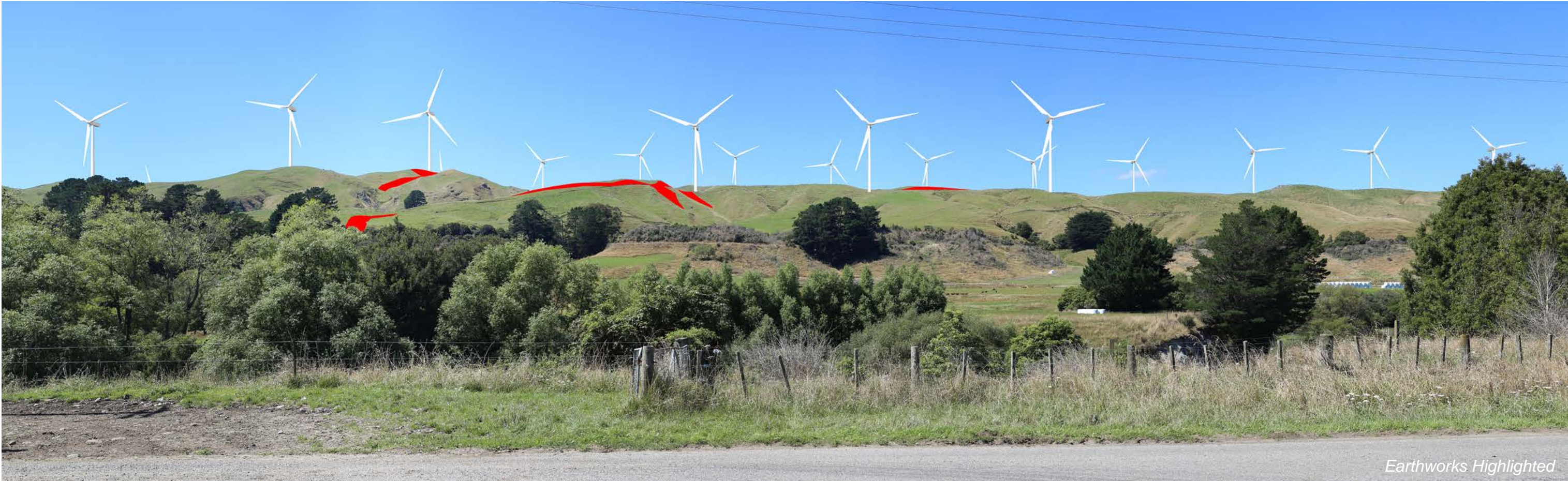


Distance to nearest turbine: 1.5 km

Rotors facing dominant wind direction









Existing View



Distance to nearest turbine: 1.1 km

Rotors facing dominant wind direction













Existing View



Distance to nearest turbine: 3.0 km

Rotors facing dominant wind direction



Earthworks Highlighted



Rotors facing dominant wind direction (earthworks included)







Existing View



Distance to nearest turbine: 4.9 km

Rotors facing dominant wind direction







Earthworks Highlighted



Rotors facing dominant wind direction (earthworks included)





Together. Shaping Better Places.

Boffa Miskell is a leading New Zealand environmental consultancy with nine offices throughout Aotearoa. We work with a wide range of local, international private and public sector clients in the areas of planning, urban design, landscape architecture, landscape planning, ecology, biosecurity, Te Hīhiri (cultural advisory), engagement, transport advisory, climate change, graphics and mapping. Over the past five decades we have built a reputation for creativity, professionalism, innovation and excellence by understanding each project’s interconnections with the wider environmental, social, cultural and economic context.

