

Bus timetable

# HOROWHENUA



11 FEB 2026

---

Public

401

402

403

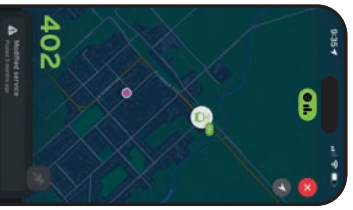
404


**Horowhenua Bus Routes**

- 401 Levin - Palmerston North - Peak Commuter
- 402 Levin - Palmerston North - Off-Peak Commuter (Monday)
- 402 Levin - Palmerston North - Off-Peak Commuter (Wednesday)
- 403 A Day Out in Town
- 404 Levin - Waikanae

**Key**

- Key bus stops
- MSBH Main St Bus Hub (MSBH)





GET IT ON  
Google Play

Download on the  
App Store



Download the Transit app for real-time tracking





401

# Levin - Palmerston North

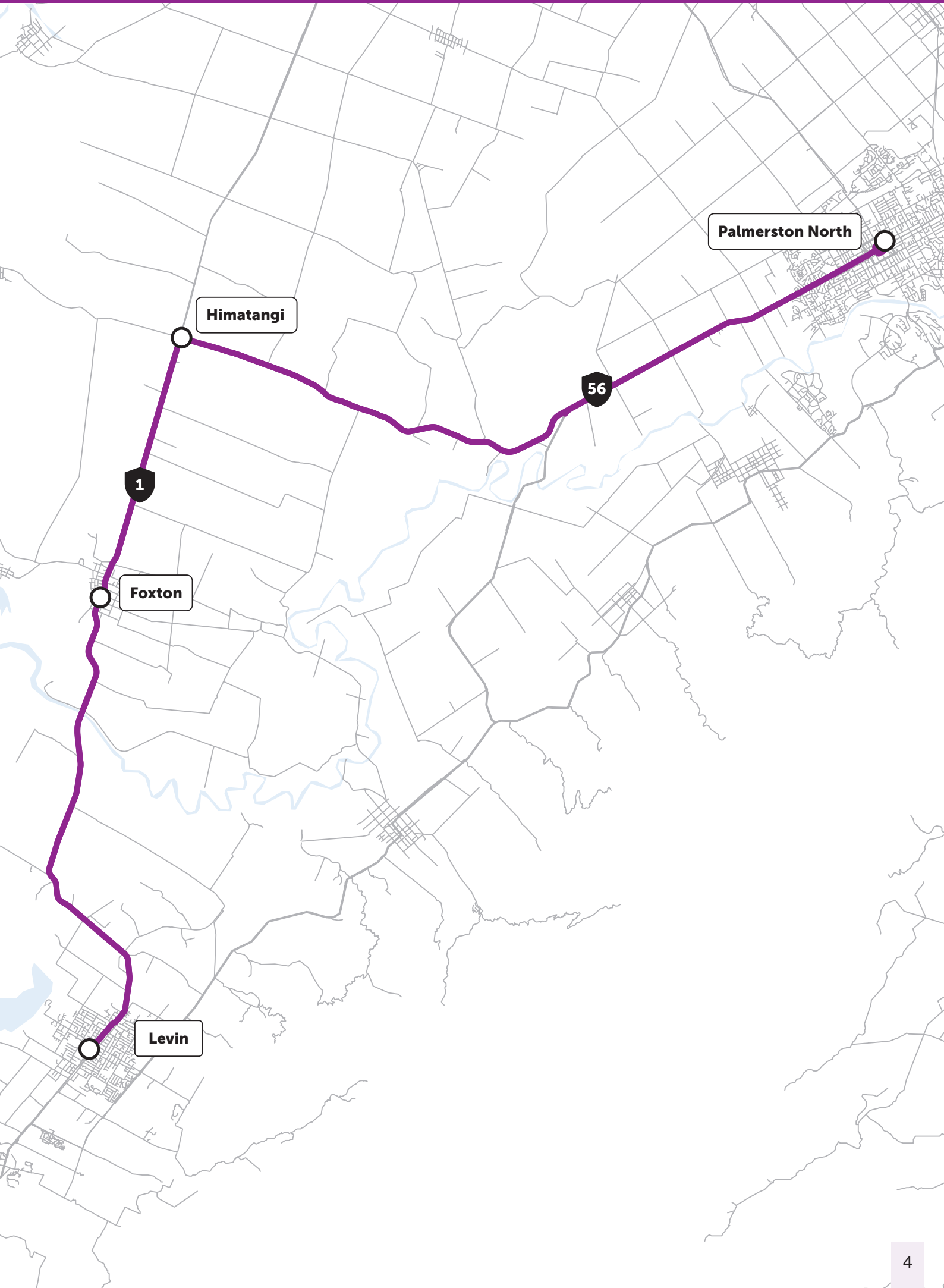
## Peak Commuter

### Levin → Palmerston North

Monday to Friday	Levin Te Takeretanga o Kura-hau-pō, Bath Street	Foxton Opposite St Mary's & Rainbow Dairy SH1	Himatangi Corner SH1 & Highway 56	Palmerston North Main Street Bus Hub
AM	6:50	7:05	7:10	7:35

### Palmerston North → Levin

Monday to Friday	Palmerston North UCOL	Palmerston North Main Street Bus Hub	Himatangi Corner SH1 & Highway 56	Foxton Opposite St Mary's & Rainbow Dairy SH1	Levin Te Takeretanga o Kura-hau-pō, Bath Street
PM	5:20	5:25	5:50	6:00	6:15



1

Foxton

Himatangi

56

Palmerston North

Levin



402

# Levin - Palmerston North

## Off-Peak Commuter

### Levin → Palmerston North



Monday only

Monday	Levin Te Takeretanga o Kura-hau-pō, Bath Street	Foxton Opposite St Mary's & Rainbow Dairy SH1	Himatangi Corner SH1 & Highway 56	Palmerston North Main Street Bus Hub
AM	9:15	9:30	9:35	10:00

### Palmerston North → Levin

Monday	Palmerston North Main Street Bus Hub	Himatangi Corner SH1 & Highway 56	Foxton Opposite St Mary's & Rainbow Dairy SH1	Levin Te Takeretanga o Kura-hau-pō, Bath Street
PM	2:35	3:00	3:10	3:25

### Levin → Palmerston North

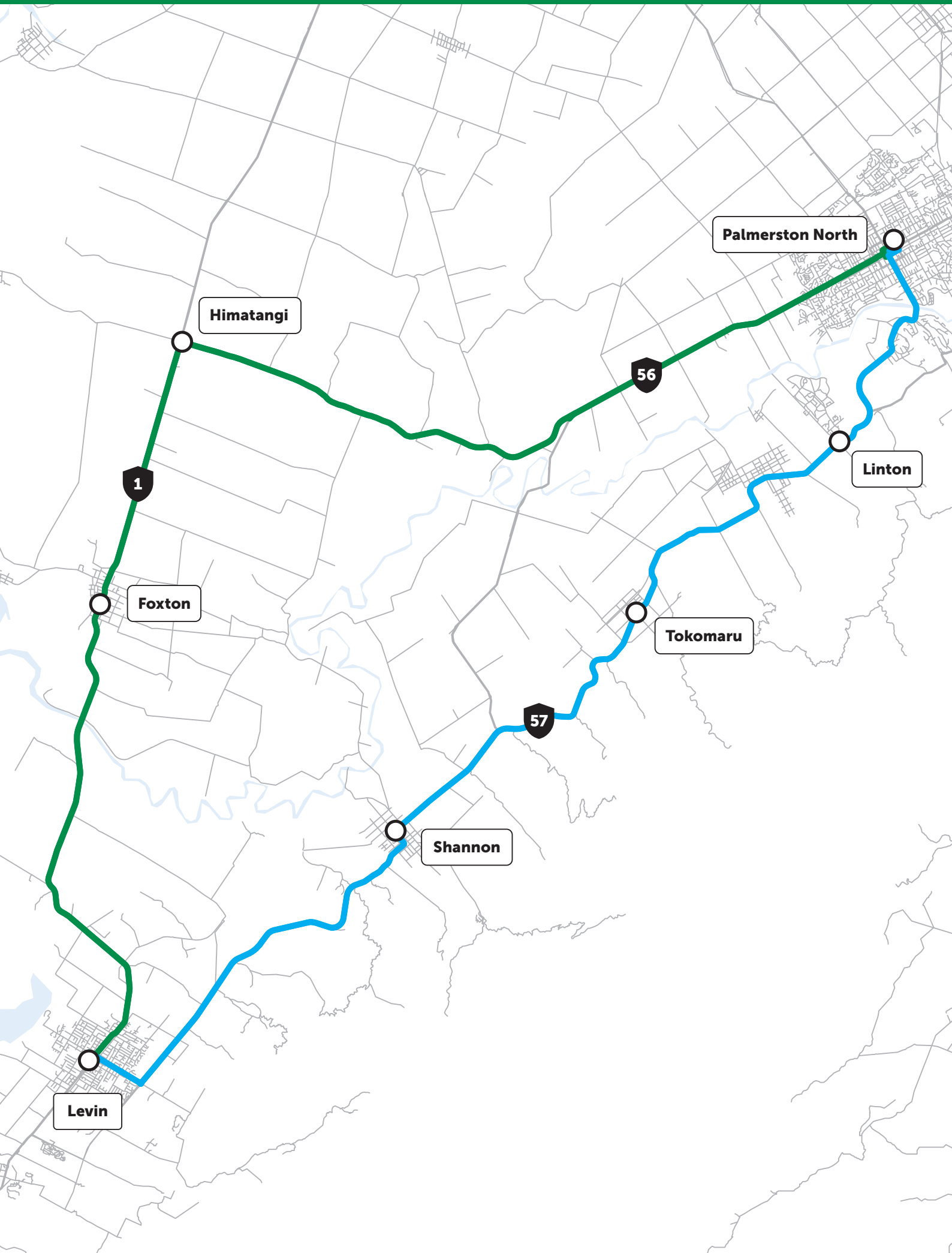


Wednesday only

Wednesday	Levin Te Takeretanga o Kura-hau-pō, Bath Street	Shannon Train station, Plimmer Terrace	Tokomaru Opposite Tokomaru School	Linton Opposite petrol station	Palmerston North Main Street Bus Hub
AM	9:15	9:33	9:45	9:54	10:10

### Palmerston North → Levin

Wednesday	Palmerston North Main Street Bus Hub	Linton Outside petrol station	Tokomaru Outside Tokomaru School	Shannon 5 Ballance St	Levin Te Takeretanga o Kura-hau-pō, Bath Street
PM	2:30	2:46	2:56	3:08	3:25





403

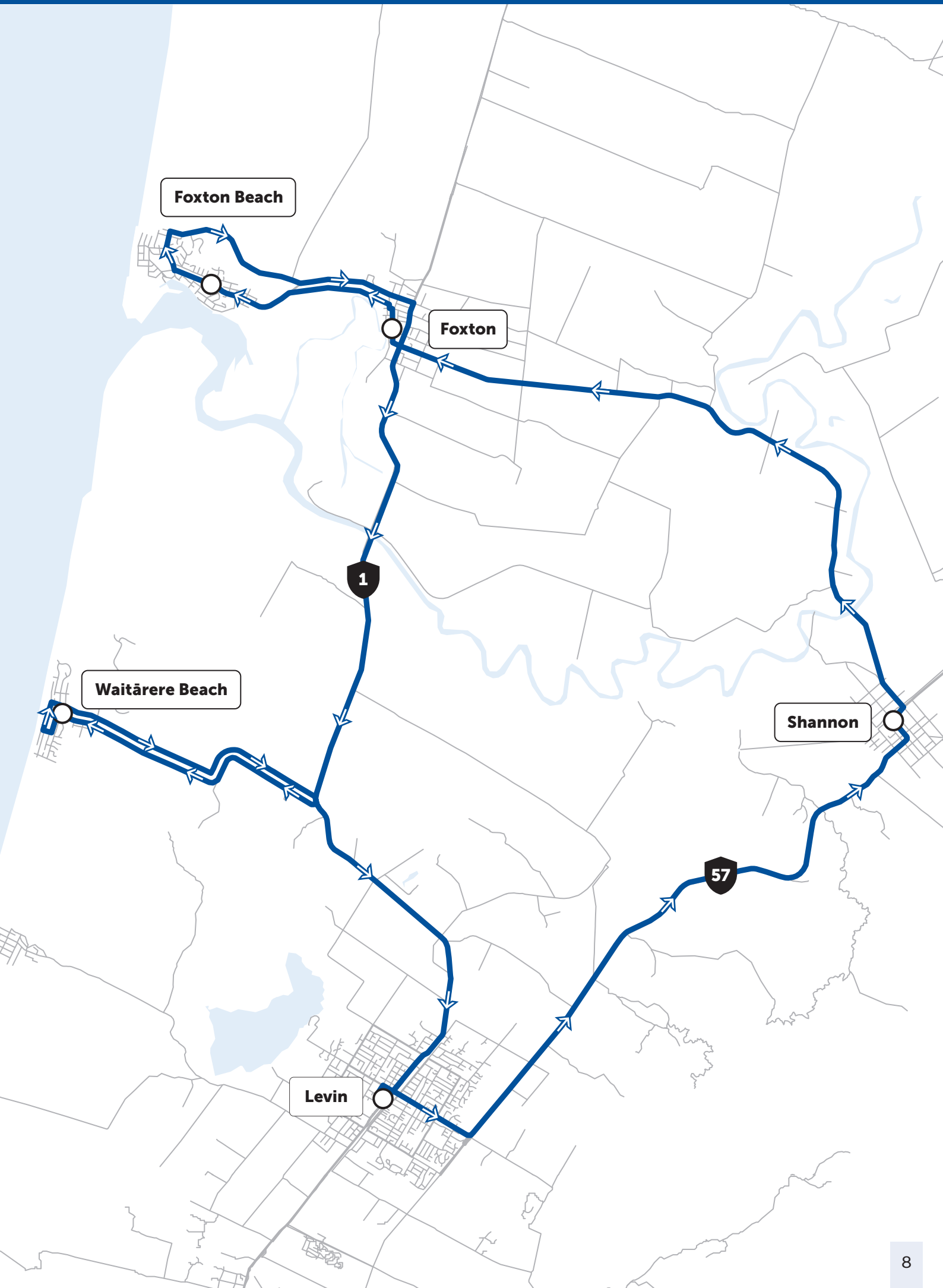
## A Day Out in Town

## Morning

<b>Friday</b>	<b>Levin</b> Te Takeretanga o Kura-hau-pō, Bath Street	<b>Shannon</b> Train station, Plimmer Terrace	<b>Foxtan Beach</b> Community Centre, Seabury Avenue	<b>Foxtan</b> De Molen Windmill, Main Street	<b>Waitāreere Beach</b> Outside Four Square, Waitāreere Beach Road	<b>Levin</b> Te Takeretanga o Kura-hau-pō, Bath Street
AM	9:15	9:30	10:00	10:10	10:25	10:45

## Afternoon

<b>Friday</b>	<b>Levin</b> Te Takeretanga o Kura-hau-pō, Bath Street	<b>Shannon</b> Train Station, Plimmer Terrace	<b>Foxtan Beach</b> Community Centre, Seabury Avenue	<b>Foxtan</b> De Molen Windmill, Main Street	<b>Waitāreere Beach</b> Outside Four Square, Waitāreere Beach Road	<b>Levin</b> Te Takeretanga o Kura-hau-pō, Bath Street
PM	1:45	2:00	2:30	2:40	2:55	3:15





404

## Levin - Waikanae

## Levin → Waikanae (Morning)

Tuesday and Thursday	Levin Te Takeretanga o Kura-hau-pō, Bath Street	Manakau Outside Manakau Bowling & Sports Club, Honi Taipua Street	Ōtaki Intercity Bus Shelter, Main Highway	Waikanae Train Station
AM	9:05	9:23	9:36	9:50

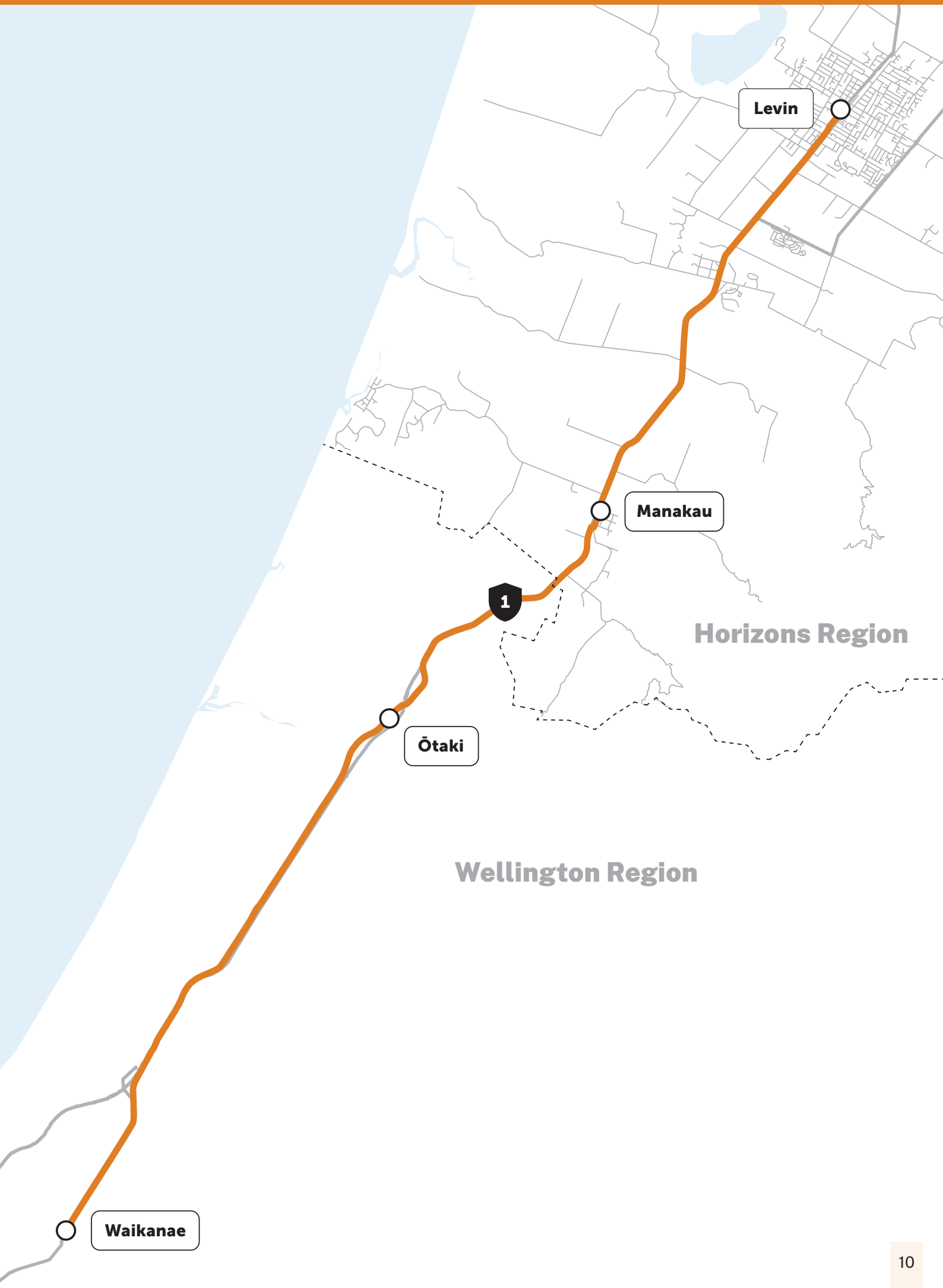
## Waikanae → Levin (Afternoon)

Tuesday and Thursday	Waikanae Train Station	Ōtaki Intercity Bus Shelter, Main Highway	Manakau Opposite Manakau Bowling & Sports Club, Honi Taipua Street	Levin Te Takeretanga o Kura-hau-pō, Bath Street
PM	3:00	3:26	3:38	3:45



This service is provided in conjunction with Metlink.

Please note: when seeking assistance or information from Metlink, this service is called the 291.



# Frequently asked questions

## Public Holidays

No services operate on public holidays.

## Help I've left something on the bus, who do I call?

Give the bus operator (Uzabus) a call on 06 356 4896. For any Metlink operated services, please call 0800 801 700. Please note, no responsibility will be accepted by the bus operator or Horizons Regional Council for lost property.

## I need to catch two buses, do I have to pay two fares?

As long as you catch the second bus within the hour of your original trip, transfers are free within the Horizons Region. If you're paying by Bee Card tag on and off both buses. If you're paying by cash make sure you have your original ticket with you. Transfers are not valid for return trips.

## Buses are wheelchair accessible, what does that mean?

Wheelchair accessible buses are low floored with no steps to climb up, and there is enough room for wheelchairs to fit. Please note, if your wheelchair takes up a space of more than 700mm wide and 1200mm long and/or has a combined weight (passenger and chair) of more than 240kg, it cannot be carried.

## Can I take an e-scooter on the bus?

Yes, you can. However, they will need to be placed clear of the aisles. If your scooter is in the wheelchair area, please remember wheelchair users have priority.

## Plan your journey

Use the map at the front of this book to find your current location and the best route to take to your destination. You can find the times your bus line runs by referring to the relevant timetable in this book. Alternatively, you can use the Transit app to plan your journey or call Horizons Regional Council on freephone 0508 800 800.

## Catching your bus

Be at the bus stop five minutes before the bus is expected to arrive. Remember, you can use the Transit app for real-time tracking of your bus to see how far away it is. Stand on the footpath near the front of the bus stop. Some bus stops are used by more than one route, so check the route number and destination displayed on the front of the bus as it approaches. Raise your arm as a signal to the driver that you want the bus to stop.

## On the bus

For your own safety and comfort, as well as those around you, please:

- Follow our Code of Conduct.
- Do not smoke/vape, eat food, play loud music, or leave items in the aisle.
- If the bus is busy, please offer your seat to someone who may need it more than you – for example someone who is older, pregnant, or travelling with young children.
- Relax and enjoy being driven.

## Leaving the bus

Press the button as you approach the stop where you want to get off. The bell rings, letting the driver know you want to get off at the next stop. Please ensure you allow enough time, when pushing the button, for the driver to stop smoothly and safely at your requested stop. Remember to tag off, otherwise you may be charged the cash fare. Please check you have all your belongings with you before leaving the bus.



**Download the Transit app  
for real-time tracking from  
Google Play or the App Store.**



GET IT ON  
**Google Play**



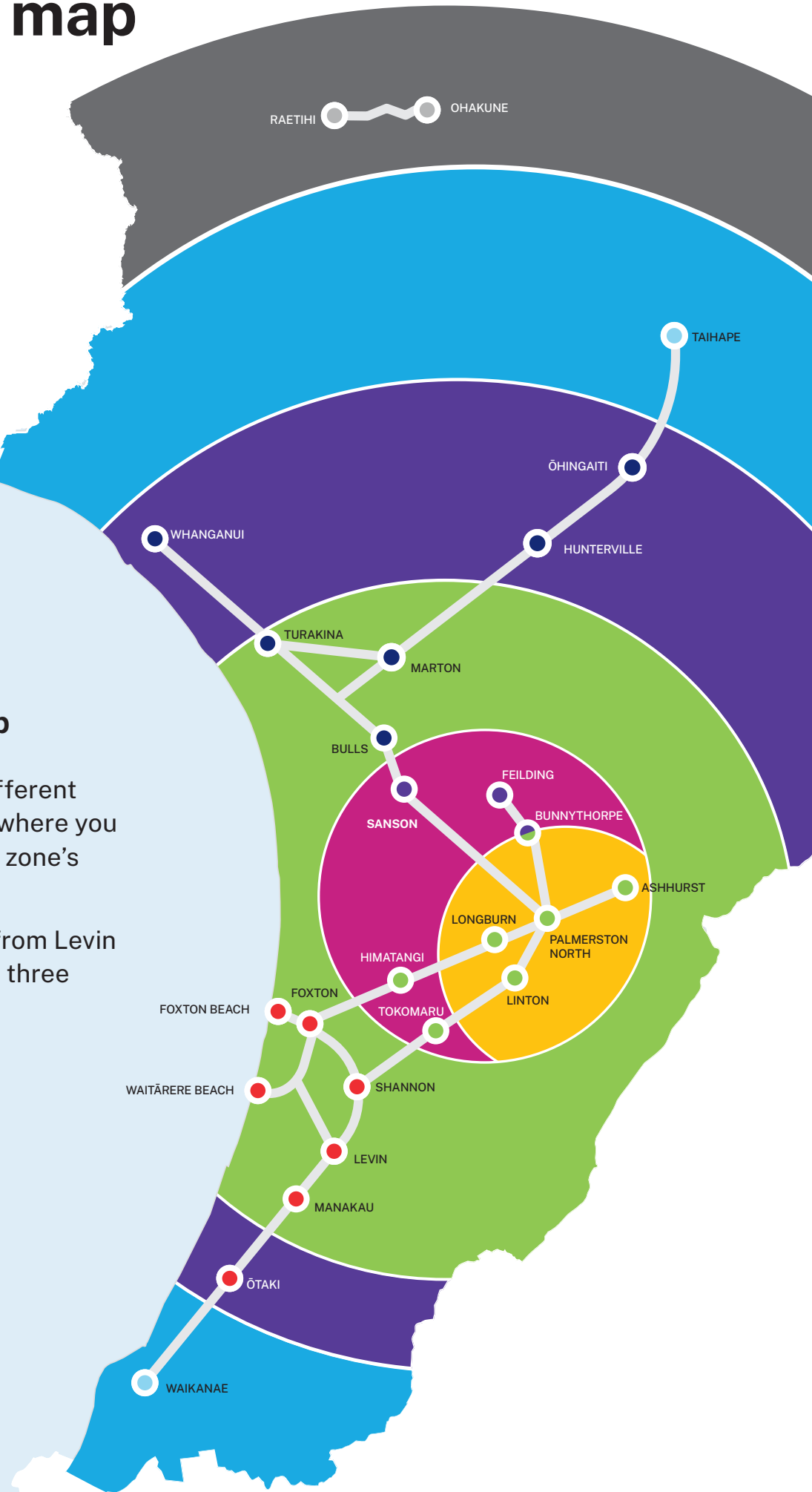
Download on the  
**App Store**

# Fare zone map

## How to use this map

Once you cross into a different colour on the map from where you started, you pay for that zone's trip when you tag off.

For example: travelling from Levin to Palmerston North is a three zone trip.



# Fares

Fares are subject to change.

	One zone	Two zones	Three zones	Four + zones
Adult cash	\$3.50	\$5.00	\$6.50	\$8
Adult Bee Card	\$2.20	\$3.85	\$5.50	\$7.15
Child (5-18 years) and Concessions*	\$1.30	\$2.65	\$3.96	\$5.28
Child Cash	\$1.50	\$3.00	\$4.50	\$6.00
Community Connect**	\$1.10	\$1.93	\$2.75	\$3.58
Children 4 and under	Free	Free	Free	Free

\*Concession fares apply when using a registered Bee Card.

Concession groups are: Children aged 5-18, tertiary students, ages 65+ and people on Total Mobility scheme for disability. Please note: Carers of people using the disability concession travel for free.

Child fares are the same whether paying by cash or Bee Card.

\*\* Community Connect is for Community Service Card holders with a registered Bee Card.

# Transfers

Free transfers are available across all services within the Horizons Region. This includes free transfers onto urban buses from regional routes.

As long as you are catching the second service within an hour after catching the first one, the transfer is free. If you use a Bee Card, this process is automatic. Just ensure you tag on and off each bus you use. You will be charged the fare for the most expensive of the two services.

If you are paying by cash, make sure you ask your driver for a paper ticket. Then on your next bus, show the driver this ticket for your free transfer.

# Fare capping

If you tag on and off with a registered Bee Card, your travel becomes free once you make a certain number of trips each week (Monday - Sunday).

Zones travelled	One	Two	Three	Four +
Fares capped at number of trips each week	8	7	6	6

Within zone travel is a one zone journey. Places which border a zone are a one zone journey, for example; Bunnythorpe.

If you hit your cap for trips through many zones, then you will get free travel for smaller trips. For example, someone commuting daily between Levin and Palmerston North for work (a three zone trip) during the week will end up getting free travel on Palmerston North urban services from Wednesday evening each week.

Fare capping is based on an individual's travel, activated by tagging on and off. You can still pay for other people's travel with your Bee Card, but this does not contribute to accessing the fare cap.

## What is a Bee Card?

Bee Cards are our electronic bus card. Bee Card makes travelling by bus easier – get your card online at [beecard.co.nz](http://beecard.co.nz), or on the bus. Bee Cards need to be registered to enable online top up, and to protect your balance if you lose your card. You can also manage multiple cards online.

## How much does it cost?

Bee Cards cost just \$5 to purchase. A minimum of \$5 top-up is required, and can be done with cash on the bus or online with a card. All replacement cards cost \$5 (includes postage/admin), and require a top up of \$5 or more. Please see [beecard.co.nz](http://beecard.co.nz) for full terms and conditions.



Get your Bee Card from the driver  
or online and register it today at:  
[beecard.co.nz](http://beecard.co.nz)





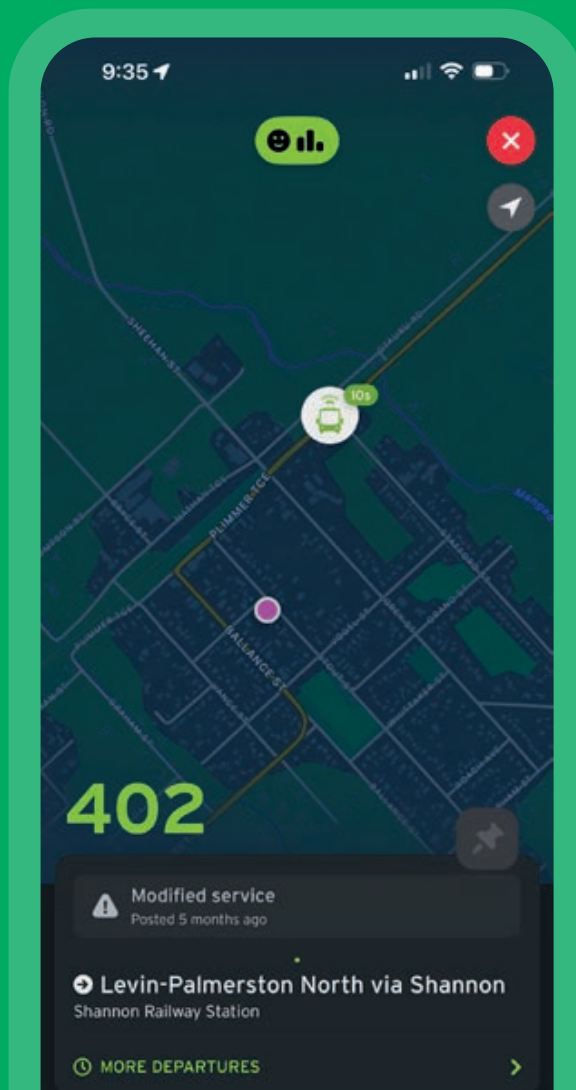
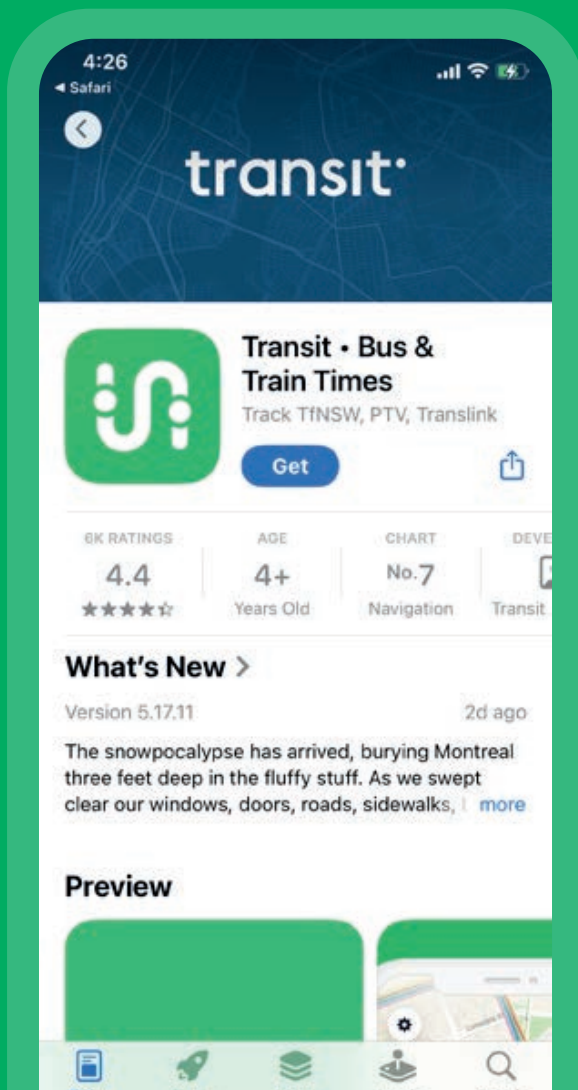
# transit



## Want to see where your bus is at? Check Transit!

The Transit app is our easy-to-use, dedicated bus app for the Horizons Region. Plan your trip, check real-time bus information, and get the latest service alerts, all in one place.

## Download Transit from the Google Play or Apple App Store today.



# CONNECT

HORIZONS REGIONAL TRANSPORT

  [connectregionaltransport](https://www.facebook.com/connectregionaltransport)

Brought to you by:



**horizons**  
REGIONAL COUNCIL

For more information visit  
[www.horizons.govt.nz](http://www.horizons.govt.nz)  
or freephone Horizons on **0508 800 800**