

2023

MAHERE HURIHANGA ĀHUARANGI

MANAWATŪ—WHANGANUI

Te Ao Māori

Putā noa te rohe whānui o Manawatū-Whanganui, kikī katoa te wāhi nei i ōna tini iwi, tini hapū, tini maunga, tini awa, tini moana, tini wāhi tapu, me ōna tini taiao taketake hoki. E mātua mōhio ana mātou kei reira anō ngā whakaaro, ngā tikanga, me ngā tirohanga a te Ao Māori, ā, e rerekē ana te tirohanga a te Ao Māori mō te taiao ki te tirohanga o te Ao o Tauīwi.

Koia nei ētahi o ngā tirohanga o te Ao Māori:

1. Kei ngā mea katoa, ki ngā wāhi katoa, kei reira ko te ihi, ko te wehi, ko te tapu, ko te mauri, me **te orokohanga mutunga kore.**
2. Kei ia mea, ahakoa te āhua, tōna ake mana, tōna ake whakapapa **e tūhono pū ana** i ngā mea katoa ki ō mātou nei mātua ki a Ranginui e tū ake nei, ki a Papatūānuku e takoto nei.
3. I tēnei ao, kāore ōna mutunga, ka ora tonu te whakapapa i roto i tēnei ao kikokiko me te ao wairua anō hoki. Ka noho tonu ko te ao kikokiko me te ao wairua i roto i te **maru kotahi.**
4. Ko te hononga i waenganui i a tātou me te ao nei, **he hononga whawhati kore, he hononga pūmau,** he hononga oranga whānui.
5. **He uri katoa tātou nā ngā atua,** ngā atua o te taiao, ngā kaitiaki, ngā taniwha, ngā momo wairua katoa.

Nā tēnei tirohanga motuhake nei, i hua mai he hononga hōhonu ki te taiao, he hononga taketake ake i waenganui i te hunga tangata me te taiao. He tapu anō hoki te hononga ki te taiao, ki reira ka kite ai ko ngā wāhi tapu me ngā tino wāhi i roto i te rohe whānui. Mai rānō a tangata whenua e noho tūhono ai ki te taiao,

nā ngā hononga whakapapa, hononga whānau anō hoki. Ko te takatū runga marae, ko te whai oranga i runga i ō rātou whenua, ētahi o ngā tauira o te oranga tonutanga o te hononga i waenganui i ngā tangata whenua me te taiao.

Mai rānō ngā tikanga, ngā kawa ake o te Māori kua tuku heke, tuku heke iho ki ngā uri whakaheke; ko ēnei tikanga, ko ēnei kawa te tūāpapa o ngā whakaaro o te Māori mō te taiao. Ngā hononga a te Māori ki te whenua, ki te moana, ki te rangi, ki te wai kua tuku heke ki ngā uri whakatipu mai rānō, he mātauranga ā-waha, he mātauranga kore mimiti hoki. E piri ngātahi ana ēnei hononga ki te taiao ki te mana o te tangata whenua hei ahikā mō te whenua. Nā ēnei mea katoa i hua mai he hononga hōhonu i waenganui i a tangata whenua me te taiao o te rohe nei; ko ngā iwi, ko ngā hapū o te rohe ngā kaitiaki matua o te whenua o te taiao hoki. E tuku heke tonu ana ngā mātauranga a ngā iwi me ngā hapū o te rohe nei ki tēnei whakatupuranga o nāiane, mā ēnei mātauranga ā-waha, ā-mahi hoki e ora tonu ai ngā tikanga me ngā kawa Māori, otirā, te iwi Māori hoki.

He rerekē ngā tikanga a tērā iwi, a tērā hapū. Kei ia iwi, kei ia hapū ōna ake kōrero tuku iho me ōna ake tirohanga ki te mana motuhake me te tino rangatiratanga o te tangata whenua.

Ko wai mātou?

I te tau 2021, nā ngā āhuetanga i pā mai ki te rohe nā te hurihanga āhuarangi, i whakaae mai ngā kaunihera toko waru o te rohe whānui nei ki te whakatū i te Kāhui Whakamahere Āhuarangi o Manawatū-Whanganui. I pōwhiri te rōpū nei i ngā iwi puta noa te rohe ki te tautohu i ētahi māngai mō te

komiti nei. Tokowhitu ngā māngai ā-iwi kei runga i te komiti, kei ia māngai ōna ake pūkenga, ōna ake wheako hei hāpai i te kaupapa nei, ā, ko rātou tonu ngā tāngata e puku mahi ana kia hono atu ngā whakaaro o te ao Māori i roto i ngā mahi a te rōpū nei.

E hono ngātahi ana ngā mātauranga me ngā tirohanga o te ao Māori me te ao whānui ki roto i tēnei rautaki whakamahere hei urupare ki te hurihanga āhuarangi. He mahere e āhei ana ki te whakamahi i te mātauranga Māori me te titiro ki ngā take matahuhua mā te hononga ki te taiao. Me ora tonu te taiao kia puāwai ngā hapori, nā reira ko ngā mahi whānui o te taiao, ā-ahurea, ā-pāpori, ā-ōhanga hoki he mahi me whakatutuki i āiane.

E mihi atu ana te komiti nei ki te mana whenua o ngā iwi me ngā hapū me te mana o ngā mātāpono o te Tiriti o Waitangi ki roto i ngā mahi me ngā kaupapa i waenganui i te kaunihera me te tangata whenua. Tae mai nei ki te mahi ngātahi, te tātuututanga, te mana motuhake, te kaitiakitanga, te mana taurite hoki.

Ko ngā mema o te komiti:

Ko Chris Shenton, rātou ko Hannah Rainforth, Ko Huhana Smith, ko James Kendrick, ko Jill Sheehy, ko Jonathan Proctor, ko Lorraine Stephenson, ko Andrew Tripe, ko Andy Watson, ko Bernie Wanden, ko Grant Smith, ko Helen Worboys, ko Rachel Keedwell, ko Tracey Collis, ko Weston Kirton.

E tuku mihi ana te komiti ki a Hamish McDouall rāua ko Don Cameron mō ā rāua mahi i runga i te komiti tae rānō ki te marama o Oketopa o te tau 2022.

Supported by



IHIRANGI

TE HURIHANGA ĀHUARANGI	4
NGĀ KŌRERO MATUA	5
TŌ TĀTOU ROHE.....	6
TE WHAKAWHANAKE MAHERE	7
NGĀ PĀNGA Ā-ROHE	8
TE HĀNGAI I TE MAHI Ā-MOTU, Ā-ROHE HOKI	10
NGĀ WHAKAAROTAU MŌ MANAWATŪ-WHANGANUI	12
NGĀ MAHI KA TAEA E TĀTOU	14
NGĀ KŌRERO WHAKATAUIRA	16

TE HURIHANGA ĀHUARANGI

4

Kei te rerekē haere te āhuarangi i roto tō tātou rohe.

E piki haere ana te waipuke me te mahi kino ki ngā kāinga me ngā huarahi. Ko ngā mea e ngākaunuitia ana e tātou e noho whakaraerae ana ki te hurihanga āhuarangi. Ki te kore tātou e aro atu ka kino haere ngā take pāpori me ngā take taiao.

Ko tā tēnei mahere hei whakamārama atu me pēhea nei e urupare atu ai tātou ki te hurihanga āhuarangi ki te rohe o Manawatu-Whanganui nei, ā, me te mahi tahi hei whakaiti i te raru ka puta pea.

Ko tā te Māori tirohanga he mōhio ki te whakapapa o ngā mea katoa me te aha ko ngā mātāpono kaitiakitanga hei ārahi nei i a tātou. Ko te tikanga kia tiakina te whenua i waiho mai ai e ō tātou mātua-tīpuna, hei whakarauora anō i te mana o te whenua, hei oranga hoki mō ā tātou uri whakaheke. Kia noho ko tō tātou nei taiao ake i te rohe nei hei whakaaro matua mō ā tātou urupare huhua ki te hurihanga āhuarangi.

He mea matua te oranga o te taiao mō te oranga ā-pāpori, ā-ōhanga hoki o ngā tāngata katoa e noho nei ki te rohe o Manawatu-Whanganui. Me titiro whakamua tātou ki ngā hapori e noho ana ki ngā whenua takutai, e whakahaumarua ai i ngā waipuke, te tiaki i ō tātou nei urupā me ērā atu wāhi tapu me te tiaki i ngā momo māori.

Me whai taiao tino ora hei tautoko i tētahi ōhanga hihiko o te rohe, mā tētahi hurihanga āhuarangi te mahi hī ika, te mahi ahuhenua me te mahi ngahere e pānga atu, inā hoki ngā huarahi me ngā pakihi tuku rawa.

Me āhei tātou ki te urutau me te whakamimiti i te tukuwaro. Ka tere te mahi ka nui atu ngā kōwhiringa hei whakapakari ake i te manawaroa o tō tātou nei hapori me tō tātou nei taiao.

Mā te mahi ngātahi i te taha o te kāwanatanga, ngā kaunihera ā-rohe, te tangata whenua, ngā pakihi, ngā hapori me ngā takitahi e puta mai ngā hua me ngā painga mō tō tātou nei rohe.

Kua tīmata kē ētahi kaupapa a te kaunihera me te hapori, tae atu ki te mahi whakahaumarua i te waipuke, te whakapai ake i te wairere o te tāone me ngā waka tūmatanui, ngā ara paihikara, me ngā ara hīkoi hoki.

Ko te kaupapa matua o te Mahere Hurihanga Āhuarangi i Manawatu-Whanganui ko te tautoko i tēnei mahi me te tohutohu atu ki ngā kaunihera me ngā hapori puta noa i te rohe nei e pēhea tātou e mahi tahi ai ki ngā take e kore e taea ai e tātou anō. Mā tētahi mahere e tino tika ana te hoahoa ka hāngai ā tātou nei mahi – ā-rohe, ā-motu hoki.

Ka titiro tēnei mahere ki ngā panononga ka taea e tātou e pai ake ai tō tātou oranga, e whakakaha ake ai i tā tātou ōhanga me te whakaiti i ngā pānga kino ki te taiao i taua wā tonu.

He nui tonu ā tātou nei whai wāhitanga hei arataki me te whakarato i ngā hangarau hou e whakarerekē ai i te āhua o tā tātou e haere nei, e kai nei, e pāhekoheko nei hoki tētahi ki tētahi. I kī mai tētahi kaitohutohu 'Kei a mātou tonu te mana o te kōwhiringa i tō tātou taha o te ao'. Me kōwhiri e tātou he āpōpō e kōingotia ana me te āhua o te mahi tahi hei whakatutuki – te ako tahi me te whakanui angitū hoki.

Nā Tākuta Hūhuna Smith rāua ko Tākuta Rachel Keedwell

Ngā Heamana Takirua o te Kāhui Whakamahere Āhuarangi

NGĀ KŌRERO MATUA



Rangitikei – Te Pū Ao

1 E hurihuri ana te āhuarangi i tēnei wā tonu. Taka ana te wā ka nui, ka rerekē hoki te pānga atu ki ō tātou whānau, ō tātou pāmu, ā tātou pakihī me ō tātau hapori hoki.

2 Ko te hurihanga āhuarangi tētahi āhuetanga o te hononga i waenga i te tangata me te taiao. Ko te tautoko i tētahi taiao ora me te whakaniko i Te Taiao te pūtahi o tā tātou urupare ki te āhuarangi hurihuri.

3 Me mahi tahi ngā kaunihera me ngā hapori, ngā tāngata whenua, me te kāwanatanga hei urutau ki te āhuarangi e hurihuri haere ana, kia manahau tō tātou rohe me, me te whakaiti iho i te tukuwaro.

4 I a tātou e urutau ana ki te hurihanga āhuarangi ka ū ngā kaunihera ki te rapa huarahi e tōkeke ai, e mana taurite ai hoki me te hāpai ake i ngā mātāpono o te Tiriti o Waitangi.

5 Ka tohutohu atu tēnei pūrongo ki ngā kaunihera tokowaru o te rohe me te whakatakoto whakaaro hei whakaiti iho i ā mātou mahi ki te hurihanga āhuarangi me te urutau atu ki ōna pānga mai ki Manawatū-Whanganui.

6 Me tautoko e te kāwanatanga ngā kaunihera hei tautoko i te urutau me te whakawhitinga.

7 He mahi ka taea ai e tātou te mahi i āianeī kia kaha ake ai te manahau ki ngā pānga mai o te hurihanga āhuarangi. Ina mahi tēnā i tāna, tēnā i tāna ka iti haere tā mātou tapuwae waro me te kaha hoki o aua pānga.

8 Mēnā ka mahia e tātou i āianeī kia urutau me te whakaiti i ngā tukuwaro ka nui atu ngā kōwhiringa ki te urupare atu ki te hurihanga āhuarangi.

TŌ TĀTOU ROHE

Ko te rohe o
Manawatū-Whanganui
ka tīmata mai i
Ruapehu ki te raki, tae
rānō ki Horowhenua
ki te tonga, rere
whakateuru ana
ki Whanganui, ki
Tararua i te rāwhiti.

Tōna
250,000
TĀNGATA E KĪ ANA
ko tōku kāinga tēnei.

**E 7 Ō MĀTOU
TAKIWĀ**

Ā, e āhua

89%

o te hunga kaiutu rēti kei
ngā tāone noho ana.

**E 206,000
HEKETEA 18%**

rānei o tō te motu whenua
haumako kei te rohe nei.

**E 230 NGĀ ROTO
Ō MĀTOU**

E 67 ngā tāhuahua, e 44 ngā awa
nui, e 24 ngā horo whenua,
e 7 ngā roto puia, e 88 ngā
kurawai horihori.

**E 2.2 MIRIONA
HEKETEA WHENUA**

te rahi o te rohe o Manawatū-
Whanganui. 8% o ngā whenua katoa
o te motu kei te rohe nei, tāpiri atu
ko te 31,000 heketea o te moana.

E 3

ngā awa matua

E 2 NGĀ TAKUTAI

me te Mānia Pū kei tō mātou rohe.

Ki a mātou tētahi o ngā wāhi pukepuke
rahi katoa o Aotearoa, ā,

**KOIA HOKI TE WĀHI
HOROWHENUA
RAWA ATU O NGĀ
ROHE KATOA.**

E 35,000KM

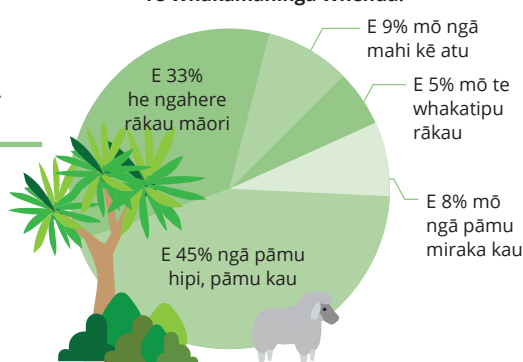
te maha o ngā arawai kei
roto i te rohe nei o Horizons.

E āhua

109,000

ngā kaiutu rēti e āwhina i
ngā ngā hōtaka mahi.

Te Whakamahinga Whenua:



Te toharite o te marangai mō ia
tau ka tau ki te takiwā o te

**900MM KI TE
2,000MM.**

Tata ki te hauwhā o ngā
tāngata o te rohe he Māori.

He tokomaha ngā iwi me ngā hapū,

**Ā, NEKE ATU I TE
60 NGĀ MARAE.**

**E 40 NGĀ
WAHAPŪ**

i tō tātou rohe, ko te wahapū o
Manawatū tētahi, he wāhi kua
tohungia hei wāhi RAMSAR.

TE WHAKAWHANAKE MAHERE

I te tau 2022 i whakawhanake ai te Kāhui Whakamahere Āhuarangi i te Rautaki Āhuarangi ā-Rohe o Manawatū-Whanganui.

I aro atu mātou ki ngā kōrero o te Aromatawai Tūraru Panoni i puta mai i te marama o Hepetema 2021, te mōhiohio mō tō te rohe tukuwaro ngā kaupapa here a te Kāwanatanga. I whakaaro mātou ki ā mātou tino wero āhuarangi hurihuri me te pēhea tātau e āhei ai kia mauritau te mahi tahi.

I kī mai te tangata whenua e pēhea rātou e urupare atu ana ki te āhuarangi hurihuri hei tiaki i te taiao me ngā hāpori. I kōrero atu hoki mātou ki ngā kaunihera rangatahi o Te Papaioea me Whanganui, e pai ake ai te māramatanga ki ō ngā rangatahi tirohanga.

He tīmatanga noa iho aua kōrerorero – pērā i tēnei mahere ia – ka haere tonu ēnei kōrerorero me te hāpori whānui mō te hurihuri haere o tō tātou āhuarangi.

Kua tuhia hoki tēnei Mahere Hurihanga Āhuarangi Manawatū-Whanganui ki te Reo Pākehā hoki.

‘Ka arotahi atu tā mātou mahere ki te pēhea e mahi ngātahi ai – ngā kaunihera, te tangata whenua, me ngā hāpori ki te wero atu ki ngā take e kore e taea e mātou anake’.

Tākuta Hūhana Smith

NGĀ PĀNGA Ā-ROHE

He whānui ngā pānga o te hurihanga āhuarangi, karekare atu ana ki tua o ngā tauira huarere hei whakararu i ngā rawa tangata me te āhua ā-roto o ngā hapori, te rerenga rauropi, me te hauora tangata.

Ka tīpakotia e te Aromatawai Tūraru Āhuarangi Manawatū-Whanganui ngā momo tūraru ki ngā takiwā o tō tātou rohe kanorau.

ĒTAHI ATU PĀNGA KI TE MĀORI

Ka tino whai pāngā mai pea ngā āhuatanga kino o te hurihanga āhuarangi ki te Māori nā tō rātou whanaungatanga ki te taiao, ki ngā tino āhuatanga ā-ahurea me ngā pānga hoki o tō tātou koroni o mua.

<https://environment.govt.nz/facts-and-science/climate-change/how-climate-change-affects-maori/>

https://www.horizons.govt.nz/HRC/media/Data/20210902_Horizons-CCRA_Report-signed_1.pdf

NGĀ PĀNGA

A **Ngā Whenua Pukepuke:** Ka raru ngā rori nā te horonga o te whenua me ngā ngāhorohoro. Ka raru ngā māra kai me te taha dhanga i te huarere tino kino. Ka piki mai te tūraru ahi.

E **Ngā Mānia:** Ka pakaru ngā whare, ngā wāhi tūmatanui, ngā hanganga hoki i te waipuke. Ka raru ngā māra kai i te tauraki.

I **Ngā Wahapū:** Ka pā mai te horonga whenua, me te waipuke ki ētahi wāhi o te takutai – ka pakaru ngā whare pakihī, ngā whare noho me te hanganga ngoi.

O **Ngā Pānga ā-Hapori:** Ka tau mai huanga whakatoihara hei pānga, hei utu nui ki te hapori whānui.

U **Ngā Mahi Tāpoi:** He iti hukupapa me te tio, ka raru te ohaoha.

H **Ngā Tāone:** Ko ngā horonga whenua me ngā waipuke ā-uta te tūraru nui ki ngā wāhi pērā i Te Papaioea. Ko ngā huarere kino. Ko te wai ka raru i te iti o te ua me te tauraki.

K **Tohu*:** Panoni tohu ehara i te mea tino pono, engari ka pāngia te mahi whakatō kai, te kohi kai me te whakangau.

M Ko te tino whakararu **marae me ngā urupā** i te waipuke me te horowhenua.

N Ko te **ngaro o ngā momo taonga** i rō wai māori, i runga whenua, i te takutai hoki i te āhuarangi e mahana haere ana.

P Ko te **Manaakitanga** ka raru ina kāore e taea te whāngai manuhiri ki ngā kai rangatira o te kāinga, ā, ka pakaru ngā marae.

R Ko te **tikanga me te mātauranga** ka ngaro mō ngā rauemi e raru ai ngā uri whakaheke.

1-5 **NGĀ RANGAHAU WHAKAPŪAHO**
Tirohia ngā whārangi 16 ki te 23 mō ngā rangahau whakapūaho e pā ana ki te Hurihanga Āhuarangi kua tīmata kētia.

* Ko te tohu e kīia ana (ka te puawai o ngā puā, te wā wehe o te manu heke, te mahuta ake o tētahi whetū i te atapō), tērā i whāia ai e Māori hei tiroiro panoningo o te taiao.



Koia nei te mapi e whakaaturia ana ngā mōrearea nui mō ngā rohe kaunihera me ngā mōrearea nui puta noa i te rohe whānui.

**TIKANGA ME TE
MĀTAURANGA**

TE HĀNGAI I TE MAHI Ā-MOTU, Ā-ROHE HOKI

10

HEI WHAKAWHANAKE I TĀ MĀTOU MAHERE KUA ARO ATU KI TE HOROPAKI Ā-MOTU, Ā-AO.

E mōhiotia ana ngā kaiārahi o te rohe, me mahi ngātahi me te kāwanatanga hei aro atu ki te hurihanga āhuarangi. He take ka puta hei mahi i te wā ka whanake haere te kaupapa here ā-motu, kia tutuki ai ngā hiahia o te rohe.

I whakaputaina te Mahere Whakaheke Tukanga ā-Motu i te marama o Akuhata 2022. Ko tōna whāinga kia riro mai i ngā hapori he mōhiohio, he tautoko hoki kia rite mai mō ngā pānga o te hurihanga āhuarangi.

Ko te mahere tuatahi ka aro atu kia whakatakotoria ngā mahi a te Kāwanatanga e tika ai ngā whakatau ā-tūraru nei, kia kōkiritia te whakawhanake manawaroa āhuarangi ki ngā wāhi tika, te āwhina i ngā hapori hei aromatawai kōwhiringa urutau (tae atu ki te āhuru mōwai), me te whakararau iho i te manawaroa āhuarangi ki roto ki ngā mahi katoa a te Kāwanatanga.

Kua tīmata kē ngā mahi whakahou o te Mahere Whakahaere Tukanga ā-Motu tae atu ki te whakahoutanga o ngā whakahaere rawa, i waenga i te kāwanatanga ā-rohe me te kāwanatanga matua te arotakenga ā-rohe, me te whakahou toru wai.

Kua herea te kāwanatanga kia tūhura i te haumi rua me ngā kāwanatanga ā-rohe mō te whakahaumarua waipuke.

E ai ki te Mahere Whakahaere Tukanga ā-Motu (NAP), e toru ngā kawenga matua mā ngā kaunihera ā-rohe.

TE WHAKARATO HANGANGA, Ā, KIA MANAWAROA KI TE HURIHANGA ĀHUARANGI

TE WHAKAMAHERE ME TE WHAKARITE WHAKAWHANAKE Ā-ROHE

KIA TŪ HEI POKAPŪ E TŪTATA ANA KI NGĀ HAPORI WHAKARAERAĒ.

'E whakapono ana mātou me mahi ngātahi te kāwanatanga me ngā kaunihera ki te whakatatū i ngā uinga tahua, kia pai ai hoki ngā tukanga – mā te whakapai ake i ngā ara ka tautoko i tā ngā hapori urupare ki hurihanga āhuarangi'

Tākuta Rachel Keedwell



Te awa o Manawatū

I TE MARAMA O HARATUA 2022 I WHAKAPUTAINA E TE KĀWANATANGA NGĀ PŪTEA TUKUWARO WHAKAMUTUNGA MŌ NGĀ TAU 2022-35 ME TĒTAHI MAHERE WHAKAITI TUKUWARO.

KEI TE ERP HE ARONGA KIA WHAKAMANA I TE MĀORI.

Mā te ERP ngā kawatau i whakakahangia ai i whakahoungia ai rānei, mā ngā kaunihera:

- Te tautoko ā-pūtea nei i te hanganga ā-rohe.
- Te whakarato i ngā otinga ā-Ao Māori nei, ā-tāiao nei.
- Te kōkiri i tētahi ōhanga porowhita, me te aukati i te tukupara parakore ki ngā ruapara.
- Te whakaiti iho i ngā manomita ka haeretia (tae atu ki ngā tino whāinga mō Te Papaioea).
- Whakatū hanganga mō te hikoi me te eke paihikara, tae atu ki ngā mahere whakahere waka tata ana ki ngā kura.

Ka whakarite te Kāwanatanga ki te mahi ngātahi me te Māori:

- Hei whakararau i te mahi tahi me te tū tangata.
- Hei tautoko i te rautaki ā-Māori nei me te whakarite kia whakatairanga i Te Ao Māori o roto mai i te uruparenga āhuarangi kia hāngai ki ngā tikanga me ngā kawa.
- Hei tautoko ā-pūtea nei i ngā kaupapa Māori, ngā mahi tangata Māori me ngā otinga.

- Te tautoko i ngā mahere whakawhiti a ngā hāpori.
- Te akiaki i ngā tāngata ki te whakamahi i ngā waka tūmatanui.
- Te whakaiti i te tukuwaro, te waihanga ngao, me te tautoko i te hangarua.
- Te tautoko hanga whare, te whakahou whare hoki.
- Te whakarite i ngā tohutohu ā-motu i raro i te Ture Natural & Built Environments Act me te Anga Mahere a-Motu tae atu ki te whakamahere mō te āhua ā-tāone pai.

Kei te whakawhanake i ngā ture whakamahere rautaki, me te aha, he taputapu pai i tā mātou uruparenga āhuarangi. Heoi anō, ko tōna pāi ka hāngai ki te pai o te raraunga me ngā kōrerorero. Mā tā mātou mahi o āianei ka mauritau te whakamahere whaitua.

NGĀ WHAKAAROTAU MŌ MANAWATŪ- WHANGANUI

12

**KIA WHAKATINANATIA
TĒNEI MAHERE ME WHAI
HAUMI HEI WHAKAPAI AKE
I NGĀ HUARAHI ME TE TAHA
WHAKAHAERE WAI TE WAI
MARANGAI, TE WHAKATIKA
TŪRARU, ME TE AKIAKI I
NGĀ MAHI WHAKAWHANAKE
ĀHUARANGI-MANAHAU.**

**I ĒTAHI WĀ, ME WHAKAARO
KI NGĀ MAHI O MUA.
ME WHAI HAUMI NGĀ
WHANAUNGATANGA HOKI
INĀ HOKI KA TAUTOKO NGĀ
KAUNIHERA I NGĀ HAPORI
MĀ TE WHAKAWHITINGA
KEI MUA.**

Kua tīmata kē ngā rōpū ki te wero atu ki te hurihanga āhuarangi. Kei ngā Rangahau Whakapūaho ētahi o ēnei kaupapa i ngā whārangi e whai ake nei. E mahi ngātahi ana ngā kaunihera, ngā iwi, me ngā hapori me Te Kunenga ki Pūrehuroa ki te whakawhanake mahere urupare āhuarangi ki Tangimoana me Pūtiki. Ko tētahi kaupapa ōrite kua mutu me te hapori ki Anzac Parade i Whanganui.

Ko tā tēnei mahere he āwhina i ngā whakatau a ngā kaunihera me ngā kōrero a ngā hapori mō ngā whakaarotau, ngā tukanga me te pūtea. He tūāpapa tēnei kia mahi ngātahi tātou hei urupare atu i te hurihanga āhuarangi, kia pai tō tātou rohe hei wāhi mō ngā reanga o āpōpō.

**Ngā tohutohu a te Kāhui
Whakamahere Āhuarangi mō ngā
kaunihera, kia ū ki ēnei tū mahi:**

- He whakaarotau ki ngā otinga ā-taiao mō te waipuke, ngā take takutai moana, wai marangai, me te ngāhorohoro.
- He whakararau i ngā whakapae panoniga o te marangai (te tūraru tauraki, te waipuke, me te ngāhorohoro) me ngā pānga ki te kanorau koiora me te whakahaere riu (Kaunihera ā-Rohe).

- He arotake i ngā whakaritenga mahere hei akiaki i te whakahaere wai marangai me ngā puna pupuri wai (ki runga pāmu).
- He whakaiti i te huranga ki ngā pūmate mā te aukati i te whakawhanake wāhi nui, te waipuke, te ngāhorohoro rānei. Arai atu ngā wāhi whakatāone mai i ngā mōreareatanga ka puta mai nā te hurihanga āhuarangi, pērā i te waipuke me te horo whenua.
- He whakaiti i ngā haerenga poto noa iho mā te whakawhanake i te hoahoa pūtahi tāone me te whakaarotau ki te hanganga ā-waka (Kaunihera ā-Rohe).
- He aromatawai me te whakahaere tūraru āhuarangi ki ngā rātonga hapori me ngā hanganga matua.
- He rearua ngā mahi hei aro atu ki ngā take o naiane, e raru ana i te hurihanga āhuarangi pēnei i te oranga wai, te kanorau koiora, te waipuke me te ngāhorohoro.
- He mahi tahi me ngā hapori noho mōrearea ki te whakawhanake mahere urutau (tae atu ki ngā kaupapa ā-hapori).
- He waeine me te whakaiti i ngā tukuwaro mai i ngā mahi a ngā kaunihera.

E MŌHIO WHĀNUITIA NGĀ KAUNIHERA O TŌ TĀTAU ROHE KI NGĀ ĀHUATANGA KA PUTA MAI I TE HURIHANGA ĀHUARANGI:

Te whakamana me te whakakaha i ngā hāpori.

Te hāpai i ngā mahi mo te taiao.

Te whakatika i ngā raruraru e mohiotia ana.

Te tautoko i ngā whakataunga pai.



Te awa o Manawatū, Te Papaioea

- He whakauru mai i te tukuwaro me ngā otinga ā-taiao i roto i ngā kaupapa here a te kaunihera.
- Heahi tahi me ngā mema o te Komiti ki te mahi tahi me ngā rangatahi, ngā hapori, hei tautoko i ngā mahi āhuarangi ā-rohe.
- He tohatoha rauemi hei kōkiri mahi hei hanga whanaungatanga ki te tangata whenua me ngā hapori.
- He kaha urupare atu ki ngā tohuotuhou a te Kāwanatanga e taea ai te mahi atu anō ā-rohe nei ki te hurihanga āhuarangi.
- He whakararau mai i tēnei uruparengahā tahitanga ki tā tēnā kaunihera mahere ake me tā tēnā.

Ka whakatauria e te Kāhui Whakamahere Āhuarangi hei whakahaere i ngā tino kaupapa mahi tahitanga:

- Kia tautoko i te tuari urupare ā-mātauranga ki te hurihanga āhuarangi.
- Kia wātea whānui ngā mōhiohio e tautoko ana i mahi takitahi me te mahi hapori.
- Kia tautohu me te whakaarotau i te mōhiohio hei arataki i ngā whakatau mō ngā tau e heke mai nei (pēnei i te mahere urutau, te whakarite rautaki, me ngā whakatau haumi).

- Kia whakaurua ngā matapae panoni o te kaha heke ua ki roto ki te whakatauirā wai marangai, te putanga wai, me te tūraru waipuke mō ngā wāhi taupori ka tipu haere.
- Kia tautohu i ngā hapori hei kaha tautoko i te urupare hurihanga āhuarangi.
- Kia kaha te whakamārama atu i ngā pānga ki te tangata whenua; me te pēhea ngā kaunihera e taea ai te awhina.
- Kia hanga me te whakarite i tētahi rautaki tuku para ā-rohe.
- Kia meatia te tautoko o te kāwanatanga mō te whakawhitinga a tō tātou nei rohe me te hāngai i tō te rohe urupare ki tā te kāwanatanga ahuanga.
- Kia aroturuki i te mauritau o tēnei mahere, me te whakahou anō ina ka puta mai he mōhiohio hou.
- Tūhuratia:
 - Ngā pānga hauropi a tētahi āhuarangi e hurihuri ana ki tō tātou rohe; me te pēhea tātou e tautoko ai i ngā pūnaha hauropi, e ora ana, e tūhono ana me te kanorau koiora taketake.
 - Ngā huarahi kia manahau te tuku kai (tae atu ki ngā mahinga kai) ki te hurihanga āhuarangi.

- Ngā kōwhiringa hei whakapai ake i te kaha o te ngao me te manahau o ngā whare.
- Te tika o mahi ngāherehere, pērā i ngā mahi whakatipu rākau māori hei wāhanga o tā te rohe urupare āhuarangi (te whakauru mai i te kanorau koiora, te patu kīrearea, te raupatu tukuwaro, te horo whenua, tūraru ahi, me ētahi atu huanga).

E mihi ana te Kāhui Whakamahere Āhuarangi i ngā mahi arataki a te Komiti Waka ā-rohe e whakaiti haere ana i ō te rohe tukuwaro. Mā te mahere waka kōmitimiti te mahi āhuarangi whānui e tautoko:

- Mā te whakapiki i ngā waka tūmatanui.
- Mā te whakakore i te whakamahahi waka mō ngā haerenga poto.
- Mā te āwhina kia haumarū, kia pai hoki te haere mā runga waka.
- Mā te whakapai ake i te whakamahahi tereina me te hanganga wāpu.

NGĀ MAHI KA TAEA E TĀTOU

He mahi e taea nei e tātou kia manahau ō tātou hapori, ngā whare, kia iti ō tātou tapuwae waro me te whakapai ake i tō tātou aronga i te wā tonu.

14

Te whakapakari ake i te manahau hapori, manahau kāinga



Te wai

Purihia wai ua mō ngā wā ohotata me te whakamāmā i te iti wai o te raumati.



Whakatō rākau

Hei whakamarumaruru i te raumati.



Hanga whare, whakahou rānei

E wātea ana ngā tohunga pūtea hei āwhina kia mahana, kia maroke, kia iti hoki te utu hei whakahaere i ngā kāinga, ērā atu whare me te whakaiti tukuwaro hoki.



Inihua ā-whare, ā-rawa

Kia noho mārire o te wā e nui haere ana te āwhā me te waipuke.



Ārai whare

Kia noho mahana tō whare i te takurua, kia mātaotao i te raumati. Kei te kāwanatanga he pūtea Warmer Kiwi Homes hei ārai, hei hoko pūrere whakamahana mō ngā kāinga rawakore.



Whakarite kāinga rua

Ka pēhea a hurihanga āhuarangi e pānga atu ki tō kāinga? Ka aha koe i te wā ohotata? Māu e aha kia noho haumaruru te whānau?

Whakaiti ana
i tā tātou
tapuwae waro



Hokohoko

Mā te whakamahere i āu kai mō te wiki ka iti te hoko kai hari me te kohuki hei whiri kai mō te tunu. Mā te hoko 'tukurua' ka penapena koe i āu moni ka roa ake te pupuri kākahu, pupuri rāwa.



Ngā Haerenga

Mā te whakamahi waka tūmatanui, te hīkoi, te eke paihikara rānei ka iti haere te tapuwae waro, ā, ka whakapai ake hoki pea i tō hauora. Tōnā 19% o te tukuwaro o Aotearoa i ahu mai i ngā waka: mā te rerekē i tō haerenga ki te mahi mō tētahi rā o te wiki ka rerekē te tukuwaro.



Ākina ētahi atu

Me āta haere me te kōrero ki ōu hoa, tō whānau, mō tō tātou āhuarangi e hurihuri ana me ngā mahi ka taea. Mēnā kua penapena moni koe mā te ārai kāinga, mā te eke paihikara rānei, kī atu ki a rātou.



Kai

Me whakaaro ki tētahi kai mīti kore i ia wiki. E ai ki tā te Ōtākau Whakaihū Waka rangahau ka heke ngā tuku hā o te kai a ngāi kiwi kia 7 ōrau ina kai huawhenua kē tātou kua ko te mīti mō tētahi kai i ia wiki.



**I te kāinga,
ki runga marae**

Whakatō rākau, whakaiti i te whakamahinga wai, hangaruatia, ā, ngā mokamoka para, kua e whakapau hiko mō te kore noa. Hurihia ngā pūrāma ki ngā pūrāma LED, ka penapena hiko, ka iti iho tāu nama hiko.

**‘MĀ TE MAHI
TAKITAHĪ KA
HĪKOI ATU KI
TE PANONI
Ā-PŪNAHA’**

Tākuta Rachel Keedwell

Kei te whārangi ipurangi a EECA Gen Less ētahi whakaaro mō te pēhea e whakaiti ai i tō tapuwae waro. He tohutohu, he rauemi anō hoki mā ngā pakihi: genless.govt.nz

Kei te Manatū mō te Taiao ētahi tuwhiri mō te whakaiti tukuwaro i runga marae, i tō kāinga hoki: environment.govt.nz/what-you-can-do/

Toro atu ki te whārangi ipurangi a Horizon's Regional Council mō ētahi whakaaro – mō ngā mahi ka taea – mō te rapa pūtea mō tō ake kaupapa: horizons.govt.nz/climate

Ka tautoko a [Clean Car Discount](#) i te huri kia iti kia kore rānei te tukuwaro i ngā motokā.

Kei [Future Fit](#) he tirohanga mō tō pānga mai ki a Papatūānuku, ā, kā āwhina i a koe ki te rapa huarahi kia iti iho ai tō ake tapuwae waro.



TE MANAHAU ĀHUARANGI Ā-TAIAO

Tūtū te tai i te taha o te awa o Ōhau e paratau ana ngā inanga, ā, ka whakawhānui atu i te rohe kōreporepo mā te kaha whakatō otaota māori.

16

**KO TE WHAKATŪ
KŌREPOREPO HE MAHI ITI
TE UTU HEI TIAKI WHENUA
I NGĀ WAIPUKE, MĀ KONEI
HOKI KA MANAHAU AKE
NGĀ WHENUA TAKUTAI.**

Ko tētahi taurira, ko te whakahoutanga o te pāmū takutai o Tahamata i te tonga o Taitoko he kaupapa ā-iwi, ā-hapū i ngā tahataha o te awa o Ōhau.

I whakatauria e te Poari kia whakarite kaupapa hei tiaki i te kaupapa i te tūraru waipuke, tōna nui, tōna auau.

479-HEKETEA

E 520 ngā kau kei te Pāmū Kütētē Kau nei.

I TĪMATA NGĀ TAKE TAIAO I NGĀ TAU 1972-1974.

I te wā i autakina, i aukatia rānei te awa o Ōhau hei whakawhanake i te whenua takutai mō te pāmū.

I whakaawatia hoki ngā repo me ngā kūkūwai, ahakoa te mahi kōhi moni i āwangawanga tonu te mana whenua mō te parahanga i Ōhau hōpua me te kounga kino. I kī mai ngā kaumātua, mō te ngaromanga atu o ngā momo ika, ā, i horokukū ngā tohunga ki te whakamahi wai nā te parahanga.

Nā ngā iwi/hapū tētahi rangahau i arataki hei aromatawai i ngā rautaki urutau mō te pāmū me ngā poraka whenua Māori e toru, ā, nā te āhuarangi e hurihuri ana ēnei take i uaua ake ai. Mō te rangahau whakapūaho o Tahamata, i tohutohu mai ngā kairangahau kia waihangatia anō ngā kōreporepo me ngā kūkūwai i ngā whenua i ngā tahataha o te awa o Ōhau.



*Ko te kōpua o Kuku Ōhau me te wāhi koromeke
e tohungia ki te kārikiuri, ko ngā kōreporepo
hou kua tohungia ki te māki rō wāhi whānui e
tohungia ki te kārīkītea ngā wāhi hei tiaki, hei
whakapai i ngā pānga o te hurihanga āhuarangi,
tae atu ki ngā tūtohu whenua taketake.*

17

*Kei te tūhuratia e te Poari
ngā whakamahinga
auaha, pēnei i te
whakatipu harakeke mō
te muka, me ngā kaupapa
atu anō e meatia waitae
ana mai i te taiao.*

Ngā Pūnaha Hāroto

I angitu te te pūnaha hāroto o roto o Waikato me te aha i hiahia te poari ki te whai i tēnei mahi, kia whai hoki i ngā tukanga Mātauranga Māori i whāia ai mai i te tau 2002. I hoahoa tahi ngā pūnaha hāroto o Kuku i whakawhanake tahi hoki me tētahi pūkenga waimāori, he kaihangā āhuarangi, he kaihoahoa Māori, me ngā kairangahau Māori i tautokona ai e te Pōari Pāmu Māori, ngā kaikohi kai, me ngā Kaiwhaipānga Māori.

Waihangā Kōreporepo

He māmā noa iho te waihangā hāroto kōreporepo, he iti hoki te utu. Ko ngā hāroto nui, ngā hāroto pāpaku e whai otaota ana ka tātari wai ua, ka pōturi wairere hei whakahaere waipuke. Nā ngā hanga taiao nei ka noho hei kāinga hei whakaruruhau hoki mō ngā momo kararehe pērā i te kōreporepo māori. He wāhi rongonui anō hoki te takiwā whānui mō te rei (nā te hōhonu o ngā wāhi reporepo i mua tonu i te whakatahenga wai); ko ngā hanga rei nei i ngā hanga kōreporepo ka noho hei mimiti waro.

Ko tā te kaupapa Kuku whenua takutai he whakamātautau i ngā otinga whai kiko ki te manahau āhuarangi, mā te whai rangahau e pā ana ki ngā pūnaha hāroto kōreporepo me te mauritau. Mā te

whakatō kākaho, te whakatō pātītī, te tākahikahi ka tautokona te taiao mō te paratau inanga, ki reira kaha tipu ake ai ka kite ai te inanga i whakaata ana i tōna mana hei taonga, hei kai mā te mana whenua.

Ki Anamatā

Kia haumanu te whenua ki tōna orokohanga ka whakatō ngā tūaoa ā-whānau i ngā tipu māori pērā i te harakeke, te mātuka hoki i ngā parenga o te awa o Ōhau me te kōrerorero mō te mahi ki tua. Kei te tūhura te Pōari ki ngā whakamahinga whenua auaha, pērā ki te harakeke hei muka, me ēathi kaupapa whakamahi waitae o te taiao. Ka haere tonu ngā mahi kūtētē kau i runga ngā whenua haumako.

Te Tuari Mātauranga

Ko tētahi whāinga matua mō te kaupapa hanga kōreporepo nei ko te whakanui i te mātauranga rangahau mō ngā otinga ā-taiao ki hurihanga āhuarangi. Ka tauktoko ēnei otinga i ngā kaiahuwhenua ā-hapū o ngā pāmu takutai ki te whakawhiti atu ki ngā mahi whenua auaha i te aroaro o te āhuarangi e hurihuri ana. Ka tuaritia ngā hua mai i te whakamātautau nei ki ētahi atu iwi, hapū, kaunihera me ngā tāngata whai pānga.



TE WHAKAMAHERE TAKUTAI MŌANA Ā-HĀPORI

Te Kaunihera-a-rohe o Whanganui

18

KO NGĀ TINO WERO:

Ko te ngāhorohoro

Te nekeneke kirikiri

Te hekenga oranga taiao
o tātahi nā te whakamahi
whenua a te tangata.

*Mā te mahere e ārahina
ana e te hapori te ākau
mai i Castlecliff ki Kai
Iwi e manahau ai ki te
aroaro o te hurihanga
āhuarangi.*

500 TĀNGATA NEKE ATU

I urupare atu ki tā Te Kaunihera
ā-Rohe o Whanganui tirohanga
whānui mō tā rātou e aroha ai
ki tā rātou ākau.

I ahu mai ngā urupare i ...

NGĀ MOKA KATOĀ

o Whanganui, ā, ko ā rātou kupu
kōrero e whakaata mai i te nui
whakaharahara o te takutai mō
te hauora me te oranga
o te hapori katoa.



*'Ko te mātaki atu i
te tōnga o te rā, ko te
kohikohi rauemi pērā i
te tāwhaowhao, harakeke,
kūkū, me te hanga
whare kirikiri.'*



*'He mea whakaora,
whakaohoho wairua
te takutai moana.'*



*'Mō te Māori, ko te
hononga ki te taiao
kei te whakapapa.'*



Te Kaunihera-a-rohe o Whanganui

*Kei ia takiwā o te
takutai moana ōna
ake āhuatanga, me
te aha, he tukanga
whakahaere tō tēnā
me tō tēnā.*

Castlecliff

Nā te āta puhinga kirikiri mai te ahunga mai o te pūnaha taipū pāhekeheke. I kōrero hoki te hapori mō te raruraru pērā i te rāpihi, ngā motokā i runga i te onepū me ngā kurī.

Kia whakawhanakehia he mahere whakahaere e mahi tahi ana te Kaunihera ā-Rohe o Whanganui me Te Mata Pūau kia nohote hapū i te pūtahi o ngā mahi whakamahere katoa, mā te whakamahi i tētahi anga, i a He Ara Tuku Rau. Ka ahu te mahere ki tua o te tiaki whare me te aro atu kia whakapai ake i te oranga ā-pāpori, ā-ahurea ā-taiao hoki.

Kai Iwi

Kei te aroaro o Kai Iwi ngā tino wero mai i te nekeneke o te ākau me te ngāhorohoro, inā hoki ka tere haere nā hurihanga āhuarangi. E ai ki ngā urupare i puta he āwangawanga mō te kounga o te wai i te manga. E mahi ngātahi ana te kaunihera me te hapori, te hapū a Tamareheroto, me ngā tohunga taiao kia whakaarohia ngā tono mā Kai Iwi, mā te whakamahi pūrongo tawhito, me ngā kaupapa a ngā tāngata o te hapori.

Ko ngā kaupapa pēnei i te whakahaere kōkirikiri (hanga pūkawakawa), te whakahaere ā-tau, te whakatū maioro, ngā maioro hou e tūkaha ana, ngā kōwhiringa katoa rānei. Nā ngā urupare o te tirohanga whānui ka tīpakohia ngā hiahia o te hapori kia huhua te kaimoana ora, kia pūmau te whakahaere ākau, kia kaha ngā taipū me te ngahere ā-takutai.

Ko ngā mahi ināianei mō te mahere takutai ko te whakarite hui i waenga i te kaunihera me ngā tino rōpū o te hapori, te mahere whenua ā-hapori, ngā tohutohu mō te pūkaha me te taiao, te whakatau utu mō ngā kōwhiringa whakahaere.

Ka para huarahi te mahere kia mahi ngātahi te hapori hei whakapiki oranga me te manahau o ngā tāngata me te taiao ki ngā tau 50, 100 kei mua. Ka noho hei 'tauākī ora' kia auau te arotakenga me te whakahou i te āhua o ngā raraunga pūtaiao, ngā wawata o te hapori, me te whai wāhi ki te pūtea. Hei tauira, kei te mātaihia a South Beach kia uru mai ki te mahere whaimuri i ngā whakahokinga kōrero a te hapori.



TE WHAKATAIRANGA WAKA KAWE TĀNGATA

Tranzit Coachlines, Te Papaioea

20 *E 20 ōrau o ngā haurehu kati mahana katoa o Aotearoa ka puta mai i ngā waka – ko ngā kora mātātoka pērā i te penehīni me te hinumata ka puta ngā tuku kikino e kaha ake ai te hurihanga āhuarangi.*

Te whakaiti whakamahinga motokā

Hei akiaki i te tangata kia puta i ō rātou motokā kua whakaritea e Te Kaunihera ā-Rohe me Te Kunenga ki Pūrehuroa he haerenga utukore mā ngā taurira me ngā kaimahi i ngā ratonga katoa o Te Papaioea mā tētahi Kaupapa Mutunga Kore (UAS). Nā Waka Kotahi rātōu ko Te Kunenga ki Pūrehuroa ko te Kaunihera ā-rohe te pūtea tautoko.

Tōna 600,000 piki ake ngā haerenga ā-tau UAS utukore, e āhua haurua o ngā haerenga pahi katoa i te rohe

I tīmata te kaupapa UAS hei kaupapa iti me UCOL i te tau 2004. I te tau 2005, i whakawhānui atu hei rongōā i te popoke i ngā tūnga waka i Te Kunenga ki Pūrehuroa, me te whakangāwari i te popoke waka i te tāone. I te hiahia hoki ngā kaunihera me Waka Kotahi kia iti iho te hanganga rori mā te akiaki i ngā tāngata ki te neke ki ngā waka tūmatanui.

I te tīmatanga nā Te Kunenga ki Pūrehuroa te pūtea tautoko me te whakarite utu hei whakatū waka ki tōna papa ako i utu ai te kaupapa. Nā te tino angitu o te whakamātautau, ka whakanui atu kia tūhono ki Te Kunenga ki Pūrehuroa mai i te pokapū me ngā moka o Te Papaioea.

NĀ TE UAS KUA TANGOHIA TE 173 MOTOKĀ MAI TE RORI, Ā, AHAKOA TE HEKE O TE WHAKAMAHI PAHI I TE WĀ O KŌWHEORI-19, KA MUTU, E ĀHUA 70 TANA O TUKUWARO I PENAPENA Ā-TAU.

Ngā mahere whakawhānui

Ina tata nei kua uru mai tokorua atu anō o ngā Kaiwhakarato mātauranga: te Kāreti Whakaako Reo Ingarihi me IPU Aotearoa.

Kei te akiaki Te Kaunihera ā-rohe Horizons i ētahi atu rōpū kia takoha mai te haerenga utukore i ngā ratonga ā-kaunihera. Kei te whakatairanga ake te Mahere Waka Tūmatanui a Horizons (2022–2032) i te haerenga utukore hei āwhina i ngā rōpū e tautoko ana i te whakamahi momo waka toitū.

Ko te whāinga o ngā mahere a Horizons, kia 30 ōrau te whakaiti tukuwaro ā-rohe i ngā waka whenua hei te tau 2030, tae atu ki tētahi tāruru waka tūmatanui tuku iti.

Kei te tautoko ngā kaupapa here a te kaunihera i te Mahere Whakaiti Tukunga a te Kāwanatanga e aro atu ana kia whakaiti tukunga i ngā waka, mā te whakapai ake i ngā waka tūmatanui, te hīkoi me te eke paihikara rānei. Tāpiri atu ki te whakaiti tukunga ka tautoko te 'neke momo' i te whai wāhi ki ngā whare iti te utu me te whakapai ake i te noho ki ō tātou nei tāone.

He kōrero atu anō kei

[Horizons Regional Public Transport Plan Information on mode shift](#)

AHUWHENUA AUAHA - Ō STEWART WHENUA KAU



Whakatōnga tarawāhi - Stewart Dairylands

*'Toitū te whenua,
whatungarongaro te
tangata. Ehara nō mātōu
te whenua, nō mātou te
hōnore hei manaaki hei tiaki.
Nō tātou te wā ināianeī'*

David A Stewart.

21

Ki tua o te tūtohu

Neke atu i te 120 tau te whānau Stewart e mahi ahuwenua ana i Manawatū. Ko tā rātou he whakaputa hua ā-miraka tino kounga māi i ngā kararehe ora, kararehe rangatira mā te āta tiaki i a rātou nei kararehe me te taiao.

Mō te tīma a Stewart Whenua Kau Dairylands, kia rere ki tua o te tūtohu kia tū hei pakihī waro kore. Ka kapia katoatia te pāmu ki tētahi mahere taiao, ā, he auau ngā rā tuwhera, he whanaungatanga ki ngā rōpū tiaki taiao me ngā iwi hoki.

Te Whakaiti tukuwaro

Kua whakaritea e Stewart Whenua Kau ngā papa hiko kōmaru i runga i te tuanui o ngā whare miraka kau hei whakakapi i te pūnaha whakawera wai ā-hau. Nā te whakauru papa hiko kōmaru kua heke iho te whakamahi ki te 30 ōrau. E tū pātata ana a Stewart Dairylands ki te teihana hiko o Bunnythorpe, ā, he pito mata kia tū te pāmu hei pāmu kōmaru me te whakatipu hipi i te taha o ngā papa hiko kōmaru.

Te hanga pūnaha hauropi

Kei te āta rapu te rōpū nei i ngā whai wāhitanga kia mahia ngā whenua hūnua pērā i ngā āpiti i ngā tau tekau ka hori, kua whakatōkia e 10,000 rākau i runga i ngā whenua hūnua o te pāmu. Kei te aro atu te rōpū me pēhea te whakatō rākau ai kia iti ai te tapuwae waro - hāunga anō te whakatō rākau e kounga ai te wai me te whakamarumarū.

Ko te whāinga hoki ko te hanga me te tiaki i ngā pūnaha hauropi mā te whakatō rākau māori i ngā whenua tuapapa e waihanga kōreporepo, wāhi pupuri waipara, ngā papanga taiora, me te waihanga pūkaha auaha hei kapokapo wai.

Ka meatia ngā Rangi Pāmu hei whakaatu i ēnei tukanga auaha ki ngā nohotata me ētahi atu kaipāmu nāna te rōpū Stoney Creek Catchment Collective i whakatū i tōna 2400 heketea. E kaha ana te rōpū riu nei ki te mahi i runga i ō rātou whenua kia pai ai te kounga o te wai i te riu o Stoney Creek.



TE WHAKAMANA I TE MANA WHENUA

Te Teihana o Paetawa

22

KO TE WHĀINGA, KIA HAUMANU TE WHENUA HEI WHAKATŪ I TĒTAHI PAKIHI AHUWHENUA MĀORI ME TŌNA TAPUWAE WARO KORE.

Te Urumingi Whānau Trust

Koia nei ngā uri a Te Ratana Te Urumingi rāua ko Heeni Piirato, e wawata nui ana mō tō rātou whenua.

Ko tō rātou pāmu ko Paetawa 1214 heketea kei ngā pukepuke torehape o te awa o Whānganui, e 80 heketea noa iho te whenua e pai ana mō te mahi ahuhenua. E whakahaeretia ana te teihana e Te Urumingi Whānau Trust mā tōna kamupene turuki mā Heeni.

He wero ki a Heeni Investment tae atu ki ngā mahi mapu rongoā kaha rawa o mua, ngā pātiki iti, ngā tarutaru, me ngā whenua huakore.

Ngā mahi kua oti:

Kua hoahoa te tīma i tētahi tukanga koiora tiaki pūtea iti te utu hei rongoā i te oneone - mā te whakapiki oranga moroiti me te whāngai i ngā moroiti ki tētahi kai rimurimu me ngā hua ika.

Nā tēnei kua piki ake ai ngā hua, kua whakahaeretia ngā tarutaru me te korengā e whakamahi wairākau horihori. Kua pai ake te oranga o ngā kararehe, ka mutu, kua piki te utu me te heke iho o te mahi kōpiro.

**MĀ TE TOHUTOHU A
NGĀ MĀTANGA KUA
WHAKARITEA E HEENI
INVESTMENT TĒTAHI
MAHERE PĀMU WHĀTAHI,
E HĀNGAI ANA KI TĀ
TE MĀORI TITIRO
KI TE TAIAO.**

E WHĀ NGĀ MĀTĀPONO WHAKAHAERE O TE PAKIHI NEI:

Taiao

Whakarauora ake i tō mātou pūtake rawa (kounga o te wai me te oneone; te whenua ngāhorohoro; ara wai; kanorau koiora).

Mātauranga

Ahurea: Hāpai mahinga kai; kaitiakitanga, whakairo, manaakitanga, whakawhanaungatanga.

Te waihanga whai wāhitanga mā tētahi whare whakatipu otaota e hoki mai ai ngā uri ki te ako me te mahi.

Ōhanga

Te waihanga huarahi mahi kanorau, toitū i ōhanga mā te whakawhānui, te pūmau me te whakakanorau i te ngāhere i runga i tō mātou whenua.

Kīnakitanga

Hautūtanga: kia whakaritea mai he pakihi ahuwheua Māori tapuwae waro kore hei whakatauirā mai iti whirinaki atu o ngā whakahaumako horihori kia whakaiti iho i ngā tukunga koiora ā-pāmu me te rere o ngā taiora ki ngā arawai.

I tēnei wā ko ngā mahi a Heeni Investments.

E 400 HEKETEĀ KUA WHAKATŌKIA KI NGĀ RĀKAU MĀORI ME TE MĀNUKA

Kua rite mai ngā papa awa o te teihana hei whakatū taiapa hei whakatō.

HE 420 HEKETEĀ ANŌ O NGĀ RĀKAU MĀORI

pērā i te mānuka, karamu, tī kōuka me te tōtara.

TE WHAKARITE RORE WAI PARA

Hei hopu waipara, hei tiaki ara wai.

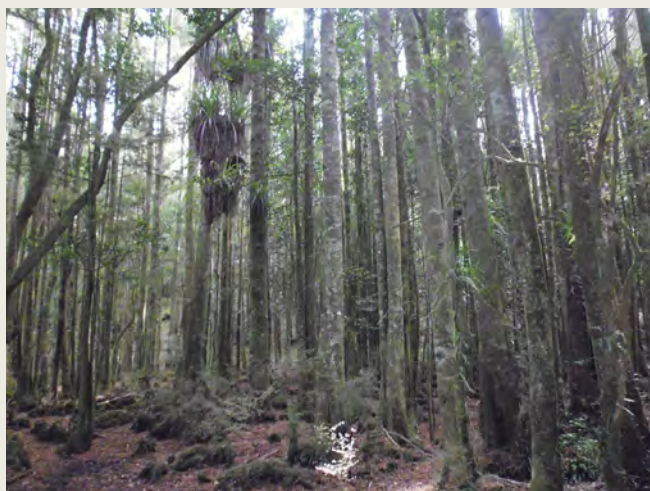
TE ĀWHINA WHAKAITI TUKUWARO

Kei te neke atu a Heeni Investment i te mahi whakatipu kau ki te mahi whakamōmona kararehe, ā, kei te tūhuratia he pāmu waro, wai parareka me ngā pūmua rerekē.

'E mōhio ana mātou ki te āhua o ngā tau 40 kua hori me te kōingo kia hoki mai tōna rangatiratanga. E ora tonu ana ō mātou kaumātua e mōhio ana ki tēnei āhuatanga. Me whakarite tētahi āhuatanga mō ngā uri whakaheke, inā hoki, kei te hīkoi whakamua mātou.'

Ben Pōtaka, Heeni Investment Co Ltd.

23



Ko ngā repo kahikatea, he wāhi pai mō ngā ika taketake tae atu ki ngā tuna kūao he wāhi paru hei whakakano harakeke mō te puipui, te kete, me te whāriki hoki.

