

SHOW RESPECT FOR SEASHORE CREATURES



- ☆ Tread carefully.
- ☆ Leave creatures where you found them.
- ☆ Leave attached seaweed in place.
- ☆ Handle creatures with care - close to the ground with wet hands.
- ☆ Carefully put sediment and rocks back to the same location you found them.
- ☆ Limit your collection of empty shells as other creatures may use them as homes.

AVOID DISTURBING WILDLIFE



- 📷 Keep your distance from seabirds including penguins.
- 📷 Keep your distance from seals and sea lions.
- 📷 Use the zoom on your camera or binoculars for close viewing.
- 📷 If sea lions approach you - back away slowly.
- 📷 Keep dogs under control.
- 📷 Pick up any rubbish found.

BE CAREFUL AND KEEP SAFE



- ⚠️ Check tide times to avoid being cut off by rising tide.
- ⚠️ Do not explore the seashore alone.
- ⚠️ Watch for changing weather.
- ⚠️ Look out for waves - never turn your back to the ocean.
- ⚠️ Soft mud can be dangerous. If you start to sink turn back.
- ⚠️ Check signs for any local hazards.

The NZ Marine Studies Centre (Dunedin) provides expert knowledge, research opportunities, educational programmes and resources for schools about New Zealand's marine environment.

Acknowledgements

The Sandy and Muddy Shore Guide, produced by the NZ Marine Studies Centre, Department of Marine Science, University of Otago, is proudly supported and funded by Mobil Oil New Zealand Limited.
 Photographer D. Pagé. Illustrator Graeme Furness.
 Additional photos R. Taylor, M. Francis, F. Keil, S. Mills, C. Brett, P. Batson, T. Bird and A. O'Neill.

© NZ Marine Studies Centre 2016. All Rights Reserved.

Every effort has been made to ensure the accuracy of this guide at the time of publication.



ISBN: 978-0-473-27597-6

www.marine.ac.nz

Northern NZ

SANDY & MUDDY SHORE GUIDE

Creative 7425N 2/16



A handy guide to the common animals and plants living on the sandy and muddy seashores of northern New Zealand.



NEW ZEALAND
MARINE STUDIES CENTRE
 UNIVERSITY OF OTAGO

Mobil™

An ExxonMobil Brand

This guide illustrates only some of the more common seashore animals and plants. Visit our website for a comprehensive list, Māori names and information about their ecology.

ANEMONES



Burrowing Anemone
Edwardsia neozelanica
20 mm

Mudflat Anemone
Anthopleura aureoradiata
20 mm

BARNACLES



Attached to cockle shells



Estuarine Barnacle
Austrominius modestus
5 mm

BIVALVES



Nut Shell
Linucula hartvigiana
8 mm



Morning Star Shell
Towera spissa
25 mm



Small Dog Cockle
Glycymeris modesta
30 mm



Cockle / Little-neck Clam
Austrovenus stutchburyi
50 mm



Ribbed Venus Clam
Leukoma crassicosta
45 mm



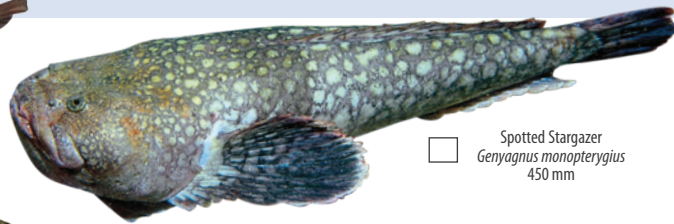
Oblong Venus Clam
Venerupis largillierti
60 mm



Venus Clam
Dosinia subrosea
60 mm



Estuarine Triplefin
Forsterygion nigripenne
90 mm



Spotted Stargazer
Genyagnus monopterygius
450 mm



Sand Flounder
Rhombosolea plebeia
430 mm



Sole
Peltorhampus spp.
350 mm



Wafer Clam
Hiatula siliquens
50 mm



Pipi
Paphies australis
60 mm



Sunset Shell
Gari convexa
60 mm



Triangular Trough Clam
Crassula aequalatera
70 mm



Surf Clam
Spisula murchisoni
90 mm



Northern Tuatua
Paphies subtriangulata
50 mm

CRABS



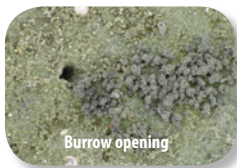
Burrow opening



Stalk-eyed Mud Crab
Macrophthalmus hirtipes
35 mm



Paddle Crab
Ovalipes catharus
150 mm



Burrow opening



Tunnelling Mud Crab
Austrohelice crassa
20 mm



Hairy-handed Crab
Hemigrapsus crenulatus
40 mm



Estuarine Pillbox Crab
Halicarcinus whitei
10 mm



Feeding mark



Wedge Shell
Macomona liliana
55 mm



Pacific Oyster
Crassostrea gigas
120 mm



SHRIMPS & HOPPERS



Burrows

Burrowing Amphipod
Paracorophium excavatum
3 mm



Sandhopper
Bellorchestia quoyana
14 mm



Isopod
Scyphax ornatus
10 mm



Snapping Shrimp
Alpheus richardsoni
65 mm



Burrow entrance and exit

Ghost Shrimp
Biffarius filholi
60 mm



Burrow opening

Mantis Shrimp
Heterosquilla tricarinata
75 mm



Male

Female



Sand Shrimp
Philoceras australis
40 mm



WORMS

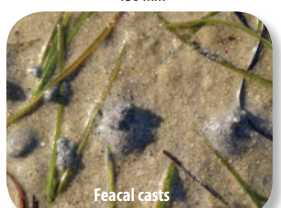
Spaghetti Worm
Family Terebellidae
40 mm



Ribbon Worm
Phylum Nemertea
200 mm



Bamboo Worm
Family Maldanidae
130 mm



Feecal casts



Oweniid Worm
Family Oweniidae
45 mm



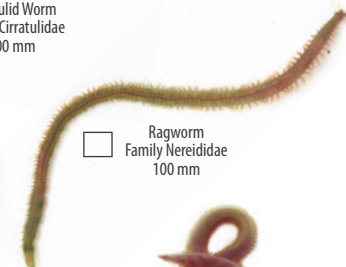
Cirratulid Worm
Family Cirratulidae
100 mm



Catworm
Family Nephtyidae
100 mm



Ragworm
Family Nereididae
100 mm



Blood Worm
Family Glyceridae
130 mm



Polychaete Worm
Family Orbinidae
100 mm



Cockle Shell Worm
Boccardia sp.
20 mm



Feecal casts

Lugworm
Abarenicola affinis
100 mm



SNAILS & LIMPETS



Topshell
Cantharidus huttonii
12 mm



Large Horn Snail
Zeacumantus lutulentus
25 mm



Wheel Snail
Zethalia zelandica
22 mm



Auger Snail
Euterebra tristis
24 mm



Ostrich Foot Snail
Struthiolaria papulosa
60 mm



Mudflat Whelk
Cominella glandiformis
25 mm



Small Turret
Stiracolpus pagoda
30 mm



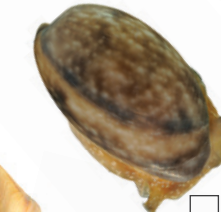
Turret Shell
Maoricolpus roseus
80 mm



Horn Snail
Zeacumantus subcarinatus
15 mm



Mud Snail
Amphibola crenata
30 mm



Olive Bubble Shell
Bulla quoyii
55 mm



Ostrich Foot Whelk
Pellicaria vermis
40 mm



Speckled Whelk
Cominella adspersa
45 mm



Wentletrap
Cirsotrema zelebori
22 mm



White Bubble Shell
Haminoea zelandiae
20 mm



Necklace Snail
Tanea zelandica
33 mm



Australian Dog Whelk
Nassarius burchardi
12 mm



Mudflat Topshell
Diloma subrostrata
30 mm



Arabic Volute
Alcithoe arabica
100 mm



Southern Olive Snail
Amalda australis
30 mm Long



Estuarine Limpet
Notoacmea spp.
11 mm

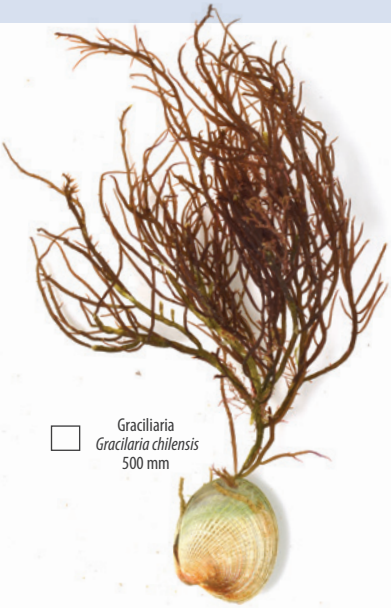


Topshell
Cantharidus huttonii
12 mm



SEAWEED & DIATOMS

PLANTS



Gracilaria
Gracilaria chilensis
500 mm



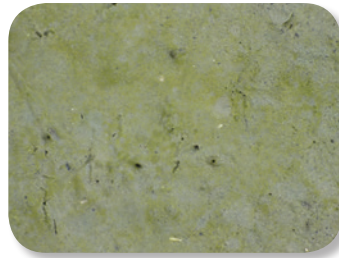
Sea Lettuce
Ulva spp.
300 mm



Filamentous Red
Polysiphonia spp.
150 mm



Spume (Diatom matter)



Benthic Diatom
(green scum)



Eelgrass
Zostera muelleri
300 mm



Glasswort
Sarcocornia quinqueflora
150 mm



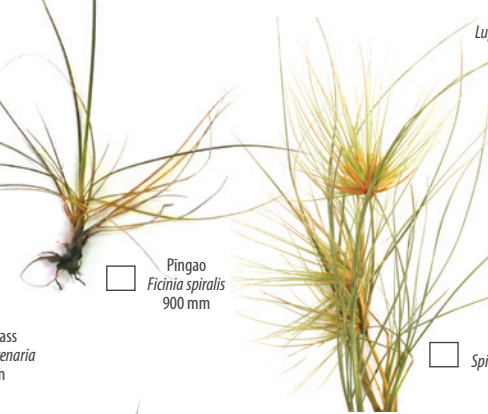
Shore Spurge
Euphorbia glauca
500 mm



Tree Lupin
Lupinus arboreus
1500 mm



Marram Grass
Ammophila arenaria
1200 mm



Pingao
Ficinia spiralis
900 mm



Spinifex
Spinifex sericeus
300 mm

DRIFT

SEA URCHINS



Ram's Horn Squid Shell
Spirula spirula
30 mm



Violet Snail
Janthina sp.
45 mm



Blue Bottle Jellyfish
Physalia physalia
150 mm



Sand Dollar
Fellaster zelandiae
100 mm



Heart Urchin
Echinocardium cordatum
90 mm



Knobbly Clubrush
Ficinia nodosa
1500 mm



Sea Rush
Juncus kraussii var. *australiensis*
1200 mm



Jointed Wire Rush
Apodasmia similis
1500 mm



Mangrove
Avicennia marina australasica
2000 mm