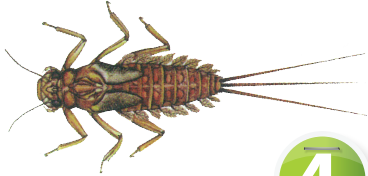
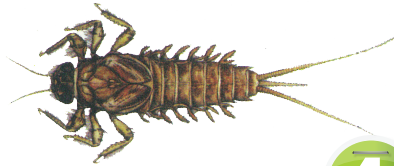


Koiora Mangawai

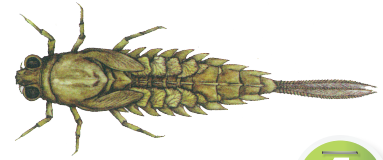
Ngā piriwai



4

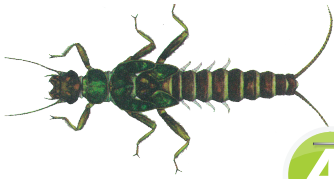


4

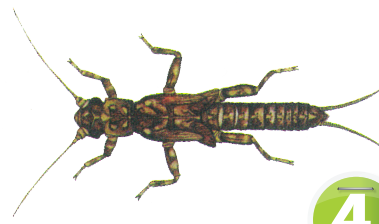


4

Rangotoku kaitā

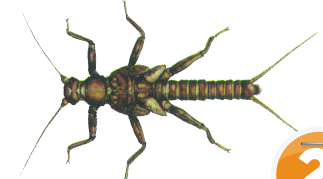


4



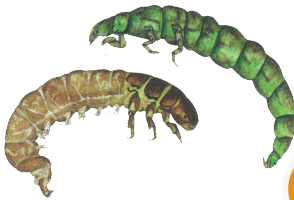
4

Rangotoku puku



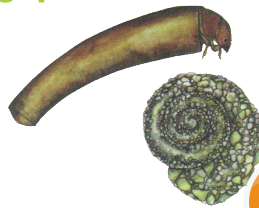
2

Rangopūkore



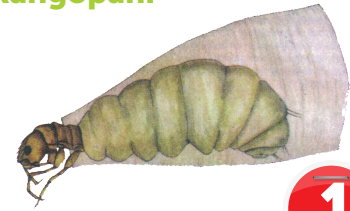
3

Rongopū



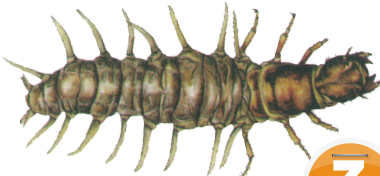
3

Rangopāhi



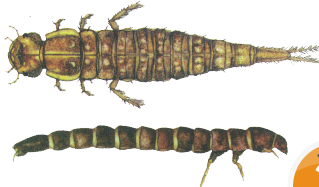
1

Rangopūkore



3

Ngā tātaka



2

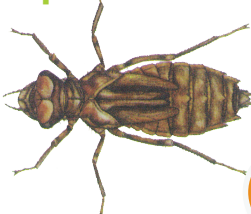
Kēkēwai (Kikorangi)



2

Kihitara (Whero)

Ngā kapowai



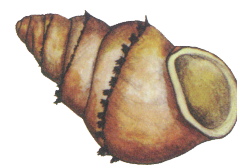
2

Ngā takarepo



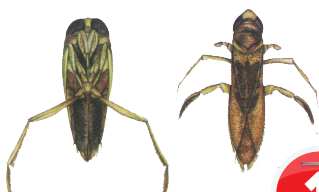
2

Ngā whētiko



1

Mūhoe



1

Ngā noke



1

Ngā rango



1

Takoha Tuakiri– Te Kimi Momo Rerekē

**Me āta titiro ki ngā pepeke o tō tipako kia kimihia ngā momo rerekē.
He maha o ngā pepeke ka kitea e koe he iti rawa i ērā
o ngā pikitia. Ka iti iho hoki i te kōanga.**

Ngā piriwai

E 3 ngā hiku o te torongū piriwai.
Kei te puku o te torongū piriwai ōna pihapiha.
Ina mau i a koe ka kowheta haere kia pai ake i te tuku hā!

Rangotoka

E 2 **Ngā hiku** o te torongū rangokōhatu.
Ka uaua te kite i ngā pihapiha.
Ka hāpai, ka heke te tinana e rere ai te wai i ngā pihapiha i te wai marino.

Ko **Ngā mea** kaitā e tipu kia 30mm, ā, he tohu tēnei i te tino kounga o te wai.
Stenoperla – he mea kākāriki.
Zealandoperla – he tino roa ngā pūhihi, he tino huruhuru ngā waewae, ā, he papatahi te tinana.

Ko **Ngā mea** paku e 6 – 10mm.
Acroperla sp. – he mea ira kōmā kei ngā waewae me te tinana, e poto iho ana ngā kaka o te hiku i ngā pūhihi,
Zealandobius – he kōmā te tinana, poto iho ngā kaka o te hiku i ngā pūhihi, he wekuweku i waenga i ngā kaka.

Rangopū

He waewae kei mua o te tinana.
Ko ngā mea haere noa he pīhuka kei te pito o te tinana.
E 3mm te Rangopāhi. He pūataata te pāhi.
Ka kitea pea e koe ngā momo rerekē. Neke atu i te 160 ngā momo rangorangopū.

Tātaka, Rango noa rānei?

He angiangi te tinana o ngā torongu me te iti o ngā wāhanga tinana’.

Mawhiti

Ehara i te pepeke he mawhiti kē, tatauria ngā waewae! E 3.5mm te rahi, nō te whānau kōura.

Whētiko

E 3 – 12mm

Illustrations by Karen Mason. Reproduced with kind permission.