



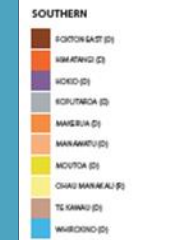
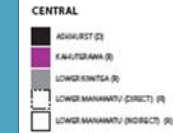
**2019-2020
RIVER MANAGEMENT ACTIVITY GROUP
POREWA FLOOD CONTROL SCHEME MEETING**

HORIZONS RIVER MANAGEMENT

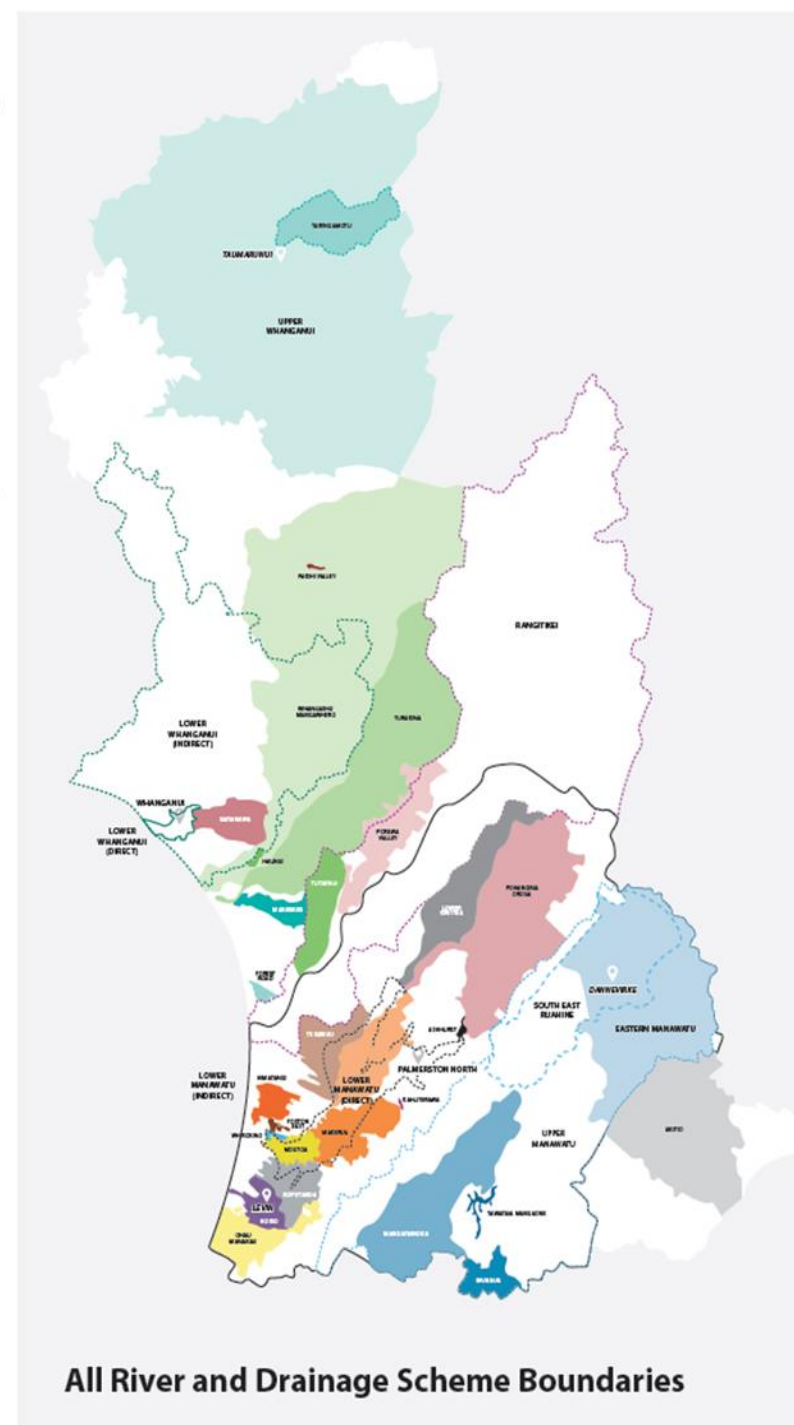
32 staff with a current operating budget of \$11M

34 River and drainage schemes

Providing protection/benefit to 10 urban areas and 75,000 hectares of rural land



(D) Drainage | (R) River



All River and Drainage Scheme Boundaries



1,270km of river channel



1,100km of drain



23 pump stations with a total discharge capacity of 43m³/s

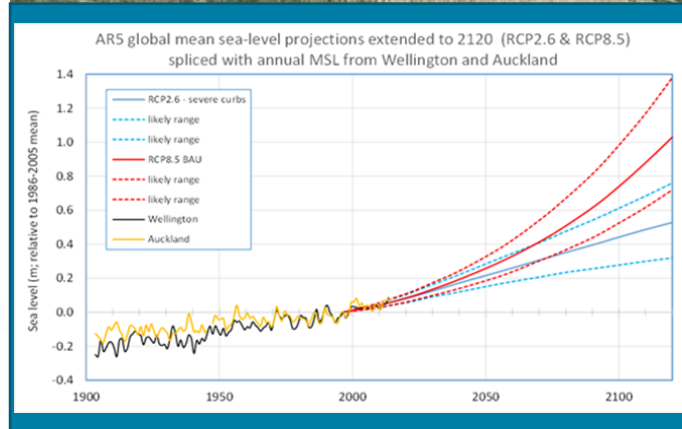


53 detention dams that store 4.3 million cubic metres of floodwater



500km of stopbanks





SIGNIFICANT RIVER MANAGEMENT ISSUES FOR THE REGION

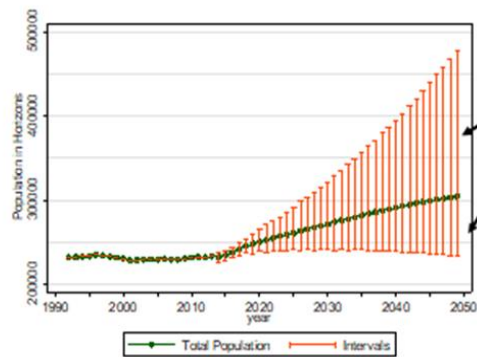
Operational reliability

Sediment build-up reducing flood protection standards

Urban growth

Climate change

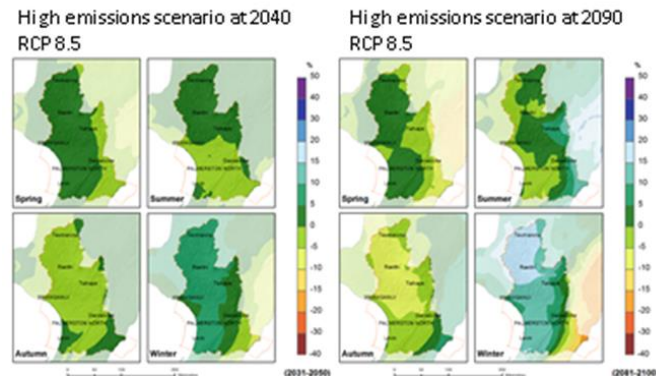
The population within the region is likely to grow to over 300,000 by 2050.



Shows likely upper and lower bounds

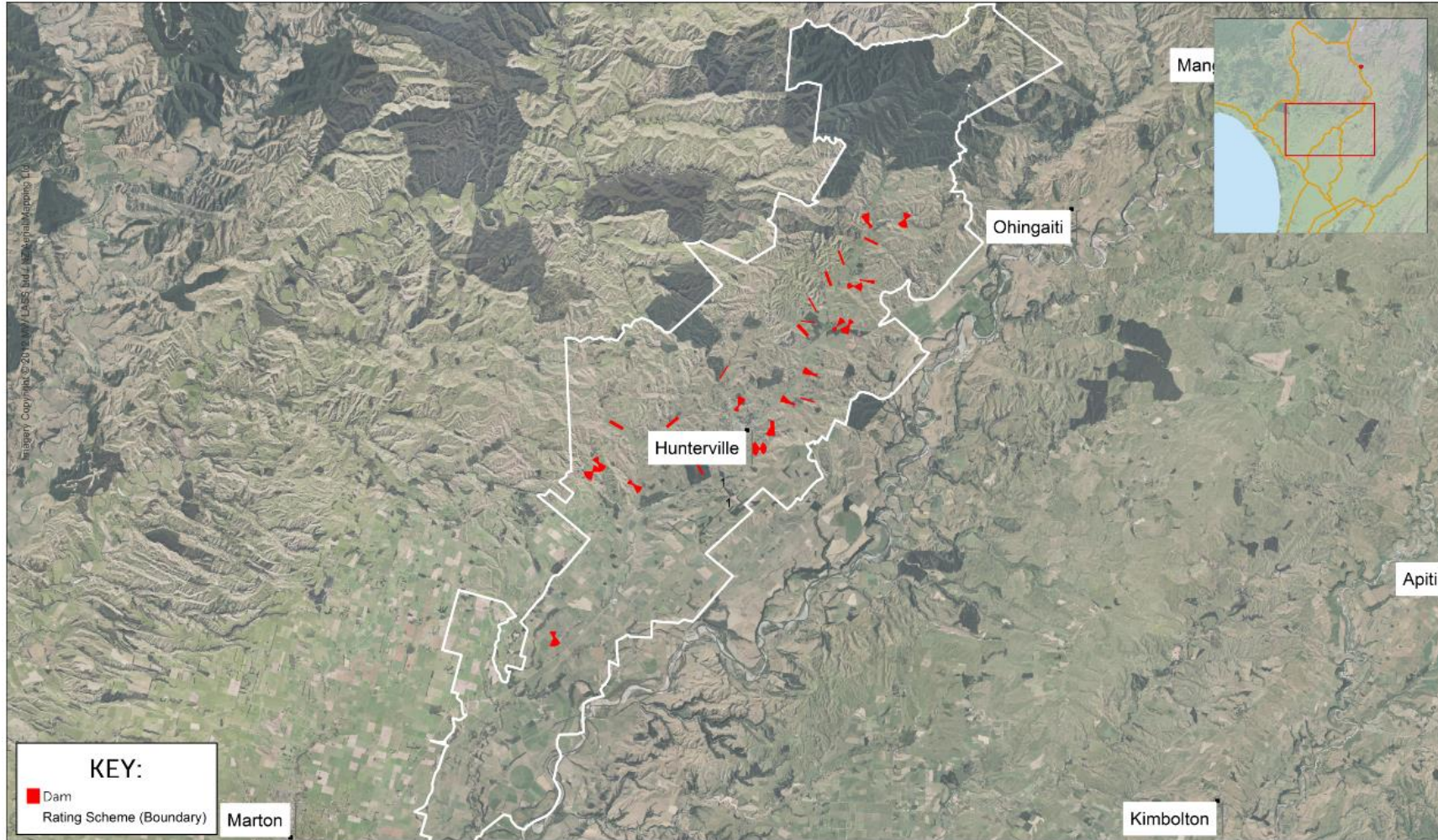
Annual growth for 1995-2015 was almost 0%
For 2015-2048 population projected to grow at an average of 0.9%

Horizons rainfall projections



horizons.govt.nz

Porewa Flood Control Scheme Assets



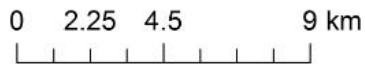
Scheme Facts

Scheme Assets.
27 Detention Dams

Total Asset Replacement Value:
\$7,668,036.40
(July 2019).

POREWA SCHEME

Asset Map 2020



A3 1:131,642

EXCLUSION OF LIABILITY ARISING FROM SUPPLY OF INFORMATION
Horizons Regional Council endeavours to provide useful and accurate information. Horizons Regional Council shall not, however be liable whether in contract, tort, equity or otherwise, for any loss or damage of any type (including consequential losses) arising directly or indirectly from the inaccuracy, inaccuracy or any other deficiency in information supplied irrespective of the cause. Use of information supplied is entirely at the risk of the recipient and shall be deemed to be acceptance of this liability exclusion.

Prepared by: River Management - Northern
Drawn by: Gerry Linklater
Date: March 2020
Contains Crown Copyright Data



horizons.govt.nz



POREWA SCHEME

Strategic Direction

The focus of the Scheme over the next 3 years is to continue to maintain existing infrastructure and to implement dam safety review findings.

Aim

To maintain a level of service that meets the expectation of the local community (township of Rata, Hunterville and approximately 800ha of rural land in the valley floor) for flood protection.

Scheme Level of Service

To ensure that the assets are managed in a consistent, efficient and sustainable manner.

To ensure the long-term performance of the assets and ensure cost-effective delivery of service to the standard agreed with the ratepayers.

To protect from flood events that do not exceed 4% Annual Exceedance Probability (AEP).

To manage gravel and general channel conditions within the various streams included in the Scheme in order to maintain desired channel alignment and minimise lateral erosion.



horizons.govt.nz

Scheme Funding

Funding Policy

The Schemes funding comes from three revenue sources:

Targeted Rates – differential targeted rates levied on properties directly benefiting from or causing the need for the work.

General Rates – uniformed rate levied over all properties in the Horizons Region.

Other income – Revenue from lease land, forestry blocks, scheme reserves, etc. held by the scheme. This is used to reduce the level of the targeted rate



Porewa Valley

Scheme Presentation Map

- A
- B
- C
- D
- E
- F
- G
- U1
- U2

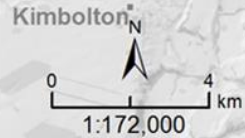
www.horizons.govt.nz

Marton

Hunterville

Ohingaiti

Mangaweka



Key Activities and Issues: 2019-20

Scheme Expenditure

Expenditure is on track to finish year within budget

Works Activity

Dam inspections, maintenance and repairs.

Vegetation clearance and spraying.

Removal of tree blockages – South of Hunterville and near dam 84.

Burn old slash piles (near Queens Park).

To Do

Burn further slash piles – adjacent to Queens Park and below Dam 75.

Photos

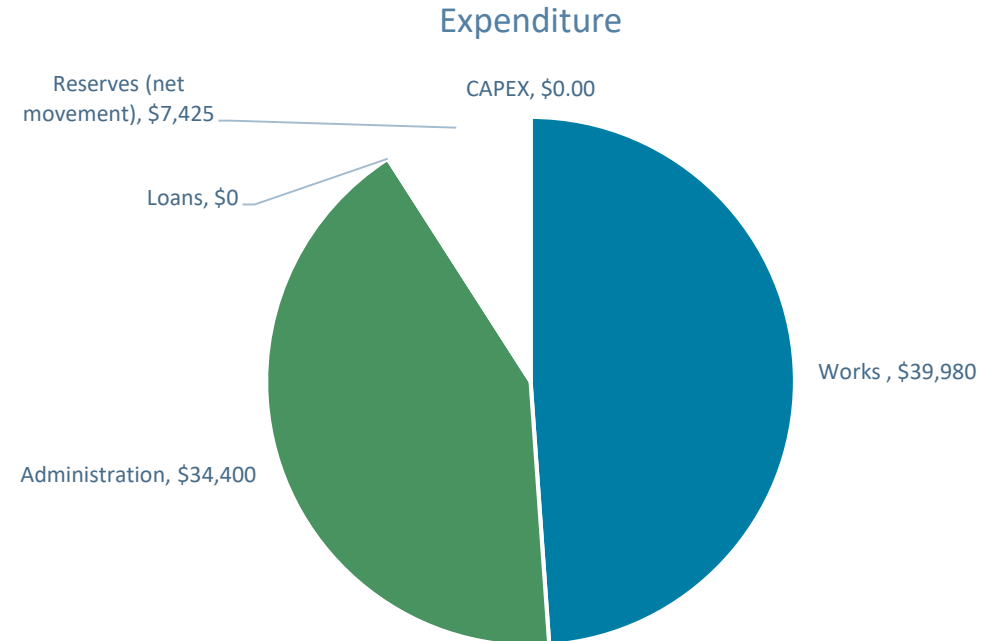
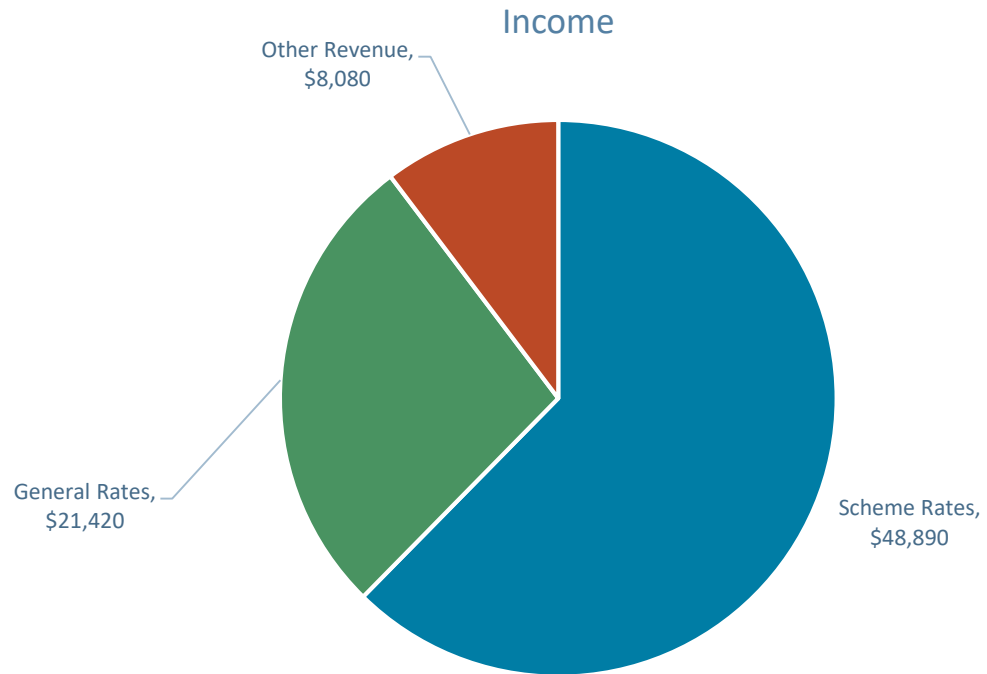


Tree blockage just south of Hunterville (since removed)



Slash pile burnt – north of Queens Park, Hunterville

Income and Expenditure 2019-20



Key Activities and Issues: 2020-21

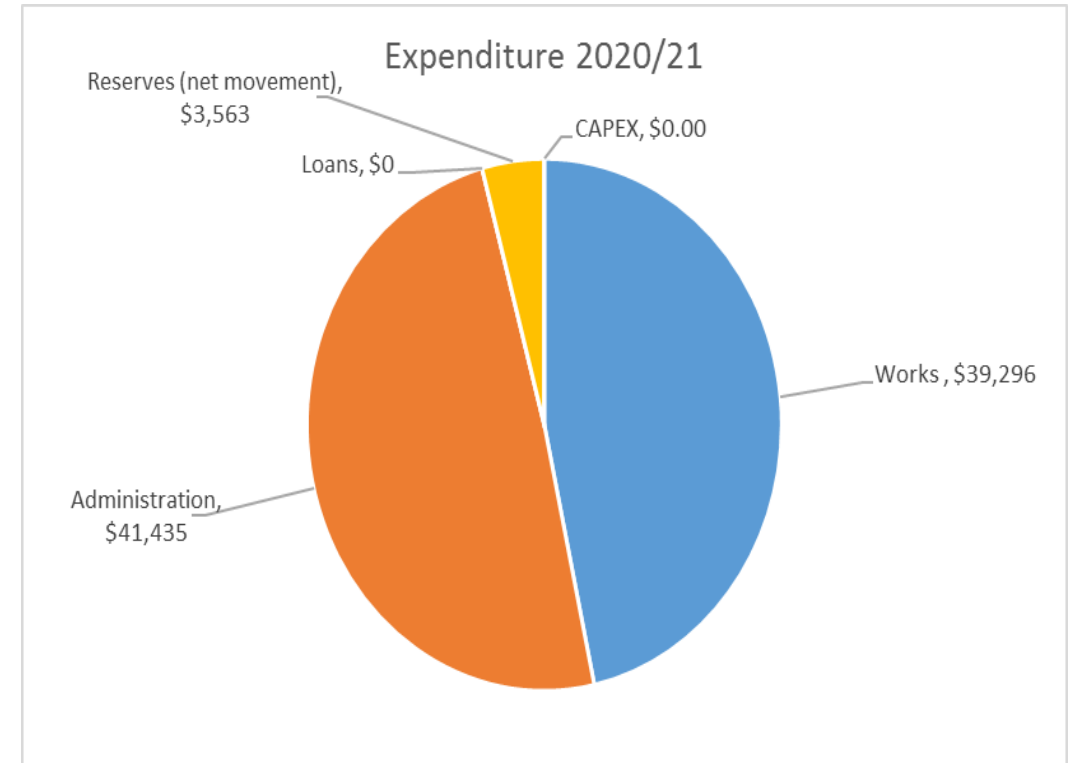
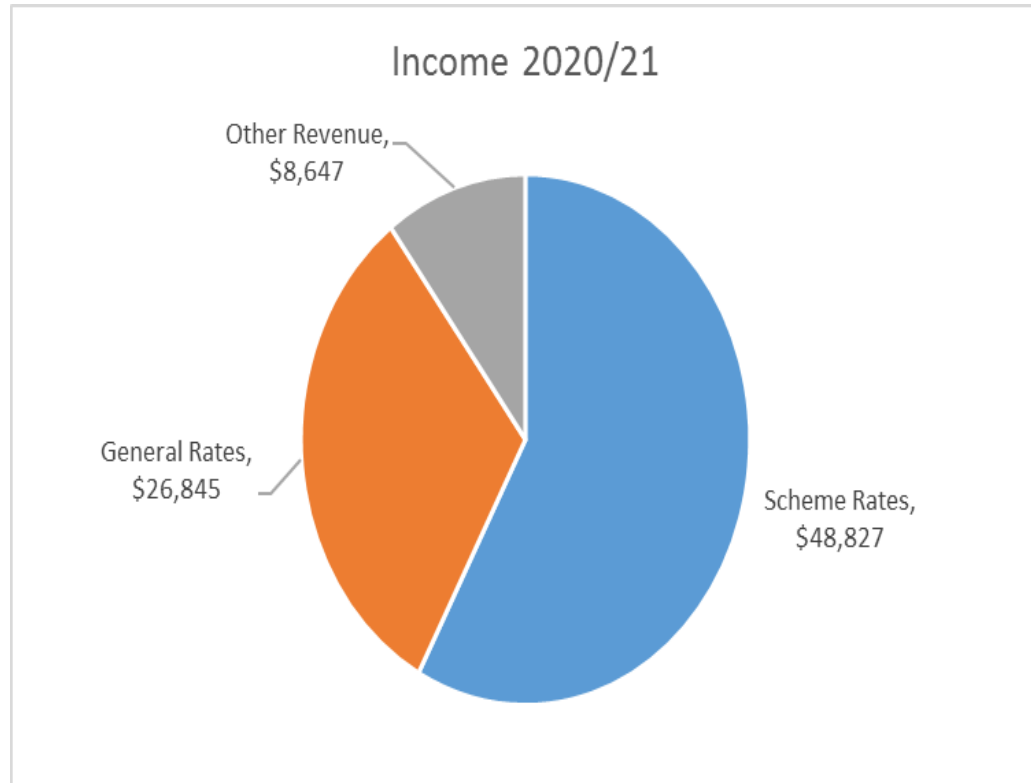
Scheme Budget

- \$11,200 increase in works expenditure funded \$5,400 from increase in general rate
- \$3,210 contribution to the Emergency Reserve Fund
- \$1,400 increase for insurance
- Increase in general rate contribution from 20% to 40% over 4 years

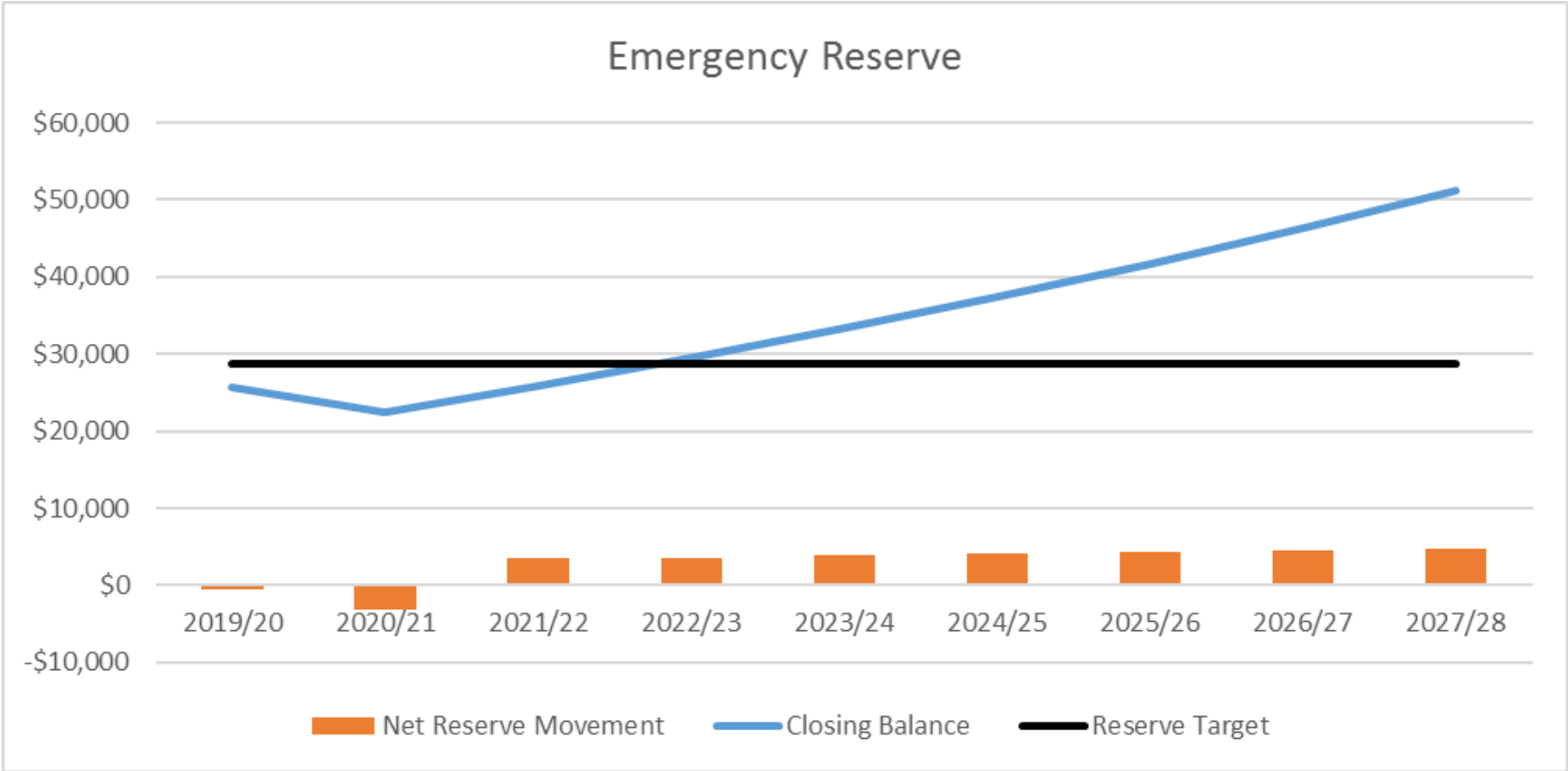
Works Activity

- Continue dam maintenance program.
- Implement dam safety initiatives for 27 dams.
- Higher maintenance regime through Hunterville township.
- Address stream blockages as they occur.

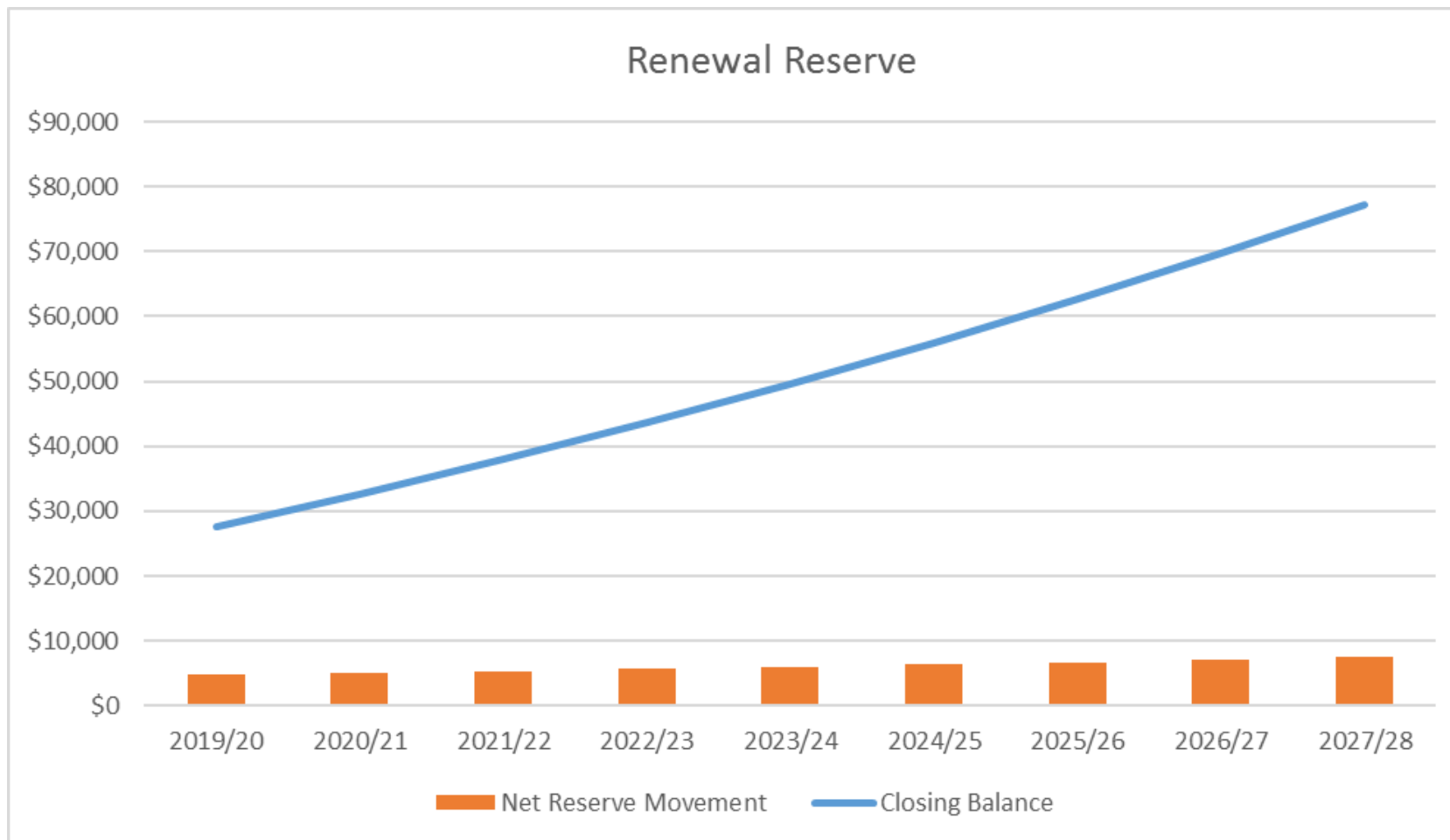
Income and Expenditure: 2020-21



Emergency Reserve Balance



Renewal Reserve Balance



Issues Arising

Porewa Scheme

Rate increase of 10% was thought to be too high and should be lowered to 5%

Discussions were to be held to investigate lowering the rate increase.



horizons.govt.nz

The End



horizons.govt.nz



horizons

REGIONAL COUNCIL



For more information visit www.horizons.govt.nz
or freephone Horizons on **0508 800 800**