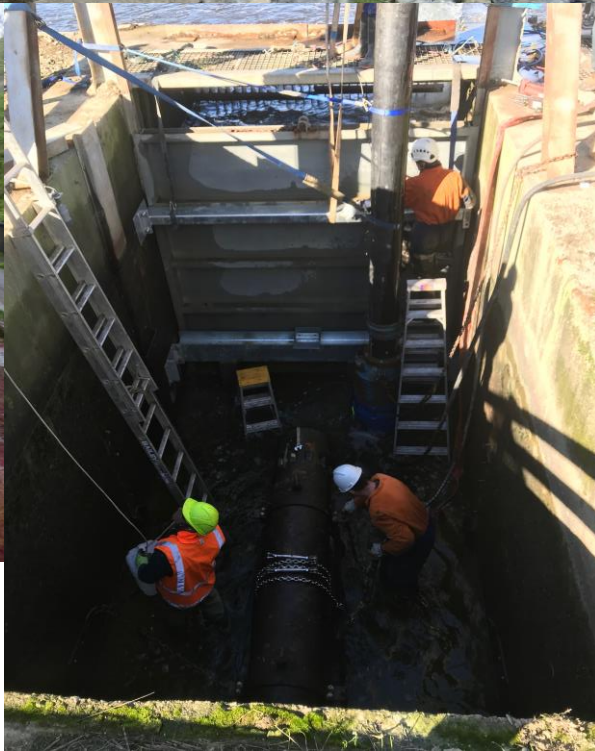




2021 SCHEME MEETINGS

Te Kawau Drainage Scheme

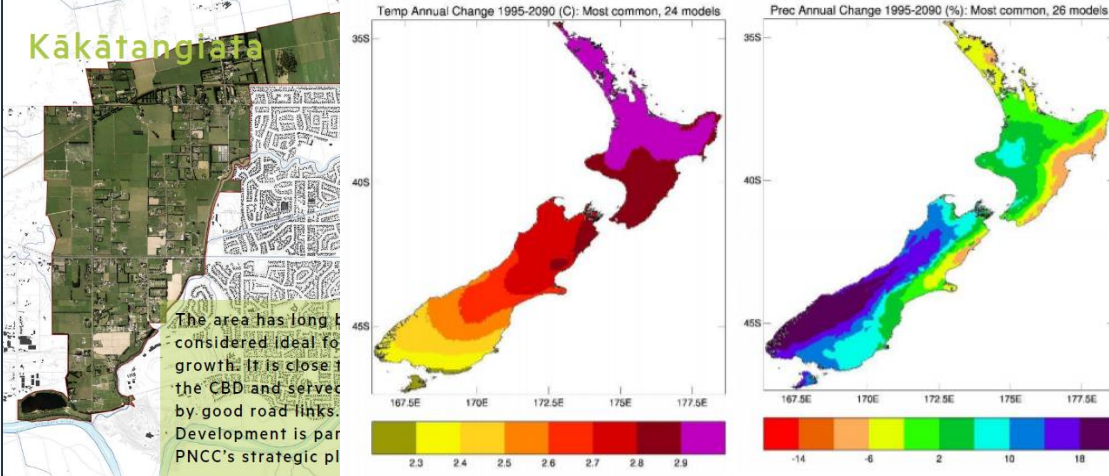


\$650M of assets

- 1,270km of river channel
- 1,100km of drain
- 23 pump stations with a total discharge capacity of 43m³/s
- 54 detention dams that can store 4.3M cubic metres of floodwater
- 500km of stopbanks



horizons.govt.nz

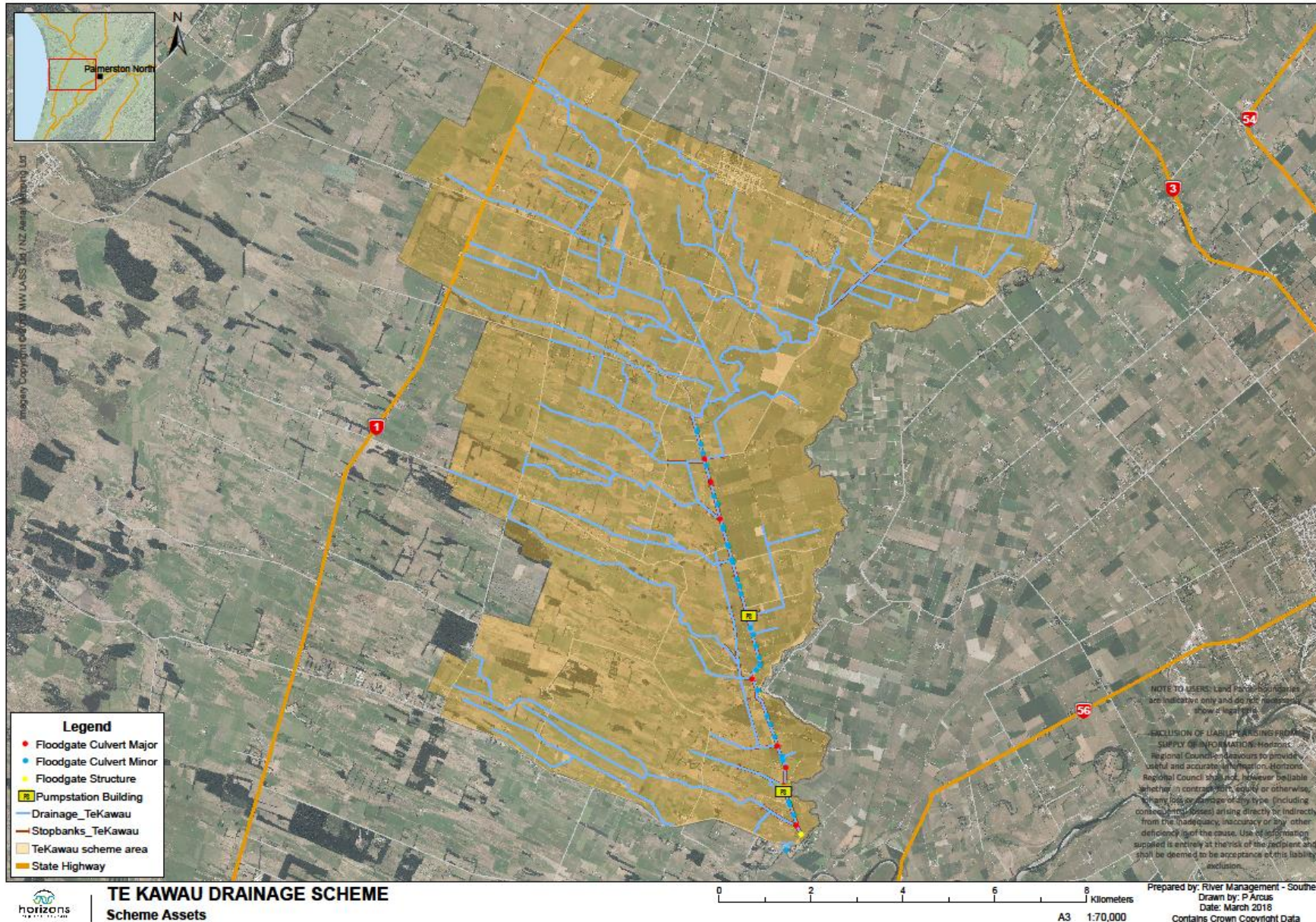


SIGNIFICANT RIVER MANAGEMENT ISSUES



- Accelerating land use change
- Unsustainable land use
- Climate change
- Asset reliability
- Evolving community expectations

TE KAWAU DRAINAGE SCHEME



Scheme Facts

- Scheme Assets.
 - 46 floodgated culverts
 - 179 km of drainage channels
 - 2 Pump station
 - 29 km Stopbanks
- Total Asset Value: \$8,270,486.
- Scheme Area 14,240ha.
- Predominantly servicing dairy, horticultural land and an increasing number of lifestyle blocks.

TE KAWAU DRAINAGE SCHEME

Strategic Direction

Review the current configuration of the scheme to ensure that the scheme is providing a consistent level of service to all of the scheme ratepayers.

Aim

Maintain the existing network of drainage channels and flood protection and review the remaining life of the scheme major assets.

Scheme Design Criteria

- Drainage Channels:
 - Design is based on a 3-5 year rainfall event.
 - Drain full drainage coefficient of 25mm/day.
- Culverts:
 - Designed based on drain full plus 30%.
 - Designed for a 50mm head loss over the culvert.

TE KAWAU DRAINAGE SCHEME

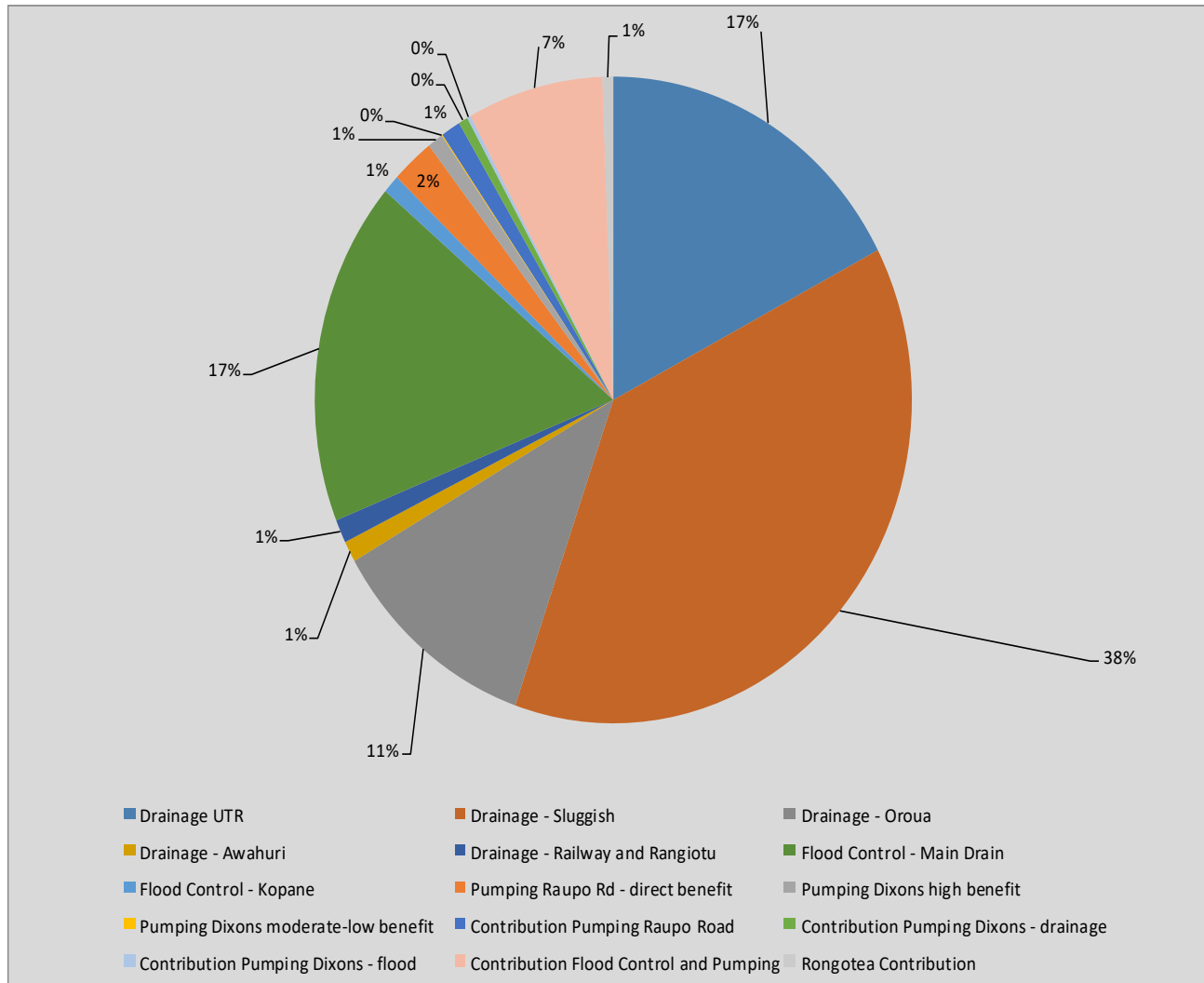
Scheme Design Criteria Continued

- Stopbanks:
 - Main Drain stopbanks are designed for a 3-4 year event before over topping of spillway is likely to occur.
- Pumping
 - Pumping Co-efficient:
 - Raupo Road = 12.4mm/ha/day
 - Dixons (Local Flows) = 52mm/ha/day
 - Dixons (spill over from No.6) = 4.2mm/ha/day



horizons.govt.nz

SCHEME FUNDING



Funding Policy

The Schemes funding comes from three revenue sources:

- Targeted Rates – differential targeted rates levied on properties directly benefiting from or causing the need for the work. 80% of scheme cost.
- General Rates – uniformed rate levied over all properties in the Horizons Region. 20% of the scheme cost.
- Other income – Revenue from lease land, forestry blocks, scheme reserves, etc. held by the scheme. This is used to reduce the level of the targeted rate

KEY ACTIVITIES AND ISSUES: 2020-2021

- **Scheme Expenditure**
 - Expenditure is on track to be within the original budget.
 - Insurance cost increased \$7k.
- **Works Activity**
 - Drain maintenance program is currently being prepared and work will hopefully be underway by mid March.
 - A review performance of the Sluggish Main Drain between Main Drain Road and Leen Road is currently underway.

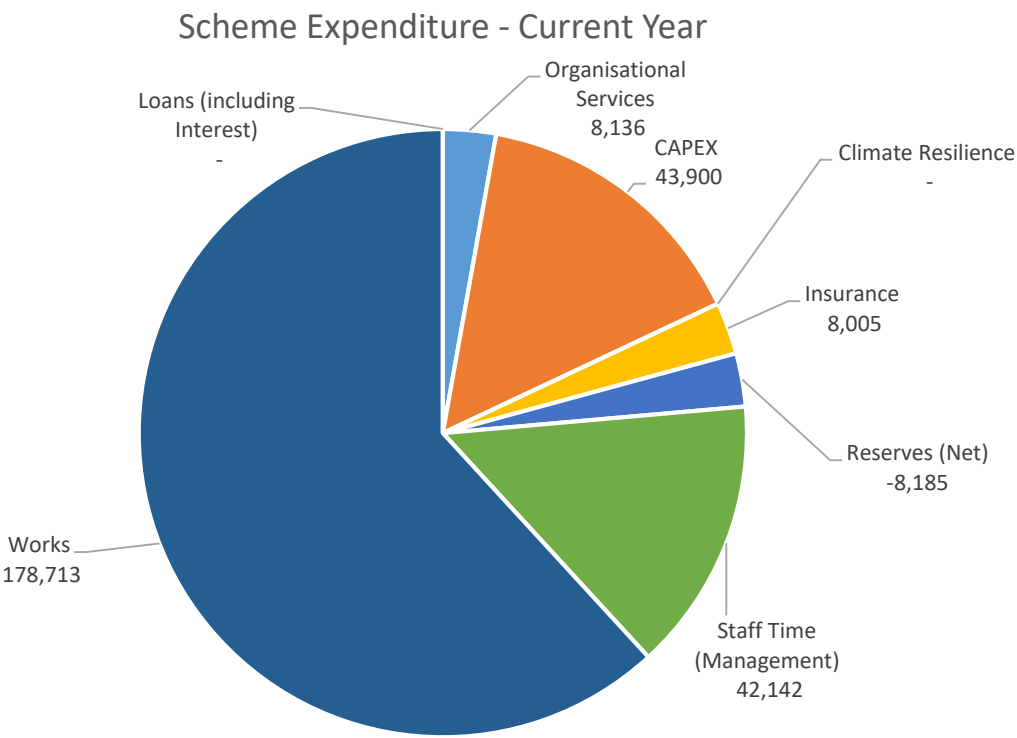
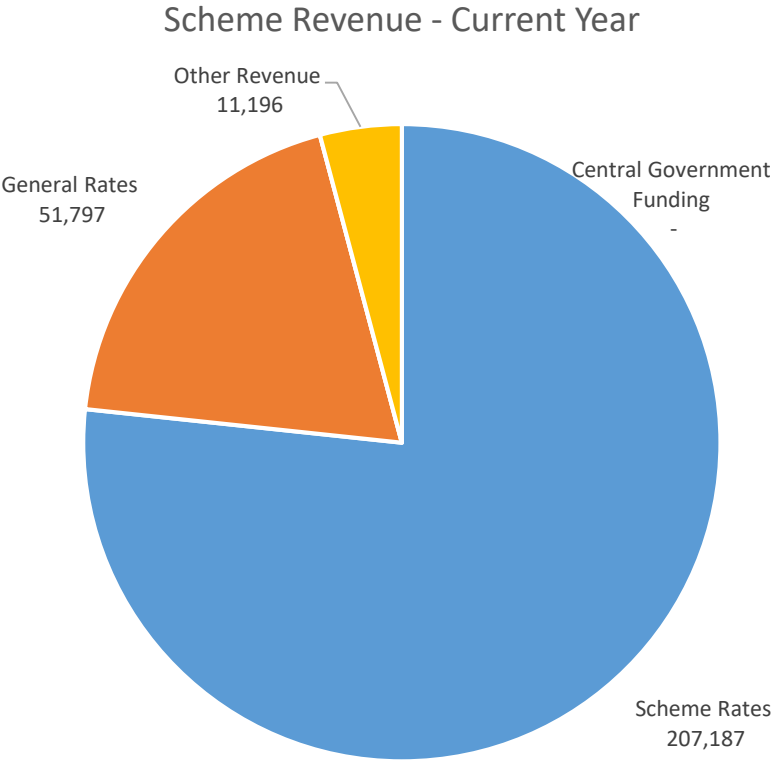
LOWES DRAIN FLOODGATE REPLACEMENT



RAUPO ROAD CHAMBER HATCH INSTALL



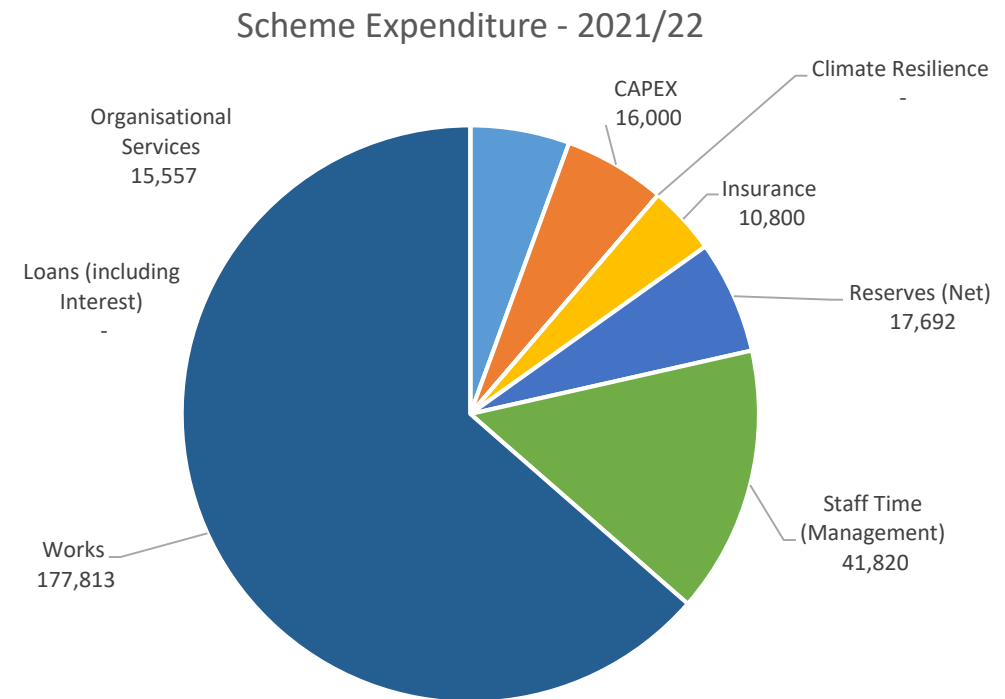
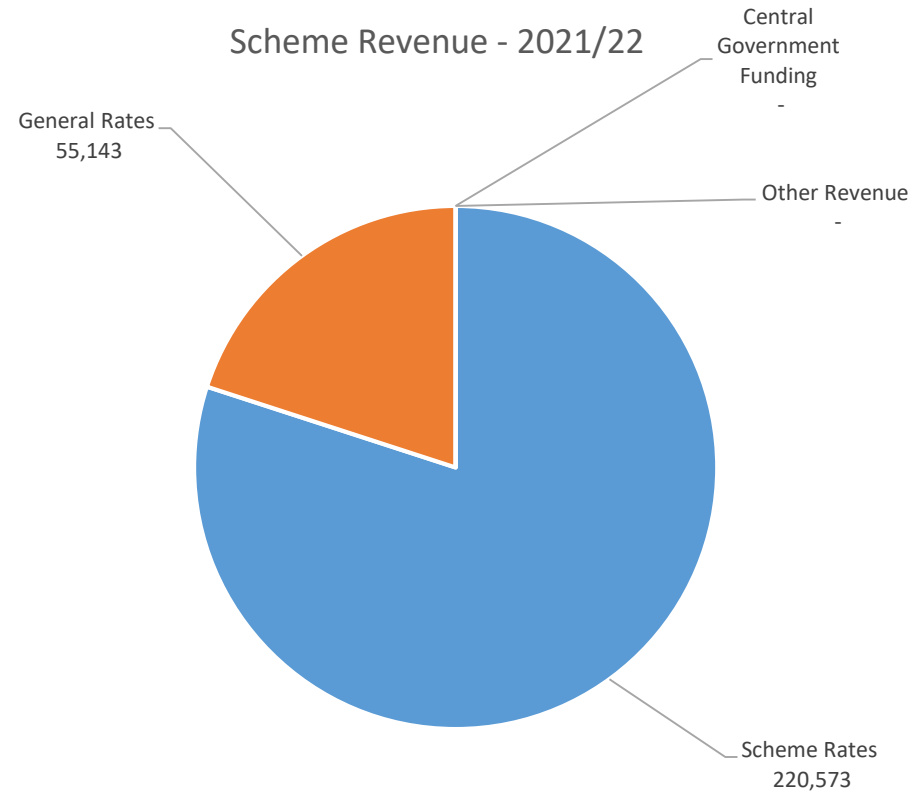
INCOME AND EXPENDITURE: 2020-21



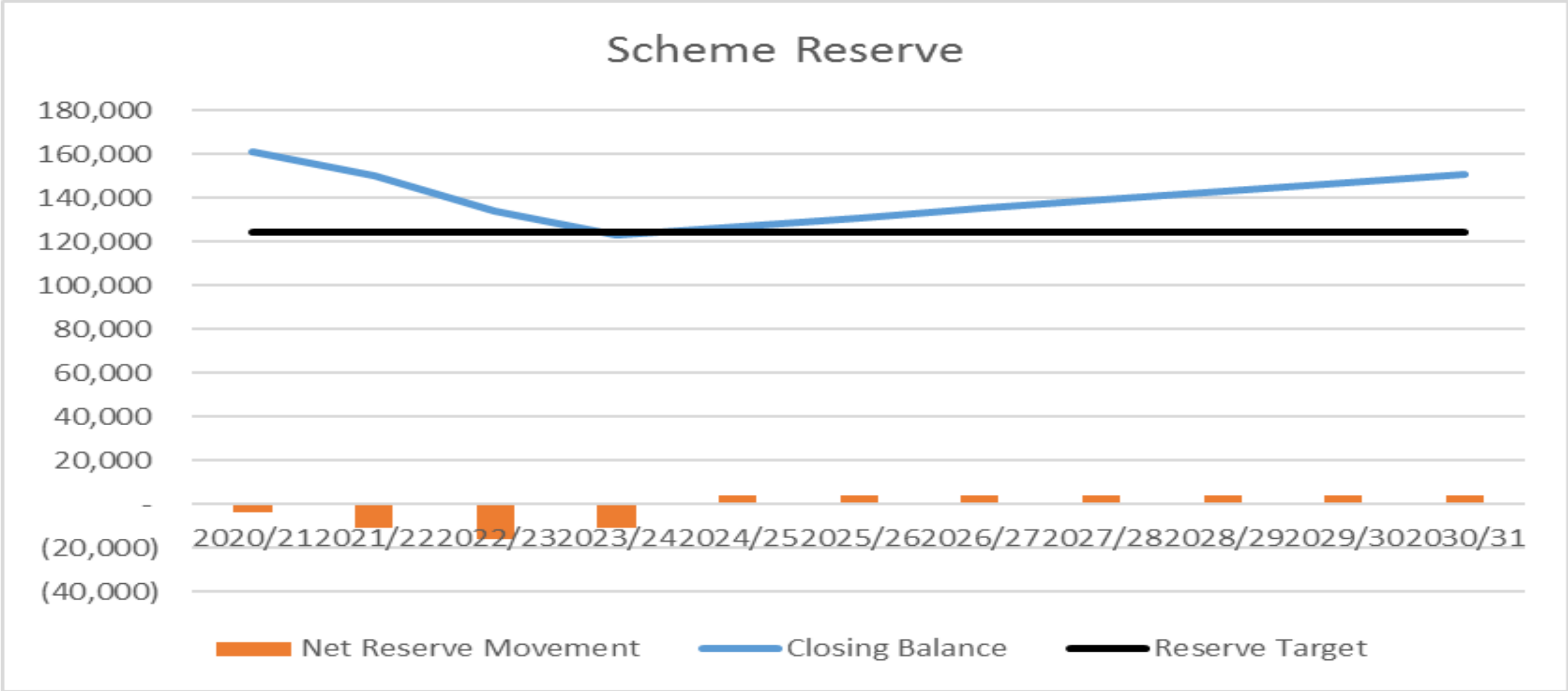
KEY ACTIVITIES AND ISSUES: 2021-22

- Scheme Budget
 - Scheme Rate increase of \$13,377 or 6.5%
 - Continuing to drawdown on Emergency \$16k but unsustainable.
 - Increasing insurance cost
- Works Activity
 - On going maintenance of scheme assets.
- Review/Audit
 - Structural review of all major assets including Te Kawau Gates.

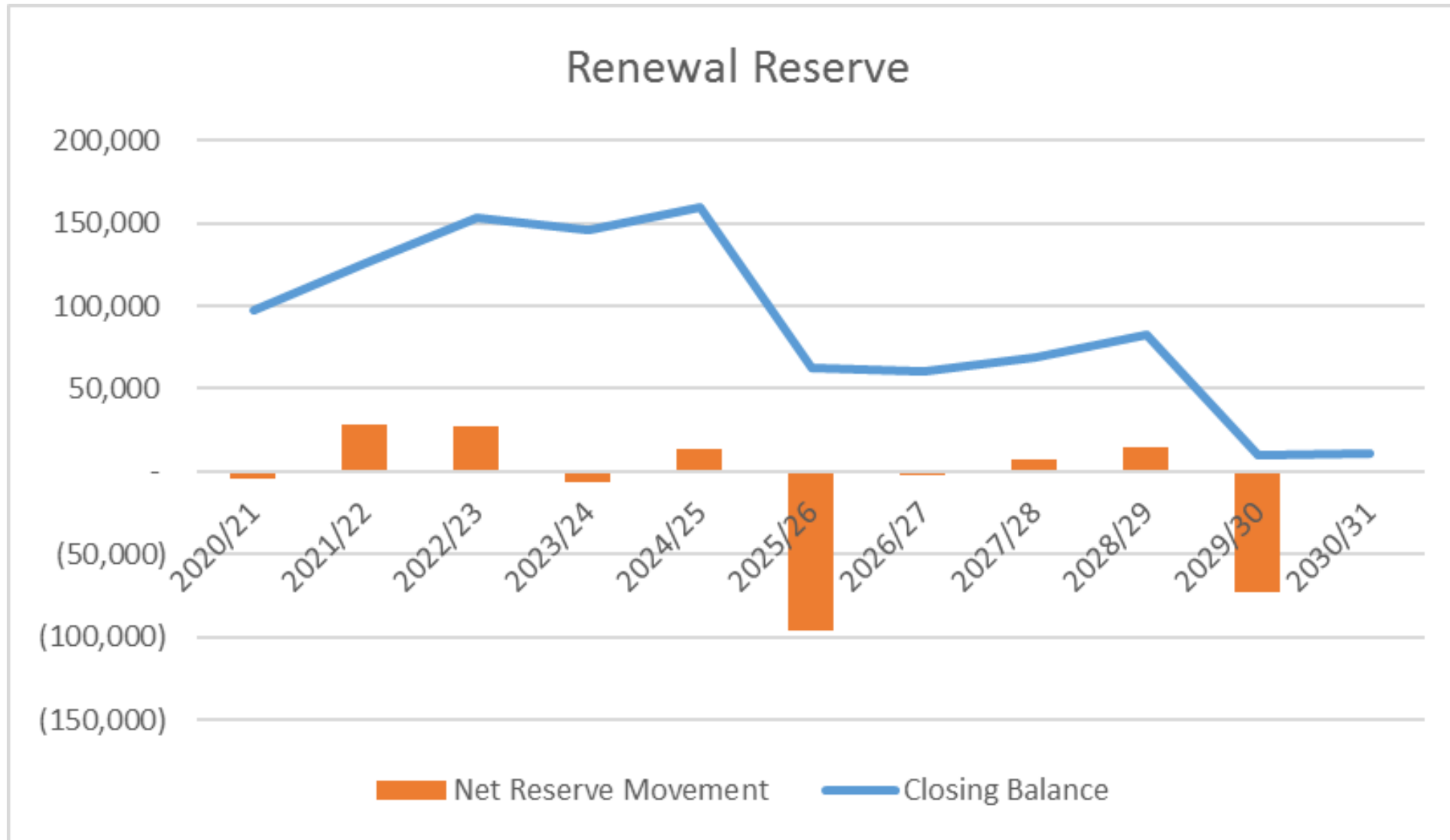
SCHEME REVENUE AND EXPENDITURE 2021-22



EMERGENCY RESERVE BALANCE



RENEWAL RESERVE BALANCE





ORANGA WAI - OUR FRESHWATER FUTURE

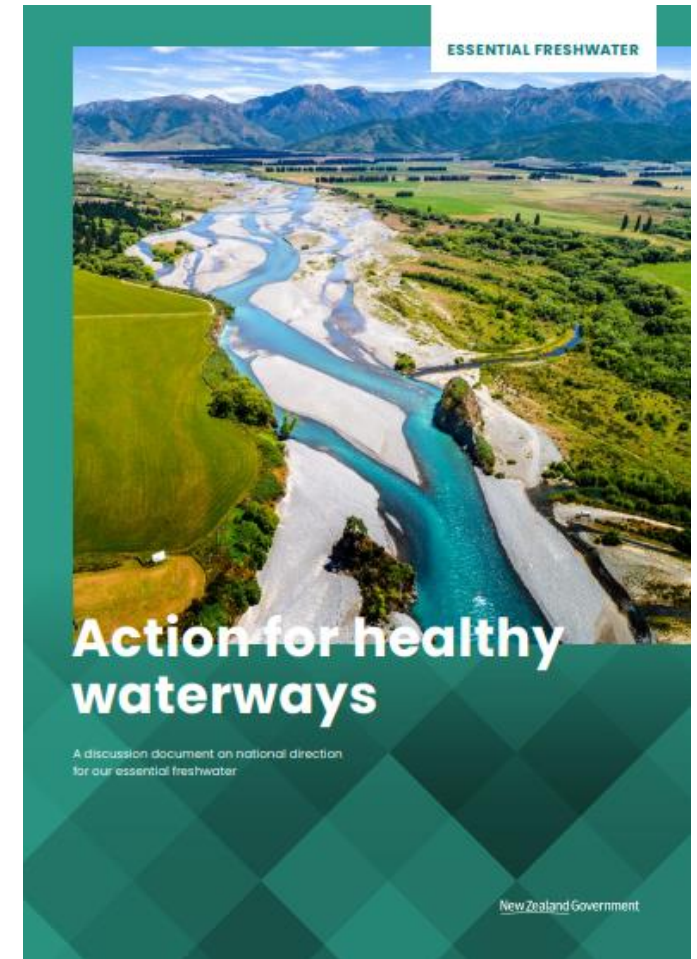
Implementing Government's 'Essential Freshwater' package

OVERVIEW

Government has introduced new requirements for managing the health of freshwater in New Zealand, including:

- Changes to the Resource Management Act 1991 (RMA)
- An updated National Policy Statement for Freshwater Management 2020 (NPS-FM)
- New National Environmental Standards for Freshwater (NES-FW)
- Additional new regulations under s360 of the RMA for:
 - Measuring and Reporting of Water Takes; and
 - Stock exclusion

Some of these changes come into effect immediately (from gazettal 3 August 2020), while others are phased in over time.



NATIONAL ENVIRONMENTAL STANDARDS FOR FRESHWATER & REGULATIONS



horizons.govt.nz

THE TASK AHEAD

Regional councils are required to:

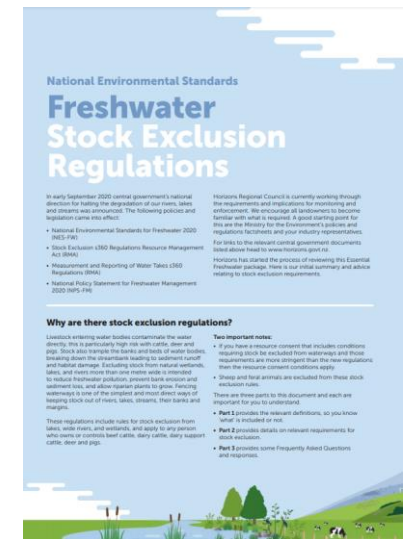
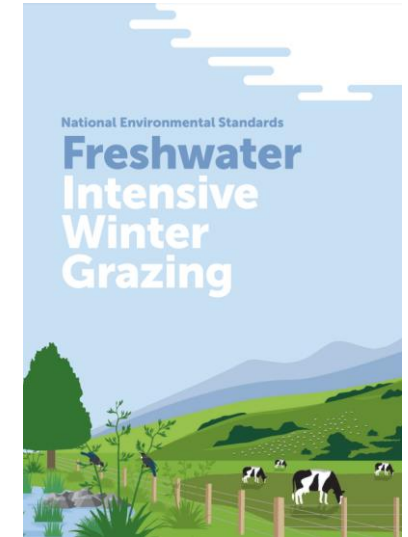
- Issue and monitor consents relating to intensification of land use (until the end of 2024), intensive winter grazing*, stock holding areas and feedlots – all come into effect from mid-2021, and activities that have more than a minor impact on wetlands and streams (effective from 3 Sep 2020).

*Land owners seeking consent for intensive winter grazing need to work directly with iwi/hapū.

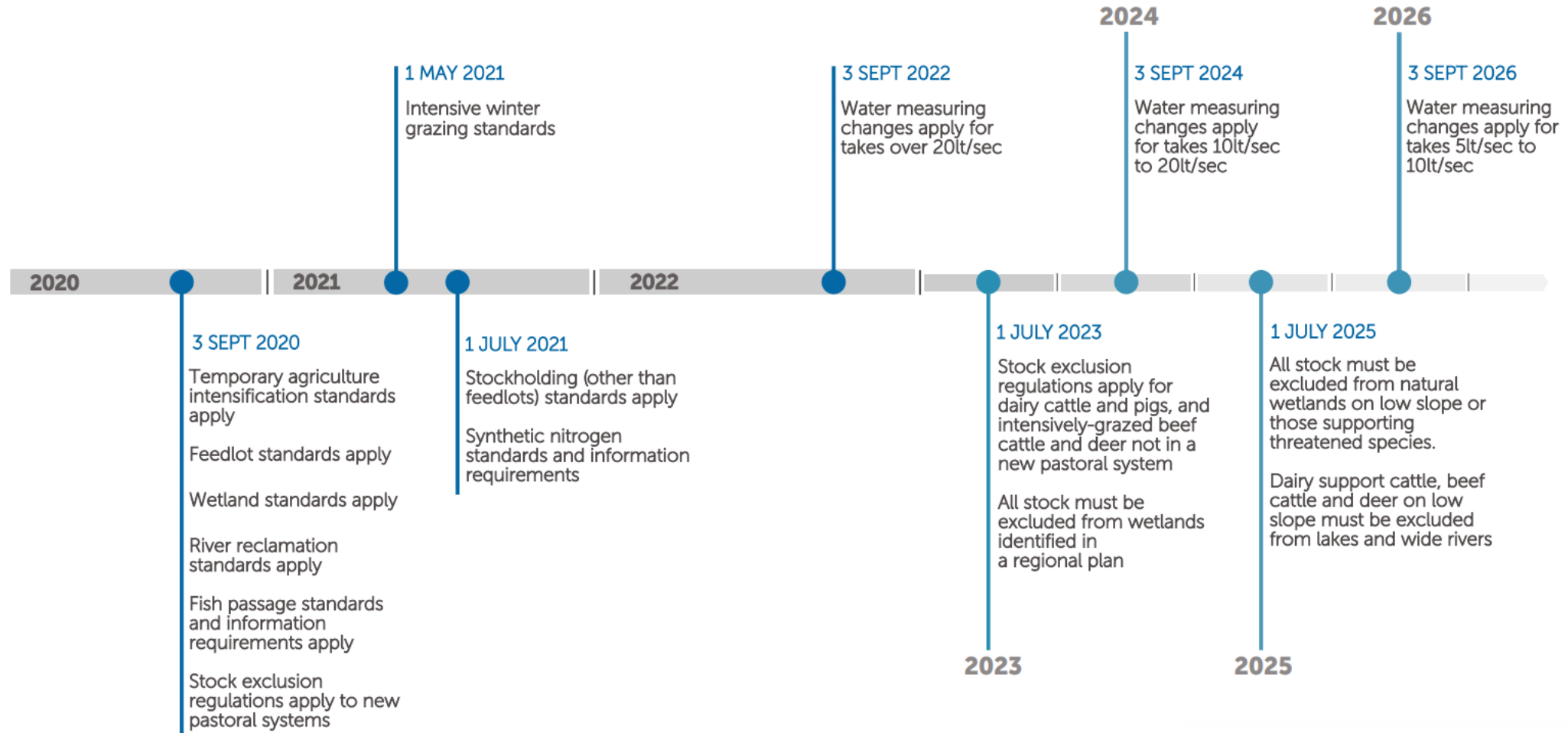
- Collect data and monitor levels of synthetic nitrogen fertiliser use
- Stock exclusion (dairy and beef cattle, pigs and deer) from wetlands, streams and their margins (>1m wide); requirements for bridges and culverts, phased in over time
- Real time monitoring and reporting of water takes >5 l/s

Also coming:

- Mandatory freshwater modules in farm plans (currently in draft)



New National Freshwater Rules



NATIONAL POLICY STATEMENT FOR FRESHWATER MANAGEMENT (NPS-FM)



horizons.govt.nz

NATIONAL POLICY DIRECTION

Aim is to halt waterway degradation within 5 years and improve water quality within a generation

NPS-FM introduces new (or updated) requirements including:

- Managing freshwater in a way that 'gives effect' to Te Mana o te Wai.
- Improving degraded water bodies, and maintaining or improving all others applying 'national bottom lines'.
- Compulsory values: ecosystem health, human contact, threatened species and mahinga kai, plus other values we must consider
- We must use the best information available including, where practicable, complete and scientifically robust data, but not refrain from decision making on the basis of uncertainty.
- Monitor and report annually on freshwater (including the data used); publish a synthesis report every five years containing a single ecosystem health score and respond to any deterioration.

What is a National Policy Statement?

In essence, national policy statements prescribe objectives and policies for local authorities for matters of national significance.

In some cases they provide direction as to how local authorities give effect to those policies and objectives.

This includes the NPS-FW and will likely include the NPS for Indigenous Biodiversity to be released in 2021.

TE MANA O TE WAI

6 principals:

- Mana whakahaere
- Kaitiakitanga
- Manaakitanga
- Governance
- Stewardship
- Care and respect

Hierarchy of obligations:

1. The health and well-being of water bodies and freshwater ecosystems
2. The health needs of people (such as drinking water)
3. The ability of people and communities to provide for their social, economic and cultural well-being, now and in the future

Read MfE's [Te Mana o te Wai factsheet](#) or watch their [brief explainer videos](#)



Figure 1: How regional councils must give effect to Te Mana o te Wai

THE TASK AHEAD

Regional councils are required to:

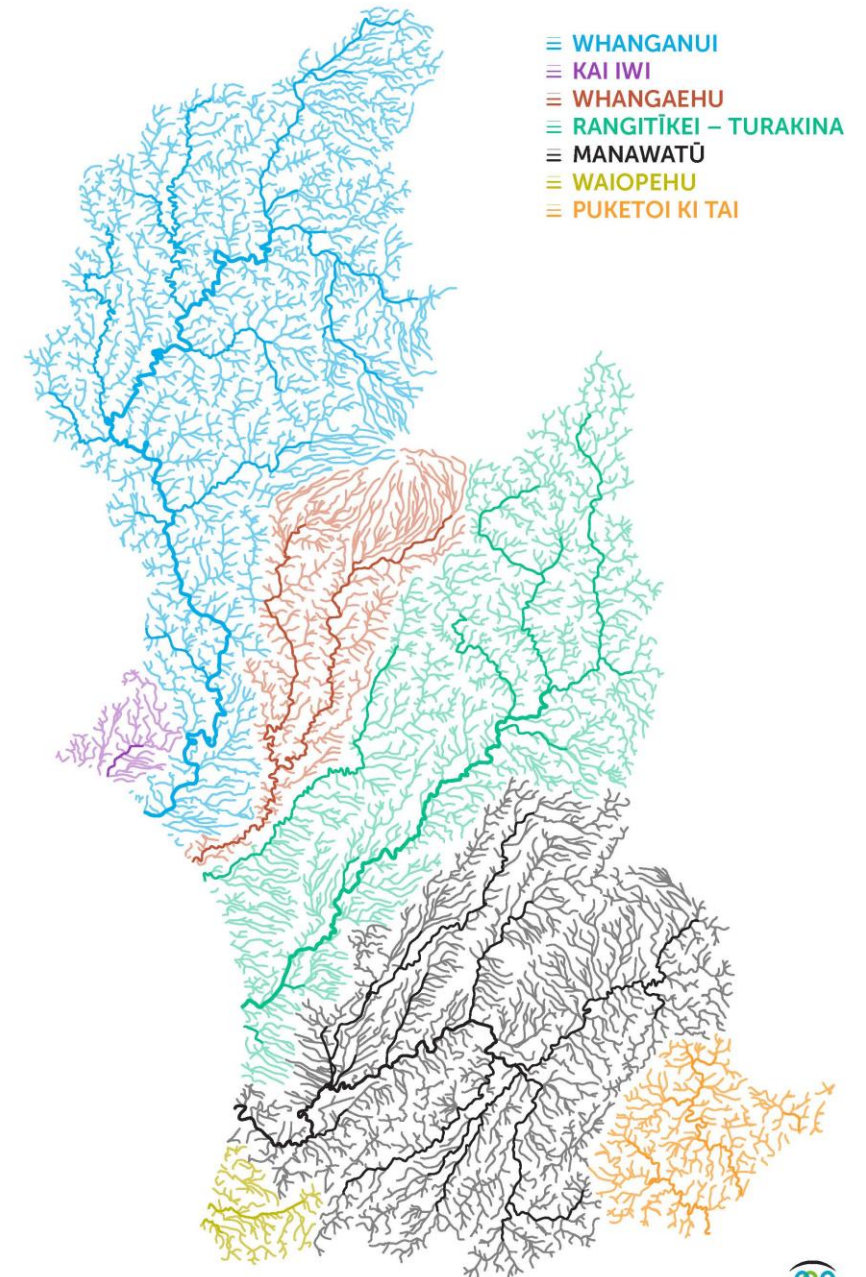
- engage with communities and tangata whenua to:
 - set our long-term vision (30 years and beyond);
 - implement the National Objectives Framework (NOF); and
 - report on progress towards this vision.
- map existing wetlands and encourage their restoration; address in-stream fish barriers

For each Freshwater Management Unit (FMU) we must identify:

- our values and vision for freshwater
- environmental outcomes (for each value), attributes (and their baseline and target states); and
- set limits and/or prepare action plans to achieve environmental outcomes.

We must use the best information available including, where practicable complete and scientifically robust data, but not refrain from decision making on the basis of uncertainty.

Monitor and report annually on freshwater (including the data used); pull a synthesis report every five years containing a single ecosystem health score and respond to any deterioration.



NATIONAL OBJECTIVES FRAMEWORK (NOF)

Table 5 – Ammonia (toxicity)

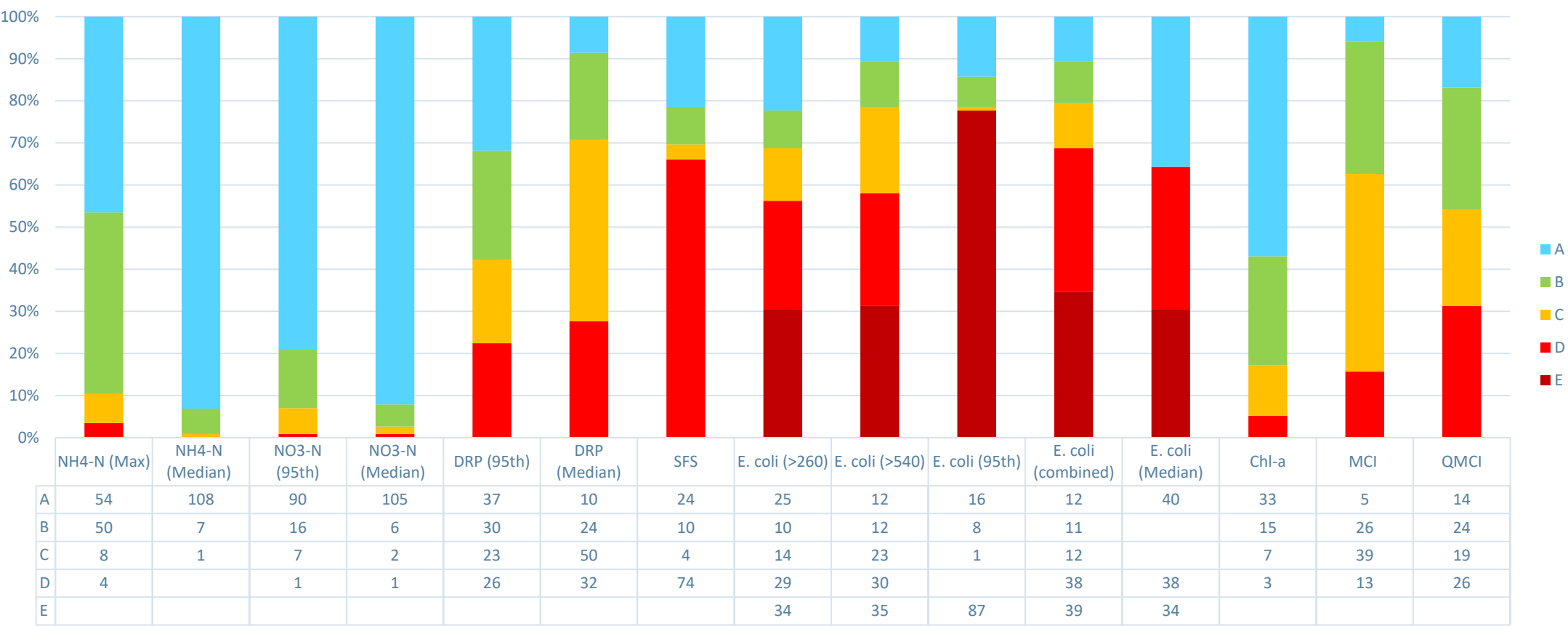
Value (and component)	Ecosystem health (Water quality)	
Freshwater body type	Rivers and lakes	
Attribute unit	mg NH ₄ -N/L (milligrams ammoniacal-nitrogen per litre)	
Attribute band and description	Numeric attribute state	
	Annual median	Annual maximum
A 99% species protection level: No observed effect on any species tested.	≤0.03	≤0.05
B 95% species protection level: Starts impacting occasionally on the 5% most sensitive species.	>0.03 and ≤0.24	>0.05 and ≤0.40
National bottom line	0.24	0.40
C 80% species protection level: Starts impacting regularly on the 20% most sensitive species (reduced survival of most sensitive species).	>0.24 and ≤1.30	>0.40 and ≤2.20
D Starts approaching acute impact level (that is, risk of death) for sensitive species.	>1.30	>2.20

Numeric attribute state is based on pH 8 and temperature of 20°C. Compliance with the numeric attribute states should be undertaken after pH adjustment.

- 22 attributes that provide for identified values (compulsory and non-compulsory)
- Some require limits to be set, others require action plans to address issues.
- Most have a 'national bottom line' set above the 'C' or 'D' band.

CURRENT STATE – SOE SITES

State of Environment Sites - NOF Assessment



LOTS OF WORK TO DO...

- Lots of new regulations
- More consultation and collaboration with tangata whenua, communities and industry
- Greater demand on iwi, Horizons, primary sector and industry, to provide guidance, and much more consent and compliance work
- New and expanded monitoring and reporting requirements (particularly for DO, fish, deposited sediment etc,)
- More data and information collection and sharing
- Establish limits and/or action plans to address water quality issues
- Ready ourselves to notify a plan change by Dec 2024
- Lots of work to do yet to meet with central and local government, iwi/hapū, primary sector reps, stakeholders to work through the details and interpretations, and communicate these with the wider community and write them into policy
- Further changes to come – NPS for indigenous biodiversity, implementing National Planning Standards, RM reform...

HORIZONS HELP AND GUIDANCE

Events and information:

Hui-a-iwi (twice a year) + three-weekly freshwater hui from late Feb 2021

[e-newsletters](#), guidance documents and brochures, social media,

Events: Manawatu River Improvement Festival – Sat 27 February, Rural Games – Fri 12-Sun 14 March, Central Districts Field Days – Thu 18-Sat 20 March, Community and scheme meetings

Check out our website: <https://www.horizons.govt.nz/managing-natural-resources/our-freshwater-future>

Please direct enquiries to info@ourfreshwaterfuture.nz



Oranga Wai | **OUR Freshwater FUTURE**



[horizons.govt.nz](https://www.horizons.govt.nz)


horizons
REGIONAL COUNCIL



horizons

REGIONAL COUNCIL



For more information visit www.horizons.govt.nz
or freephone Horizons on **0508 800 800**