



NATURE BASED SOLUTIONS

Oroua and Pohangina Rivers Project

INTRO

Admin:

- Election of Chair;
- Terms of Reference;
- Objectives of project.

ELECTION OF CHAIR

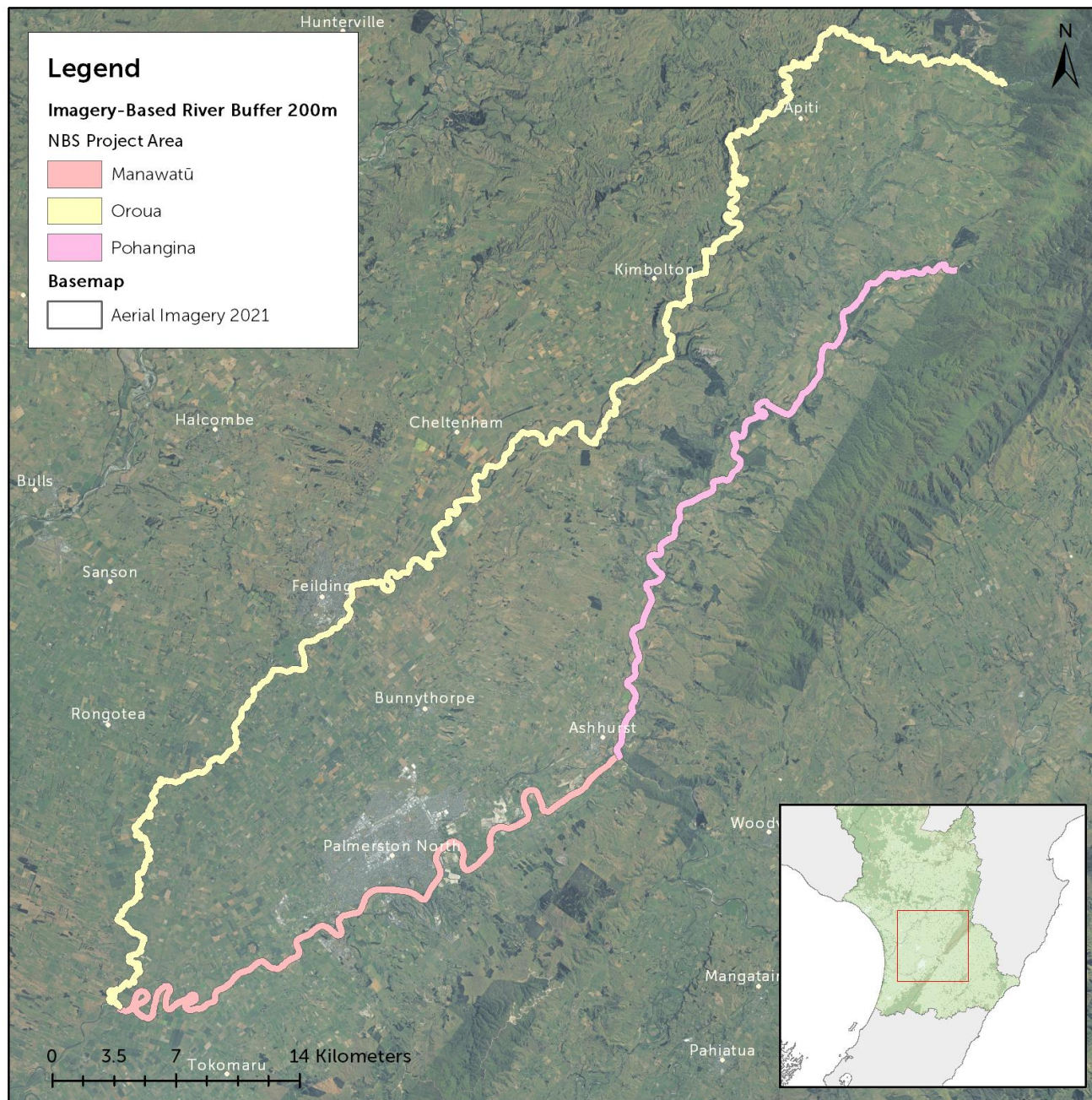


horizons.govt.nz

TERMS OF REFERENCE



horizons.govt.nz



APPROXIMATE PROJECT AREA

Manawatū River

From confluence with Oroua River to confluence with Pohangina River

Oroua River

From confluence with Manawatū River to confluence with Umutoi Creek

Pohangina River

From confluence with Manawatū River to confluence with Piripiri Stream

Prepared by Freshwater
Feb 2024
Contains Crown Copyright Data

EXCLUSION OF LIABILITY ARISING FROM SUPPLY OF INFORMATION
Horizons Regional Council endeavours to provide useful and accurate information. Horizons Regional Council shall not, however be liable whether in contract, tort, equity or otherwise, for any loss or damage of any type (including consequential losses) arising directly or indirectly from the inadequacy, inaccuracy or any other deficiency in information supplied irrespective of the cause. Use of information supplied is entirely at the risk of the recipient and shall be deemed to be acceptance of this liability exclusion.



PROJECT OBJECTIVES



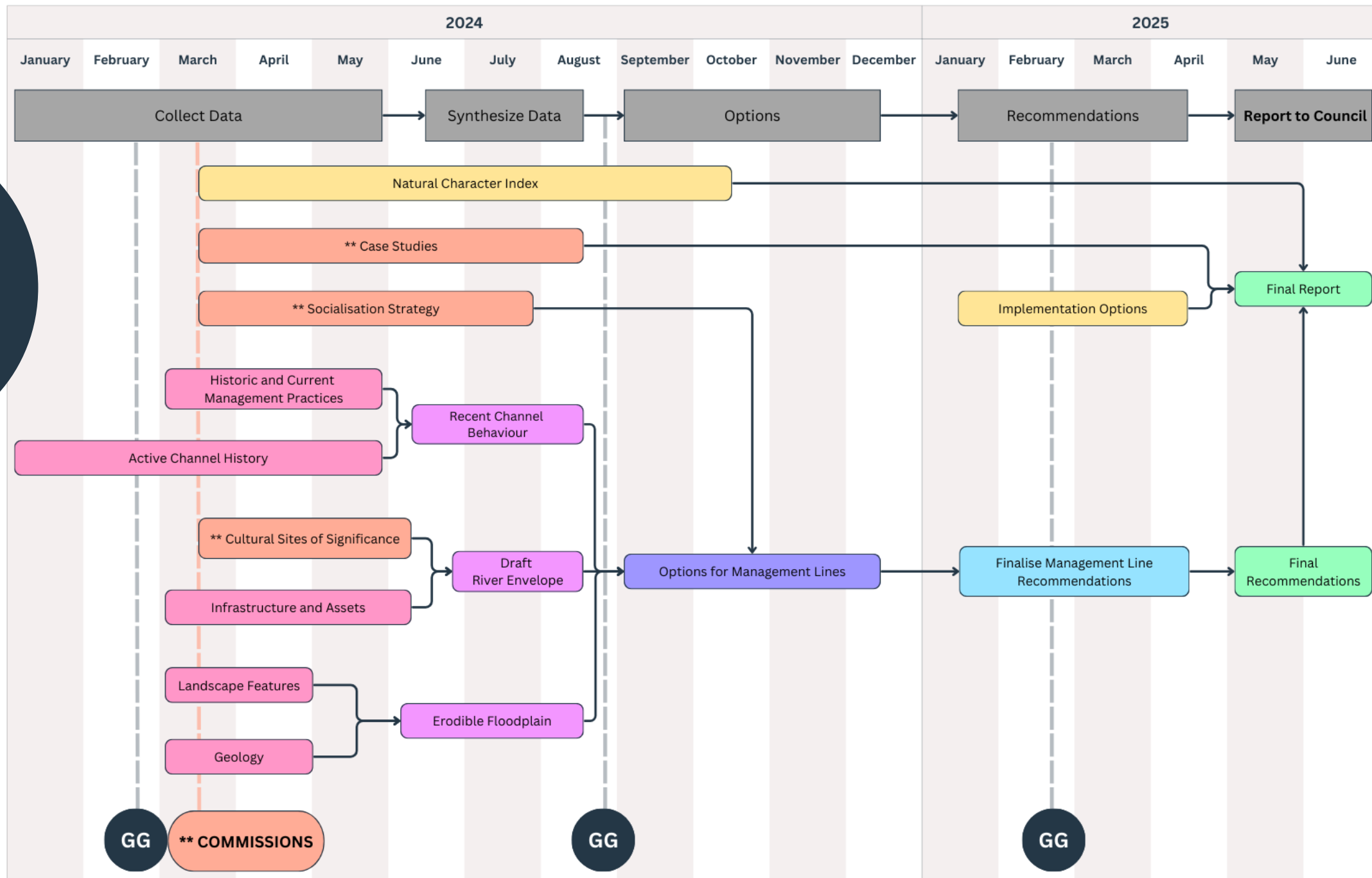
horizons.govt.nz

The work is based on increasing resilience across a range of parameters for the two catchments. We have had a go at an initial drafting of these however, are open to additional considerations and comments:

1. Ecological resilience by providing gravel beaches, improving riparian zones, widening corridors for native species movement between the ranges and the floodplains, increasing bird habitat, and recreating in-river habitat by allowing habitat complexity with pools, riffles, runs, meanders and side channels;
2. Engineering resilience by increasing the channel size, increasing the capacity to maintain river flows within the defined channel/s, and less on-going design;

3. Financial resilience by decreasing the requirements to highly confine the river/s and the associated infrastructure to maintain the river within a highly confined channel, reducing future flood damage and on-going repairs and maintenance of tightly confined systems; and Or Financial resilience, by decreasing the current emphasis that highly confines the rivers channel and associated infrastructure, which will result in a reduction of future flood damage, which in the past has lead to ongoing repairs and maintenance of restricted systems.
4. Community wellbeing by creating open river spaces that the community can access, use and interact with or Community understanding and wellbeing by creating open river spaces with better access to enjoy and appreciate the rivers and neighboring biodiversity.

Project Workflow (indicative only)



GOVERNANCE GROUP

Next Meeting...



horizons.govt.nz



horizons

REGIONAL COUNCIL



For more information visit www.horizons.govt.nz
or freephone Horizons on **0508 800 800**