



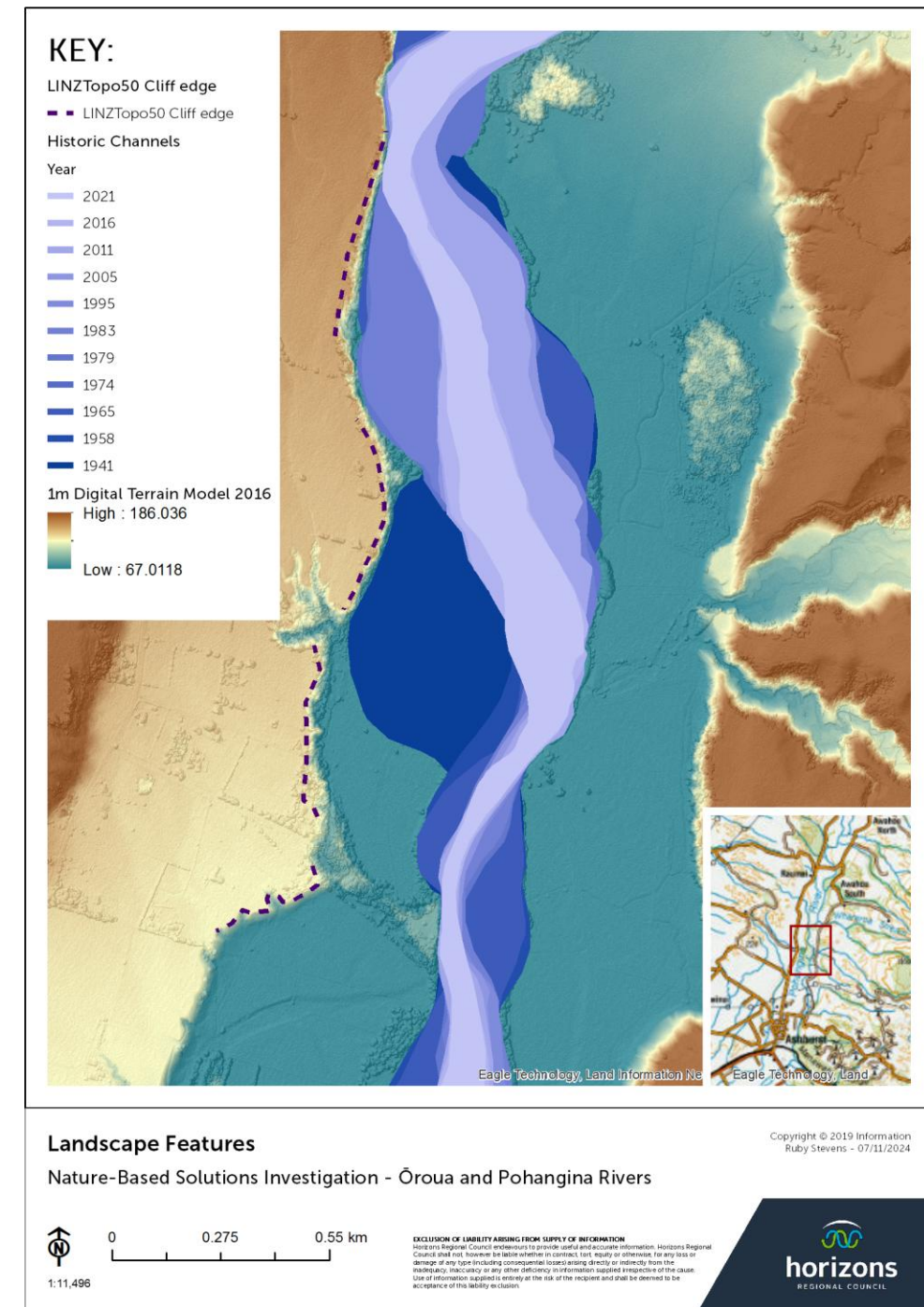
NATURE-BASED SOLUTIONS INVESTIGATION

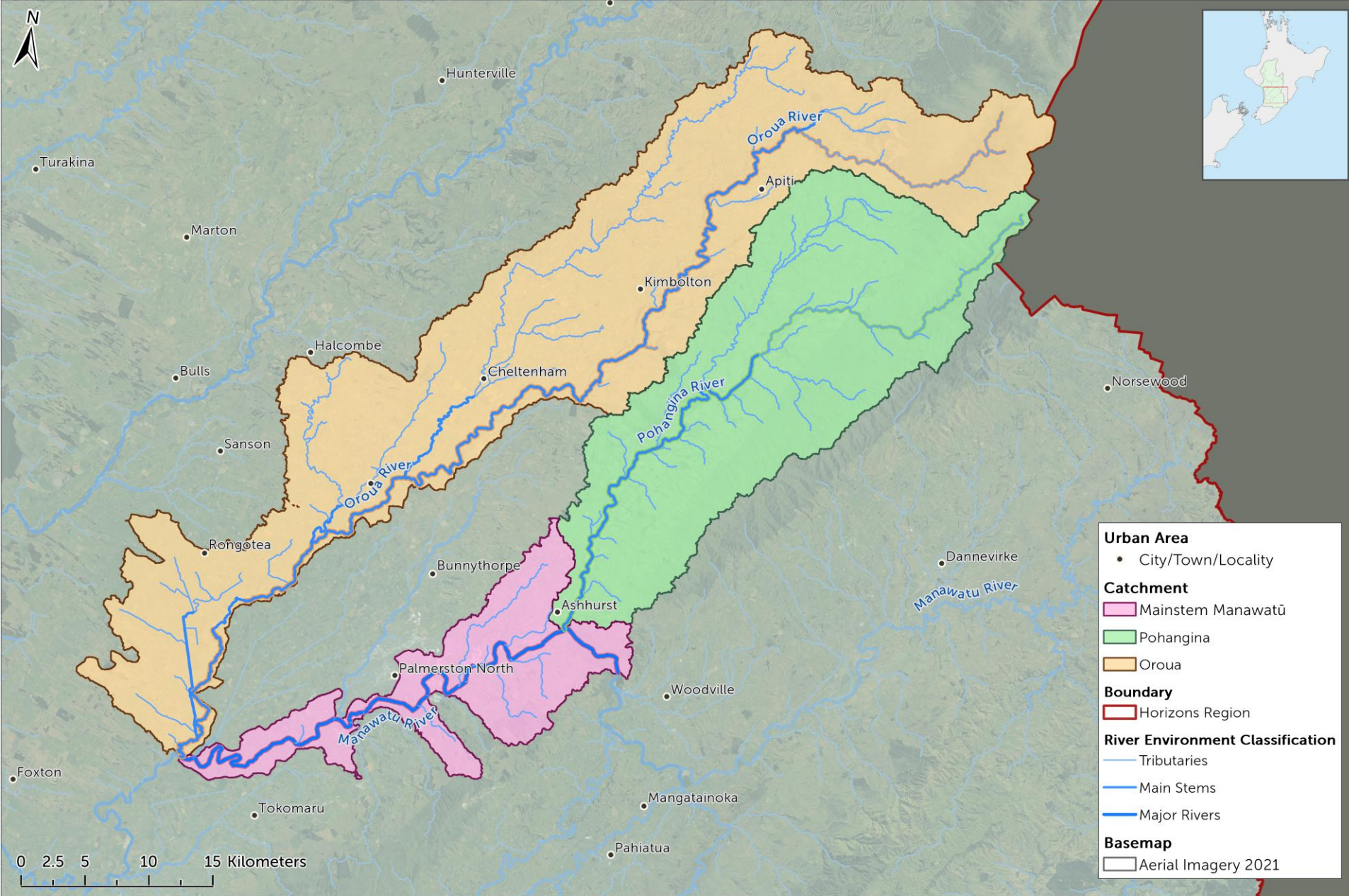
Ōroua and Pohangina Rivers

WORK PROGRAMME UPDATE

Timeframes and Milestones

- Project tracking behind schedule;
- Ōroua and Pohangina NCI work new contractor to be found;
- Room for the River lines will now be drafted by an external;
- Mātauranga input being developed.





Oroua and Pohangina River Project

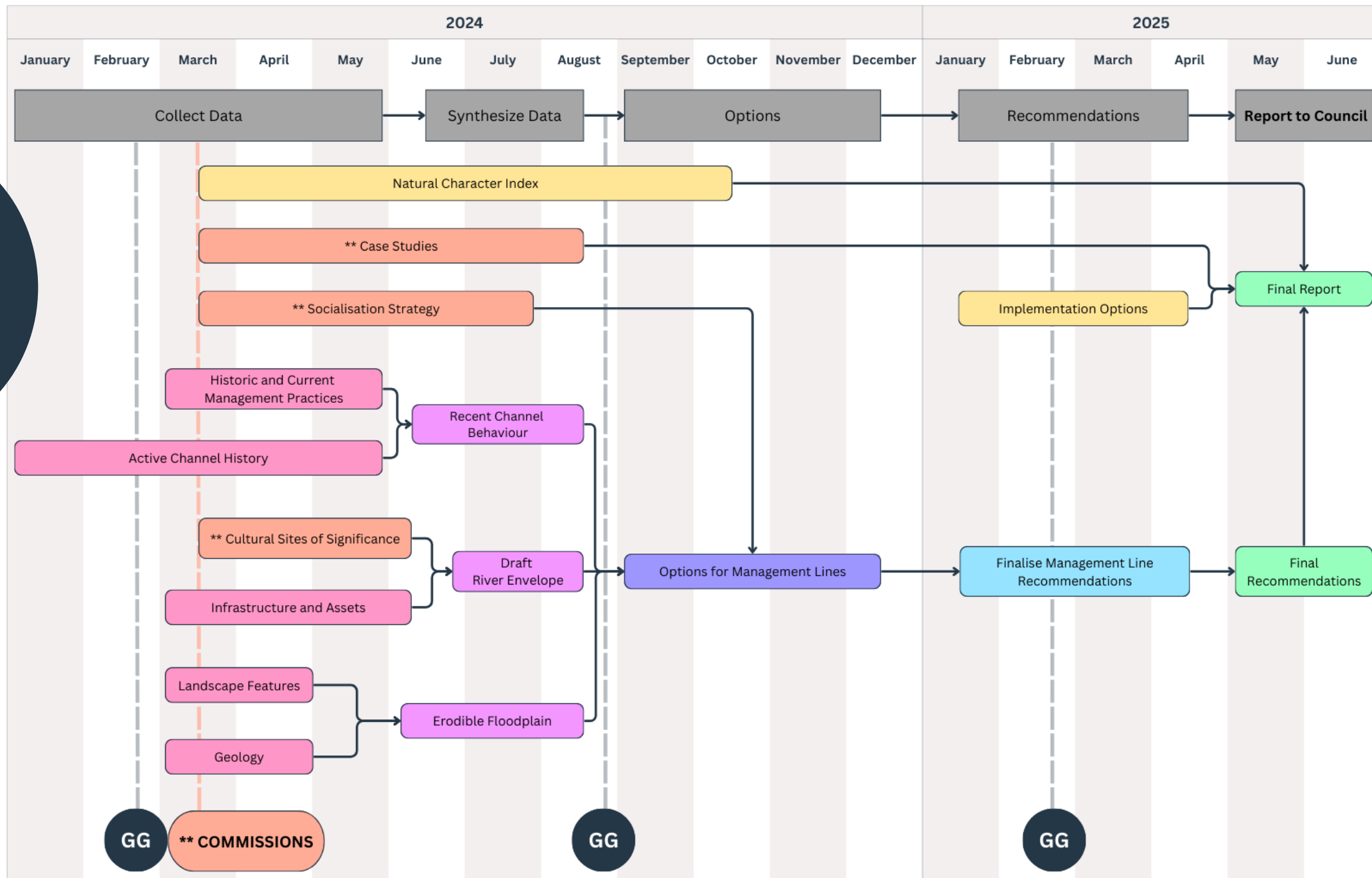
Oroua, Pohangina, and Manawatu (from confluence with Oroua to Gorge)

Prepared by: Ruby Stevens, Freshwater Team
Date: 26/10/2023
Contains Crown Copyright Data



EXCLUSION OF LIABILITY ARISING FROM SUPPLY OF INFORMATION: Horizons Regional Council endeavours to provide useful and accurate information. Horizons Regional Council shall not, however be liable whether in contract, tort, equity or otherwise, for any loss or damage of any type (including consequential losses) arising directly or indirectly from the inadequacy, inaccuracy or any other deficiency in information supplied irrespective of the cause. Use of information supplied is entirely at the risk of the recipient and shall be deemed to be acceptance of this liability exclusion.

Project
Workflow
(indicative only)





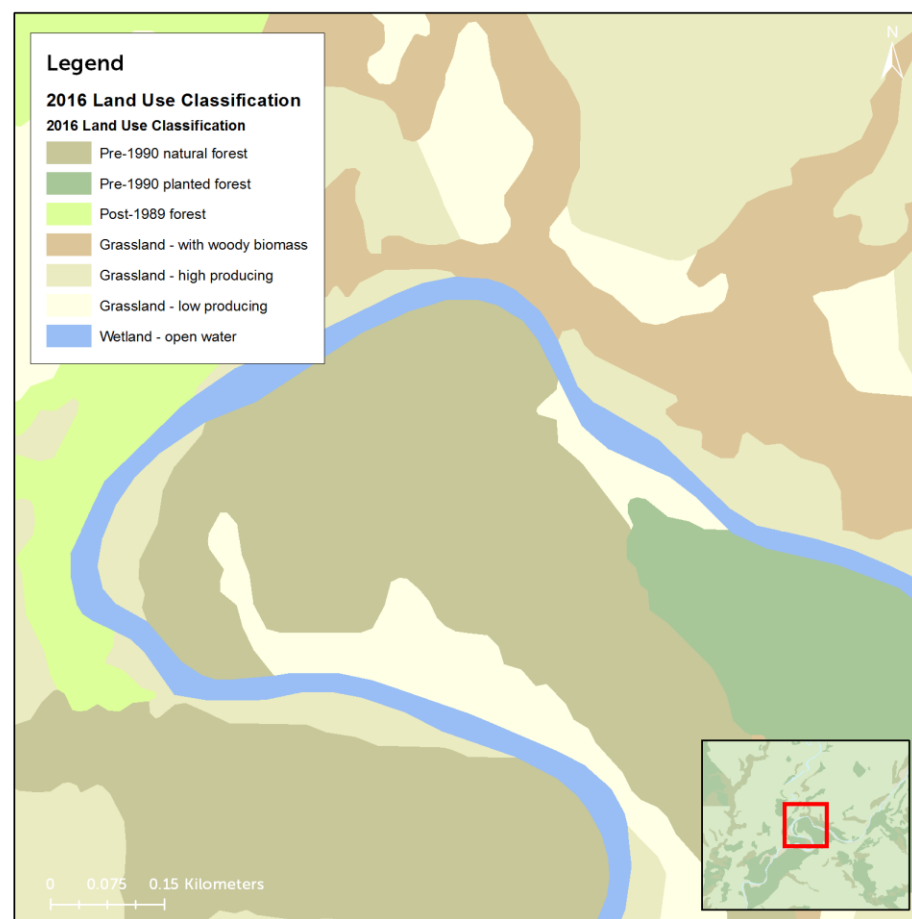
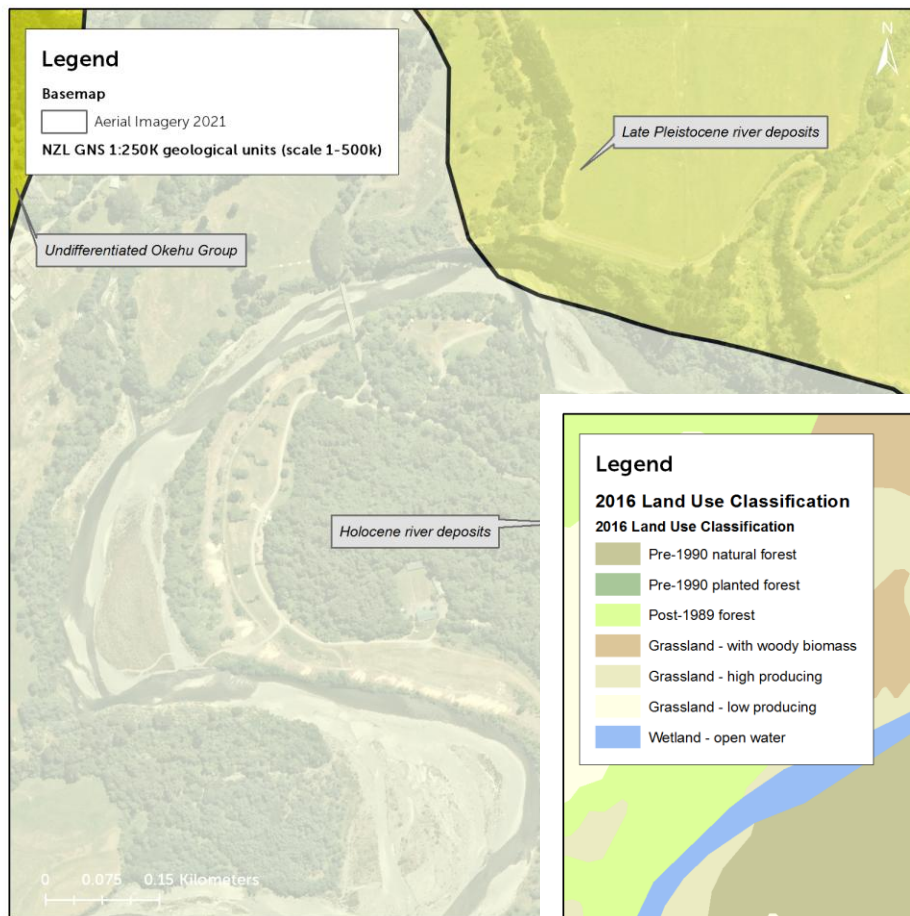
DATA COLLECTION EXAMPLES:

TŌTARA RESERVE, POHANGINA

EXCLUSION OF LIABILITY ARISING FROM SUPPLY OF INFORMATION

Horizons Regional Council endeavours to provide useful and accurate information. Horizons Regional Council shall not, however be liable whether in contract, tort, equity or otherwise, for any loss or damage of any type (including consequential losses) arising directly or indirectly from the inadequacy, inaccuracy or any other deficiency in information supplied irrespective of the cause. Use of information supplied is entirely at the risk of the recipient and shall be deemed to be acceptance of this liability exclusion.

Prepared by Freshwater Team, Feb 2024
Contains Crown Copyright Data

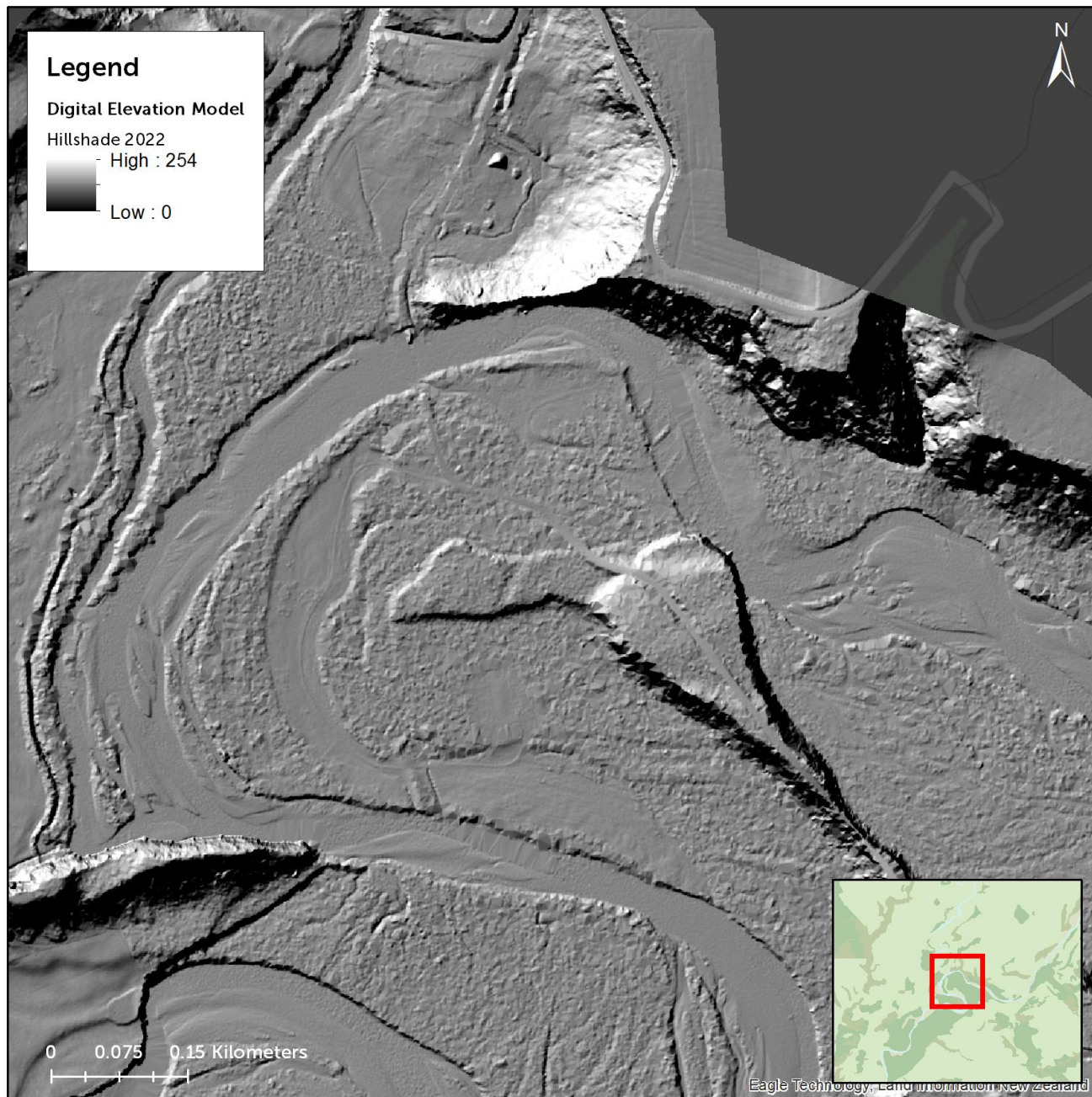


Tōtara Reserve: Geology/Land Use

Useful for broadly
understanding catchment
changes over time

Prepared by Freshwater Team, Feb 2024
Contains Crown Copyright Data

EXCLUSION OF LIABILITY ARISING FROM SUPPLY OF INFORMATION
Horizons Regional Council endeavours to provide useful and accurate information. Horizons Regional Council shall not, however be liable whether in contract, tort, equity or otherwise, for any loss or damage of any type (including consequential losses) arising directly or indirectly from the inadequacy, inaccuracy or any other deficiency in information supplied irrespective of the cause. Use of information supplied is entirely at the risk of the recipient and shall be deemed to be acceptance of this liability exclusion.



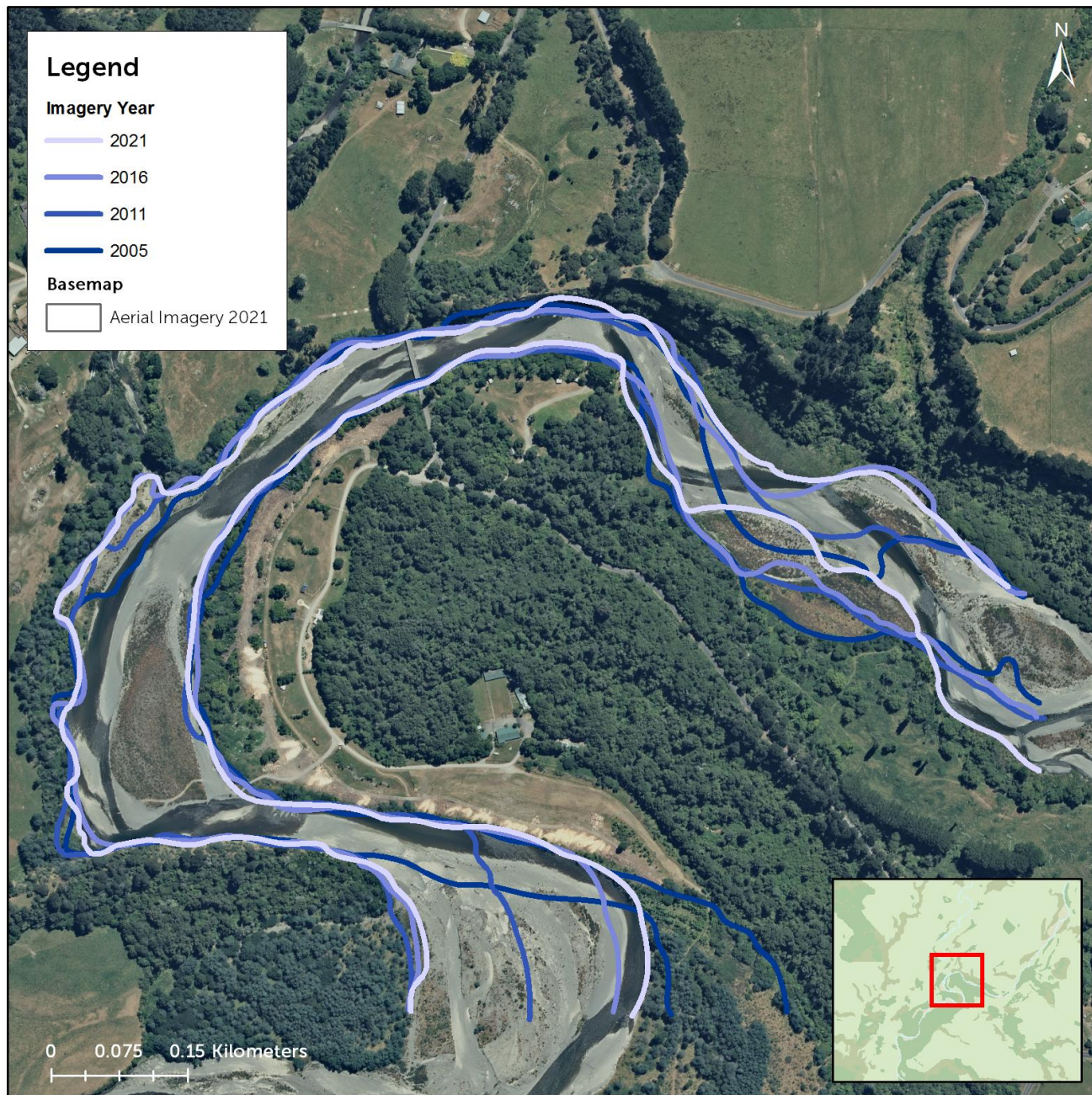
Tōtara Reserve: Surface Elevation Data

Provides evidence of recent
channel cut-offs and
terraces.

Useful for determining
natural features that
constrain the river.

Prepared by Freshwater Team, Feb 2024
Contains Crown Copyright Data

EXCLUSION OF LIABILITY ARISING FROM SUPPLY OF INFORMATION
Horizons Regional Council endeavours to provide useful and accurate information. Horizons Regional Council shall not, however be liable whether in contract, tort, equity or otherwise, for any loss or damage of any type (including consequential losses) arising directly or indirectly from the inadequacy, inaccuracy or any other deficiency in information supplied irrespective of the cause. Use of information supplied is entirely at the risk of the recipient and shall be deemed to be acceptance of this liability exclusion.



Tōtara Reserve: Historic Channel Movement from Aerial Imagery

Reflects the behaviour of
the river, typically over the
last 70-80 years.

Considered to be the most
useful dataset in
determining the river
management envelope.

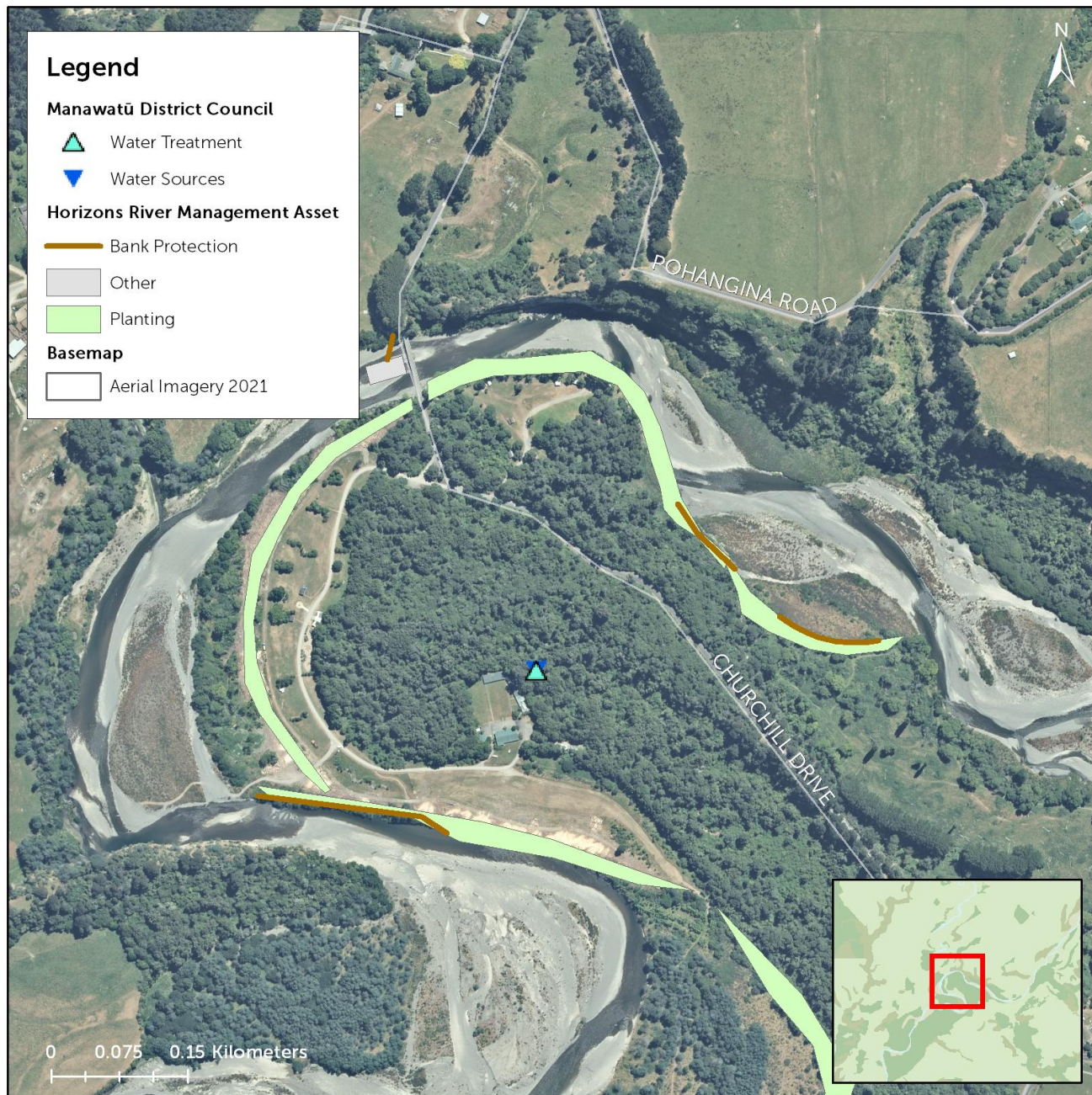
Prepared by Freshwater Team, Feb 2024
Contains Crown Copyright Data

EXCLUSION OF LIABILITY ARISING FROM SUPPLY OF INFORMATION
Horizons Regional Council endeavours to provide useful and accurate information. Horizons Regional Council shall not, however be liable whether in contract, tort, equity or otherwise, for any loss or damage of any type (including consequential losses) arising directly or indirectly from the inadequacy, inaccuracy or any other deficiency in information supplied irrespective of the cause. Use of information supplied is entirely at the risk of the recipient and shall be deemed to be acceptance of this liability exclusion.

INTERACTIVE WEB EXPERIENCE

Historic Channels Map





Tōtara Reserve: Utilities and Infrastructure

Useful for identifying critical assets.

Assets could include essential flood protection, wastewater treatments plants, etc.

Prepared by Freshwater Team, Feb 2024
Contains Crown Copyright Data

EXCLUSION OF LIABILITY ARISING FROM SUPPLY OF INFORMATION
Horizons Regional Council endeavours to provide useful and accurate information. Horizons Regional Council shall not, however be liable whether in contract, tort, equity or otherwise, for any loss or damage of any type (including consequential losses) arising directly or indirectly from the inadequacy, inaccuracy or any other deficiency in information supplied irrespective of the cause. Use of information supplied is entirely at the risk of the recipient and shall be deemed to be acceptance of this liability exclusion.

KEY:

LINZ Survey Marks

⊕ LINZ Survey Marks

PowerCo Poles

▲ PowerCo Poles

PowerCo LV Underground Cable

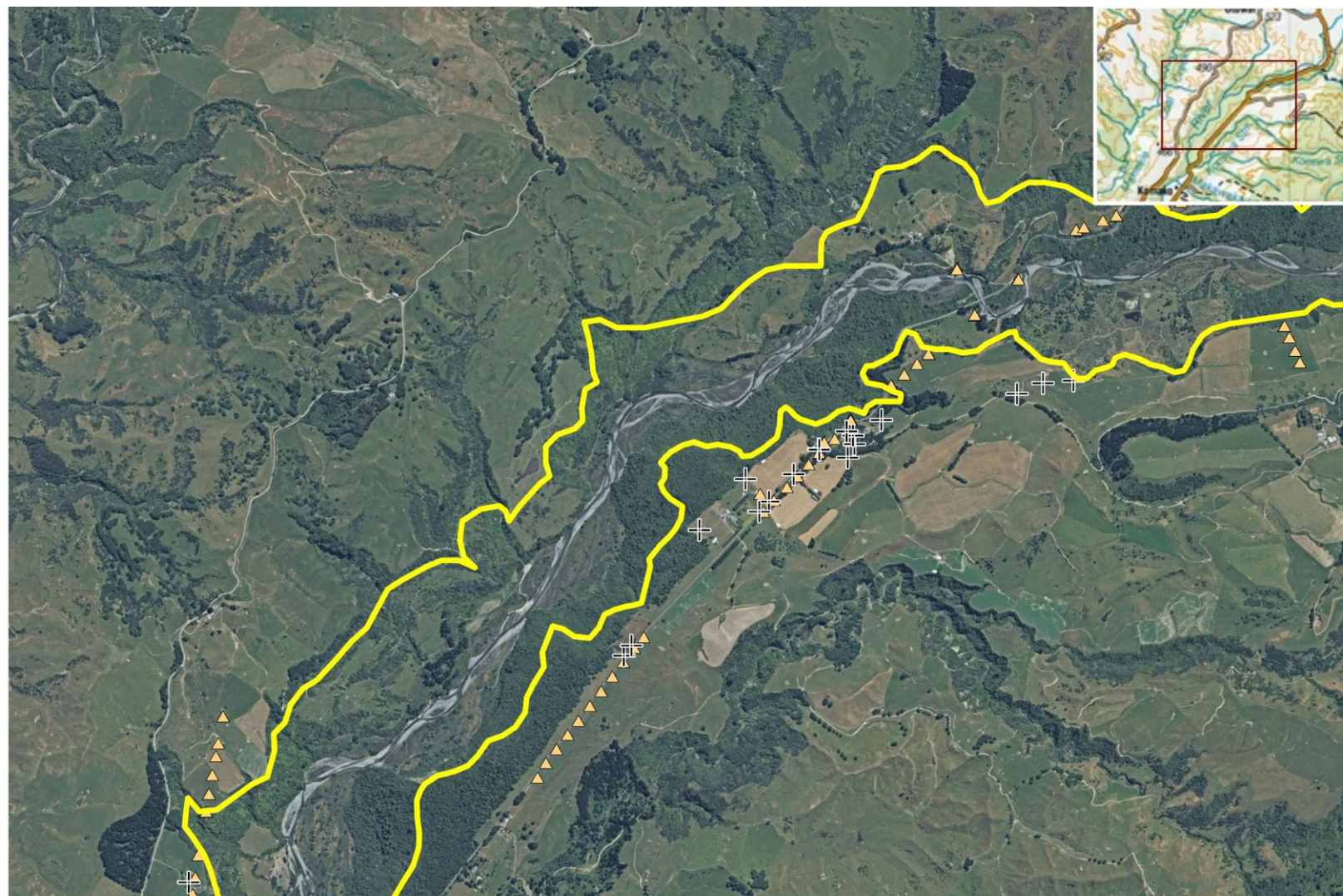
— PowerCo LV Underground Cable

PowerCo Earth Cable

— PowerCo Earth Cable

Floodplain Bounds

— DRAFT



NATURE-BASED SOLUTIONS

Floodplain Bounds Example DRAFT



0 0.2 0.4 0.8 km

EXCLUSION OF LIABILITY ARISING FROM SUPPLY OF INFORMATION
Horizons Regional Council endeavours to provide useful and accurate information. Horizons Regional Council shall not, however be liable whether in contract, tort, equity or otherwise, for any loss or damage of any type (including consequential losses) arising directly or indirectly from the inadequacy, inaccuracy or any other deficiency in information supplied irrespective of the cause. Use of information supplied is entirely at the risk of the recipient and shall be deemed to be acceptance of this liability exclusion.

Copyright © 2019 Information
Ruby Stevens - 5/03/2025



horizons.govt.nz



COMMS

- Next set of letters to be sent out (draft to be circulated);
- Email address remains active for the project;
- Project website continues to be updated as information becomes available;
- Previous river lines layers to be placed onto a external facing tool (LocalMaps);
- Room for Rivers lines will eventually be placed online.

GOVERNANCE GROUP

Next Meeting...



horizons.govt.nz



horizons

REGIONAL COUNCIL



For more information visit www.horizons.govt.nz
or freephone Horizons on **0508 800 800**