



Photo:
Reid Line spillway
gates, Feilding.



MANAWATŪ DISTRICT SCHEMES

19th February 2026

Pohangina Hall

Scheme Meetings Dates and Venues

	Scheme	Date	Time	Venue
MANAWATŪ DISTRICT	Pohangina-Ōroua River Control, Lower Kiwitea, Ashhurst	19-Feb-26	9:00 AM	Pohangina Hall
TARARUA DISTRICT	Mangatainoka, Upper Man/Lwer Mangahao, Tararua District Wide, Tawataia, South Eastern Ruahine	19-Feb-26	1:00 PM	The Village Hall, Woodville
LOWER MANAWATŪ AREA	Lower Manawatū, Manawatū Drainage, Kahuterawa Scheme, Te Kawau	20-Feb-26	9:00 AM	Kairanga Hall
HOROWHENUA DISTRICT	Moutoa Scheme, Whirokino, Himatangi, Hōkio, Ōhau-Manakau, Foxton East, Koputaroa, Makerua	20-Feb-26	1:00 PM	Te Awahou Nieuwe Stroom, Teal Room, Foxton
RUAPEHU DISTRICT	Ruapehu District Wide, Ohakune, Pakihi, Upper Whanganui River, Whangaehu Mangawhero	23-Feb-26	4:00 PM	The Peaks Motor Inn Conference Centre, Ohakune
RANGITĪKEI DISTRICT	Turakina River, Tutaenui, Rangitikei, Pōrewa Forest Road, Huanui, Makirikiri	26-Feb-26	9:00 AM	Horizons Regional Council Marton Office
LOWER WHANGANUI AREA	Lower Whanganui River, Matarawa, Whangaehu-Mangawhero	26-Feb-26	2:00 PM	Whanganui War Memorial Centre, Pioneer Room

PRESENTATION FORMAT

1. Proposed Regional Scheme Budgets 2026-2027
2. Regional Overview
3. Regional Maintenance and Repairs Summary
4. Overview of Local Schemes
5. Individual Scheme Works
6. Capital programme

PROPOSED REGIONAL SCHEME BUDGETS 2026-2027



horizons.govt.nz

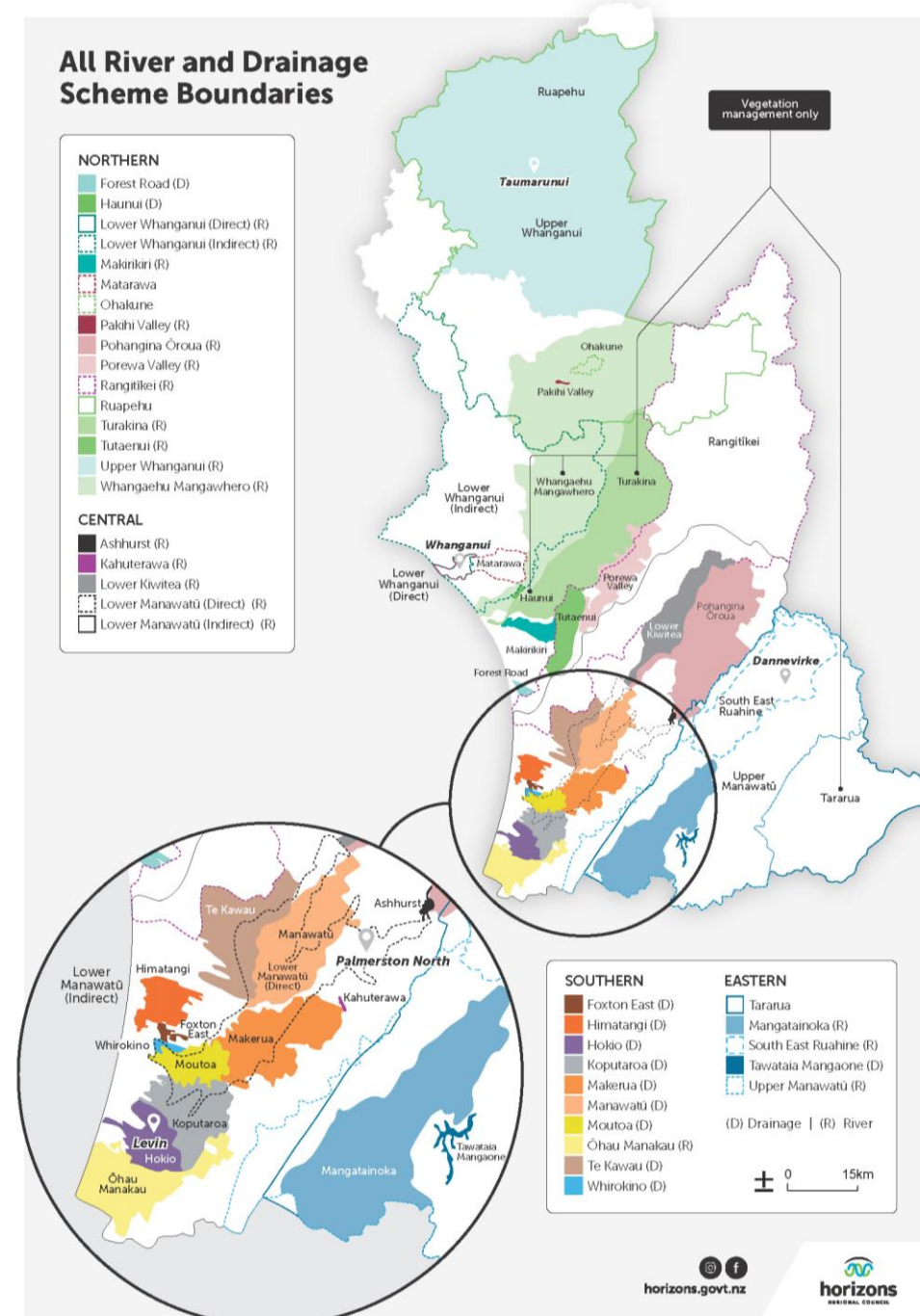
Budget Methodology

Operational budgets

- Starting point being current year budgets with updated insurance savings and lease income projections, govt. co-funding and Council decisions e.g. (Hōkio additional works).
- Updated staffing and internal costs (2 roles removed, staff funding via rates in the year rather than loan funding). Increased Kiwisaver.
- Considered revenue balances, potential to pay off loans, reserve provisions.
- Scheme meetings to provide guidance.
- Numbers include forecasts that may change.

Capital budgets (\$7.11M)

- Provisioned for Te Pūwaha, Feilding, Mangaone.
- Rangiotu gates not provisioned for, however application into government for co-funding.



River management proposed budgets 2026-27

	2025-26	2026-27	Movement (%)	Movement (\$)
RM Schemes Funding				
Targeted (Scheme) Rates	\$ 13,720,246	\$ 13,570,934	-1.1%	-\$ 149,312
General Rates	\$ 3,955,172	\$ 3,909,479	-1.2%	-\$ 45,693
Total RM Schemes	\$ 17,675,418	\$ 17,480,413	-1.1%	-\$ 195,005
R&D General				
General Rates	\$ 1,547,062	\$ 1,660,943	7.4%	\$ 113,881
Total Rates				
Total Rates Funding	\$ 19,222,480	\$ 19,141,356	-0.4%	-\$ 81,124

	2025-26	2026-27	Movement (%)	Movement (\$)
Total Targeted Rates (\$)	\$ 13,720,246	\$ 13,570,934	-1.1%	-\$ 149,312
Total General Rates (\$)	\$ 5,502,234	\$ 5,570,422	1.2%	\$ 68,188
Total Targeted Rates (%)	71.4%	70.9%		
Total General Rates (%)	28.6%	29.1%		

Overall RM rates funding is proposed to reduce by 0.4%

Note: \$2.552M of depreciation is not rated for

Scheme committee feedback is a next step

Rate increases ranked

Scheme rate increases

- 29 Schemes < 5% increase
- 9 of those are a decrease (<0)
- 5 schemes more than 5%
- Makirikiri to rate fund again (reserve funded last 2 years)
- Council decisions (new work) driving Hōkio (31%) & Whanganui (9.3%)
- Dam costs driving Tutaenui (13%), Porewa (10%)
- Lower Manawatū Total (-6.0%), shown in 2 parts in table. Special project (-74%), general (+3.9%)

Schemes	2025/2026 (\$)	2026/27 Proposed (\$)	Difference (\$)	Difference (%)
Makirikiri	\$ 102	\$ 43,753	\$ 43,652	42892.45%
Hōkio	\$ 93,986	\$ 123,213	\$ 29,226	31.10%
Tutaenui	\$ 134,189	\$ 151,761	\$ 17,571	13.09%
Pōrewa Valley	\$ 136,452	\$ 150,175	\$ 13,723	10.06%
Lower Whanganui River	\$ 989,891	\$ 1,081,975	\$ 92,084	9.30%
Himatangi	\$ 32,458	\$ 34,044	\$ 1,586	4.89%
Kahuterawa	\$ 20,377	\$ 21,303	\$ 925	4.54%
Ashhurst Stream	\$ 28,659	\$ 29,769	\$ 1,110	3.87%
Lower Manawatū general (part 1 of 2)	\$ 6,419,093	\$ 6,671,271	\$ 252,178	3.93%
Koputaroa	\$ 362,764	\$ 373,798	\$ 11,033	3.04%
Pohangina-Ōroua	\$ 560,017	\$ 574,876	\$ 14,859	2.65%
Rangitikei River	\$ 1,235,236	\$ 1,261,066	\$ 25,830	2.09%
Whangaehu-Mangawhero	\$ 72,532	\$ 73,734	\$ 1,202	1.66%
Whirokino	\$ 56,329	\$ 57,258	\$ 930	1.65%
Tawataia-Mangaone	\$ 30,715	\$ 31,175	\$ 459	1.50%
Moutoa	\$ 505,429	\$ 512,958	\$ 7,529	1.49%
Te Kawau	\$ 389,897	\$ 395,339	\$ 5,443	1.40%
Ruapehu DC	\$ 313,149	\$ 317,459	\$ 4,310	1.38%
Tararua	\$ 381,295	\$ 386,334	\$ 5,039	1.32%
Ohakune	\$ 79,377	\$ 80,357	\$ 980	1.23%
Turakina	\$ 60,132	\$ 60,858	\$ 726	1.21%
Manawatū Drainage	\$ 1,233,522	\$ 1,246,609	\$ 13,087	1.06%
S E Ruahines	\$ 685,833	\$ 689,769	\$ 3,936	0.57%
Mangatainoka	\$ 639,353	\$ 642,942	\$ 3,589	0.56%
Upper Whanganui	\$ 157,708	\$ 158,457	\$ 749	0.47%
Matarawa	\$ 125,007	\$ 125,396	\$ 389	0.31%
Foxton East	\$ 47,921	\$ 47,720	-\$ 202	-0.42%
Forest Road	\$ 28,461	\$ 28,287	-\$ 174	-0.61%
Haunui	\$ 25,645	\$ 25,407	-\$ 238	-0.93%
Makerua	\$ 847,124	\$ 838,478	-\$ 8,645	-1.02%
Ōhau-Manakau	\$ 497,458	\$ 482,936	-\$ 14,522	-2.92%
Upper Manawatū-Lower Mangahao	\$ 358,472	\$ 339,607	-\$ 18,865	-5.26%
Lower Kiwitea	\$ 171,701	\$ 162,113	-\$ 9,588	-5.58%
Pakihi Valley	\$ 18,988	\$ 16,579	-\$ 2,409	-12.69%
Lower Manawatū Sp Project (part 2 of 2)	\$ 936,146	\$ 243,639	-\$ 692,507	-73.97%
Total RM Schemes	\$ 13,720,246	\$ 13,570,934	-\$ 149,312	-1.09%
Total RM General	\$ 3,955,172	\$ 3,909,479	-\$ 45,693	-1.16%
Total River Management	\$ 17,675,418	\$ 17,480,413	-\$ 195,005	-1.10%

REGIONAL OVERVIEW



horizons.govt.nz

MAINTENANCE / REPAIRS DELIVERY LAST YEAR - TO 30 JUNE 2025

- New maintenance-based programme introduced.
- Settled weather has assisted the years activity. Some of the repairs budget was redirected to maintenance.
- End of year results show 117% of maintenance budget spent, 57% of repairs budget.

Regional summary	Asset quantity	Completed works / checks	Percentage	Notes Some areas maintained more than once
Drains (km)	1,149	1,955	170%	Mostly spray, some mechanical
Floodgates (#)	755	1,114	148%	Maintenance and/or checks
Stopbanks (km)	506	982	194%	Mostly mowing
River channel (km)		454		Includes aerial spraying, gravel management
River edge protection (km)	614	118	19%	Willow maintenance
Dams (#)	54	291	539%	Maintenance and/or checks
Pump stations (#)	24	69	288%	Maintenance and/or checks
Weirs (#)	77	5	6%	Maintenance
Amenity (#)	20	2	10%	Maintenance
Flood barrier (#)	10	4	40%	Maintenance and/or checks

REGIONAL MAINTENANCE AND REPAIRS SUMMARY – 34 SCHEMES

- Results July to December 2025 shown below.
- Progress results to date show 42% of maintenance budget spent, 29% of repairs budget.

Regional summary	Asset quantity	Completed works / checks	Percentage	Notes Some areas maintained more than once
Drains (km)	1,149	309	27%	Mostly spray, some mechanical
Floodgates (#)	755	553	73%	Maintenance and/or checks
Stopbanks (km)	506	550	109%	Mostly mowing
River channel (km)		164		Includes aerial spraying, gravel management
River edge protection (km)	614	15	2%	Willow maintenance
Dams (#)	54	169	313%	Maintenance and/or checks
Pump stations (#)	24	44	183%	Maintenance and/or checks
Weirs (#)	77	2	3%	Maintenance
Amenity (#)	20		0%	Maintenance
Flood barrier (#)	10		0%	Maintenance and/or checks

REGIONAL CAPITAL PROGRAMME UPDATE

2024-25 (last year to 30 June)

- Delivered approx. \$19M, nearly double the previous year \$10.5M.
- Central Government co-funded Capital Projects were completed. Approx \$9M of co-funding.
- Flood vulnerability assessment commissioned to inform future work.

2025-26 (this year)

- Some residual work from Government co-funded projects:
 - Moutoa Wetgates (Tidal Gates), Belvedere Crescent, Pump stations (Comms and alt. power upgrades).
- Te Pūwaha (Whanganui):
 - Provincial Growth Fund project complete.
 - New funding secured (\$7.875M toward \$13.125M project). Procurement & consenting underway.
 - Feilding / Te Arakura – progressing Council item Feb. 2026.
 - Mangaone (PN) – progressing - Council item April 2026.

2026-27 (next year)

Works provided for in budget Te Pūwaha (\$3.46M), Feilding (\$2.55M), Mangaone (\$1.1M).

Rangiotu gates not currently included. However, application to government for co-funding.

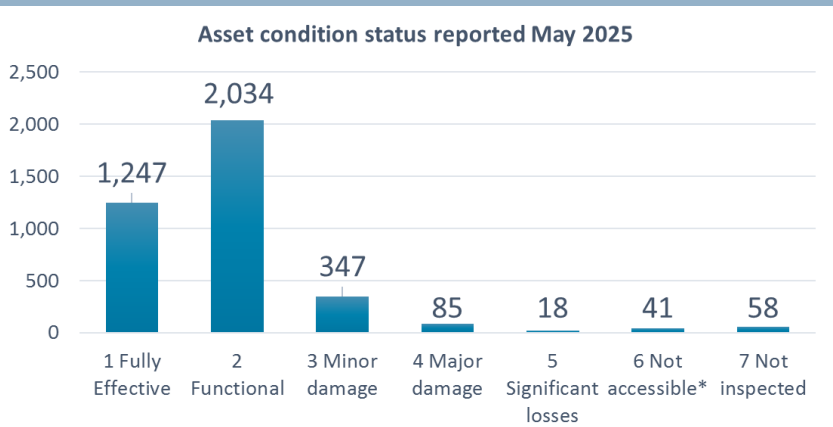
ASSET CONDITION AND ASSET DEFECTS - AS AT MAY 2025

Regional Overview

- Over 3,800 assets valued at over \$1.2 Billion.
- Maximum insurance claim per event is up to \$0.1 Billion.
- Assets insured total \$0.811 Billion.
- Single Asset Management Plan produced to replace 27 plans (more efficient, to be updated annually).

Regional Asset Condition

- 103 (5%) of assets have major or significant damage.
- A further 347 (9%) have minor damage.



Category	Count
1 Fully Effective	1,247
2 Functional	2,034
3 Minor damage	347
4 Major damage	85
5 Significant losses	18
6 Not accessible*	41
7 Not inspected	58

Regional Asset Defects

- 477 assets at least one of the 1,104 known defects.
- Capacity and information systems are limiting defects management. The Annual Plan has prioritised this.

Defects reporting by area	Number of assets (total)	Number of assets with active defects	Number of active defects
Eastern	812	70	105
Northern	562	42	77
Southern	1,244	92	197
Central	1,210	273	725
Total	3,828	477	1,104

Example: Central Schemes Asset Defects

- There are 1,210 assets.
- Of which 273 (22%) have at least one known defect.
- There are 725 known defects.

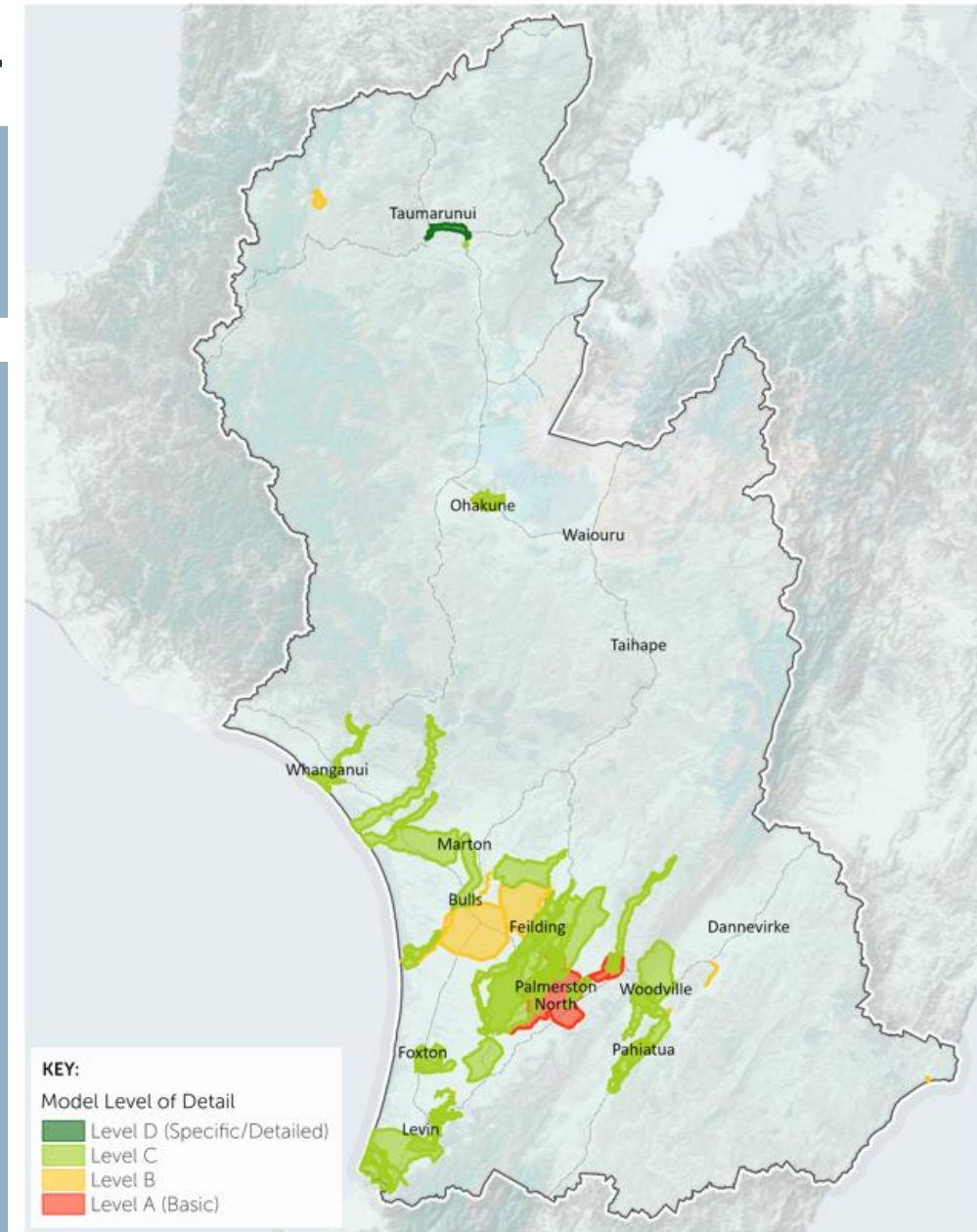
* May 2025 reporting. <https://www.horizons.govt.nz/HRC/media/Media/Agenda-Reports/Integrated-Catchment-Committee-Folder/Integrated-Catchment-Committee-2025-14-05/2559%20Catchment%20Operations%20Group%20Regional%20Summary%20Report.pdf> Pages 63 to 65

REGIONAL FLOOD VULNERABILITY ASSESSMENT

Has produced regional comparative models of flood vulnerability, previously there were 47 localised historic models with various levels of detail (see map).

List of reports produced

- Horizons flood modelling and mapping guideline report.
- Flood modelling compilation and review, current state analysis report and Horizons modelling review.
- Flood protection assets review, asset condition and problem definition report.
- Flood frequency analysis report.
- Regional flood modelling for Horizons Flood Vulnerability Assessment report, regional model outputs
- Flood vulnerability assessment report that includes regional, district, 52 towns and settlements summary.
- Lower Manawatū model report and model outputs
- Moutoa Gates - model build report to support 2025-operational upgrades.



Indicative Flood Model Levels and Domains (Approximation Only)

(Partial list, some models not shown)

0 10 20 40 km
1:1,086,170



EXCLUSION OF LIABILITY ARISING FROM SUPPLY OF INFORMATION Horizons Regional Council endeavours to provide useful and accurate information. Horizons Regional Council shall not, however be liable whether in contract, tort, equity or otherwise, for any loss or damage of any type (including consequential losses) arising directly or indirectly from the inadequacy, inaccuracy or any other deficiency in information supplied irrespective of the cause. Use of information supplied is entirely at the risk of the recipient and shall be deemed to be acceptance of this liability exclusion.
Contains Crown Copyright Data, Interpretation & Design Team - 12/02/2026

LOCAL SCHEMES



[horizons.govt.nz](https://www.horizons.govt.nz)

OVERVIEW OF LOCAL SCHEMES

Current context

Pohangina - Ōroua

- Scheme financially constrained.
- Consenting adding costs to the scheme.
- Potential for public hearings for consents.
- River management lines work underway.
- Saddle Road gravel extraction on hold (permissions, questions regarding effectiveness of the work).

Kiwitea

- Gravel consents being aligned into Ōroua consents.
- Reid Line project will need to consider this scheme.

Ashhurst

- Significant reduction in rates in 2024-25.
- Reduced ability to undertake work.
- Issues around the level of service that the Ashhurst stopbanks have been discussed. No plans at this stage to raise any stopbanks.

The year ahead

Priorities for the year will include:

- Implementing a further year of the maintenance based programme;
- Operating within regulatory frameworks;
- Progressing consenting requirements;
- Using asset information to prioritise repairs, upgrading tracking of defects;
- Reviewing the findings of the flood vulnerability assessment and assessing next steps;
- Responding to any high flow events as they occur;
- Emergency management/ response training; and
- Implementing smaller capital programme - Te Pūwaha (Whanganui), Te Arakura & Reid Line (Feilding) and Mangaone Stream (Palmerston North).

POHANGINA-ŌROUA SCHEME



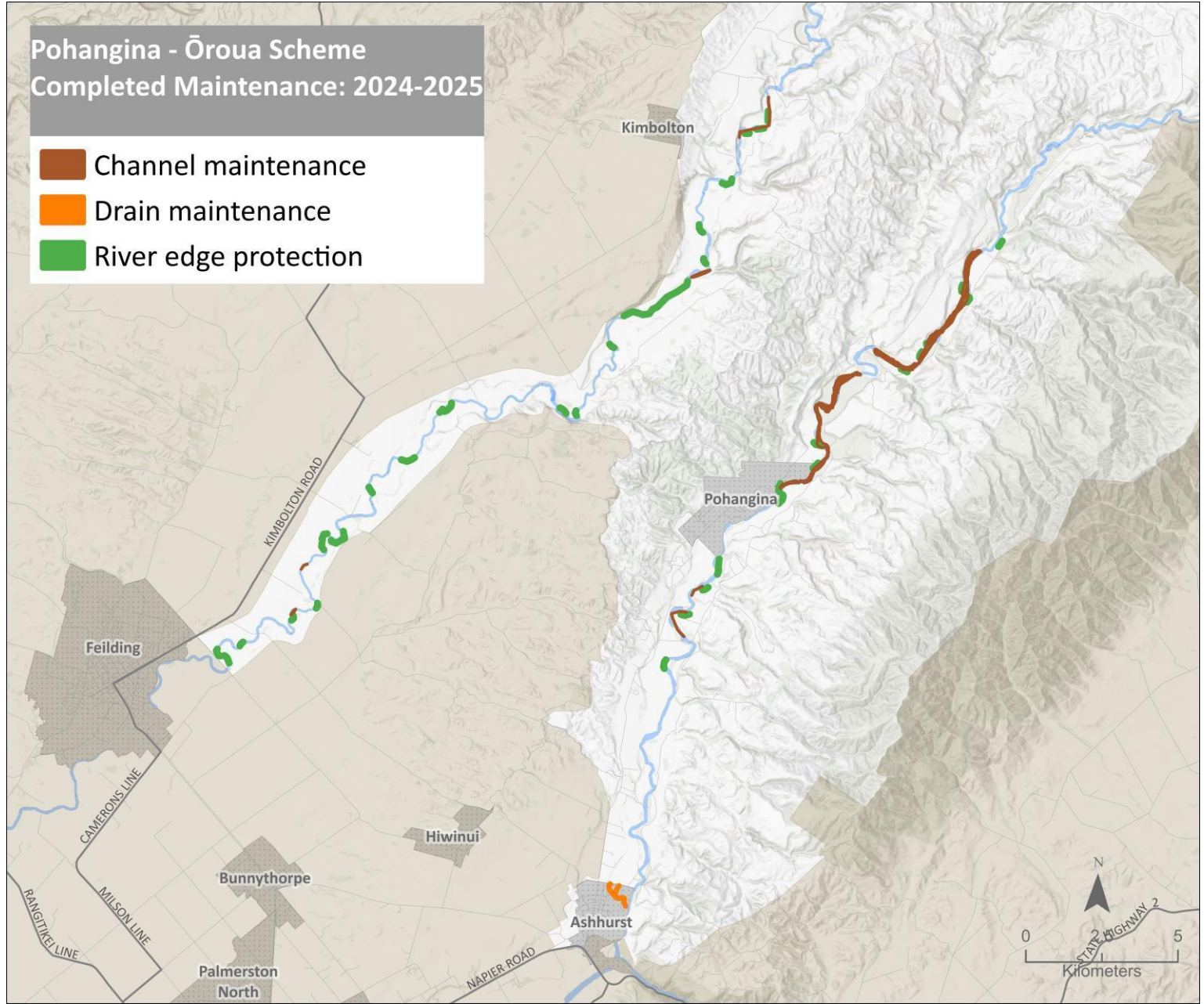
horizons.govt.nz

POHANGINA – ŌROUA SCHEME WORKS 2024-25 (Last year)

Budget expenditure:

- Maintenance approx. 76%; and
- Repairs approx. 196%.

Scheme maintenance	Asset quantity	Works / checks	Percent
Drains (km)	6.8	1.4	21%
Floodgates (#)			
Stopbanks (km)			
River channel (km)		77.8	
River edge protection (km)	71.6	8.8	12%
Dams (#)			
Pump stations (#)			
Weirs (#)			
Amenity (#)			
Flood barrier (#)			



WORKS 2025-26 - POHANGINA-ŌROUA

Works completed

- Erosion on the channel edge repair works completed at 2 sites, one each on the Pohangina and Ōroua.
- Machine cleaned drain below Ashhurst.

Planned works ahead

- Aerial spray of gravel beaches in March, weather dependent.
- Some willow layering at various sites are planned as part of maintenance program.
- A third channel edge repair plan is being finalised and is likely to use the remaining repair budget.

Other matters

Resource consents being worked on:

- Pohangina and Ōroua aerial discharge (beach spraying). Application submitted, further info being worked on;
- Pohangina global gravel extraction. Application submitted, further info being worked on;
- Ōroua (including Kiwitea) global gravel management resource consent application in draft form.

	2025-26	2026-27	Movement	
Expenditure Schemes				
Maintenance	\$279,980	\$279,998	0.0%	
Repairs	\$133,284	\$133,284	0.0%	
Internal Cost (Staff, vehicle, etc)	\$120,105	\$135,695	13.0%	
Insurance	\$1,517	\$1,393	-8.1%	
Reserve Contributions	\$60,000	\$60,000	0.0%	
External Cost (rates etc)	\$-	\$-	0.0%	
Loan Funding	\$46,913	\$46,287	-1.3%	
Depreciation Funded	\$-	\$-		
Sub total - Operational expenditure	\$641,799	\$656,658	2.3%	
Capex	\$-	\$-	0.0%	
Total Expenditure Schemes	\$641,799	\$656,658	2.3%	
Funding				
Scheme Rates	\$448,014	\$459,900	2.7%	
General Rates	\$112,003	\$114,975	2.7%	
Total Rates	\$560,017	\$574,876	2.7%	
Capital Grant Funding	\$-	\$-	0.0%	
Loan Drawdowns	\$-	\$-	0.0%	
Reserve Drawdowns (Targeted + General)	\$-	\$-	0.0%	
Other (Leases and Rental)	\$81,782	\$81,782	0.0%	
Total Revenue	\$641,799	\$656,658	2.3%	
Reserves	Closing Balance 30-6-25	Closing Balance 30-6-26	Closing Balance 30-6-27	
Estimated EM Reserve Target		17%	\$ 1,140,000	
Estimated EM Reserve Balance (Targeted Only)	\$ 91,647	\$143,359	\$ 196,806	
Difference			-\$ 943,194	
Renewal Reserve Balance	-\$ 33,821	-\$35,191	-\$ 36,528	
Loans	Closing Balance 30-6-25	Closing Balance 30-6-26	Closing Balance 30-6-27	Remaining Loan Period 30-6-27
Loan Balances	\$433,967	\$405,497	\$375,430	11

Pohangina - Ōroua



Rates

Up 2.7%

Drivers

Staff costs

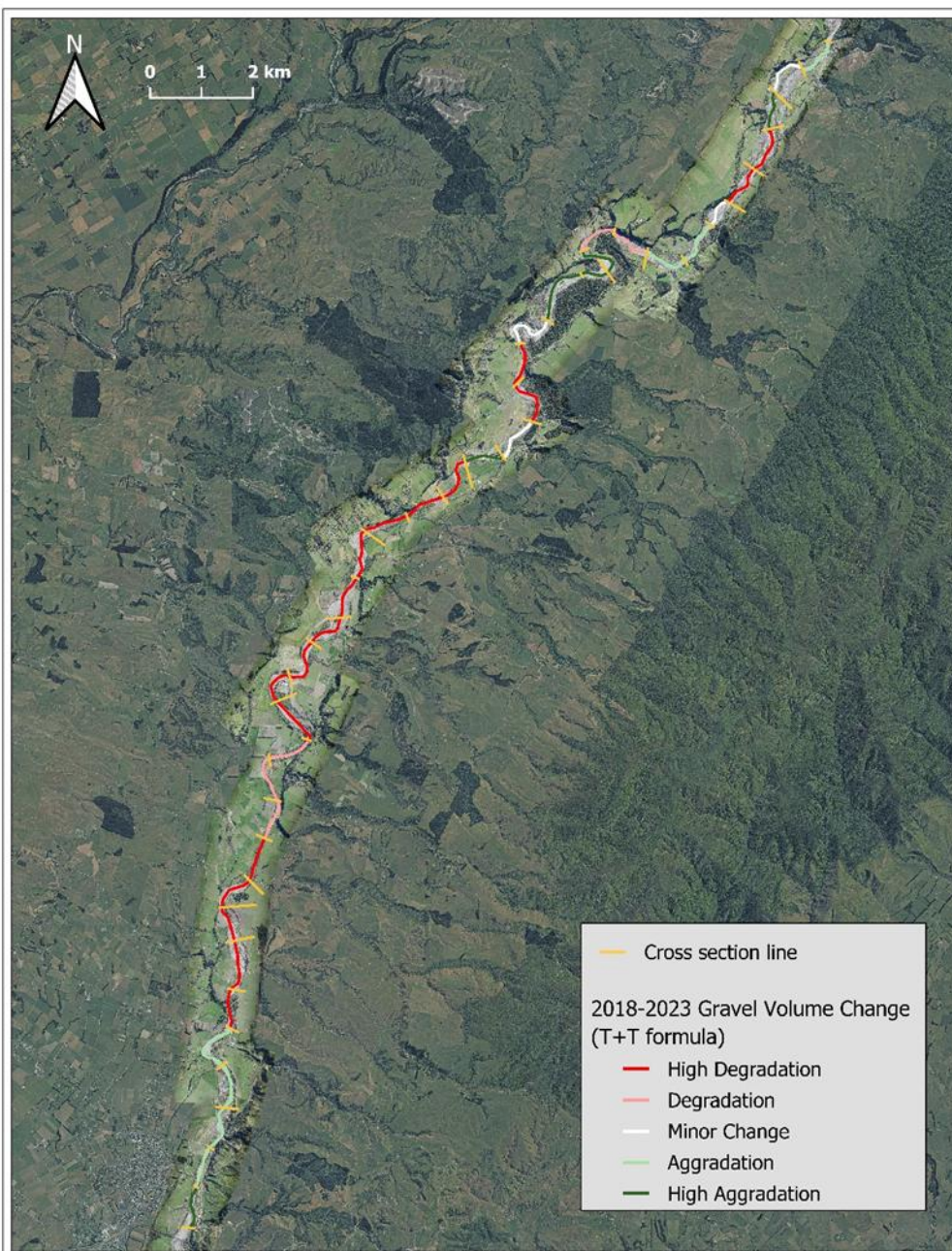
Reserves

11% of target. Rebalancing required (some negatives)

Of note

Scheme has landowner contributions for some works. Challenging scheme where demand outstrips funding available.

Maps of gravel volume change over time, sections showing degradation.



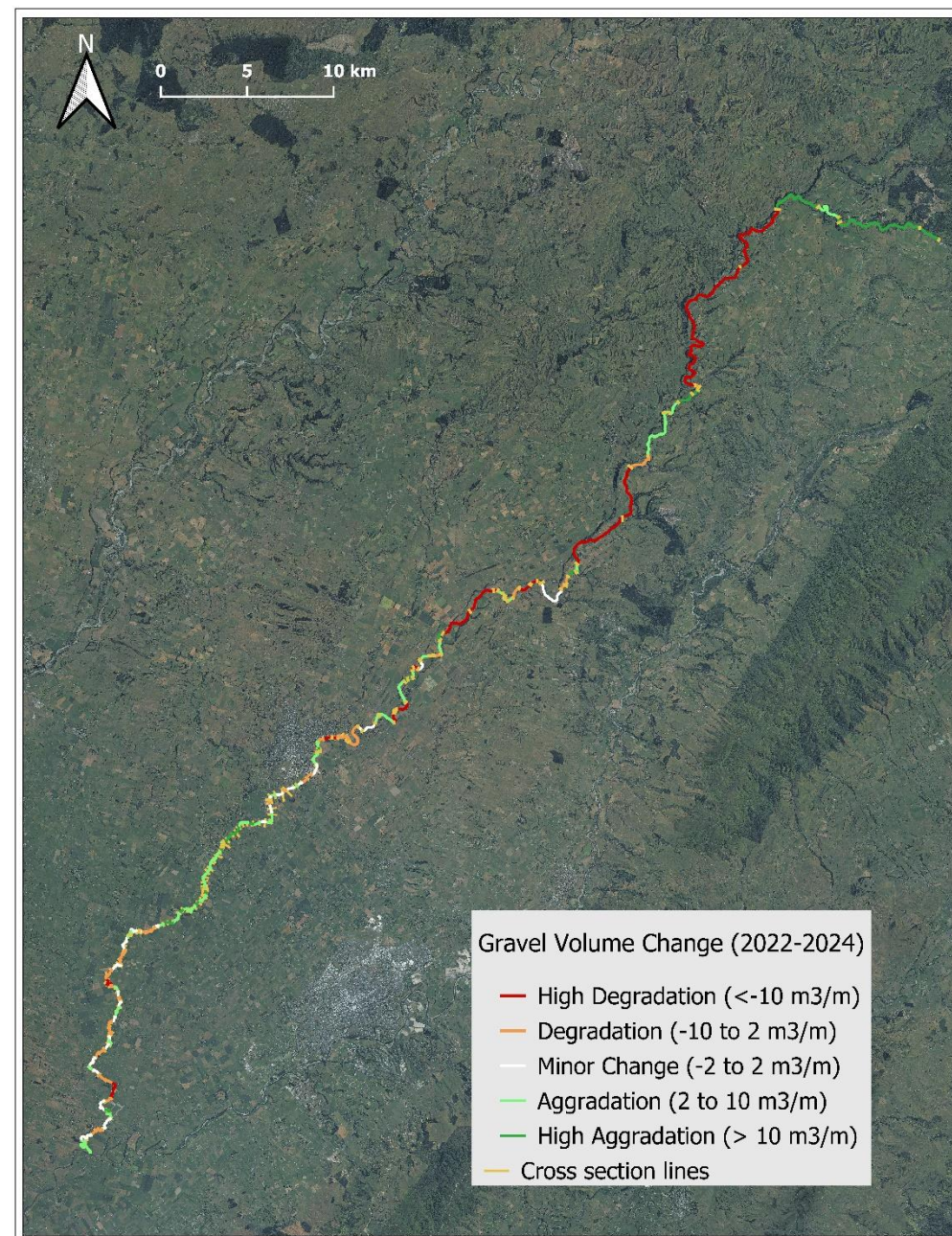
Pohangina River
Gravel Volume Change Map (2023 aerial overlaid on top of 2021 aerial)

Prepared by: B Pancho
Date: 10/06/2025

Contains Crown Copyright Data



EXCLUSION OF LIABILITY ARISING FROM SUPPLY OF INFORMATION: Horizons Regional Council endeavours to provide useful and accurate information. Horizons Regional Council shall not, however be liable whether in contract, tort, equity or otherwise, for any loss or damage of any type (including consequential losses) arising directly or indirectly from the inadequacy, inaccuracy or any other deficiency in information supplied, irrespective of the cause. Use of information supplied is entirely at the risk of the recipient and shall be deemed to be acceptance of this liability exclusion.



Oroua River
Change in Gravel Volume Map

Prepared by: B Pancho
Date: 23/06/2025

Contains Crown Copyright Data



EXCLUSION OF LIABILITY ARISING FROM SUPPLY OF INFORMATION: Horizons Regional Council endeavours to provide useful and accurate information. Horizons Regional Council shall not, however be liable whether in contract, tort, equity or otherwise, for any loss or damage of any type (including consequential losses) arising directly or indirectly from the inadequacy, inaccuracy or any other deficiency in information supplied, irrespective of the cause. Use of information supplied is entirely at the risk of the recipient and shall be deemed to be acceptance of this liability exclusion.

LOWER KIWITEA SCHEME



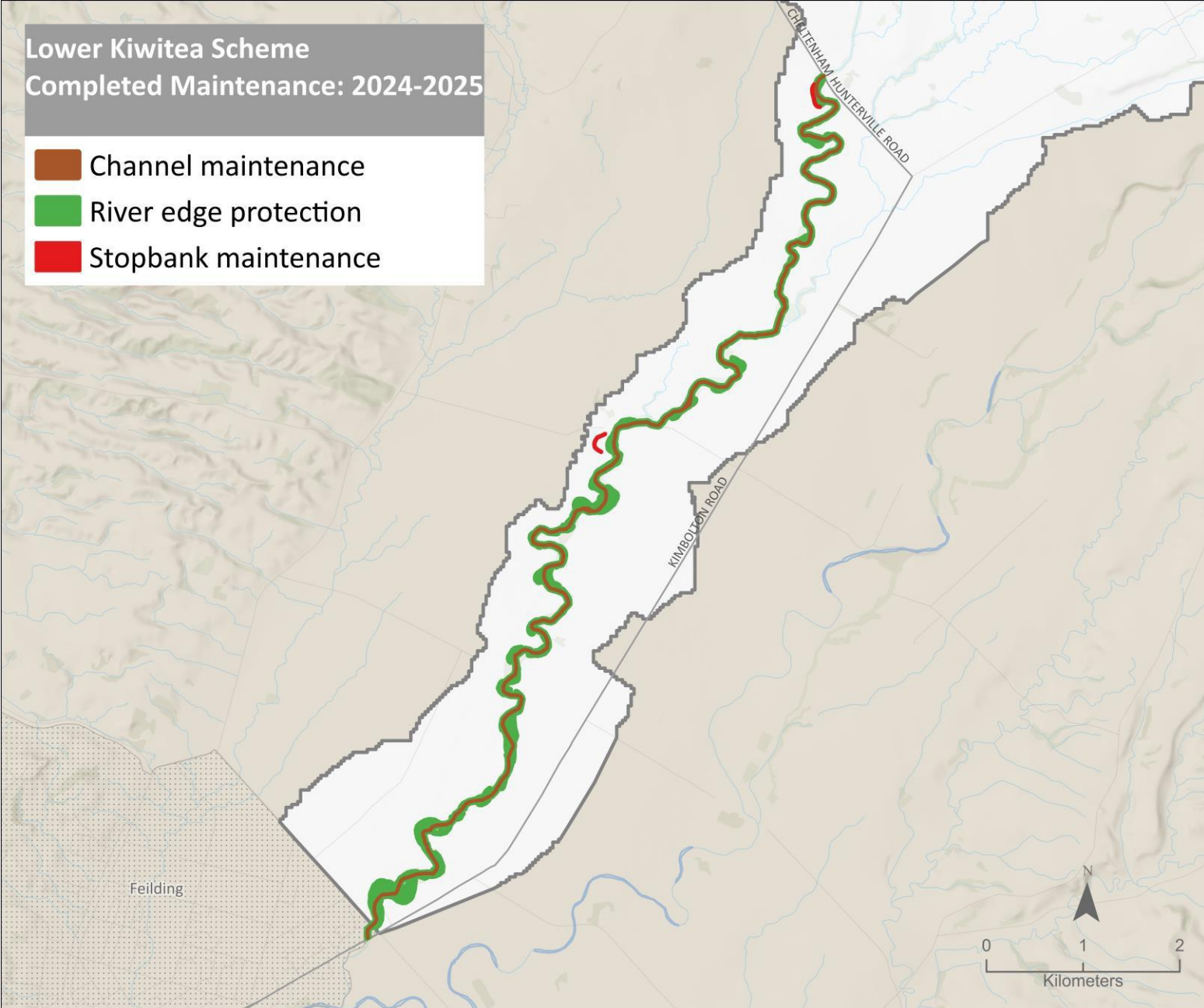
horizons.govt.nz

LOWER KIWITEA SCHEME WORKS 2024-25 (Last year)

Budget expenditure:

- Maintenance approx. 144%;
- Repairs approx. 33%; and
- Some repair budget reallocated to further maintenance.

Scheme maintenance	Asset quantity	Works / checks	Percent
Drains (km)			
Floodgates (#)			
Stopbanks (km)	0.6	0.6	100%
River channel (km)		22.5	
River edge protection (km)	18.5	30	162%
Dams (#)			
Pump stations (#)			
Weirs (#)			
Amenity (#)			
Flood barrier (#)			



WORKS 2025-26 – LOWER KIWITEA

Works underway

- Contractors due to start in the next week or two on the annual edge maintenance program.
- Work undertaken in November to remove some wattle vegetation from channel.

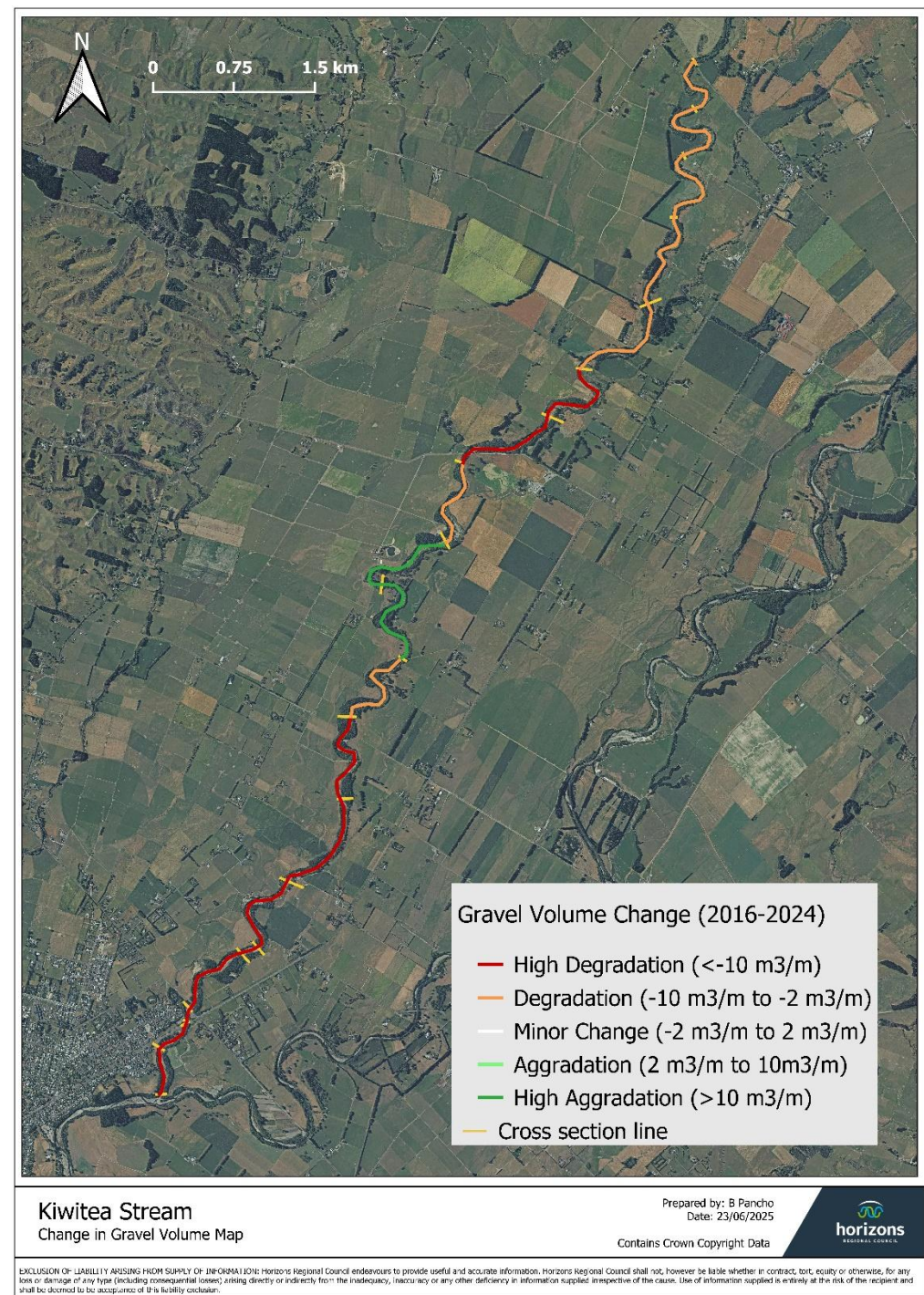
Works planned

- Restrictions of time of year that works can be undertaken, wet weather has limited windows for works.

Other matters

Resource consents being worked on:

- Kiwitea global gravel management consent (including extraction), to be merged with Ōroua catchment global consent. Application is in draft form.





Lower Kiwitea

Rates
Down 5.6%

Drivers
Loan repaid
No loan payment required

Reserves
Target achieved

	2025-26	2026-27	Movement	
Expenditure Schemes				
Maintenance	\$82,353	\$84,496	2.60%	
Repairs	\$36,012	\$36,654	1.80%	
Internal Cost (Staff, vehicle, etc)	\$32,824	\$38,215	16.40%	
Insurance	\$-	\$-	0.00%	
Reserve Contributions	\$15,000	\$15,000	0.00%	
External Cost (rates etc)	\$-	\$-	0.00%	
Loan Funding	\$17,764	\$-	-100.00%	
Depreciation Funded	\$-	\$-		
Sub total - Operational expenditure	\$183,953	\$174,365	-5.20%	
Capex	\$-	\$-	0%	
Total Expenditure Schemes	\$183,953	\$174,365	-5.2%	
Funding				
Scheme Rates	\$137,361	\$129,691	-5.60%	
General Rates	\$34,340	\$32,423	-5.60%	
Total Rates	\$171,701	\$162,113	-5.60%	
Capital Grant Funding	\$-	\$-	0.00%	
Loan Drawdowns	\$-	\$-	0.00%	
Reserve Drawdowns (Targeted + General)	\$-	\$-	0.00%	
Other (Leases and Rental)	\$12,252	\$12,252	0.00%	
Total Revenue	\$183,953	\$174,365	-5.20%	
Reserves	Closing Balance 30-6-25	Closing Balance 30-6-26	Closing Balance 30-6-27	
Estimated EM Reserve Target		100.11%	\$ 520,000	
Estimated EM Reserve Balance (Targeted Only)	\$ 459,356	\$ 489,960	\$ 520,578	
Difference			\$ 578	
Renewal Reserve Balance	\$ -	\$ -	\$ -	
Loans	Closing Balance 30-6-25	Closing Balance 30-6-26	Closing Balance 30-6-27	Remaining Loan Period 30-6-27
Loan Balances	\$17,040	\$-	\$-	0

ASHHURST



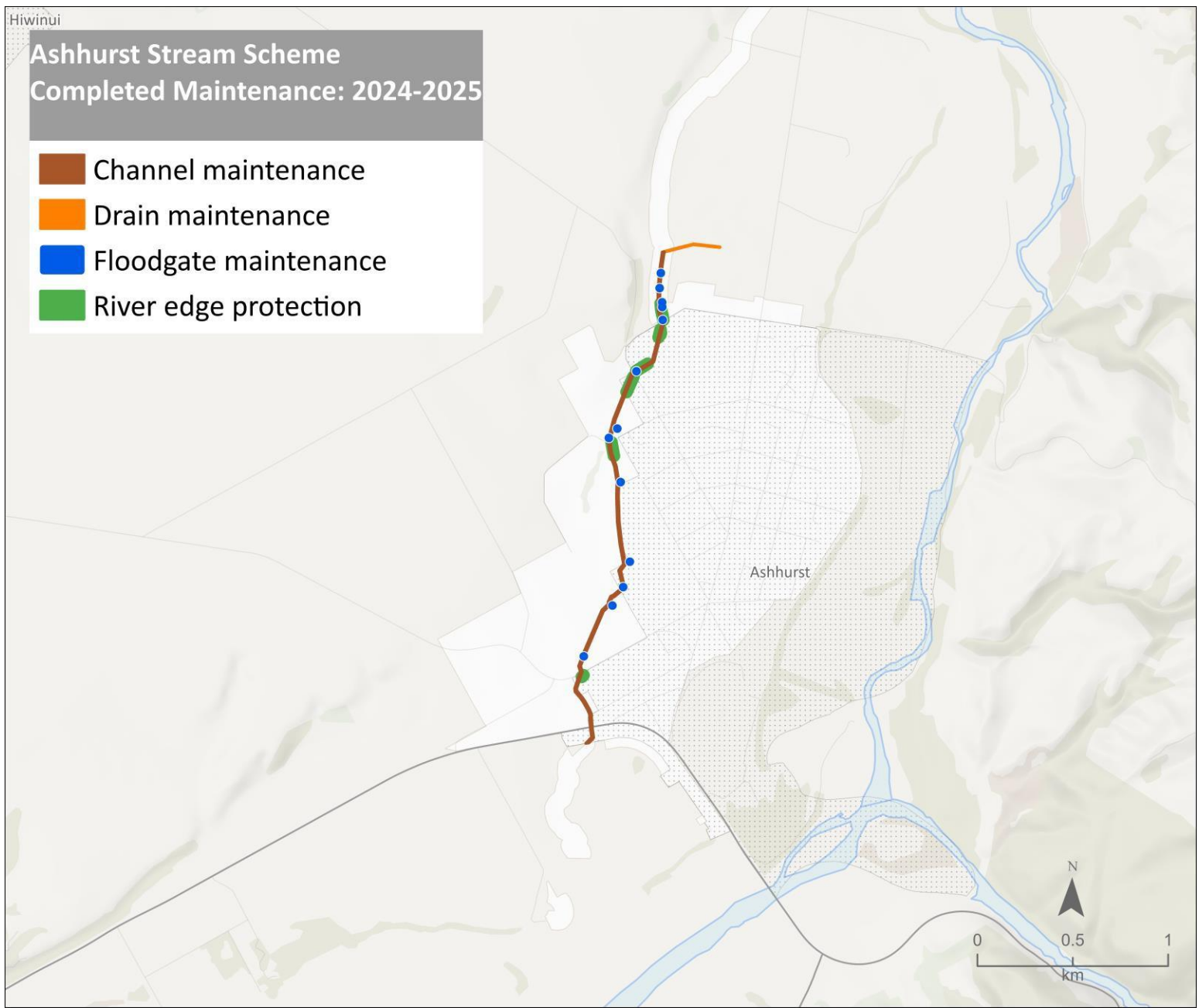
horizons.govt.nz

ASHHURST SCHEME WORKS 2024-25 (Last year)

Budget expenditure:

- Maintenance approx. 106%;
- Repairs approx. 0%; and
- Some repair budget reallocated to further maintenance.

Scheme maintenance	Asset quantity	Works / checks	Percent
Drains (km)	6.3	0.3	5%
Floodgates (#)	13	13	100%
Stopbanks (km)	2.7	0	0%
River channel (km)		2.8	
River edge protection (km)	0	0.4	NA
Dams (#)			
Pump stations (#)			
Weirs (#)	9	0	0%
Amenity (#)			
Flood barrier (#)			



WORKS 2025-26 - ASHHURST

Works underway

- Annual channel maintenance work is due to commence over the next couple of months. with a focus on vegetation management within the channel, weather dependent.
- Floodgate inspection and maintenance carried out.

Planned works ahead

- Subject to funding availability, repair work will be carried out on one of the rock weirs before the end of the year.

Other matters

- Several meetings have been held with developers who are looking at subdivision within Ashhurst.

Challenges

- Further rock weirs that need repairs, funding restrictions.

	2025-26	2026-27	Movement	
Expenditure Schemes				
Maintenance	\$15,315	\$ 14,621	-4.5%	
Repairs	\$7,769	\$7,930	2.1%	
Internal Cost (Staff, vehicle, etc)	\$7,876	\$8,736	10.9%	
Insurance	\$1,698	\$1,482	-12.8%	
Reserve Contributions	\$-	\$-	0.0%	
External Cost (rates etc)	\$-	\$-	0.0%	
Loan Funding	\$-	\$-	0.0%	
Depreciation Funded	\$-	\$-		
Sub total - Operational expenditure	\$32,659	\$32,769	0.0%	
Capex	\$-	\$-	0.0%	
Total Expenditure Schemes	\$32,659	\$32,769	0.3%	
Funding				
Scheme Rates	\$22,927	\$23,815	3.9%	
General Rates	\$5,732	\$5,954	3.9%	
Total Rates	\$28,659	\$29,769	3.9%	
Capital Grant Funding	\$-	\$-	0.0%	
Loan Drawdowns	\$-	\$-	0.0%	
Reserve Drawdowns (Targeted + General)	\$4,000	\$3,000	-25.0%	
Other (Leases and Rental)	\$-	\$-	0.0%	
Total Revenue	\$32,659	\$32,769	0.3%	
Reserves	Closing Balance 30-6-25	Closing Balance 30-6-26	Closing Balance 30-6-27	
Estimated EM Reserve Target		1282%	\$ 6,000	
Estimated EM Reserve Balance (Targeted Only)	\$ 82,061	\$ 82,184	\$ 82,907	
Difference			\$ 76,907	
Renewal Reserve Balance	\$ 2,100	\$ 2,155	\$ 2,237	
Loans	Closing Balance 30-6-25	Closing Balance 30-6-26	Closing Balance 30-6-27	Remaining Loan Period 30-6-27
Loan Balances	\$-	\$-	\$-	0

Ashhurst

Rates

Up 3.9%

Drivers

Using reserves in 2026-27

Reserves

Over \$83k, target \$6,000

Of note

Small scheme, large reserves compared to target
Strong request for flood protection upgrades in area



CAPITAL PROGRAMME



horizons.govt.nz

BACKGROUND – Feilding Flood history and response

Year of Event	Response
2004	Raising Ōroua River Stopbanks to 100-year Level of Service (LoS) and construction of Makino Floodgates (2009).
2015	Work started to upgrade Reid Line spillway to operate spillway more often this included a commitment to land purchases.
2021, 2022, and 2023	Manawatū District Council committed to stormwater upgrades. Investigation into increasing the spillway capacity to 500-year LoS started.



POSSIBLE GOVERNMENT CO-FUNDING

- In September 2025, Council approved submitting a project with a total budget of \$20M for consideration of Government Funding seeking a 60% (\$12M) government co-funding share. Of this, \$15M was for Horizons led work and \$5M for MDC led stormwater upgrades.
- This application was assessed nationally through a Regional Council Sector collaborative process and the Reid Line Spillway component (\$15M) of the submission was selected as one of the eligible projects. The Feilding project ranked 6th, 7th and 8th out of 28 nationwide projects on each of 3 different measures.
- This application included works to increase the flood protection along the Reid Line Spillway to a 1 in 500-year LoS (including Climate Change and 600 mm freeboard).
- Formal announcements around the funding approval is yet to be made, and the expected timeframe remains uncertain.

FEILDING FLOOD PROTECTION UPGRADES - COUNCIL RESOLUTION

During the Integrated Catchment Committee held on 11 February 2026, Council approved the following recommendations:

- To proceed with a detailed design of the Reid Line Spillway to a 0.2% AEP (1 in 500-year ARI) LoS including climate change and a 600 mm freeboard.
- Continue discussions with landowners in the Reid Line Spillway, including regarding potential land purchases.
- Investigate and implement options to address issues related to obstructions within the Reid Line Spillway (hedge rows, trees, fences, etc).
- To investigate and obtain cost options to improve capacity and resilience in the urban reach of the Makino Stream, including implementing options to improve asset condition.
- Investigate and obtain cost options to upgrade the Kiwitea and Ōroua stopbanks to increase flood protection for Feilding including up to a 0.2% AEP (1 in 500-year ARI) LoS including climate change and freeboard.



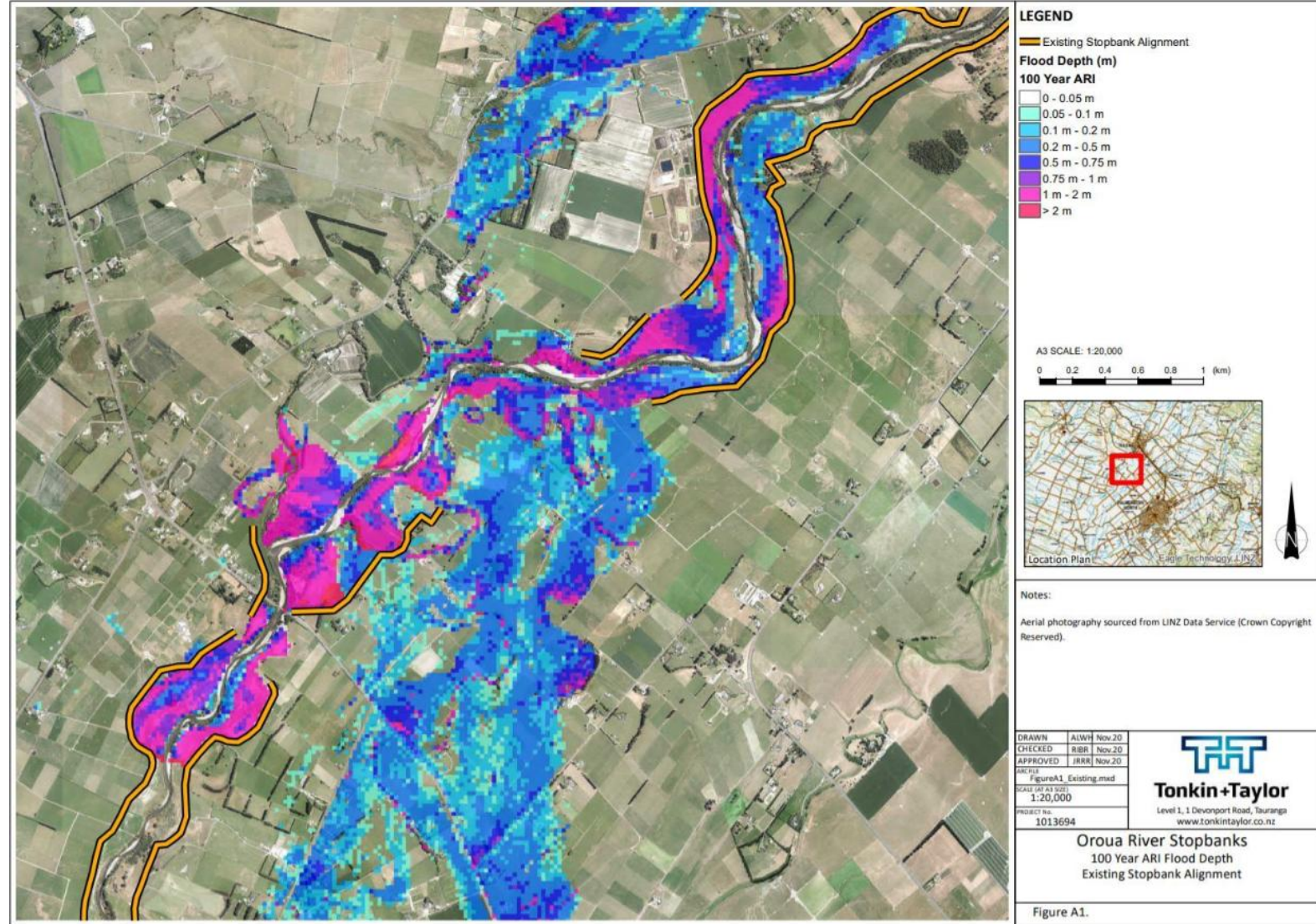
Reid Line Spillway Flood extents for 1 in 200-year (blue) and 1 in 500-year (orange) event (including climate change)



horizons.govt.nz

FEILDING FLOOD PROTECTION – Te Arakura Stopbank

- Work to finalise the approximate 2km gap in the Te Arakura Road stopbank along the Ōroua River has restarted in 2025 and a project team has been established to lead this out.
- While Te Arakura stopbank project was not included in the funding application to Central Government, allocations for this work has been made in Horizons' Long-term Plan.
- Investigation work is ongoing, and landowner/ stakeholder engagement is expected to start this calendar year.



horizons.govt.nz

MANGAONE STREAM FLOOD RESILIENCE UPGRADE RECENTLY COMPLETED PROJECTS – TREMAINE AVENUE



Approximately 174m of secant pile wall was constructed along the Mangaone Stream, near Tremain Avenue, to replace deteriorated gabion baskets.



horizons.govt.nz

MANGAONE STREAM FLOOD RESILIENCE UPGRADE RECENTLY COMPLETED PROJECTS - BELVEDERE CRESCENT



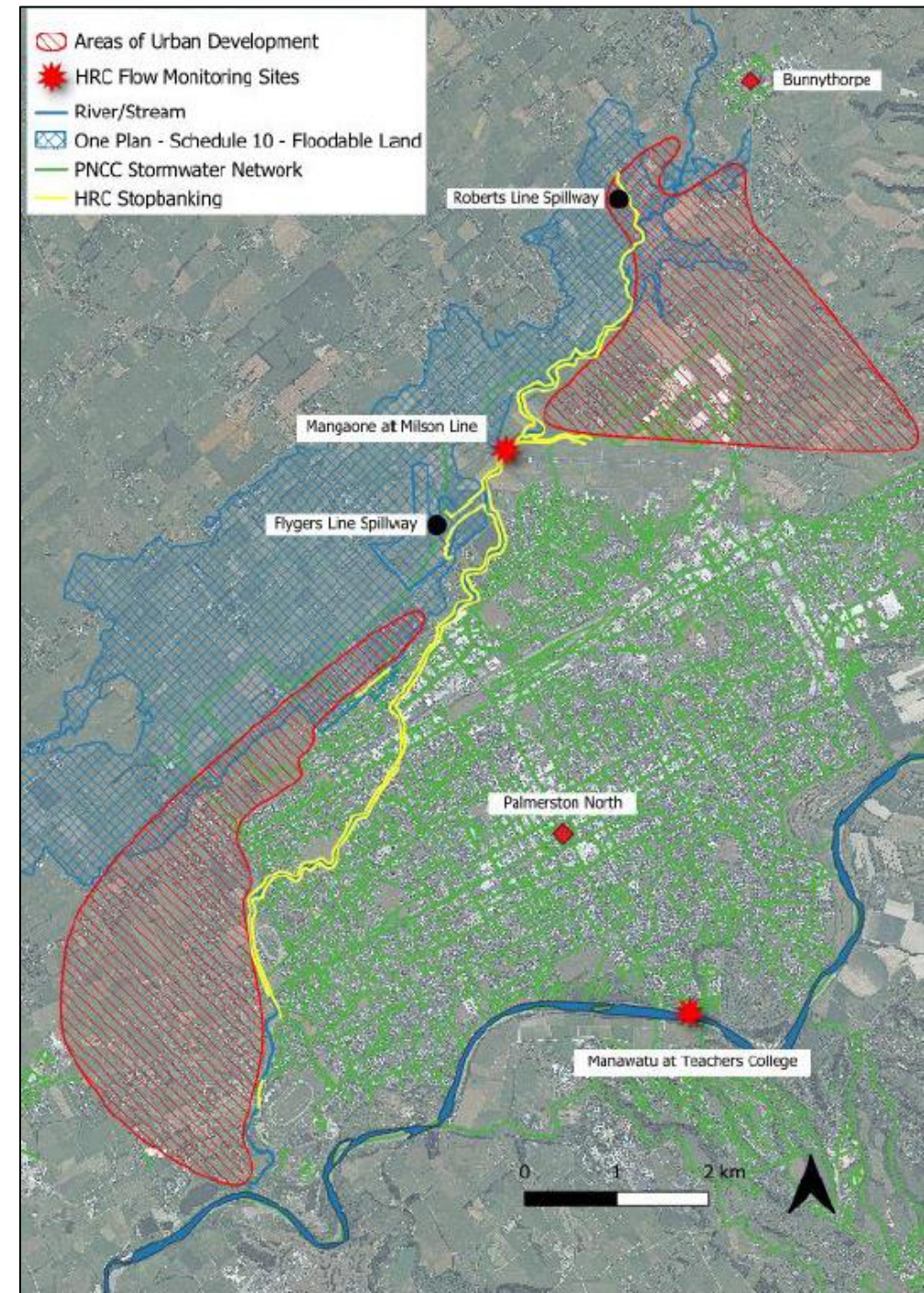
Approximately 60m of stopbank along the Mangaone Stream was renewed (along with ancillary retaining walls).



[horizons.govt.nz](https://www.horizons.govt.nz)

MANGAONE STREAM FLOOD RESILIENCE UPGRADE INVESTIGATION

- Investigation into the Level of Service provided by the banks of the Mangaone Stream is currently underway.
- An item will be presented to Council in May/June 2026 to seek Council's guidance on the Level of Service to be provided by the Mangaone Stream stopbanks and seek approval to continue investigation into the resilience/ capacity of the flood protection infrastructure along the stopbank.





horizons

REGIONAL COUNCIL



For more information visit www.horizons.govt.nz
or freephone Horizons on **0508 800 800**