

Photo:
Reid Line spillway
gates, Feilding.



MANAWATŪ DISTRICT SCHEMES

3RD JULY 2025

VENUE: POHANGINA HALL

MANAWATŪ DISTRICT SCHEMES

Pohangina-Ōroua

Lower Kiwitea

Ashhurst

PRESENTATION FORMAT

Regional overview

1. New maintenance programme results
2. Works reporting – local schemes combined & individually
3. Capital works – local examples
4. Capital works – regional overview
5. Asset Management – insurance, known asset defects
6. Regional flood vulnerability assessment
7. Regulatory matters – consenting and compliance

Local schemes – combined summary

8. Local schemes finance summary – rates, loans, reserves
9. Rates increases
10. Local schemes - current context and the year ahead
11. Case study – river management lines
12. Case study – gravel management consents
13. Presentation summary/ discussion
14. Small group discussion – individual schemes

REGIONAL MAINTENANCE AND REPAIRS SUMMARY – 34 SCHEMES

- New maintenance based programme introduced.
- Settled weather has assisted the years activity.
- Some of the repairs budget has been redirected to maintenance.
- Preliminary results show 103% of maintenance budget spent, 52% of repairs budget.

Regional summary	Asset quantity	Works / checks	Percentage	Notes Some areas maintained more than once
Drains (km)	1,149	1,955	170%	Mostly spray, some mechanical
Floodgates (#)	755	1,114	148%	Maintenance and/or checks
Stopbanks (km)	506	982	194%	Mostly mowing
River channel (km)		454		Includes aerial spraying, gravel management
River edge protection (km)	614	118	19%	Willow maintenance
Dams (#)	54	291	539%	Maintenance and/or checks
Pump stations (#)	24	69	288%	Maintenance and/or checks
Weirs (#)	77	5	6%	Maintenance
Amenity (#)	20	2	10%	Maintenance
Flood barrier (#)	10	4	40%	Maintenance and/or checks

MANAWATŪ SCHEMES - MAINTENANCE AND REPAIRS SUMMARY 2024-25

- New maintenance based programme introduced. Settled weather has also assisted the years activity.
- Across the 3 schemes:
 - 93% of the maintenance budget spent; and
 - 143% of the repairs budget (as at early June). Note some reallocation to maintenance.
- Individual scheme results, including maintenance and repair budget expenditure, provided in later slides.

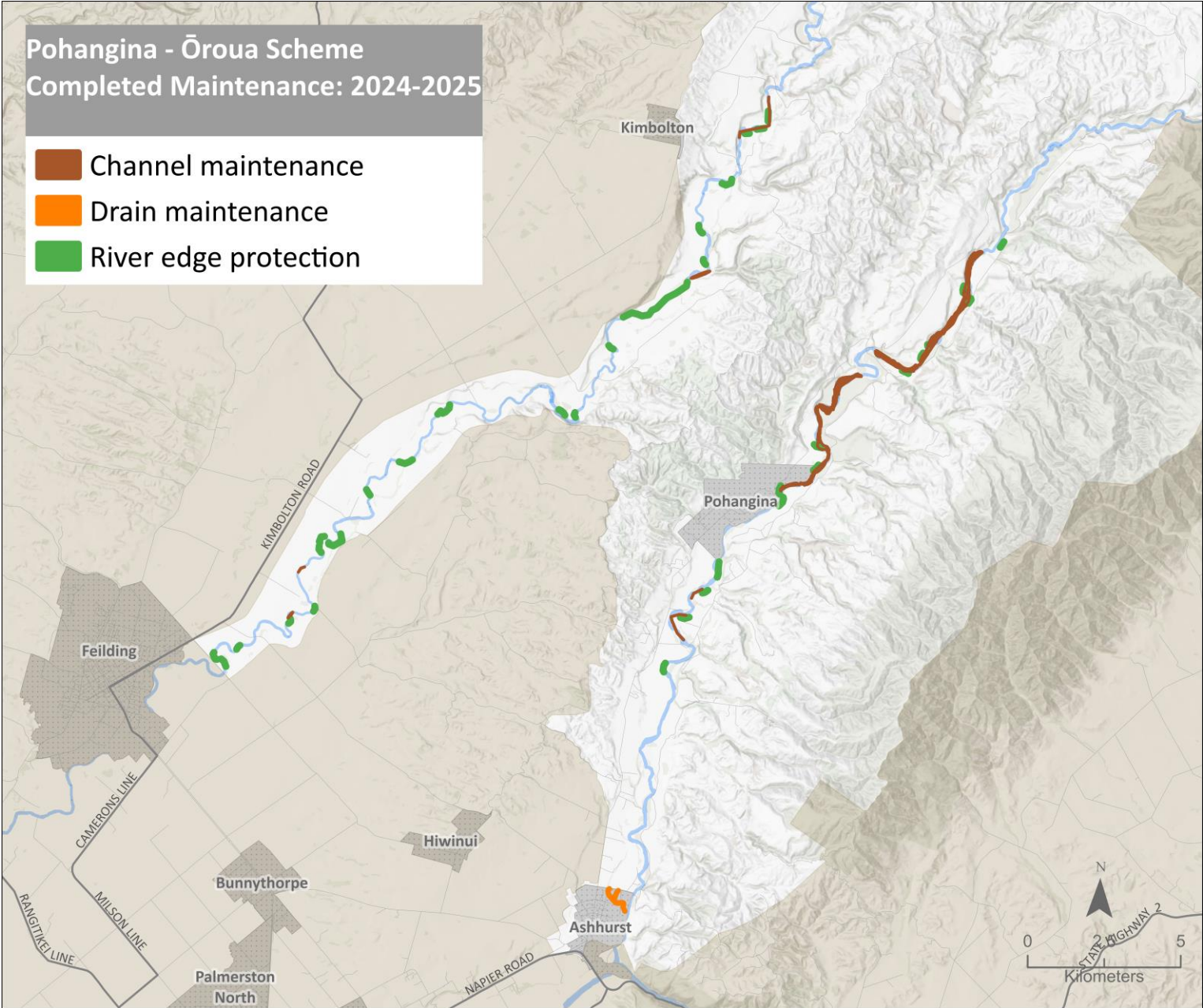
Manawatū schemes summary	Asset quantity	Works / checks	Percentage completed	Notes
Drains (km)	13.1	1.7	13%	Mostly mechanical
Floodgates (#)	13	13	100%	Maintenance and/or checks
Stopbanks (km)	3.3	0.6	18%	Mowing
River channel (km)		103.1		Aerial spraying and channel management
River edge protection (km)	90.1	39.2	44%	Willow maintenance
Dams (#)				
Pump stations (#)				
Weirs (#)	9	0	0%	
Amenity (#)				
Flood barrier (#)				

POHANGINA – ŌROUA SCHEME WORKS 2024-25

Budget expenditure:

- Maintenance approx. 76%; and
- Repairs approx. 196%.

Scheme maintenance	Asset quantity	Works / checks	Percent
Drains (km)	6.8	1.4	21%
Floodgates (#)			
Stopbanks (km)			
River channel (km)		77.8	
River edge protection (km)	71.6	8.8	12%
Dams (#)			
Pump stations (#)			
Weirs (#)			
Amenity (#)			
Flood barrier (#)			

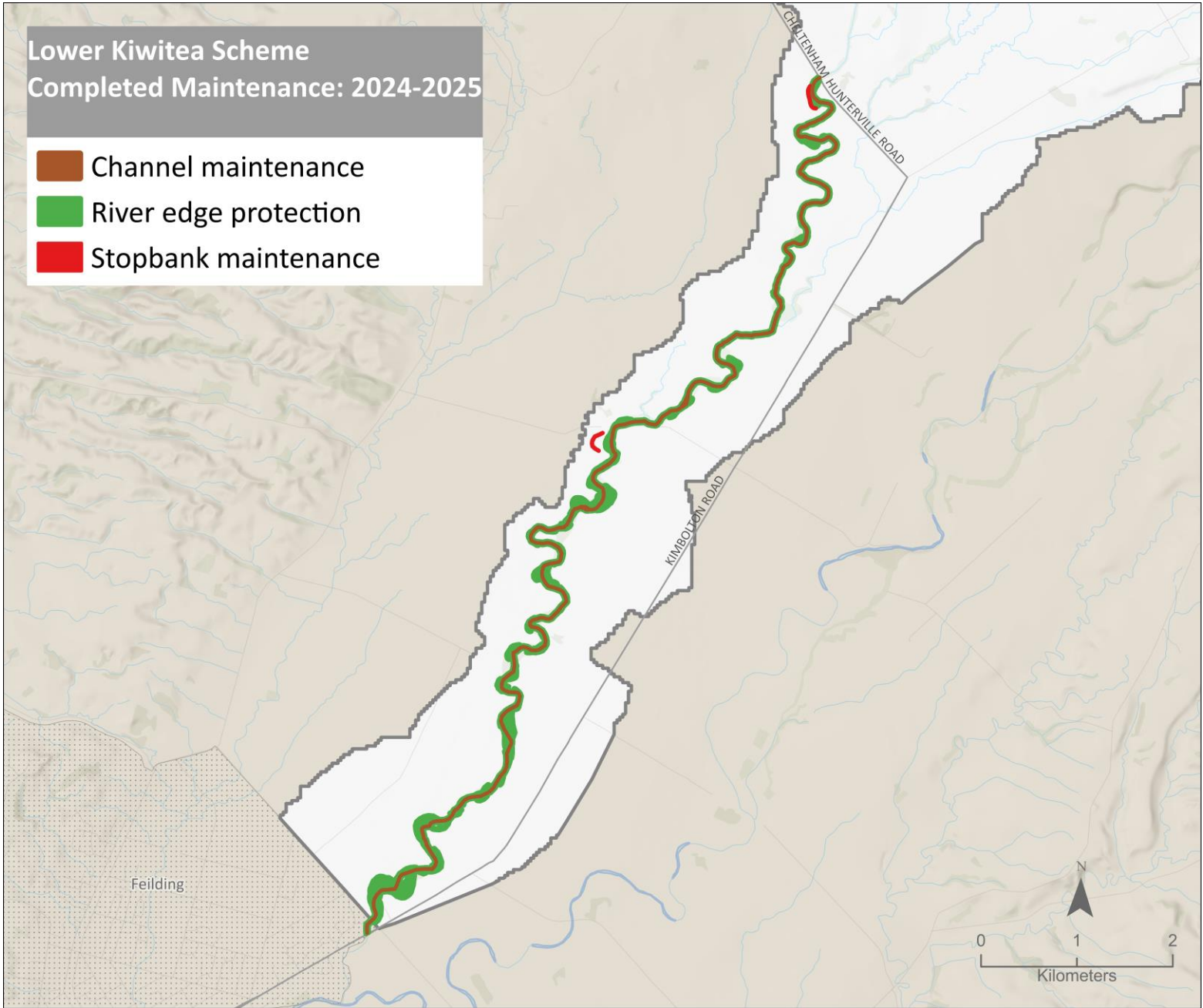


LOWER KIWITEA SCHEME WORKS 2024-25

Budget expenditure:

- Maintenance approx. 144%;
- Repairs approx. 33%; and
- Some repair budget reallocated to further maintenance.

Scheme maintenance	Asset quantity	Works / checks	Percent
Drains (km)			
Floodgates (#)			
Stopbanks (km)	0.6	0.6	100%
River channel (km)		22.5	
River edge protection (km)	18.5	30	162%
Dams (#)			
Pump stations (#)			
Weirs (#)			
Amenity (#)			
Flood barrier (#)			

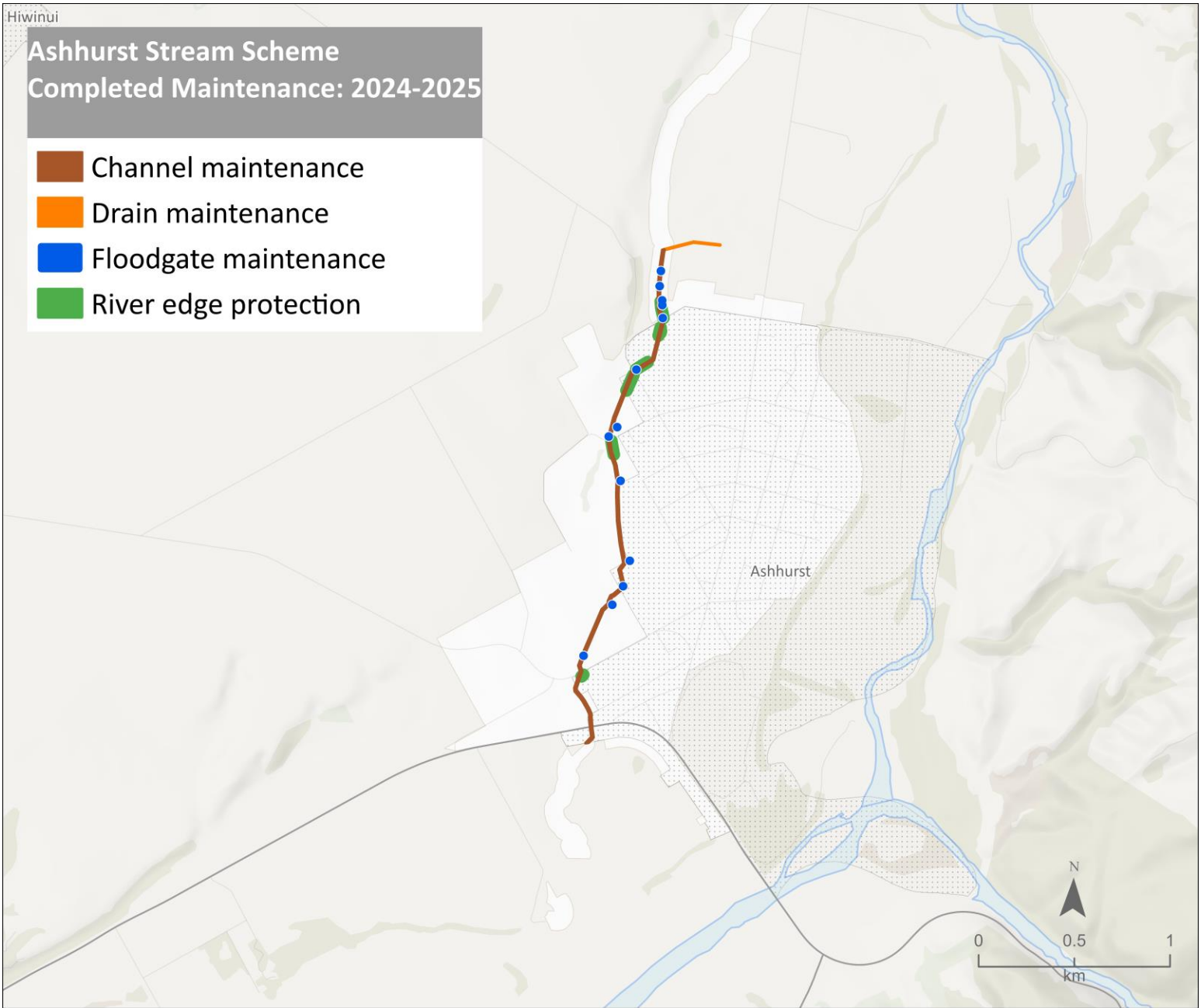


ASHHURST SCHEME WORKS 2024-25

Budget expenditure:

- Maintenance approx. 106%;
- Repairs approx. 0%; and
- Some repair budget reallocated to further maintenance.

Scheme maintenance	Asset quantity	Works / checks	Percent
Drains (km)	6.3	0.3	5%
Floodgates (#)	13	13	100%
Stopbanks (km)	2.7	0	0%
River channel (km)		2.8	
River edge protection (km)	0	0.4	NA
Dams (#)			
Pump stations (#)			
Weirs (#)	9	0	0%
Amenity (#)			
Flood barrier (#)			



CAPITAL PROGRAMME SUMMARY

Regional Overview

- Delivery tracking to approx. \$19M, nearly double previous year \$10.5M.
- Last year for most government co-funded projects.
- \$11M of government co-funding toward \$29M budget.
- Main underspend was Te Pūwaha (Whanganui) where construction is now underway and the budget carries forward into the new year.
- Next years budget \$7M. Te Pūwaha, Feilding and Palmerston North.
- Flood vulnerability assessment to inform the future work programme.

Local Example: Feilding flood resilience project

Works completed this year included:

- Makino gravel management to increase channel capacity during floods;
- Formation of a governance group, Manawātū District Council, Horizons, iwi and a landowner representative;
- Land purchase to support the implementation of the Reid Line project; and
- Additional technical work.

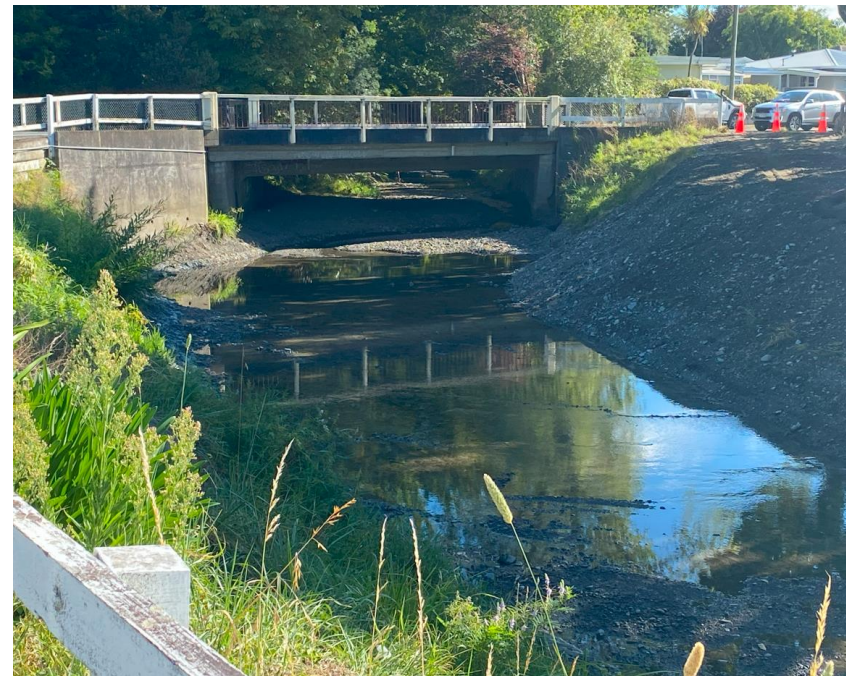


Photo: Gravel management near the Duke Street Bridge in the Makino Stream (Feilding).



horizons.govt.nz



horizons
MANAWATŪ DISTRICT COUNCIL

Manland Area

REGIONAL CAPITAL PROGRAMME OVERVIEW 2024-25

Area	Whanganui	Rangitīkei	Palmerston North	Horowhenua
Project	Te Pūwaha	Climate resilience	Climate resilience	Climate resilience (Lower Manawatū)
Supported by	PGF (Kanoa), WDC, HRC	Kanoa, HRC	Kanoa, HRC	Kanoa, HRC
Purpose	River Training	Room for river	Flood protection	Flood protection
Delivery 24-25	Consenting & design. Construction underway. Project delivery is in partnership with Te Mata Pūau.	Vegetation and gravel management, room for river report, planting, track upgrade at Scotts Ferry.	Te Matai Road and Tremaine Avenue works completed. Belvedere Crescent works started, to finish in spring.	Upgrades to Moutoa sluice gates and wet gates, Tokomaru and Koputoroa stopbanks. Rangiotu gates design updated.
Area	Whanganui	Manawatū	Horowhenua	Foxton
Project	Pūtiki resilience	Feilding flood resilience	Pump Station upgrades	Climate Resilience (Foxton)
Supported by	HRC, Pūtiki community, WDC & Waka Kotahi	HRC with governance group, MDC, iwi and landowner rep.	Cyclone recovery unit, HRC.	Kanoa, HDC, HRC, governance group community and hapū reps.
Purpose	Investigations	Flood protection	Alternative power supply and comms.	Flood resilience
Delivery 24-25	Hydrology study and options assessment.	Options assessment, further work on Reid Line spillway upgrade. Land Purchase.	Generators purchased, plugs installed.	Sheet piling Kings Canal Pumps purchase and set up for use.

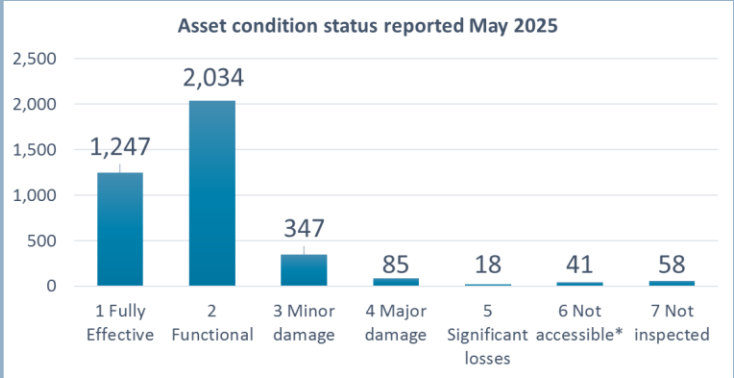
ASSET MANAGEMENT – STATE OF THE NETWORK

Regional Overview

- Over 3,800 assets valued at over \$1.2 Billion.
- Maximum insurance claim per event is up to \$0.1 Billion.
- Assets insured total \$0.811 Billion.
- Single asset management plan produced to replace 27 plans (more efficient, to be updated annually).

Regional Asset Condition

- 103 (5%) of assets have major or significant damage.
- A further 347 (9%) have minor damage.



Regional Asset Defects

- 477 assets at least one of the 1,104 known defects.
- Capacity and information systems are limiting defects management. The Annual Plan has prioritised this.

Defects reporting by area	Number of assets (total)	Number of assets with active defects ¹	Number of active defects
Eastern	812	70	105
Northern	562	42	77
Southern	1,244	92	197
Central	1,210	273	725
Total	3,828	477 ²	1,104

Manawatū Schemes Asset Defects

- The Manawatū schemes area in the central area where:
 - There are 1,210 assets.
 - Of these 273 (23%) have at least one known defect.
 - There are 725 known defects.

* May 2025 reporting. <https://www.horizons.govt.nz/HRC/media/Media/Agenda-Reports/Integrated-Catchment-Committee-Folder/Integrated-Catchment-Committee-2025-14-05/2559%20Catchment%20Operations%20Group%20Regional%20Summary%20Report.pdf> Pages 63 to 65

FLOOD VULNERABILITY ASSESSMENT (FVA)

Regional Overview

- Infrastructure strategy recommendation to define a strategic approach to future work programmes.
- Co-funded by Cyclone Recovery Unit funding as part of a larger project.
- The FVA work programme is shown to the right.
- Note work around assets and more detailed flood modelling for the lower Manawatū are also included.

What will it mean for Manawatū Schemes

Project aims to inform/ prioritise work programmes for:

- Future flood modeling (may inform district planning).
- Emergency management planning/response.
- Future flood protection design and works (e.g. how do new Ashhurst stopbanks & others fit within priorities?).

Work Programme

1. Review existing flood mapping

- Consolidate and review.
- Comment suitability for various purposes.

2. Develop a regional flood model

3. Produce flood maps for various size events

- With/without climate change & flood defences.

4. Produce a flood vulnerability assessment

- Regional level – 50 towns & settlements.
- District summary.
- Individual town/settlement summaries.

5. Provide a report - including commentary on interpretation and recommendations for future flood modelling work.

REGULATORY MATTERS

Regional Overview

- Obtaining and complying with approvals is essential to getting work done.
- Approvals take many forms - consents, landowners, treaty legislation, community buy-in, national legislation etc.
- Obtaining approvals and complying is increasingly complex.
- Most of the schemes have not budgeted for this.
- Restructuring has enabled more capacity for this work.
- Systems and processes have been improved.

Local regulatory work over the year

- A lot of assessments have been completed prior to undertaking operational works.
- Have been progressing Ōroua and Pohangina gravel consenting as well as aerial spraying consents (see the case study).

Consenting and compliance

- Schemes have over 200 consents and 4,000 conditions.
- New consents are required when consents expire and when new works are proposed.
- Over 30 consent processes this year. Some ongoing.
- No significant non-compliances in 2024-25.
- A region wide abatement notice has been issued.
- One prosecution is being responded to (works June 2024).
- All significant works are now assessed via a panel.

Local consenting work required

- Feilding flood resilience consents are a priority.
- Gravel management consents & aerial spraying consents.
- Important that landowners and contractors do not do work that is outside the scope authorised.

For more information please refer to May 2025 reporting.

<https://www.horizons.govt.nz/HRC/media/Media/Agenda-Reports/Integrated-Catchment-Committee-Folder/Integrated-Catchment-Committee-2025-14-05/2559%20Catchment%20Operations%20Group%20Regional%20Summary%20Report.pdf> Pages 81 to 88



horizons.govt.nz

MANAWATŪ SCHEMES – FINANCE SUMMARY

- The 3 Manawatū area schemes are a mix of channel maintenance, flood protection and drainage.
- These schemes have approximately \$20.4M of assets, 2% of the regional total.
- Predicted year start for 2025-26: Annual rates budget \$0.76M, \$0.45M loans, \$0.58M reserves.
- The Pohangina-Ōroua scheme has a negative reserves balance and demand for work exceeds funds available.

Scheme	Purpose	Total assets (\$, June 2024)	Rates Budget (\$) 2025-26	Loans* (\$)	Emergency Reserves* (\$)	Renewal Reserves* (\$)
Pohangina-Ōroua	Channel	12,850,674	560,017	433,967	66,707	-33,827
Lower KIWITEA	Channel	6,385,984	171,700	17,164	466,326	
Ashhurst	Flood Control	1,155,980	28,659	-	82,387	2,100
Total (3 schemes)		20,392,638	760,376	451,131	615,420	-31,727
Regional Total		1,197,889,972	17,675,414	50,049,333	11,635,681	1,144,487
% of Regional Total		2%	4%	0.9%	5%	-3%
Lower Manawatū		693,930,357	6,419,093	36,656,899	3,458,635	13,760

* Forecast value at 1 July 2025

MANAWATŪ SCHEMES – RATE INCREASES

- The average local scheme rate increases range from 4% to 7.9%.
- A key driver is additional funding for maintenance and repairs.

Scheme	Rates (\$) 2024-25	Rates (\$) 2025-26	Rates (\$) change	Rates % change	Notes
Pohangina-Ōroua	538,529	560,017	21,488	4%	Increase in maintenance and repair funding
Lower Kiwitea	162,030	171,700	9,670	6%	Increase in maintenance and repair funding
Ashhurst	26,572	28,659	2,087	7.9%	Increase in maintenance and repair funding

MANAWATŪ SCHEMES – CURRENT CONTEXT AND YEAR AHEAD

Current context

Pohangina-Ōroua Scheme

- Scheme financially constrained.
- Consenting adding costs to the scheme.
- Potential for public hearings for consents.
- River management lines work underway.
- Saddle Road gravel extraction on hold (permissions, questions regarding effectiveness of the work).

Kiwitea

- Gravel consents being aligned into Ōroua consents.
- Reid Line project will need to consider this scheme.

Ashhurst

- Significant reduction in rates in 2024-25.
- Reduced ability to undertake work.
- Ashhurst stopbanks have been raised as part of the future development strategy. No plans at this stage.

The year ahead

Priorities for the year will include:

- Implementing a further year of the maintenance based programme;
- Operating within regulatory frameworks;
- Progressing consenting requirements;
- Using asset information to prioritise repairs, upgrading tracking of defects;
- Reviewing the findings of the flood vulnerability assessment and assessing next steps;
- Responding to any high flow events as they occur;
- Emergency management/ response training; and
- Implementing smaller capital programme - Te Pūwaha (Whanganui), Te Arakura & Reid Line (Feilding) and Mangaone Stream (Palmerston North).

CASE STUDY: POHANGINA-ŌROUA ROOM FOR RIVER

Overview

- Following Cyclone Gabrielle Horizons secured \$300,000 from the Ministry for the Environment (MfE).
- Funding is via the Nature Based Solutions for Resilience Planning fund.
- The project is to explore the Room for the River concept for the Ōroua and Pohangina Rivers.
- The aim is investigate how to flood management could work with the natural environment to minimise the need for engineering interventions and ongoing maintenance.

Room for River: 2 methods, hybrid recommendations

- Method 1: hydraulic engineering management lines.
- Method 2: morphological & geological management lines.
- Combined: recommended management lines, a mix of both methods.

Next steps in the process

- Tonkin + Taylor have been engaged to develop a Natural Character Index Report and a Room for the River Report.
- The reports will assess changes in the river corridor over time and provide draft river management lines to inform the potential development of a management corridor.
- No decisions re implementing this project have been made.
- The annual plan process has provided for an ongoing room for river work programme. Noting the MfE funding has ended.

Governance Group and website

- A Governance Group of iwi, landowner, industry body, and central and local government representatives is guiding the project.
- Project webpage is on the Horizons website (link below).

CASE STUDY: POHANGINA-ŌROUA CONSENTING

Pohangina global gravel consent

- This consent has expired. Existing use rights not confirmed.
- A new application has been lodged.
- Some engagement with externals has been undertaken.
- A cultural impact assessment has been commissioned.
- Additional technical work has been completed (see right).
- Further work required to enable consent to be processed.

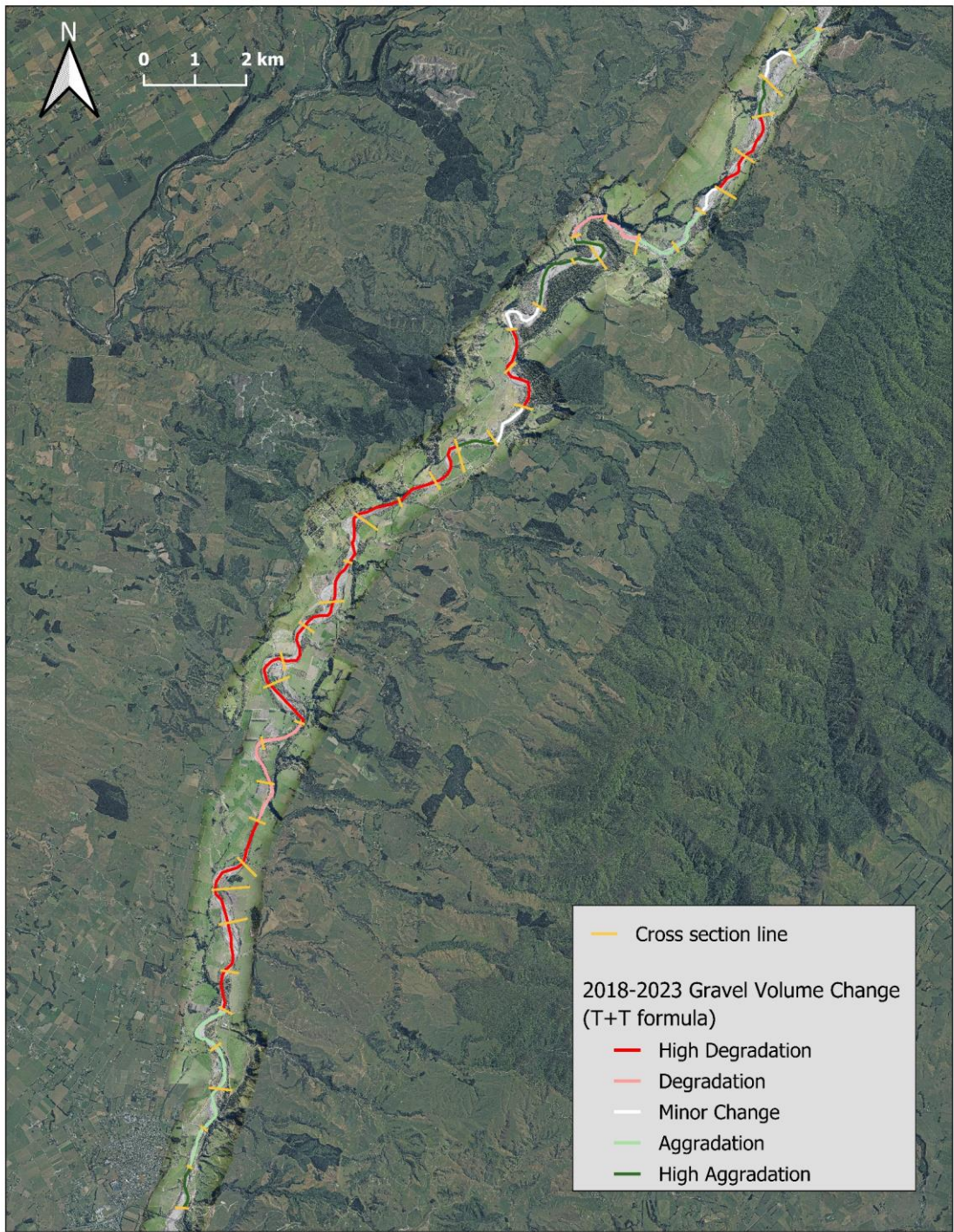
Ōroua global gravel consent

- Four consents are being merged into a single application.
- A consent application is being prepared.

Pohangina and Ōroua aerial discharge

- Consent application lodged. Existing use rights confirmed.
- A request for further information is being worked on.
- Extending coverage area further upstream.

For more information please refer to May 2025 reporting.
<https://www.horizons.govt.nz/HRC/media/Media/Agenda-Reports/Integrated-Catchment-Committee-Folder/Integrated-Catchment-Committee-2025-14-05/2559%20Catchment%20Operations%20Group%20Regional%20Summary%20Report.pdf> Pages 81 to 88



INDIVIDUAL SCHEME ASSET SUMMARIES



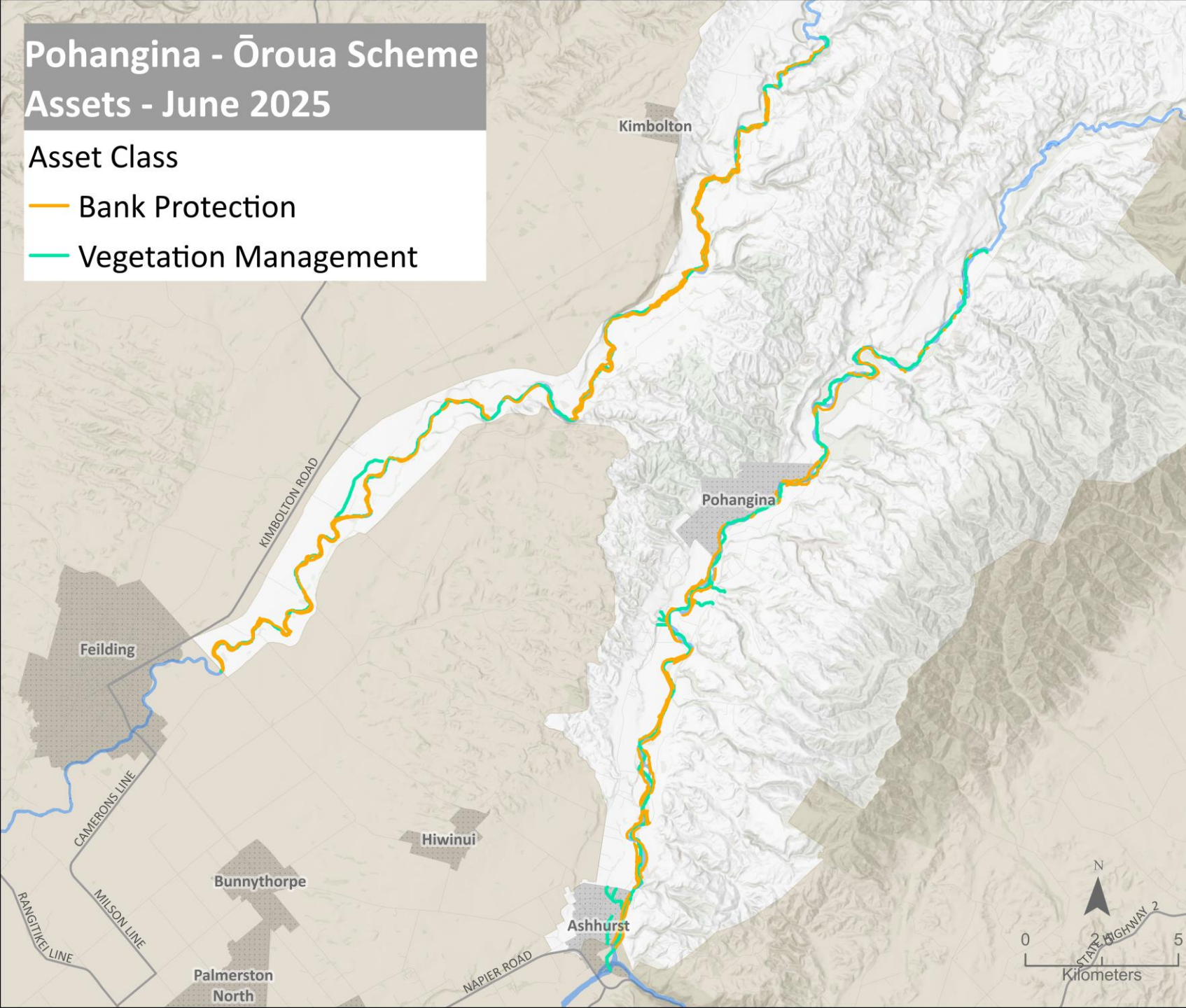
horizons.govt.nz

Pohangina - Ōroua Scheme Assets - June 2025

Asset Class

— Bank Protection

— Vegetation Management



POHANGINA-ŌROUA SCHEME ASSETS

Scheme assets include:

- 6.8 km of drains; and
- 71.6 km of river edge protection

This scheme also completes channel maintenance and some areas where this occurs may not be shown on the map.

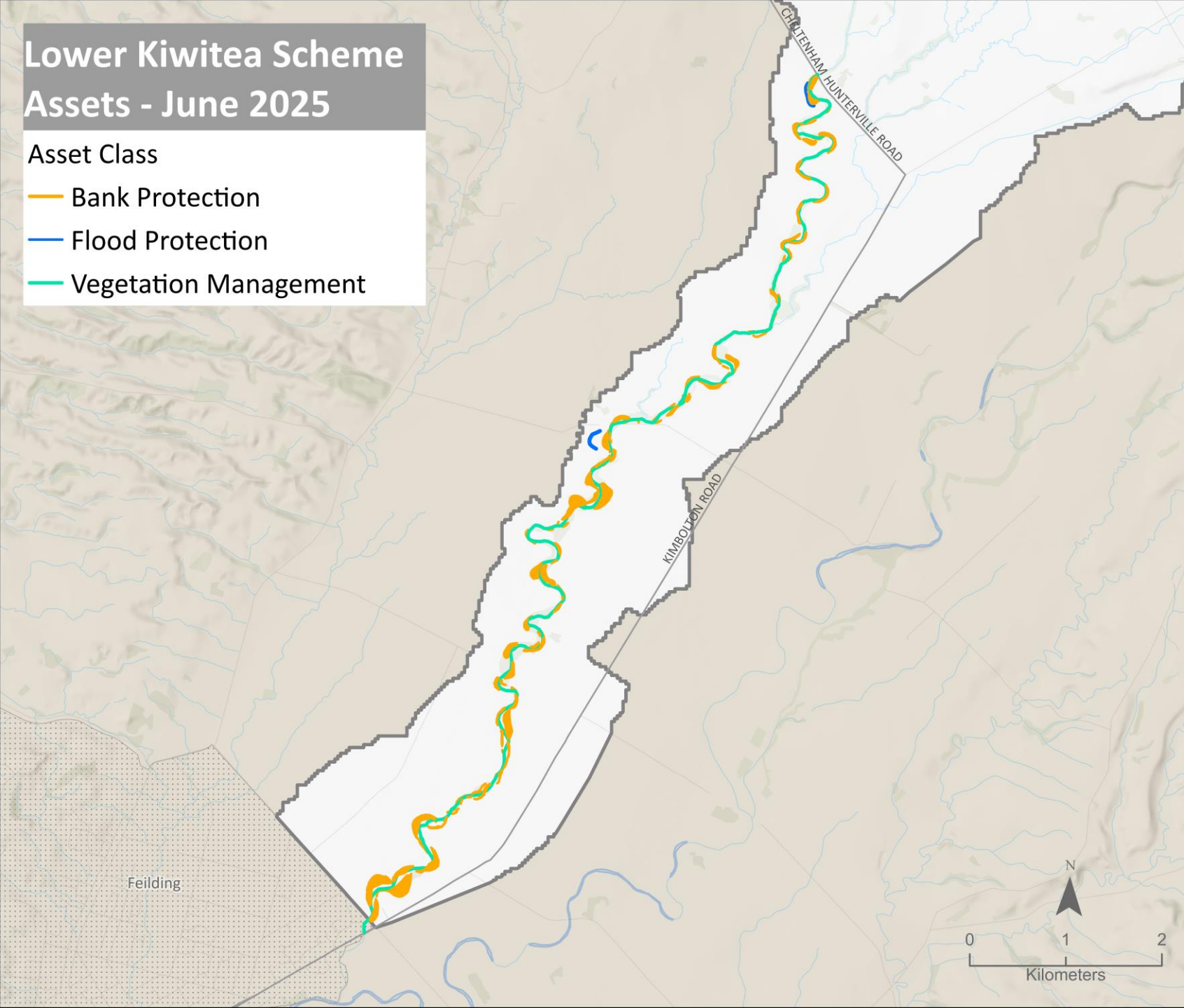


horizons.govt.nz

Lower Kiwitea Scheme Assets - June 2025

Asset Class

- Bank Protection
- Flood Protection
- Vegetation Management



KIWITEA SCHEME

ASSETS

Scheme assets include:

- 0.6 km of stopbanks
- 18.5 km of river edge protection

This scheme also completes channel maintenance and some areas where this occurs may not be shown on the map.

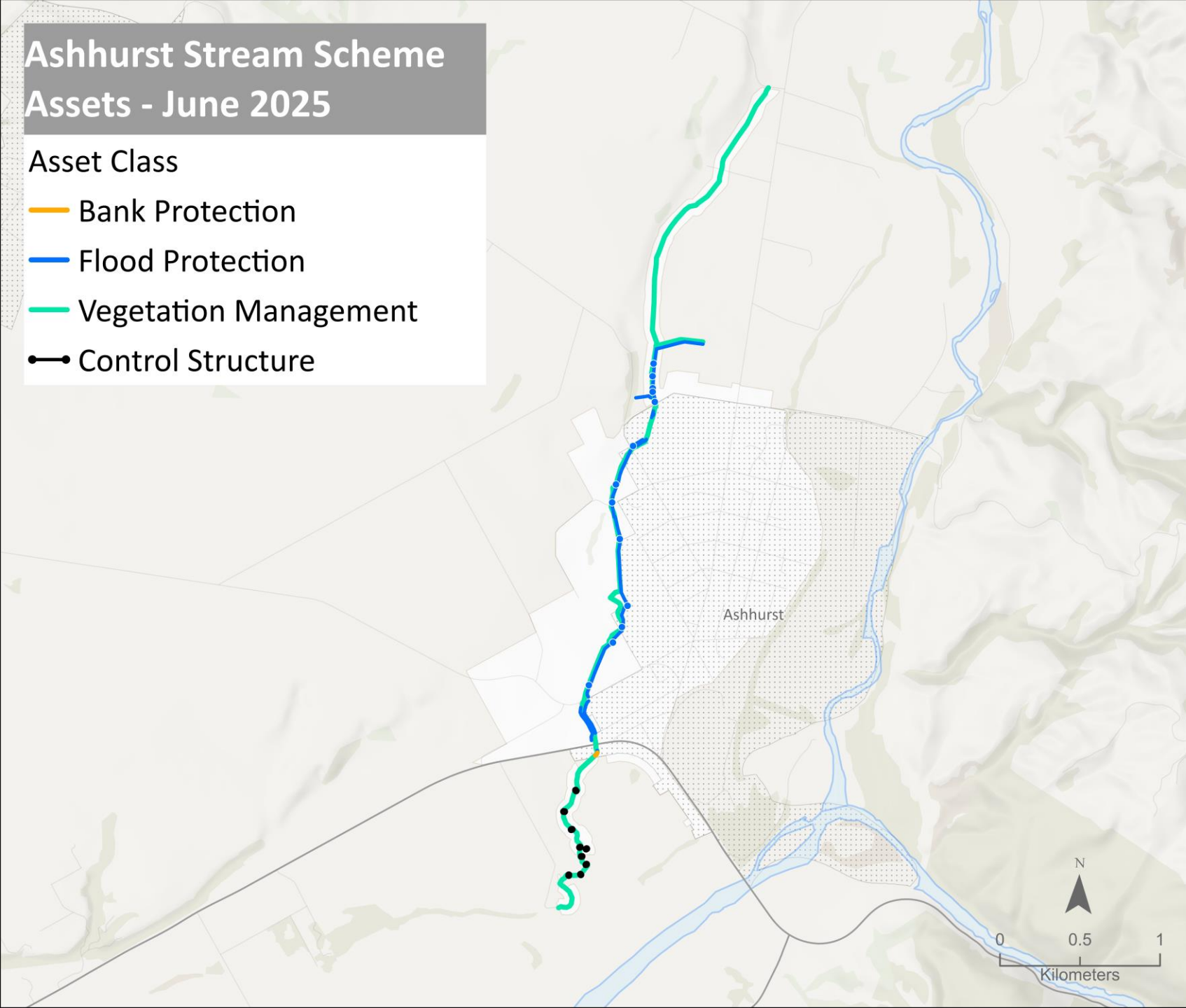


horizons.govt.nz

Ashhurst Stream Scheme Assets - June 2025

Asset Class

- Bank Protection
- Flood Protection
- Vegetation Management
- Control Structure



ASHHURST SCHEME

ASSETS

Scheme assets include:

- 6.3 km of drains
- 13 floodgates
- 2.7 km of stopbanks
- 0.4 km of river edge protection
- 9 weirs

This scheme also completes channel maintenance and some areas where this occurs may not be shown on the map.



horizons.govt.nz



horizons

REGIONAL COUNCIL



For more information visit www.horizons.govt.nz
or freephone Horizons on **0508 800 800**