



RANGITĪKEI DISTRICT SCHEMES

2ND JULY 2025

VENUE: HORIZONS OFFICE BOARDROOM, MARTON

RANGITĪKEI SCHEMES

Rangitīkei

Turakina

Tutaenui

Porewa

Forest Road

Makirikiri

Huanui

PRESENTATION FORMAT

Regional Overview

1. New maintenance programme results
2. Works reporting – local example
3. Capital works – local examples
4. Capital works – regional overview
5. Asset Management – insurance, known asset defects
6. Regional flood vulnerability assessment
7. Regulatory matters – consenting and compliance

Local Schemes – combined summary

8. Local schemes finance summary – rates, loans, reserves
9. Works summary last year – shows individual schemes
10. Local schemes current context and the year ahead
11. Rates increases
12. Case study – dam safety legislation
13. Presentation summary/ discussion

Small group discussions supported by individual scheme asset maps & works summaries (provided)

REGIONAL MAINTENANCE AND REPAIRS SUMMARY – 34 SCHEMES

- New maintenance based programme introduced.
- Settled weather has assisted the years activity.
- Some of the repairs budget has been redirected to maintenance.
- Preliminary results show 103% of maintenance budget spent, 52% of repairs budget.

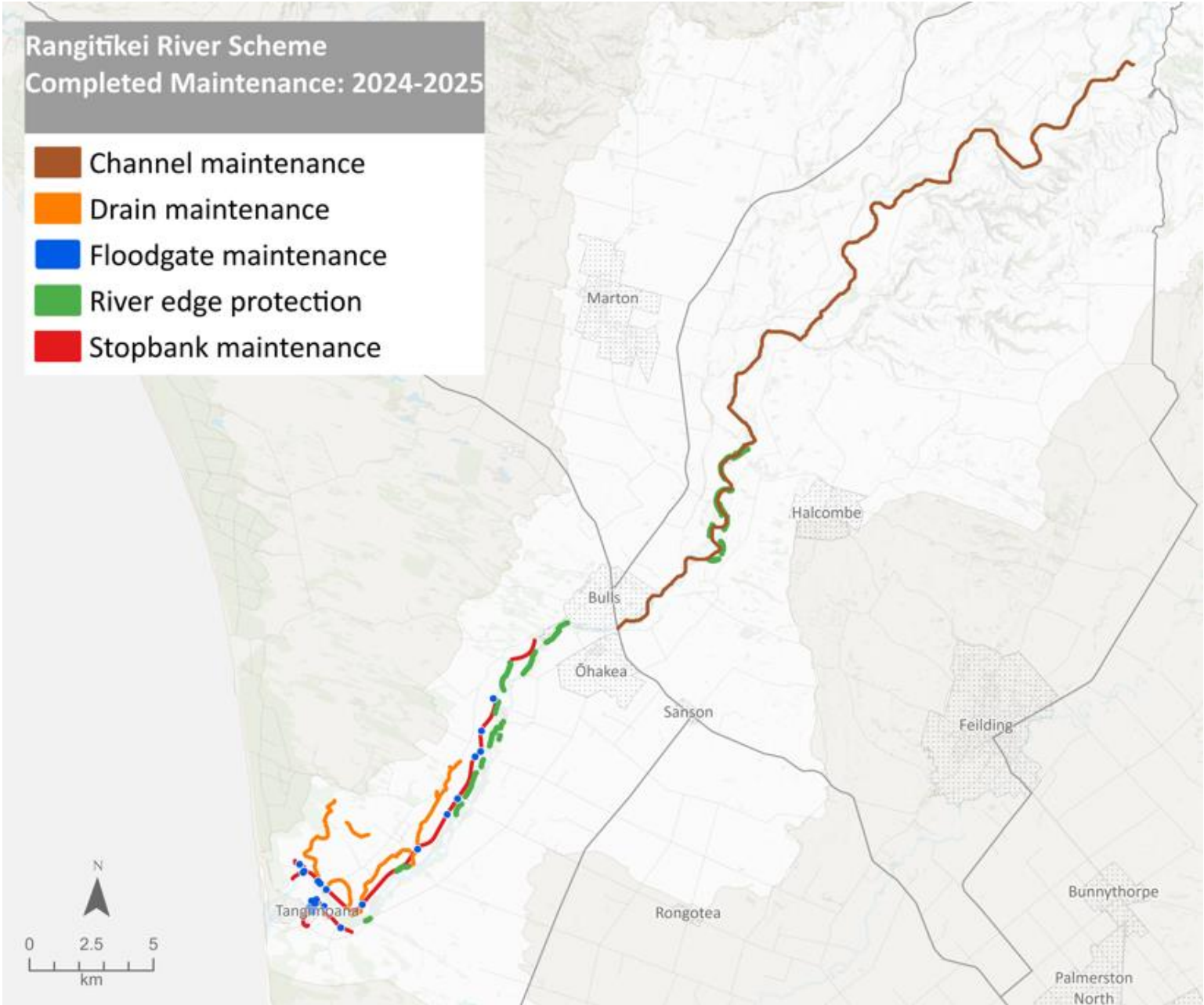
Regional summary	Asset quantity	Works / checks	Percentage	Notes Some areas maintained more than once
Drains (km)	1,149	1,955	170%	Mostly spray, some mechanical
Floodgates (#)	755	1,114	148%	Maintenance and/or checks
Stopbanks (km)	506	982	194%	Mostly mowing
River channel (km)		454		Includes aerial spraying, gravel management
River edge protection (km)	614	118	19%	Willow maintenance
Dams (#)	54	291	539%	Maintenance and/or checks
Pump stations (#)	24	69	288%	Maintenance and/or checks
Weirs (#)	77	5	6%	Maintenance
Amenity (#)	20	2	10%	Maintenance
Flood barrier (#)	10	4	40%	Maintenance and/or checks

WORKS REPORTING EXAMPLE - RANGITĪKEI SCHEME WORKS 2024-25

Budget expenditure:

- Maintenance approx. 124%.
- Repairs approx. 41%.
- Some repair budget reallocated to further maintenance.

Scheme maintenance	Asset quantity	Works / checks	Percent
Drains (km)	19.7	22.3	113%
Floodgates (#)	21	210	1,000%
Stopbanks (km)	22.2	20.6	93%
River channel (km)		44.7	
River edge protection (km)	49.8	11.8	24%
Dams (#)			
Pump stations (#)			
Weirs (#)			
Amenity (#)	4	0	0%
Flood barrier (#)			



CAPITAL PROGRAMME SUMMARY

Regional Overview

- Delivery tracking to approx. \$19M, nearly double previous year \$10.5M.
- Last year for most government co-funded projects.
- \$11M of government co-funding toward \$29M budget.
- Main underspend was Te Pūwaha (Whanganui) where construction is now underway and the budget carries forward into the new year.
- Next years budget \$7M. Te Pūwaha, Feilding and Palmerston North.
- Flood vulnerability assessment to inform the future work programme.

Local Example: Rangitīkei Climate Resilience project

Works completed this year included:

- Aerial spraying;
- Vegetation management;
- Gravel management;
- Berm land planting;
- A room for river report; and
- Work on the Scotts Ferry track.



Photo: Aerial spraying of plants establishing on gravel beaches in the Rangitīkei.



horizons.govt.nz

REGIONAL CAPITAL PROGRAMME OVERVIEW 2024-25

Area	Whanganui	Rangitīkei	Palmerston North	Horowhenua
Project	Te Pūwaha	Climate resilience	Climate resilience	Climate resilience (lower Manawatū)
Supported by	PGF (Kanoa), WDC, HRC	Kanoa, HRC	Kanoa, HRC	Kanoa, HRC
Purpose	River Training	Room for river	Flood protection	Flood protection
Delivery 24-25	Consenting & design. Construction underway. Project delivery is in partnership with Te Mata Pūau.	Vegetation and gravel management, room for river report, planting, track upgrade at Scotts Ferry	Te Matai Road and Tremaine Avenue works completed. Belvedere Crescent works started, to finish in spring.	Upgrades to Moutoa sluice gates and wet gates, Tokomaru and Koputoroa stopbanks. Rangiotu gates design updated.
Area	Whanganui	Manawatū	Horowhenua	Foxton
Project	Pūtiki resilience	Feilding flood resilience	Pump Station upgrades	Climate Resilience (Foxton)
Supported by	HRC, Pūtiki community, WDC & Waka Kotahi	HRC with governance group, MDC, iwi and landowner rep.	Cyclone recovery unit, HRC.	Kanoa, HDC, HRC, governance group community and hapū reps.
Purpose	Investigations	Flood protection	Alternative power supply and comms.	Flood resilience
Delivery 24-25	Hydrology study and options assessment	Options assessment, further work on Reid Line spillway upgrade. Land Purchase.	Generators purchased, plugs installed.	Sheet piling Kings Canal Pumps purchase and set up for use.

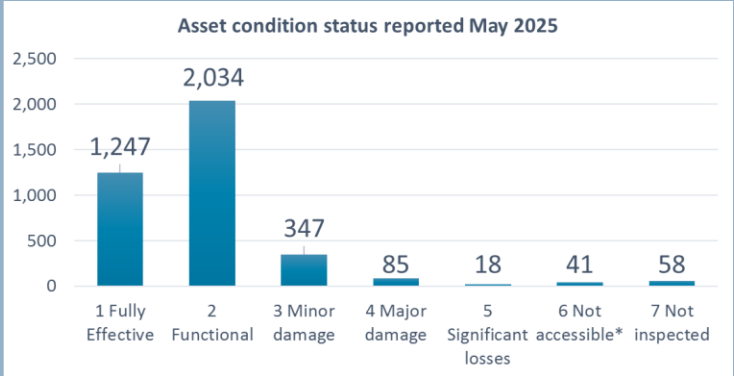
ASSET MANAGEMENT – STATE OF THE NETWORK

Regional Overview

- Over 3,800 assets valued at over \$1.2 Billion.
- Maximum insurance claim per event is up to \$0.1 Billion.
- Assets insured total \$0.811 Billion.
- Single asset management plan produced to replace 27 plans (more efficient, to be updated annually).

Regional Asset Condition

- 103 (5%) of assets have major or significant damage.
- A further 347 (9%) have minor damage.



Regional Asset Defects

- 477 assets at least one of the 1,104 known defects.
- Capacity and information systems are limiting defects management. The Annual Plan has prioritised this.

Defects reporting by area	Number of assets (total)	Number of assets with active defects ¹	Number of active defects
Eastern	812	70	105
Northern	562	42	77
Southern	1,244	92	197
Central	1,210	273	725
Total	3,828	477 ²	1,104

Rangitīkei Schemes Asset Defects

- The Rangitīkei schemes area in the northern area where:
 - There are 562 assets.
 - Of which 42 (7%) have at least one known defect.
 - There are 77 known defects.

* May 2025 reporting. <https://www.horizons.govt.nz/HRC/media/Media/Agenda-Reports/Integrated-Catchment-Committee-Folder/Integrated-Catchment-Committee-2025-14-05/2559%20Catchment%20Operations%20Group%20Regional%20Summary%20Report.pdf> Pages 63 to 65

FLOOD VULNERABILITY ASSESSMENT (FVA)

Regional Overview

- Infrastructure strategy recommendation to define a strategic approach to future work programmes.
- Co-funded by Cyclone Recovery Unit funding as part of a larger project.
- The FVA work programme is shown to the right.
- Note work around assets and more detailed flood modelling for the lower Manawatū are also included.

What will it mean for the Rangitīkei

Project aims to inform/ prioritise work programmes for:

- Future flood modeling (may inform district planning);
- Emergency management planning/response; and
- Future flood protection design and works (e.g. how do Marton, Scotts Ferry and others fit within priorities?).

Work Programme

1. Review existing flood mapping

- Consolidate and review.
- Comment suitability for various purposes.

2. Develop a regional flood model

3. Produce flood maps for various size events

- With/without climate change & flood defences.

4. Produce a flood vulnerability assessment

- Regional level – 50 towns & settlements.
- District summary.
- Individual town/settlement summaries.

5. Provide a report - including commentary on interpretation and recommendations for future flood modelling work.

REGULATORY MATTERS

Regional Overview

- Obtaining and complying with approvals is essential to getting work done.
- Approvals take many forms - consents, landowners, treaty settlements, community buy-in, national legislation etc.
- Obtaining approvals and complying is increasingly complex.
- Most of the schemes have not budgeted for this.
- Restructuring has enabled more capacity for this work.
- Systems and processes have been improved.

Local regulatory work over the year

- A lot of assessments have been completed prior to undertaking operational works.
- High flow channel creation has been investigated, no application for consent has been made.

Consenting and compliance

- Schemes have over 200 consents and 4,000 conditions.
- New consents are required when consents expire and when new works are proposed.
- Over 30 consent processes this year. Some ongoing.
- No significant non-compliances in 2024-25.
- A region wide abatement notice has been issued.
- One prosecution is being responded to, works June 2024.
- All significant works are now assessed via a panel.

Local consenting work required

- Consenting for some works in the Makirikiri has been identified as required.
- Important that landowners and contractors do not do work that is outside the scope authorised.

For more information please refer to May 2025 reporting.

<https://www.horizons.govt.nz/HRC/media/Media/Agenda-Reports/Integrated-Catchment-Committee-Folder/Integrated-Catchment-Committee-2025-14-05/2559%20Catchment%20Operations%20Group%20Regional%20Summary%20Report.pdf> Pages 81 to 88



horizons.govt.nz

LOCAL SCHEMES – FINANCE SUMMARY

- The 7 Rangitīkei area schemes are a mix of channel maintenance, flood protection and drainage.
- These schemes have approximately \$152M of assets, 13% of the regional total.
- Predicted year start for 2025-26: Annual rates budget \$1.6M, \$3.89M loans, \$1.71M reserves.
- Porewa and Tutaenui have negative reserve balances due to dam safety regulations.

Scheme	Purpose	Total assets (June 2024, \$)	Rates Budget 2025-26 (\$)	Loans* (\$)	Emergency Reserves* (\$)	Renewal Reserves* (\$)
Rangitīkei	Flood Control	131,479,998	1,235,235	3,869,230	1,585,414	-
Turakina	Channel		60,133	-	101,182	-
Tutaenui	Flood Control	5,083,508	134,190	18,759	-11,422	7,505
Porewa	Flood Control	10,583,431	136,451	-	-7,976	34,942
Forest Road	Drainage	55,460	28,462	-	4,805	4,400
Makirikiri	Flood Control	4,321,092	103*	-	7,585	48,582
Haunui	Drainage	349,962	25,644	-	20,594	-
Rangitīkei all		152,370,451	1,620,217	3,887,989	1,700,182	85,439
Regional Total		1,197,889,972	17,675,414	50,049,333	14,635,681	1,144,487
% of Regional Total		13%	9%	19%	11%	7%

* Forecast value at 1 July 2025

RANGITĪKEI SCHEMES - WORKS SUMMARY 2024-25

- New maintenance based programme introduced. Settled weather has also assisted the years activity.
- Across the 7 schemes:
 - 134% of the maintenance budget spent;
 - 42% of the repairs budget (as at early June). Note some reallocation to maintenance.
- Individual scheme results, including maintenance and repair budget expenditure, provided in later slides.

Rangitīkei schemes summary	Asset quantity	Works / checks	Percentage	Notes
Drains (km)	59	103	176%	Mostly spray, some mechanical
Floodgates (#)	35	224	640%	Maintenance and/or checks
Stopbanks (km)	30	21	72%	Mostly mowing
River channel (km)	--	76	--	Aerial spraying and gravel management
River edge protection (km)	50	12	24%	Willow maintenance
Dams (#)	46	266	578%	Maintenance and/or checks
Pump stations (#)	0	0	NA	-
Weirs (#)	14	2	14%	Maintenance and/or checks
Amenity (#)	4	0	0%	-
Flood barrier (#)	0	0	NA	

RANGITĪKEI SCHEMES – CURRENT CONTEXT AND YEAR AHEAD

Current context

Rangitīkei Scheme – no government co-funding

- The Rangitīkei Climate resilience project has enabled additional work over recent years.
- This is now complete and less work will be able to be completed over the coming year.

Dams

- Dam safety legislation continues to impact several of the schemes and there are ongoing costs (see the case study for more information).

Staffing

- There has been staff changes/ staff away unwell.
- Staffing from other areas will be providing support to the Northern Team over the coming year.

The year ahead

Priorities for the year will include:

- Implementing a further year of the maintenance based programme.
- Operating within regulatory framework.
- Assessing consenting requirements and seeking appropriate permissions.
- Using asset information to prioritise repairs, upgrading tracking of defects.
- Reviewing the findings of the flood vulnerability assessment and assessing next steps.
- Responding to any high flow events as they occur.
- Emergency management/ response training.
- Implementing smaller capital programme - Te Pūwaha (Whanganui), Te Arakura & Reid Line (Feilding) and Mangaone Stream (Palmerston North).

RANGITĪKEI SCHEMES – RATE INCREASES

- The local scheme rate increases range from 1.2% to 8.1%.
- A key driver is additional funding for maintenance and repairs.

Scheme	Rates (\$) 2024-25	Rates (\$) 2025-26	Rates (\$) change	Rates % change	Notes
Rangitīkei	1,186,554	1,235,235	48,681	4.1%	Increase in maintenance and repairs funding plus reserve contributions.
Turakina	59,442	60,133	691	1.2%	Inflation.
Tutaenui	125,732	134,190	8,457	6.7%	Increase in maintenance and repairs funding.
Porewa	126,488	136,451	9,962	7.9%	Increase in maintenance and repairs funding.
Forest Road	26,334	28,462	2,127	8.1%	Increase in maintenance and repairs funding.
Makirikiri	35,568 (reserves)	103* (this plus other from reserves)	-35,465		Zero rates for two years funded via reserves for two years. A return to rate funding will likely required next year.
Haunui	24,030	25,644	1,614	6.7%	Increase in maintenance and repairs funding.
Rangitīkei all	1,584,149	1,620,217	36,068	2.3%	
Regional Total	16,574,577	17,675,414	1,100,837	6.6%	
% of Regional Total	9.6%	9.2%	3.3%		

CASE STUDY: DAM SAFETY REGULATIONS

Regional overview

- The first task was to complete classifications.
- 54 dams (5 schemes) required potential impact classifications (PIC). Of these:
 - 36 were low;
 - 3 medium (1 each Porewa, Tutaenui & Matarawa);
 - 8 were high (4 each Tutaenui and Porewa).
- Initial classifications were:
 - submitted in August 2024; and
 - certificates were received in September 2024.

Next steps in the process

- Dam safety assurance plans are required by:
 - September 2025 for high classification dams; and
 - September 2026 for low classification dams.
- These are on track for completion within timeframes.
- The Plans require updating over time and have actions that have to be required. Mostly these are inspections:
 - Monthly for high and medium PIC dams; and
 - 3 monthly for low PIC dams.

Impact on local schemes - additional costs

- The additional costs for the dam safety regulations are impacting scheme budgets.
- Costs are being allocated to schemes based on the requirements for individual dams.
- This has required some reserve draw downs and may require some loan funding in the Tutaenui and Porewa schemes.
- Some operational work is not being completed to offset this expenditure.

INDIVIDUAL SCHEME SUMMARIES

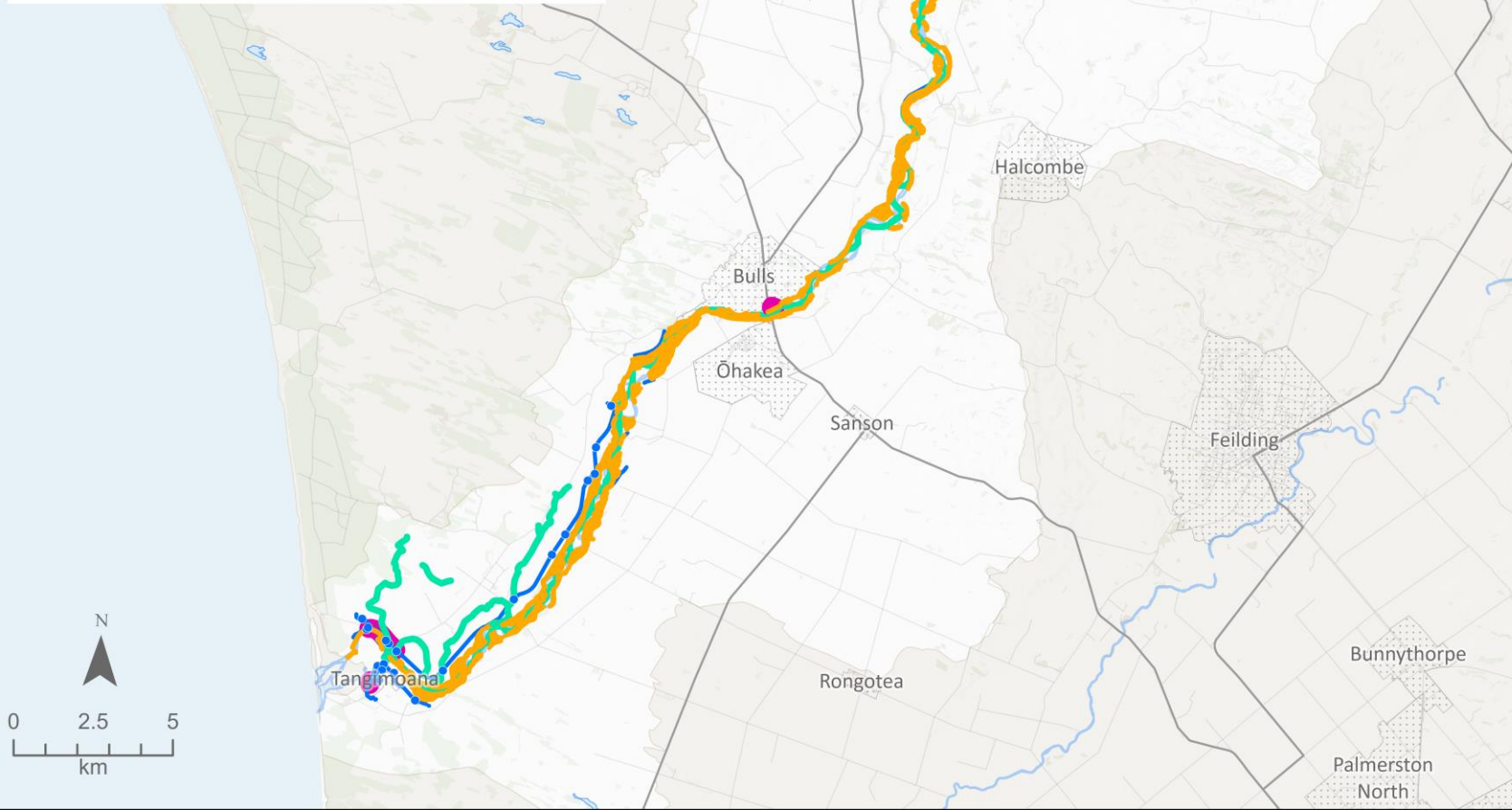


horizons.govt.nz

Rangitīkei River Scheme Assets - June 2025

Asset Class

- Bank Protection
- Enhancement
- Flood Protection
- Vegetation Management



RANGITĪKEI SCHEME

ASSETS MAP

Scheme assets include:

- 19.7 km of drains
- 21 floodgates
- 22.2 km of stopbank
- 49.8 km of river edge protection
- 4 amenity enhancements

This scheme also completes channel maintenance and some areas where this occurs may not be shown on the map.



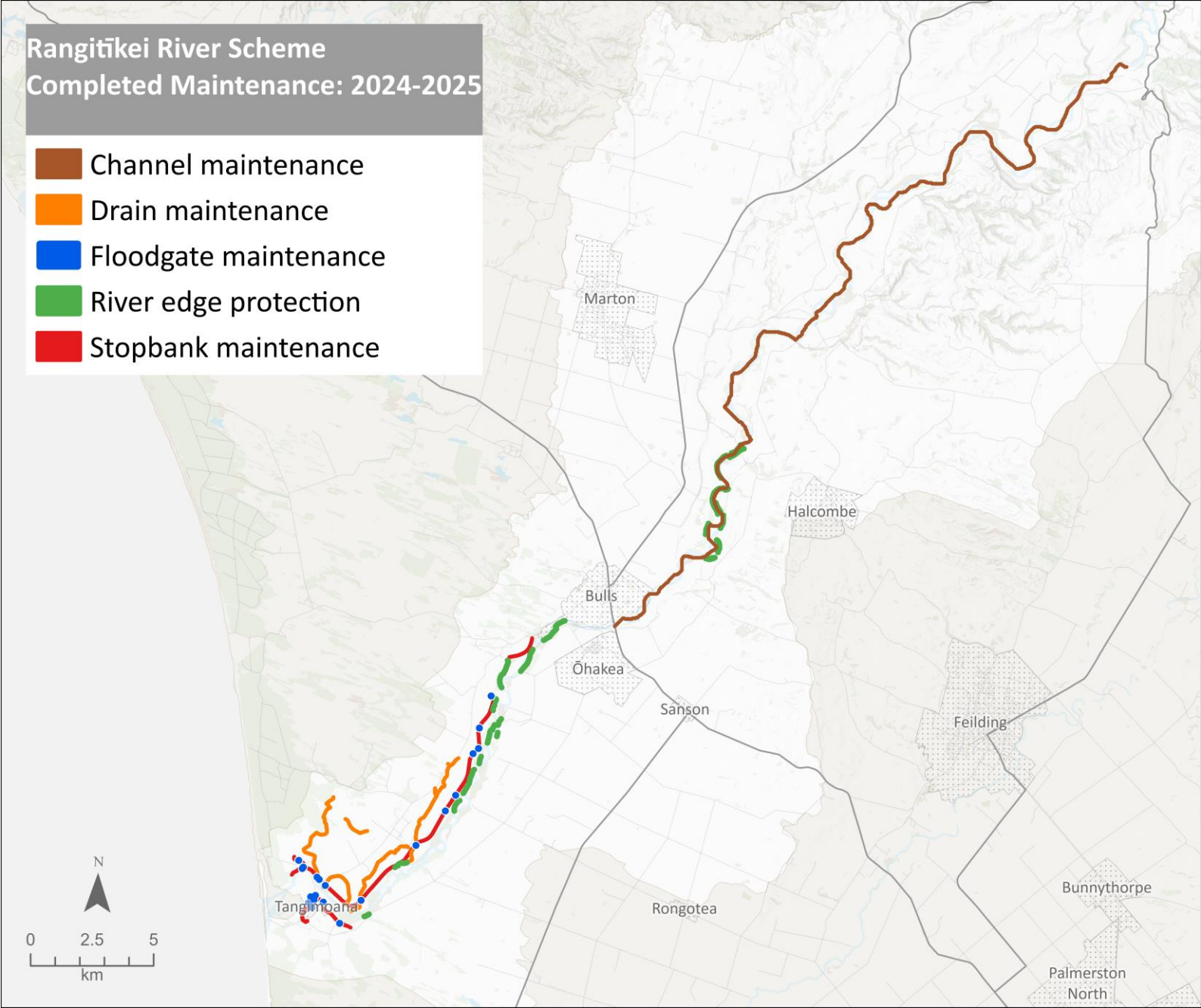
horizons.govt.nz

RANGITĪKEI SCHEME – WORKS 2024-25

Budget expenditure:

- Maintenance approx. 124%;
- Repairs approx. 41%; and
- Some repair budget reallocated to further maintenance.

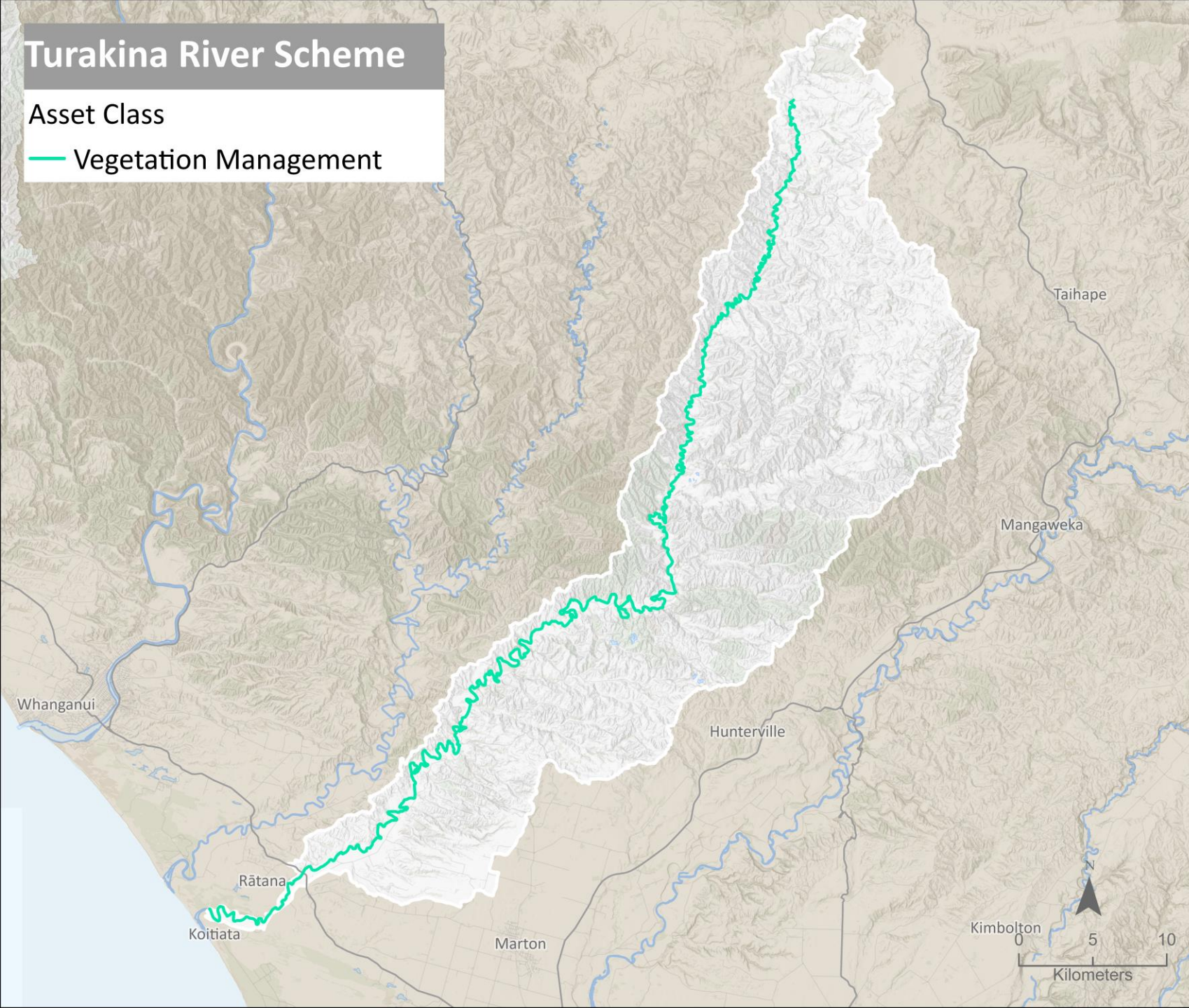
Scheme maintenance	Asset quantity	Works / checks	Percent
Drains (km)	19.7	22.3	113%
Floodgates (#)	21	210	1,000%
Stopbanks (km)	22.2	20.6	93%
River channel (km)		44.7	
River edge protection (km)	49.8	11.8	24%
Dams (#)			
Pump stations (#)			
Weirs (#)			
Amenity (#)	4	0	0%
Flood barrier (#)			



Turakina River Scheme

Asset Class

— Vegetation Management



TURAKINA SCHEME

ASSETS

- This scheme is a vegetation management scheme.
- There are no assets.



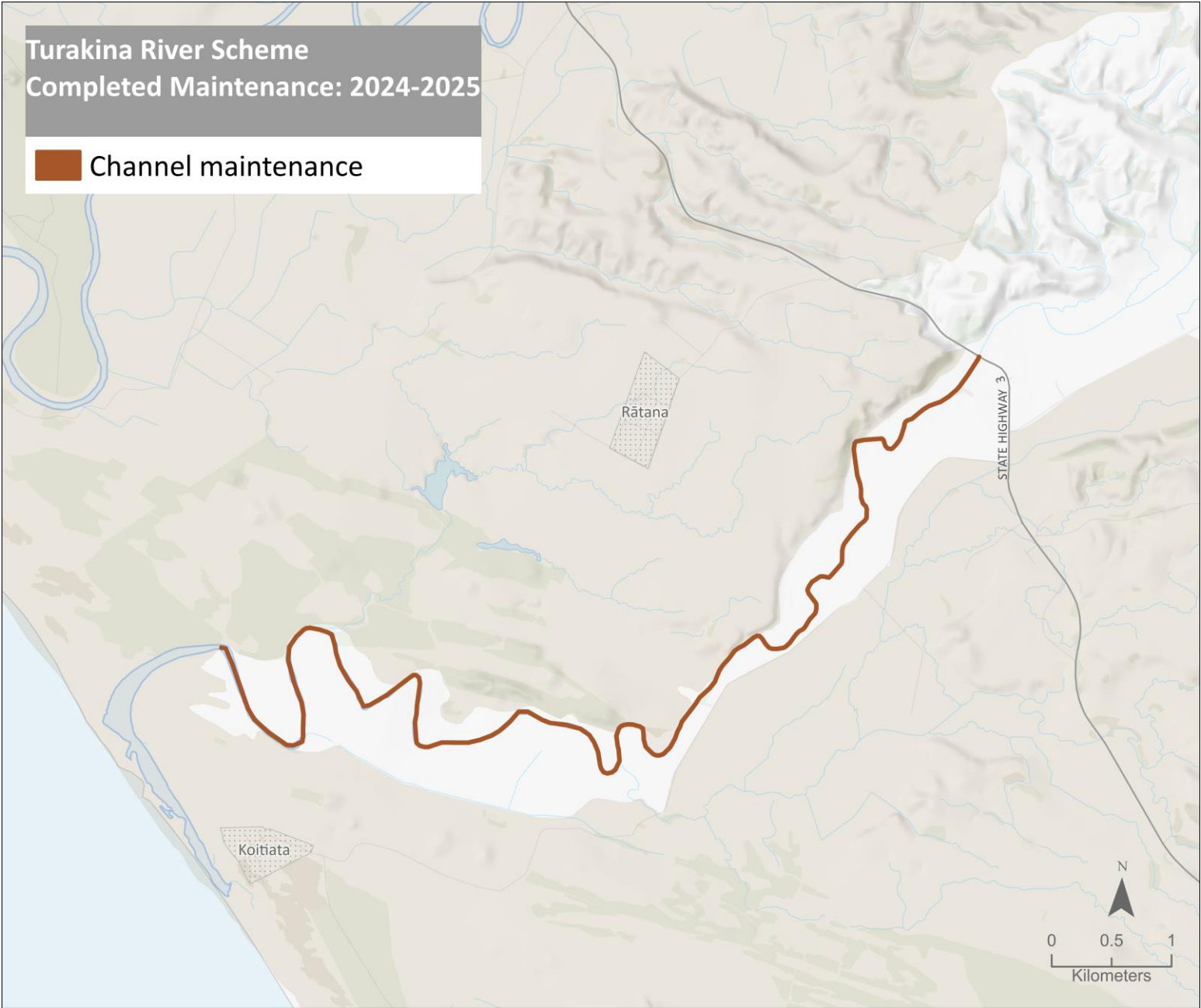
horizons.govt.nz

TURAKINA SCHEME – WORKS 2024-25

Budget expenditure:

- Maintenance approx. 157%;
- No assets so no repairs budget.

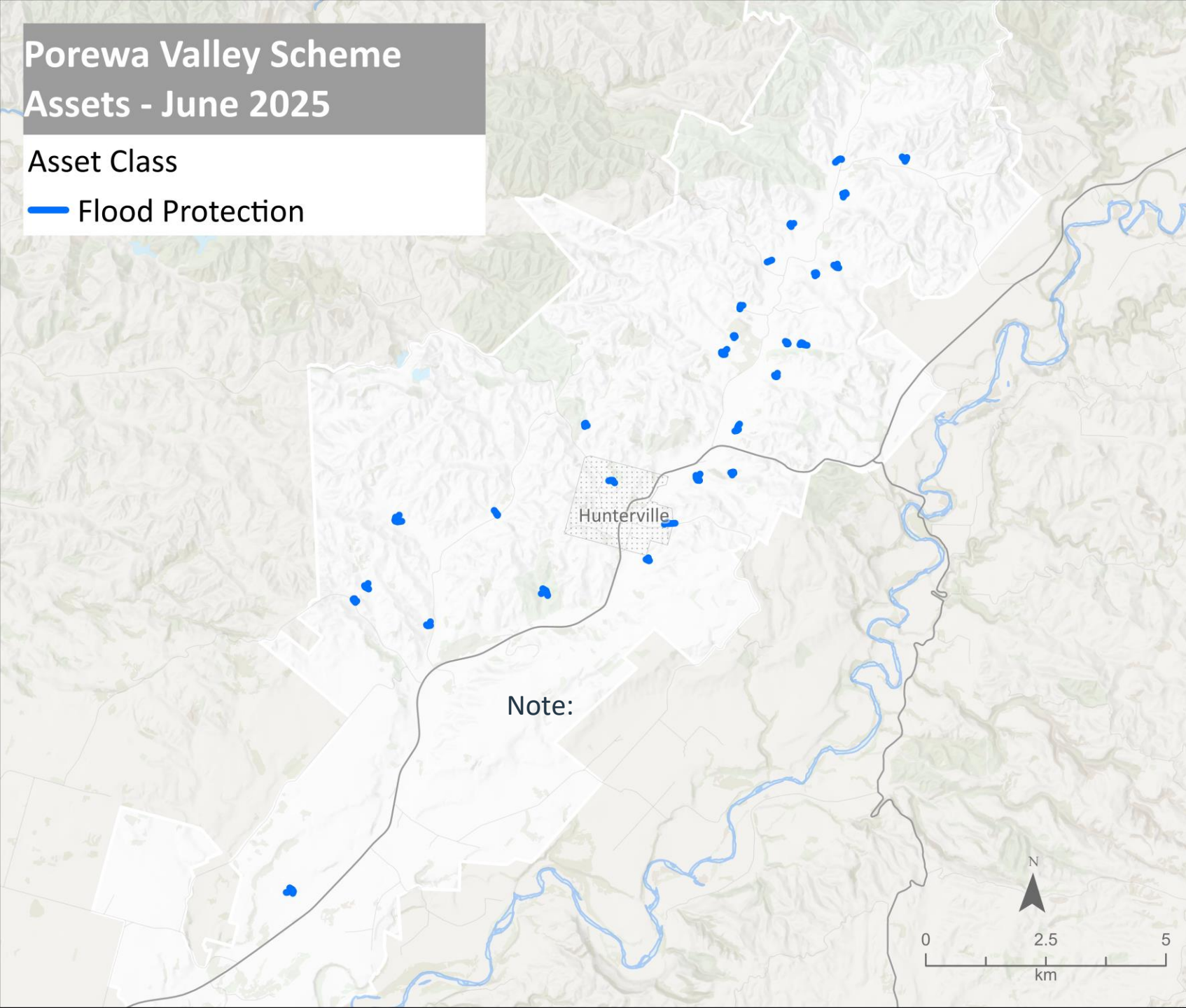
Scheme maintenance	Asset quantity	Works completed	Percent
Drains (km)			
Floodgates (#)			
Stopbanks (km)			
River channel (km)		13	
River edge protection (km)			
Dams (#)			
Pump stations (#)			
Weirs (#)			
Amenity (#)			
Flood barrier (#)			



Porewa Valley Scheme Assets - June 2025

Asset Class

— Flood Protection



POREWA SCHEME

ASSETS

- Scheme assets include 27 Dams
- The scheme also completes some channel maintenance.
- Some areas where channel maintenance occurs may not be shown on the map.

Note: Areas of the Porewa Scheme are identified in the One Plan Environmental Code of Practice permitted activity rules and some areas are not.

This means consents are required for some works.



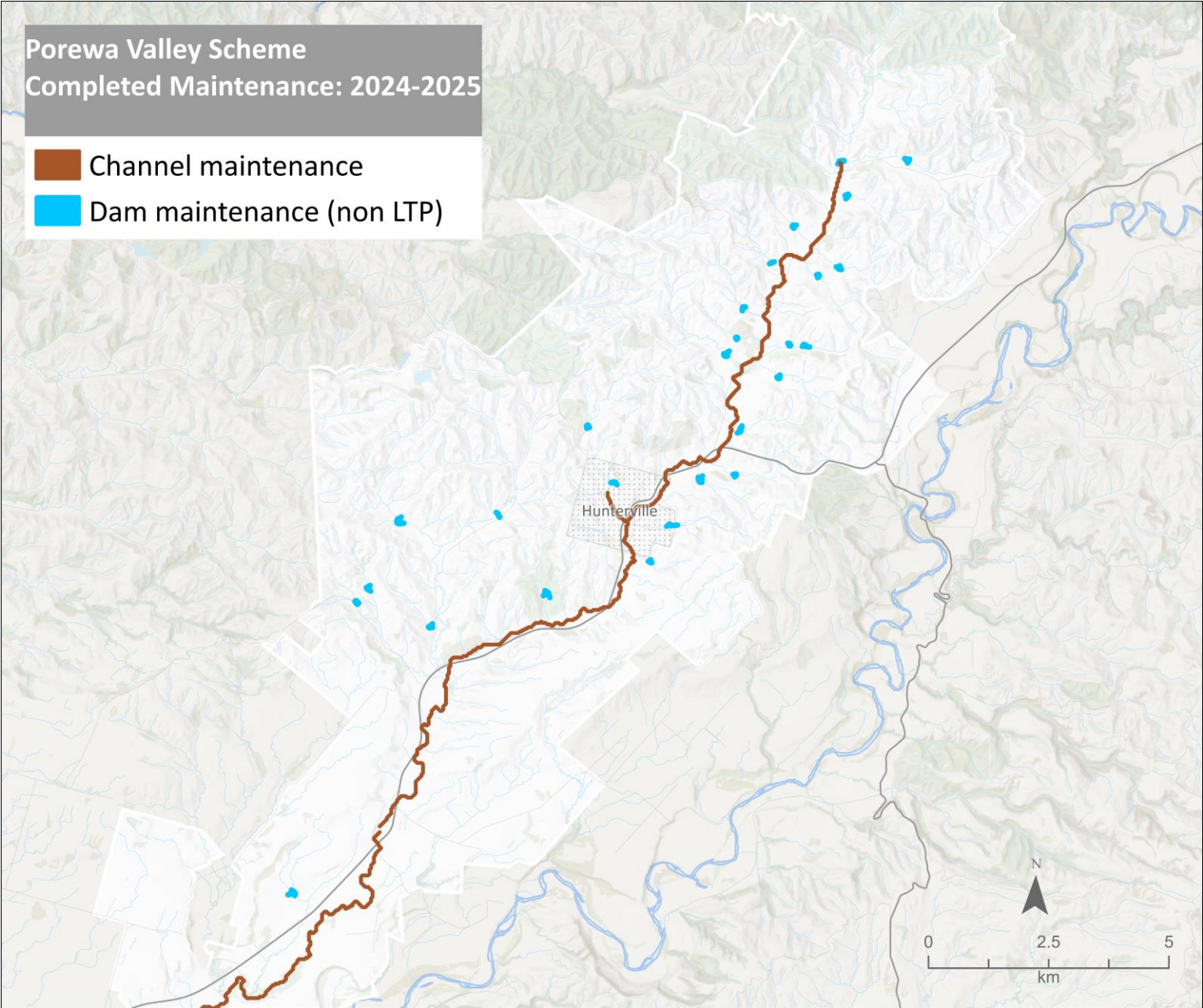
horizons.govt.nz

POREWA SCHEME – WORKS 2024-25

Budget expenditure:

- Maintenance approx. 181% (Dam Compliance Cost);
- Repairs approx. 24%; and
- Some repair budget reallocated to further maintenance.

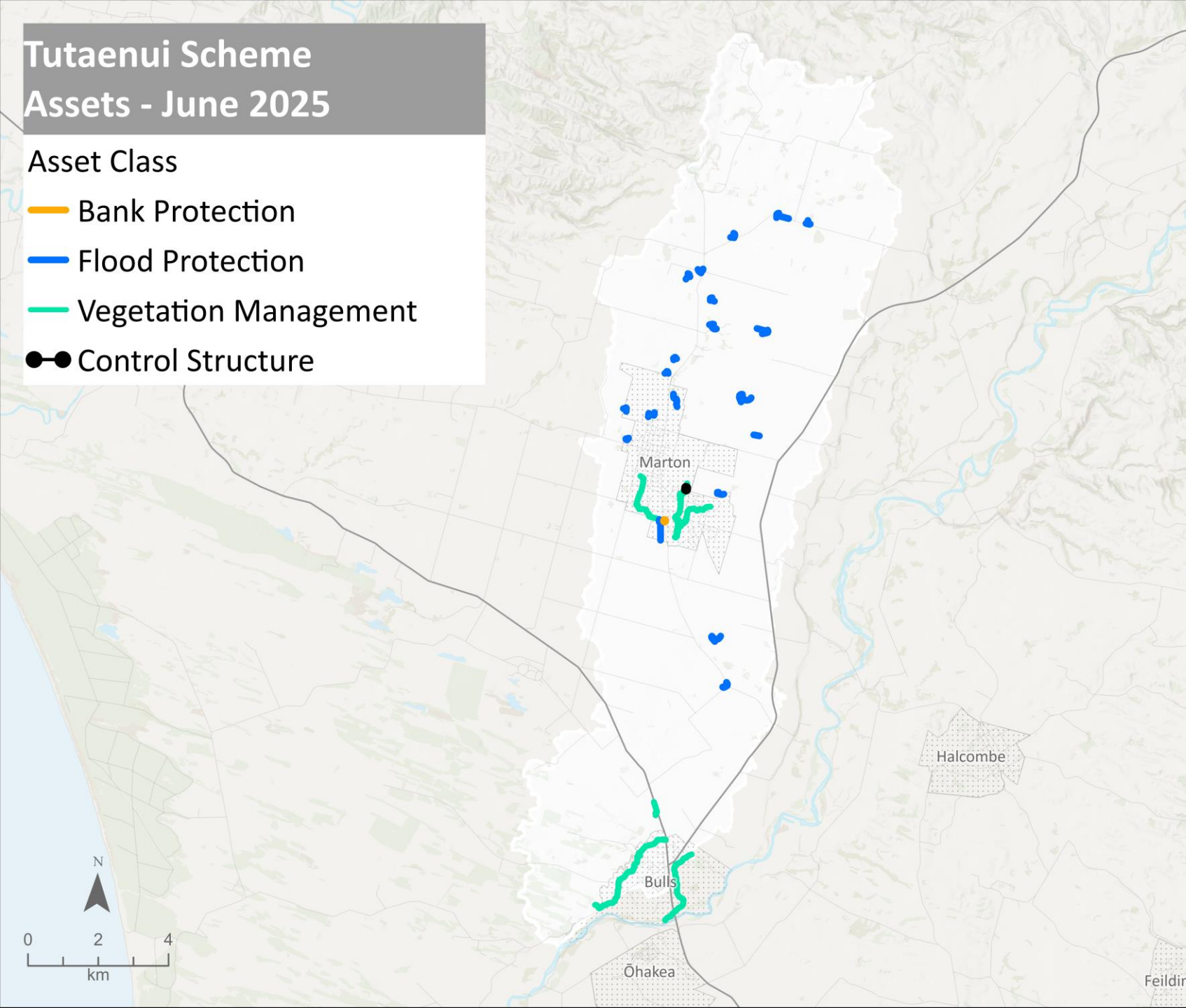
Scheme maintenance	Asset quantity	Works / checks	Percent
Drains (km)			
Floodgates (#)			
Stopbanks (km)			
River Channel (km)		3	
River edge protection (km)			
Dams (#)	27	161	596%
Pump stations (#)			
Weirs (#)			
Amenity (#)			



Tutaenui Scheme Assets - June 2025

Asset Class

- Bank Protection
- Flood Protection
- Vegetation Management
- Control Structure



TUTAENUI SCHEME

ASSETS

Scheme assets include:

- 12 km of drains
- 0.4 km of stopbanks
- 18 dams
- 2 weirs

This scheme also completes channel maintenance and some areas where this occurs may not be shown on the map.



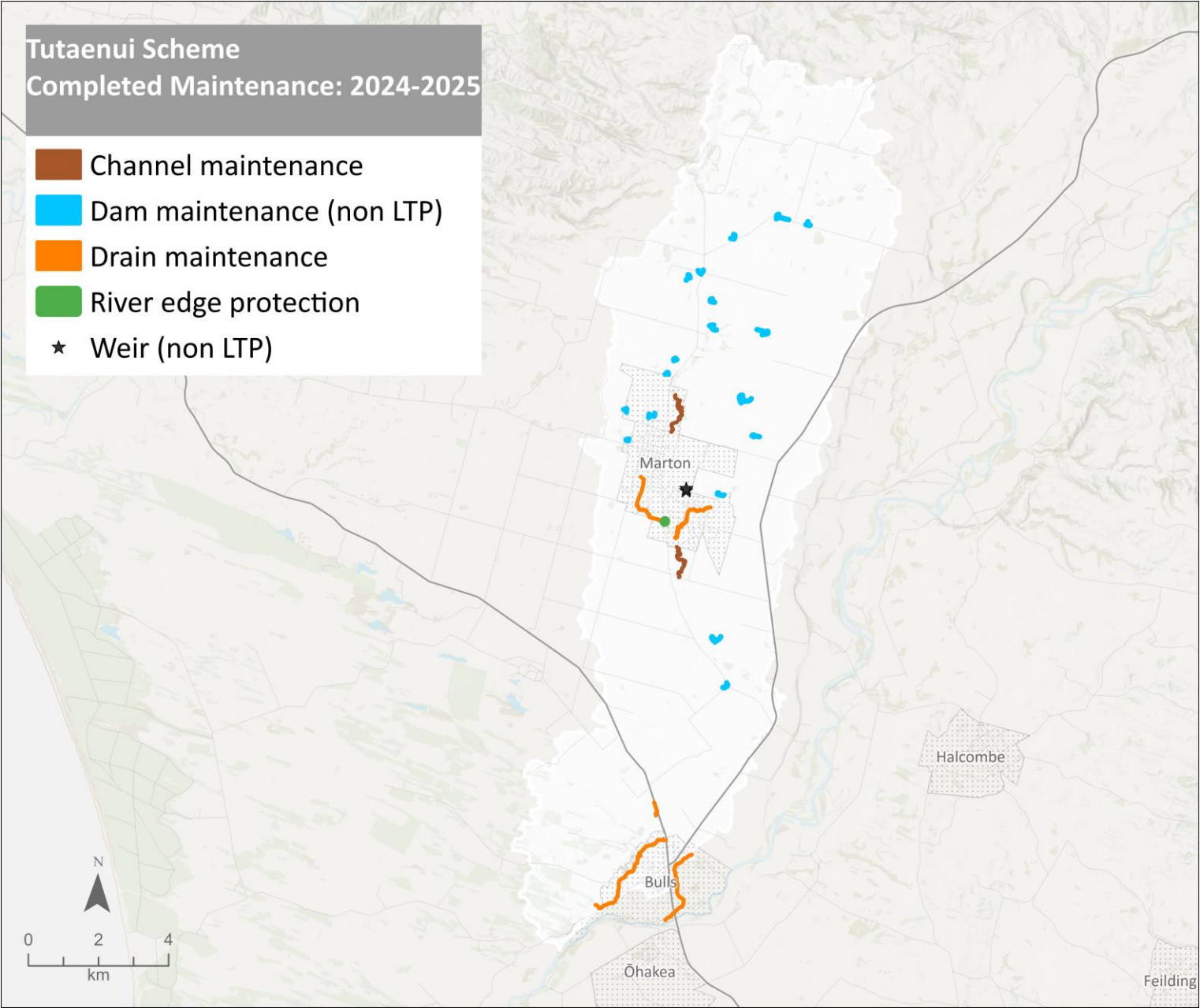
horizons.govt.nz

TUTAENUI SCHEME – WORKS 2024-25

Budget expenditure:

- Maintenance approx. 162% (Dam Compliance Cost);
- Repairs approx. 93%; and
- Some repair budget reallocated to further maintenance.

Scheme maintenance	Asset quantity	Works / checks	Percent
Drains (km)	12	18.6	155%
Floodgates (#)			
Stopbanks (km)	0.4	0	0%
River Channel (km)		3.2	
River edge protection (km)			
Dams (#)	18	102	567%
Pump stations (#)			
Weirs (#)	2	2	100%
Amenity (#)			
Flood barrier (#)			



Makirikiri Scheme Assets - June 2025

Asset Class

- Flood Protection
- Vegetation Management
- Control Structure

Note: Areas of the Makirikiri Scheme are identified in the One Plan Environmental Code of Practice permitted activity rules and some areas are not.

This means consents are required for some works.

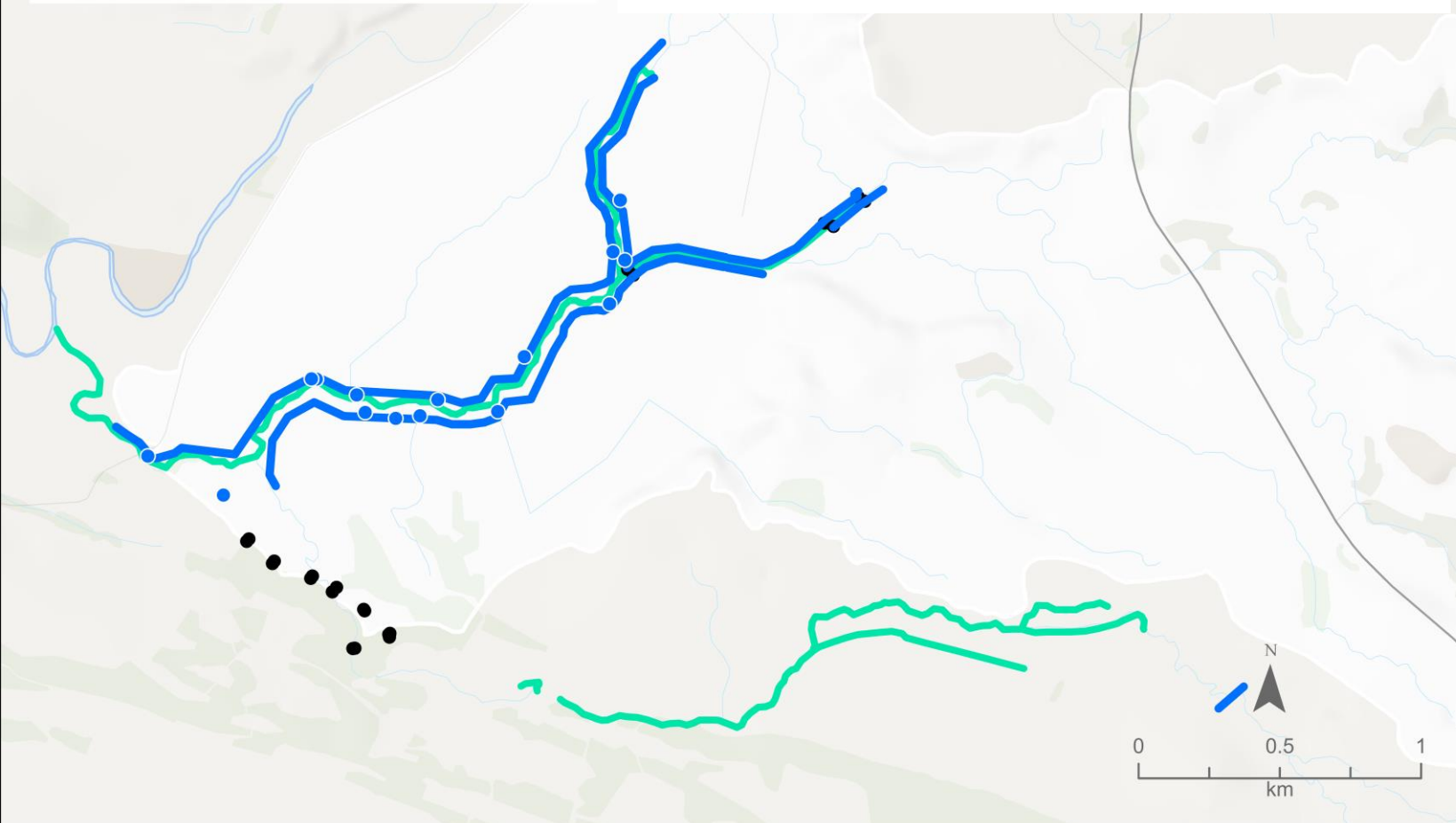
MAKIRIKIRI SCHEME

ASSETS

Scheme assets include:

- 3.2 km of drains
- 14 floodgates
- 7.2 km of stopbank
- 1 dams
- 11 weirs

This scheme also completes channel maintenance and some areas where this occurs may not be shown on the map.

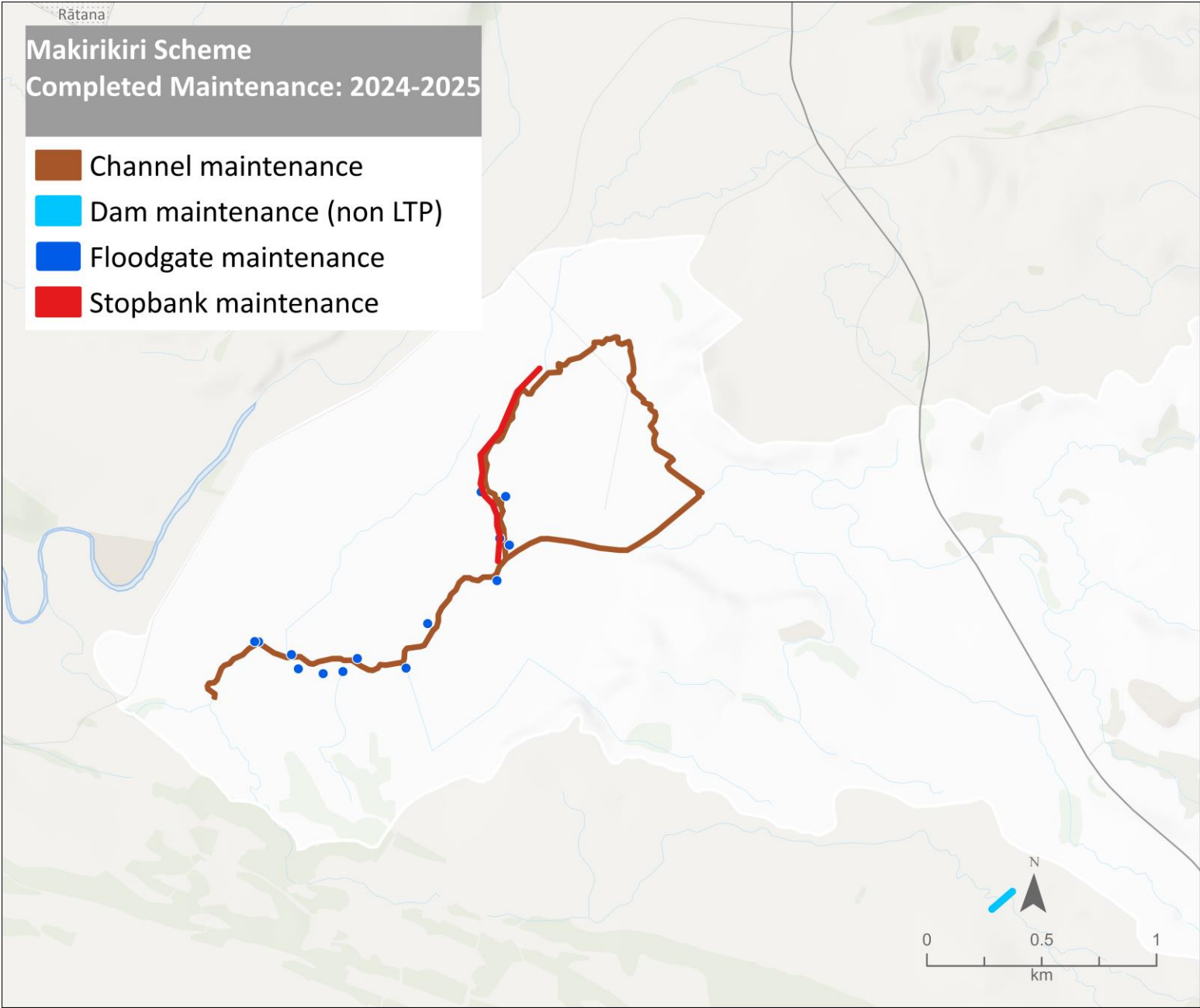


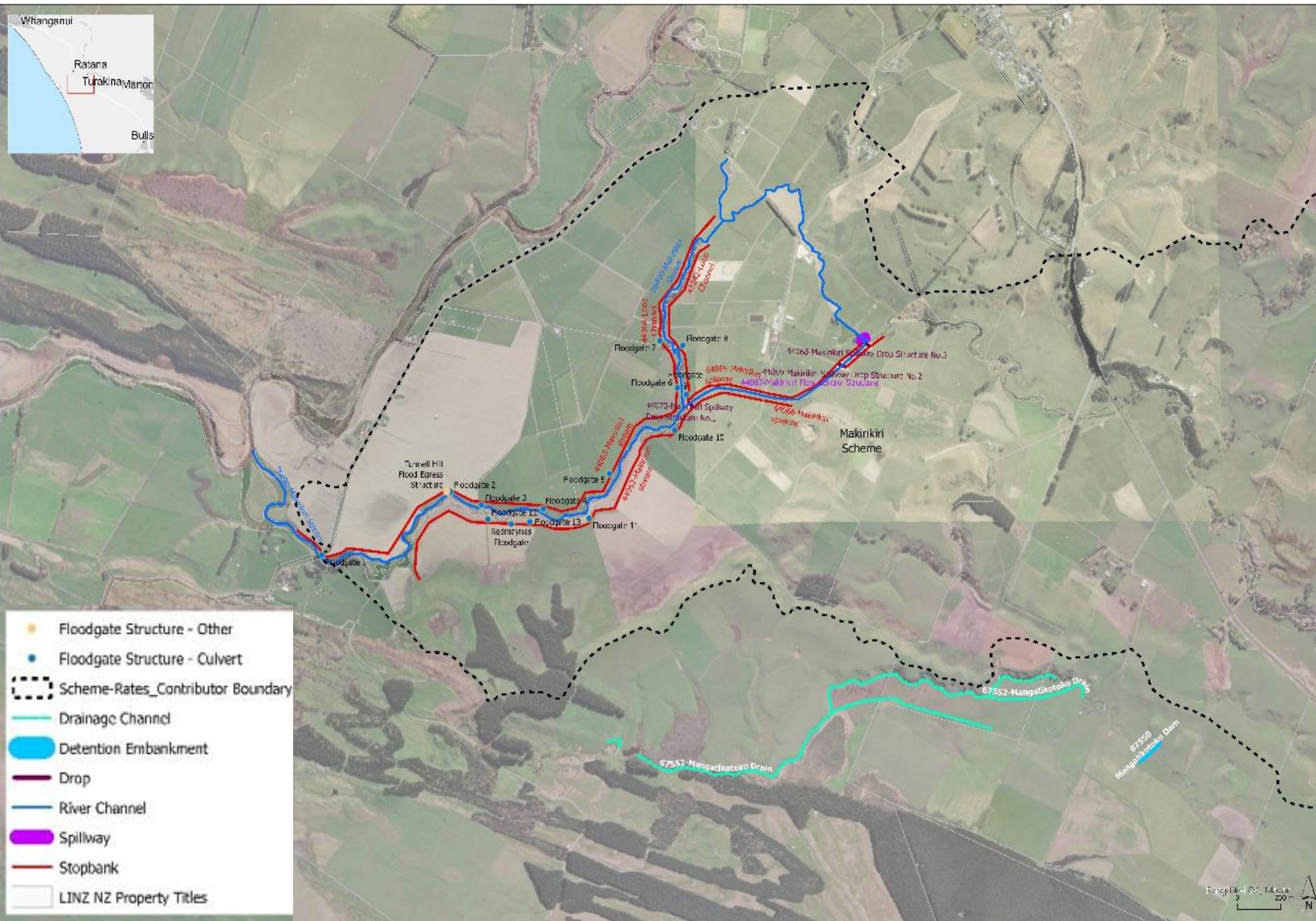
MAKIRIKIRI SCHEME – WORKS 2024-25

Budget expenditure:

- Maintenance approx. 38%; and
- Repairs approx. 126%.

Scheme maintenance	Asset quantity	Works / checks	Percent
Drains (km)	3.2	0	
Floodgates (#)	14	14	100%
Stopbanks (km)	7.2	0.8	11%
River channel (km)		11.9	
River edge protection (km)			
Dams (#)	1	3	300%
Pump stations (#)			
Weirs (#)	11	0	0%
Amenity (#)			
Flood barrier (#)			





MAKIRIKIRI SCHEME

FURTHER INFO.

Consenting challenges:

- Limited work can be done under One Plan.
- More extensive works require consent (for example mechanical cleaning).

MAKIRIKIRI

Prepared by: Horizon
Date: 28/02/2025. Not for
Construction Copyright Reserved



horizons.govt.nz



MAKIRIKIRI SCHEME RATING MAP AND SCHEME EXTENSION RESOLUTIONS

The Makirikiri Scheme has several methods by which works are funded including:

- Direct rating; and
- Funding via general rates and landowner share.

The scheme was extended in November 2018.



At the 27 November 2018 Council Meeting, recommendation COP 18-95 c and d, Makirikiri Scheme Modifications, Report No. 18-204, was amended as follows: Recommendations a & b remained unchanged from the Catchment Operations Committee meeting, 14 November, 2018.

COP 18-95

Moved

Burnell/Gordon

That the Committee recommends that Council:

- receives the information contained in Report No. 18-204 and Annex;*
- supports an extension of the Makirikiri Flood Control Scheme to include various flood control, erosion control and drainage assets within the Mangatikotoko Stream tributary catchment;*
- notes the proposed funding arrangements and the use of general reserves;*
- instructs the Group Manager River Management to make provision in the Draft 2019-20 Annual Plan for the proposed scheme extension.*

CARRIED

- 7.16. Extending the Makirikiri Scheme to encompass the waterway and those assets is seen as the best option, ensuring proper asset management practices are applied with secure funding for proactive maintenance.
- 7.17. Discussions with the affected landowner have identified a preference for a 'hybrid' approach whereby the costs of asset inspection, engineering advice and asset management / insurance would be funded through scheme and general rates, while any maintenance activity would attract only general rate input, with the balance of 80% of costs funded by cash payments on an as-required basis.
- 7.18. With this in mind, it is proposed that no changes are made to the present scheme rating system; while the extension will result in some additional inspection / management costs these are considered to be minimal (estimated to be \$1,000 per year), noting that Tunnel Hill are already a substantial Makirikiri Scheme ratepayer.
- 7.19. Such an arrangement is unconventional for Horizons and not without its challenges but is also seen as the best arrangement for drawing a line under further environmental grant assistance. Note that the original tunnel that the property draws its name from would not become a scheme asset – the brick-lined tunnel through a sand-dune is historic, built originally to power a flax mill.

Scheme extension paper

<https://www.horizons.govt.nz/HRC/media/Media/Agenda-Reports/Catchment-Operations-Committee-2018-11-12/18204%20Makirikiri%20Scheme%20Modification%20s.pdf>

Scheme extension resolutions

<https://www.horizons.govt.nz/HRC/media/Media/Minutes-Documents/Catchment-Operations-Committee-2018-11-12/Meeting%20Minutes%20November.pdf>

Forest Road Scheme Assets - June 2025

Asset Class

— Vegetation Management

●— Control Structure

FOREST ROAD

SCHEME ASSETS

Scheme assets include:

- 14.9 km of drains
- 1 weir



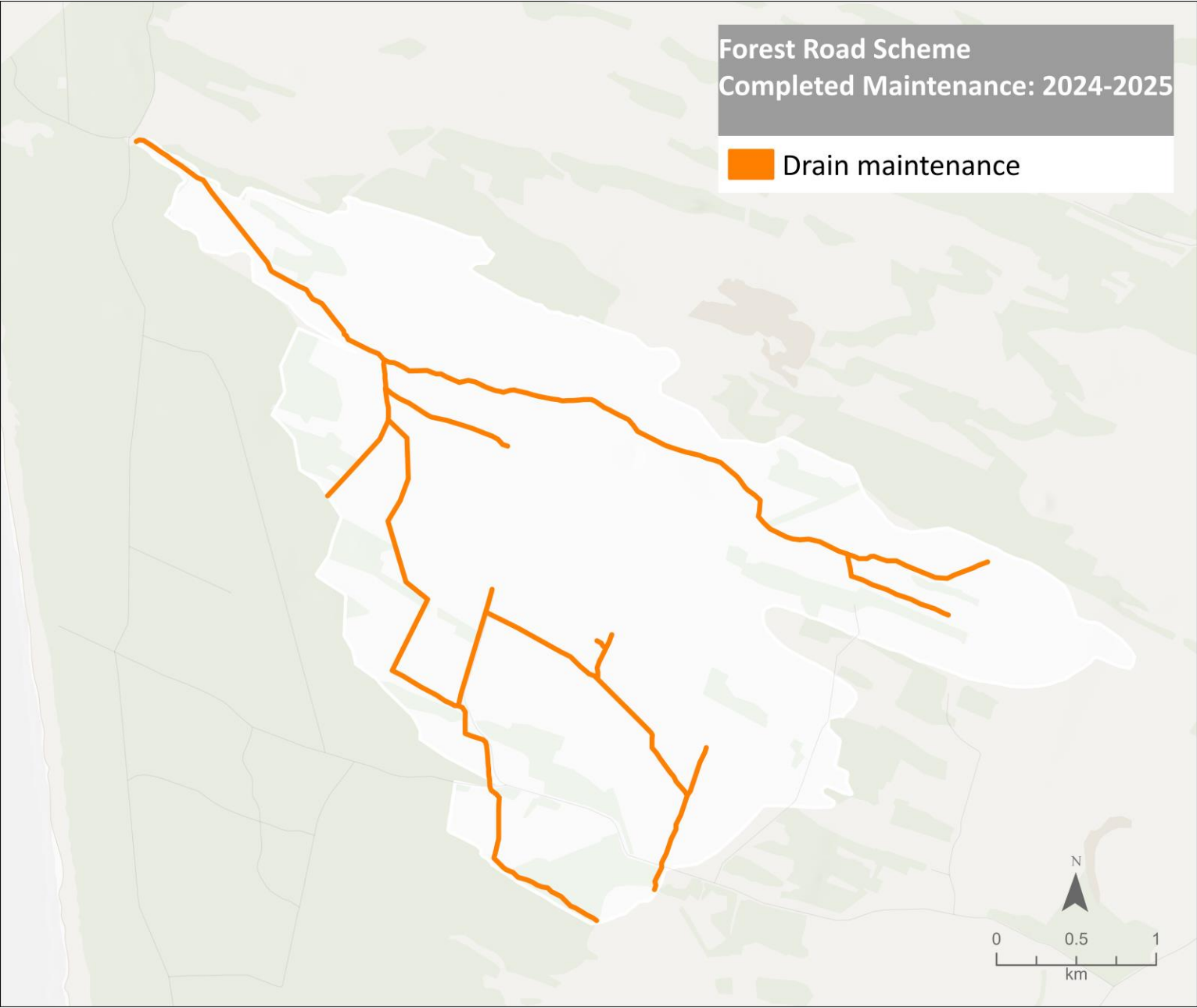
horizons.govt.nz

FOREST ROAD SCHEME – WORKS 2024-25

Budget expenditure:

- Maintenance approx. 126%;
- Repairs approx. 1%; and
- Some repair budget reallocated to further maintenance.

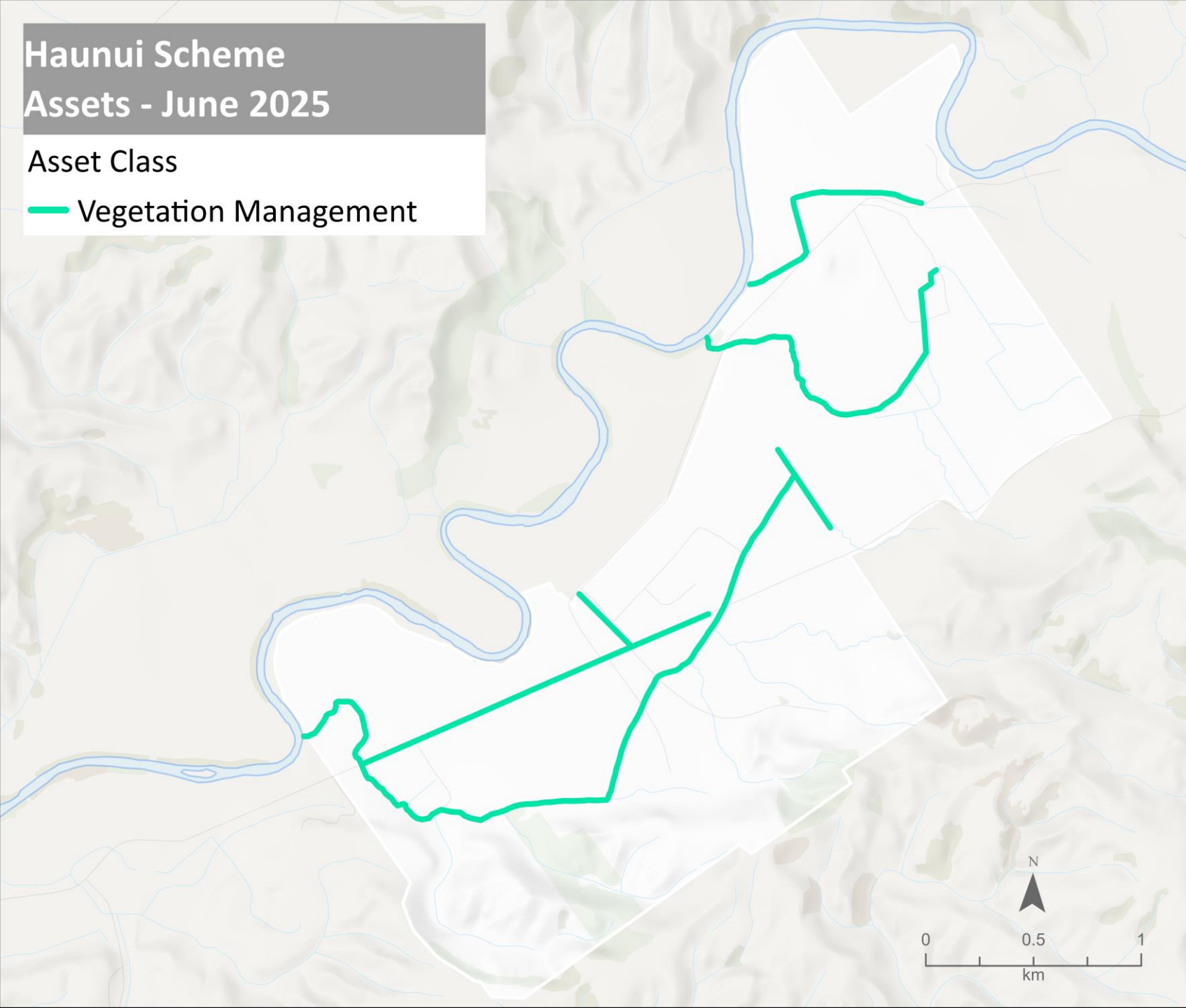
Scheme maintenance	Asset quantity	Works / checks	Percent
Drains (km)	14.9	44.6	300%
Floodgates (#)			
Stopbanks (km)			
River channel (km)			
River edge protection (km)			
Dams (#)			
Pump stations (#)			
Weirs (#)	1	0	0%
Amenity (#)			
Flood barrier (#)			



Haunui Scheme Assets - June 2025

Asset Class

— Vegetation Management



HAUNUI SCHEME

ASSETS

Scheme assets include:

- 8.8 km of drains



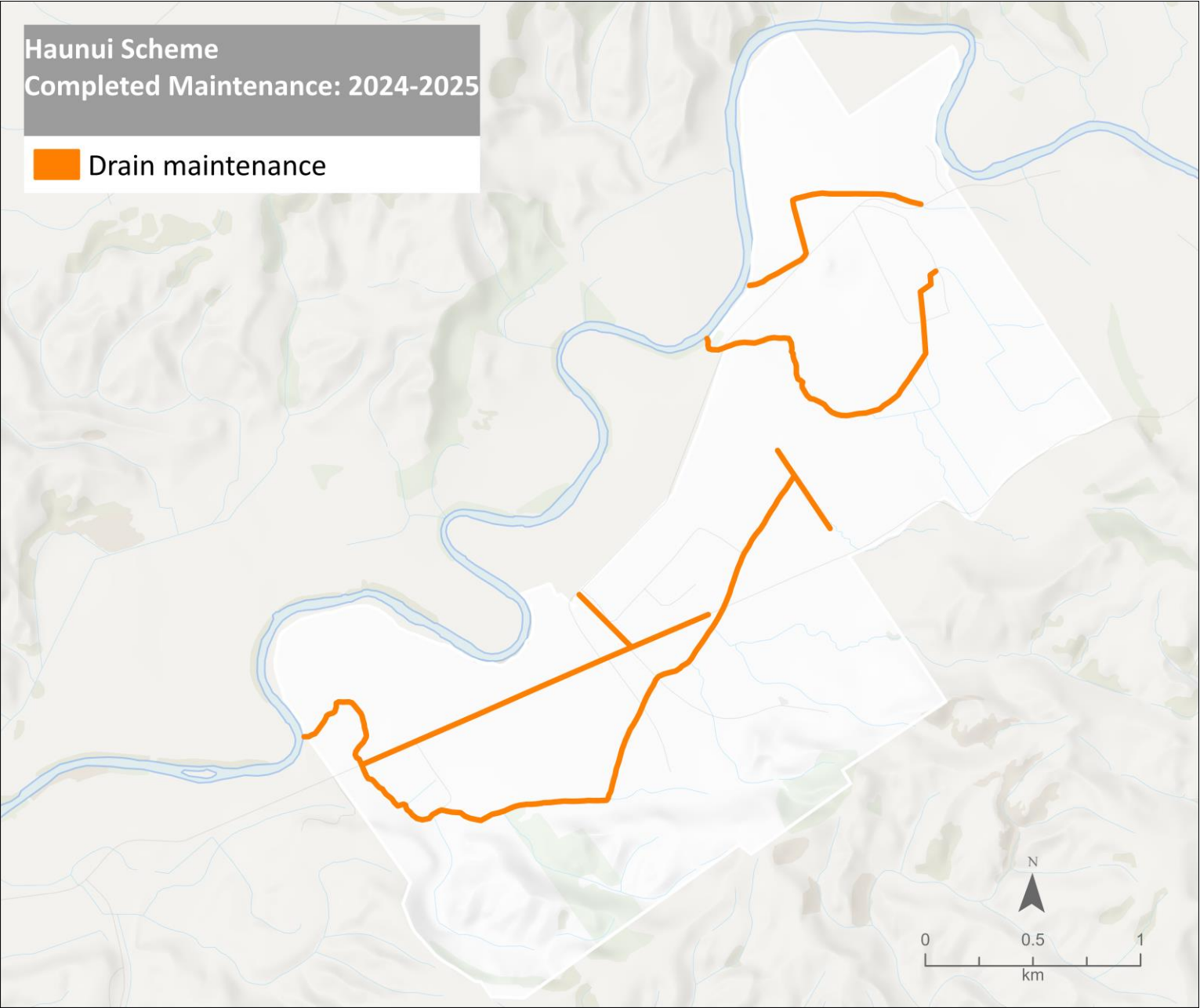
horizons.govt.nz

HAUNUI SCHEME – WORKS 2024-25

Budget expenditure:

- Maintenance approx. 85%; and
- Repairs approx. 18%.

Scheme maintenance	Asset quantity	Works completed	Percent
Drains (km)	8.8	17.5	198%
Floodgates (#)			
Stopbanks (km)			
River channel (km)			
River edge protection (km)			
Dams (#)			
Pump stations (#)			
Weirs (#)			
Amenity (#)			
Flood barrier (#)			





horizons

REGIONAL COUNCIL



For more information visit www.horizons.govt.nz
or freephone Horizons on **0508 800 800**