



Photo: one of the Pakihi Valley scheme dams



## **RUAPEHU DISTRICT SCHEMES MEETING**

**23<sup>rd</sup> February 2026**

**The Peaks, Ohakune**

# Scheme Meetings Dates and Venues

	<b>Scheme</b>	<b>Date</b>	<b>Time</b>	<b>Venue</b>
<b>MANAWATŪ DISTRICT</b>	Pohangina-Ōroua River Control, Lower Kiwitea, Ashhurst	<b>19-Feb-26</b>	<b>9:00 AM</b>	Pohangina Hall
<b>TARARUA DISTRICT</b>	Mangatainoka, Upper Man/Lwer Mangahao, Tararua District Wide, Tawataia, South Eastern Ruahine	<b>19-Feb-26</b>	<b>1:00 PM</b>	The Village Hall, Woodville
<b>LOWER MANAWATŪ AREA</b>	Lower Manawatū, Manawatū Drainage, Kahuterawa Scheme, Te Kawau	<b>20-Feb-26</b>	<b>9:00 AM</b>	Kairanga Hall
<b>HOROWHENUA DISTRICT</b>	Moutoa Scheme, Whirokino, Himatangi, Hōkio, Ōhau-Manakau, Foxton East, Koputaroa, Makerua	<b>20-Feb-26</b>	<b>1:00 PM</b>	Te Awahou Nieuwe Stroom, Teal Room, Foxton
<b>RUAPEHU DISTRICT</b>	Ruapehu District Wide, Ohakune, Pakihi, Upper Whanganui River, Whangaehu Mangawhero	<b>23-Feb-26</b>	<b>4:00 PM</b>	The Peaks Motor Inn Conference Centre, Ohakune
<b>RANGITĪKEI DISTRICT</b>	Turakina River, Tutaenui, Rangitikei, Pōrewa Forest Road, Huanui, Makirikiri	<b>26-Feb-26</b>	<b>9:00 AM</b>	Horizons Regional Council Marton Office
<b>LOWER WHANGANUI AREA</b>	Lower Whanganui River, Matarawa, Whangaehu-Mangawhero	<b>26-Feb-26</b>	<b>2:00 PM</b>	Whanganui War Memorial Centre, Pioneer Room

# PRESENTATION FORMAT

1. Proposed Regional Scheme Budgets 2026-2027
2. Regional Overview
3. Regional Maintenance and Repairs Summary
4. Overview of Local Schemes
5. Individual Scheme Works

# PROPOSED REGIONAL SCHEME BUDGETS 2026-2027



[horizons.govt.nz](https://horizons.govt.nz)

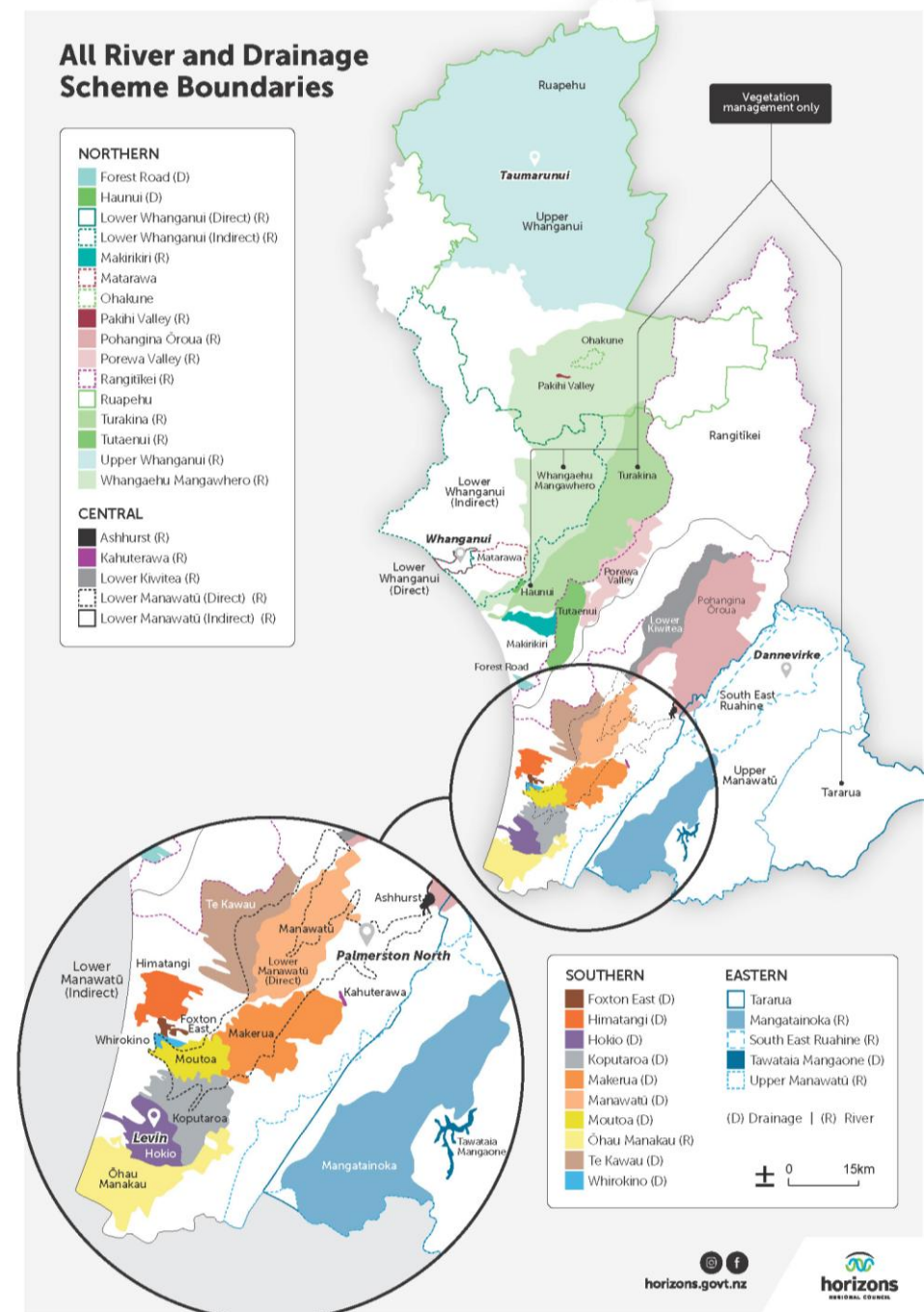
# Budget Methodology

## Operational budgets

- Starting point being current year budgets with updated insurance savings and lease income projections, govt. co-funding and Council decisions e.g. (Hōkio additional works).
- Updated staffing and internal costs (2 roles removed, staff funding via rates in the year rather than loan funding). Increased Kiwisaver.
- Considered revenue balances, potential to pay off loans, reserve provisions.
- Scheme meetings to provide guidance.
- Numbers include forecasts that may change.

## Capital budgets (\$7.11M)

- Provisioned for Te Pūwaha, Feilding, Mangaone.
- Rangiotu gates not provisioned for, however application into government for co-funding.



# River management proposed budgets 2026-27

	2025-26	2026-27	Movement (%)	Movement (\$)
<b>RM Schemes Funding</b>				
Targeted (Scheme) Rates	\$ 13,720,246	\$ 13,570,934	-1.1%	-\$ 149,312
General Rates	\$ 3,955,172	\$ 3,909,479	-1.2%	-\$ 45,693
<b>Total RM Schemes</b>	<b>\$ 17,675,418</b>	<b>\$ 17,480,413</b>	<b>-1.1%</b>	<b>-\$ 195,005</b>
<b>R&amp;D General</b>				
General Rates	\$ 1,547,062	\$ 1,660,943	7.4%	\$ 113,881
<b>Total Rates</b>				
<b>Total Rates Funding</b>	<b>\$ 19,222,480</b>	<b>\$ 19,141,356</b>	<b>-0.4%</b>	<b>-\$ 81,124</b>

	2025-26	2026-27	Movement (%)	Movement (\$)
Total Targeted Rates (\$)	\$ 13,720,246	\$ 13,570,934	-1.1%	-\$ 149,312
Total General Rates (\$)	\$ 5,502,234	\$ 5,570,422	1.2%	\$ 68,188
Total Targeted Rates (%)	71.4%	70.9%		
Total General Rates (%)	28.6%	29.1%		

Overall RM rates funding is proposed to reduce by 0.4%.

Note: \$2.552M of depreciation is not rated for.

Scheme committee feedback is a next step.

# Rate increases ranked

## Scheme rate increases:

- 29 Schemes < 5% increase.
- 9 of those are a decrease (<0).
- 5 schemes more than 5%.
- Makirikiri to rate fund again (reserve funded last 2 years).
- Council decisions (new work) driving Hōkio (31%) & Whanganui (9.3%).
- Dam costs driving Tutaenui (13%), Porewa (10%).
- Lower Manawatū Total (-6.0%), shown in 2 parts in table. Special project (-74%), general (+3.9%).

Schemes	2025/2026 (\$)	2026/27 Proposed (\$)	Difference (\$)	Difference (%)
Makirikiri	\$ 102	\$ 43,753	\$ 43,652	42892.45%
Hōkio	\$ 93,986	\$ 123,213	\$ 29,226	31.10%
Tutaenui	\$ 134,189	\$ 151,761	\$ 17,571	13.09%
Pōrewa Valley	\$ 136,452	\$ 150,175	\$ 13,723	10.06%
Lower Whanganui River	\$ 989,891	\$ 1,081,975	\$ 92,084	9.30%
Himatangi	\$ 32,458	\$ 34,044	\$ 1,586	4.89%
Kahuterawa	\$ 20,377	\$ 21,303	\$ 925	4.54%
Ashhurst Stream	\$ 28,659	\$ 29,769	\$ 1,110	3.87%
Lower Manawatū general (part 1 of 2)	\$ 6,419,093	\$ 6,671,271	\$ 252,178	3.93%
Koputaroa	\$ 362,764	\$ 373,798	\$ 11,033	3.04%
Pohangina-Ōroua	\$ 560,017	\$ 574,876	\$ 14,859	2.65%
Rangitikei River	\$ 1,235,236	\$ 1,261,066	\$ 25,830	2.09%
Whangaehu-Mangawhero	\$ 72,532	\$ 73,734	\$ 1,202	1.66%
Whirokino	\$ 56,329	\$ 57,258	\$ 930	1.65%
Tawataia-Mangaone	\$ 30,715	\$ 31,175	\$ 459	1.50%
Moutoa	\$ 505,429	\$ 512,958	\$ 7,529	1.49%
Te Kawau	\$ 389,897	\$ 395,339	\$ 5,443	1.40%
Ruapehu DC	\$ 313,149	\$ 317,459	\$ 4,310	1.38%
Tararua	\$ 381,295	\$ 386,334	\$ 5,039	1.32%
Ohakune	\$ 79,377	\$ 80,357	\$ 980	1.23%
Turakina	\$ 60,132	\$ 60,858	\$ 726	1.21%
Manawatū Drainage	\$ 1,233,522	\$ 1,246,609	\$ 13,087	1.06%
S E Ruahines	\$ 685,833	\$ 689,769	\$ 3,936	0.57%
Mangatainoka	\$ 639,353	\$ 642,942	\$ 3,589	0.56%
Upper Whanganui	\$ 157,708	\$ 158,457	\$ 749	0.47%
Matarawa	\$ 125,007	\$ 125,396	\$ 389	0.31%
Foxton East	\$ 47,921	\$ 47,720	-\$ 202	-0.42%
Forest Road	\$ 28,461	\$ 28,287	-\$ 174	-0.61%
Haunui	\$ 25,645	\$ 25,407	-\$ 238	-0.93%
Makerua	\$ 847,124	\$ 838,478	-\$ 8,645	-1.02%
Ōhau-Manakau	\$ 497,458	\$ 482,936	-\$ 14,522	-2.92%
Upper Manawatū-Lower Mangahao	\$ 358,472	\$ 339,607	-\$ 18,865	-5.26%
Lower Kiwitea	\$ 171,701	\$ 162,113	-\$ 9,588	-5.58%
Pakihi Valley	\$ 18,988	\$ 16,579	-\$ 2,409	-12.69%
Lower Manawatū Sp Project (part 2 of 2)	\$ 936,146	\$ 243,639	-\$ 692,507	-73.97%
<b>Total RM Schemes</b>	<b>\$ 13,720,246</b>	<b>\$ 13,570,934</b>	<b>-\$ 149,312</b>	<b>-1.09%</b>
<b>Total RM General</b>	<b>\$ 3,955,172</b>	<b>\$ 3,909,479</b>	<b>-\$ 45,693</b>	<b>-1.16%</b>
<b>Total River Management</b>	<b>\$ 17,675,418</b>	<b>\$ 17,480,413</b>	<b>-\$ 195,005</b>	<b>-1.10%</b>

# REGIONAL OVERVIEW



[horizons.govt.nz](https://horizons.govt.nz)

# MAINTENANCE / REPAIRS DELIVERY LAST YEAR - TO 30 JUNE 2025

- New maintenance-based programme introduced.
- Settled weather has assisted the years activity. Some of the repairs budget was redirected to maintenance.
- End of year results show 117% of maintenance budget spent, 57% of repairs budget.

Regional summary	Asset quantity	Completed Works / checks	Percentage	Notes Some areas maintained more than once
Drains (km)	1,149	1,955	170%	Mostly spray, some mechanical
Floodgates (#)	755	1,114	148%	Maintenance and/or checks
Stopbanks (km)	506	982	194%	Mostly mowing
River channel (km)		454		Includes aerial spraying, gravel management
River edge protection (km)	614	118	19%	Willow maintenance
Dams (#)	54	291	539%	Maintenance and/or checks
Pump stations (#)	24	69	288%	Maintenance and/or checks
Weirs (#)	77	5	6%	Maintenance
Amenity (#)	20	2	10%	Maintenance
Flood barrier (#)	10	4	40%	Maintenance and/or checks

# REGIONAL MAINTENANCE AND REPAIRS SUMMARY – 34 SCHEMES

- Results July to December 2025 shown below.
- Progress results to date show 42% of maintenance budget spent, 29% of repairs budget spent.

Regional summary	Asset quantity	Completed Works / checks	Percentage	Notes Some areas maintained more than once
Drains (km)	1,149	309	27%	Mostly spray, some mechanical
Floodgates (#)	755	553	73%	Maintenance and/or checks
Stopbanks (km)	506	550	109%	Mostly mowing
River channel (km)		164		Includes aerial spraying, gravel management
River edge protection (km)	614	15	2%	Willow maintenance
Dams (#)	54	169	313%	Maintenance and/or checks
Pump stations (#)	24	44	183%	Maintenance and/or checks
Weirs (#)	77	2	3%	Maintenance
Amenity (#)	20		0%	Maintenance
Flood barrier (#)	10		0%	Maintenance and/or checks



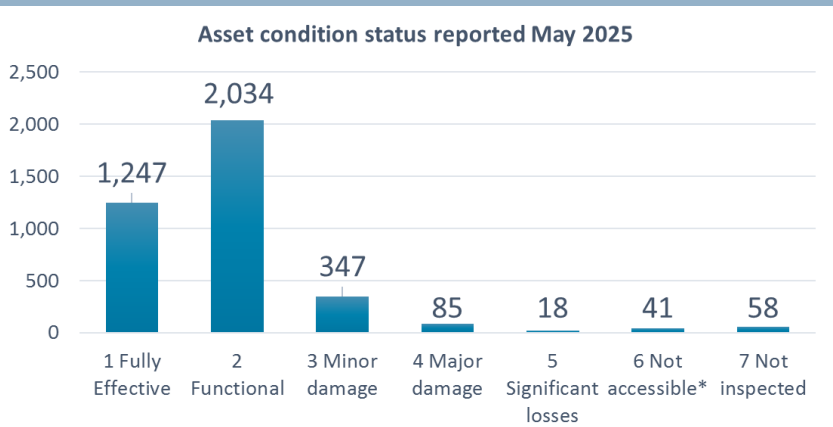
# ASSET CONDITION AND ASSET DEFECTS - AS AT MAY 2025

### Regional Overview

- Over 3,800 assets valued at over \$1.2 Billion.
- Maximum insurance claim per event is up to \$0.1 Billion.
- Assets insured total \$0.811 Billion.
- Single asset management plan produced to replace 27 plans (more efficient, to be updated annually).

### Regional Asset Condition

- 103 (5%) of assets have major or significant damage.
- A further 347 (9%) have minor damage.



Category	Count
1 Fully Effective	1,247
2 Functional	2,034
3 Minor damage	347
4 Major damage	85
5 Significant losses	18
6 Not accessible*	41
7 Not inspected	58

### Regional Asset Defects

- 477 assets at least one of the 1,104 known defects.
- Capacity and information systems are limiting defects management. The Annual Plan has prioritised this.

Defects reporting by area	Number of assets (total)	Number of assets with active defects	Number of active defects
Eastern	812	70	105
Northern	562	42	77
Southern	1,244	92	197
Central	1,210	273	725
<b>Total</b>	<b>3,828</b>	<b>477</b>	<b>1,104</b>

### Example: Northern Schemes Asset Defects

- There are 562 assets.
- Of which 42 (7%) have at least one known defect.
- There are 77 known defects.

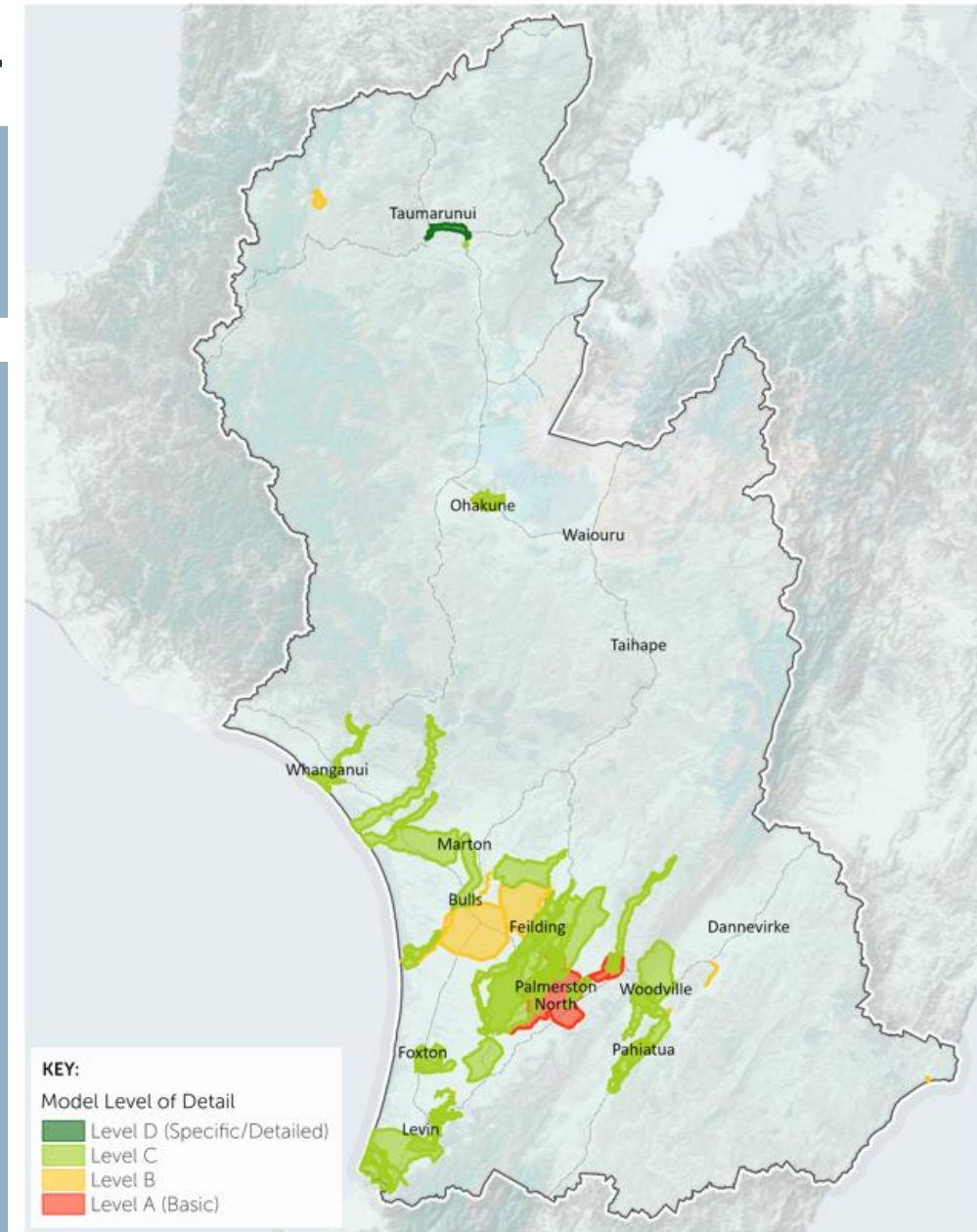
\* May 2025 reporting. <https://www.horizons.govt.nz/HRC/media/Media/Agenda-Reports/Integrated-Catchment-Committee-Folder/Integrated-Catchment-Committee-2025-14-05/2559%20Catchment%20Operations%20Group%20Regional%20Summary%20Report.pdf> Pages 63 to 65

# REGIONAL FLOOD VULNERABILITY ASSESSMENT

Has produced regional comparative models of flood vulnerability, previously there were 47 localised historic models with various levels of detail (see map).

## List of reports produced

- Horizons flood modelling and mapping guideline report.
- Flood modelling compilation and review, current state analysis report and Horizons modelling review.
- Flood protection assets review, asset condition and problem definition report.
- Flood frequency analysis report.
- Regional flood modelling for Horizons Flood Vulnerability Assessment report, regional model outputs.
- Flood vulnerability assessment report that includes regional, district, 52 towns and settlements summary.
- Lower Manawatū model report and model outputs.
- Moutoa Gates - model build report to support 2025-operational upgrades.



## Indicative Flood Model Levels and Domains (Approximation Only)

(Partial list, some models not shown)

0 10 20 40 km  
1:1,086,170



EXCLUSION OF LIABILITY ARISING FROM SUPPLY OF INFORMATION Horizons Regional Council endeavours to provide useful and accurate information. Horizons Regional Council shall not, however be liable whether in contract, tort, equity or otherwise, for any loss or damage of any type (including consequential losses) arising directly or indirectly from the inadequacy, inaccuracy or any other deficiency in information supplied irrespective of the cause. Use of information supplied is entirely at the risk of the recipient and shall be deemed to be acceptance of this liability exclusion.  
Contains Crown Copyright Data, Interpretation & Design Team - 12/02/2026

# OVERVIEW OF LOCAL SCHEMES



[horizons.govt.nz](https://horizons.govt.nz)

# OVERVIEW OF LOCAL SCHEMES – Current context

## New work programme

- Horizons and Ruapehu District Council have signed a joint working agreement.
- In September 2025, Council received Item 25-134 and approved an additional works.
- This was reported on in the Integrated Catchment Committee (11 Feb. 2026) report.
- Includes emerging issues Taumarunui landfill and Pakihi stream willow congestion.

## Rainfall events

- Rainfall events in Ruapehu during October 2025 and February 2026 have been responded to.
- The October 2025 event flooded multiple properties, no damage was received to Horizons Infrastructure.
- The Feb 2026 event is still being responded to, any reports of damage are welcome.

# OVERVIEW OF LOCAL SCHEMES

## Priorities for the year include:

- Responding to any high flow events as they occur.
- Assessing damage following the Feb flooding.
- Implementing a further year of the maintenance-based programme.
- Implementing the additional work programme approved by Council.
- Operating within regulatory frameworks & progressing consenting requirements.
- Using asset information to prioritise repairs, upgrading tracking of defects.
- Reviewing the findings of the flood vulnerability assessment and assessing next steps.
- Emergency management/ response training.
- Implementing smaller capital programme including:
  - Te Pūwaha (Whanganui)
  - Te Arakura & Reid Line (Feilding)
  - Mangaone Stream (Palmerston North).

# INDIVIDUAL SCHEME WORKS REPORTING



[horizons.govt.nz](https://horizons.govt.nz)

# RUAPEHU DISTRICT WIDE SCHEME



[horizons.govt.nz](https://www.horizons.govt.nz)

# OHURA ROAD FLOODING



Images of road flooding on Ohura Road.

Left: 12 June 2025, photo provided by local resident to Cr Riley.

Right: 28 August 2024 (Site 1), source WSP 2025.

# Actions Council approved - Ohura Road

Implement works to reduce the flooding / stormwater issues along Ohura Road near Matière.

## Action

1. Clearance of the roadside drain and vegetation directly up and downstream of road bridge at site 2.
2. Further investigation, consenting and implementation of the flap gate and culvert upgrade.
3. Consent and undertake willow and vegetation removal on the Ohura River and tributaries.
4. Formally request that RuDC further investigate road raising option and costings/funding models for this option and provide feedback to Horizons.

## Progress

1. Regulatory permissions requirements have been confirmed. Contractors being engaged to clear the roadside drains. Working with RuDC to organise traffic management. Works planned for March.
2. Flap gate/culvert upgrade has been raised with RuDC as a potential maintenance issue.
3. A formal request made to RuDC to further investigate the road raising option via the formal agreement.
4. The Ohura River willows have been assessed for permission requirements, currently seeking contractor quotes. Likely to proceed in a staged manner to reduce risk of erosion.

# OHURA ROAD FLOODING



Overview of the sites where the Ohura Road floods in the context of the local catchments and Ohura River.



# Ruapehu

## Rates

Up 1.4%.

## Drivers

Approx \$6k reduction in works.

## Reserves

Over \$218k, no target.

## Of note

Scheme traditionally underspends Programme approved to draw reserves. Could increase staff time to reflect additional work. Could reduce spend to have 0%. LTP resolution was reduce \$50k.

Potential for further flood gate replacements. Number of emerging issues (joint RDC work)

	2025-26	2026-27	Movement	
<b>Expenditure Schemes</b>				
Maintenance	\$116,522	\$119,617	2.7%	
Repairs	\$135,793	\$126,928	-6.5%	
Internal Cost (Staff, vehicle, etc)	\$60,834	\$70,914	16.6%	
Insurance	\$-	\$-	0.0%	
Reserve Contributions	\$-	\$-	0.0%	
External Cost (rates etc)	\$-	\$-	0.0%	
Loan Funding	\$-	\$-	0.0%	
Depreciation Funded	\$-	\$-		
<b>Sub total - Operational expenditure</b>	<b>\$313,149</b>	<b>\$317,459</b>	<b>1.4%</b>	
Capex	\$-	\$-	0.0%	
<b>Total Expenditure Schemes</b>	<b>\$313,149</b>	<b>\$317,459</b>	<b>1.4%</b>	
<b>Funding</b>				
Scheme Rates	\$250,519	\$253,967	1.4%	
General Rates	\$62,630	\$63,492	1.4%	
<b>Total Rates</b>	<b>\$313,149</b>	<b>\$317,459</b>	<b>1.4%</b>	
Capital Grant Funding	\$-	\$-	0.0%	
Loan Drawdowns	\$-	\$-	0.0%	
Reserve Drawdowns (Targeted + General)	\$-	\$-	0.0%	
Other (Leases and Rental)	\$-	\$-	0.0%	
<b>Total Revenue</b>	<b>\$313,149</b>	<b>\$317,459</b>	<b>1.4%</b>	
<b>Reserves</b>	<b>Closing Balance 30-6-25</b>	<b>Closing Balance 30-6-26</b>	<b>Closing Balance 30-6-27</b>	
Estimated EM Reserve Target		No reserve target		
Estimated EM Reserve Balance (Targeted Only)	\$ 202,413	\$ 210,611	\$218,614	
Difference			\$ 218,614	
Renewal Reserve Balance	\$ -	\$ -	\$ -	
<b>Loans</b>	<b>Closing Balance 30-6-25</b>	<b>Closing Balance 30-6-26</b>	<b>Closing Balance 30-6-27</b>	<b>Remaining Loan Period 30-6-27</b>
Loan Balances	\$-	\$-	\$-	0

# OHAKUNE SCHEME



[horizons.govt.nz](https://horizons.govt.nz)



# Actions Council approved – Ohakune Flood Risk

## Action

1. Obtain consents to undertake works within Ohakune.
2. Complete additional works to reduce the current flood risk within Ohakune.
3. Undertake a stocktake of all flood protection assets within Ohakune.
4. Undertake an assessment of the flood risk within Ohakune.

## Progress

1. Resource consent is being drafted aiming for submission by June 2026.
2. Vegetation clearance works are underway in Ohakune Scheme working with landowners and RuDC staff. On-track to spend the budget.
3. Contractors have been engaged to remove several fallen trees.
4. Assets stocktake is a “when capacity allows” matter, aiming for this calendar year.
5. The flood vulnerability assessment will provide some information on flood risk.



# Ohakune

## Rates

Up 1.2%.

## Drivers

Using \$2k reserves.

## Reserves

Over \$150k, no target.

## Of note

Work programme with approval to draw reserves.

Could increase staff time contribution to this scheme to reflect additional work.

Consenting underway – costs unknown.

	2025-26	2026-27	Movement	
<b>Expenditure Schemes</b>				
Maintenance	\$30,630	\$30,630	0.0%	
Repairs	\$24,504	\$24,504	0.0%	
Internal Cost (Staff, vehicle, etc)	\$24,243	\$27,223	12.3%	
Insurance	\$-	\$-	0.0%	
Reserve Contributions	\$-	\$-	0.0%	
External Cost (rates etc)	\$-	\$-	0.0%	
Loan Funding	\$-	\$-	0.0%	
Depreciation Funded	\$-	\$-		
<b>Sub total - Operational expenditure</b>	<b>\$79,377</b>	<b>\$82,357</b>	<b>3.8%</b>	
Capex	\$-	\$-	0.0%	
<b>Total Expenditure Schemes</b>	<b>\$79,377</b>	<b>\$82,357</b>	<b>3.8%</b>	
<b>Funding</b>				
Scheme Rates	\$63,502	\$64,285	1.2%	
General Rates	\$15,875	\$16,071	1.2%	
<b>Total Rates</b>	<b>\$79,377</b>	<b>\$80,357</b>	<b>1.2%</b>	
Capital Grant Funding	\$-	\$-	0.0%	
Loan Drawdowns	\$-	\$-	0.0%	
Reserve Drawdowns (Targeted + General)	\$-	\$2,000	0.0%	
Other (Leases and Rental)	\$-	\$-	0.0%	
<b>Total Revenue</b>	<b>\$79,377</b>	<b>\$82,357</b>	<b>3.8%</b>	
<b>Reserves</b>	<b>Closing Balance 30-6-25</b>	<b>Closing Balance 30-6-26</b>	<b>Closing Balance 30-6-27</b>	
Estimated EM Reserve Target		No reserve target		
Estimated EM Reserve Balance (Targeted Only)	\$ 138,547	\$ 144,158	\$ 148,036	
Difference			\$148,036	
Renewal Reserve Balance	\$ -	\$ -	\$ -	
<b>Loans</b>	<b>Closing Balance 30-6-25</b>	<b>Closing Balance 30-6-26</b>	<b>Closing Balance 30-6-27</b>	<b>Remaining Loan Period 30-6-27</b>
Loan Balances	\$-	\$-	\$-	0

# PAKAHI SCHEME



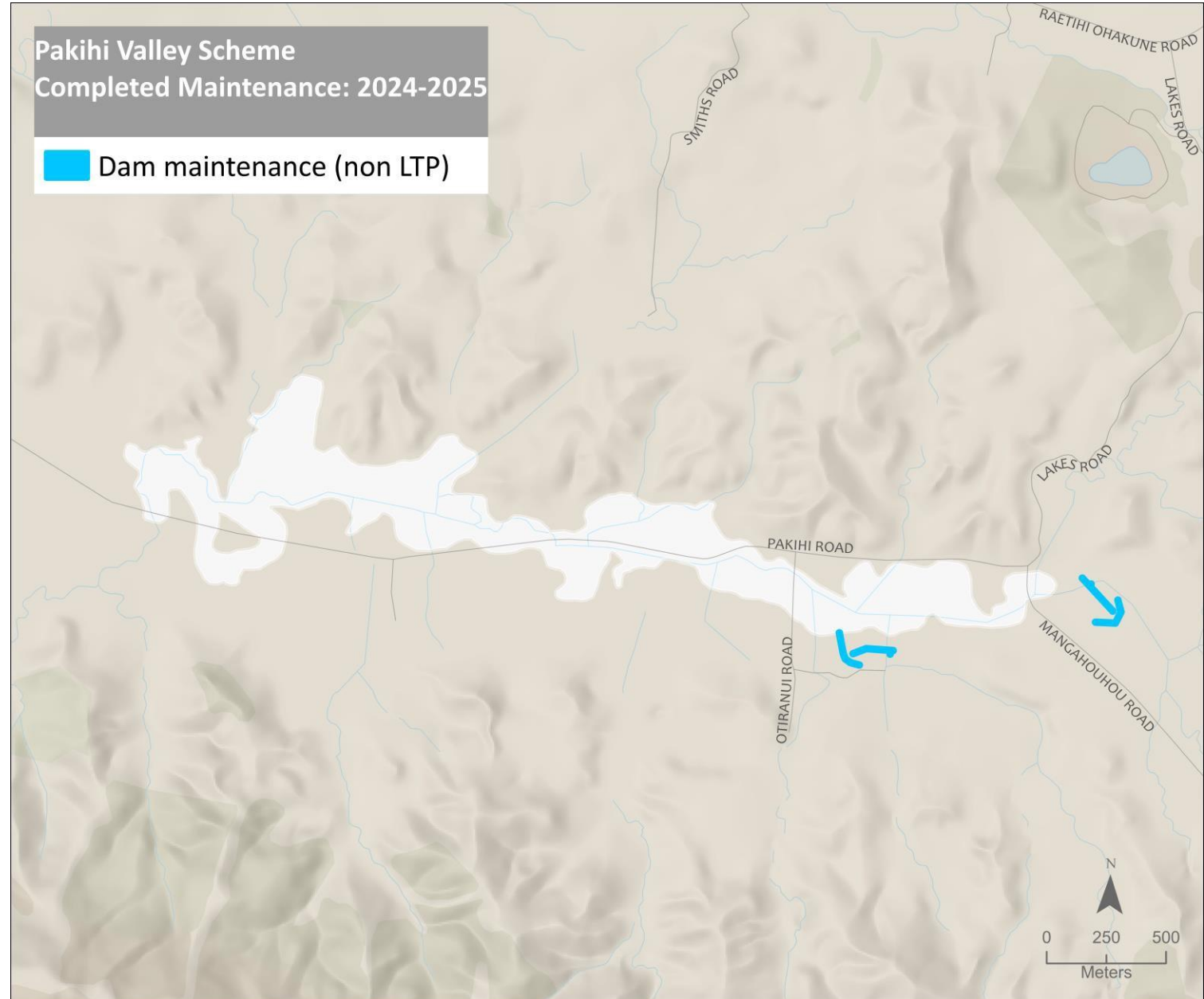
[horizons.govt.nz](https://horizons.govt.nz)

# PAKIHI VALLEY SCHEME WORKS 2024-25 (Last year)

**Budget expenditure:**

- Maintenance approx. 169%; and
- Repairs approx. 24%.

Regional summary	Asset quantity	Works / checks	Percent
Drains (km)			
Floodgates (#)			
Stopbanks (km)			
River Channel (km)			
River edge protection (km)			
Dams (#)	2	8	400%
Pump stations (#)			
Weirs (#)			
Amenity (#)			
Flood barrier			



# WORKS 2025-26: PAKIHI

## Works completed

- Maintenance and inspections of dams (bi-monthly).

## Works planned

- Channel clearance, Pakihi Road.

## Dam compliance update

- The Pakihi scheme has 2 dams.
- Potential Impact Classification (PIC) scores<sup>1</sup> for the Pakihi Scheme are low PIC.

<sup>1</sup> [Integrated Catchment Committee 11Feb2026](#)



# Pakihi Valley

## Rates

Down 12.7%.

## Drivers

Reduced insurance & reserve contributions.

## Reserves

Well above target. Target may need revisiting.

## Of note

Very small scheme.

	2025-26	2026-27	Movement	
<b>Expenditure Schemes</b>				
Maintenance	\$1,470	\$1,511	2.8%	
Repairs	\$2,924	\$2,924	0.0%	
Internal Cost (Staff, vehicle, etc)	\$7,564	\$8,498	12.4%	
Insurance	\$4,185	\$3,301	-21.1%	
Reserve Contributions	\$2,845	\$345	-87.9%	
External Cost (rates etc)	\$-	\$-	0.0%	
Loan Funding	\$-	\$-	0.0%	
Depreciation Funded	\$-	\$-		
<b>Sub total - Operational expenditure</b>	<b>\$18,988</b>	<b>\$16,579</b>	<b>-12.7%</b>	
Capex	\$-	\$-	0.0%	
<b>Total Expenditure Schemes</b>	<b>\$18,988</b>	<b>\$16,579</b>	<b>-12.7%</b>	
<b>Funding</b>				
Scheme Rates	\$15,190	\$13,263	-12.7%	
General Rates	\$3,798	\$3,316	-12.7%	
<b>Total Rates</b>	<b>\$18,988</b>	<b>\$16,579</b>	<b>-12.7%</b>	
Capital Grant Funding	\$-	\$-	0.0%	
Loan Drawdowns	\$-	\$-	0.0%	
Reserve Drawdowns (Targeted + General)	\$-	\$-	0.0%	
Other (Leases and Rental)	\$-	\$-	0.0%	
<b>Total Revenue</b>	<b>\$18,988</b>	<b>\$16,579</b>	<b>-12.7%</b>	
<b>Reserves</b>	<b>Closing Balance 30-6-25</b>	<b>Closing Balance 30-6-26</b>	<b>Closing Balance 30-6-27</b>	
Estimated EM Reserve Target		1684%	\$ 1,600	
Estimated EM Reserve Balance (Targeted Only)	\$22,776	\$25,698	\$26,951	
Difference			\$25,351	
Renewal Reserve Balance	\$-	\$ 1,983	\$ 2,059	
<b>Loans</b>	<b>Closing Balance 30-6-25</b>	<b>Closing Balance 30-6-26</b>	<b>Closing Balance 30-6-27</b>	<b>Remaining Loan Period 30-6-27</b>
Loan Balances	\$-	\$-	\$-	0

# UPPER WHANGANUI SCHEME



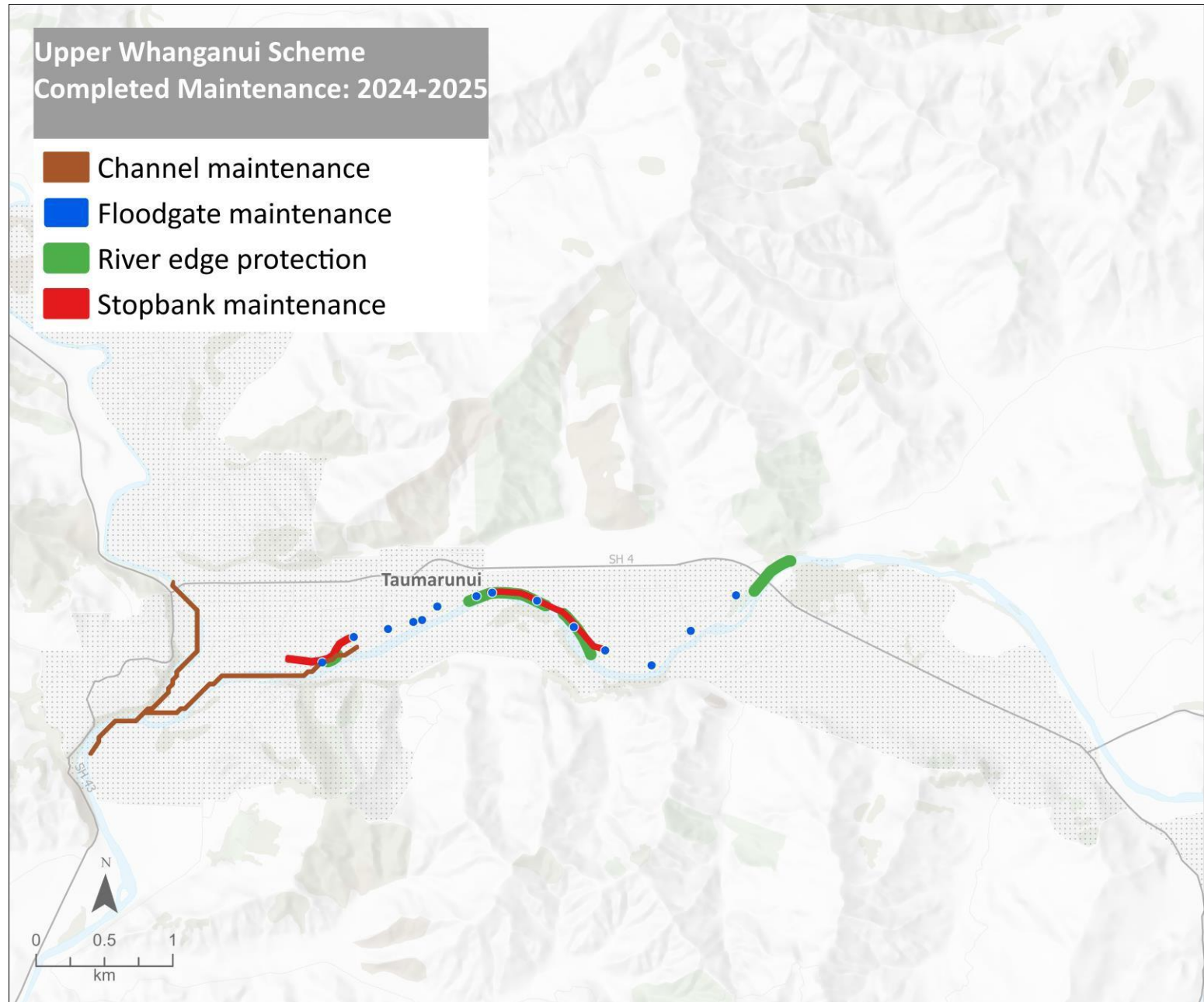
[horizons.govt.nz](https://www.horizons.govt.nz)

# UPPER WHANGANUI SCHEME WORKS 2024-25 (Last year)

Budget expenditure:

- Maintenance approx. 83%; and
- Repairs approx. 0%.

Regional summary	Asset quantity	Works / checks	Percent
Drains (km)	0.7	0	0%
Floodgates (#)	16	154	962%
Stopbanks (km)	3.9	1.5	38%
River Channel (km)		2.4	
River edge protection (km)	3.2	1.7	53%
Dams (#)			
Pump stations (#)			
Weirs (#)			
Amenity (#)			
Flood barrier			



# SCHEME WORKS 2025-26: UPPER WHANGANUI

## Works planned

Floodgate replacements; floodgate inspections; stopbank maintenance; and willow removals.

## Progress

- Horizons & RuDC are discussing maintenance contracts for mowing stopbanks and the impact of grazing on stopbanks on RuDC leased land.
- A local contractor has been engaged for regular inspections of scheme floodgates.
- A floodgate provider has inspected and measured up the various scheme floodgates and is providing pricings to replace the existing gates, most gates likely to be replaced within the next two years.
- Several willows which are growing on beaches within the river channel are to be removed and staff are working with a local contractor.

## Other matters

- Engineering advice about the Old Ruapehu landfill Taumarunui.
- Staff and RuDC staff are to meet to discuss options to repair recent damage adjacent to the old landfill.

## Resource consents being worked on:

- Pungapunga Stream – historical works that need to be retrospectively consented.
- Establishment of regulatory requirements for the tasks identified above.



# Taumarunui – Matapuna

## Issue – stormwater flooding around houses

- Stormwater and flooding issues in Taumarunui were the major issue discussed by RDC Councillors with Horizons Councillors at a meeting in March 2025.
- Issues relate to two flow points where stormwater drains receive water from an upstream rural catchment and transport water through town to the river where they discharge at scheme floodgates.



Photos of the channel near 160 Taupō Road

Map to show

# Taumarunui: Indicative Flood Depths.1:50y

## Key

● Culvert - NZTA

● Culvert - HRC

## River Management Asset (Polyline)

— Vegetation Management

— Bank Protection

— Flood Protection

## Indicative Flood Water Depths (m)

□ <0.05 (not shown)

□ 0.05 - 0.2

□ 0.2 - 0.5

□ 0.5 - 1.0

□ 1.0 - 1.5

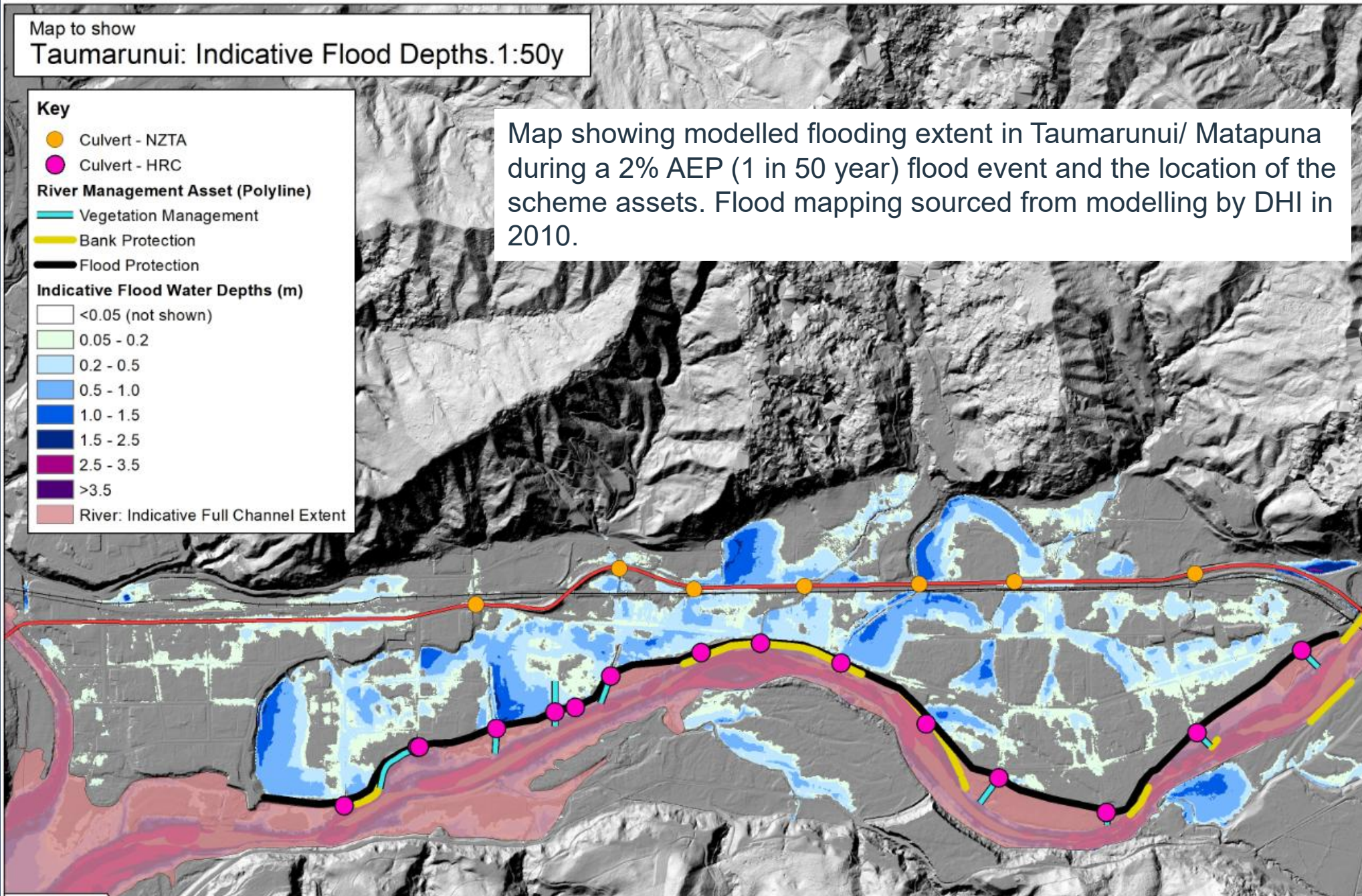
□ 1.5 - 2.5

□ 2.5 - 3.5

□ >3.5

□ River: Indicative Full Channel Extent

Map showing modelled flooding extent in Taumarunui/ Matapuna during a 2% AEP (1 in 50 year) flood event and the location of the scheme assets. Flood mapping sourced from modelling by DHI in 2010.



Map to show  
Taumarunui: Indicative Flood Depths. 1:200y

**Key**

- Culvert - NZTA
- Culvert - HRC

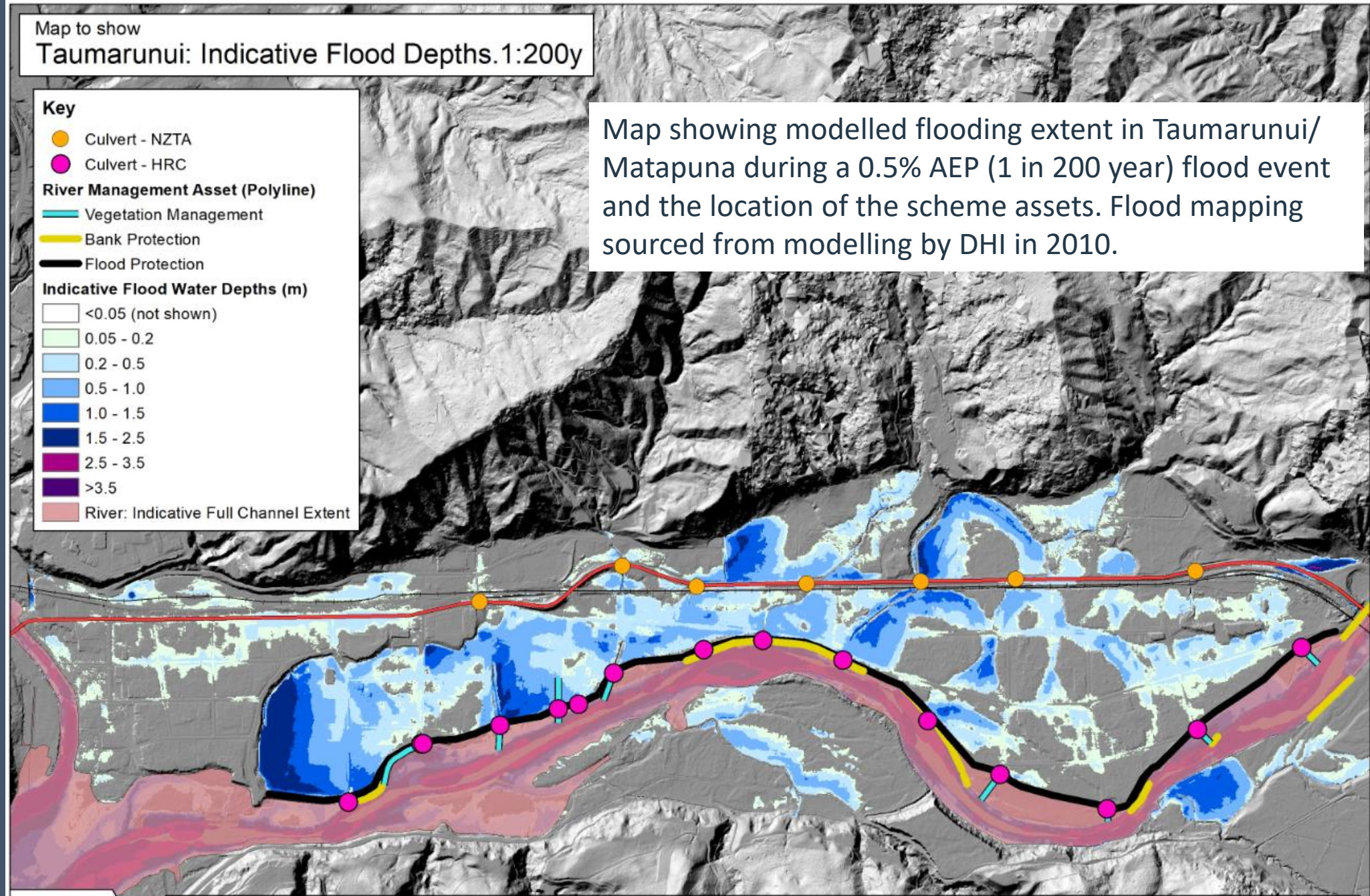
**River Management Asset (Polyline)**

- Vegetation Management
- Bank Protection
- Flood Protection

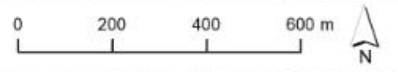
**Indicative Flood Water Depths (m)**

- <0.05 (not shown)
- 0.05 - 0.2
- 0.2 - 0.5
- 0.5 - 1.0
- 1.0 - 1.5
- 1.5 - 2.5
- 2.5 - 3.5
- >3.5
- River: Indicative Full Channel Extent

Map showing modelled flooding extent in Taumarunui/ Matapuna during a 0.5% AEP (1 in 200 year) flood event and the location of the scheme assets. Flood mapping sourced from modelling by DHI in 2010.



Model output location: \\gisdata\gis\Core\Hazard\Flood\FloodModelling\FloodModels\Catchments\Whanganui\Taumarunui\Raster\Taumarunui\_200y\_depth.tif  
Report location: \\gisdata\GIS\Department\Catchment Information\Projects\Hydrology\2025\20250821\_Taumarunui\_flood\_output\50211-Taumarunui\_Flood\_Mapping-01.pdf  
\\gisdata\GIS\Department\Catchment Information\Projects\Hydrology\2025\20250821\_Taumarunui\_flood\_output\20250821\_Tauma\_flood.mxd Contains Crown Copyright Data.



# Actions approved by Council – Taumarunui near 160 Taupo Road

## Action

1. Scoping and implement works to reduce the flooding and stormwater around 160 Taupo Road & Tuku St. Drain.

## Progress

1. Horizons and RuDC staff have produced a report on the nuisance flooding in this area.
2. This identified:
  - loss in channel capacity (due to siltation, debris build-up and vegetation).
  - undersized infrastructure (owned by RuDC and private landowners).
  - loss of channel gradient and drain enlargement upstream.
3. A program of works including channel maintenance and reviewing options to throttle the upstream culverts are being worked through with RuDC and landowners. Consents and landowner permission required.
4. Channel maintenance and vegetation clearance works are being programmed for March/April.

# Stormwater/flooding in Taumarunui/Matapuna

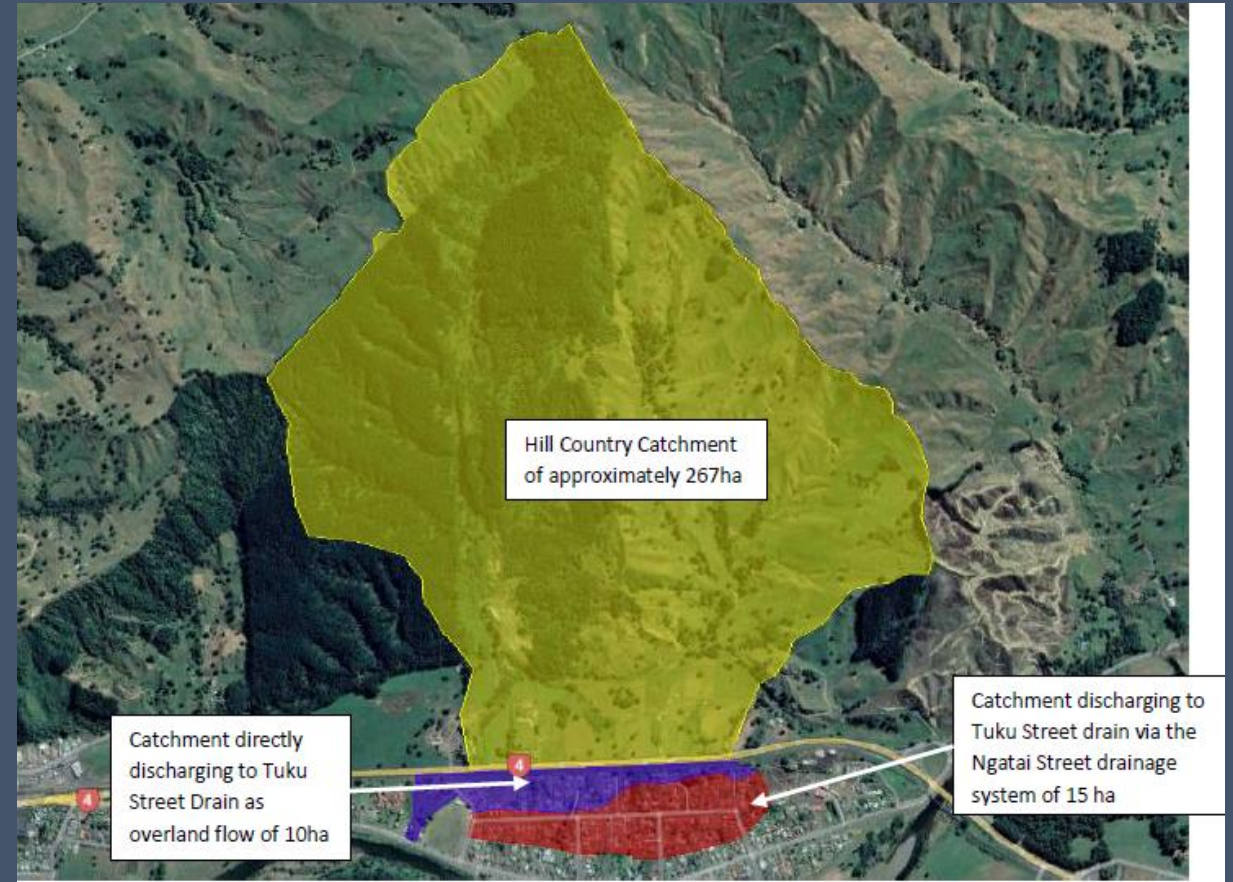


Above: image of Taumarunui/Matapuna showing the location near 160 Taupō Road in the context of Tōtara Crescent. Right image of the area near 160 Taupō Road showing the water course location.



horizons.govt.nz

# TŌTARA CRESENT



Left: RDC supplied drone image taken on 2 June 2022 at the location of Tōtara Crescent.  
Right: Overview of the catchment. Both sourced from Project Lab NZ, 2022.

# Actions approved by Council - Tōtara Crescent

Investigate and enable works to reduce the flooding and stormwater issues in Taumarunui around Tuku Street Drain/Tōtara Crescent.

## Action

1. Investigate the issue around backflow up the drain.
2. Enabling and completing additional maintenance of the Tuku Street Drain.
3. Further investigation of the option to throttle the culverts upstream of the location.
4. Investigation of the capacity in the Tuku Street Drain including culverts and the outlet to the Whanganui.
5. Investigate the options to provide additional stormwater infrastructure to remove water from these areas during rainfall events.

## Progress

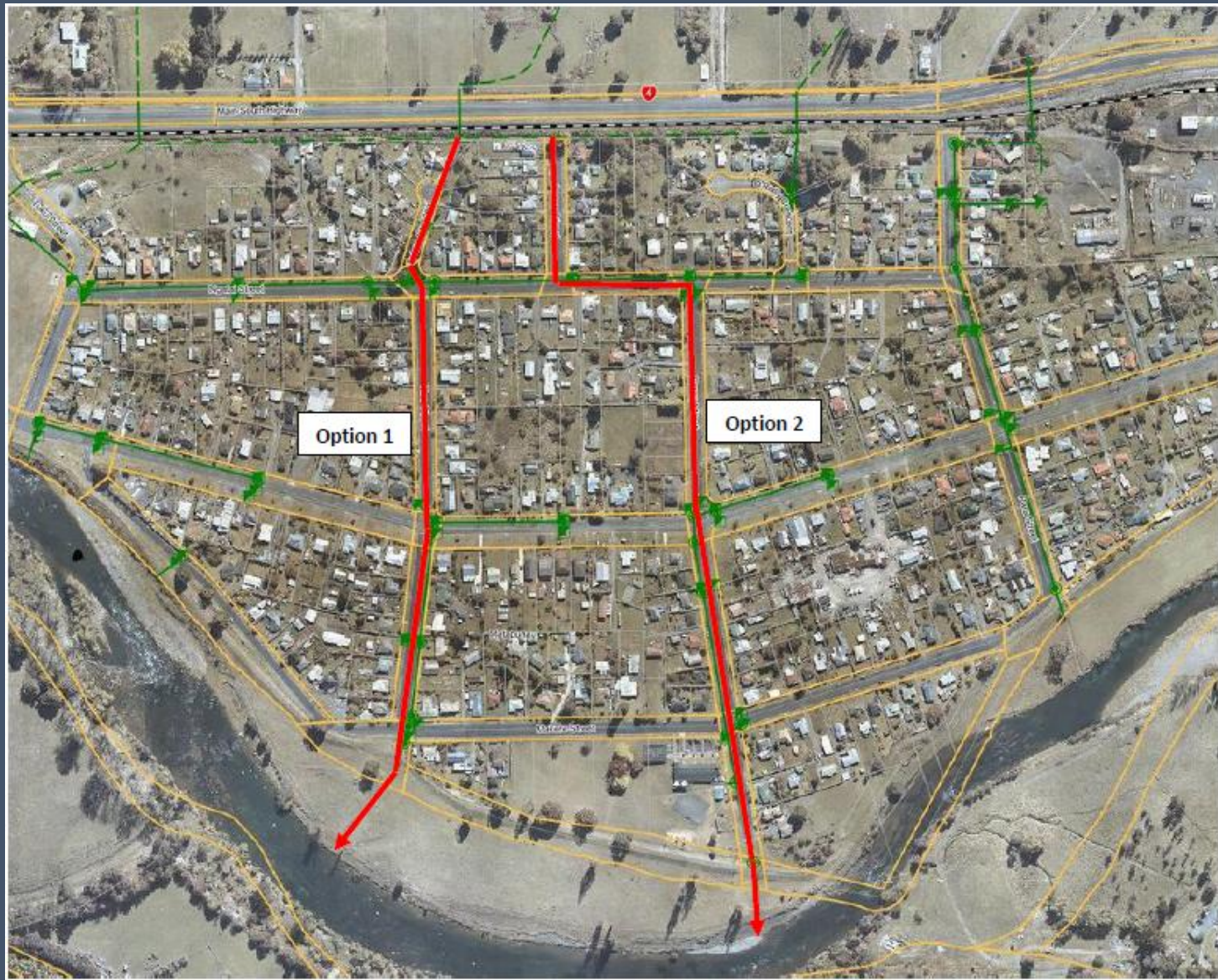
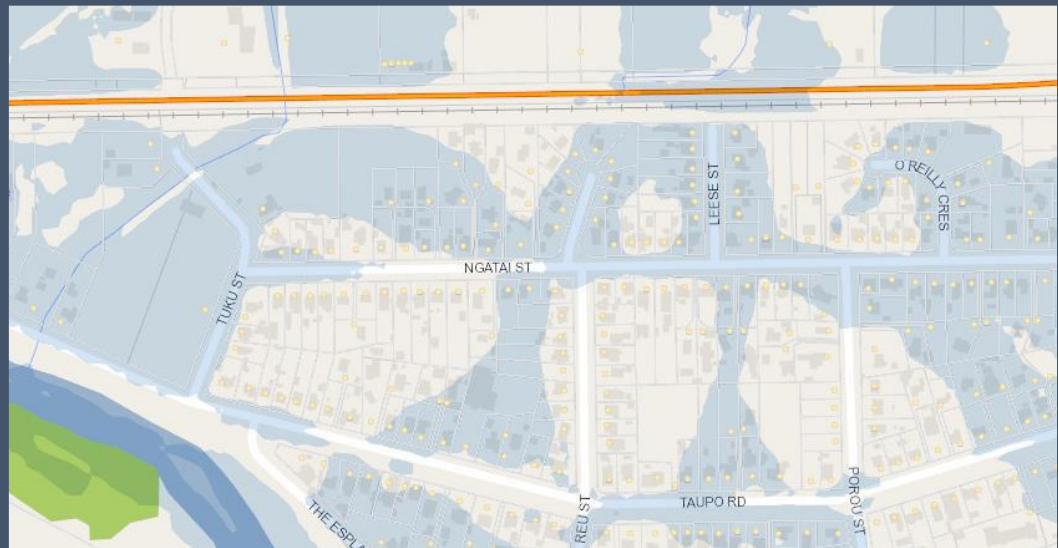
- Horizons staff are working with the author of the previous report on issues in this location to review the options and update costings. If the author is unable to do this an alternate engineering advisor will be engaged.
- Commissioned work on the consents required for the culvert throttling.

# TUKU STREET DRAIN



Left: Photo showing Tuku Street Drain flowing upstream to the low point adjacent to 14 Leese Street where the stormwater exits the Tuku Street Drain and flows overland into Tōtara Crescent.

Right: Photo at the same location (culvert crossing 2) showing the culvert discharge in the foreground and flooding within 7 and 8 Tōtara Crescent in the background. Note the Tuku Street drain has not broken its banks the flooding is from the flow upstream as shown in the left photo. Both Sourced from the Project Lab NZ 2022 report.



Above left: Site location, approximate location and extent of the Tuku Street drain and other local features.  
Below left: Horizons flood hazard map at site location.  
Right: Options for longer term solutions – alternative stormwater mains and new Whanganui River discharge locations.

	2025-26	2026-27	Movement	
<b>Expenditure Schemes</b>				
Maintenance	\$32,672	\$32,672	0.0%	
Repairs	\$30,765	\$31,271	1.6%	
Internal Cost (Staff, vehicle, etc)	\$91,563	\$104,802	14.5%	
Insurance	\$26,365	\$21,779	-17.4%	
Reserve Contributions	\$-		0.0%	
External Cost (rates etc)	\$1,532	\$1,532	0.0%	
Loan Funding	\$1,933	\$-	-100.0%	
Depreciation Funded	\$-	\$-		
<b>Sub total - Operational expenditure</b>	<b>\$184,830</b>	<b>\$192,056</b>	<b>3.9%</b>	
Capex	\$-	\$-	0.0%	
<b>Total Expenditure Schemes</b>	<b>\$184,830</b>	<b>\$192,056</b>	<b>3.9%</b>	
<b>Funding</b>				
Scheme Rates	\$124,798	\$125,352	0.4%	
General Rates	\$32,910	\$33,105	0.6%	
<b>Total Rates</b>	<b>\$157,708</b>	<b>\$158,457</b>	<b>0.5%</b>	
Capital Grant Funding	\$-	\$-	0.0%	
Loan Drawdowns	\$-	\$-	0.0%	
Reserve Drawdowns (Targeted + General)	\$18,750	\$25,000	33.3%	
Other (Leases and Rental)	\$8,372	\$8,599	2.7%	
<b>Total Revenue</b>	<b>\$184,830</b>	<b>\$192,056</b>	<b>3.9%</b>	
<b>Reserves</b>	<b>Closing Balance 30-6-25</b>	<b>Closing Balance 30-6-26</b>	<b>Closing Balance 30-6-27</b>	
Estimated EM Reserve Target		293%	\$124,000	
Estimated EM Reserve Balance (Targeted Only)	\$ 369,249	\$ 369,204	\$363,233	
Difference			\$ 239,233	
Renewal Reserve Balance	\$ -	\$ -	\$ -	
<b>Loans</b>	<b>Closing Balance 30-6-25</b>	<b>Closing Balance 30-6-26</b>	<b>Closing Balance 30-6-27</b>	<b>Remaining Loan Period 30-6-27</b>
Loan Balances	\$1,854	\$-	\$-	0

## Upper Whanganui



### Rates

Up 0.5%.

### Drivers

No loan payment.

No reserves contribution.

### Reserves

293% of target.

### Of note

Work programme with approval to draw reserves. Could increase staff time contribution to this scheme to reflect additional work.



# horizons

REGIONAL COUNCIL



For more information visit [www.horizons.govt.nz](http://www.horizons.govt.nz)  
or freephone Horizons on **0508 800 800**