



## TE PŪWAHA – A COMMUNITY LED PROJECT ALIGNED TO THE HEALTH AND WELLBEING OF TE AWA TUPUA.

Te Pūwaha stands as a description for the entire Whanganui Port revitalisation project. The project is being conducted in line with Tupua te Kawa, the innate value set of Te Awa Tupua, under the guidance and leadership of its hapū toward a whole of community approach.

Te Pūwaha is a collaborative effort involving hapū, the community, Whanganui District Council, Horizons Regional Council, Q-West Boat Builders, and the Port Employment Precinct (WDETT).

Upon completion of Te Pūwaha, Whanganui will have enhanced flood protection and a modern purpose built marine precinct, securing the Whanganui Port as a community asset for the next 50 years, and beyond.

### HOW WE WORK

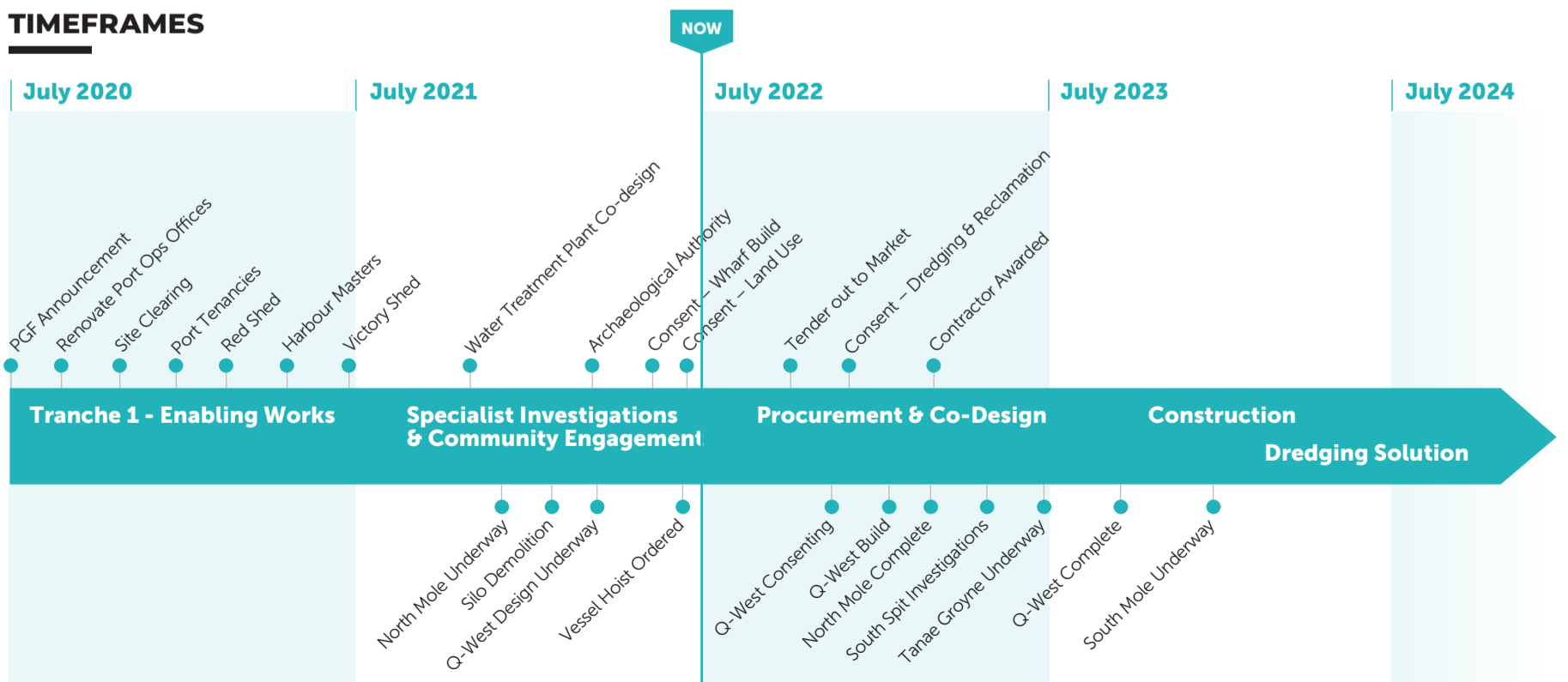
Under the legally defined status of Te Awa Tupua, a set of innate values called Tupua Te Kawa, now guides all decision making in respect of the Whanganui River. Indivisibility is a key component of Tupua te Kawa and this focus is committed to inclusivity and engagement with the whole community.

### HOW IT IS FUNDED

The total investment in Te Pūwaha is over \$50 million, with \$26.75 million received through the Provincial Growth Fund which is managed by Kānoa – Regional Economic Development and Investment Unit. The remaining cost and resources are covered by Whanganui District Council (WDC), Horizons Regional Council, Q-West Boat Builders, and the Whanganui District Employment Training Trust.

Sub-Project	Training Structures	Port Infrastructure	Boat Building Business	Port Employment Precinct
Funded Parties	Horizons	WDC	Q-West	WDETT / PEP
Total Funding	\$16.4M	\$24.8M	\$11.0M	\$1.5M
PGF Funding	\$7.5M	\$12.5M	\$5.25M	\$1.5M
Deliverables	North Mole, South Mole, South Spit	Wharf 1, 2 & 3, Dredging	Boat Building Shed, Boat Hoist	Increased Employment
Investment Type	Grant	Equity	Loan	Grant

### TIMEFRAMES





## WHAT WE DO

### Te Mata Pūau

Te Mata Pūau, representing Whanganui hapū, are leading Te Pūwaha and in partnership with project partners are applying the innate values of Te Awa Tupua. Known as Tupua te Kawa, these values ensure hapū and community are actively engaged as the project is delivered, to ensure the health and wellbeing of the awa and its communities. It is under this proviso that the technical matter of resources consents have been secured.

### Whanganui District Council

The historic wharves that comprise Whanganui Port are neglected and urgently need restoration. Without this work, the existing port operations would be limited to Wharf 1 as is currently the case.

The Whanganui District Council Infrastructure Project includes:

- Upgrading 450m of wharves.
- Development of marine infrastructure.
- Provision of a hardstand and runway suitable for a mobile boat hoist with a 380-tonne lift capacity to enable boats to be lifted in and out of the water.
- Improving dredging capabilities to secure the long term safe use of the wharves and Public slipway.

In 2021 the project advised the council of a potential coming shortfall in funding for the council's portion of the project work. Factors contributing to this include ongoing impacts, delays and cost escalation largely driven by global price fluctuations. The project continues to monitor this risk but will not be able to quantify costs until after the tender for work to build the port has gone to market and all necessary value engineering has been completed.

### Whanganui District Council Whanganui Port Limited Partnership

A further milestone in the work to revitalise the port, is the establishment of a clear organisational structure for future port operations. This includes the creation of a 'special purpose vehicle' or SPV – called the Port Operations Company, which is funded by the Harbour Endowment Fund. An SPV is a legal entity, set up in local government projects where there are several partners across different sectors, to keep matters related to funding and finances clear. It is anticipated that, from later in 2022, port operations and the continued delivery of the Te Pūwaha project portion of work will be managed through a newly created Council Controlled Organisation, the Whanganui Port Limited Partnership.

### Horizons Regional Council

The Horizons portion of the project will ensure river channel alignment is maintained to protect the town's critical infrastructure (including the port, three waters and flood protection assets) from erosion and sea encroachment. The certainty of river alignment is a critical component to the wider Te Pūwaha project. This work will protect and enable the Whanganui Port to develop and operate by defining the river mouth and ensuring a navigable depth is maintained for vessels.

- **Stage 1:** The North Mole and revetment is approximately 55% complete with construction scheduled to be complete early 2023. North Mole project costs total \$8.6M including the construction, rock supply, consenting, design, communications and project management. Included in Stage 1 is the construction of two new fishing platforms. The two platforms, at a cost of \$902,000 will be fit for purpose, span a length of 25 metres each and provide greater access to the awa. The cost is budgeted within the funded works for the North Mole.

- **Stage 2A:** A consent application is being prepared for the reinstatement of the Tanae Groyne and construction is anticipated to commence in 2023, at a projected cost of \$1M (rock supply and placement).
- **Stage 2B:** Design and consenting for the South Mole upgrade are underway, with community engagement ongoing and an aim for construction to commence in late 2023. Initial investigations have indicated costs for this portion of the project range from \$3.6M to \$27.75, depending on levels of service.
- **Stage 3:** The original Stage 3 works to upgrade the current erosion control structures along the South Spit and to replenish the South Spit embayment have been deferred due to cost increases, however will still be completed under a different funding stream in the future. This work is important, yet less critical, in maintaining river channel alignment and upgrade measures will be developed under Te Pūwaha.

### Q-West Boat Builders

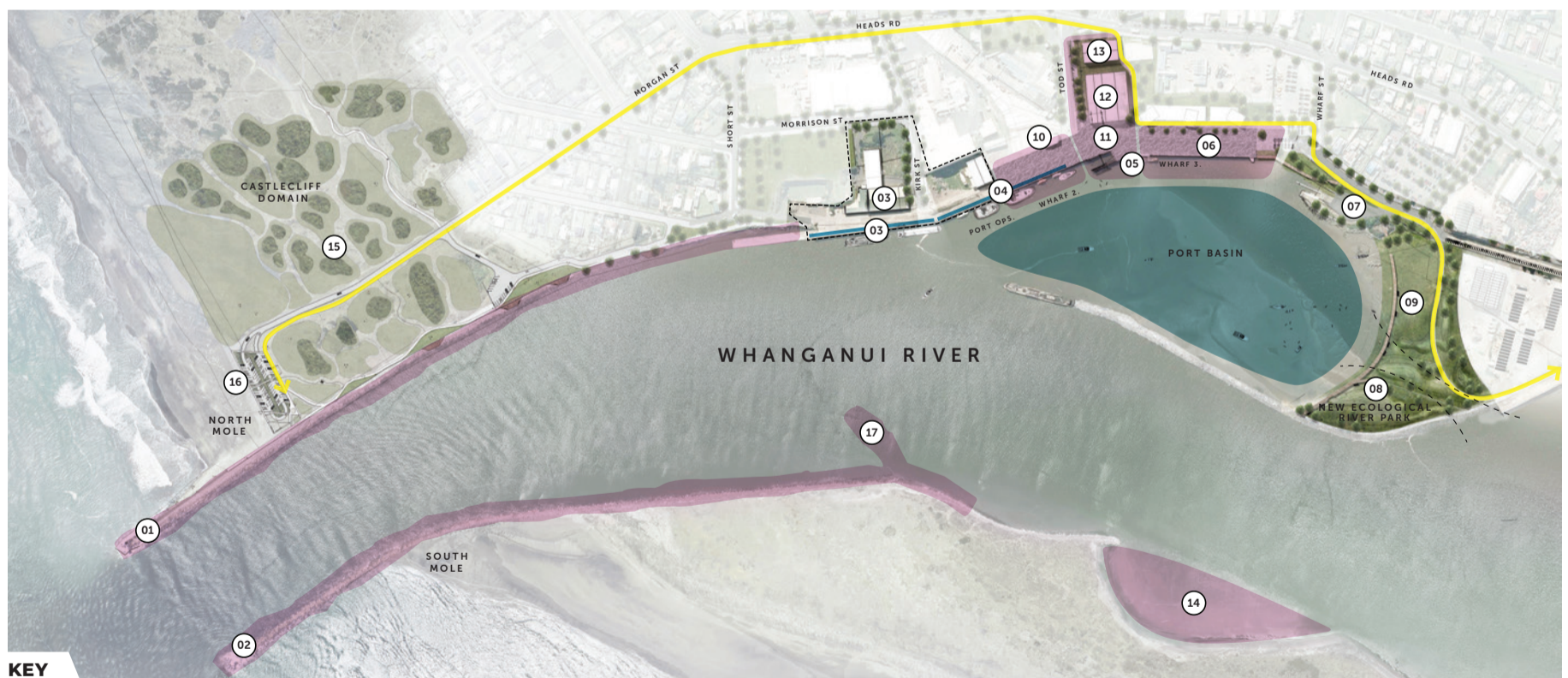
A revamp for Q-West Boat Builders will establish a purpose-built facility and mobile boat hoist with a 380-tonne lift capacity for new builds, repairs, and maintenance services within the Port, while employing 30 staff and creating an estimated 80 additional jobs with neighbouring businesses.

### Port Employment Precinct

Te Ara Mahi funding managed by Kānoa – Regional Economic Development and Investment Unit has enabled Whanganui District Employment Training Trust to establish a Port Employment Precinct to facilitate training development and job opportunities associated with the port revitalisation project. The Port Employment Precinct Whanganui connects our community with training and jobs at the port and supports businesses looking to train or find skilled staff.

## TE PŪWAHA PROJECT PLAN

As of August 2022. Subject to change.



### KEY

- |  |   |   |   |
|--|---|---|---|
| 01 North Mole  | 06 Wharf 3: Marine businesses                             | 11 Boat launch infrastructure: hard-stand and travel lift bay | 16 Proposed carpark and amenities upgrade |
| 02 South Mole  | 07 Boat ramp upgrade                                      | 12 Q-West Boat Building sheds                                 | 17 Tanae Groyne                           |
| 03 Wharf 1: Port operations and freight                  | 08 Proposed reclamation constructed from port silt dredge | 13 Q-West Boat Building front of house                        | Proposed Cycleway                         |
| 04 Wharf 2: Dredging barge and mid-sized vessel berthage | 09 Flexible open space                                    | 14 South Spit Embayment                                       | Key funded works                          |
| 05 Wharf 2: Transition elbow to Wharf 3                  | 10 Site Office & Te Mata Pūau                             | 15 Proposed dune restoration                                  |   |

## JOIN THE CONVERSATION