



TE PŪWAHA

Te Pūwaha refers to the gateway, or river mouth. It is also the name of the Whanganui Port revitalisation project. It will be the first true community led exercise for management of a project under the new legal status of the Whanganui River as Te Awa Tupua.

Te Pūwaha is a collaborative effort involving Whanganui Iwi, community members, and four other groups invested in the project: Whanganui District Council, Horizons Regional Council, Q-West Boat Builders and the Whanganui District Employment Training Trust. The purpose of the project is to secure the Whanganui port as a long-term community economic and recreational asset. Upon completion Whanganui will have a modern marine precinct.

Te Pūwaha provides a unique opportunity to ensure the design of the project is completed in accordance with Tupua te Kawa, the innate values of Te Awa Tupua enshrined in law. There are greater opportunities for community engagement over the proposed work than ever before under a Te Awa Tupua model.

HOW THIS IS FUNDED

The total investment in Te Pūwaha is over \$50 million. This investment includes \$26.75 million from central government's Provincial Growth Fund (PGF), with the remaining cost and resources covered by the project partners.

WHAT THIS WILL LOOK LIKE

Te Mata Pūau is the face of local hapū, leading community engagement alongside Te Pūwaha. Ngā Tāngata Tiaki and the Whanganui Land Settlement Trust are leading the project partners to a greater understanding of their obligations to Te Awa Tupua.

Whanganui District Council will upgrade wharves, develop marine infrastructure and improve dredging capabilities. This will enhance the local boat building and marine industry.

Horizons Regional Council will repair moles and other river training structures that control the alignment of the lower Whanganui River. This will protect nearby developments and critical city infrastructure from flooding, and provide marine access from the sea to the port.

A revamp for Q-West boat builders will establish a purpose-built facility and 300 tonne vessel hoist for new builds, repairs, and maintenance services within the Port, while employing 30 staff and creating an estimated 80 additional jobs with neighbouring businesses.

The port employment precinct will connect local people with jobs created by the port redevelopment and facilitate on-the-job and classroom-based training.

The project will improve the aesthetic appearance of the area, making it attractive to current and new users. It will create a platform for attracting further investment and new businesses into the Port, stimulating ongoing local economic development.

It will provide specialist training, retraining and upskilling for all port activities and users through the port employment precinct programme.

Te Pūwaha will create environmentally responsible vessel servicing and maintenance operations. The port's heritage and authenticity will be valued. Wherever possible, materials from structures within the port precinct will repurposed or restored.

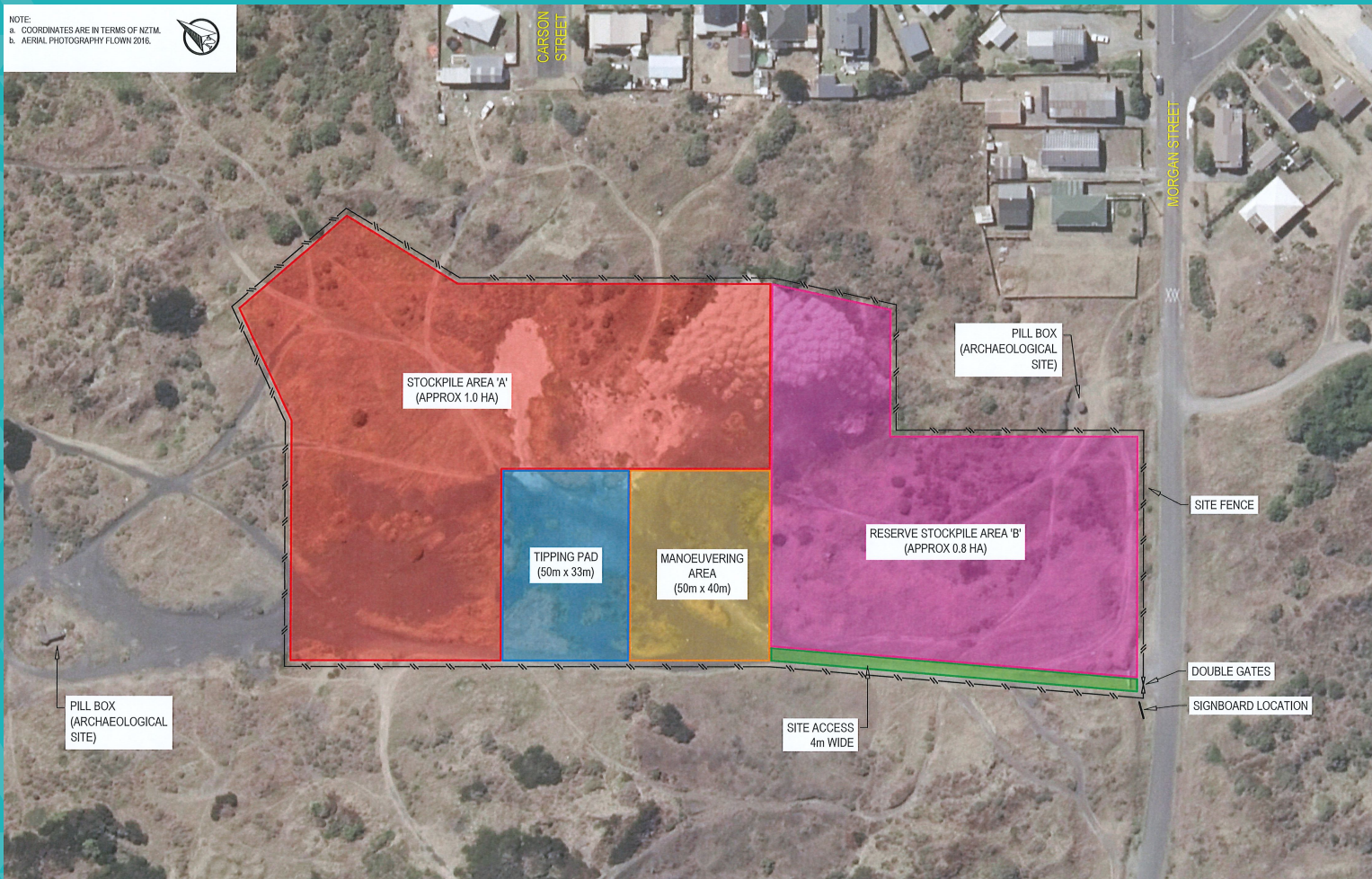
REPAIRS AND RECONSTRUCTION OF THE NORTH MOLE

The work to strengthen and repair the deteriorated North and South moles is essential to an operational port, as the moles are needed to define the river mouth and ensure a navigable depth is maintained for vessels.

The North Mole upgrade will begin with construction of a rock stockpile site on the flat dune at the end of Morgan Street.

THE STOCKPILE SITE

This site on Morgan Street will be home to approximately 5,000 tonne of rocks to be used as a buffer supply, in case there are any delays to transporting rocks to the mole itself. A further 5,000 tonnes may be stored at the site if the rate of supply exceeds the rate of placement of rocks on the North Mole. It is expected the stockpile site will cover an area of approximately 24,000m² or 2.4ha.



SITE MANAGEMENT

Planning for the rock stockpile site has been completed, and initial ecological and archaeological assessments have been carried out.

The hardstand site will be in use for two years and will be fenced off to exclude the public.

A water cart will be used to control dust at the site.

Traffic management will be in place, and the timing of work on-site will be restricted to 8.00am – 5.00pm, Monday to Friday.

WHAT HAPPENS NEXT

The Te Pūwaha Governance Group is committed to ensuring this project is inclusive so we encourage you to put forward your thoughts on how we can create an accessible recreational asset for our community.

A series of hui will be held with the community to discuss the potential recreational uses and benefits of the North Mole upgrade, along with remediation of the rock stockpile site.

To register your interest for these hui and keep up to date with the project visit www.whanganui.govt.nz/port.