

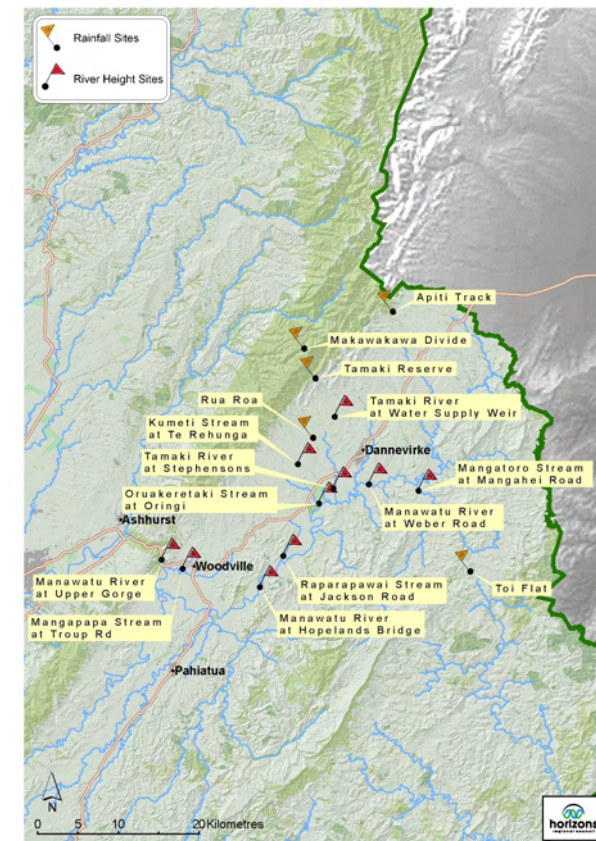


June 2010

Waterline Northern Upper Manawatu Catchment Freephone 0508 4 Flood

Waterline is a 24-hour, freephone service giving river height and rainfall information.

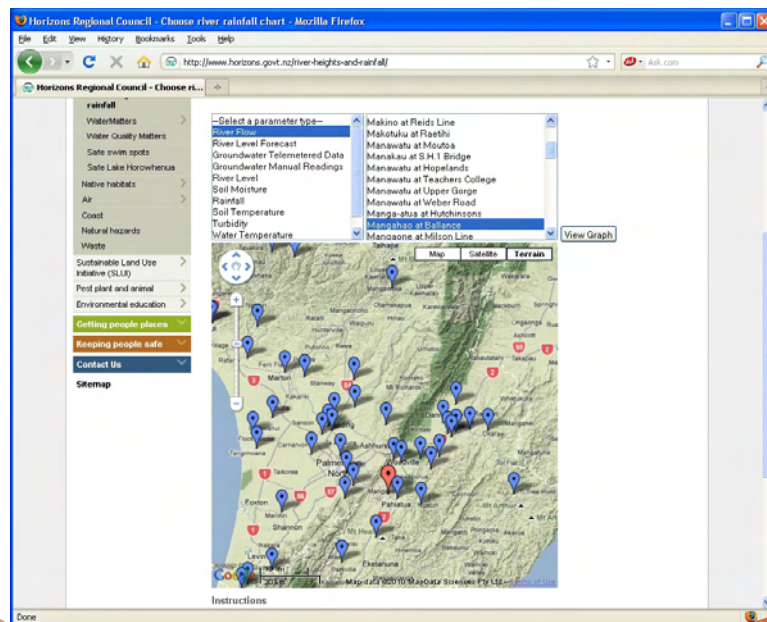
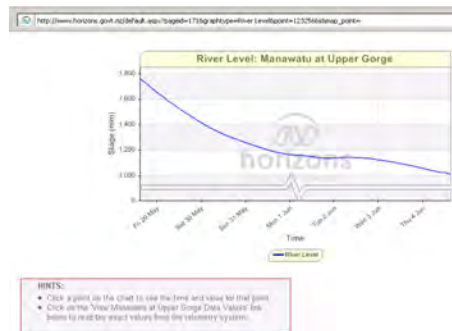
Simply follow the voice prompts to get the information you want to know.



Check out our Website

Check out our website to find out what is happening at the river and rainfall sites in our Region, and about other council services, news and information.

www.horizons.govt.nz



What you do

Phone 0508 435 663. When answered, enter the following numbers, depending on what you want to know:

1. Manawatu Catchment Downstream of Manawatu Gorge

Rainfall Sites

3 = Rainfall Then **04 = Makawakawa Divide**

2. Manawatu Catchment Upstream of Manawatu Gorge

Height Sites

1 = Height Then choose your site number

- 00 = Manawatu River at Upper Gorge
- 01 = Manawatu River at Hopelands
- 02 = Manawatu River at Weber Road
- 10 = Tamaki River at Water Supply Weir
- 11 = Kumeti Stream at Te Rehunga
- 12 = Tamaki River at Stephensons
- 13 = Raparapawai Stream at Jackson Road
- 14 = Oruakeretaki Stream at Oringi
- 15 = Mangatoro Stream at Mangahei Road
- 19 = Mangapapa Stream at Troup Road

Or

3 = Rainfall Then

Rainfall Sites

- 02 = Toi Flat
- 03 = Apiti Track
- 04 = Rua Roa
- 05 = Tamaki Reserve

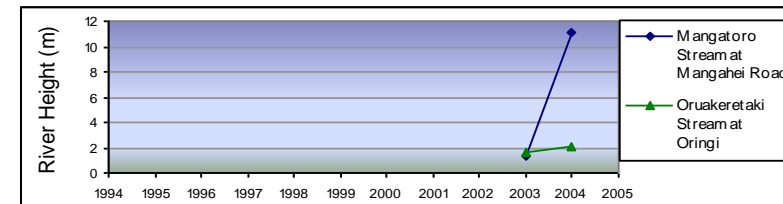
Speed Dial your favourite site

To save time, you can speed dial your favourite site. For example, entering 2100 will give you the river height of the Manawatu River at Upper Gorge.

Please let us know as soon as possible if you think something is wrong with the Waterline System by phoning our 24-hour call free number 0508 446 749.

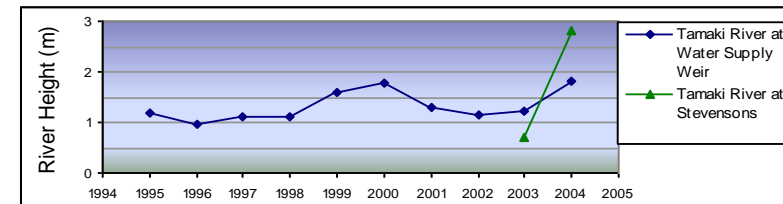
How big is the flood?

The graphs below show the maximum river height reached during the largest floods recorded each year between 1995 and 2004.



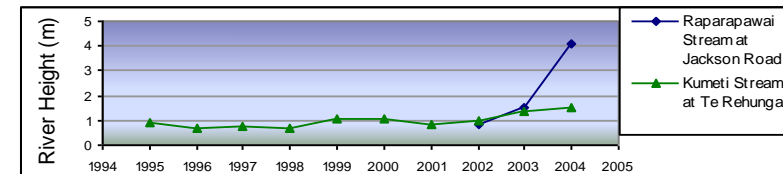
Maximum Recorded Height:

Mangahei Road – 11.07m in 2004
Oringi – 2.13m in 2004



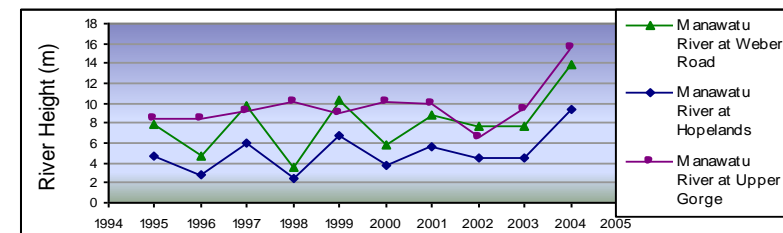
Maximum Recorded Height:

Water Supply Weir – 1.83m in 2004
Stephensons – 1.83m in 2004



Maximum Recorded Height:

Jackson Road – 4.05m in 2004
Te Rehunga – 1.54m in 2004



Maximum Recorded Height:

Weber Road – 13.82m in 2004
Hopelands Bridge – 9.42m in 2004
Upper Gorge – 9.42m in 2004

No records are available for Troup Road for the period 1994-2005

No records are available for Manga-atua Stream for the period 1994-2003
Maximum Recorded Height: 3.9m in 2004

You can estimate the flood's likely impact on your property by combining the river height information you receive with these graphs and your own knowledge of past events. If you are new to the area, we recommend you contact neighbours to find out how different sized floods affect your property.