



Cultivation

Cultivation¹ is a Permitted Activity if erosion and sediment discharges to waterways are minimised.

Purpose of the rules

The One Plan has rules about cultivation. They allow cultivation provided:

- Soil loss into waterways is minimised; and

- Cultivation is not in the coastal foredune or in indigenous biodiversity habitats.

What the rules cover

Cultivation and any ancillary:

- Diversion of water on land; and
- Discharge of sediment into water

Note that direct drilling and no-tillage can be done as of right.

Cultivation [[RP-LF-LAND-R4](#)]

This is a Permitted Activity so long as six standards are met. The standards relate to minimizing soil loss to waterways, avoiding the coastal foredune, avoiding damage to indigenous biodiversity areas and using industry good practice methods.

The pathway to a Permitted Activity is shown in the green boxes in the Cultivation Activity

Pathway Diagram attached. Most cultivation in the Region should fit the Permitted Activity.

If it is not practical to meet the standards, cultivation can still be carried out but a resource consent is needed first. Horizons has a simple, quick, cost-free farm gate process to do that in most cases.

¹ **Cultivation** means preparing land for growing pasture or a crop and the planting, tending and harvesting of that pasture or crop, but excludes direct drilling of seed, no-tillage practices, re-contouring land (separate rule), forestry (separate rule), the clearance of woody vegetation and new tracking in a Hill Country Erosion Management site (separate rule), and the clearance of woody vegetation and new tracking in a Hill Country Erosion Management Site (separate rule).

Hill Country Erosion Management Site means any area of land with a pre-existing slope of 20° or greater on which vegetation clearance, land disturbance, forestry or cultivation and ancillary land disturbance for the purposes of constructing erosion and sediment control methods to minimise run off to water is being or is to be undertaken.



Cultivation that does not comply with RP-LF-LAND-R1 to RP-LF-LAND-R7 [[RP-LF-LAND-R8](#)]

This rule is only triggered if [RP-LF-LAND-R4](#) is not complied with.

Resource consent is needed because in some cases the risk of sediment running off the paddock into water is greater. The pathway for this is shown in the orange boxes in the Cultivation Activity Pathway Diagram attached.

Success factors

The keys to successful implementation of the Rules are:

- Early communication with a Horizons [Consents Planner](#) for the area if you want advice about the Permitted Activity or help to make the consent process for cultivation that does not comply with [RP-LF-LAND-R4](#) simple, quick and cost free;
- Maintaining the 5 m or 10 m separation distances from waterways and wetlands specified in the rules; and
- Assessing the risk of sediment loss and using appropriate good practice methods to minimise it.

Good Management Practice

Horizons is assuming that farmers know and use the best methods for their location, however, there may be some useful alternative methods for minimizing sediment run off to be found in the [Code of Practice for Commercial Vegetable Growing for Horizons Region \(Horticulture New Zealand\)](#) and the [Soil and Water Management Waimarino District – Better Management Practice Guidelines](#).

The four key elements of good practice are described as:

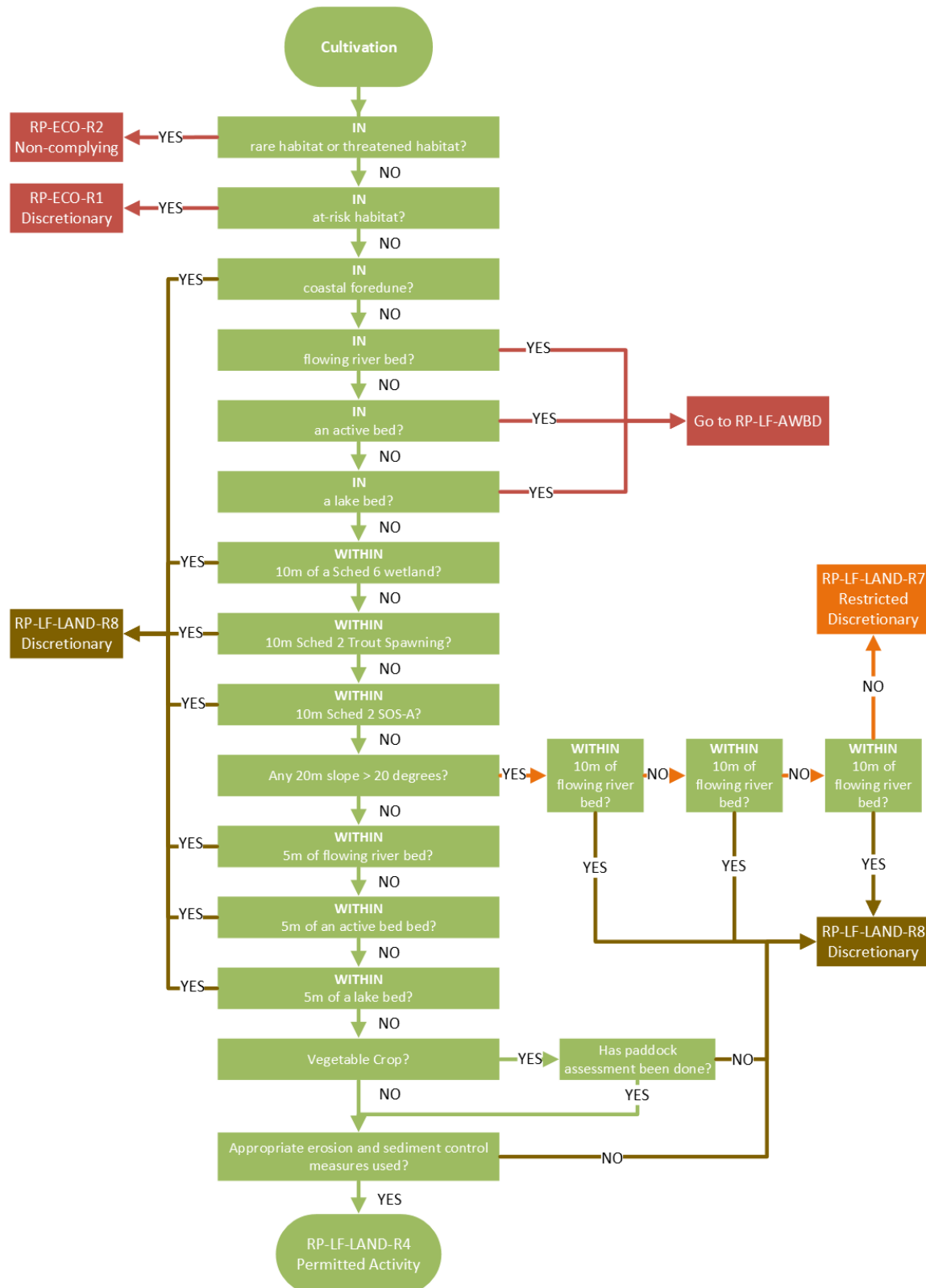
- Assessing your paddock by identifying the risks of soil loss;
- Using appropriate methods to stop or control water from running across the paddock; e.g., interceptor drains, benched headlands, and bunds to keep water out;
- Using appropriate methods to control in-paddock release of soil and water, e.g., grass swales, contour drains, paddock length (especially if sloping), and method of cultivation
- Using appropriate methods to manage soil and water that moves off the paddock, e.g., vegetated buffers, riparian margins, raised access ways, silt traps and bunds to temporarily keep water in the paddock.

Need more information?

Further information is available on Horizons' website: www.horizons.govt.nz OR to speak with someone about Cultivation Activities please contact us on freephone 0508 800 800.



Cultivation Activity Diagram





Rules relating to Cultivation in the One Plan

Please note:

- A term or expression marked with the symbol * is defined in the glossary of the Plan.
- A term or expression marked with the symbol ^ is defined in the RMA.

| Rule | Activity | Classification | Conditions/Standards/Terms | Control/Discretion Non-Notification |
|-----------------------------------|--|----------------|---|--|
| LF-LAND-R4 <i>Cultivation*</i> | <p>Except as regulated by RP-LF-LAND-R7, RP-ECO-R1 and RP-ECO-R2, any <i>cultivation*</i> and, as an <i>ancillary activity*</i> <i>land disturbance*</i> for the purposes of constructing erosion and sediment control methods to minimise sediment run-off into <i>water*</i> pursuant to s9(2) RMA:</p> <ol style="list-style-type: none"> 1. diversion of <i>water*</i> pursuant to s14(2) RMA on the <i>land*</i> where the <i>cultivation*</i> is undertaken, or 2. <i>discharge*</i> of sediment into <i>water*</i> pursuant to s15(1) RMA resulting from the <i>cultivation*</i> or, as an <i>ancillary activity*</i> erosion and sediment control methods to minimise sediment | Permitted | <ol style="list-style-type: none"> 1. The activity must not take place on <i>land*</i> that is within a <i>coastal foredune*</i>. 2. Bunding, silt traps, interception drains or other alternative methods to minimise sediment run-off to <i>water*</i> must be installed prior to and maintained during <i>cultivation*</i>. 3. Any <i>discharge*</i> of sediment into <i>water*</i> as an <i>ancillary activity*</i> must not, after reasonable mixing, cause the receiving <i>waterbody*</i> to breach the water quality standards for visual clarity set out in RP-SCHED5 for that <i>waterbody*</i>. 4. For vegetable crops listed within the Commodity Levies (Vegetables and Fruit) Order 2007 a paddock assessment must be undertaken in accordance with the Code of Practice for Commercial Vegetable Growing in the Horizons Region (Horticulture New Zealand) Version 2010/2. 5. The activity must not occur on <i>land*</i> that is in, or within 5m of: <ol style="list-style-type: none"> a. the <i>bed*</i> of a <i>river*</i> that is permanently flowing, b. the <i>bed*</i> of a <i>river*</i> that is not permanently flowing and has an <i>active bed*</i> width greater than 1m, c. the <i>bed*</i> of a <i>lake*</i>. | |



| | | | | |
|---|--|--------------------------|---|--|
| | run-off into <i>water</i> *. | | <p>6. The activity must not occur on <i>land</i>* that is in, or within 10m of:</p> <ul style="list-style-type: none"> a. A wetland as identified in RP-SCHED6, b. Sites valued for Trout Spawning as identified in RP-SCHED2, c. Sites of Significance – Aquatic as identified in RP-SCHED2. <p>Advice note:</p> <p>Examples of alternative methods for minimizing sediment run-off can be found in the Code of Practice for Commercial Vegetable Growing in the Horizons Region (Horticulture New Zealand).</p> | |
| LF-LAND-R7 Specified <i>vegetation clearance</i> *, <i>land disturbance</i> * or <i>cultivation</i> * in a <i>Hill Country Erosion Management Site</i> * | <p>Pursuant to s9(2) RMA, except as regulated by RP-ECO-R1 and RP-ECO-R2, any:</p> <ul style="list-style-type: none"> 1. <i>land disturbance</i>* of more than 100m² per 12-month period, or 2. <i>vegetation clearance</i>* of 1 ha or greater per <i>property</i>* per 12-month period where the age of the vegetation in the area to be cleared is greater than seven years, or 3. <i>cultivation</i>*, undertaken within a <i>Hill</i> | Restricted Discretionary | <ul style="list-style-type: none"> 1. The activity must not take place on <i>land</i>* that is within a <i>coastal foredune</i>*. 2. The activity must not occur on <i>land</i>* that is in, or within 10 m of: <ul style="list-style-type: none"> a. the <i>bed</i>* of a <i>river</i>* that is permanently flowing b. the <i>bed</i>* of a <i>river</i>* that is not permanently flowing and has an <i>active bed</i>* width greater than 1 m c. the <i>bed</i>* of a <i>lake</i>*, d. a <i>wetland</i>[^] as identified in RP-SCHED6, e. sites valued for Trout Spawning as identified in RP-SCHED2, <p>Sites of Significance – Aquatic as identified in RP-SCHED2.</p> | <p>Discretion is restricted to:</p> <ul style="list-style-type: none"> 1. the location, nature, scale, timing and duration of the activity, 2. <i>effects</i>* of the activity and associated sediment run-off on soil conservation, surface <i>water</i>* quality and aquatic ecology and the methods to be taken to avoid, remedy or mitigate them, 3. the requirement to provide an <i>Erosion and Sediment Control Plan</i>*, the content of and standard to which the plan must be prepared, the implementation of the plan, and |



| | | | | |
|--|---|--|--|---|
| | <p><i>Country Erosion Management Site*</i> and any ancillary:</p> <p>diversion of <i>water*</i> pursuant to s14(2) RMA on the <i>land*</i> where <i>vegetation clearance*</i>, <i>land disturbance*</i> or <i>cultivation*</i>.</p> | | | <p>the timing of when it must be prepared and submitted,</p> <ol style="list-style-type: none"> 4. the provision of greater setback distances from <i>waterbodies*</i> than those specified under condition (2) to provide greater protection to a <i>waterbody*</i> if required, 5. the extent of non-compliance with the <i>water quality target*</i> for visual clarity set out in RP-SCHED5, 6. duration of consent, 7. review of consent <i>conditions</i>, 8. compliance monitoring, 9. the matters in RP-LF-LW-P12. <p><i>Resource consent</i>[^] applications under this <i>rule</i>[^] will not be notified and written approval of affected persons will not be required (notice of applications need not be <i>served</i>[^] on affected persons).</p> <p>Advice Note:</p> <p>Examples of alternative methods to avoid, remedy or mitigate sediment can be found in:</p> <ol style="list-style-type: none"> 1. Chapters 12-24 of the Erosion and Sediment Control |
|--|---|--|--|---|



| | | | | |
|--|---|---------------|--|---|
| | | | | <p>Guidelines for the Wellington Region (September 2002), and</p> <p>The Code of Practice for Commercial Vegetable Growing in the Horizons Region (Horticulture New Zealand).</p> |
| <p>LF-LAND-R8 Vegetation clearance*, land disturbance*, cultivation* or forestry* that does not comply with RP-LF-LAND-R1 to RP-LF-LAND-R7</p> | <p>Except as regulated by RP-ECO-R1 and RP-ECO-R2, any vegetation clearance*, land disturbance*, cultivation* or forestry* pursuant to s9(2) RMA that does not meet the conditions[^], standards or terms of RP-LF-LAND-R1, RP-LF-LAND-R2, RP-LF-LAND-R3, RP-LF-LAND-R4, RP-LF-LAND-R5, RPLF-LAND-R6 or RP-LF-LAND-R7 and as an ancillary activity*, any:</p> <ol style="list-style-type: none"> 1. disturbance of the bed* of a river* or lake* by forestry* authorized by those rules[^] pursuant to s13(1) RMA 2. diversion of water* authorized by those rules[^] pursuant to s14(2) RMA, or | Discretionary | | |



| | | | | |
|--|--|--|--|--|
| | <i>discharge*</i> of sediment or <i>slash*</i> authorized by those <i>rules</i> [^] pursuant to s15(1) RMA. | | | |
|--|--|--|--|--|