



# Vegetation clearance

Vegetation clearance is a Permitted Activity under the One Plan if the vegetation is seven years old or less and biodiversity habitats and rivers and their margins are avoided.

## Purpose of the rules

The One Plan has rules about vegetation clearance. They allow for vegetation clearance provided:

- Vegetation clearance is not in the coastal foredune or in indigenous biodiversity habitats;
- Buffer zones are provided along rivers, beside lakes and beside biodiversity habitats; and
- Soil loss into waterways is minimised.

## What the rules include

The removal or destruction of vegetation by any means; and

- Diversion of water on land; and
- Discharge of sediment into water.

## What the rules exclude

- Land disturbance, cultivation, and forestry which are managed under separate rules.
- Vegetation clearance in rare habitats, threatened habitats, or at-risk habitats which are managed under separate rules.

## Things that can be done as of right

- Grazing animals;
- Establishing a fence line (not in a rare habitat, threatened habitat or at-risk habitat);
- Maintenance or upgrade of existing tracks, structures (including fences), or infrastructure;
- Shelterbelt, fruit tree or fruit vine plantation maintenance;
- Actions to protect, maintain or enhance areas of rare habitat, threatened habitat or at-risk habitat
- Clearance of vegetation that is fallen or dead (not in a rare habitat, threatened habitat or at-risk habitat that is forest or scrub in [Schedule 6](#));
- Activities undertaken within the boundaries of land held or managed under the [Conservation Act 1987](#);



- Activities undertaken within the boundaries of the New Zealand Defence Force Waiouru Military Training Area; and
- Clearance of thistles, ring ferns, carpet ferns, rushes, ink weed, briar rose, barberry, introduced pampas grass (other than toetoe), mingimingi, wilding pinus species, Japanese poplar, Japanese walnut, and pest plants referred to in the Regional Council's [Regional Pest Plant Management Strategy](#).
- *Please note that consent may be required under the National Environmental Standards for Freshwater 2020 (NES-F) if the vegetation clearance is within 10 metres of an inland natural wetland, please see Part 3 of the NES-F (2020) for more information.*

## **Vegetation clearance done as a Permitted Activity [RP-LF-LAND-R5]**

Vegetation clearance is a Permitted Activity:

- On land slope less than 20°; or
- On land slope 20° or more and the vegetation is seven years old or less; or
- On land slope 20° or more, the vegetation is more than seven years old and the area to be cleared is less than one hectare;

Provided four standards are met.

The standards relate to avoiding damage to indigenous biodiversity habitats and leaving a vegetated buffer between vegetation clearance and rivers, lakes, and wetlands.

The pathway to a Permitted Activity is shown in the green boxes in the Vegetation Clearance Activity Pathway Diagram attached.

If it is not practical to meet the standards or more than one hectare of vegetation over seven years old will be cleared on slopes steeper than 20°, it can still be carried out but a resource consent is needed first.

## **Vegetation clearance on land slope greater than 20°, vegetation aged more than seven years and clearance of one hectare or more [RP-LF-LAND-R7]**

Resource consent is needed because in some circumstances the risk of damage to biodiversity habitats, riparian margins and risk of erosion is greater. The pathway for this is shown in the orange boxes in the Vegetation Clearance Activity Pathway Diagram attached.

## **Success factors**

The keys to a successful outcome for the farmer are:

- Early communication with a [Consents Planner](#) if you want advice about how to meet the Permitted Activity.
- Maintaining the 5m or 10m separation distances from waterways and wetlands specified in the rules; and
- Assessing the risk of sediment loss and using appropriate good practice methods to minimise it if necessary,

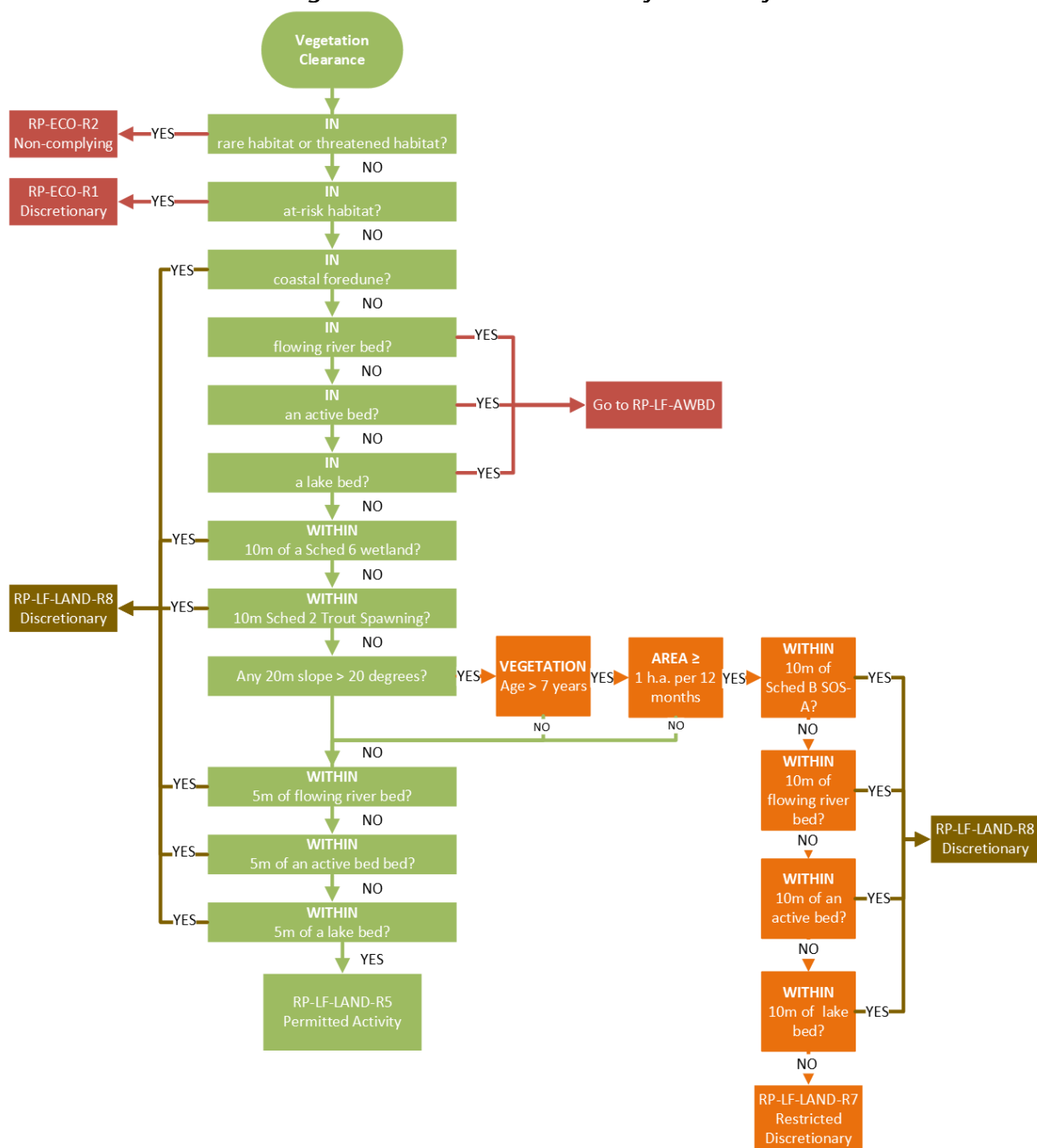




## More information

Further information is available on Horizons' website [www.horizons.govt.nz](http://www.horizons.govt.nz) or to speak with someone about vegetation clearance activities please contact us on freephone 0508 800 800.

### Vegetation Clearance Activity Pathway



Please note that a consent may be required under the [NES-F \(2020\)](#).



## Rules relating to Vegetation Clearance in the One Plan

Please note:

- A term or expression marked with the symbol \* is defined in the glossary of the Plan.
- A term or expression marked with the symbol ^ is defined in the RMA.

Rule	Activity	Classification	Conditions/Standards/Terms	Control/Discretion Non-Notification
LF-LAND-R5 <i>Vegetation Clearance*</i>	<p>Except as regulated by RP-LF-LAND-R7, RP-ECO-R1 and RP-ECO-R2, any <i>vegetation clearance*</i> pursuant to s9(2) RMA and, as an <i>ancillary activity*</i>, any:</p> <ol style="list-style-type: none"> <li>1. diversion of <i>water*</i> pursuant to s14(2) RMA on the <i>land*</i> where the <i>vegetation clearance*</i> is undertaken,</li> <li>2. <i>discharge*</i> of sediment into <i>water*</i> pursuant to s15(1) RMA resulting from the <i>vegetation clearance*</i>.</li> </ol>	Permitted	<ol style="list-style-type: none"> <li>1. The activity must not take place on <i>land*</i> that is within a <i>coastal foredune*</i>.</li> <li>2. Any <i>discharge*</i> of sediment into <i>water*</i> as an <i>ancillary activity*</i> must not, after reasonable mixing, cause the receiving <i>waterbody*</i> to breach the water quality standards for visual clarity set out in RP-SCHED5 for that <i>waterbody*</i>.</li> <li>3. The activity must not occur on <i>land*</i> that is in, or within 5m of: <ol style="list-style-type: none"> <li>a. the <i>bed*</i> of a <i>river*</i> that is permanently flowing,</li> <li>b. the <i>bed*</i> of a <i>river*</i> that is not permanently, flowing and has an <i>active bed*</i> width greater than 1m</li> <li>c. the <i>bed*</i> of a <i>lake*</i>.</li> </ol> </li> <li>4. The activity must not occur on <i>land*</i> that is in, or within 10m of: <ol style="list-style-type: none"> <li>a. A <i>wetland*</i> as identified in RP-SCHED6</li> <li>b. Sites valued for Trout Spawning as identified in RP-SCHED2</li> </ol> </li> </ol>	
LF-LAND-R7 Specified <i>vegetation clearance*</i> , <i>land</i>	Pursuant to s9(2) RMA, except as regulated by RP-ECO-R1 and RP-ECO-R2, any:	Restricted Discretionary	<ol style="list-style-type: none"> <li>1. The activity must not take place on <i>land*</i> that is within a <i>coastal foredune*</i>.</li> </ol>	<p>Discretion is restricted to:</p> <ol style="list-style-type: none"> <li>1. the location, nature, scale, timing and</li> </ol>



<p><i>disturbance* or cultivation* in a Hill Country Erosion Management Site*</i></p>	<ol style="list-style-type: none"> <li>1. <i>land disturbance*</i> of more than 100m<sup>2</sup> per 12-month period, or</li> <li>2. <i>vegetation clearance*</i> of 1 ha or greater per <i>property*</i> per 12-month period where the age of the vegetation in the area to be cleared is greater than seven years, or</li> <li>3. <i>cultivation*</i>, undertaken within a <i>Hill Country Erosion Management Site*</i> and any ancillary: <ol style="list-style-type: none"> <li>1. diversion of <i>water*</i> pursuant to s14(2) RMA on the <i>land*</i> where <i>vegetation clearance*</i>, <i>land disturbance*</i> or <i>cultivation*</i>.</li> </ol> </li> </ol>		<ol style="list-style-type: none"> <li>2. The activity must not occur on <i>land*</i> that is in, or within 10m of: <ol style="list-style-type: none"> <li>a. the <i>bed*</i> of a <i>river*</i> that is permanently flowing</li> <li>b. the <i>bed*</i> of a <i>river*</i> that is not permanently flowing and has an <i>active bed*</i> width greater than 1m</li> <li>c. the <i>bed*</i> of a <i>lake*</i>,</li> <li>d. a <i>wetland*</i> as identified in RP-SCHED6,</li> <li>e. sites valued for Trout Spawning as identified in RP-SCHED2,</li> <li>f. Sites of Significance – Aquatic as identified in RP-SCHED2.</li> </ol> </li> </ol>	<ol style="list-style-type: none"> <li>duration of the activity,</li> <li>2. <i>effects*</i> of the activity and associated sediment run-off on soil conservation, surface <i>water*</i> quality and aquatic ecology and the methods to be taken to avoid, remedy or mitigate them,</li> <li>3. the requirement to provide an <i>Erosion and Sediment Control Plan*</i>, the content of and standard to which the plan must be prepared, the implementation of the plan, and the timing of when it must be prepared and submitted,</li> <li>4. the provision of greater setback distances from <i>waterbodies*</i> than those specified under condition (2) to provide greater protection to a <i>waterbody*</i> if required,</li> <li>5. the extent of non-compliance with the <i>water quality target*</i> for visual clarity set out in RP-SCHED5,</li> <li>6. duration of consent,</li> </ol>
---	--	--	---	---





				<p>7. review of consent conditions<sup>6</sup>,</p> <p>8. compliance monitoring,</p> <p>9. the matters in RP-LF-LW-P12.</p> <p><i>Resource consent<sup>^</sup> applications under this rule<sup>^</sup> will not be notified and written approval of affected persons will not be required (notice of applications need not be served<sup>^</sup> on affected persons).</i></p> <p><b>Advice Note:</b></p> <p>Examples of alternative methods to avoid, remedy or mitigate sediment can be found in:</p> <ol style="list-style-type: none"> <li>1. Chapters 12-24 of the Erosion and Sediment Control Guidelines for the Wellington Region (September 2002), and</li> <li>2. The Code of Practice for Commercial Vegetable Growing in the Horizons Region (Horticulture New Zealand).</li> </ol>
LF-LAND-R8 <i>Vegetation clearance*, land disturbance*, cultivation* or forestry*</i> that does not comply with	Except as regulated by RP-ECO-R1 and RP-ECO-R2, any <i>vegetation clearance*, land disturbance*, cultivation* or forestry*</i>	Discretionary		



<p>RP-LF-LAND-R1 to RP-LF-LAND-R7</p>	<p>pursuant to s9(2) RMA that does not meet the <i>conditions</i><sup>^</sup>, standards or terms of RP-LF-LAND-R1, RP-LF-LAND-R2, RP-LF-LAND-R3, RP-LF-LAND-R4, RP-LF-LAND-R5, RPLF-LAND-R6 or RP-LF-LAND-R7 and as an ancillary activity*, any:</p> <ol style="list-style-type: none"> <li>1. disturbance of the <i>bed</i>* of a <i>river</i>* or <i>lake</i>* by <i>forestry</i>* authorized by those <i>rules</i><sup>^</sup> pursuant to s13(1) RMA</li> <li>2. diversion of <i>water</i>* authorized by those <i>rules</i><sup>^</sup> pursuant to s14(2) RMA, or</li> </ol> <p><i>discharge</i>* of sediment or <i>slash</i>* authorised by those <i>rules</i><sup>^</sup> pursuant to s15(1) RMA.</p>			
---------------------------------------	--	--	--	--