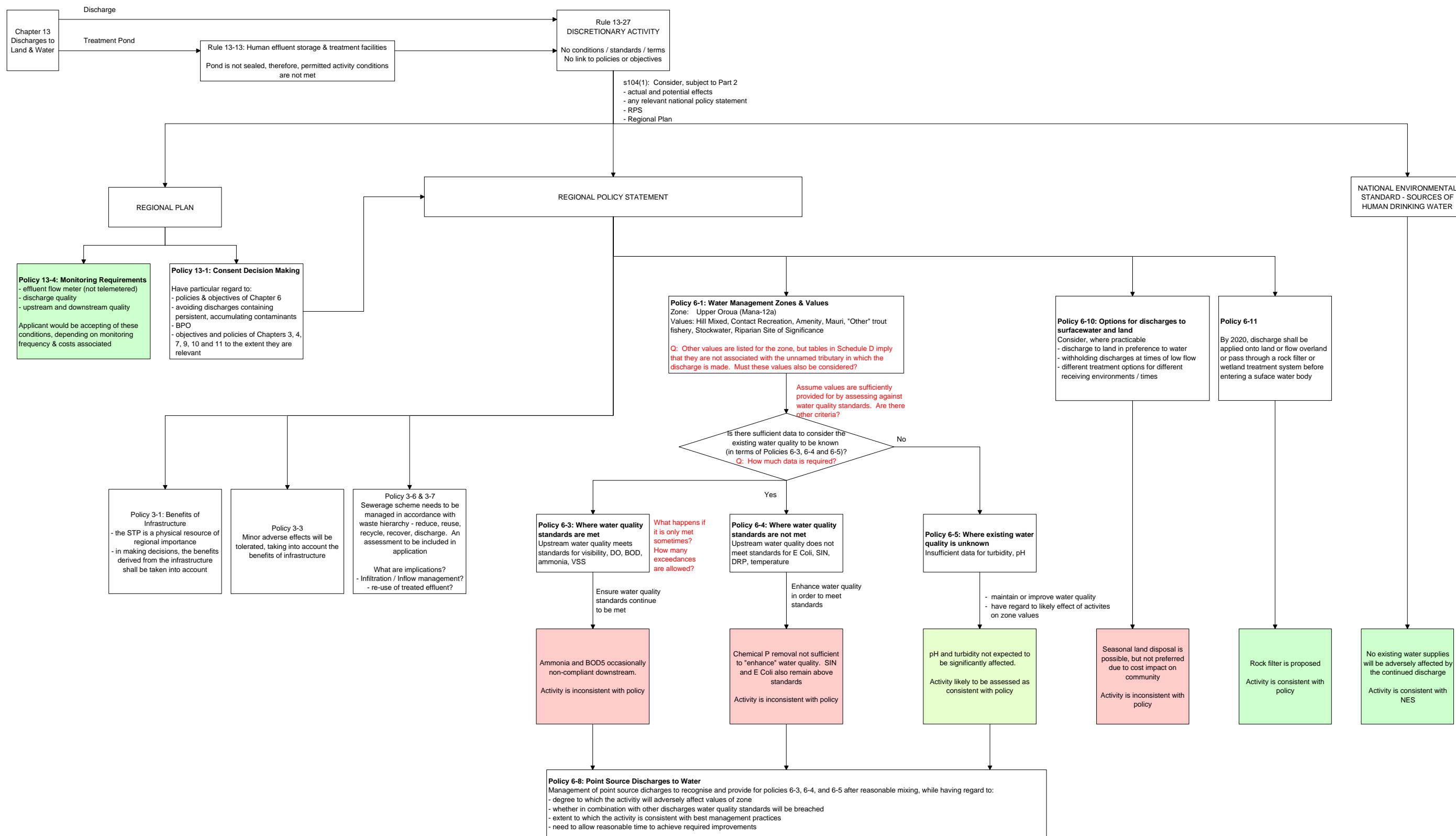
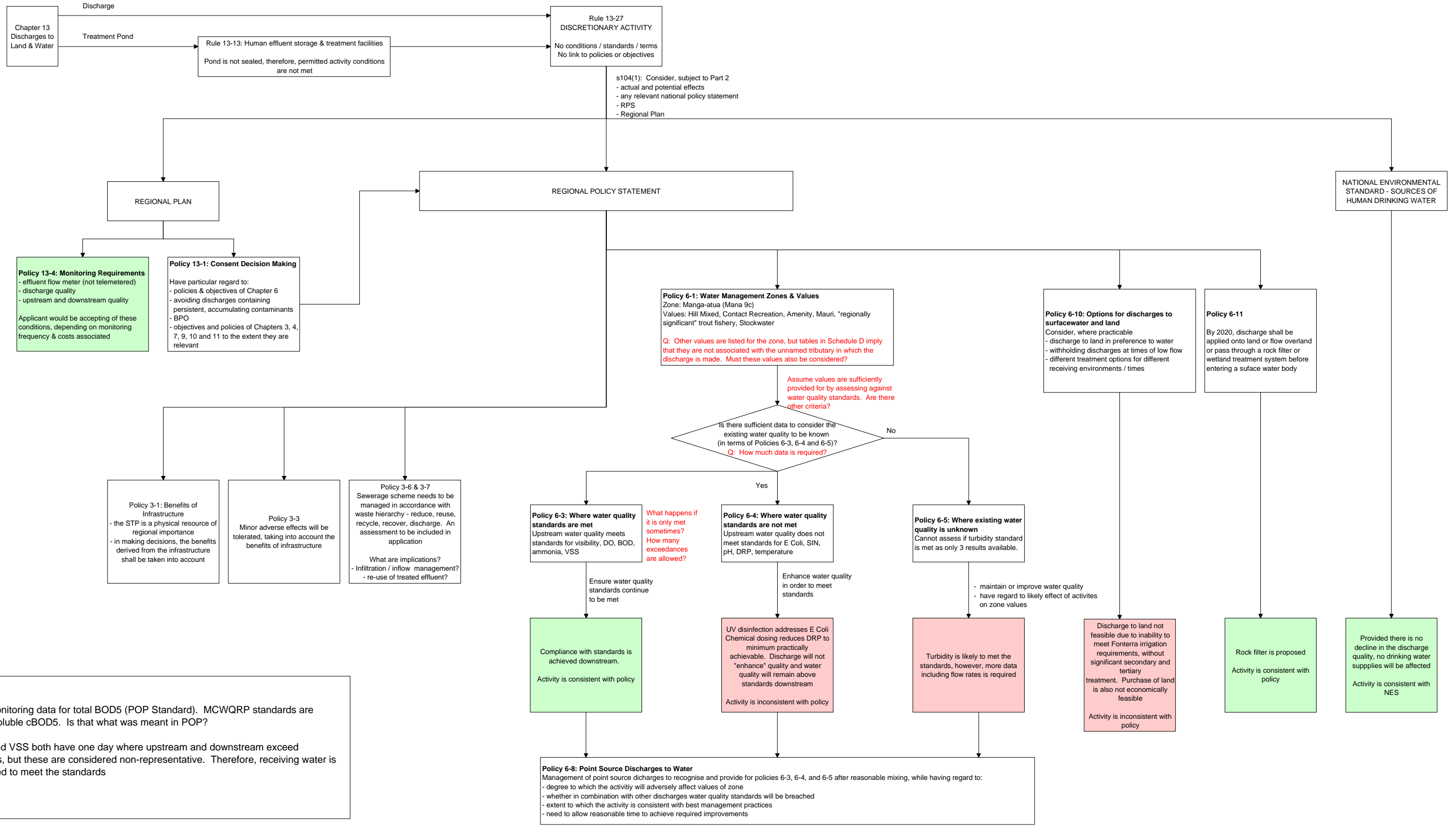


**Feilding STP
Discharge to Oroua River**



**Woodville STP
Discharge to Manga-atua Stream**



NOTES

1. No monitoring data for total BOD5 (POP Standard). MCWQRP standards are around soluble cBOD5. Is that what was meant in POP?

2. DO and VSS both have one day where upstream and downstream exceed standards, but these are considered non-representative. Therefore, receiving water is considered to meet the standards

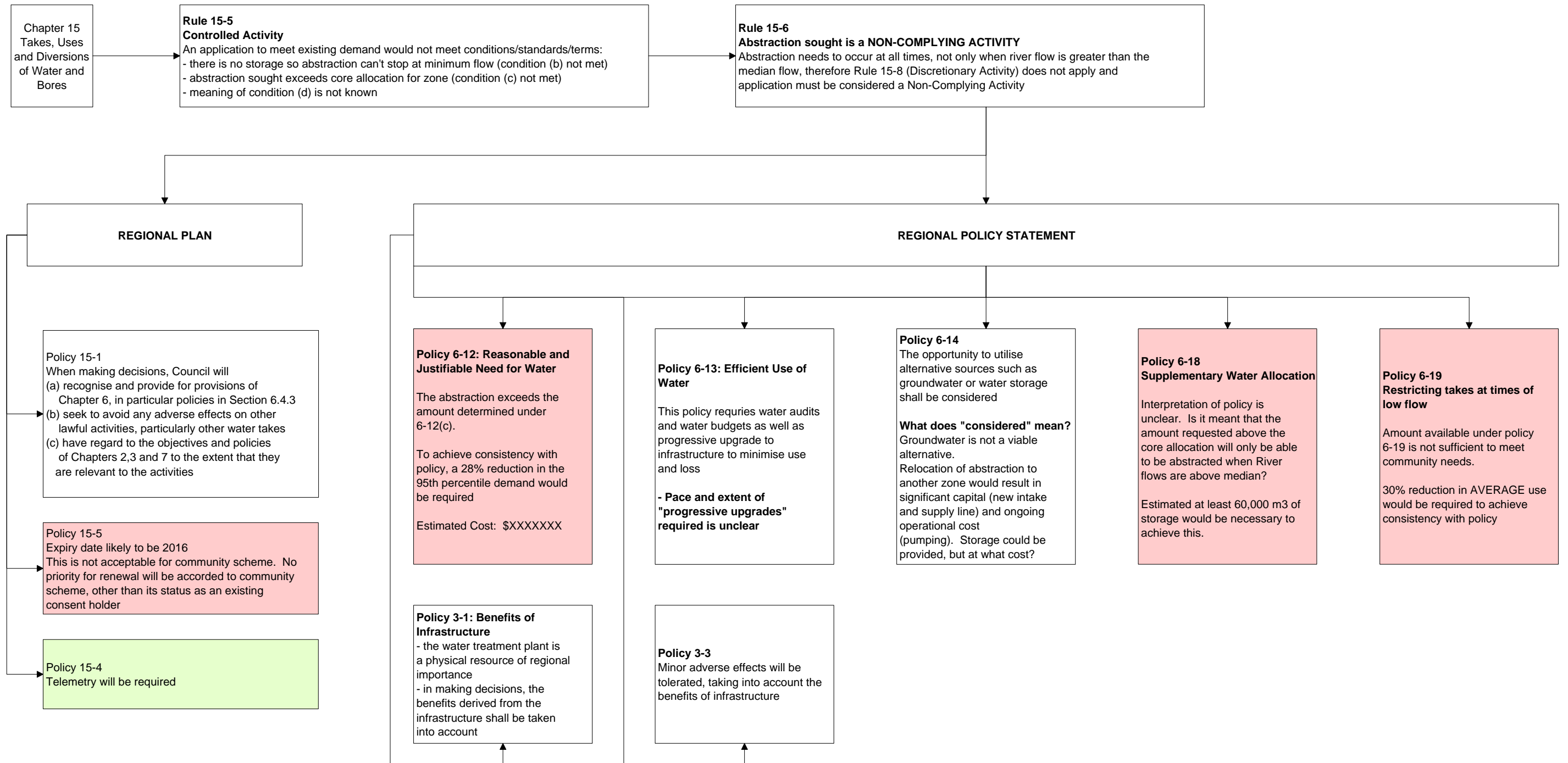
DANNEVIRKE WATER SCHEME
Application for Abstraction at Existing Demand Levels

Existing Demand

- 95th Percentile = 7335 m3/day
- Average Demand = 6,245 m3/day

POP Provisions

Water Management Zone is Upper Tamaki (Mana 3)
 Minimum Flow - 0.238 m3/s
 Cumulative Core Allocation Limit = 0.078 m3/s (6,739 m3/day)



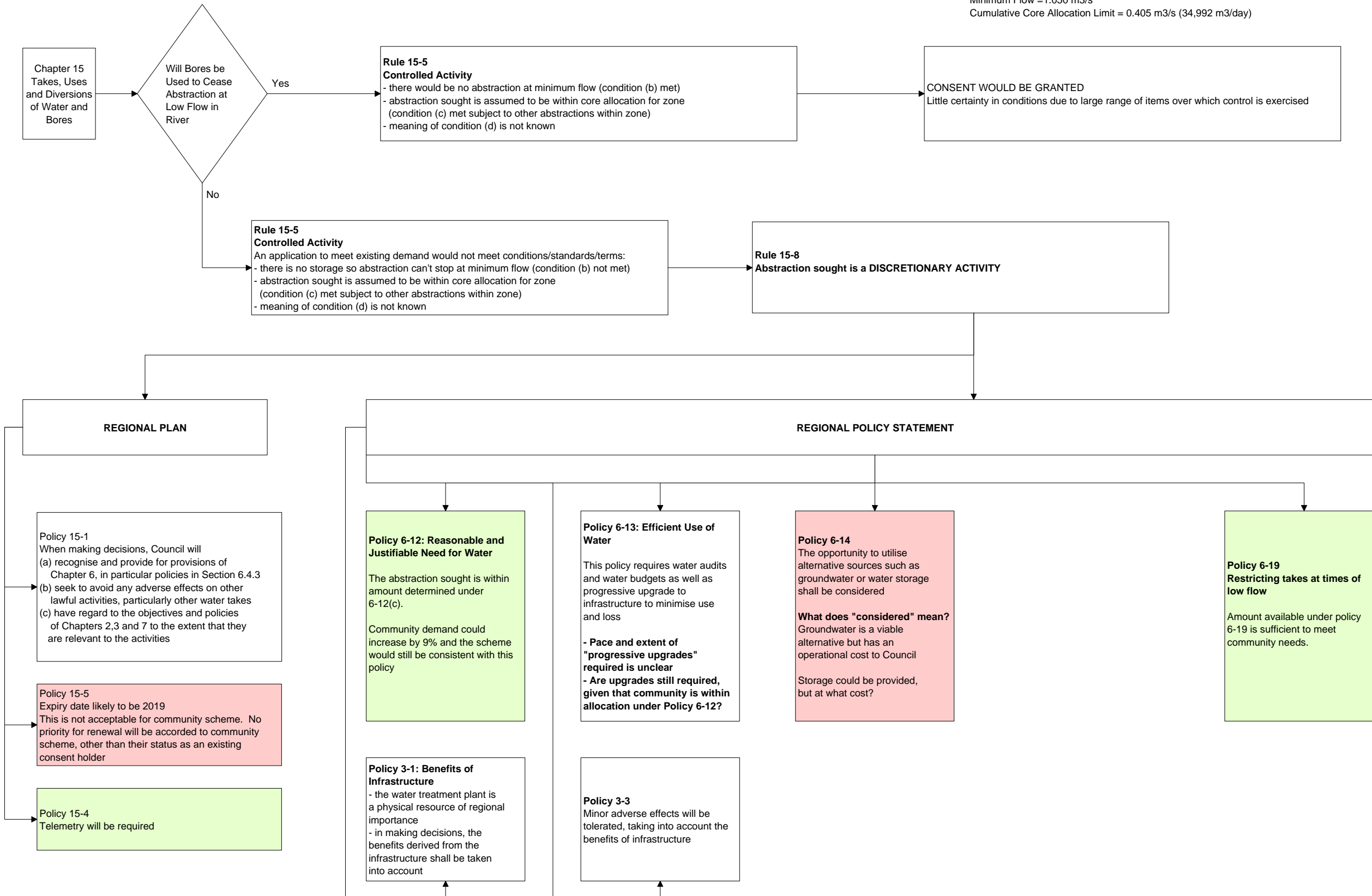
FEILDING OROUA RIVER WATER SUPPLY
Application for Abstraction at Existing Demand Levels

Existing Demand

- 95th Percentile = 9000 m3/day
- Average Demand = 7000 m3/day

POP Provisions

Water Management Zone is Upper Oroua (Mana 12a)
 Minimum Flow = 1.050 m3/s
 Cumulative Core Allocation Limit = 0.405 m3/s (34,992 m3/day)



STANWAY-HALCOMBE RURAL WATER SUPPLY

Application for Abstraction at Existing Demand Levels

Existing Demand

- 95th Percentile = 1300 m3/day
- Average Demand = 850 m3/day

POP Provisions

Water Management Zone is Coastal Rangitikei (Rang 4a)
 Minimum Flow = 10.230 m3/s
 Cumulative Core Allocation Limit = 6.410 m3/s (553,824 m3/day)

