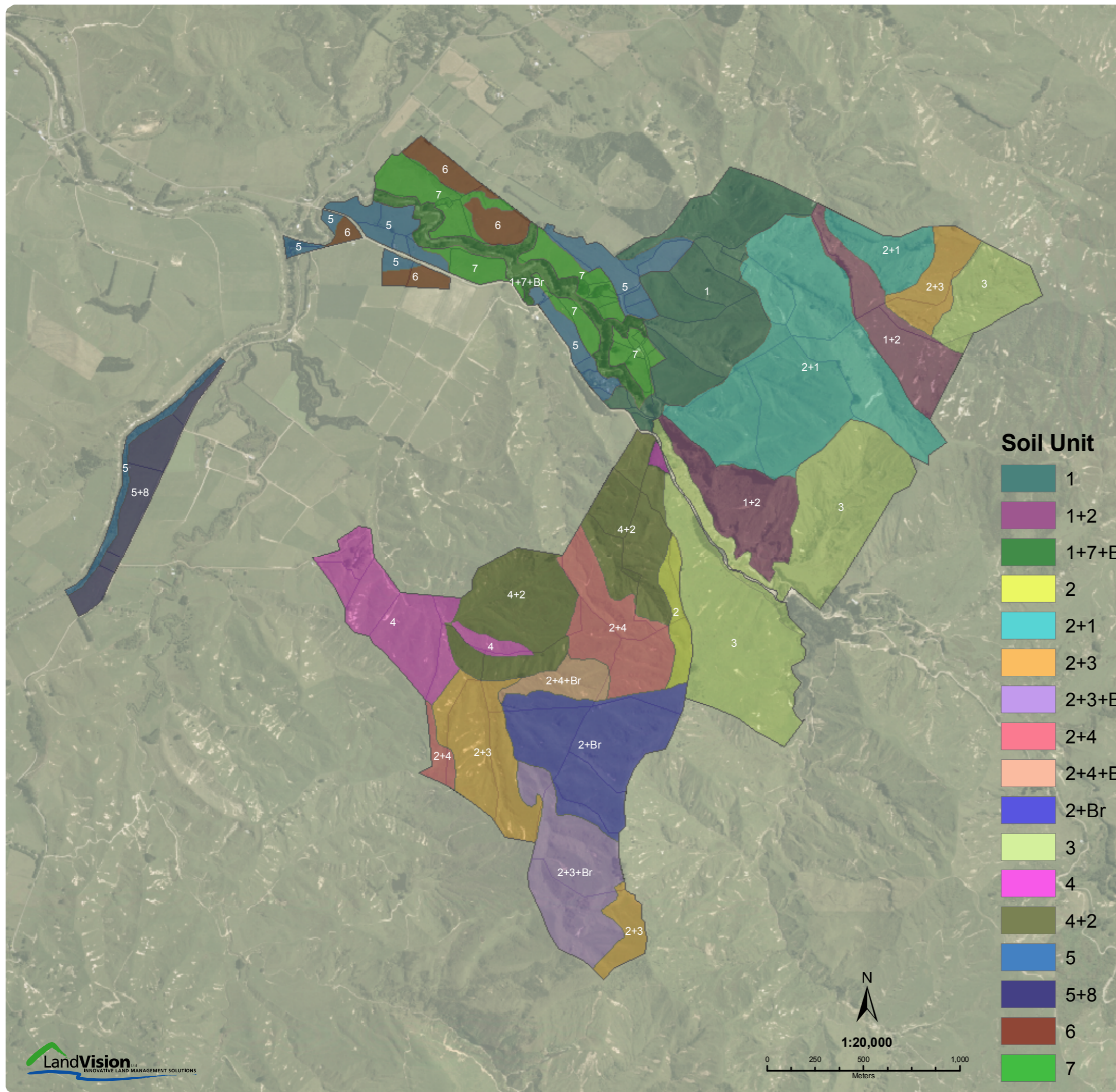


SOIL RESOURCES

Joe Bloggs

Left Field



Name: Soil 1

Profile description: Imperfectly drained moderately developed fine nutty crumb sandy silt loam, on weakly to moderately developed nutty crumb sandy silt loam on weakly developed few mottles sandy silt loam on massive silty sandstone.



Name: Soil 2

Profile description: Moderately well drained moderately developed fine nutty crumb silt loam, on firm medium blocky few nuts clay loam, on massive platy and blocky clay loam. On limestone.



Name: Soil 3

Profile description: Moderately well drained weakly developed fine to very fine nutty crumb silt loam; on weakly developed fine nutty crumb and blocky with few medium to large sandstone chunks silty clay loam; on jointed silty sandstone.



Name: Soil 4

Profile description: Imperfectly drained moderately developed fine crumbly nut sandy silt loam, on massive few blocky few orange mottles sandy silt loam, on massive blocky with few orange mottles sandy clay loam formed from coarse siltstone.



Name: Soil 5

Profile description: Imperfectly drained moderately developed fine nutty crumb fine silt loam, on weakly developed fine nutty few concretions and many mottles sandy silt loam on loess.



Name: Soil 6

Profile description: Well drained moderately developed nutty crumb sandy silt loam, on weakly developed sandy loam with many fine to large river stones. On alluvium and gravels.

Comments: Has been pugged



Name: Soil 7

Profile description: Well drained moderately developed fine nutty crumb, sandy silt loam, on weakly developed fine nutty few to many fine to very fine gravels sandy loam. On alluvium and gravels



Name: Soil 8

Profile description: Imperfectly to poorly drained moderately developed fine crumbly nutty structure with a few orange mottles sandy silt loam, on weakly developed crumbly nut with many orange mottles sandy loam. On alluvium

Date:	1 April 2008	Surveyors:	Landvision Ltd.
Property owner(s):	Left Field	Survey scale:	1:8,000
Property:	J Bloggs RD 2 Westham	Aerial photo:	Supplied by Horizons Regional Council (0.75m orthophoto from Terralink). Flown 2004/05.