

Notes for track changes. Recommendations made by the Historic Heritage officer are shown in **Blue**. Recommendations made by the Water officer are shown in **Green**. Recommendations made by the Supplementary Officers Report for water are shown in **Red**. Sentences shown in ~~black~~ strikethrough or are recommended within the Officer's Report to be relocated to other parts of the document, those sentences that have been relocated are shown in ~~black~~ underline. Words recommended to be added are shown in underline, words recommended to be removed are shown in ~~strike through~~

Terms defined within the Proposed One Plan glossary are *italicised* and marked with an asterisk (\*) symbol. Terms defined in the Resource Management Act 1991 are *italicised* and marked with a caret (^) symbol.

## 6 Water

### 6.1 Scope and Background

#### 6.1.1 Scope

This chapter addresses the management of fresh water in the Manawatu-Wanganui Region. It covers:

- **Wwater Mmanagement Sub-zones<sup>\*1</sup> and ~~v~~Values** – the establishment of Wwater Mmanagement Sub-zones<sup>\*1</sup> and associated water management values for each sub-zone<sup>1</sup>, for the purpose of managing water quality, water quantity and activities in the beds of rivers and lakes beds.
- **Surface water quality** – the establishment of water quality standards for rivers and lakes water bodies<sup>2</sup>, in order to give effect to the values, together with a policy regime of maintaining water quality in those Wwater Mmanagement Sub-zones<sup>\*1</sup> that meet their water quality standards, and improving water quality over time in those Wwater Mmanagement Sub-zones<sup>\*1</sup> that do not.
- **Groundwater quality** – the maintenance of existing groundwater quality to maintain its existing values and potential for future uses and values.
- **Discharges and land- use activities affecting water quality** – the management of discharges into surface water, discharges onto or into land, and diffuse run-off and other land- use activities affecting surface water and groundwater quality.
- **Surface water quantity and allocation** – the establishment of minimum flows and allocation regimes for rivers, and the management of water takes and other activities affecting surface water quantity.
- **Groundwater quantity and allocation, and bores**<sup>\*</sup> – the establishment of Ggroundwater Mmanagement Zzones (GWMZs)<sup>\*</sup> and Groundwater Management Sub-zones, identification of the respective allocable volumes in each sub-zone and the active management of groundwater takes.
- **Beds of rivers and lakes** – the management of activities that disturb the beds of rivers and lakes, the management of existing and new structures in the beds of rivers and lakes, and the establishment of sustainable gravel extraction limits for rivers.

<sup>1</sup> Consequential changes as a result of changes to Schedule D

<sup>2</sup> Water officers report – recommendation WTR 6



The effects of hill country erosion on water quality are addressed in Chapter 5. The ecological impacts of takes, diversions, discharges and drainage on *rare habitats*<sup>3</sup>, ~~and~~ *threatened habitats*<sup>\*</sup> and *at-risk habitats*<sup>\*</sup> are addressed in Chapter 7.

### 6.1.2 Overview

Water is critical ~~to life for life to exist~~. People living in the Manawatu-Wanganui Region enjoy a temperate climate, a large number of rivers, streams and lakes and an extensive groundwater system. The Region does not experience the severity of droughts that impact on some other parts of New Zealand and generally there is enough water to meet everyone's needs. People have grown up with ~~an expectation of~~<sup>4</sup> access to clean, safe water. But importance ready access means that water has not always been valued highly. The health of the surface water resource has steadily declined in most catchments as a result.

Despite this decline, there has been a revolution around water in the past few decades. In response to public concerns, significant improvements have been made to the quality of discharges from towns and industrial *sites*<sup>\*</sup>. For example, ~~raw untreated~~<sup>4</sup> sewage is no longer discharged directly into ~~water~~*ways bodies*<sup>\*</sup>, and rivers no longer ~~run red from the~~ ~~receive~~<sup>4</sup> blood discharged from freezing works. Many former discharges to water, particularly discharges of dairy shed effluent, are now discharged to land. New large water takes, such as those associated with hydroelectric development, are carefully managed to ensure that the downstream needs of people and ecosystems are catered for. Although there have been substantial improvements in the quality of point source discharges to water, ~~some~~ improvement is still possible and is necessary.

There has been a substantial intensification within the agricultural sector in recent years. This has contributed to a vibrant and booming regional economy but has also increased pressure on ~~our~~ *the Region's* water resources. There has been a significant increase in irrigation demand and the amount of nutrients leaching to surface water and groundwater. Although the impacts of agricultural intensification are less obvious than those caused by the major point source discharges and abstractions mentioned above, they have increased progressively over time.

As ~~our~~ *the* Region has grown, we have significantly altered the physical nature of many of ~~our~~ *its* ~~water~~*ways bodies*<sup>\*</sup> with structures, drainage and flood protection works, particularly in the Manawatu Plains. These changes have led to a poor and declining state of physical health in ~~our~~ *the Region's* water ~~ways bodies~~<sup>\*</sup>.

The impact of discharges and run-off on water quality and the increasing demand for water abstraction are two of the four most critical issues addressed in this Plan.

### 6.1.3 Water Quantity

The demand on surface water and groundwater resources is one of the most critical issues addressed in this Plan.

Water from the two main fresh water sources within the Region – surface water (rivers and lakes) and groundwater – is abstracted for a variety of uses, including drinking water supply, stock water~~ing~~ *supply*, irrigation, electricity generation and industrial use.

<sup>3</sup> Consequential change as a result of the Provisional Determinations

<sup>4</sup> Water officers report – recommendation WTR 8



The single largest user of water in the Region is the energy sector. Hydroelectric power generation takes are concentrated around Mount Ruapehu and on the Mangahao River. The amount of water used for power generation has not changed significantly in the past decade, although there is potential for more hydroelectricity generation in the Region over the next decade.<sup>5</sup>

In contrast, other uses have steadily increased over the past few decades in response to towns growing, stock numbers increasing, and the establishment of industrial plants. In recent years there has been a dramatic increase in water demand. From 1997 to 2004, consented groundwater takes almost doubled and consented surface water takes more than doubled (Table 6.1).

**Table 6.1** Change in consented water abstraction volumes from 1997 to ~~2004~~ 2009,<sup>5</sup> excluding hydroelectric power generation<sup>5</sup>

| Source        | Sector       | 1997 to 2004 percentage change in consented water takes |                          |              |
|---------------|--------------|---|--------------------------|--------------|
|               |              | 1997 (m <sup>3</sup> /d)                                | 2004 (m <sup>3</sup> /d) | Increase (%) |
| Groundwater   | All Sectors  | 287,000   | 425,000                  | +45%         |
| Surface water | Agriculture  | 70,668  | 291,949                  | +313%        |
|               | Industry     | 38,835  | 56,003                   | +44%         |
|               | Water supply | 162,024   | 219,088                  | +34%         |
|               | All Sectors  | 271,527   | 567,040                  | +108%        |

| Total volume             | Surface/ riparian (m <sup>3</sup> /day) | Groundwater (m <sup>3</sup> /day) | Total Surface water plus groundwater (m <sup>3</sup> /day) |
|--------------------------|---|-----------------------------------|--|
| 1997                     | 271,527                                 | 290,172                           | 561,699  |
| 2004                     | 567,040                                 | 426,267                           | 993,307  |
| 2009                     | 616,620                                 | 537,179                           | 1,153,799  |
| Total increase 1997-2007 | 345,093                                 | 247,008                           | 592,101  |

The greater the amount of water taken from a waterway body\*, the greater the potential impact on instream life, recreational activities (including<sup>5</sup> fishing and swimming), cultural/spiritual values and the ability of the water body\* way to assimilate waste\*. Even more important than the volume of water abstracted is the timing of abstraction. Rivers in the Region experience natural low flows during summer, which coincides with the period of greatest demand. The taking of water during winter higher flows generally has little impact, but even small takes during summer low flow conditions can have major impacts and measures which avoid the adverse effects from takes during the more critical summer low flow conditions should be encouraged. Maintaining natural flow variability is important for the habitat requirements of fish species, natural character and water quality<sup>5</sup>. The ever-increasing demand on the Region's our surface water resource means that we must manage it must be managed to ensure that the water taken is used efficiently, and is therefore available to as many users as possible.

Groundwater monitoring indicates that groundwater levels are stable and research indicates that there is sufficient water for all users at a regional scale. A recent increase in large groundwater takes along the west coast has raised the potential

<sup>5</sup> Water officers report – recommendation WTR 9



for saltwater intrusion. This occurs when enough water is removed from an aquifer to allow seawater to migrate inland. Groundwater contaminated with saltwater is no longer suitable for irrigation or as stock water. Seawater-contaminated groundwater will clear with time, but the timescale is measured in centuries.

The high density of *bores\** in some areas has caused localised problems. These include:

- (a) impacts on other groundwater users. Allowing too many new users to access the groundwater resource will impact on the amount that is available to existing users and can affect the ability of existing *bores\** to draw water.
- (b) impacts on groundwater-fed streams, lakes and wetlands. Many of the streams, lakes and wetlands along the west coast of the Region ([e.g. Lakes Papaitonga and Horowhenua](#))<sup>5</sup> are dependent upon groundwater. Groundwater is particularly important during summer, as it may be the only source of inflow.

*Bores\** are the main means of accessing groundwater resources. They provide the principal way of studying the subsurface environment by enabling sampling of subsurface geology, allowing direct measurement of groundwater levels and quality and allowing testing of aquifer yields. This *Plan* adopts the NZS 4411:2001 Environmental Standard for Drilling of Soil and Rock in its entirety for the management of *bores\** (design, drilling, completion, development, testing, *maintenance\**, cleaning/disinfection, record keeping and decommissioning).

#### 6.1.4 Water Quality

There is significant variation in water quality across the Region. Streams and rivers emerging from the mountains or areas that have retained their original vegetation cover tend to have very good water quality. The one exception to this is the Whangaehu River, ~~which that~~ flows from the crater lake on Mt Ruapehu. It is naturally acidic and contains high levels of sulphur and heavy metals.

As ~~water~~ *ways bodies\** flow towards the sea, they pick up sediment and nutrients from the surrounding land. As would be expected, water quality in the lower reaches of rivers and streams is poorer than in the headwaters.

In the past, the biggest threats to water quality were municipal (e.g. sewage), industrial (e.g. meat works and fellmongers) and agricultural (dairy shed effluent) discharges. Although considerable improvements have been made to discharges to water, further ~~measures are~~ *improvement is still* possible *and necessary*.<sup>6</sup>

The intensification in agriculture during the past 10 to 15 years has been especially marked in the dairy sector. Raising stock numbers increases the quantity of dairy shed effluent requiring disposal, the quantity of stock urine produced (a concentrated source of nutrients), and the opportunities for stock to access ~~water~~ *ways bodies\**. The agricultural sector is recognising the impact it is having on ~~the nation's~~ *New Zealand's* ~~water~~ *ways bodies\** and has started to act. The dairy sector was the first to respond, with the Dairying and Clean Streams Accord (an agreement between Fonterra, the Ministry for the Environment, Regional Councils and others on an approach to enhance water quality). ~~However, the results of These~~ voluntary approaches ~~are not being seen~~ *are one mechanism to assist with the* as lowering of nutrient or faecal levels in the ~~water~~ *bodies\* rivers and further improvements are needed*.<sup>6</sup>

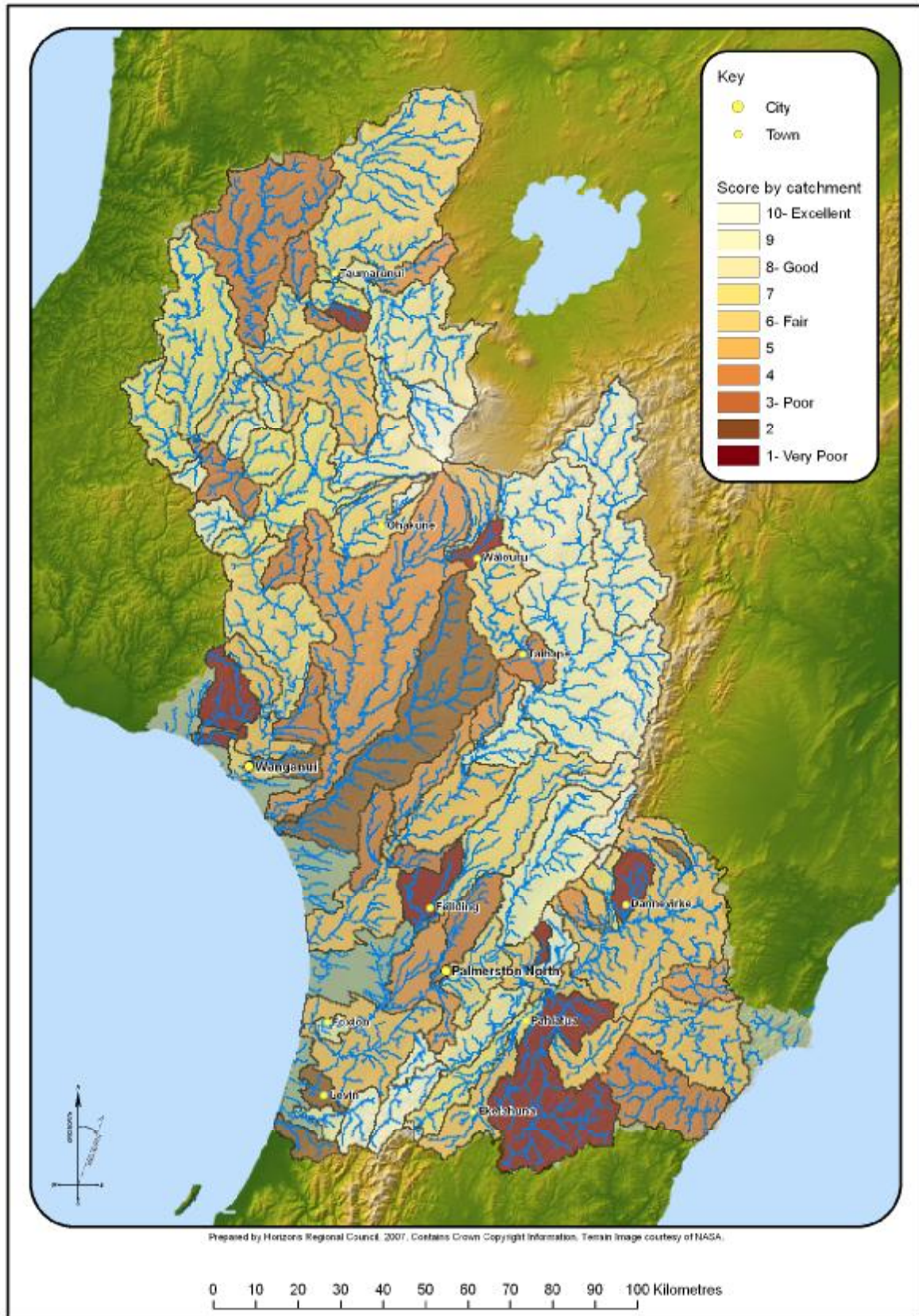
<sup>6</sup> Water officers report – recommendation WTR 10



Groundwater quality within the Region varies according to both depth and location. Generally, deeper groundwater is of higher quality. For example, shallow groundwater within the Horowhenua District near Levin has high concentrations of nitrates, which are believed to be the result of septic tank discharges and *fertiliser*\* use on market gardens. There have been no significant changes in groundwater quality over the length of the Regional Council's monitoring record (more than 15 years). There is no evidence that groundwater quality is deteriorating.

The overall state of fresh water quality in the Manawatu-Wanganui Region is as follows:

- (a) The middle reaches of many rivers are unsafe to swim in because of bacterial contamination, or are unpleasant to swim in because of slime (periphyton) growth (Figure 6.1). Elevated nitrate and phosphate levels promote slime growth. The slime also impacts on fish and instream invertebrate communities.
- (b) The lower reaches of many rivers have high concentrations of bacteria, nitrates, phosphates and sediments, and these levels are increasing.
- (c) There is minimal contamination of surface water from heavy metals, hydrocarbons and other toxic substances.
- (d) The quality of groundwater in the Region is generally suitable for stock needs and irrigation, with a low sodium hazard and a low-medium salinity hazard.
- (e) Nitrate levels are high in shallow groundwater in parts of the Region, but the levels have not changed during the period of monitoring.
- (f) Groundwater is free of herbicides and pesticides.



**Figure 6.1** Suitability of water quality for contact recreation within the Region



### 6.1.5 River and Lake Beds

People have always been attracted to rivers and lakes to live, work and play. Despite the economic, cultural, social and environmental importance of rivers and lakes, many of the waterways bodies\* in the Region have been highly modified over the years. Works to control flooding and erosion, dams, and diversions for hydroelectricity generation can be large scale and have significant effects on the physical nature of our waterways bodies\*. Smaller-scale changes like river crossings and small dams can have negative cumulative impacts. Urban expansion often alters watercourses. Gravel extraction, when not managed well, can lead to increased flooding and erosion risk.

This modification has contributed to the economic growth and wellbeing of our Region, but it has also negatively altered the character and ecology of most waterways bodies\* in the Region, impacting on cultural values attributed to waterways bodies\* and leading to the loss or fragmentation of indigenous plant and animal populations.

## 6.2 Significant Resource Management Issues

### Issue 6-1: Water quality

The quality of most many<sup>7</sup> rivers and lakes in the Region has declined to the point that ecological values are compromised and contact recreation such as swimming) is considered unsafe. The principal causes of this degradation are:

- (a) nutrient enrichment caused by run-off and seepage leaching<sup>7</sup> from agricultural land, discharges of treated wastewater, and septic tanks
- (b) high turbidity and sediment loads caused by land erosion, river channel erosion, run-off from agricultural land and discharges of stormwater
- (c) pathogens from agricultural run-off, urban run-off, discharges of sewage, direct stock access to water bodies\* and discharges of agricultural and industrial waste\*.

Shallow groundwater in areas of intensive rural subdivision and horticulture in the Horowhenua and Tararua districts has elevated nitrate levels in excess of the New Zealand drinking water standard. However, the quality of groundwater in the Region is generally suitable for stock needs and irrigation, and there has been no evidence of deteriorating groundwater quality during the past 15 years.

### Issue 6-2: Water quantity and allocation

The use of both surface water and groundwater has increased dramatically during the last decade. The demand for surface water in the Ohau, Oroua and parts of the upper Manawatu catchments already exceeds supply, and other catchments are experiencing marked increases. This increased demand has the potential to have adverse effects on both instream values and the natural character of streams, rivers and wetland and lakes, if not managed.<sup>8</sup> The amount of groundwater is generally capable of meeting demand within the Region, although there is a need to actively manage effects between bores\* at a local level, the effects of bores\* on surface water,<sup>8</sup> and to be vigilant about the risk of saltwater intrusion along the west coast.

<sup>7</sup> Water officers report – recommendation WTR 13

<sup>8</sup> Water officers report – recommendation WTR 14



### Issue 6-3: River and lake beds

The demand for flood and erosion control to protect many types of land use has led to significant modification of the Region's waterways bodies.<sup>9</sup> Structures required to be located within the beds of rivers and lakes, including bridges, culverts, water intake and discharge pipes and hydroelectricity structures, also affect the natural character of waterways bodies.<sup>9</sup> These types of uses and developments, in conjunction with gravel extraction which while having beneficial effects in terms of flood mitigation,<sup>9</sup> have modified, and continue to modify the physical characteristics and ecology of many of the Region's waterways bodies.<sup>9</sup>

## 6.3

### Objectives

#### Objective 6-1: Water management values

Surface water bodies<sup>Δ\*</sup> are managed in a manner which sustains safeguards<sup>10</sup> their life-supporting capacity and recognises and provides for the values set out in Schedule D Ba by 2030.<sup>10</sup>

This objective relates to Issues 6-1, 6-2 and 6-3.

#### Whāinga 6-1: He ūara whakahaere wai

*Ka āta whakahaeretia ngā mata wai i runga i te tikanga tauwhiro hei tiaki oranga, ā, ka whakamanatia, ka taunakitia hoki ngā Ūara kei roto i Schedule D.*

[Maori translation required]

#### Objective 6-2: Water quality

- (a) Surface water quality is managed to ensure that:
- (i) Water quality is maintained or enhanced in those rivers water bodies<sup>Δ\*</sup> where the existing water quality is sufficient to at a level which supports the values of the river water bodies<sup>Δ\*</sup><sup>11</sup>
  - (ii) water quality is enhanced in those rivers where the existing water quality is not sufficient to support the values of the river<sup>11</sup>
  - (iii) accelerated eutrophication or and<sup>11</sup> sedimentation of lakes<sup>Δ</sup> in the Region is prevented or minimised
  - (iv) the special values of rivers<sup>Δ</sup> protected by Water Conservation Orders<sup>Δ</sup> and local water conservation notices<sup>11</sup> are maintained.
- (b) Groundwater quality is managed to ensure that the existing groundwater quality is maintained to preserve its existing and future uses and values and potential for future uses.<sup>11</sup>

This objective relates to Issue 6-1.

#### Whāinga 6-2: Te kounga o te wai

- (a) *Ka whakahaeretia te kounga o te mata wai kia hua ai:*
- (i) *ka tiakina te kounga o te wai kei roto i ngā awa he kaha tonu te kounga o te wai hei hāpai i ngā ūara o te awa*
  - (ii) *ka whakapaingia te kounga o te wai kei roto i ngā awa kāore i te kaha te kounga o te wai hei hāpai i ngā ūara o te awa*

<sup>9</sup> Water officers report – recommendation WTR 15

<sup>10</sup> Water officers report – recommendation WTR16

<sup>11</sup> Water officers report – recommendation WTR17





- (iii) *ka āraia, ka whakaitingia rānei te tere parahanga ā-matū whakamōmona rānei, parataiaotanga rānei o ngā roto o te Rohe, ā*
  - (iv) *ka whakamarumarutia ngā ūara motuhake o ngā awa e ngā water conservation orders, ā, ka tiakina ngā local water conservation notices.*
- (b) *Ka whakahaeretia te kounga o te waiopapa kia hua ai ka tiakina te kounga o te waiopapa.*  
[Maori translation required]

### Objective 6-3: **Water<sup>^</sup> quantity and allocation**

Water<sup>^</sup> quantity is managed to enable people, industry and agriculture to take and use water<sup>^</sup> to meet their reasonable needs while ensuring that providing for the following:<sup>12</sup>

- (a) For surface water<sup>^</sup>:
  - (i) minimum flows and allocation regimes are set for the purpose of maintaining or enhancing the existing life-supporting capacity of rivers water bodies<sup>Δ\*</sup> and providing for other identified values of rivers-as-necessary-water bodies<sup>Δ\*</sup><sup>12</sup>
  - (ii) in times of water<sup>^</sup> shortage, takes are restricted to those that are essential to the health or safety of people, communities or stock, for drinking water<sup>12</sup> and other takes are ceased
  - (iii) the amount of water<sup>^</sup> taken from lakes<sup>^</sup> does not compromise their existing life-supporting capacity
  - (iv) the requirements of Water Conservation Orders<sup>^</sup> and Local Water Conservation Notices<sup>^</sup><sup>12</sup> are upheld.
- (b) For groundwater:
  - (i) takes do not cause a significant adverse<sup>12</sup> effect<sup>^</sup> on the long-term groundwater yield
  - (ii) groundwater takes that are hydrologically connected to rivers<sup>^</sup>, lakes<sup>^</sup> or wetlands<sup>^</sup> are managed within the minimum flow and allocation regimes established for those water bodies<sup>Δ\*</sup>, or to protect their life-supporting capacity
  - (iii) the effects<sup>^</sup> of a groundwater take on other groundwater takes are managed
  - (iv) saltseawater<sup>12</sup> intrusion into coastal aquifers, induced by groundwater takes, is avoided.
- (c) In all cases, water<sup>^</sup> is used efficiently.

This objective relates to Issue 6-2.

### Whāinga 6-3: **Te nui o te wai me tōna tūaritanga**

*Ka whakahaeretia te wai kia āhei ai te tangata, ngā ahumahi, me te hunga ahuwahenua te tango me te whakamahi i te wai hei āhua whakatutuki i ō rātou hiahia, kia hua hoki:*

- (a) *Mō te mata wai:*

<sup>12</sup> Water officers report – recommendation WTR18



- (i) *ka whakatauria ngā rerenga iti me ngā tikanga whakahaere tūaritanga hei tiaki i te oranga tonutanga o ngā awa, hei taunaki hoki i ngā ūara o ngā awa e tika ana*
  - (ii) *i ngā wā kōpaka wai, ka whakatīkina te tangohanga wai hāunga hei tiaki i te hauora, te haumaru rānei o te tangata, ngā hapori, kararehe pāmu rānei, ā, ka katia rawatia te tango mō take kē atu e kore e waimeha te oranga tonutanga mā te tango wai – ahakoa nui, iti rānei – i ngā roto, ā*
  - (iv) *ka hāpaitia ngā whakaritenga o ngā water conservation orders me ngā local water conservation notices.*
- (b) *Mō te waiopapa:*
- (i) *e kore te tangohanga wai e whakapā kaha i te huanga roa o te waiopapa*
  - (ii) *ka whakahaeretia ngā tangohanga waiopapa e pā ana ki ngā awa, roto, papa waiwai rānei i runga i ngā tikanga whakahaere rerenga wai iti, tūaritanga hoki kua whakaritea mō aua wai, hei whakamarumaruru rānei i ō rātou oranga tonutanga*
  - (iii) *ka whakahaeretia ngā pānga o ngā tangohanga waiopapa ki tangohanga waiopapa kē, ā*
  - (iv) *ka pareā te urunga o te waitai, nā te tangohanga waiopapa, ki roto i ngā kahupapa takutai moana, ā.*
- (c) *I ngā wā katoa ka whakamahia te wai i runga i te tikanga whakamau.*  
[Maori translation required]

#### **Objective 6-4: River<sup>^</sup> and lake<sup>^</sup> beds<sup>^</sup>**

All **significant**<sup>13</sup> values of **the beds<sup>^</sup>** of **river<sup>s</sup><sup>^</sup>** and **lake<sup>s</sup><sup>^</sup> beds** are recognised and provided for, including enabling future use and development of **the beds<sup>^</sup>** of **river<sup>s</sup><sup>^</sup>** and **lake<sup>s</sup><sup>^</sup> beds**, provided other values of the **river<sup>^</sup>** or **lake<sup>^</sup>** are not compromised.

**This objective relates to Issue 6-3.**

#### **Whāinga 6-4: Ngā awa me ngā papa roto**

*Ka whakamanatia, ka pukumaharatia hoki ngā ūara nui o ngā awa me ngā papa roto ehara tonu ko te whakamahi me te whakarerekē awa, papa roto hoki mea ake nei, me kī, ki te kore e waimeha ērā atu ūara o te awa, roto rānei.*  
[Maori translation required]

## **6.4 Policies**

### **6.4.1 Water ~~M~~management ~~f~~Framework ~~Zones and Values~~<sup>14</sup>**

#### **Policy 6-1: ~~Water m~~Management ~~f~~Framework ~~zones and values~~<sup>14</sup>**

~~For the purposes of managing water quality, water quantity, and activities in the beds of rivers and lakes, the rivers and lakes waterbodies in the Manawatu-Wanganui Region have been divided into the water management sub-zones shown in Schedule D. The rivers and lakes waterbodies shall be managed in a manner which recognises and provides for the values identified in Schedule D for~~

<sup>13</sup> Water officers report – recommendation WTR 19

<sup>14</sup> Water officers report – recommendation WTR 23



each water management sub-zone. The values and their associated purposes are set out in Table 6.2.

For the purpose of safeguarding the life-supporting capacity of water bodies<sup>Δ\*</sup> and to avoid, remedy or mitigate adverse effects<sup>Δ\*</sup> of activities on water<sup>Δ\*</sup> quality, water<sup>Δ\*</sup> quantity and the beds<sup>Δ\*</sup> of rivers<sup>Δ\*</sup> and lakes<sup>Δ\*</sup>, water bodies<sup>Δ\*</sup> in the Manawatu-Wanganui Region shall be managed in accordance with the following framework:

- (i) The Water Management Zones\* and Water Management Sub-zones\* and Groundwater Management Zones defined in Schedule Ba, Part Ba1 shall be used as the units for integrated management of water bodies<sup>Δ\*</sup>
- (ii) Water bodies<sup>Δ\*</sup> shall be managed in a manner that recognises and provides for the surface water<sup>Δ\*</sup> management values defined in Schedule Ba, Part Ba2;
- (iii) Surface water<sup>Δ\*</sup> quality shall be managed according to the standards set in Schedule D, which provide for the values defined for each Water Management Sub-zone\*;
- (iv) Surface water<sup>Δ\*</sup> allocation shall be managed according to the minimum flows and allocation limits set in Schedule B, Table B1, for each Water Management Sub-zone\* and groundwater shall be managed according to the allocation limits set in Schedule C for each Groundwater Management Zone<sup>14</sup>

**Table 6.2** Water Management Values and Purposes

| Value Group               | Individual values |  | Management Objective   |
|---------------------------|-------------------|--|--|
| Ecosystem                 | NS                | Natural State                            | The water_body <sup>Δ*</sup> is maintained in its natural state  |
|                           | LSC               | Life-supporting Capacity                 | The water_body <sup>Δ*</sup> supports healthy aquatic life/ecosystems  |
|                           | SOS-A             | Sites of Significance - Aquatic          | Sites of significance for native aquatic biodiversity are maintained or improved                               |
|                           | SOS-R             | Sites of Significance - Riparian         | Sites of significance for native riparian biodiversity are maintained or improved                              |
|                           | NFS IS            | Native Fish Inanga <sup>1</sup> Spawning | The water_body <sup>Δ*</sup> sustains healthy native fish inanga spawning and fry egg development <sup>1</sup> |
| Recreational and Cultural | CR                | Contact Recreation                       | The water_body <sup>Δ*</sup> is suitable for contact recreation  |
|                           | AM                | Amenity                                  | The amenity values of the water_body <sup>Δ*</sup> and its margins are maintained or improved                  |
|                           | NF_WM             | Native Fishery Whitebait migration       | The water_body <sup>Δ*</sup> sustains populations of native fish that can be harvested in a sustainable manner |
|                           | MAU               | Mauri*                                   | The mauri* of the water_body <sup>Δ*</sup> is maintained or improved   |
|                           | SG                | Shellfish Gathering                      | The waterbody <sup>Δ*</sup> is suitable for shellfish harvesting   |
|                           | SOS-C             | Sites of Significance - Cultural         | Sites of significance for cultural values are maintained   |
|                           | TF                | Trout Fishery                            | The water_body <sup>Δ*</sup> sustains healthy rainbow and/or brown trout fisheries                             |

| Value Group         | Individual values |  | Management Objective  |
|---------------------|-------------------|--|---|
|                     | TS                | Trout Spawning                                 | The <i>water_body</i> <sup>Δ*</sup> meets the requirements of rainbow and brown trout spawning and larval and fry development   |
|                     | AE                | Aesthetics                                     | The aesthetic values of the <i>water_body</i> <sup>Δ*</sup> and its margins are maintained or improved  |
| Water Use           | WS                | <i>Water</i> <sup>Δ</sup> Supply               | The <i>water_body</i> <sup>Δ*</sup> is suitable as a raw drinking <i>water</i> <sup>Δ</sup> source for human consumption  |
|                     | IA                | Industrial Abstraction                         | The <i>water_body</i> <sup>Δ*</sup> is suitable as a <i>water</i> <sup>Δ</sup> source for industrial abstraction  |
|                     | I                 | Irrigation                                     | The <i>water_body</i> <sup>Δ*</sup> is suitable as a <i>water</i> <sup>Δ</sup> source for irrigation  |
|                     | S                 | Stockwater                                     | The <i>water_body</i> <sup>Δ*</sup> is suitable as a supply of drinking <i>water</i> <sup>Δ</sup> for livestock   |
| Social/<br>Economic | CAP               | Capacity to Assimilate Pollution               | The capacity of a <i>water_body</i> <sup>Δ*</sup> to assimilate pollution <del>is not exceeded without compromising the ecosystem, recreational, cultural and <i>water</i><sup>Δ</sup> use values.</del> <sup>1</sup> |
|                     | FC                | Flood Control <u>and Drainage</u> <sup>1</sup> | The integrity of existing flood and riverbank erosion protection <i>structures</i> <sup>Δ</sup> is not compromised  |
|                     | <del>D</del>      | <del>Drainage</del>                            | <del>The integrity of existing drainage <i>structures</i><sup>Δ</sup> is not compromised</del>  |
|                     | EI                | Existing <i>Infrastructure</i> <sup>Δ</sup>    | The integrity of existing <i>infrastructure</i> <sup>Δ</sup> is not compromised   |

This policy relates to Issues 6-1, 6-2 and 6-3 and Objectives 6-1, 6-2 and 6-3.

## 6.4.2 Water Quality

### 6.4.2.1 Surface Water Quality

#### ~~Policy 6-2: Water quality standards~~

~~Water quality standards relating to the values described in Policy 6-1 have been developed for each water management zone\*, as shown in Schedule D. The water quality standards in Schedule D shall be used for the management of surface water quality in the manner set out in Policies 6-3, 6-4 and 6-5.~~<sup>14</sup>

#### **Policy 6-3: Ongoing compliance where *water*<sup>Δ</sup> quality standards are met**

- (a) In each case where the existing *water*<sup>Δ</sup> quality meets the relevant *water*<sup>Δ</sup> quality standard within a *W*-*water* *M*-*management* *S*-*ub*-*zone*<sup>1</sup>, as shown in Schedule ~~DBa~~, activities shall be managed in a manner which ensures that the *water*<sup>Δ</sup> quality standard continues to be met.
- (b) For the avoidance of doubt, ~~subsection~~ (a) applies:
  - (i) in circumstances where the existing water quality of a *W*-*water* *M*-*management* *S*-*ub*-*zone*<sup>\*</sup> meets all of the *water*<sup>Δ</sup> quality standards for the *S*-*ub*-*zone* (in which case ~~subsection~~ (a) applies to every *water*<sup>Δ</sup> quality standard for the *S*-*ub*-*zone*)<sup>1</sup>
  - (ii) in circumstances where the existing *water*<sup>Δ</sup> quality of a *W*-*water* *M*-*management* *S*-*ub*-*zone*<sup>\*</sup> meets some of the *water*<sup>Δ</sup> quality



standards for the Sub-zone\* (in which case subsection (a) applies only to those standards met).<sup>1</sup>

This policy relates to Issue 6-1 and Objective 6-2.

#### **Policy 6-4: Enhancement where water quality standards are not met**

- (a) In each case where the existing water quality does not meet the relevant water quality standard within a Wwater Mmanagement Sub-zone\*<sup>1</sup>, as shown in Schedule D, activities shall be managed in a manner which maintains or enhances existing<sup>15</sup> water quality in order to meet the water quality standard for the Wwater Mmanagement Sub-zones\*<sup>1</sup> shown in Schedule D.
- (b) For the avoidance of doubt, subsection (a) applies:
- (i) in circumstances where the existing water quality of a Wwater Mmanagement Sub-zone\* does not meet any of the water quality standards for the sub-zone (in which case subsection (a) applies to every water quality standard for the sub-zone)<sup>1</sup>
  - (ii) in circumstances where the existing water quality of a Wwater Mmanagement Sub-zone\* does not meet all of the water quality standards for the Sub-zone (in which case subsection (a) applies only to those standards not met).<sup>1</sup>

This policy relates to Issue 6-1 and Objective 6-2.

#### **Policy 6-5: Management of activities in areas where existing water quality is unknown**

- (a) In each case where there is insufficient data to enable a comparison of the existing water quality with the relevant water quality standard as shown in Schedule D, activities shall be managed in a manner which:
- (i) maintains or improves enhances<sup>16</sup> the existing water quality
  - (ii) has regard to the likely effect of the activity on the values identified for the relevant Wwater Mmanagement Sub-zone\*<sup>1</sup>
  - (iii) has regard to relevant information about the existing water quality in upstream or downstream Wwater Mmanagement Sub-zone\*, where such information exists.
- (b) For the avoidance of doubt, subsection (a) applies:
- (i) in circumstances where there is insufficient data to enable a comparison of the existing water quality with any of the water quality standards for a Wwater Mmanagement Sub-zone\* (in which case subsection (a) applies to every water quality standard for the sub-zone)<sup>1</sup>
  - (ii) in circumstances where there is insufficient data to enable a comparison of the existing water quality with all of the water quality standards for a Wwater Mmanagement Sub-zone\* (in which case subsection (a) applies only to those standards with insufficient data).

<sup>15</sup> Water officers report – recommendation WTR 266

<sup>16</sup> Water officers report – recommendation WTR 27

This policy relates to Issue 6-1 and Objective 6-2.

## 6.4.2.2 Groundwater Quality

### Policy 6-6: *Maintenance*<sup>\*</sup> of groundwater quality

- (a) *Discharges*<sup>^</sup> and *land-use* activities shall be managed in a manner which maintains ~~the existing~~ groundwater quality to preserve its existing values and potential for future uses and values
- (b) Groundwater takes in the vicinity of the coast shall be managed in a manner which avoids saltwater intrusion.
- (c) On-site wastewater systems shall be designed to minimise potential adverse effects<sup>^</sup> on the groundwater quality, particularly within areas with degraded groundwater quality.<sup>17</sup>

This policy relates to Issue 6-1 and Objective 6-2.

## 6.4.2.3 Discharges and *Land*<sup>^</sup> use Activities Affecting *Water*<sup>^</sup> Quality

### Policy 6-7: *Land*<sup>^</sup>-use activities affecting surface *water*<sup>^</sup> quality

- (a) **Nutrients**
  - (i) Intensive farming (dairy farming, intensive sheep and beef farming, commercial vegetable growing and cropping) *land*<sup>^</sup> use activities shall be regulated in targeted W~~w~~ater M~~m~~anagement S~~s~~ub-zones<sup>\*1</sup>.
  - (ii) For the purposes of ~~subsection~~ (a)(i), targeted W~~w~~ater M~~m~~anagement S~~s~~ub-zones<sup>\*</sup> shall be those sub-zones where, collectively, intensive farming ~~land~~<sup>^</sup>-use activities are the predominant cause of elevated nutrient levels in the Water Management Sub-zones<sup>\*1</sup>.
  - (iii) Those persons carrying out intensive farming ~~land~~<sup>^</sup> use and cropping activities in the W~~w~~ater M~~m~~anagement S~~s~~ub-zones<sup>\*1</sup> ~~targeted specified~~ in ~~subsection~~ (a)(i) shall be required, amongst other things, to prepare a nutrient management plan for the purposes of:
    - (1) establishing the measures required to achieve the target contaminant<sup>^</sup> loading rates for the relevant W~~w~~ater M~~m~~anagement S~~s~~ub-zones<sup>\*1</sup>, as specified in Schedule DBa D
    - (2) identifying best management practices to minimise nutrient leaching from farms
    - (3) establishing programmes for implementing any required changes-best management practices.
- (b) **Faecal contamination**
  - (i) Intensive farming ~~land~~<sup>^</sup>-use activities shall be regulated in targeted W~~w~~ater M~~m~~anagement S~~s~~ub-zones<sup>\*1</sup>.
  - (ii) For the purposes of ~~subsection~~ (b)(i), targeted W~~w~~ater M~~m~~anagement S~~s~~ub-zones<sup>\*</sup> shall be those Sub-zones where,

<sup>17</sup> Water officers report – recommendation WTR 28



collectively, intensive farming **land-use** activities are causing elevated faecal contamination levels.<sup>1</sup>

- (iii) Those persons carrying out intensive farming **land-use** activities in the **Wwater Mmanagement Sub-zones\*** targeted in **subsection (b)(i)** shall be required, amongst other things, to<sup>1</sup>
- (1) prevent stock access to **water\_bodies^\***
  - (2) mitigate **against the risk of** faecal contamination **of water** from other entry points (e.g. race run-off)
  - (3) establish programmes for implementing any required changes **to reduce faecal contamination of water^**.

(c) **Sediment**

- (i) In those **Wwater Mmanagement Sub-zones\*** where agricultural **land-use** activities are the predominant cause of elevated sediment levels, non-regulatory *Whole Farm Business Plans\** shall be prepared and implemented for the purpose of reducing soil erosion, as described in Chapter 5.<sup>1</sup>

This policy relates to Issue 6-1 and Objective 6-2.

**Policy 6-8: Point source **discharges^** to **land and water^****

- (a) The management of point source **discharges^** into **water^** shall recognise and provide for the strategies for surface **water^** quality management set out in Policies 6-3, 6-4 and 6-5 after *reasonable mixing\**, ~~while having regard to:-~~

This policy relates to Issue 6-1 and Objective 6-2.

- (i) ~~the degree to which the activity will adversely affect the values identified for the relevant **Wwater Mmanagement Sub-zone(s)^\***~~
  - (ii) ~~whether the **discharge^** in combination with other **discharges^** including non-point source discharges<sup>18</sup>, will cause the **water^** quality standards set in Schedule D to be breached~~
  - (iii) ~~the extent to which the activity is consistent with best management practices~~
  - (iv) ~~the need to allow reasonable time to achieve any required improvements.~~
- (b) ~~The Regional Council may make an exception to **subsection (a)** where:~~
- (i) ~~in the case of **discharges^**, the **discharge^** is of a temporary nature or is associated with necessary **maintenance^** work and the **discharge^** cannot practicably be avoided~~
  - (ii) ~~adverse **effects^** can be fully offset by way of a financial contribution in accordance with Chapter 18~~
  - (iii) ~~it is appropriate to adopt the **best practicable option^**~~
  - (iv) ~~other exceptional circumstances apply~~
- ~~and it is consistent with the purpose of the RMA to do so.<sup>19</sup>~~

<sup>18</sup> Water officers report – recommendation WTR 30

<sup>19</sup> Policy 6-8 has been incorporated in part to Chapter 13 to become Policy 13-5

**Policy 6-9: Point source discharges<sup>^</sup> to land<sup>^</sup>**

~~Discharges<sup>^</sup> of contaminants<sup>^</sup> onto or into land<sup>^</sup> shall be managed in a manner which:~~

- ~~(a) ensures that there is no significant degradation of the existing groundwater quality is maintained<sup>20</sup>~~
- ~~(b) does not result in pathogens or other toxic substances accumulating in soil or pasture to levels that would render the soil unsafe for agricultural or domestic use~~
- ~~(c) recognises and provides for the strategies for surface water<sup>^</sup> quality management set out in Policies 6-3, 6-4 and 6-5, as necessary~~
- ~~(d) maximises the reuse of nutrients and water<sup>^</sup> contained in the discharge<sup>^</sup> to the extent practicable~~
- ~~(e) ensures that adverse effects<sup>^</sup> on rare habitats<sup>^</sup>, threatened habitats<sup>^</sup> and at risk habitats<sup>^</sup> are avoided, remedied or mitigated.<sup>20 21</sup>~~

**Policy 6-10: Options for discharges<sup>^</sup> to surface water<sup>^</sup> and land<sup>^</sup><sup>22</sup>**

~~When applying for consents and making decisions on consent applications for discharges<sup>^</sup> of contaminants<sup>^</sup> to water<sup>^</sup> or land<sup>^</sup>, the opportunity to utilise alternative treatment and<sup>23</sup> discharge<sup>^</sup> options or a mix of discharge<sup>^</sup> regimes, for the purpose of avoiding or<sup>23</sup> mitigating adverse effects<sup>^</sup> where practicable<sup>23</sup>, shall be considered, including but not limited to:<sup>24</sup>~~

- ~~(a) discharging contaminants<sup>^</sup> onto land<sup>^</sup> in preference to rather than<sup>23</sup> discharging contaminants<sup>^</sup> into water<sup>^</sup>~~
- ~~(b) withholding from discharging contaminants<sup>^</sup> into surface water<sup>^</sup> at times of low flow~~
- ~~(c) adopting different treatment options for discharges<sup>^</sup> to different receiving environments<sup>^</sup> or at different times (including different flow regimes in surface water bodies<sup>^</sup>).<sup>25</sup>~~

**Policy 6-11: Human sewage discharges<sup>^</sup>**

~~Notwithstanding targets for water<sup>^</sup> quality and other policies in this chapter:~~

- ~~(a) all new discharges<sup>^</sup> of treated human sewage shall be applied onto land<sup>^</sup>, or flow overland, or pass through a rock filter or wetland<sup>^</sup> treatment system or alternative system that mitigates the effects<sup>^</sup> on the mauri\* of the receiving before entering a<sup>26</sup> surface water body<sup>^</sup>~~
- ~~(b) all existing direct discharges<sup>^</sup> of treated human sewage into a surface water body<sup>^</sup> shall change to a treatment system described under subsection (a) by the year 2020.<sup>27</sup>~~

<sup>20</sup> Water officers report – recommendation WTR 31

<sup>21</sup> Policy 6-9 has been incorporated in its entirety into Chapter 13 to become Policy 13-7

<sup>23</sup> Water officers report – recommendation WTR 32

<sup>24</sup> Policy 6-10 has been incorporated in part [the first paragraph] into Policy 13-6

<sup>25</sup> Policy 6-10 has been incorporated in part [Clauses a - c] into Policy 13-8

<sup>26</sup> Water officers report – recommendation WTR 33

<sup>27</sup> Policy 6-11 has been incorporated in its entirety into Chapter 13 to become Policy 13-9





### 6.4.3 Water Quantity and Allocation

#### 6.4.3.1 Policies applying to both Surface *Water* and Groundwater

##### Policy 6-12: Reasonable and justifiable need for *water*

The amount of *water* taken by resource users shall be reasonable, ~~and justifiable~~ for the intended use. The water must be used efficiently, and will be restricted during times of low flow where the water is surface water. Consideration must be given to reasonably available alternative water sources.

This policy relates to Issue 6-2 and Objective 6-3.

~~In addition, the following specific measures for ensuring reasonable and justifiable use of *water* shall be taken into account when considering consent applications to take *water* for irrigation, *public water supply* or industrial use, and during reviews of consent *conditions* for these activities.~~

- ~~(a) For irrigation, *resource consent* applications shall be required to meet a reasonable use test in relation to the maximum daily rate of abstraction, the irrigation return period and the seasonal or annual volume of the proposed take. When making decisions on the reasonableness of the rate and volume of take sought, the Regional Council will:~~
- ~~(i) consider *land* use, crop *water* use requirements, on-site physical factors such as soil water-holding capacity, and climatic factors such as rainfall variability and potential evapo-transpiration~~
  - ~~(ii) assess applications either on the basis of an irrigation application efficiency of 80% (even if the actual system being used has a lower application efficiency), or on the basis of a higher efficiency where an application is for an irrigation system with a higher efficiency~~
  - ~~(iii) link actual irrigation use to soil moisture measurements in consent *conditions*.~~
- ~~(b) For industrial uses, *water* allocation shall be calculated where possible in accordance with best management practices for *water* efficiency for that particular industry.~~
- ~~(c) For *public water supplies*, the following shall be considered to be reasonable:~~
- ~~(i) an allocation of 300 litres per person per day for domestic needs, plus~~
  - ~~(ii) an allocation for commercial use equal to 20% of the total allocation for domestic needs, plus~~
  - ~~(iii) an allocation for industrial use calculated, where possible, in accordance with best management practices for *water* efficiency for that particular industry, plus~~
  - ~~(iv) any allocation necessary to cater for the reasonable needs of livestock or agricultural practices that are connected to the *public water supply* system, plus~~
  - ~~(v) an allocation necessary to cater for growth, where urban growth of the municipality is zoned and is reasonably forecast, plus~~
  - ~~(vi) an allocation for leakage equal to 15% of the total of **subsections (i) to (v) above.**~~

~~Where the existing allocation for a *public water supply* exceeds the allocation calculated in accordance with **subsections (i) to (vi) above, the Regional Council will establish, in consultation with the relevant Territorial**~~



~~Authority, consideration will be given to a timeframe by which the existing allocation shall can<sup>28</sup> be reduced to the calculated amount.<sup>29</sup>~~

### **Policy 6-13: Efficient use of water<sup>^</sup>**

~~Water<sup>^</sup> shall be used efficiently<sup>30</sup>, including by the following measures:~~

- ~~(a) requiring water<sup>^</sup> audits and water<sup>^</sup> budgets to check for leakages and water<sup>^</sup> use efficiency~~
- ~~(b) requiring the use of, or progressive upgrade<sup>\*</sup> to, infrastructure<sup>\*</sup> for water<sup>^</sup> distribution that minimises use and loss of water<sup>^</sup> to the level set out in Policy 6-12<sup>31</sup>~~
- ~~(c) enabling the transfer of water permits<sup>^</sup>~~
- ~~(d) raising awareness about water<sup>^</sup> efficiency issues and techniques~~
- ~~(e) undertaking water<sup>^</sup> use monitoring, including by<sup>34</sup> installing water<sup>^</sup> metering and telemetry to monitor water<sup>^</sup> use.<sup>28 32</sup>~~

### **Policy 6-14: Consideration of alternative water<sup>^</sup> sources**

~~When making decisions on consent applications to take surface water<sup>^</sup>, the opportunity to utilise alternative sources such as groundwater or water<sup>^</sup> storage, including harvesting during periods of high flow in a water body<sup>^</sup>,<sup>33</sup> shall be considered.<sup>34</sup>~~

## 6.4.3.2

### **Policies for Surface Water<sup>^</sup>**

#### **Policy 6-15: Overall approach for surface water<sup>^</sup> allocation**

- (a) The requirements of ~~W~~water ~~C~~conservation ~~O~~orders<sup>^</sup> shall ~~must~~ be given effect ~~to under this Plan.~~
- (b) ~~The provisions of this plan will not be inconsistent with the intent of local water conservation notices.<sup>35</sup>~~
- (c) Core allocations of surface water<sup>^</sup> from rivers<sup>^</sup> shall ~~must~~ be determined in accordance with Policies 6-16 and 6-17. Takes that comply with the relevant core allocation, when assessed in combination with all other takes, shall ~~must~~ be allowed.
- (d) Supplementary allocations (~~being allocations in excess of core allocations~~) of surface water<sup>^</sup> from rivers<sup>^</sup> shall ~~must~~ be determined in accordance with Policy 6-18.
- (e) Takes from rivers<sup>^</sup> shall be apportioned, restricted or suspended in times of low flows in accordance with the provisions of Policy ~~6-19~~ 15-11.
- (f) Takes of water<sup>^</sup> from lakes<sup>^</sup> shall comply with Policy ~~6-20~~ 15-12.

<sup>28</sup> Water officers report – recommendation WTR 34

<sup>29</sup> Policy 6-12 has been incorporated in part into Chapter 15 to become Policy 15-7

<sup>30</sup> Policy 6-13 has been incorporated in part into Policy 6-12

<sup>31</sup> Water officers report – recommendation WTR 35

<sup>32</sup> Policy 6-13 has been incorporated in part into Chapter 15 to become Policy 15-8

<sup>33</sup> Water officers report – recommendation WTR 36

<sup>34</sup> Policy 6-14 has been incorporated in its entirety into Chapter 15 to become Policy 15-9

<sup>35</sup> Water officers report – recommendation WTR 37



This policy relates to Issue 6-2 and Objective 6-3.

### **Policy 6-16: Core water<sup>^</sup> allocation and minimum flows**

- (a) The taking of surface water<sup>^</sup> ~~shall~~ **must** be managed in accordance with the minimum flows and core allocations set out for each ~~W~~water ~~Management~~ Sub-zone<sup>\*1</sup> in Schedule B.
- (b) The minimum flows and core allocations set out in Schedule B ~~shall be assessed after~~ **exclude, and will continue to exclude** any takes **for hydro electricity lawfully established at the time the Plan becomes operative<sup>^</sup> was notified for hydroelectricity generation have been taken.** ~~The only exception to this will be the hydro electricity takes from Zone Whau\_3c.~~<sup>36</sup>

This policy relates to Issue 6-2 and Objective 6-3.

### **Policy 6-17: Approach to setting minimum flows and core allocations**

- (a) Where good hydrological information, such as a specific water<sup>^</sup> resource study or a long-term flow record, is available it shall be used to set minimum flows and core allocations in Schedule B.
- (b) Where information described in (a) above is not available, the minimum flows and core allocations set out in Schedule B shall generally be a minimum flow equal to the estimated or calculated one-day mean annual low flow, and a core allocation equal to a percentage of the minimum as specified in Schedule B.

This policy relates to Issue 6-2 and Objective 6-3.

### **Policy 6-18: Supplementary water<sup>^</sup> allocation<sup>37</sup>**

~~In addition to the core allocations set out in Policy 6-16, a supplementary allocation from rivers<sup>^</sup> may be provided:~~

- ~~(a) in circumstances where water<sup>^</sup> is only taken when the river<sup>^</sup> flow is greater than the median flow, and the total amount of water<sup>^</sup> taken by way of a supplementary allocation does not exceed 10% of the natural flow in the river<sup>^</sup> at the time of abstraction, ~~or~~<sup>36</sup>~~
- ~~(b) in circumstances where it can be shown that the supplementary allocation will not:~~
  - ~~(i) increase the frequency or duration of low flows ~~or lead to a significant departure from the natural flow regime, including frequency of flushing flows.~~<sup>38</sup>~~
  - ~~(ii) cause any adverse effects<sup>^</sup> on the values of the water body<sup>^</sup> as set out in Schedule ~~DBa~~~~
  - ~~(iii) limit the ability of anyone to take water<sup>^</sup> under a core allocation.~~

<sup>36</sup> Water officers report – recommendation WTR 38

<sup>37</sup> Policy 6-18 has been incorporated in its entirety into Chapter 15 to become Policy 15-10

<sup>38</sup> Water officers report – recommendation WTR 40



## Policy 6-19: Apportioning, restricting and suspending takes in times of low flow<sup>39</sup>

During times of low flow, takes from *rivers* shall be managed in the following manner:

- (a) **Permitted takes** — Takes that are permitted by this Plan (surface *water* and groundwater takes) or are for fire-fighting purposes shall be allowed to continue regardless of *river* flow.
- (b) **Essential takes** — The following core *water* allocation takes shall be deemed essential and shall be managed in the manner described:
- (i) ~~(iv)~~ takes greater than permitted by this Plan (and therefore subject to *resource consent*) that are required to meet an individual's reasonable domestic needs or the reasonable needs of an individual's animals for drinking water shall be allowed to continue regardless of *river* flow. Reasonable needs shall be calculated as follows:
- a. up to 250 litres per person per day for domestic needs
- b. up to 70 litres per animal per day for stock drinking *water*<sup>40</sup>
- (ii) ~~(v)~~ takes required to meet the reasonable needs of hospitals, other facilities providing medical treatment, marae, schools or other education facilities, *defence facilities*<sup>40</sup> or correction facilities shall be allowed to continue regardless of *river* flow
- (iii) ~~(vi)~~ takes which were lawfully established at the time of this Plan becoming *operative* which are<sup>40</sup> required for the *operation* of industries which, if their take were to cease, would significantly compromise a community's ability to provide for its social, economic or cultural well being or for its health or safety, shall be allowed to continue regardless of *river* flow, but shall be required to minimise the amount of *water* taken to the extent reasonable
- (iv) ~~(vii)~~ *public water supply*\* takes shall be restricted to a total public *water* consumption calculated as follows:
- (A) an allocation of 250 litres per person per day for domestic needs, plus
- (B) an allocation for commercial use equal to 20% of the total allocation for domestic needs, plus
- (C) an allocation which meets the reasonable needs of those facilities and industries listed under subsections (b)(ii) and (b)(iii) where such facilities and industries are connected to the *public water supply*\* system, plus
- (D) any allocation necessary to cater for the reasonable needs of livestock that are connected to the *public water supply*\* system, plus
- (E) an allocation for leakage equal to 15% of the total of subsections (A) to (D) above.
- (c) **Non-essential takes** — Other core *water* allocation takes, including irrigation takes but excluding the essential takes described under subsection (b), shall be managed in the following manner:
- (i) *water* takes shall be required to cease when the *river* drops *is at or below*<sup>40</sup> its minimum flow, as set out in Policy 6-16
- (ii) *water* takes shall be allowed to recommence once the *river* flow has risen above its minimum flow.
- (d) **Meaning of 'core *water* allocation take'** — For the purposes of this policy, a core *water* allocation take means a take that has been granted

<sup>39</sup> Policy 6-19 has been incorporated in its entirety into Chapter 15 to become Policy 15-11

<sup>40</sup> Water officers report – recommendation WTR 41



consent in accordance with a core water<sup>^</sup> allocation made under Policy 6-16, or in accordance with a previous core water<sup>^</sup> allocation regime.

### **Policy 6-20: Surface water<sup>^</sup> allocation – lakes<sup>^</sup>**<sup>41</sup>

Decisions on resource consent<sup>^</sup> applications to take water<sup>^</sup> from a lake<sup>^</sup> shall ensure that there are no significant adverse effects<sup>^</sup> on the values of the lake<sup>^</sup>, as shown in Schedule DBa.

#### 6.4.3.3

### **Policies for Bores\* and Groundwater**

#### **Policy 6-21: Overall approach for bore\* management and groundwater allocation**

- (a) New bores\* shall **must** be constructed and managed in accordance with Policy ~~6-22~~ 15-13.

(aa) Groundwater Management Zones are mapped in Schedule C

- (b) Total groundwater allocations shall **must** comply with the annual allocable volumes for Ggroundwater Mmanagement Zones set out in Policy 6-23.
- (c) The measured and/or modelled effects<sup>^</sup> of a proposed groundwater take on other groundwater users, surface water\_bodies<sup>^\*</sup> and saltseawater<sup>42</sup> intrusion shall **must** be managed in accordance with Policies ~~6-24, 6-25 and 6-26~~ 15-15, 15-16 and 15-17.

This policy relates to Issues 6-1 and 6-2 and Objectives 6-2 and 6-3.

#### **Policy 6-22: Bore\* construction development and management**<sup>43</sup>

- ~~(a) New bBores\* shall be sited to ensure adequate separation from existing bores\*, and to avoid an over-concentration of bores\* in a particular area, wherever practicable, so as to avoid or mitigate effects<sup>^</sup> on the reliability of supply of properly constructed existing bores\*. A bore\* that is constructed in general accordance with (a)-(d) of this Policy, and is recorded on Horizons' groundwater database, shall be considered to be a properly constructed bore\*.~~<sup>44</sup>
- ~~(b) New bBores\*<sup>44</sup> shall generally be constructed, and bore\* logs and other records prepared, in accordance with the NZS 4411:2001 Environmental Standard for Drilling of Soil and Rock.~~
- ~~(c) New bBores\*<sup>44</sup> shall be designed to ensure a high degree of efficiency with respect to bore\* development, bore\* depth and diameter, and screen depth and length. A high degree of efficiency is achieved where:~~
- ~~(i) the bore\* adequately penetrates the aquifer from which water<sup>^</sup> is being drawn at a depth sufficient to enable water<sup>^</sup> to be drawn all year (i.e. the bore\* depth allows for the placement of a pump below the depth of seasonally low groundwater levels with sufficient allowance for drawdown requirements);~~
  - ~~(ii) the bore\* is adequately maintained;~~
  - ~~(iii) the bore\* is of sufficient diameter and the bore\* has a pump capable of drawing water<sup>^</sup> to the land<sup>^</sup> surface.~~

<sup>41</sup> Policy 6-20 has been incorporated in its entirety into Chapter 15 to become Policy 15-12

<sup>42</sup> Water officers report – recommendation WTR 48

<sup>43</sup> Policy 6-22 has been incorporated in its entirety into Chapter 15 to become Policy 15-13

<sup>44</sup> Water officers report – recommendation WTR 44



~~Measurement of the yield and drawdown characteristics of a bore\* should be used to indicate its efficiency.<sup>44</sup>~~

- (d) ~~New bores\*<sup>44</sup> shall be sited, constructed and used in a manner that prevents:~~
- ~~(i) contaminants<sup>Δ</sup> from entering the bore\* from the land<sup>Δ</sup> surface~~
  - ~~(ii) the wastage of water<sup>Δ</sup> in artesian conditions<sup>Δ</sup>.~~
- (e) ~~Bores\* that are no longer required shall be decommissioned in general accordance with the NZS 4411:2001 Environmental Standard for Drilling of Soil and Rock.~~

### **Policy 6-23: Groundwater Management Zones<sup>45</sup>**

~~The total amount annual allocated volume<sup>46</sup> of groundwater taken from each Groundwater Management Zone\* mapped in Schedule CBa<sup>1</sup> shall not exceed comply with<sup>46</sup> the annual allocable volume specified in Schedule CBa.<sup>1</sup>~~

### **Policy 6-24: Effects of groundwater takes on other groundwater takes<sup>47</sup>**

- (a) ~~Consent applicants wishing applications<sup>48</sup> to take groundwater shall be required to include generally be required to undertake<sup>48</sup> pumping tests and hydrogeological assessments in order to determine the likely<sup>48</sup> impact on existing groundwater takes in the vicinity.~~
- (b) ~~Consent conditions<sup>Δ</sup> restricting the rate and/or duration of pumping shall be imposed on new takes of groundwater where this is necessary to avoid significant drawdown impacts on existing groundwater takes from good quality bores\* in the vicinity. A groundwater take is considered to be from a good quality bore\* in circumstances where the bore\* penetrates the aquifer from which water is being drawn at a depth sufficient to enable water to be drawn all year (ie., the bore\* depth is below the range of seasonal fluctuations in groundwater level), the bore\* is adequately maintained, the bore\* is of sufficient diameter and is screened to reasonably minimise drawdown, and the bore\* has a pump capable of drawing water from its base to the land surface. Significant drawdown impact occurs where drawdown of more than 0.5 m within a 100-day period that, in combination with drawdown effects<sup>Δ</sup> greater than 0.5 m within a 100-day period from all other abstractions, would cause a more than minor reduction in the reliability of supply from any existing lawful groundwater take from a properly constructed bore\* in the vicinity of the proposed take. A properly constructed in the vicinity bore\* is a bore\* constructed in accordance with policy 6-22 which is within 3 km and in the same Groundwater Management Zone.<sup>48</sup>~~
- (c) ~~Consent conditions<sup>Δ</sup> specifying short-term restrictions on the rate and/or duration of pumping may also be imposed on new takes of groundwater where this is necessary to avoid significant drawdown impacts that cause a more than minor reduction in the reliability of supply of on existing bores\* that are not of a good quality properly constructed in accordance with Policy 6-22<sup>48</sup>, in order to allow sufficient time for such bores\* to be upgraded\* or replaced.~~

<sup>45</sup> Policy 6-23 has been incorporated in its entirety into Chapter 15 to become Policy 15-14

<sup>46</sup> Water officers report – recommendation WTR 45

<sup>47</sup> Policy 6-24 has been incorporated in its entirety into Chapter 15 to become Policy 15-15

<sup>48</sup> Water officers report – recommendation WTR 46



- (d) — The Regional Council may encourage consent *applicants* to consider the option of providing *water* to neighbouring properties in circumstances where this would be more practical than meeting the requirements of subsections (b) or (c).

**Policy 6-25: Effects of groundwater takes on surface *water bodies***<sup>49</sup>

The effects of groundwater takes on surface *water bodies*, including *wetlands*, shall be managed in the following manner:

- (a) — An appropriate scientific method shall be used to calculate the likely degree of connection between the groundwater and surface water at the location of the groundwater take.
- (b) — To the extent justified by the calculation under subsection (a), the groundwater take shall be assessed and managed as if it were a surface take from the water management zone(s) to which it is connected.
- (a) — The *effects* of a groundwater abstraction on surface *water* shall be assessed according to the *Guidelines for the Assessment of Groundwater Abstraction Effects on Stream Flow* prepared by Pattle Delamore Partners Ltd and Environment Canterbury (Environment Canterbury Report R00/11, ISBN 1-86937-387-1, First Edition, June 2000).
- (b) — Consent applications for new groundwater abstractions, lodged after the date that this Policy becomes *operative*, shall have their surface *water* depletion *effects* classified and managed as per Table 6.2a:<sup>50</sup>

Table 6.2a — Surface *water* depletion<sup>51</sup>

| <b>Classification of Surface <i>Water</i> Depletion Effect</b> | <b>Magnitude of Surface <i>Water</i> Depletion Effect</b>  | <b>Management Approach</b>  |
|--|--|---|
| Riparian   | Any groundwater abstraction located within the geologically recent river <i>bed</i> strata of a surface <i>water body</i> .  | The groundwater abstraction is subject to the same restrictions as a surface <i>water</i> abstraction, unless there is clear hydro-geologic evidence that demonstrates that the <i>effect</i> of pumping will not impact on the surface <i>water body</i> . |
| High   | Calculated as greater than or equal to 90% of the groundwater pumping rate after seven days of pumping, or greater than or equal to 50% of the average groundwater pumping rate after 100 days of pumping. | The groundwater abstraction is subject to the same minimum flows and allocation limits as in Schedule B.  |
| Medium   | The surface <i>water</i> depletion <i>effect</i> is calculated as less than 50% and greater than or equal to 20% of the groundwater pumping rate after 100 days of pumping.                                | The calculated loss of surface <i>water</i> is included in the surface <i>water</i> allocation regime, but no minimum flow conditions are imposed on the groundwater abstraction.   |
| Low or Negligible  | The surface <i>water</i> depletion <i>effect</i> is calculated as less 20% of  | No surface <i>water</i> management <i>rules</i> required  |

<sup>49</sup> Policy 6-25 has been incorporated in its entirety into Chapter 15 to become Policy 15-16

<sup>50</sup> Water officers report – recommendation WTR 47

<sup>51</sup> Table 6-2a has been incorporated in its entirety into Chapter 15 to become Table 15-1



|  |  |  |
|--|--|--|
|  | <del>the groundwater pumping rate after 100 days of pumping.</del> | <del>because the effect<sup>52</sup> is small and delayed.</del> |
|--|--|--|

### **Policy 6-26: ~~Saltwater Seawater~~<sup>52</sup> intrusion<sup>53</sup>**

~~SaltSea~~water intrusion along the coastal margins of the Region arising from groundwater takes shall be managed by the following measures:

- (a) ~~Consent applicants<sup>52</sup> wishing to take groundwater within 5 km of the coastal mean high water<sup>52</sup> spring line shall be required to carry out pumping tests and hydrogeological assessments in order to determine the level of drawdown at the coast and the likelihood of inducing salt contribution of that drawdown to increasing the risk of sea~~water intrusion.<sup>52</sup>
- (b) ~~In cases where saltwater intrusion might occur, t~~The consent application may be declined or the amount of water<sup>52</sup> that can be taken shall be limited to an amount that ~~restricts lessens~~ the likelihood risk of salt seawater intrusion.<sup>52</sup>
- (c) ~~In addition, consents to take groundwater within 5 km of the coast shall contain conditions<sup>52</sup> relating to the monitoring of groundwater levels and electrical conductivity, and the restriction or suspension of takes if specified electrical conductivity thresholds are reached or exceeded. These monitoring requirements and electrical conductivity thresholds will be determined on a case by case basis.~~
- (d) ~~Wherever possible, groundwater abstractions shall be managed to avoid critical pumping rates that could draw seawater towards the pumping bore\*. Groundwater pressures along the coastal margin should be maintained above mean sea level by an amount that is one fortieth (1/40) of the depth of the base of the aquifer system. This is defined in metres below mean sea level.~~<sup>52</sup>

#### 6.4.4

### **River<sup>^</sup> and Lake<sup>^</sup> Beds<sup>^</sup>**

#### **Policy 6-27: General management of river<sup>^</sup> and lake<sup>^</sup> beds<sup>^</sup>**

Activities in, on, under or over the beds<sup>^</sup> of river<sup>^</sup> and lake<sup>^</sup> shall generally be managed in a manner which:

- (a) recognises and provides for the values identified in Schedule D Ba<sup>1</sup> for the W<sup>^</sup>ater M<sup>^</sup>anagement Sub-zone(s)<sup>\*1</sup> in which the activity takes place, in the manner described in Policies ~~6-28, 6-29 and 6-30~~ 16-4, 16-5 and 16-6
- (b) ~~avoids or mitigates the risk of flood hazards arising from<sup>54</sup> any significant reduction in ability of a river<sup>^</sup> to convey flood flows, or significant impedance to the passage of floating debris~~
- (c) ~~avoids or mitigates<sup>54</sup> any significant adverse effects<sup>^</sup> on the stability and function of existing structures<sup>^</sup> including flood and erosion control structures<sup>^</sup>~~
- (d) avoids any significant reduction in the habitat diversity, including the morphological diversity, of the water body<sup>^\*</sup> and its bed<sup>^</sup><sup>54</sup>

This policy relates to Issue 6-3 and Objectives 6-1 and 6-4.

<sup>52</sup> Water officers report – recommendation WTR 48

<sup>53</sup> Policy 6-26 has been incorporated in its entirety into Chapter 15 to become Policy 15-X

<sup>54</sup> Water officers report – recommendation WTR 50





- (e) manages ~~effects~~ on natural character and public access in accordance with the relevant policies in Chapter 7
- (f) provides for the safe passage of fish both upstream and downstream
- (g) ensures that the existing nature and extent of navigation of the ~~water body~~ are not obstructed
- (h) ensures that access required for the ~~maintenance~~, ~~upgrade~~ and ~~operation~~ of ~~essential works and services infrastructure~~<sup>54</sup> is not obstructed.

**Policy 6-28: Activities in ~~water bodies~~ with a Value of Natural State, Sites of Significance – Cultural, or Sites of Significance – Aquatic**

In those ~~W~~water ~~M~~management ~~Sub~~ zones<sup>\*1</sup> with a Value of Natural State, Sites of Significance – Cultural, or Sites of Significance – Aquatic, as shown in Schedule ~~D Ba~~<sup>1</sup>, activities in, on, under or over the ~~beds~~ of ~~rivers~~ and ~~lakes~~ shall be managed in a manner which:

- (a) avoids ~~or mitigates~~<sup>55</sup> adverse ~~effects~~ on these values
- (b) maintains the habitat and spawning requirements of the species identified in Schedule ~~D Ba~~<sup>1</sup> as being significant within the subject ~~W~~water ~~M~~management ~~Sub~~ zones<sup>\*1</sup>.

**Policy 6-29: Activities in ~~water bodies~~ within ~~valued for a Flood Control or Drainage scheme~~<sup>56</sup>**

In those ~~W~~water ~~M~~management ~~Sub~~ zones<sup>\*1</sup> within a ~~water body~~ valued for ~~Flood Control or Drainage scheme~~<sup>56</sup> as shown in Schedule ~~I Ba20~~<sup>1</sup>, activities in, on, under or over the ~~beds~~ of ~~rivers~~ and ~~lakes~~ shall be managed in a manner which:

- (a) enables the level of flood hazard and erosion control existing at the time of notification of this Plan to be maintained within ~~river~~ and drainage schemes
- (b) maintains other values associated with the ~~water body~~, unless functional constraints make this impractical, in which case adverse ~~effects~~ on other values shall be mitigated ~~or and may be~~<sup>56</sup> offset or compensated by way of a financial contribution in accordance with the policies in Chapter 18.

**Policy 6-30: Activities in ~~water bodies~~ with other values**

In those ~~W~~water ~~M~~management ~~Sub~~ zones<sup>\*1</sup> not valued for Natural State, Sites of Significance – Cultural, Sites of Significance – Aquatic, or ~~within a Flood Control or Drainage scheme as shown in Schedule I~~<sup>57</sup>, activities in, on, under or over the ~~beds~~ of ~~rivers~~ and ~~lakes~~ shall be managed in a manner which:

- (a) avoids, remedies or mitigates significant adverse ~~effects~~ on these other values, ~~or (b) provides consent applicants with the option of making a financial contribution may be considered in order~~<sup>57</sup> to offset or compensate for adverse ~~effects~~ in accordance with the policies in Chapter 18.

<sup>55</sup> Water officers report – recommendation WTR 51

<sup>56</sup> Water officers report – recommendation WTR 52

<sup>57</sup> Water officers report – recommendation WTR 53

### Policy 6-31: ~~Essential Existing~~<sup>58</sup> and beneficial activities

Notwithstanding Policies 6-27 to 6-30, activities in, on, under or over the ~~beds~~<sup>Δ</sup> of ~~rivers~~<sup>Δ</sup> and ~~lakes~~<sup>Δ</sup> that are ~~essential existing~~<sup>58</sup> or result in an environmental benefit shall generally be allowed, including:

- ~~(a) the use and maintenance\* of existing structures~~<sup>Δ</sup>, including works designed to maintain or improve the stability and functionality of existing ~~structures~~<sup>Δ</sup>
- ~~(b) the removal of derelict, unlawful or non-functional structures~~<sup>Δ</sup>
- ~~(c) the restoration or enhancement of natural habitats.~~

### Policy 6-32: Gravel extraction

- ~~(a) The annual volume of gravel available for extraction from these rivers~~<sup>Δ</sup> and reaches with certain allocations, listed in Table 6.3, shall be limited to the quantities stated in the table.
- ~~(b) The annual volume of gravel available for extraction from these rivers~~<sup>Δ</sup> and reaches with estimated allocations, listed in Table 6.4, shall generally be limited to the quantities stated in the table, unless better information is available there is a demonstrable river<sup>Δ</sup> management need to exceed this volume or where the extraction is necessary to decrease the risk of flooding or damage to structures.
- ~~(c) In other rivers or reaches, where there is no annual extraction limit, gravel extraction shall not exceed the natural rate of replenishment except where extraction is necessary to decrease the risk of flooding or damage to structures~~<sup>Δ</sup>.

~~Table 6.3 Annual allocable volumes of gravel – certain allocations~~<sup>59 – 60</sup>

| River or Reach   | Volume (m <sup>3</sup> ) |
|--|--------------------------|
| Lower Manawatu River   |                          |
| • <del>Manawatu Gorge to Karere Rd</del>   | 10,000                   |
| • <del>Karere Rd to Hamiltons Line</del>   | 10,000                   |
| • <del>Hamiltons Line to Oroua confluence (Yrs 2007-2009)</del>                            | 200,000                  |
| • <del>Hamiltons Line to Oroua confluence (Yrs 2009 onwards)</del>                         | 20,000                   |
| Oroua River upstream of <del>Boness Rd</del>   | 5,000                    |
| Oroua River downstream of <del>Boness Rd</del>   | 50,000                   |
| Makino <del>from confluence with Oroua River to the bend 800m upstream of Reids Line</del> | 3,000                    |
| Mangahao River <del>confluence to Tararua Rd bridge</del>                                  | 10,000                   |
| Mangatainoka River   | 55,000                   |
| South East Ruahine Streams   |                          |
| • <del>Mangapapa</del>   | 2,000                    |
| • <del>Mangaatua</del>   | 5,000                    |
| • <del>Raparapawai</del>   | 15,000                   |
| • <del>Oruakeretaki</del>  | 15,000                   |
| • <del>Otmarahu</del>  | 1,000                    |

<sup>58</sup> Water officers report – recommendation WTR 54

<sup>59</sup> Water officers report – recommendation WTR 57 and WTR 58

<sup>60</sup> Black strikethrough indicates content has moved to Table 6.4; Green strikethrough indicates it has been deleted



| River or Reach  | Volume (m <sup>3</sup> ) |
|---|--------------------------|
| • Kumeti  | 3,000                    |
| • Otamaraho   | 2,000                    |
| • Rokaiwhana  | <del>15,000</del>        |
| • Tamaki  | <del>30,000</del>        |
| • Mangatewaiiti   | 2,000                    |
| • Mangatewainui   | <del>6,000</del>         |
| • Mangatera   | 500                      |
| Upper Manawatu River  |                          |
| • From 1km upstream of Ngawapurua bridge to source          | 20,000                   |
| • 1 km upstream to 2.5 km downstream of Ngawapurua bridge   | no extraction            |
| • 2.5 km downstream of Ngawapurua Bridge to Ballance bridge | 15,000                   |

**Table 6.4** ~~Average Annual allocable volumes of gravel~~ ~~estimated allocations~~<sup>61</sup>

| River or Reach  | Volume (m <sup>3</sup> )             |
|---|--------------------------------------|
| Kawhatau River  | 35,000                               |
| <u>Makino Stream</u>  | <u>3,000</u>                         |
| Makuriiti Stream  | <del>6,000</del><br><del>3,000</del> |
| Manawatu River  |                                      |
| • <u>From 1 km upstream of Ngawapurua Bridge to source</u>  | <u>20,000</u>                        |
| • <u>1 km upstream to 2.5 km downstream of Ngawapurua Bridge</u>  | <u>No extraction</u>                 |
| • <u>2.5 km downstream of Ngawapurua Bridge to Ballance Bridge</u>  | <u>15,000</u>                        |
| • <u>Manawatu Gorge to Karere Rd</u>  | <u>50,000</u>                        |
| • <u>Karere Rd to Hamilton's Line</u>   | <u>300,000</u>                       |
| • <u>Hamilton's Line to Oroua confluence [2007 to 2009]</u>   | <u>20,000</u>                        |
| • <u>Hamilton's Line to Oroua confluence [2009 onwards] the 2 km aggrading reach between 39 Miles (S24 212 832) and Benchmark 643 (S24 226 830)</u> | <u>350,000</u>                       |
| • <u>Hamilton's Line to Oroua confluence [2009 onwards] the 2 km aggrading reach between BM 604 (S24 206 833) and BM 622 (S24 207 826)</u>          | <u>700,000</u>                       |
| <u>Mangahao River</u>   | <u>15,000</u>                        |
| Mangatainoka River  | 55,000                               |
| Ohau River  |                                      |
| • <u>Upstream of a point 1 km above SH 1 bridge</u>   | <u>2,000</u><br><u>5,000</u>         |
| • <u>Downstream of a point 1 km above SH 1 bridge</u>   | 10,000                               |
| Oroua River   |                                      |
| • <u>Upstream of Menzies Ford</u>   | <u>10,000</u>                        |
| • <u>Downstream of Menzies Ford</u>   | <u>55,000</u>                        |

<sup>61</sup> Black underline indicates content has moved from Table 6.3 to Table 6.4; Green strikeout indicates deletion from Table 6.4; Green underline indicates new wording



| River or Reach   | Volume (m <sup>3</sup> )    |
|--|-----------------------------|
| Pohangina River  | 30,000<br><del>25,000</del> |
| Rangitikei River   |                             |
| • <del>Makahikatoa Stream to Mangarere Road bridge</del> | 15,000                      |
| • <del>Mangarere Road bridge to Rewa</del>               | 25,000                      |
| • <del>Rewa to 7 km downstream of SH 1 bridge</del>      | 40,000<br><del>50,000</del> |
| • <del>7 km downstream of SH 1 bridge to mouth</del>     | 100,000                     |
| <u>South East Ruahine Streams</u>                        |                             |
| • <del>Kumeti</del>                                      | <del>3,000</del>            |
| • <del>Mangaatua</del>                                   | 5,000                       |
| • <del>Mangapapa</del>                                   | 2,000                       |
| • <del>Mangatera</del>                                   | 500                         |
| • <del>Mangatewaiiti</del>                               | 2,000                       |
| • <del>Mangatewainui</del>                               | 4,000                       |
| • <del>Oruakeretaki</del>                                | 5,000                       |
| • <del>Otamaraha</del>                                   | 2,000                       |
| • <del>Otamarahu</del>                                   | 1,000                       |
| • <del>Rokaiwhana</del>                                  | 10,000                      |
| • <del>Raparapawai</del>                                 | 3,000                       |
| • <del>Tamaki</del>                                      | 20,000                      |
| Turakina River   | 3,000                       |
| Whangaehu River  | 8,000                       |
| Whanganui River  | 7,000                       |
| • <del>Whakapapa Island to Pipiriki</del>                | 4,000                       |
| • <del>Pipiriki to mouth</del>                           | 2,750                       |

## 6.5

### Methods

~~The taking of surface water<sup>Δ</sup> and groundwater, discharging to surface water<sup>Δ</sup> and to land<sup>Δ</sup>, and the undertaking of activities that disturb the beds<sup>Δ</sup> of rivers<sup>Δ</sup> or lakes<sup>Δ</sup>, are largely regulatory activities. Part II: Regional Plan contains rules<sup>Δ</sup> relating to the activities described in this chapter.~~

The primary method for performing regional Council's statutory function and to implement this Plans objectives and policies is the use of rules to control:

- (a) The taking of surface water and ground water
- (b) Discharges to surface water and land
- (c) Disturbances of beds of rivers and lakes

Additional non regulatory methods are set out below.



| Project Name Method 6-1 <sup>3</sup> | Large Water Abstractors   |
|--------------------------------------|---|
| Project <sup>3</sup> Description     | <p>The aim of this <a href="#">project method</a> is to provide assistance to large water abstractors to identify options for improving the <i>water</i>^ abstraction, distribution and use components of their operations. It is expected this <a href="#">project method</a> will reduce the abstraction pressure on the groundwater and surface water resources, while providing abstractors with financial benefits and their business/customers with greater certainty of supply.</p> <p>The emphasis will be on working with large abstractors to identify and implement opportunities for increasing <i>water</i>^ use efficiency, reducing distribution network leakages, agreeing priority of use within distribution networks, and consideration of alternative <i>water</i>^ supply and storage options.</p> |
| Who                                  | <a href="#">Horizons</a> The Regional Council, <a href="#">Territorial Authorities</a> ^ District Councils, industry and large irrigators will work together to develop, fund and implement this programme.   |
| Links to Policy                      | This <a href="#">project method</a> <a href="#">links to implements</a> Policy <del>ies</del> 6-12, <del>6-13 and 6-14</del> .  |
| Target                               | All major abstractors in the Region have been contacted and assistance provided where requested by 2016.  |

| Project Name Method 6-2 <sup>3</sup> | Sewage Treatment Plant Upgrades <sup>*</sup>  |
|--------------------------------------|---|
| Project <sup>3</sup> Description     | <p>The aim of this <a href="#">project method</a> is to <a href="#">work with assist</a> <a href="#">Territorial Authorities</a>^ to seek central Government funding for sewage treatment plant <i>upgrades</i>^, given that <a href="#">the plants make they are</a> a significant <a href="#">contributor of contribution to contaminants</a>^ to <a href="#">waterways bodies</a>^* during low flows. <a href="#">Horizons</a> The Regional Council will work with <a href="#">Territorial Authorities</a>^ to analyse their treatment and disposal options and to develop a package to present to Government with the aim of securing capital works funding to reduce the environmental impact of these <i>discharges</i>^.</p> <p><del>An Ongoing project. Horizons The Regional Council extended an invitation to all Territorial Authorities^ to actively engage with the Regional Council as part of this project method in 2006.</del></p> |
| Who                                  | <del>Horizons</del> Regional Council, <a href="#">Territorial Authorities</a> ^ <del>district councils</del> , Ministry of Health <del>and</del> , local health agencies (e.g. MidCentral Health) <del>and iwi authorities</del> ^. <sup>62</sup>   |
| Links to Policy                      | This <a href="#">method project</a> <a href="#">links to implements</a> Policy <del>ies</del> <del>6-2, 6-8, 6-10 and 6-11</del> .  |
| Targets                              | <ul style="list-style-type: none"> <li><del>Horizons The Regional Council to extend an invitation in 2008 to all Territorial Authorities^ to actively engage with the Regional Council on this matter, and</del></li> <li>central Government funding applications completed for <i>upgrade</i>^ of sewage treatment plants as required.</li> </ul>  |

| Project Name Method 6-3 | On-site Wastewater System Forum  |
|-------------------------|--|
| Project Description     | The aim of this <a href="#">project method</a> is to facilitate implementation of the Regional Council's Manual for On-site Wastewater Systems – |

<sup>62</sup> Water officers report – recommendation WTR 61



| Project Name/Method 6-3 | On-site Wastewater System Forum  |
|-------------------------|--|
|                         | Design and Management.<br><i>Horizons The</i> Regional Council will establish a forum to aid understanding and implementation of the manual and will undertake regular reviews of new types of on-site treatment and disposal systems. |
| Who                     | The forum will comprise, as a minimum, representatives from the Regional Council, <i>Territorial Authorities</i> <sup>^</sup> , consulting engineers and system installers.  |
| Links to Policy         | This <i>project method links to implements</i> Policies 6-2 and 6-69.  |
| Target                  | Two meetings per year.   |

| Project Name/Method 6-4    | Human Sewage Discharges to Water  |
|----------------------------|---|
| <i>Project</i> Description | The Regional Council will provide assistance to <i>Territorial Authorities</i> <sup>^</sup> <i>district councils</i> to <i>upgrade</i> <sup>*</sup> existing sewage treatment systems that directly <i>discharge</i> <sup>^</sup> treated human sewage to the Region's <i>waterways bodies</i> <sup>Δ*</sup> .<br><i>Horizons The</i> Regional Council to work with <i>Territorial Authorities</i> <sup>^</sup> to reduce <i>water</i> <sup>^</sup> volume, explore <i>land-use disposal treatment</i> <sup>63</sup> options and assist with funding opportunities. |
| Who                        | <i>Horizons The</i> Regional Council <i>and</i> <i>Territorial Authorities</i> <sup>^</sup> <i>and iwi authorities</i> <sup>^</sup> . <sup>63</sup>   |
| Links to Policy            | This <i>project method links to implements</i> Policies 6-2 and 6-11 6-8.   |
| Target                     | To stop direct human sewage discharges to <i>water</i> <sup>^</sup> by 2020.  |

| Project Name/Method 6-5    | Stormwater System Discharge <i>Upgrades</i> <sup>*</sup>   |
|----------------------------|--|
| <i>Project</i> Description | The Regional Council will provide assistance to <i>district councils</i> <i>Territorial Authorities</i> <sup>^64</sup> wanting to <i>upgrade</i> <sup>*</sup> the treatment of their existing urban stormwater system <i>discharges</i> <sup>^</sup> , where these are into <i>waterways bodies</i> <sup>Δ*</sup> .<br><i>Horizons The</i> Regional Council to work with <i>Territorial Authorities</i> <sup>^</sup> to reduce <i>water</i> <sup>^</sup> volume, explore <i>land-use disposal treatment</i> <sup>64</sup> options and assist with funding opportunities. |
| Who                        | <i>Horizons The</i> Regional Council <i>and</i> <i>Territorial Authorities</i> <sup>^</sup> <i>and iwi authorities</i> <sup>^</sup> . <sup>64</sup>  |
| Links to Policy            | This <i>project method links to implements</i> Policies 6-2 and 6-8.   |
| Target                     | To reduce the number, and improve the quality, of urban stormwater <i>discharges</i> <sup>^</sup> by 2016.   |

| Project Name/Method 6-6    | Trout and Native Fish Spawning Habitat   |
|----------------------------|--|
| <i>Project</i> Description | The Regional Council and other agencies will work with landowners to protect and enhance <i>waterways bodies</i> <sup>Δ*</sup> and parts of <i>waterways</i> |

<sup>63</sup> Water officers report – recommendation WTR 63

<sup>64</sup> Water officers report – recommendation WTR 64



| Project Name/Method 6-6 | Trout and Native Fish Spawning Habitat   |
|-------------------------|--|
|                         | <p><i>bodies</i><sup>Δ*</sup> that serve as spawning <i>sites</i><sup>^</sup> for brown and rainbow trout and native fish.<sup>65</sup> Resources will be directed towards the most significant <i>sites</i><sup>^</sup>.</p> <p><i>Waterways body</i><sup>Δ*</sup> owners will be provided with advice and financial/project management assistance to carry out enhancement and protection measures including fencing, planting, <del>replacement of perched culverts</del> providing fish passage<sup>65</sup> and pest (plant and pest animal) control. The Regional Council will seek funding from third parties to assist with this <del>project method</del>.</p> <p>The effectiveness of the protection and enhancement works will be monitored.</p> <p>The <del>project method</del> will include publicity to increase public awareness about the importance of trout and native fish.<sup>65</sup></p> |
| Who                     | The Regional Council, <i>Territorial Authorities</i> <sup>^</sup> , Fish and Game and funding agencies including He Tini Awa Trust, <del>Department of Conservation, landowners</del> . <sup>65</sup>  |
| Links to Policy         | This <del>project method</del> <del>links to implements</del> Policies <del>6-2, 6-27 and 6-30</del> .   |
| Target                  | The top 30 of the top trout spawning habitat sites and native fish habitat spawning sites <sup>65</sup> are actively managed, including protection and/or enhancement measures, within 10 years of this Plan becoming <i>operative</i> <sup>^</sup> .  |

| Project Name/Method 6-7 | Water Quality Improvement  |
|-------------------------|--|
| Project Description     | <p>The Regional Council and other agencies will work with landowners to protect and enhance the <i>water</i><sup>^</sup> quality of the Region's <i>waterways bodies</i><sup>Δ*</sup>. Landowners in those <del>Water Management Sub-zones</del> where the nutrient management (non-point source discharge) control <i>rules</i><sup>^</sup> are to be introduced will receive the highest priority for assistance. This project represents an expansion of Horizons' existing <i>water</i><sup>^</sup> quality improvement programme, which focuses almost entirely on dairy farmers as part of the Dairying and Clean Streams Regional Action Plan for Manawatu-Wanganui Region.</p> <p><i>Waterways body</i><sup>Δ*</sup> owners will be provided with advice and financial/project management assistance to carry out enhancement and protection measures including fencing and planting of riparian margins. The Regional Council will seek funding from third parties to assist with this <del>project method</del>.</p> <p>The effectiveness of the protection and enhancement works will be monitored.</p> |
| Who                     | Regional Council, <del>Excel Dairy NZ</del> , Fonterra and <i>Territorial Authorities</i> <sup>^</sup> and funding agencies including the He Tini Awa Trust and Nga Whenua Rahui.  |
| Links to Policy         | This <del>project method</del> <del>links to implements</del> Policies <del>6-2, 6-4 and 6-7</del> .   |
| Targets                 | <ul style="list-style-type: none"> <li>The targets of the Dairying and Clean Streams Regional Action Plan for Manawatu-Wanganui Region are achieved by the due dates</li> </ul>  |

<sup>65</sup> Water officers report – recommendation WTR 59



| Project Name Method 6-7 | Water Quality Improvement  |
|-------------------------|--|
|                         | <ul style="list-style-type: none"> <li>Advice and assistance is offered to all landowners affected by the nutrient management (non-point source discharge) control rules<sup>66</sup></li> <li>All landowner requests for advice and assistance regarding water<sup>66</sup> quality improvement are responded to promptly.</li> </ul> |

| Project Name Method 6-8 | Education in Schools – Water   |
|-------------------------|--|
| Project Description     | The aim of this project method is to raise awareness amongst the youth of the Region of the significance of our the water (quantity and quality) resource, the threats to it, and what they can do to protect/restore it. This will be achieved through various environmental education programmes/initiatives – for example, Green RIG, Enviroschools and Trees for Survival. |
| Who                     | <del>Horizons</del> The Regional Council and various national and local environmental education providers and the Youth Environment forum. <sup>66</sup>   |
| Links to Policy         | This project method links to implements Policy 6-12.   |
| Targets                 | The Regional Council develops and delivers a water <sup>66</sup> related environmental education programme.  |

| Project Name Method 6-9 | Water (Fluvial Resources, Quality and Quantity) Research, Monitoring and Reporting   |
|-------------------------|--|
| Project Description     | The aim of this project method is to develop an integrated research, monitoring and reporting programme. <del>that</del> The focus of this project will be to define the current state of the natural character of the Region's river <sup>67</sup> by analysing the habitat and morphological diversity. This may include: Planform/ channel morphology classification; fairway width; sinuosity; barforms; percentage of pool, riffle, run, habitat; gravel resources, level of entrenchment, and location and extent of riparian and wetland <sup>67</sup> areas. The method will also seek to measure departure from natural state and changes in natural character, including habitat and morphological diversity. The outcomes will link into monitoring undertaken by the River Works Environmental Code of Practice and supports delivery and refinement of existing policies, objectives and methods. The outcomes will also guides implementation planning and allows implementation effectiveness to be assessed. <sup>67</sup> |
| Who                     | Predominantly the <del>Horizons</del> Regional Council, with assistance from research institutes, universities and non-Government agencies and Fish and Game, community groups and iwi authorities <sup>67</sup> as required. <sup>67</sup>  |
| Links to Policy         | This project method links to implements Policies 6-32, 6-4, 6-5, 6-15, 6-17, 6-27, 6-28, 6-29, 6-30, 6-31 and 6-32 and 7-8. <sup>67</sup>  |
| Targets                 | A research, monitoring and reporting programme that supports delivery and refinement of existing policies and methods and guides and assesses implementation that defines the current state of rivers <sup>67</sup> and departure from or degradation to natural state, including habitat and morphological diversity. <sup>67</sup>   |

<sup>66</sup> Water officers report – recommendation WTR 67

<sup>67</sup> Water officers report – recommendation WTR 68





## 6.6 Anticipated Environmental Results

| Anticipated Environmental Result   | Link to Policy   | Indicator   | Data Source   |
|--|--|---|---|
| <p>During the life of this Plan, <i>water</i><sup>^</sup> quality and quantity <del>maintain</del> <del>achieve</del> or <del>exceed</del><sup>68</sup> the values set in this Plan.</p> <p>In <i>Wwater Mmanagement Ssub zones</i><sup>*,1</sup></p> <ul style="list-style-type: none"> <li>where <i>water</i><sup>^</sup> quality standards are met prior to this <i>Pplan</i> becoming <i>operative</i><sup>^</sup>, they continue to be met</li> <li>where <i>water</i><sup>^</sup> quality standards are not met prior to this <i>Pplan</i> becoming <i>operative</i><sup>^</sup>, they are either met where targeted for action or, where not targeted for action, they are no worse than prior to this <i>Pplan</i> becoming <i>operative</i><sup>^</sup>.</li> </ul> | <p>Water Policies: 6-1, <del>6-2</del>, 6-3, 6-4, 6-5, 6-7, 6-8, <del>6-9</del>, <del>6-10</del>, <del>6-11</del>, 6-12, <del>6-13</del>, <del>6-14</del>, 6-15, 6-16, <del>6-18</del>, <del>6-20</del>, 6-21, <del>6-25</del>, <del>6-27</del>,<sup>68</sup> <del>6-29</del>, <del>6-30</del>, <del>6-31</del>, <del>6-32</del></p> <p>Land Policies: 5-1, 5-2, 5-3, 5-4 and 5-5</p> <p>Living Heritage Policies: 7-1, 7-2, 7-3, 7-4, 7-5 and 7.8</p> | <ul style="list-style-type: none"> <li>Measured <i>water</i><sup>^</sup> quality compared to <i>Wwater Mmanagement Ssub-zone</i><sup>*,1</sup> standards, especially measures for “muddy <i>waterways-bodies</i><sup>Δ*</sup>”, “safe swimming”, “safe food gathering”, and “aquatic ecosystem health” in priority catchments</li> <li>Incidents where surface <i>water</i><sup>^</sup> quality is confirmed as unfit for use</li> <li><del>Surface <i>Water</i><sup>^</sup> quantity and flows of surface <i>water</i><sup>^</sup> are is managed in accordance with the allocation and minimum flow regime outlined in this Plan.</del><sup>69</sup></li> </ul> | <ul style="list-style-type: none"> <li>Horizons’ <i>Sstate</i> of <i>Eenvironment</i> <i>water</i><sup>^</sup> quality monitoring programme</li> <li>Horizons’ incidents database</li> <li>Ministry of Health raw water monitoring</li> </ul>                               |
| <p>By 2017, the natural, physical and cultural qualities of the <i>beds</i><sup>^</sup> and banks of <i>river</i><sup>^</sup> management zones are suitable for specified <i>Wwater Mmanagement Ssub-zones</i><sup>*,1</sup> values at all times.</p>  | <p>Water Policies: 6-1 <del>and</del>, <del>6-27</del>,<sup>68</sup> <del>6-29</del>, <del>6-30</del>, <del>6-31</del>, <del>6-32</del></p>  | <ul style="list-style-type: none"> <li>Confirmed incidents of damage to the <i>beds</i><sup>^</sup> and banks of <i>river</i><sup>^</sup> management zones</li> <li>Consents granted for activities in <i>beds</i><sup>^</sup> of <i>rivers</i><sup>^</sup> and <i>lakes</i><sup>^</sup> <i>beds</i></li> </ul>   | <ul style="list-style-type: none"> <li>Horizons’ incidents database</li> <li>Horizons’ consents database</li> </ul>   |
| <p>By 2017, the amount of groundwater used does not exceed replenishment rates and its quality is the same as or better than that measured prior to this <i>Pplan</i> becoming <i>operative</i><sup>^</sup>.</p>   | <p>Water Policies: 6-6, <del>6-9</del>, 6-12, <del>6-13</del>, <del>6-21</del>, <del>6-22</del>, <del>6-23</del>, <del>6-24</del> and <del>6-21</del><sup>6</sup></p>  | <ul style="list-style-type: none"> <li>Groundwater levels <i>Rregion</i>-wide, but with a focus on Opiki and Himatangi areas</li> <li>Groundwater quality <i>Rregion</i>-wide, but with a focus on nitrates in Horowhenua and Tararua districts and conductivity along the Foxton-Tangimaona coast</li> <li>Confirmed incidents where groundwater sources become unavailable (i.e., dry up) or <i>water</i><sup>^</sup> quality is unfit for use</li> </ul>   | <ul style="list-style-type: none"> <li>Horizons’ <i>Sstate</i> of <i>Eenvironment</i> groundwater monitoring programme</li> <li>Horizons’ compliance monitoring programme</li> <li>Horizons’ incidents database</li> <li>Ministry of Health raw water monitoring</li> </ul> |

## 6.7 Explanations and Principal Reasons

The *Horizons* Region has been divided into *Wwater Mmanagement Ssub-zones*<sup>\*</sup> for the purpose of managing water quality and quantity. *Water bodies*<sup>\*</sup> within these *Wwater Mmanagement Ssub-zones*<sup>\*</sup> have been assigned values which

<sup>68</sup> Water officers report – recommendation WTR 69

<sup>69</sup> Water officers report – recommendation WTR 70



represent the ecosystemic, recreational, cultural and social and economic values dimensions of the *water body's\* qualities* (Objective 6-1, Policy 6-1). Standards have been assigned to protect these values (Policies 6-2 to 6-5).

### Discharges to water and land

The water chapter deals with discharges to land and water holistically. This is because discharges to land have the potential to adversely affect groundwater and surface water quality if not managed well. Four types of discharges of concern have been identified: point source discharges to land (including *domestic wastewater\**), point source discharges to water (including industrial discharges and treated sewage) and non-point source discharges to land (from agricultural land uses). All these types of discharges will be managed to meet the objectives and policies for water quality (Objective 6-1, 6-2, Policies 6-2 – 6-5), including discharges to land (~~6-9~~).

Agricultural land uses contribute to ~~our~~ waterways bodies\* not meeting ~~our~~ the Region's standards for nutrients, faecal contamination and sediment levels. These need to be targeted for control in problem catchments and through ~~our~~ the Regional Council's Sustainable Land Use Initiative (SLUI) (Policy 6-7). Control will centre around using best practice management techniques and requiring nutrient management plans.

Point source discharges to water need to be managed to achieve water quality standards (~~Policy 6-8~~). ~~Sometimes this may~~ This will often mean that it is appropriate to consider alternatives ~~to discharging to water~~ to meet these water quality standards. This may include considering alternative treatment options for all or part of the year, to achieve water quality standards at critical times of the year (Policy ~~6-8~~ ~~6-10~~). In all cases, point source discharges to water of untreated human sewage are culturally unacceptable, and direct discharges of treated human sewage should be changed to involve land treatment before discharge (~~Policy 6-11~~).

### Surface Water Quantity

Water will be used and allocated in a way ~~which that~~ enables water to be used for the wellbeing of peoples and the community wellbeing, while ~~providing for ensuring~~ other values ~~to be are~~ maintained (Objective 6-3, Policy 6-15). Water allocation limits are set for each Water Management Sub-zone\* and water will be managed to maintain these limits (Policies ~~6-16, 6-17, and 6-20~~). When water use needs to be restricted, life sustaining and essential water takes have first priority (~~Policy 6-19~~). Water harvesting and alternative sources of water to surface water are also encouraged and provided for (~~Policies 6-18 and 6-18~~ Policy 6-15). Efficiency of use is an important consideration, and will ensure that water is available to the maximum number of users and is not wasted (~~Policy Policy 6-12 and 6-13~~).

### Groundwater

Groundwater quality and quantity is connected to that of surface water and ~~this that~~ is recognised in this chapter, while providing for its management separately. *Bores\** will be managed to ensure that they are ~~of good quality~~ properly constructed and do not lead to contamination of groundwater, wastage of water or unnecessary effects on other *bores\** or surface water *bodies\** (~~Policies 6-22, 6-24, and 6-25~~). Groundwater management zones have been established and sustainable allocations set, groundwater takes will be managed within these allocations (~~6-23~~ Policy 6-21). Groundwater quality within the Region is good and is not declining, but maintaining this good quality will be a consideration when managing discharges (Policy 6-~~89~~).

### Beds of Rivers and Lakes



The physical nature of ~~our~~ the Region's rivers and lakes is important to maintaining the values assigned to them. Management of activities in the beds of rivers and lakes will be undertaken in order to maintain these values, and other important physical attributes (~~Objective 6-27, Policy 6-34~~). Some values are treated differently. Important aquatic biodiversity sites, cultural sites and natural state areas would be negatively and potentially permanently harmed by some activities and consequently are given a high level of protection (~~Policy 6-28~~). Flood control and drainage schemes have damaged water values in some areas, but also provide valuable protection services to the community. Maintaining this level of service is important, while ensuring that other values are not further compromised (~~Policy 6-29~~). While recognising the values, we acknowledgement is also needed that some activities, such as river restoration, are beneficial and should be allowed to occur (~~Policy 6-31~~).

Gravel extraction is an important activity in river beds both, for the benefit the gravel resource provides, and the flood protection benefit of having it removed from the river. However, if not well managed, too much extraction, or extraction in an inappropriate manner can damage our river values. Gravel extraction needs to be managed to ensure that extraction volumes are sustainable (Policy ~~6-32~~ 6-27).