

Representation Review 2018

Supporting information for

Council Workshop

28 February 2018

Key steps and timeline

Last day to receive a demand for a poll to change system before 2019 election	21 February 2018
Council adopts initial proposal	27 March
Public notice of initial proposal – Submissions open	By 10 April
Submissions close	10 May
Hearing to consider submissions and amend proposal	30-31 May
Public notice of final proposal	By 19 June
Appeals / Objections close	20 July
Forward appeals / objections / proposal to LGC	31 August
LGC public notification of determination	By 10 April 2019
Local body elections	12 October 2019

Factors to balance

Communities of interest

- Perceptual – a sense of belonging to a clearly defined area or locality
- Functional – the ability to meet with reasonable economy the community's requirements for comprehensive physical and human services
- Political – the ability of the elected body to represent the interests and reconcile the conflicts of all its members.

Perceptual and functional aspects can be extended, to define a community of interest as having:

- a sense of community identity and belonging reinforced by:
 - distinctive physical and topographical features (e.g. mountains, hills, rivers)
 - similarities in economic or social activities carried out in the area
 - similarities in the demographic, socio-economic and/or ethnic characteristics of the residents of a community
 - distinct local history of the area
 - the rohe or takiwā of local iwi
- dependence on shared facilities and services in an area, including:
 - schools, recreational and cultural facilities
 - retail outlets, transport and communication links.

2

Effective representation

- Requirement to have between 6 and 14 elected members;
- Where practicable, different types of electoral boundaries should coincide;
- Avoiding arrangements that may create barriers to participation, such as not recognising resident's familiarity and identification with an area;
- Not splitting recognised communities of interest;
- Not grouping together communities of interest that don't have interests in common;
- Accessibility, size and configuration of an area;
- The population has reasonable access to elected members and vice versa;
- The elected member is able to effectively represent the views of their electoral area, attend public meetings throughout the area, and provide reasonable opportunities for face to face meetings.

Fair representation

Difference between the average population per councillor, and the actual population each councillor represents should be less than 10 %.

Communities of interest

Perceptual ¹ : sense of community identity and belonging, reinforced by						Functional ² : dependence on shared facilities and services		Political ³
	Distinctive physical & topographical features	Similarities in economic or social activities carried out in the area	Similarities in demographic, socio-economic and/or ethnic characteristics of the residents of a community	Distinct local history of the area Different parts of region originally part of Taranaki, HB, Wellington Land Districts [1912 Year Book]	The rohe or takiwā of local iwi and hapū	Schools, recreational and cultural facilities	Retail outlets, transport and communication links	
Ruapehu	Isolated. Mt Ruapehu	Tourism; pastoral farming; vegetable growing; Chiefs and Hurricanes	Similar independent small communities; farming and rural based towns		Maniapoto, Tūwharetoa, Ngāti Hāua, Ngāti Uenuku, Tamakana, Ngāti Rangī, Tamahaki, Ngāti Maru	Taumaranui; Ohakune. National Park. Snow / winter sports;	Taumaranui; Ohakune. SH 1 / Desert Road; main trunk line. Upper Whanganui Scheme;	Ruapehu DC
Whanganui	Whanganui River; coastal lakes	Masters Games; Hurricanes	City	Jerusalem / River settlements	Te Ātihaunui a Pāpārangi, Tupoho, Ngaa Rauru Kīitahi, Ngāti Apa, Tamaūpoko	Whanganui – hospital; UCOL; Cooks Gardens / velodrome	Whanganui, Port, [airport]; Lower Whanganui Scheme	WDC
Manawatū-Rangitikei	Rangitikei River / Manawatū River; coastal lakes; Ruahine Ranges	Dairy farming; hill country farming; Hurricanes	Splits Manawatū District Feilding and north	Manchester Block – 106,000 acres between the Pohangina & Rangitikei Rivers. Sawmilling. Pastoral farming.	Ngāti Apa Ngā Wairiki, Raukawa (little bit), Ngāti Rangī, Ngāti Hauiti, Whitikaupeka, Tamakopiri, Ngāti Hinemanu Ngāti Paki, Te Ātihaunui a Pāpārangi, Te Iwi Mōrehu	Feilding; Bulls; Marton; Taihape. Archives Central	Feilding; Bulls; Marton; Taihape. Ohakea air base. Main trunk line. Rangitikei Scheme, Lower Manawatu Scheme	Manawatū District split on current ward boundaries (likely to shift through MDC rep review)
Palmerston North	Manawatū River; Tararua Ranges [wind farms]	Science / food technology; research; tertiary institutions; service sector; retail; speedway; Turbos, Hurricanes	Urban. Linton Army camp	Papaeoia. Sawmilling	Rangitaane (TMI)	Palmerston North City – hospital, high schools, tertiary institutions. Arena Manawatū; river walk/cycleway; Te Manawa, Centrepont, Regent Theatre, Globe, City Library. Speedway	Palmerston North City – Plaza; railway station, main trunk line, Capital Connection; airport. Lower Manawatu Scheme	PNCC
Horowhenua-Kairanga	West Coast beaches; Lake Horowhenua; coastal lakes [Tararua Ranges Horowhenua only]	West Coast beach settlements. [Vegetable growing]; Hurricanes	Splits Manawatū District, south of Feilding Horowhenua – older population	Pastoral farming. Flax trade; Foxton	Raukawa, Muaupoko (MDC); Ngāti Apa, Rangitaane interest	Levin [Palmerston North; Feilding]	Levin [Palmerston North; Feilding]. Main trunk line, Capital Connection; SH1. Drainage Schemes.	Manawatū District split on current ward boundaries (likely to shift through MDC rep review)
Tararua	Tararua Ranges; Upper Manawatū River (above the Gorge) Isolated	Dairy farming and associated industries; Hurricanes		70 Mile / 40 Mile Bush	Rangitāne o Tamaki-nui-ā-Rua); Ngāti Kahungunu ki Wairarapa Tāmaki Nui-ā-rua)	Dannevirke; Pahiatua. Pukaha Mt Bruce	Dannevirke; Pahiatua	TDC

¹ A sense of belonging to a clearly defined area or locality
² Ability to meet with reasonable economy the community’s requirements for comprehensive physical and human services
³ Ability of the elected body to represent the interests and reconcile the conflicts of all its members

Constituency boundaries

The following pages focus on 10 different possible arrangements for the Region's constituencies. They all take either the existing constituency boundaries, or the territorial authorities, as their starting point.

For each scenario there are tables to show how well the arrangement would meet the effective representation criterion (' $\pm 10\%$ '). Where there is more than one table, the different tables are based on different numbers of elected members.

The population tables for each scenario are followed by a map showing the proposed constituency boundaries as dark blue lines. Territorial authority boundaries are shown as thicker pink lines. These two sets of lines frequently overlap.

There is also a map inserted before scenarios 3 to 6 showing the Whanganui subdivisions referred to in those scenarios.

The final two maps will be used as a basis for discussing alternative approaches to defining regional constituencies.

Scenario 1 - status quo¹

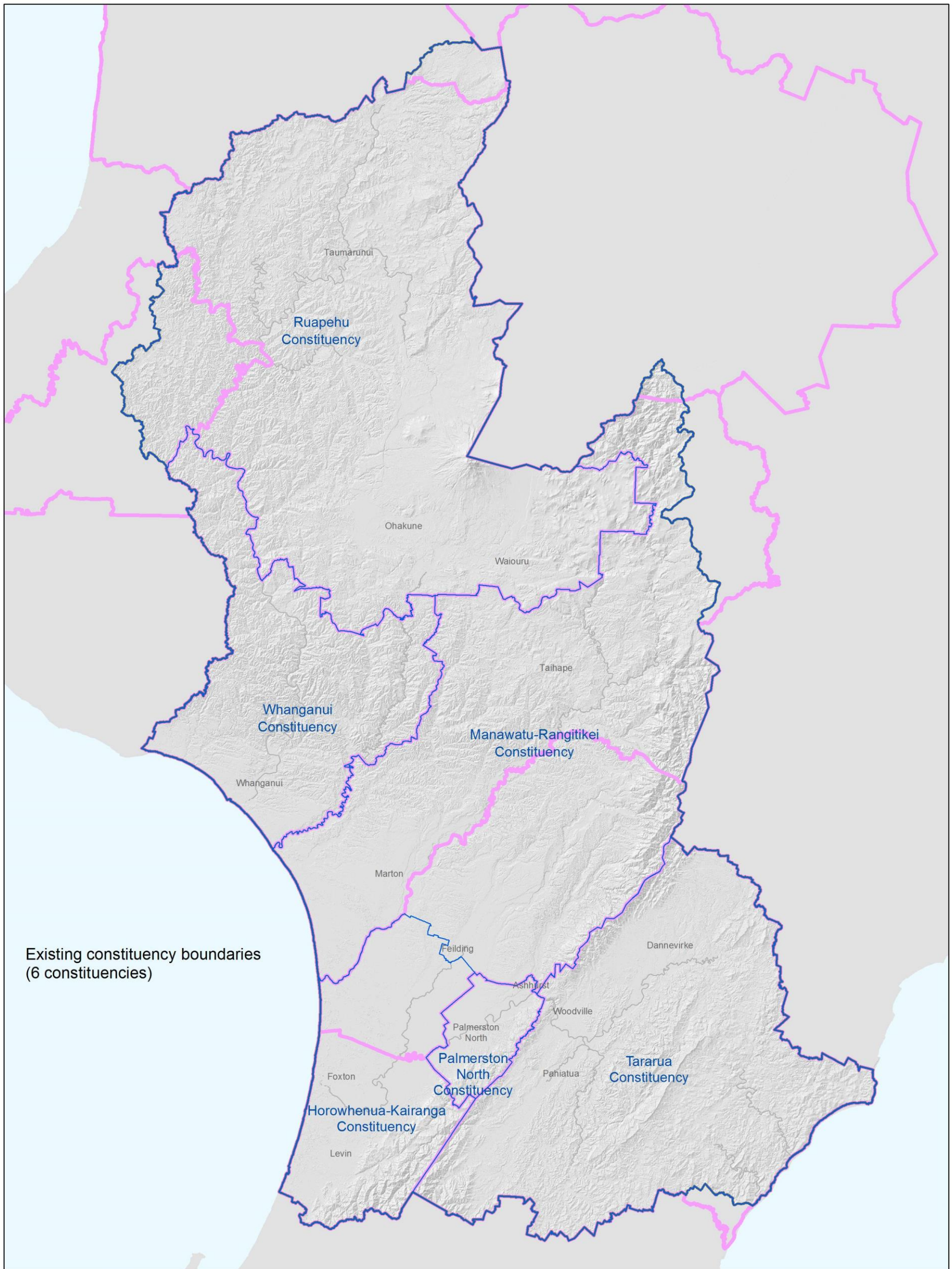
These three tables show the impact that changing the number of elected members would have on the fair representation criterion for this scenario.

CONSTITUENCIES		Total electoral population	No. of members	Population per member	Deviation from regional average	
Ruapehu constituency		12900	1	12900	7125	36%
Whanganui constituency		44500	2	22250	2225	11%
Manawatu-Rangitikei constituency		37400	2	18700	1325	7%
Palmerston North constituency		87300	4	21825	1800	9%
Horowhenua-Kairanga constituency		40300	2	20150	125	1%
Tararua constituency		17800	1	17800	2225	11%
Manawatu-Wanganui Region		240300	12	20025		

CONSTITUENCIES	Total electoral population	No. of members	Population per member	Deviation from regional average	
Ruapehu constituency	12900	1	12900	5585	30.21%
Whanganui constituency	44500	3	14833	3651	19.75%
Manawatu-Rangitikei constituency	37400	2	18700	215	1.17%
Palmerston North constituency	87300	4	21825	3340	18.07%
Horowhenua-Kairanga constituency	40300	2	20150	1665	9.01%
Tararua constituency	17800	1	17800	685	3.70%
Manawatu-Wanganui Region	240300	13	18485		

CONSTITUENCIES		Total electoral population	No. of members	Population per member	Deviation from regional average	
Ruapehu constituency		12900	1	12900	8945	41%
Whanganui constituency		44500	2	22250	405	2%
Manawatu-Rangitikei constituency		37400	1	37400	15555	71%
Palmerston North constituency		87300	4	21825	20	0%
Horowhenua-Kairanga constituency		40300	2	20150	1695	8%
Tararua constituency		17800	1	17800	4045	19%
Manawatu-Wanganui Region		240300	11	21845		

1. Source: 2017 Constituency population estimates (data extracted on 17 Nov 2017 03:43 UTC (GMT) from NZ.Stat)



Scenario 2 - Territorial authority boundaries¹

These four tables show the impact that changing the number of elected members would have on the fair representation criterion for this scenario.

CONSTITUENCIES	Total electoral population	No. of members	Population per member	Deviation from regional average	Percentage deviation
Ruapehu	12700	1	12700	4454	26%
Whanganui	44500	3	14833	2320	14%
Rangitikei	15000	1	15000	2154	13%
Manawatu	30300	2	15150	2004	12%
Palmerston North	87300	4	21825	4671	27%
Horowhenua	32500	2	16250	904	5%
Tararua	17850	1	17850	696	4%
Manawatu-Wanganui Region	240150	14	17154		

240300²

CONSTITUENCIES	Total electoral population	No. of members	Population per member	Deviation from regional average	Percentage deviation
Ruapehu	12700	1	12700	5773	31%
Whanganui	44500	2	22250	3777	20%
Rangitikei	15000	1	15000	3473	19%
Manawatu	30300	2	15150	3323	18%
Palmerston North	87300	4	21825	3352	18%
Horowhenua	32500	2	16250	2223	12%
Tararua	17850	1	17850	623	3%
Manawatu-Wanganui Region	240150	13	18473		

240300

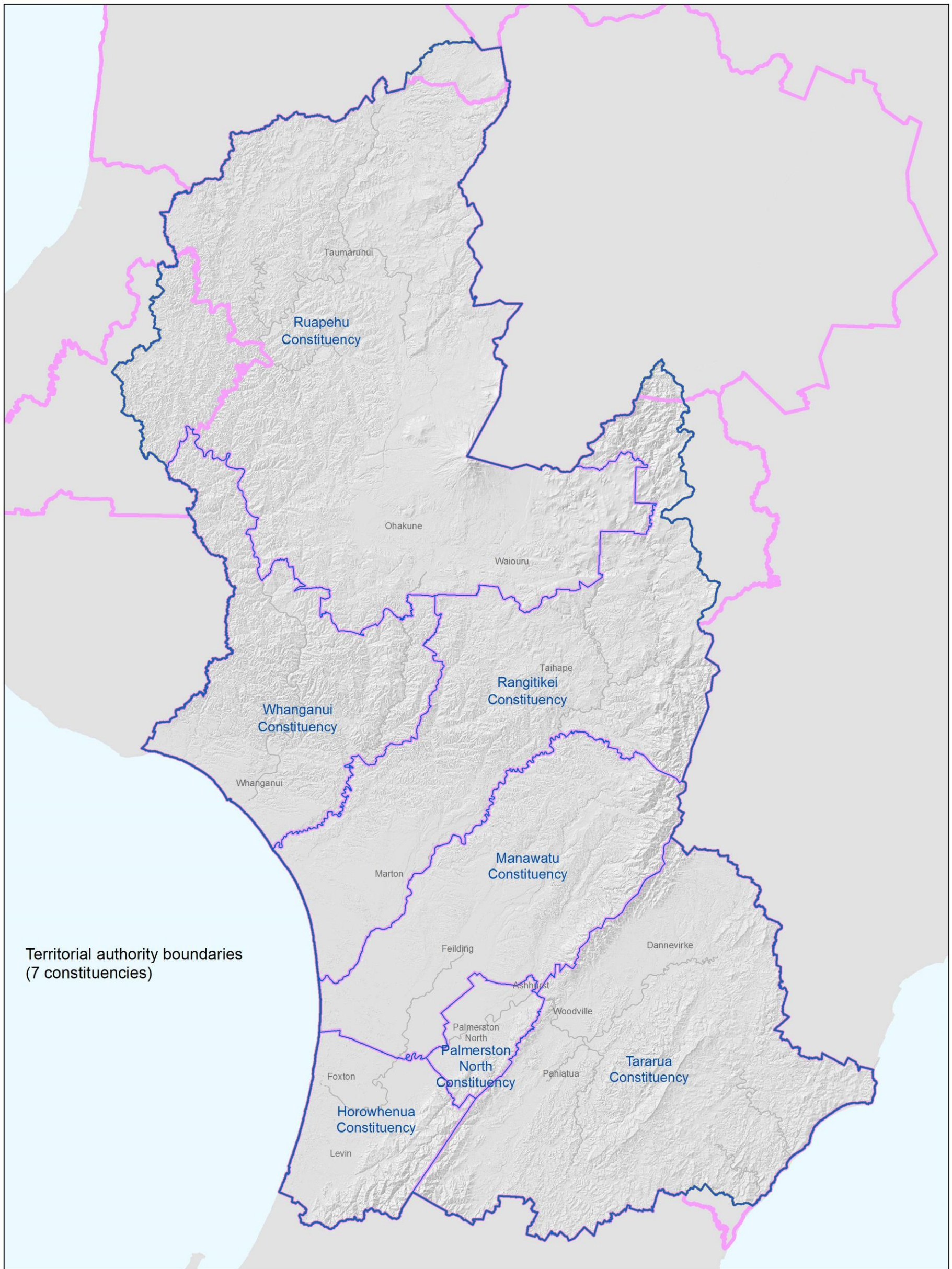
CONSTITUENCIES	Total electoral population	No. of members	Population per member	Deviation from regional average	Percentage deviation
Ruapehu	12700	1	12700	7313	37%
Whanganui	44500	2	22250	2238	11%
Rangitikei	15000	1	15000	5013	25%
Manawatu	30300	1	30300	10288	51%
Palmerston North	87300	4	21825	1813	9%
Horowhenua	32500	2	16250	3763	19%
Tararua	17850	1	17850	2163	11%
Manawatu-Wanganui Region	240150	12	20013		

240300

CONSTITUENCIES	Total electoral population	No. of members	Population per member	Deviation from regional average	Percentage deviation
Ruapehu	12700	1	12700	9132	42%
Whanganui	44500	2	22250	418	2%
Rangitikei	15000	1	15000	6832	31%
Manawatu	30300	1	30300	8468	39%
Palmerston North	87300	4	21825	7	0%
Horowhenua	32500	1	32500	10668	49%
Tararua	17850	1	17850	3982	18%
Manawatu-Wanganui Region	240150	11	21832		

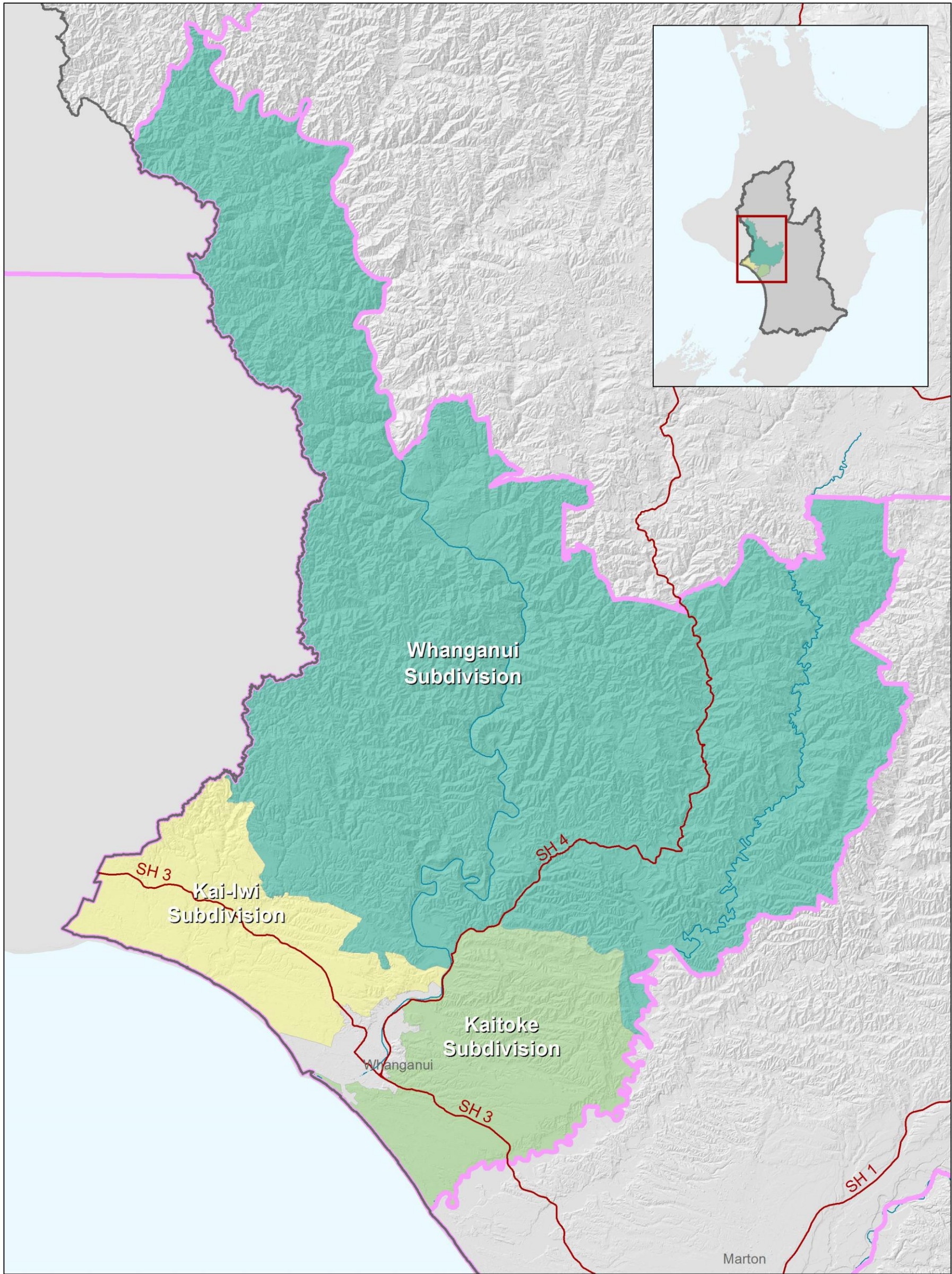
240300

1. Source: 2017 TA community population estimates (data extracted on 17 Nov 2017 03:43 UTC (GMT) from NZ.Stat)
2. The population numbers for these scenarios do not include people living outside the seven main TA boundaries in the Region. This number is the total for the whole Region including Taupo, Waitomo and Stratford residents



Territorial authority boundaries
(7 constituencies)

Whanganui District Council rural subdivisions



Scenario 3¹ – Territorial authority boundaries, combining Ruapehu and Whanganui Subdivision

These three tables show the impact tables show the impact that changing the number of elected members would have on the fair representation criterion for this scenario.

CONSTITUENCIES	Total electoral population	No. of members	Population per member	Deviation from regional average	Percentage deviation
Ruapehu-Northern Whanganui	13840	1	13840	6173	31%
Whanganui ²	43360	2	21680	1668	8%
Rangitikei	15000	1	15000	5013	25%
Manawatu	30300	1	30300	10288	51%
Palmerston North	87300	4	21825	1813	9%
Horowhenua	32500	2	16250	3763	19%
Tararua	17850	1	17850	2163	11%
Manawatu-Wanganui region	240150	12	20013		

240300³

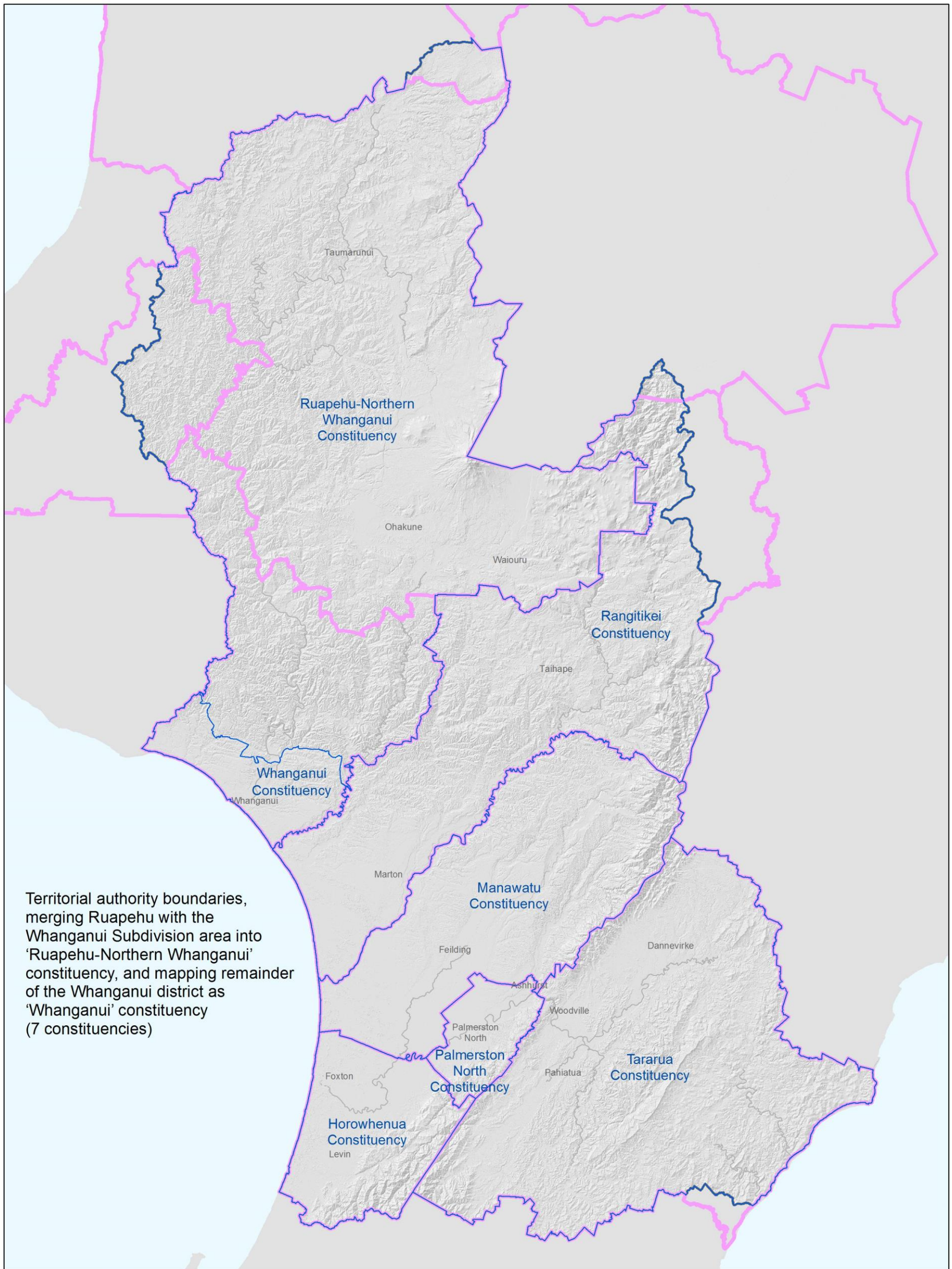
CONSTITUENCIES	Total electoral population	No. of members	Population per member	Deviation from regional average	Percentage deviation
Ruapehu-Northern Whanganui	13840	1	13840	3314	19%
Whanganui	43360	3	14453	2700	16%
Rangitikei	15000	1	15000	2154	13%
Manawatu	30300	2	15150	2004	12%
Palmerston North	87300	4	21825	4671	27%
Horowhenua	32500	2	16250	904	5%
Tararua	17850	1	17850	696	4%
Manawatu-Wanganui region	240150	14	17154		

240300

CONSTITUENCIES	Total electoral population	No. of members	Population per member	Deviation from regional average	Percentage deviation
Ruapehu-Northern Whanganui	13840	1	13840	4633	25%
Whanganui	43360	2	21680	3207	17%
Rangitikei	15000	1	15000	3473	19%
Manawatu	30300	2	15150	3323	18%
Palmerston North	87300	4	21825	3352	18%
Horowhenua	32500	2	16250	2223	12%
Tararua	17850	1	17850	623	3%
Manawatu-Wanganui region	240150	13	18473		

240300

1. Source: 2017 TA 'subdivision' estimates (data extracted on 17 Nov 2017 03:43 UTC (GMT) from NZ.Stat)
2. Includes Kai-iwi and Kaitoke Subdivisions, and the City.
3. The population numbers for these scenarios do not include people living outside the seven main TA boundaries in the Region. This number is the total for the whole Region including Taupo, Waitomo and Stratford residents



Scenario 4¹ – Territorial authority boundaries, combining Ruapehu and Whanganui, Kai-iwi and Kaitoke Subdivisions

These three tables show the impact tables show the impact that changing the number of elected members would have on the fair representation criterion for this scenario.

CONSTITUENCIES	Total electoral population	No. of members	Population per member	Deviation from regional average	Percentage deviation
Ruapehu-Whanganui ²	18430	1	18430	1583	8%
Whanganui City	38770	2	19385	628	3%
Rangitikei	15000	1	15000	5013	25%
Manawatu	30300	1	30300	10288	51%
Palmerston North	87300	4	21825	1813	9%
Horowhenua	32500	2	16250	3763	19%
Tararua	17850	1	17850	2163	11%
Manawatu-Wanganui Region	240150	12	20013		

240300³

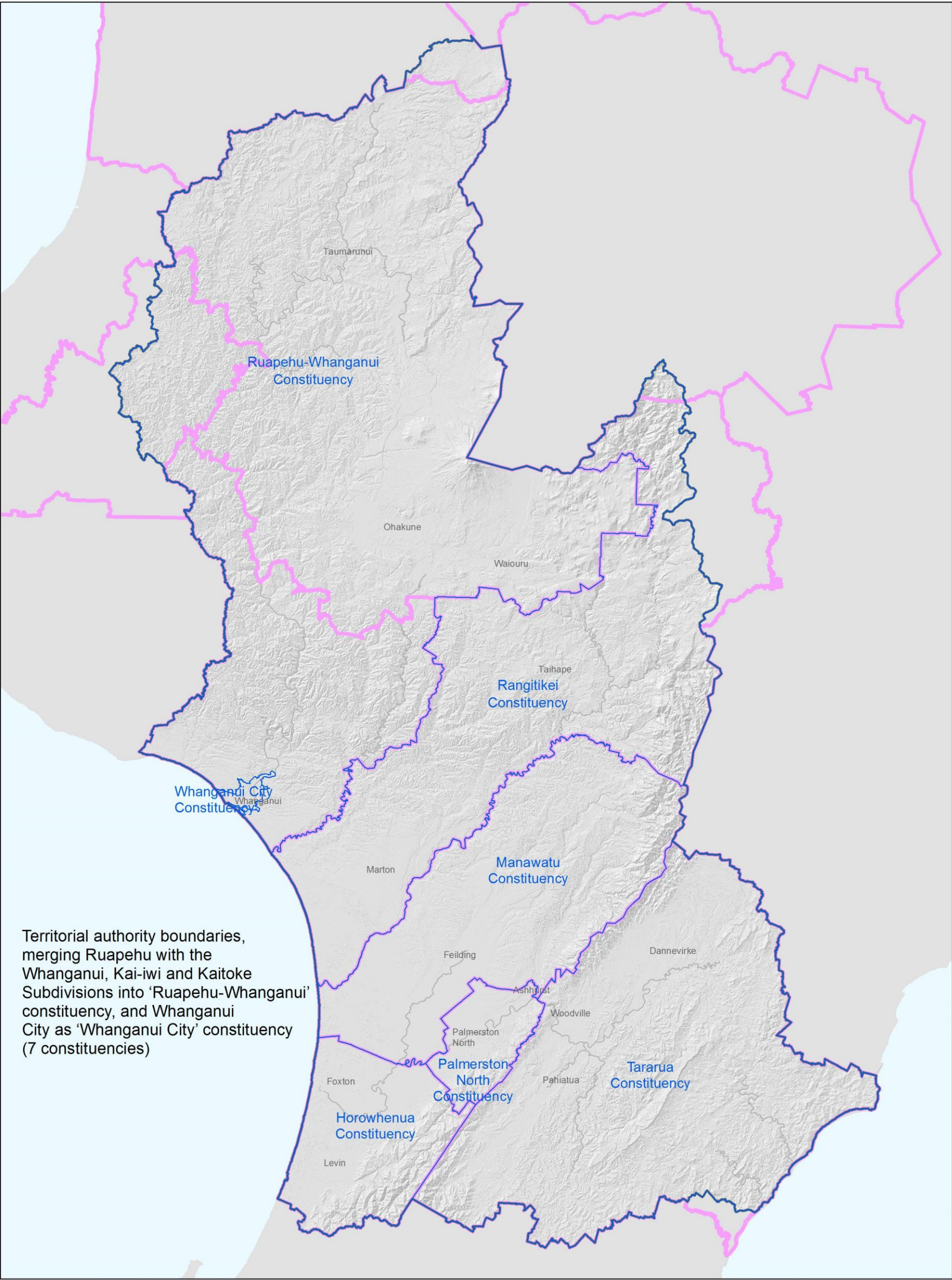
CONSTITUENCIES	Total electoral population	No. of members	Population per member	Deviation from regional average	Percentage deviation
Ruapehu-Whanganui	18430	1	18430	1276	7%
Whanganui City	38770	3	12923	4230	26%
Rangitikei	15000	1	15000	2154	13%
Manawatu	30300	2	15150	2004	12%
Palmerston North	87300	4	21825	4671	27%
Horowhenua	32500	2	16250	904	5%
Tararua	17850	1	17850	696	4%
Manawatu-Wanganui Region	240150	14	17154		

240300

CONSTITUENCIES	Total electoral population	No. of members	Population per member	Deviation from regional average	Percentage deviation
Ruapehu-Whanganui	18430	1	18430	43	0%
Whanganui City	38770	2	19385	912	6%
Rangitikei	15000	1	15000	3473	19%
Manawatu	30300	2	15150	3323	18%
Palmerston North	87300	4	21825	3352	18%
Horowhenua	32500	2	16250	2223	12%
Tararua	17850	1	17850	623	3%
Manawatu-Wanganui Region	240150	13	18473		

240300

1. Source: 2017 TA 'subdivision' estimates (data extracted on 17 Nov 2017 03:43 UTC (GMT) from NZ.Stat)
2. Includes Kai-iwi, Kaitoke and Whanganui Subdivisions
3. The population numbers for these scenarios do not include people living outside the seven main TA boundaries in the Region. This number is the total for the whole Region including Taupo, Waitomo and Stratford residents



Scenario 5 – Existing constituency boundaries, combining Ruapehu and Whanganui Subdivision¹

These two tables show the impact that changing the number of elected members would have on the fair representation criterion for this scenario.

CONSTITUENCIES	Total electoral population	No. of members	Population per member	Deviation from regional average	Percentage deviation
Ruapehu-Northern Whanganui	14040	1	14040	5977	30%
Whanganui ²	43360	2	21680	1663	8%
Manawatu-Rangitikei	37400	2	18700	1317	7%
Palmerston North	87300	4	21825	1808	9%
Horowhenua-Kairanga	40300	2	20150	133	1%
Tararua	17800	1	17800	2217	11%
Manawatu-Wanganui Region	240200	12	20017		

240300³

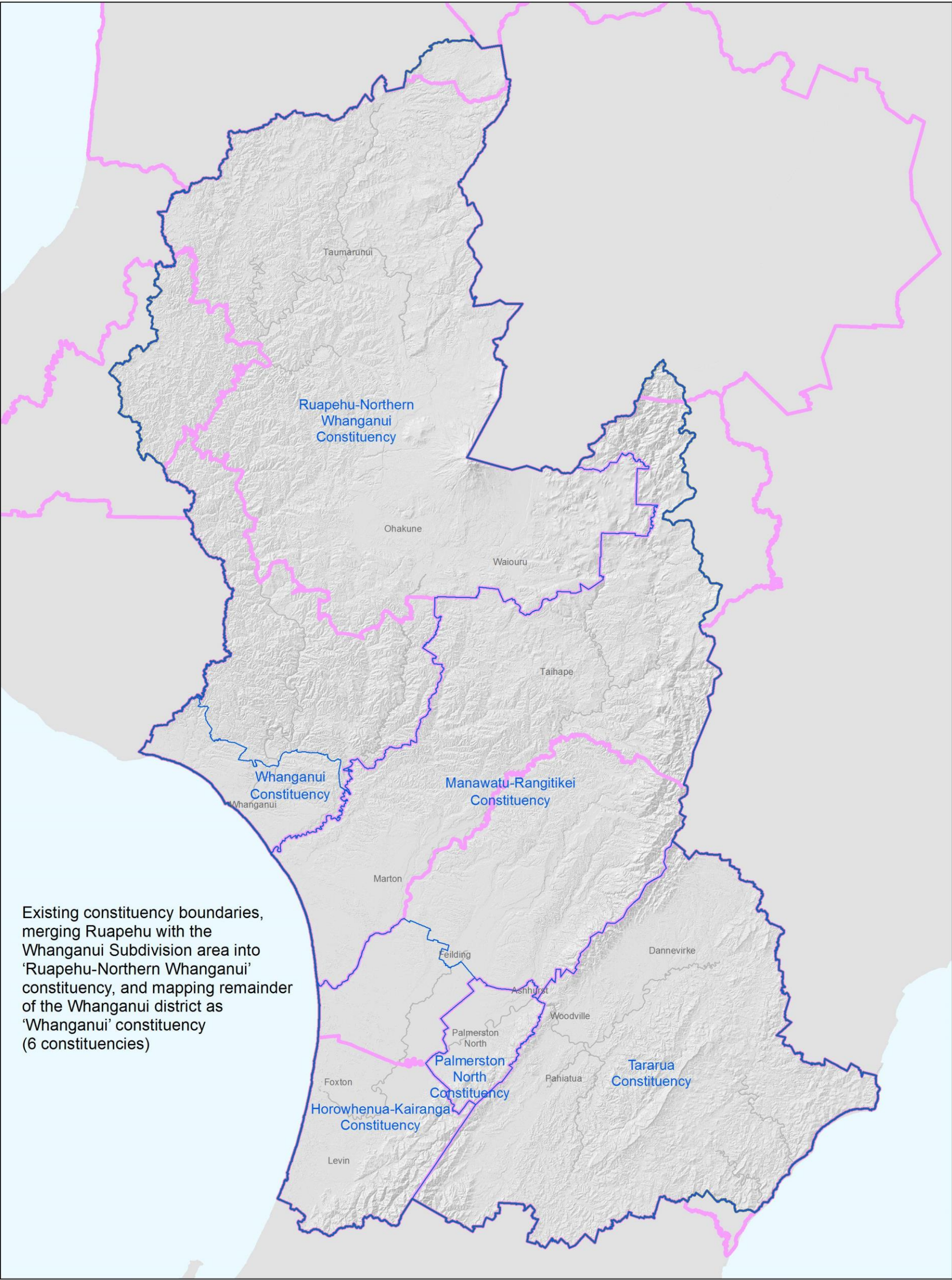
CONSTITUENCIES	Total electoral population	No. of members	Population per member	Deviation from regional average	Percentage deviation
Ruapehu-Northern Whanganui	14040	1	14040	4437	24%
Whanganui	43360	3	14453	4024	22%
Manawatu-Rangitikei	37400	2	18700	223	1%
Palmerston North	87300	4	21825	3348	18%
Horowhenua-Kairanga	40300	2	20150	1673	9%
Tararua	17800	1	17800	677	4%
Manawatu-Wanganui Region	240200	13	18477		

240300

1. Sources: 2017 TA 'subdivision' estimates and 2017 Constituency estimates (data extracted on 17 Nov 2017 03:43 UTC (GMT) from NZ.Stat)

2. Includes Kai-iwi and Kaitoke Subdivisions, and the City.

3. The population numbers for these scenarios do not include people living outside the seven main TA boundaries in the Region. This number is the total for the whole Region including Taupo, Waitomo and Stratford residents



Scenario 6¹ – Existing constituency boundaries, combining Ruapehu and Whanganui, Kai-iwi and Kaitoke Subdivisions

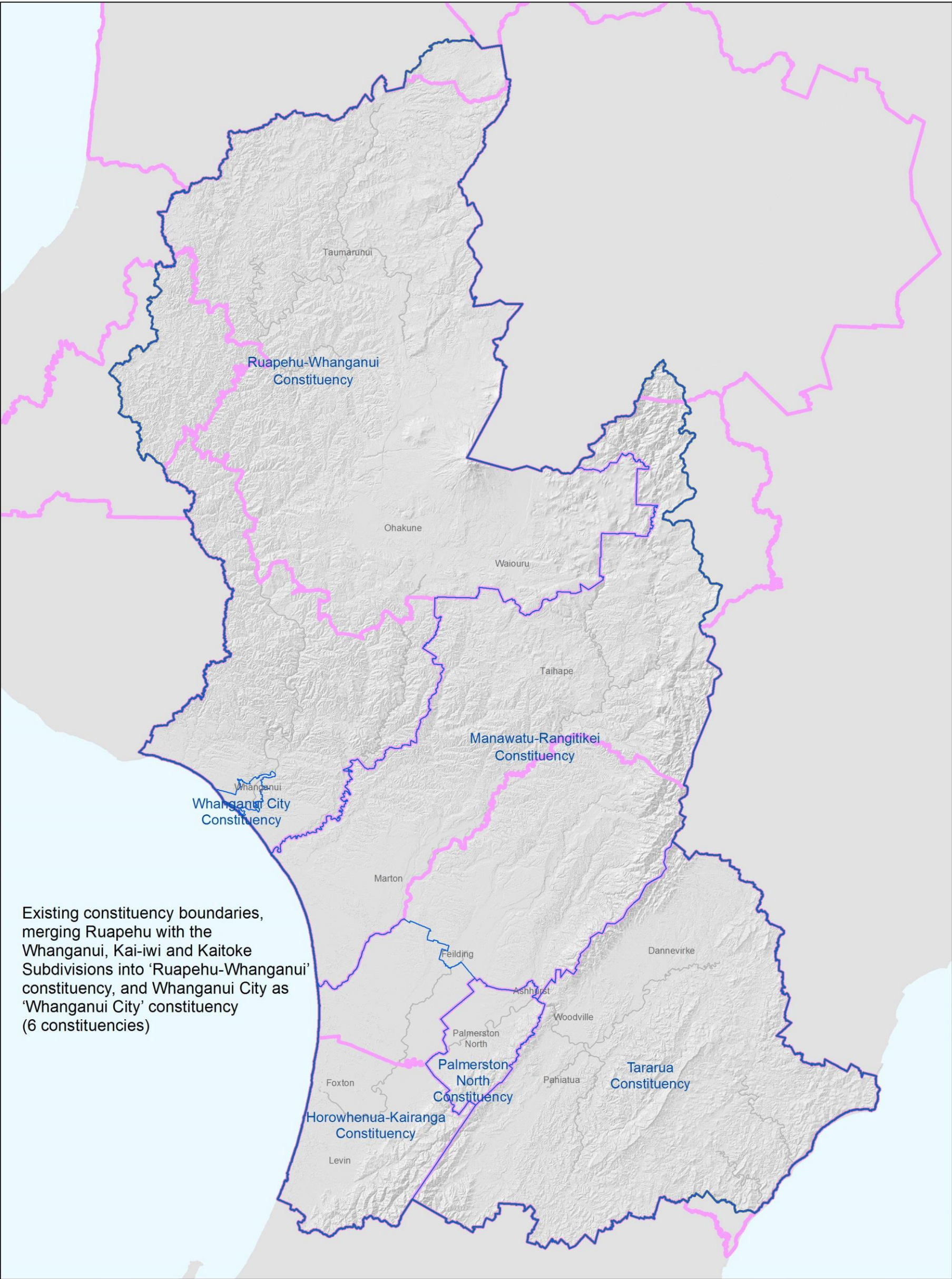
CONSTITUENCIES	Total electoral population	No. of members	Population per member	Deviation from regional average	Percentage deviation
Ruapehu-Whanganui ²	18630	1	18630	1387	7%
Whanganui City	38770	2	19385	632	3%
Manawatu-Rangitikei	37400	2	18700	1317	7%
Palmerston North	87300	4	21825	1808	9%
Horowhenua-Kairanga	40300	2	20150	133	1%
Tararua	17800	1	17800	2217	11%
Manawatu-Wanganui region	240200	12	20017		

240300

1. Sources: 2017 TA 'subdivision' estimates and 2017 Constituency estimates (data extracted on 17 Nov 2017 03:43 UTC (GMT) from NZ.Stat)

2. Includes Kai-iwi, Kaitoke and Whanganui Subdivisions

NB: The population numbers for these scenarios do not include people living outside the seven main TA boundaries in the Region (i.e. Taupo, Waitomo or Stratford residents)

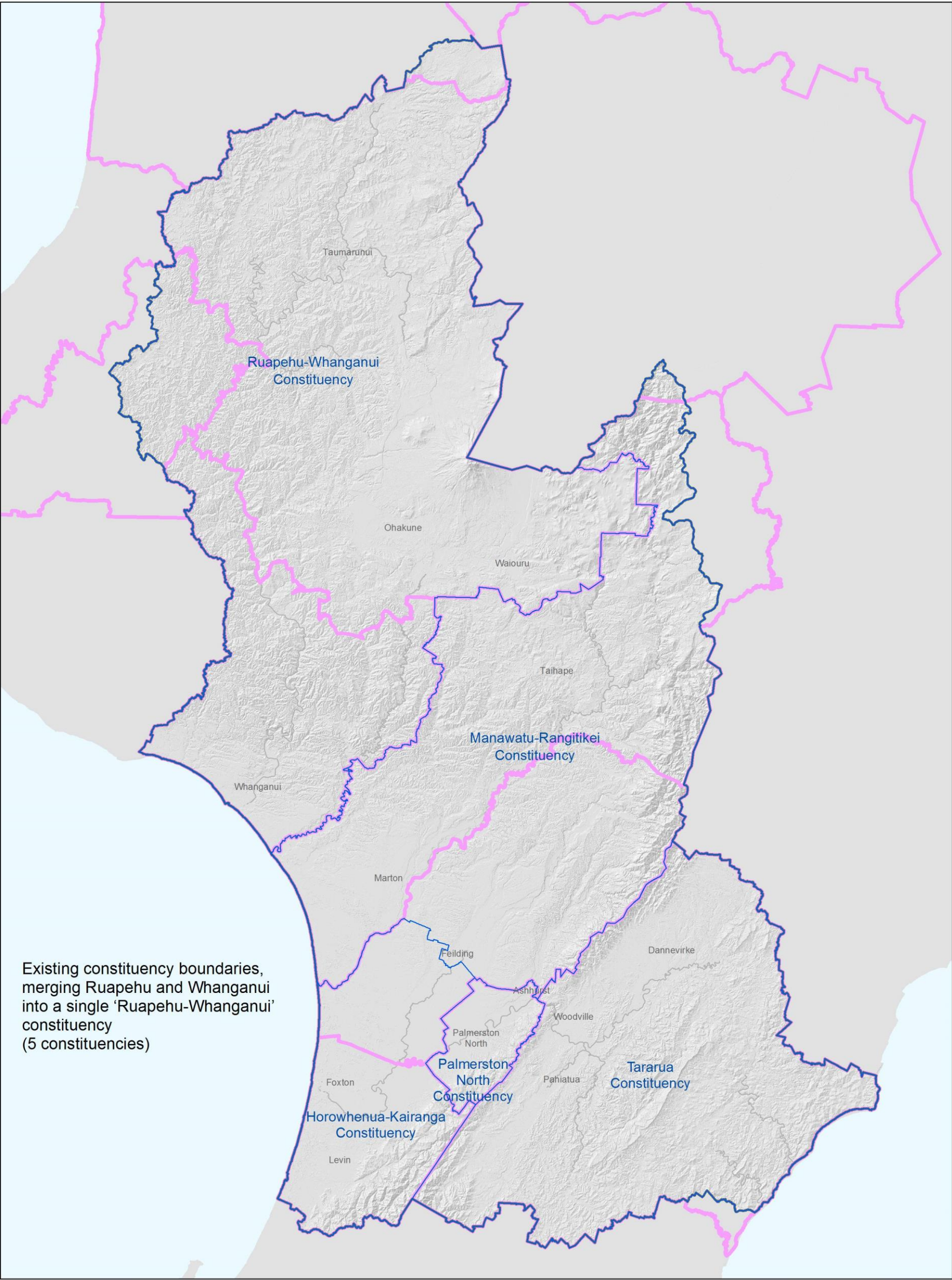


Scenario 7¹ – Existing constituency boundaries, combining Ruapehu and Whanganui constituencies

CONSTITUENCIES	Total electoral population	No. of members	Population per member	Deviation from regional average	Percentage deviation
Ruapehu-Whanganui	57400	3	19133	883	4%
Manawatu-Rangitikei	37400	2	18700	1317	7%
Palmerston North	87300	4	21825	1808	9%
Horowhenua-Kairanga	40300	2	20150	133	1%
Tararua	17800	1	17800	2217	11%
Manawatu-Wanganui region	240200	12	20017		

240300

1. Source: 2017 Constituency population estimates (data extracted on 17 Nov 2017 03:43 UTC (GMT) from NZ.Stat)



Scenario 8 – Territorial authority boundaries merging Ruapehu and Whanganui¹

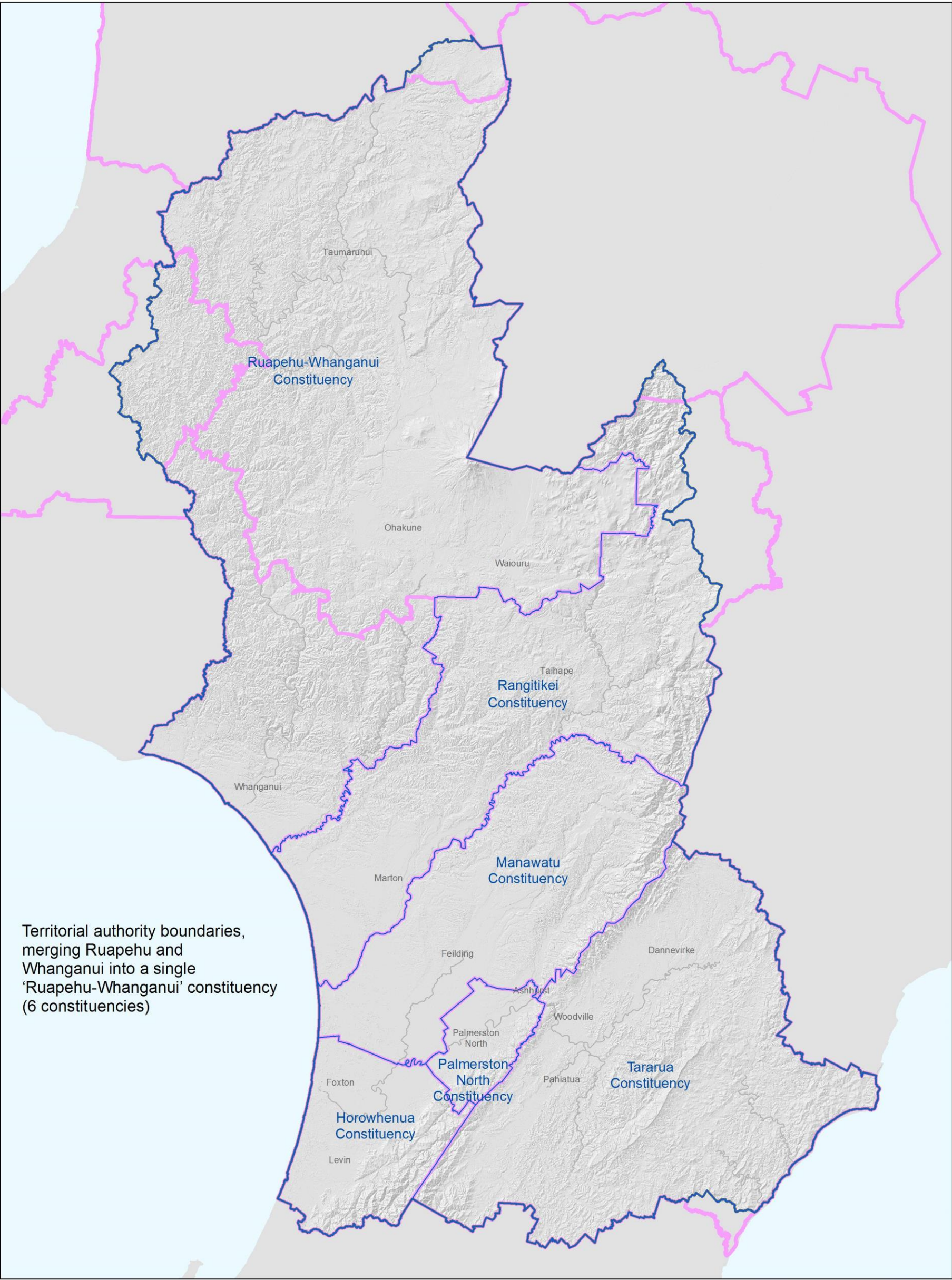
These two tables show the impact that changing the number of elected members would have on the fair representation criterion for this scenario.

CONSTITUENCIES	Total electoral population	No. of members	Population per member	Deviation from regional average	Percentage deviation
Ruapehu-Whanganui	57200	3	19067	-594	-3%
Rangitikei	15000	1	15000	3473	19%
Manawatu	30300	2	15150	3323	18%
Palmerston North	87300	4	21825	3352	18%
Horowhenua	32500	2	16250	2223	12%
Tararua	17850	1	17850	-623	-3%
Manawatu-Wanganui region	240150	13	18473		
240300					

CONSTITUENCIES	Total electoral population	No. of members	Population per member	Deviation from regional average	Percentage deviation
Ruapehu-Whanganui	57200	2	28600	-8588	-43%
Rangitikei	15000	1	15000	5013	25%
Manawatu	30300	2	15150	4863	24%
Palmerston North	87300	4	21825	1813	9%
Horowhenua	32500	2	16250	3763	19%
Tararua	17850	1	17850	2163	11%
Manawatu-Wanganui region	240150	12	20013		
240300					

1. Source: 2017 TA community population estimates (data extracted on 17 Nov 2017 03:43 UTC (GMT) from NZ.Stat)

NB: The population numbers for these scenarios do not include people living outside the seven main TA boundaries in the Region (i.e. Taupo, Waitomo or Stratford residents)



Scenario 9 - Territorial authority boundaries¹, merging Manawatū with Rangitikei

These two tables show the impact that changing the number of elected members would have on the fair representation criterion for this scenario.

CONSTITUENCIES	Total electoral population	No. of members	Population per member	Deviation from regional average	Percentage deviation
Ruapehu	12700	1	12700	9132	42%
Whanganui	44500	2	22250	418	2%
Rangitikei-Manawatu	45300	2	22650	818	4%
Palmerston North	87300	4	21825	7	0%
Horowhenua	32500	1	32500	10668	49%
Tararua	17850	1	17850	3982	18%
Manawatu-Wanganui region	240150	11	21832		

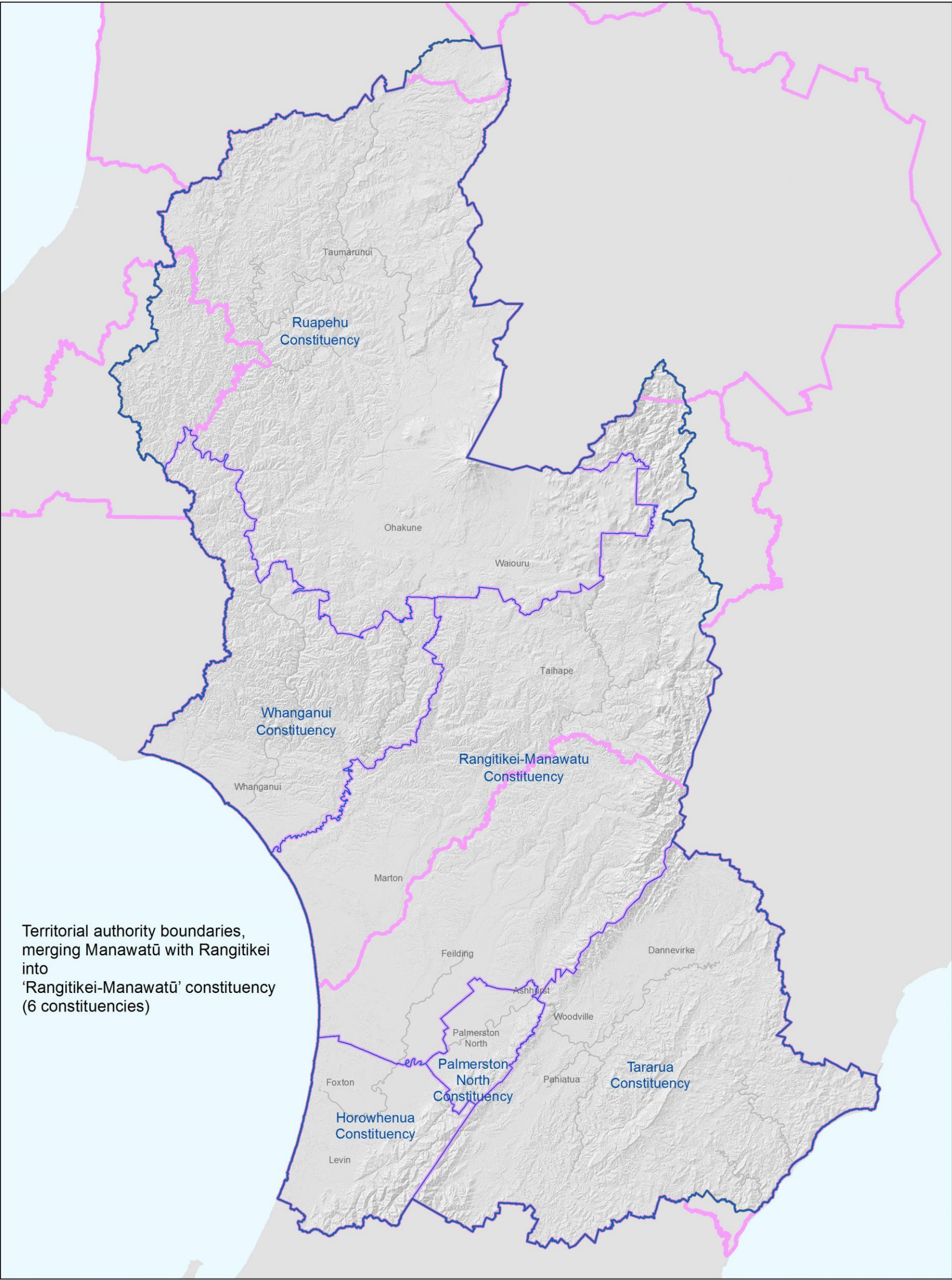
240300

CONSTITUENCIES	Total electoral population	No. of members	Population per member	Deviation from regional average	Percentage deviation
Ruapehu	12700	1	12700	7313	37%
Whanganui	44500	2	22250	2238	11%
Rangitikei-Manawatu	45300	2	22650	2638	13%
Palmerston North	87300	4	21825	1813	9%
Horowhenua	32500	2	16250	3763	19%
Tararua	17850	1	17850	2163	11%
Manawatu-Wanganui region	240150	12	20013		

240300

1. Source: 2017 TA community population estimates (data extracted on 17 Nov 2017 03:43 UTC (GMT) from NZ.Stat)

NB: The population numbers for these scenarios do not include people living outside the seven main TA boundaries in the Region (i.e. Taupo, Waitomo or Stratford residents)



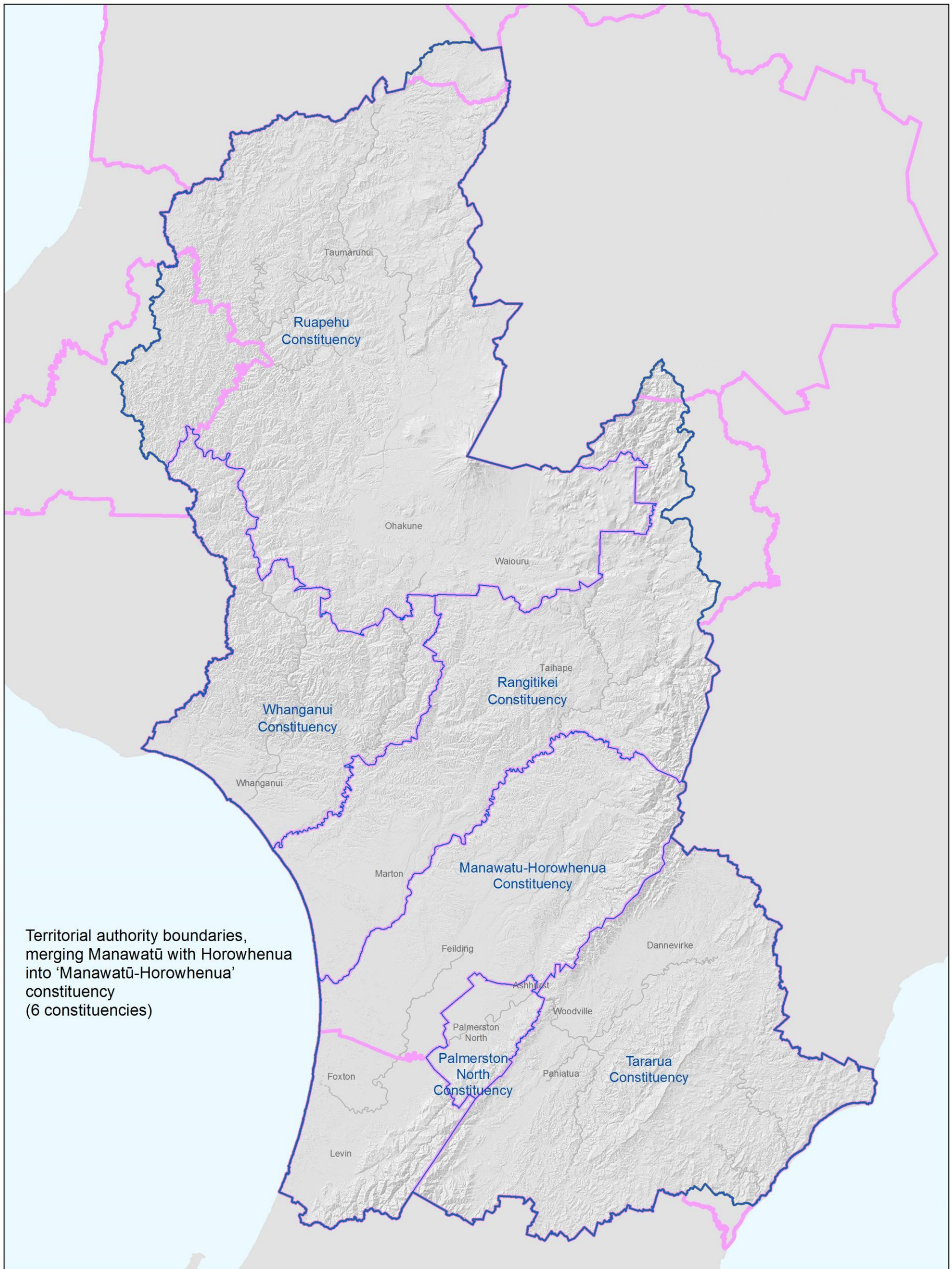
Scenario 10 - Territorial authority boundaries¹, merging Manawatū with Horowhenua

CONSTITUENCIES	Total electoral population	No. of members	Population per member	Deviation from regional average	Percentage deviation
Ruapehu	12700	1	12700	7313	37%
Whanganui	44500	2	22250	2238	11%
Rangitikei	15000	1	15000	5013	25%
Manawatu-Horowhenua	62800	3	20933	921	5%
Palmerston North	87300	4	21825	1813	9%
Tararua	17850	1	17850	2163	11%
Manawatu-Wanganui region	240150	12	20013		

240300

1. Source: 2017 TA community population estimates (data extracted on 17 Nov 2017 03:43 UTC (GMT) from NZ.Stat)

NB: The population numbers for these scenarios do not include people living outside the seven main TA boundaries in the Region (i.e. Taupo, Waitomo or Stratford residents)



Territorial authority boundaries,
merging Manawātū with Horowhenua
into 'Manawātū-Horowhenua'
constituency
(6 constituencies)

‘Left field’ approach – Freshwater Management Units

