

Notes for track changes. Recommendations made by the Historic Heritage officer are shown in **Blue**. Recommendations made by the Water officer are shown in **Green**. Recommendations made by the Supplementary Officers Report for water are shown in **Red**. Sentences shown in ~~black~~ strikethrough or are recommended within the Officer's Report to be relocated to other parts of the document, those sentences that have been relocated are shown in black underline. Words recommended to be added are shown in underline, words recommended to be removed are shown in ~~strike through~~

Terms defined within the Proposed One Plan glossary are *italicised* and marked with an asterisk (\*) symbol. Terms defined in the Resource Management Act 1991 are *italicised* and marked with a caret (^) symbol.

## **Schedule Ba: *Water Management Zones\** and Associated Values – Surface *Water^* and Groundwater**

### **3 SCHEDULE Ba TABLE OF CONTENTS:**

<b><u>Page Numbers</u></b>	<b><u>Section</u></b>
<del>Ba-1 – Ba-2939</del>	<b><u>PART Ba1: <i>Water Management Zones*</i></u></b>
<del>Ba-2 – Ba-4</del>	Ba1.1 <u>Surface <i>Water Management Zone*</i> catchment finder</u>
<del>Ba-5 – Ba-2634</del>	Ba1.2 <u>Surface <i>Water^</i> Management Sub-Zones (WMSZ) listed by catchment</u>
<del>Ba-2735 – Ba-2939</del>	Ba1.3 <u>Groundwater Management Zone (GWMZ) finder</u>
<del>Ba-3040 – Ba-144154</del>	<b><u>PART Ba2: Surface <i>Water^</i> Management Values</u></b>
<del>Ba-3040 – Ba-4353</del>	Ba2.1 <u>Surface <i>Water^</i> Management Values listed by Sub-zone</u>
<del>Ba-4454 – Ba-144152</del>	Ba2.2 <u>How and where specific <i>Water^</i> Management Values apply</u>
<del>Ba-142153 – Ba-143154</del>	<b><u>FOLD-OUT <i>WATER^</i> MANAGEMENT VALUES KEY<sup>1</sup></u></b>

#### **USER GUIDE: How to use the contents of this schedule**

**Step 1:** Locate which WMSZ/GWMZ your proposed activity is in

**Step 2:** Identify which Surface *Water^* Management Values apply to your WMSZ

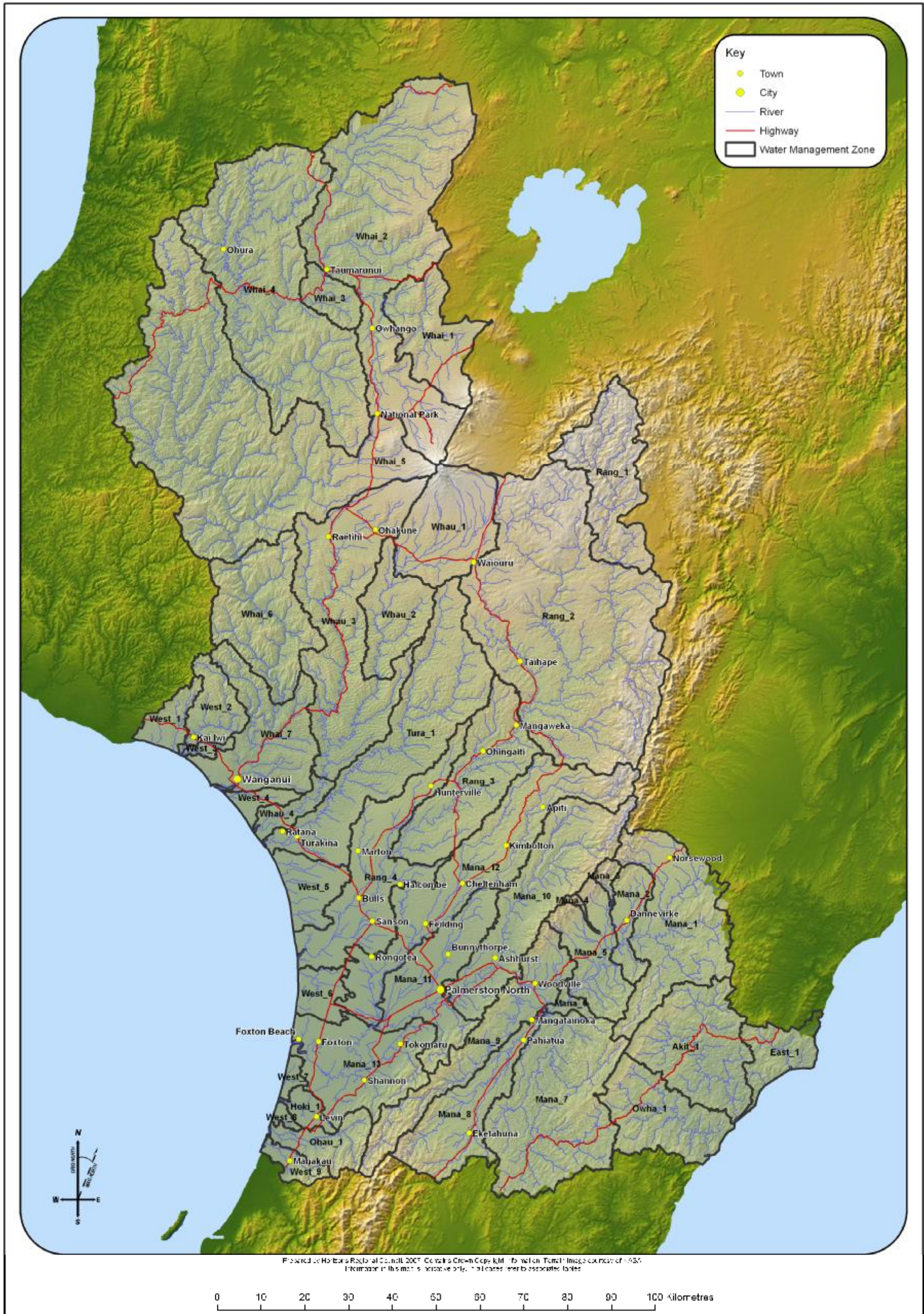
<sup>1</sup> Note to the Hearing Panel: This key is conceptualised but has not been fully designed to work as it would in the plan as yet

**Management Zones and Sub-zones**



**Map D:1** Water Management Zones in the Manawatu-Wanganui Region

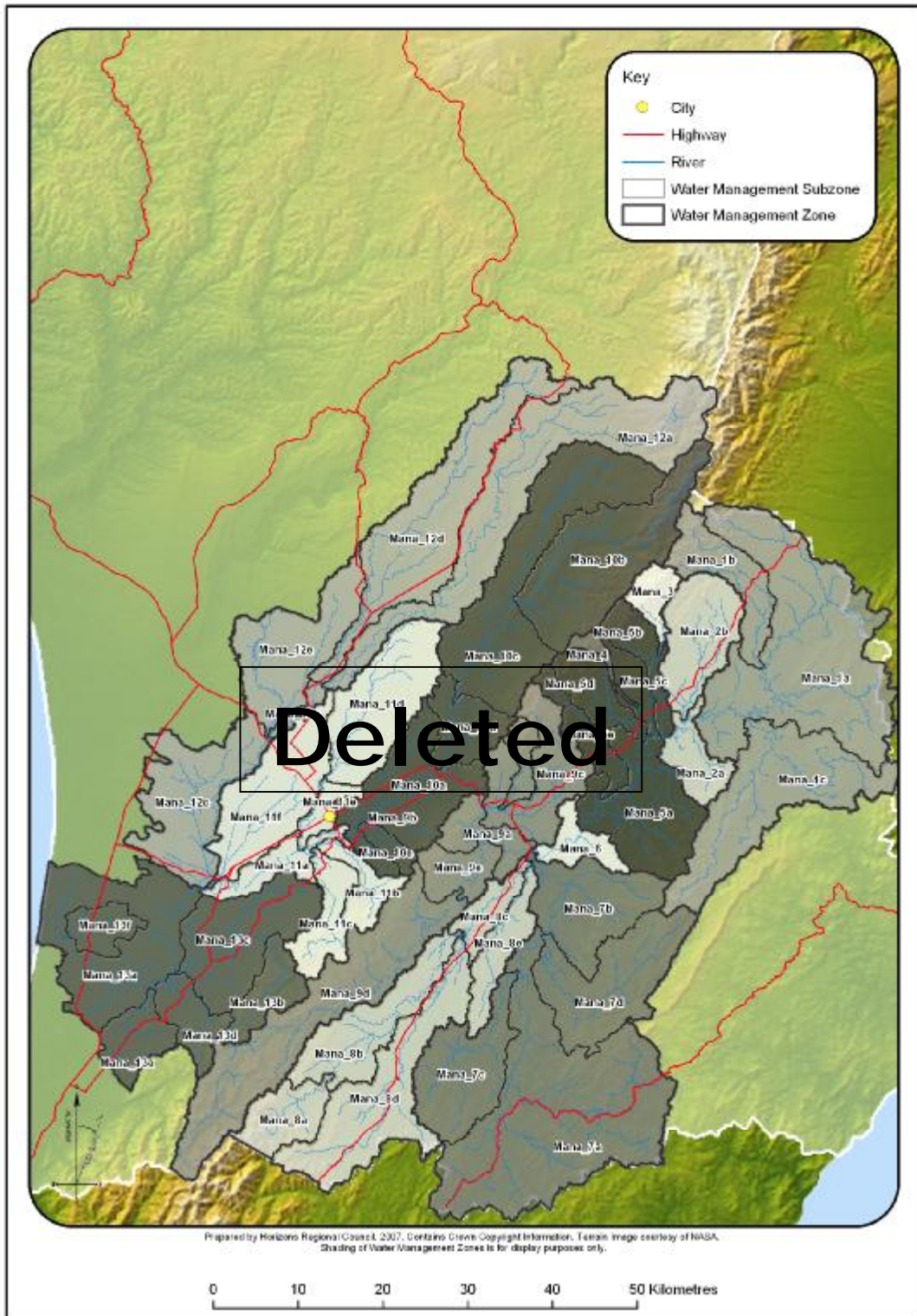
**PART Ba1.1: Surface Water Management Zone\* Catchment Finder**



**Map Ba 1:** Catchment Finder - showing parent catchments for each of the Surface Water Management Zones\* in the Region (refer to table Ba1 for Water Management Zone names).

Table Ba1: Parent Catchments and Surface *Water Management Zones*\* in the Manawatu Wanganui Region.

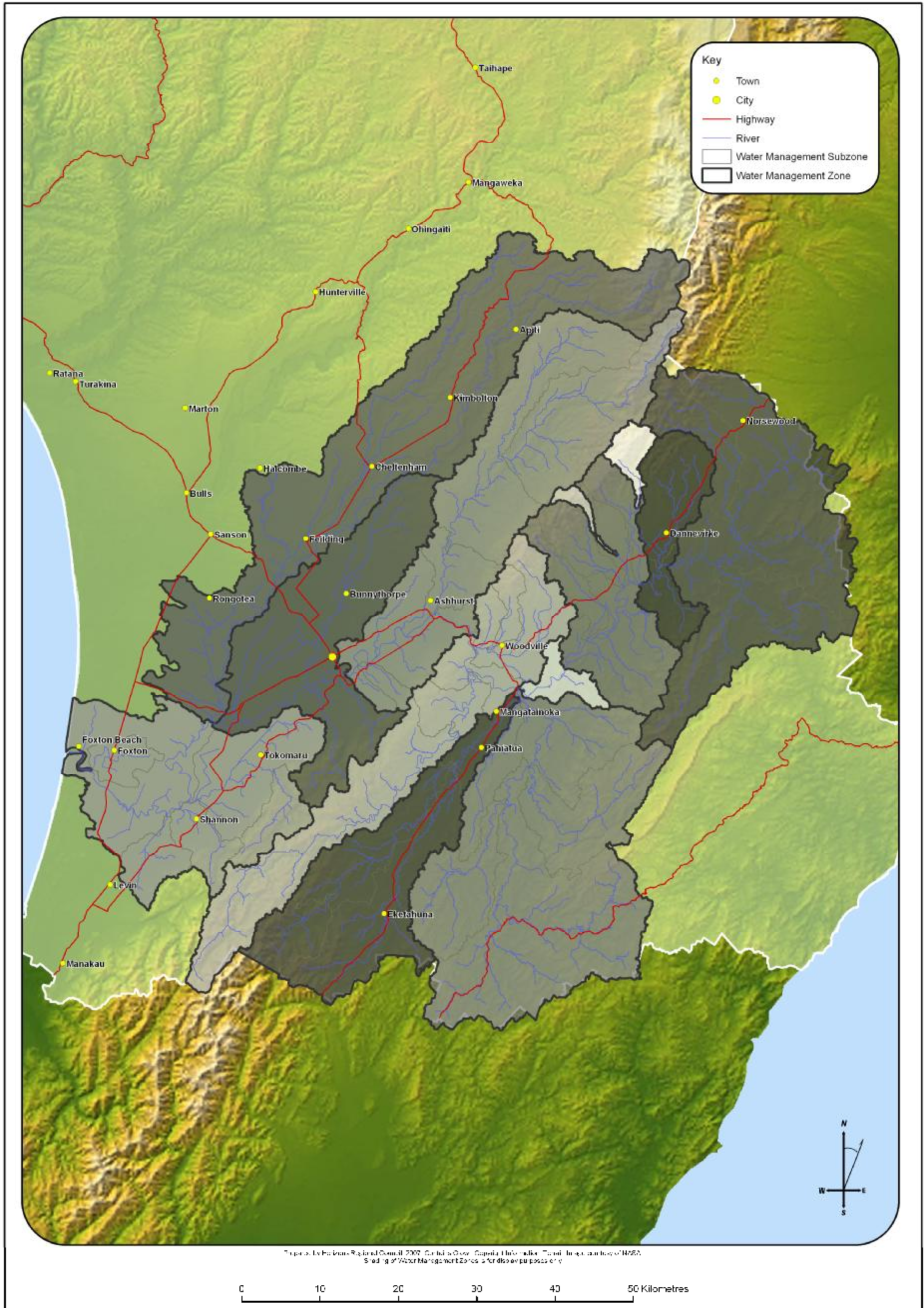
Parent Catchment	Surface <i>Water Management Zone</i> * Code	Surface <i>Water Management Zone</i> *
<u>Manawatu</u>	Mana 1	Upper Manawatu
	Mana 2	Weber-Tamaki
	Mana 3	Upper Tamaki
	Mana 4	Upper Kumeti
	Mana 5	Tamaki-Hopelands
	Mana 6	Hopelands-Tiraumea
	Mana 7	Tiarumea
	Mana 8	Mangatainoka
	Mana 9	Upper Gorge
	Mana 10	Middle Manawatu
	Mana 11	Lower Manawatu
	Mana 12	Oroua
	Mana 13	Coastal Manawatu
<u>Rangitikei</u>	Rang 1	Upper Rangitikei
	Rang 2	Middle Rangitikei
	Rang 3	Lower Rangitikei
	Rang 4	Coastal Rangitikei
<u>Whanganui</u>	Whai 1	Upper Whanganui
	Whai 2	Cherry Grove
	Whai 3	Te Maire
	Whai 4	Middle Whanganui
	Whai 5	Pipiriki
	Whai 6	Paetawa
	Whai 7	Lower Whanganui
<u>Whangaehu</u>	Whau 1	Upper Whangaehu
	Whau 2	Middle Whangaehu
	Whau 3	Lower Whangaehu
	Whau 4	Coastal Whangaehu
<u>Turakina</u>	Tura 1	Turakina
<u>Ohau</u>	Ohau 1	Ohau
<u>Owahanga</u>	Owha 1	Owahanga
<u>East Coast</u>	East 1	East Coast
<u>Akitio</u>	Akit 1	Akitio
<u>West Coast</u>	West 1	Northern Coastal
	West 2	Kai Iwi
	West 3	Mowhanau
	West 4	Kaitoke Lakes
	West 5	Southern Whanganui Lakes
	West 6	Northern Manawatu Lakes
	West 7	Waitarere
	West 8	Lake Papaitonga
	West 9	Waikawa
<u>Lake Horowhenua</u>	Hoki 1	Lake Horowhenua



**Map D:2** Manawatu Catchment Water Management Zones and Sub-zones



**Ba1.2 Surface Water Management Sub-Zones Listed by Catchment**



**Map Ba 2:** Manawatu Catchment - Surface Water Management Zones\* and Sub-zones (refer to Table Ba2 for Water Management Sub-zone names).

Table Ba2: Description of Manawatu Catchment Surface Water Management Zones\* and Sub-zones<sup>2</sup>

Management Zone	Management Sub-zone	Sub-zone Description <sup>3</sup>
Upper Manawatu (Mana_1)	Upper Manawatu (Mana_1a)	Manawatu River – <del>source to</del> from Weber Road at approx. NZMS 260 (U23:751-027) to source
	Mangatewainui (Mana_1b)	Mangatewainui River – <del>source to</del> from Manawatu confluence at approx. NZMS 260 (U23:829-086) to source.
	Mangatoro (Mana_1c)	Mangatoro Stream – <del>source to</del> from Manawatu confluence at approx. NZMS 260 (U23:810-027) to source
Weber-Tamaki (Mana_2)	Weber-Tamaki (Mana_2a)	Manawatu River – <del>Weber Road to</del> from Tamaki confluence at approx. NZMS 260 (U23:709-003) to Weber road
	Mangatera (Mana_2b)	Mangatera Stream – <del>source to</del> from Manawatu confluence at approx. NZMS 260 (U23:737-025) to source
Upper Tamaki (Mana_3)	Upper Tamaki	Tamaki River – <del>source to</del> from water supply weir at approx. NZMS 260 (U23:709-111) to source
Upper Kumeti (Mana_4)	Upper Kumeti	Kumeti Stream - <del>source to</del> from Te Rehunga flow recorder at approx. NZMS 260 (T23:663-052) to source
Tamaki-Hopelands (Mana_5)	Tamaki-Hopelands (Mana_5a)	Manawatu River – <del>Tamaki confluence to</del> from Hopelands at approx. NZMS 260 (T24: 616-899) to Tamaki confluence
	Lower Tamaki (Mana_5b)	Tamaki River – <del>Water supply weir to</del> from Manawatu confluence at approx. NZMS 260 (U23:709-002) to water supply weir
	Lower Kumeti (Mana_5c)	Kumeti Stream – <del>Te Rehunga to</del> from Manawatu confluence at approx. NZMS 260 (U23:701-006) to Te Rehunga flow recorder
	Oruakeretaki (Mana_5d)	Oruakeretaki Stream – <del>source to</del> from Manawatu confluence at approx. NZMS 260 (T23:690-000) to source
	Raparapawai (Mana_5e)	Raparapawai Stream – <del>source to</del> from Manawatu confluence at approx. NZMS 260 (T24:643-932) to source
Hopelands-Tiraumea (Mana_6)	Hopelands-Tiraumea (Mana_6)	Manawatu River – <del>Hopelands to</del> from Tiraumea confluence (Ngawapurua) at approx. NZMS 260 (T24:553-870) to Hopelands
Tiraumea (Mana_7)	Upper Tiraumea (Mana_7a)	Tiraumea River – <del>Ngaturi from Makuri confluence to</del> from Manawatu confluence at approx. NZMS 260 (T24:578-780) to source
	Lower Tiraumea (Mana_7b)	Tiraumea River – <del>Ngaturi confluence to</del> from Manawatu confluence at approx. NZMS 260 (T24:555-870) to Makuri confluence
	Mangaone River (Mana_7c)	Mangaone River – <del>source to</del> from Tiraumea confluence at approx. NZMS 260 (T24:541-730) to source
	Makuri (Mana_7d)	Makuri River – <del>source to</del> from Tiraumea confluence at approx. NZMS 260 (T24:568-771) to source
	Mangaramarama (Mana_7e) (Mana_8e)	Mangaramarama Creek – <del>source to</del> Mangatainoka confluence (T24 :557-844) from Tiraumea confluence at approx. NZMS 260 T24:559-854 to source
Mangatainoka (Mana_8)	Upper Mangatainoka (Mana_8a)	Mangatainoka River from <del>Source to</del> Larsons Road at approx. NZMS 260 T25:308-595 to source
	Middle Mangatainoka (Mana_8b)	Mangatainoka River from <del>Larsons Road to</del> downstream Makakahi confluence at approx. NZMS 260 T24:475-775 to Larsons Road
	Lower Mangatainoka (Mana_8c)	Mangatainoka River from <del>Makakahi confluence to</del> Tiraumea confluence at approx. NZMS 260 T24:577-854 to Makakahi confluence
	Makakahi (Mana_8d)	Makakahi River – <del>source to</del> from Mangatainoka confluence at approx. NZMS 260 T24:475-775 to source
	Mangaramarama (Mana_8e)	Mangaramarama Creek – <del>source to</del> Mangatainoka confluence (T24 :557-844)
Upper Gorge (Mana_9)	Upper Gorge (Mana_9a)	Manawatu River – <del>Tiraumea confluence to</del> from Upper Gorge flow recorder at approx (T24:494-933) to Tiraumea confluence
	Mangapapa (Mana_9b)	Mangapapa Stream – <del>source to</del> from Mangaatua confluence at approx NZMS 260 (T24:515-922) to source
	Mangaatua (Mana_9c)	Mangaatua Stream – <del>source to</del> from Manawatu confluence at approx. NZMS 260 (T24:496-925) to source
	Upper Mangahao (Mana_9d)	Mangahao River – <del>source to</del> Balance from Balance at approx. NZMS 260 (T24:468-818) to source
	Lower Mangahao (Mana_9e)	Mangahao River – <del>Balance to</del> from Manawatu confluence at approx. NZMS 260 (T24:496-891) to Balance
Middle Manawatu (Mana_10)	Middle Manawatu (Mana_10a)	Manawatu River – <del>Upper Gorge to</del> from Teacher's College at approx. NZMS 260 (T24:331-892) to Upper Gorge
	Upper Pohangina (Mana_10b)	Pohangina River – <del>source to</del> from Totara Reserve at approx. NZMS 260 (T23:534-167) to source
	Middle Pohangina (Mana_10c)	Pohangina River – <del>Totara Reserve to</del> from Mais Reach at approx. NZMS 260 (T23:467-053) to Totara Reserve
	Lower Pohangina (Mana_10d)	Pohangina River – <del>Mais Reach to</del> from Manawatu confluence at approx. NZMS 260 (T24:450-966) to Mais Reach
	Aokautere (Mana_10e)	Aokautere Stream – <del>source to</del> from Manawatu confluence at approx. NZMS 260 (T24:349-899) to source
Lower Manawatu (Mana_11)	Lower Manawatu (Mana_11a)	Manawatu River – <del>Teacher's College to</del> from Oroua confluence at approx. NZMS 260 (S24:167-826) to Teachers College
	Turitea (Mana_11b)	Turitea Stream – <del>source to</del> from Manawatu confluence at approx. NZMS 260 (T24:304-881) to source
	Kahuterawa (Mana_11c)	Kahuterawa Stream – <del>source to</del> Manawatu confluence at approx. NZMS 260 (S24:292-876) to source
	Upper Mangaone Stream (Mana_11d)	Mangaone Stream – <del>source to</del> from Milson Line at approx. NZMS 260 (T24:311-953) to source
	Lower Mangaone Stream (Mana_11e)	Mangaone Stream – <del>Milson Line to</del> from Manawatu confluence at approx. NZMS 260 (S24:283-872) to Milson Line
	Main Drain (Mana_11f)	Main Drain catchment (including Taonui Stream) <del>to</del> from Manawatu confluence (including Taonui Stream) at approx. NZMS 260 (S24:181-836) to source
Oroua (Mana_12)	Upper Oroua (Mana_12a)	Oroua River – <del>source to</del> from Almadale at approx. NZMS 260 (T23:365-113) to source
	Middle Oroua (Mana_12b)	Oroua River – <del>Almadale from</del> Awahuri Bridge at approx. NZMS 260 (S23:243-002) to Almadale
	Lower Oroua (Mana_12c)	Oroua River – <del>Awahuri Bridge to</del> from Manawatu confluence at approx NZMS 260 (S24:167-826) to Awahuri Bridge
	Kiwitea (Mana_12d)	Kiwitea Stream – <del>source to</del> from Oroua confluence at approx. NZMS 260 (T23:309-066) to source
	Makino (Mana_12e)	Makino Stream – <del>source to</del> from Oroua confluence at approx. NZMS 260 (S23:243-004) to source
Coastal Manawatu (Mana_13)	Coastal Manawatu (Mana_13a)	Manawatu River – <del>Oroua confluence to</del> from mouth* at approx NZMS 260 (S24:977-788) to Oroua confluence (excluding the Manawatu River from the Cross-river CMA boundary at approx. NZMS 260 S24:009-766 to the mouth*)

<sup>2</sup> Note to the hearing panel: This is a new table, but the information comes from the first three columns of Table D.2 in the Proposed One Plan

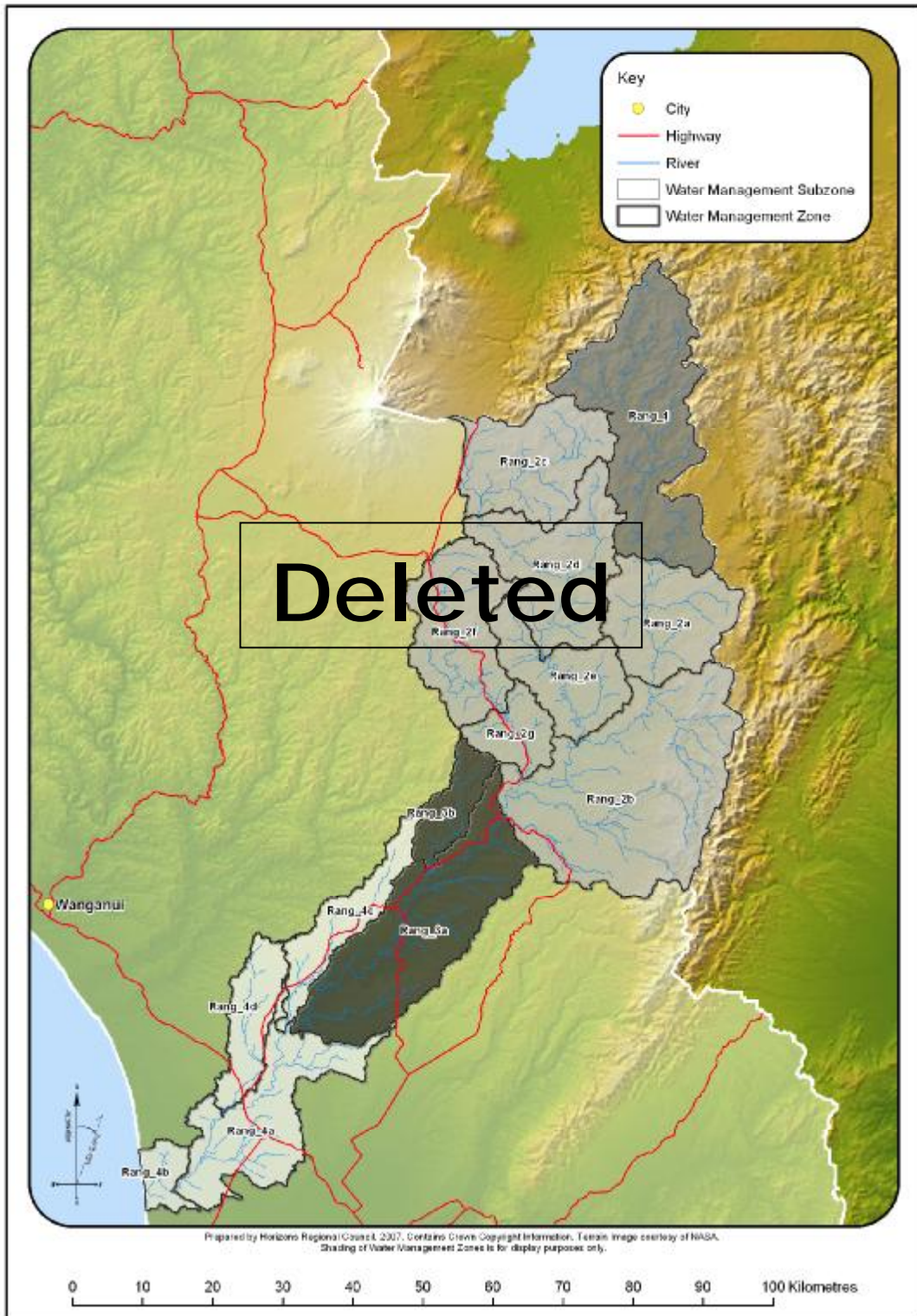
\* Includes all inflowing tributaries and surrounding catchment area unless otherwise specified



Table Ba2: Description of Manawatu Catchment Surface Water Management Zones\* and Sub-zones<sup>2</sup>

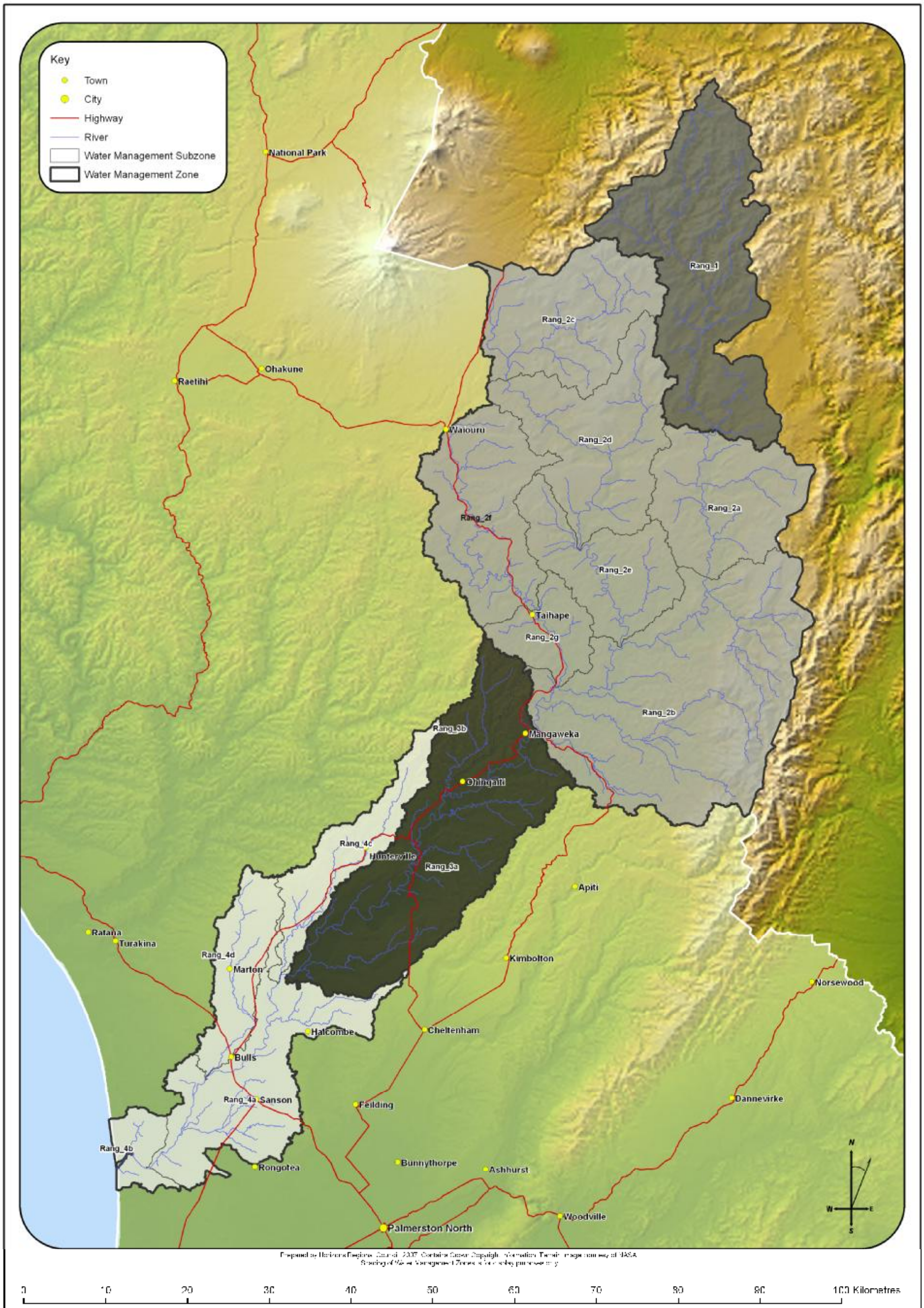
Management Zone	Management Sub-zone	Sub-zone Description <sup>3</sup>
	Upper Tokomaru (Mana_13b)	Tokomaru River <del>source to</del> <u>from Horseshoe Bend at approx. NZMS 260 (S24:241-768) to source</u>
	Lower Tokomaru (Mana_13c)	Tokomaru River <del>Horseshoe Bend to</del> <u>from Manawatu confluence at approx. NZMS 260 (S24:134-727) to Horseshoe Bend</u>
	Mangaore (Mana_13d)	Mangaore River <del>source to</del> <u>from Manawatu confluence at approx. NZMS 260 (S24:123-717) to source</u>
	Koputaroa (Mana_13e)	Koputaroa Stream <del>source to</del> <u>from Manawatu confluence at approx. NZMS 260 (S24:106-708) to source</u>
	Foxton Loop (Mana_13f)	Manawatu River <del>at SH1 to</del> <u>from downstream limit of Whirikino Cut at approx. NZMS 260 (S24:010-769) to SH 1</u>





**Map D:3** Rangitikei Catchment Water Management Zones and Sub-zones





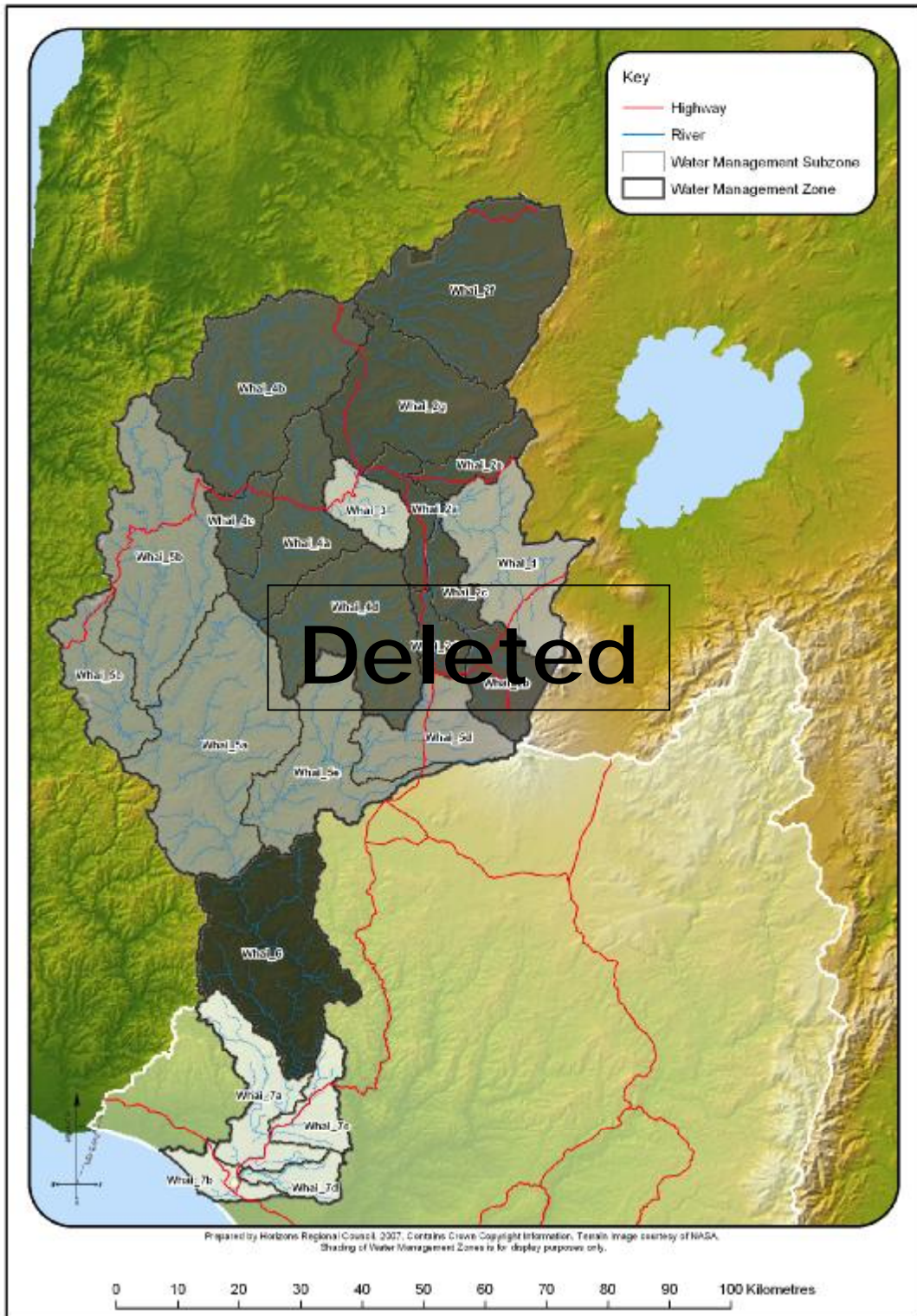
**Map Ba 3:** Rangitikei Catchment - Surface Water Management Zones\* and Sub-zones (refer to Table Ba3 for Water Management Sub-zone names).

Table Ba3: Description of Rangitikei Catchment Surface Water Management Zones\* and Sub-zones<sup>4</sup>

Management Zone	Sub-zone	Sub-zone Description <sup>†</sup>
Upper Rangitikei (Rang_1)	Upper Rangitikei	Rangitikei River <del>source to</del> <u>from</u> Makahikatoa Stream at approx. NZMS 260 (U21:726-888)
Middle Rangitikei (Rang_2)	Middle Rangitikei (Rang_2a)	Rangitikei River <del>Makahikatoa Stream to</del> <u>from</u> Pukeokahu at approx. NZMS 260 (U21:713-708) <u>to</u> Makahikatoa Stream
	Pukeokahu – Mangaweka (Rang_2b)	Rangitikei River <del>main stem – Pukeokahu to</del> <u>from</u> Mangaweka at approx. NZMS 260 (T22:504-513) <u>to</u> Pukeokahu
	Upper Moawhango (Rang_2c)	Moawhango River <del>source to</del> <u>from</u> Moawhango Dam at approx. NZMS 260 (T20:469-960) <u>to</u> source
	Middle Moawhango (Rang_2d)	Moawhango River <del>Dam to</del> <u>from</u> Moawhango Township at approx. NZMS 260 (T21:557-745) <u>to</u> Moawhango Dam
	Lower Moawhango (Rang_2e)	Moawhango River <del>Moawhango Township to</del> <u>from</u> Rangitikei confluence at approx. NZMS 260 (T21:609-623) <u>to</u> Moawhango Township
	Upper Hautapu (Rang_2f)	Hautapu River <del>source to</del> <u>from</u> Taihape at approx. NZMS 260 (T21:506-670) <u>to</u> source
	Lower Hautapu (Rang_2g)	Hautapu River <del>Taihape to</del> <u>from</u> Rangitikei confluence at approx. NZMS 260 (T22:529-574) <u>to</u> Taihape
Lower Rangitikei (Rang_3)	Lower Rangitikei (Rang_3a)	Rangitikei River <del>Mangaweka to</del> <u>from</u> Onepuhi at approx. NZMS 260 (S23: 201- 222) <u>to</u> Mangaweka
	Makohine (Rang_3b)	Makohine Stream <del>source to</del> <u>from</u> Rangitikei confluence at approx. NZMS 260 (T22:400-443) <u>to</u> source
Coastal Rangitikei (Rang_4)	Coastal Rangitikei (Rang_4a)	Rangitikei River <del>Onepuhi to</del> <u>from</u> McKelvies at approx. NZMS 260 (S24:033-985) <u>to</u> Onepuhi
	Tidal Rangitikei (Rang_4b)	Rangitikei River <del>McKelvie to</del> <u>from</u> the <i>mouth</i> <sup>†</sup> at approx. NZMS 260 (S24:991-984) <u>to</u> McKelvies (excluding the Rangitikei River from the Cross-river CMA boundary at approx. NZMS 260 S23:009-001 <u>to</u> the <i>mouth</i> <sup>†</sup> )
	Porewa (Rang_4c)	Porewa Stream <del>source to</del> <u>from</u> Rangitikei confluence at approx. NZMS 260 (S23:190-212) <u>to</u> source
	Tutaenui (Rang_4d)	Tutaenui Stream <del>source to</del> <u>from</u> Rangitikei confluence at approx. NZMS 260 (S23:101-095) <u>to</u> source

<sup>4</sup> Note to the hearing panel: This is a new table, but the information comes from the first three columns of Table D.2 in the Proposed One Plan

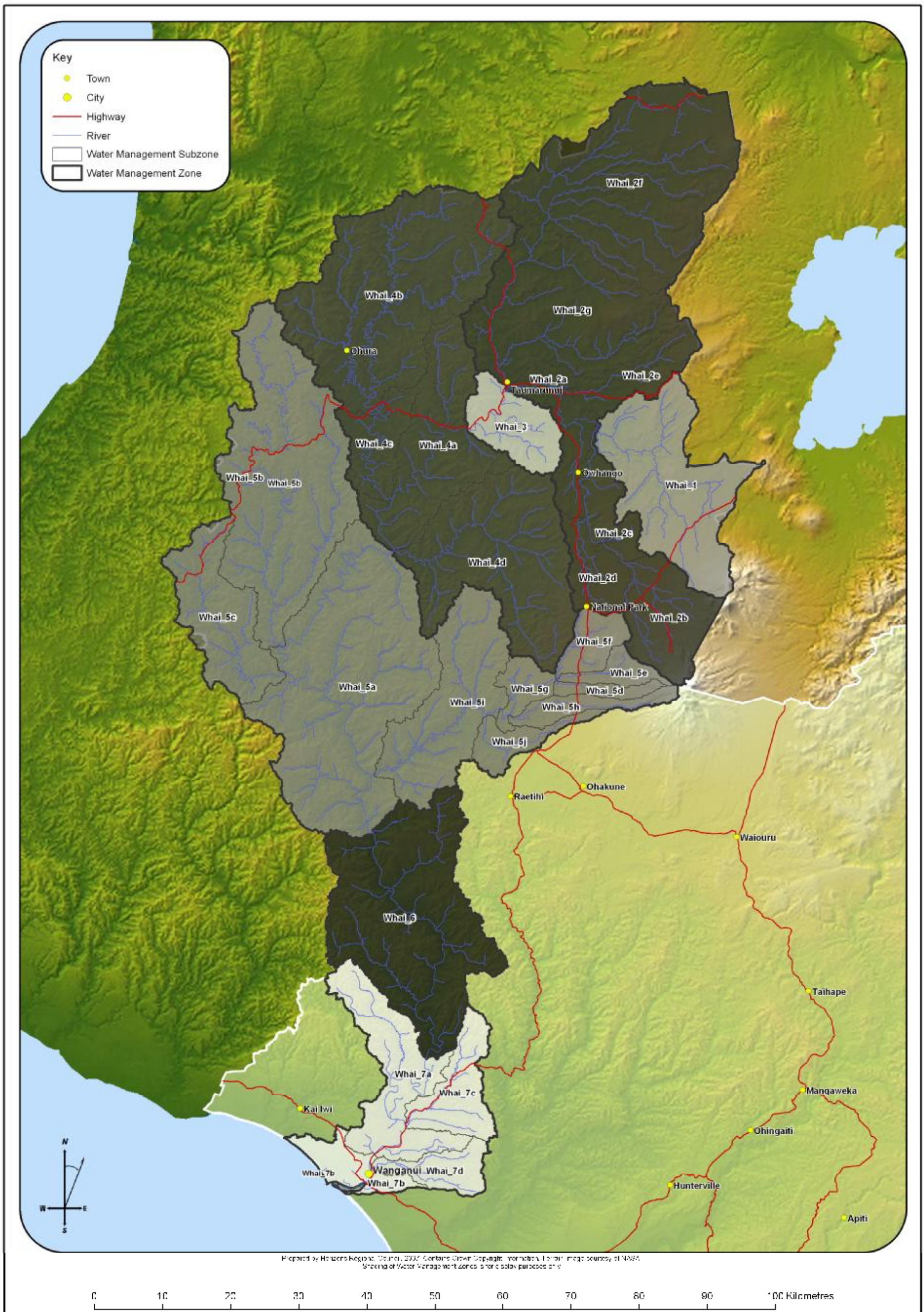
<sup>†</sup> Includes all inflowing tributaries and surrounding catchment area unless otherwise specified.



**Map D:4** Whanganui Catchment Water Management Zones and Sub-zones







Map Ba 4: Whanganui Catchment - Surface Water Management Zones\* and Sub-zones (refer to Table Ba4 for Water Management Sub-zone names).

Table Ba4: Description of Whanganui Catchment Surface Water Management Zones\* and Sub-zones<sup>5</sup>

Management Zone	Sub-zone	Sub-zone Description <sup>*</sup>
Upper Whanganui (Whai_1)	Upper Whanganui	Whanganui River – <del>source to from</del> Whakapapa confluence at approx. NZMS 260 (S19: 189-499) to source
Cherry Grove (Whai_2)	Cherry Grove (Whai_2a)	Whanganui River – <del>Whakapapa confluence to from</del> Cherry Grove at approx. NZMS 260 (S18:057-545) to Whakapapa confluence
	Upper Whakapapa (Whai_2b)	Whakapapa River – <del>source to from</del> Footbridge at approx. NZMS 260 (S19: 226-293) to source
	Lower Whakapapa (Whai_2c)	Whakapapa River – <del>Footbridge to from</del> Whanganui confluence at approx. NZMS 260 (S19: 189-499) to Footbridge
	Piopiotea (Whai_2d)	Piopiotea Stream – <del>source to from</del> Whakapapa confluence at approx. NZMS 260 (S19:174-356) to source
	Pungapunga (Whai_2e)	Pungapunga River – <del>source to from</del> Whanganui confluence at approx. NZMS 260 (S18:124-546) to source
	Upper Ongarue (Whai_2f)	Ongarue River – <del>source to from</del> Waihuka Stream confluence at approx. NZMS 260 (S18:108-785) to source
	Lower Ongarue (Whai_2g)	Ongarue River – <del>Waihuka Stream to from</del> Whanganui confluence at approx. NZMS 260 (S18:056-547) to Waihuka Stream
Te Maire (Whai_3)	Te Maire	Whanganui River – <del>Cherry Grove to from</del> Te Maire at approx. NZMS 260 (S19: 998-490) to Cherry Grove
Middle Whanganui (Whai_4)	Middle Whanganui (Whai_4a)	Whanganui River – <del>Te Maire to from</del> Retaruke confluence (Wades Landing/Whakahore) at approx. NZMS 260 (R19: 886-306) to Te Maire
	Upper Ohura (Whai_4b)	Ohura River – <del>source to from</del> Tokorima at approx. NZMS 260 (R18: 863-521) to source
	Lower Ohura (Whai_4c)	Ohura River – <del>Tokorima to from</del> Whanganui confluence at approx. NZMS 260 (R19:887-386) to Tokorima
	Retaruke (Whai_4d)	Retaruke River – <del>source to from</del> Whanganui confluence at approx. NZMS 260 (R19:890-309) to source
Pipiriki (Whai_5)	Pipiriki (Whai_5a)	Whanganui River – <del>Retaruke confluence to from</del> Pipiriki at approx. NZMS 260 (R21: 859-897) to Retaruke confluence
	Tangarakau (Whai_5b)	Tangarakau River – <del>source to from</del> Whanganui confluence at approx. NZMS 260 (R20:714-175) to source
	Whangamomona (Whai_5c)	Whangamomona River – <del>source to from</del> Whanganui confluence at approx. NZMS 260 (R20:731-130) to source
	Upper Manganui o te Ao (Whai_5d)	Manganui o te Ao River – <del>source to Hoihenga Road (S20:047-077) from</del> Makatote confluence at approx. NZMS 260 S20:129-120 to source
	Makatote (Whai_5e)	Makatote River from the confluence with the Manganui o Te Ao River at approx. NZMS 260 S20:129-120 to source
	Waimarino (Whai_5f)	Waimarino Stream from the confluence with the Makatote River at approx. NZMS 260 S20:129-120 to source
	Middle Manganui o te Ao (Whai_5g)	Manganui o te Ao River from Hoihenga Road at approx. NZMS 260 S20:047-077 to Makatote confluence
	Mangaturuturu (Whai_5h)	Mangaturuturu River from the confluence with the Manganui o te Ao River at approx. NZMS 260 S20:057-067 to source
	Lower Manganui o te Ao (Whai_5ei)	Manganui o te Ao River – <del>Hoihenga Road to from</del> Whanganui confluence at approx. NZMS 260 (R20:861-979) to Hoihenga Road.
	Orautoha (Whai_5j)	Orautoha Stream from the confluence with the Manganui o te Ao River at approx. NZMS 260 S20:026-067 to source
Paetawa (Whai_6)	Paetawa	Whanganui River – <del>Pipiriki to from</del> Paetawa at approx. NZMS 260 (S22: 937-566) to Pipiriki
Lower Whanganui (Whai_7)	Lower Whanganui (Whai_7a)	Whanganui River – <del>Paetawa to from</del> Aramoho Bridge at approx. NZMS 260 (R22:858-420) to Paetawa
	Coastal Whanganui (Whai_7b)	Whanganui River – <del>Aramoho Bridge to from</del> mouth* at approx. NZMS 260 (R22:797-328) to Aramoho Bridge (excluding the Whanganui River from the Cross-river CMA boundary at approx. NZMS 260 R22:848-380 to the mouth*)
	Upokongaro (Whai_7c)	Upokongaro River – <del>source to from</del> Whanganui confluence at approx. NZMS 260 (S22:908-463) to source
	Matarawa (Whai_7d)	Matarawa River – <del>source to from</del> Whanganui confluence at approx. NZMS 260 (R22:857-403) to source

Includes all inflowing tributaries and surrounding catchment area unless otherwise specified.

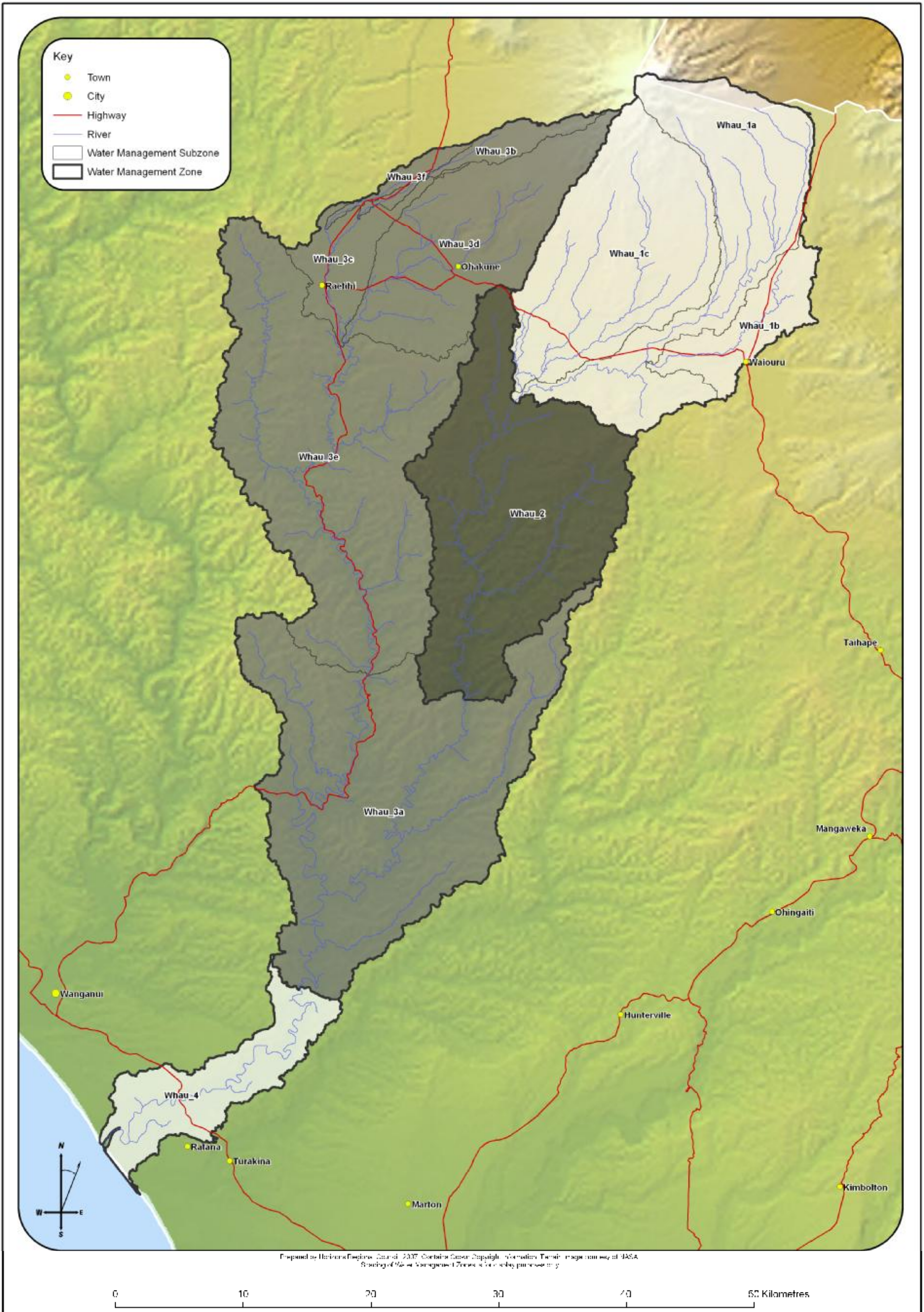
<sup>5</sup> Note to the hearing panel: This is a new table, but the information comes from the first three columns of Table D.2 in the Proposed One Plan

\* Includes all inflowing tributaries and surrounding catchment area unless otherwise specified.



**Map D-5** Whangaehu Catchment Water Management Zones and Sub-zones





**Map Ba 5:** Whangaehu Catchment - Surface Water Management Zones\* and Sub-zones (refer to Table Ba5 for Water Management Sub-zone names).



Table Ba5: Description of Whangaehu Catchment Surface Water Management Zones\* and Sub-zones<sup>6</sup>

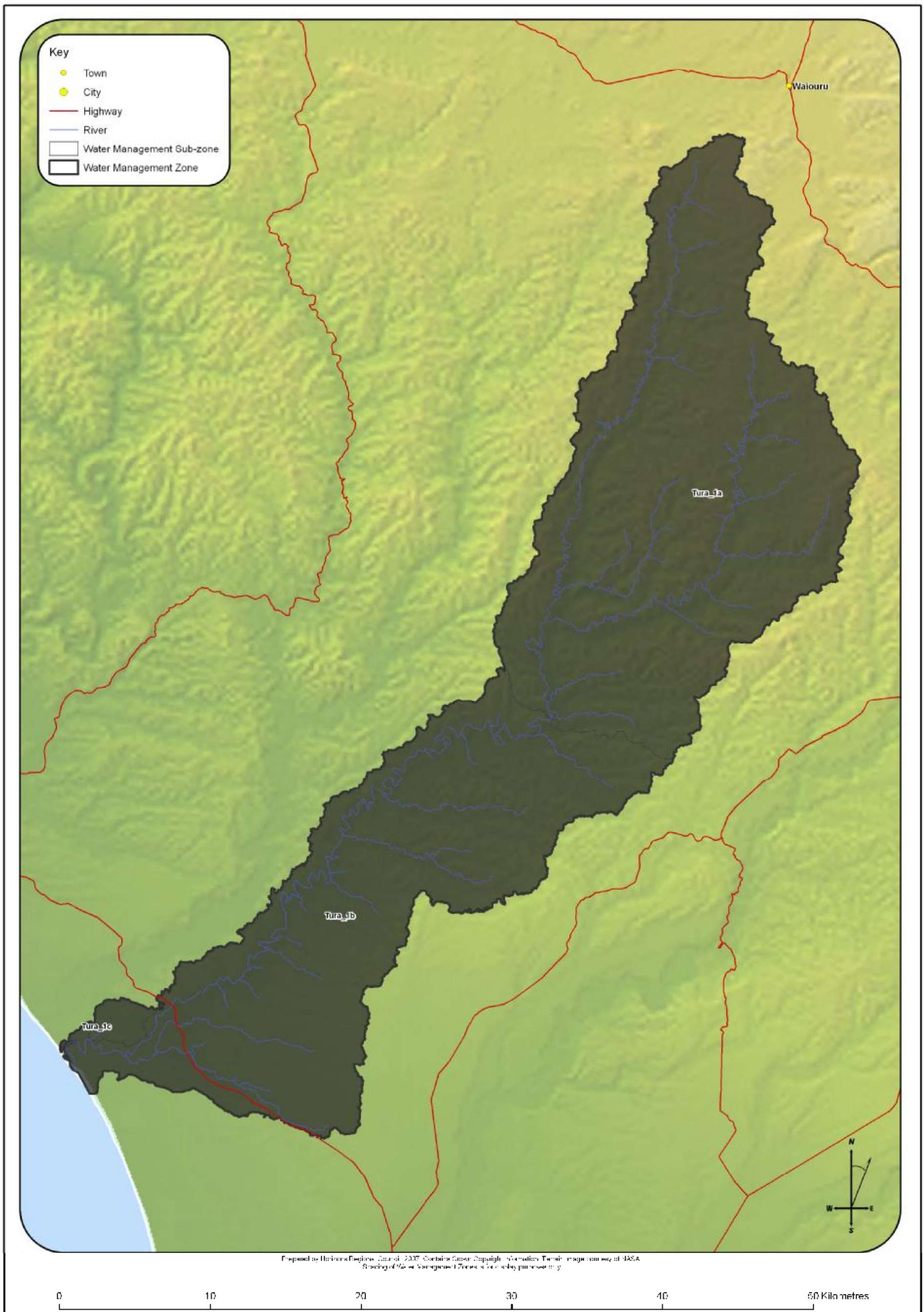
Management Zone	Sub-zone	Sub-zone Description <sup>*</sup>
Upper Whangaehu (Whau_1)	Upper Whangaehu (Whau_1a)	Whangaehu River – <del>source to</del> from Karioi at approx. NZMS 260 (S21: 218-864) <del>to source</del>
	Waitangi (Whau_1b)	Waitangi Stream – <del>source to</del> from Whangaehu confluence at approx. NZMS 260 (T21:316-888) <del>to source</del>
	Tokiahuru (Whau_1c)	Tokiahuru Stream – <del>source to</del> from Whangaehu confluence at approx. NZMS 260 (S21:219-865) <del>to source</del>
Middle Whangaehu (Whau_2)	Middle Whangaehu	Whangaehu River – <del>Karioi to</del> from Aranui at approx. NZMS 260 (S21: 175-627 to Karioi)
Lower Whangaehu (Whau_3)	Lower Whangaehu (Whau_3a)	Whangaehu River – <del>Aranui to</del> from Kauangaroa at approx. NZMS 260 (S22:045-397) <del>to Aranui (including Mangawhero River from Raupiu Road to Whangaehu confluence to Raupiu Road))</del>
	Upper Makotuku (Whau_3b)	Makotuku River – <del>source to</del> Water from water supply weir at approx. NZMS 260 (S20:103-011) <del>to source</del>
	Lower Makotuku (Whau_3c)	Makotuku River – <del>Water supply weir to</del> from Mangawhero confluence at approx. NZMS 260 (S20:080-903) <del>to water supply weir</del>
	Upper Mangawhero (Whau_3d)	Mangawhero River – <del>source to</del> from Makotuku confluence at approx. NZMS 260 (S20:080-903) <del>to source</del>
	Lower Mangawhero (Whau_3e)	Mangawhero River - Makotuku confluence to Raupiu Road at approx. NZMS 260 (S21:099-646)
	Makara (Whau_3f)	Makara Stream from the confluence with an unnamed tributary at approx. NZMS 260 S20:065-992 to source
Coastal Whangaehu (Whau_4)	Coastal Whangaehu	Whangaehu River – <del>Kauangaroa to</del> from <del>mouth</del> <sup>^</sup> at approx. NZMS 260 (R23:890-275) <del>to Kuangaroa (excluding the Whangaehu River from the Cross-river CMA boundary at approx. NZMS 260 R23:903-287 to mouth<sup>^</sup>)</del>

<sup>6</sup> Note to the hearing panel: This is a new table, but the information comes from the first three columns of Table D.2 in the Proposed One Plan  
<sup>\*</sup> Includes all inflowing tributaries and surrounding catchment area unless otherwise specified.



**Map D:6** Turakina Catchment Water Management Zones and Sub-zones





**Map Ba 6:** Turakina Catchment - Surface Water Management Zones\* and Sub-zones (refer to Table Ba6 for Water Management Sub-zone names).

Table Ba6: Description of Turakina Catchment Surface *Water Management Zone*\* and Sub-zones<sup>7</sup>

Management Zone	Sub-zone	Sub-zone Description <sup>*</sup>
Turakina (Tura_1)	Upper Turakina (Tura_1a)	Turakina River <del>source to</del> <u>from Otairie</u> at approx. NZMS 260 <del>(S22:236-471)</del> <u>to source</u>
	Lower Turakina (Tura_1b)	Turakina River <del>Otaire to</del> <u>from mouth<sup>*</sup></u> at approx. NZMS 260 <del>(S23:924-231)</del> <u>to Otairie (excluding the Turakina River from the Cross-river CMA boundary at approx. NZMS 260 S23:921-254 to the mouth<sup>*</sup>)</u>
	Ratana (Tura_1c)	Lakes Waipu and Oraekomiko and all surrounding catchment area

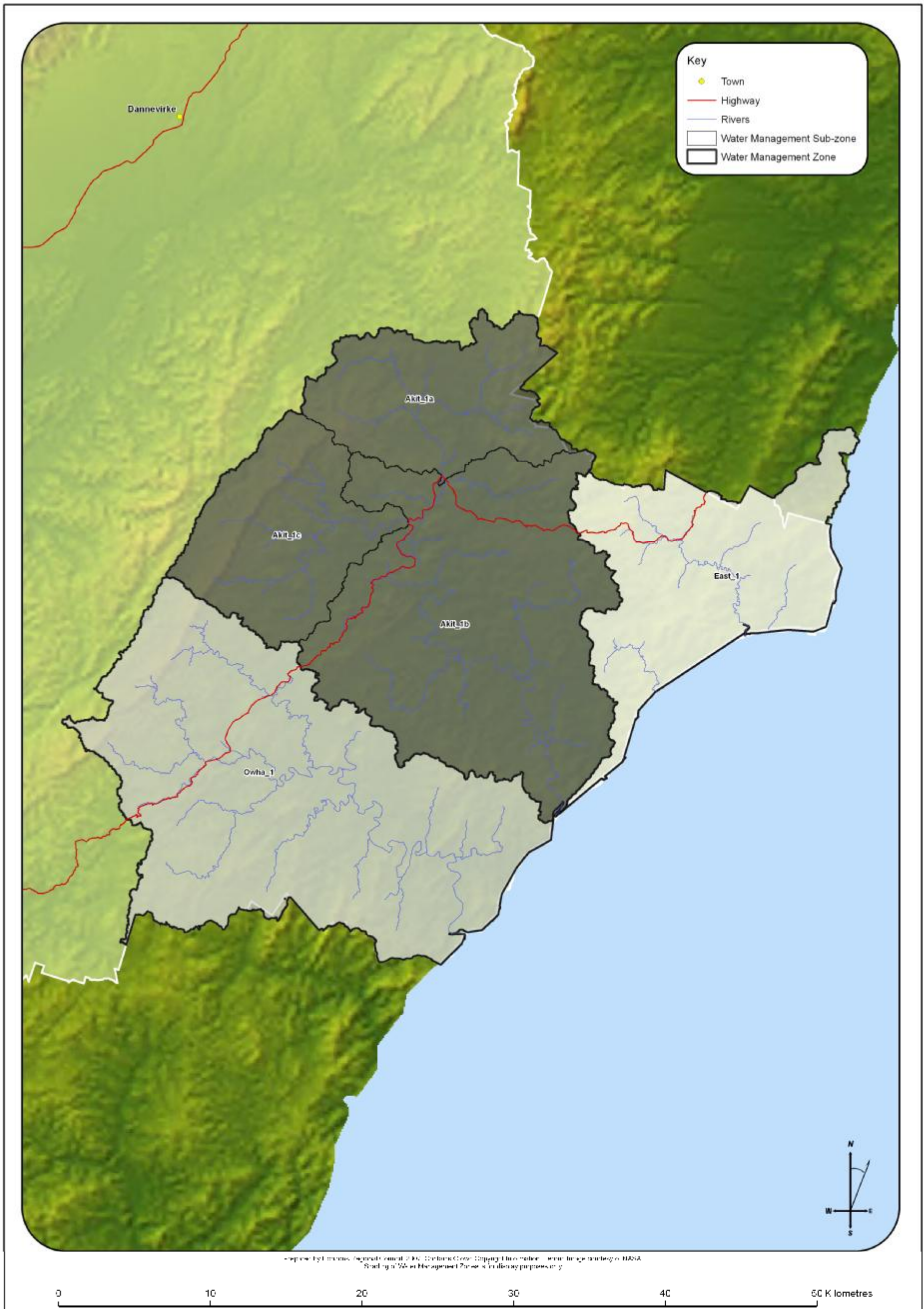
<sup>7</sup> Note to the hearing panel: This is a new table, but the information comes from the first three columns of Table D.2 in the Proposed One Plan

<sup>\*</sup> Includes all inflowing tributaries and surrounding catchment area unless otherwise specified.



**Map D:7** East Coast Water Management Zones and Sub-zones





**Map Ba 7:** East Coast - Surface *Water Management Zones\** and Sub-zones (refer to Table Ba7 for Water Management Sub-zone names).

Table Ba7: Description of East Coast Surface Water Management Zone\* and Sub-zones<sup>8</sup>

Management Zone	Sub-zone	Sub-zone Description <sup>*</sup>
East Coast (East_1)	East Coast	Wainui, Tautane and Waimata – whole catchments from <del>source to mouth</del> to source (excluding the Wainui River from the Cross-river CMA boundary at approx. NZMS 260 V24:115-735 to <del>mouth</del> )
Akitio (Akit_1)	Upper Akitio (Akit_1a)	Akitio River – <del>source to from</del> Weber Road at approx. NZMS 260 {U24: 919-832} to source
	Lower Akitio (Akit_1b)	Akitio River – <del>Weber Road to from</del> <del>mouth</del> at approx. NZMS 260 {U25:992-610} to Weber Road (excluding the Akitio River from the Cross-river CMA boundary at approx. NZMS 260 U25:915-554 to <del>mouth</del> )
	Waihi (Akit_1c)	Waihi Stream – <del>source to from</del> Akitio confluence at approx. NZMS 260 {U24:895-801} to source
Owahanga (Owha_1)	Owahanga	Owahanga River – <del>source to from</del> <del>mouth</del> at approx. NZMS 260 {U25:932-532} to source (excluding the Owahanga River from the Cross-river CMA boundary at approx. NZMS 260 U25:932-532 to the <del>mouth</del> )

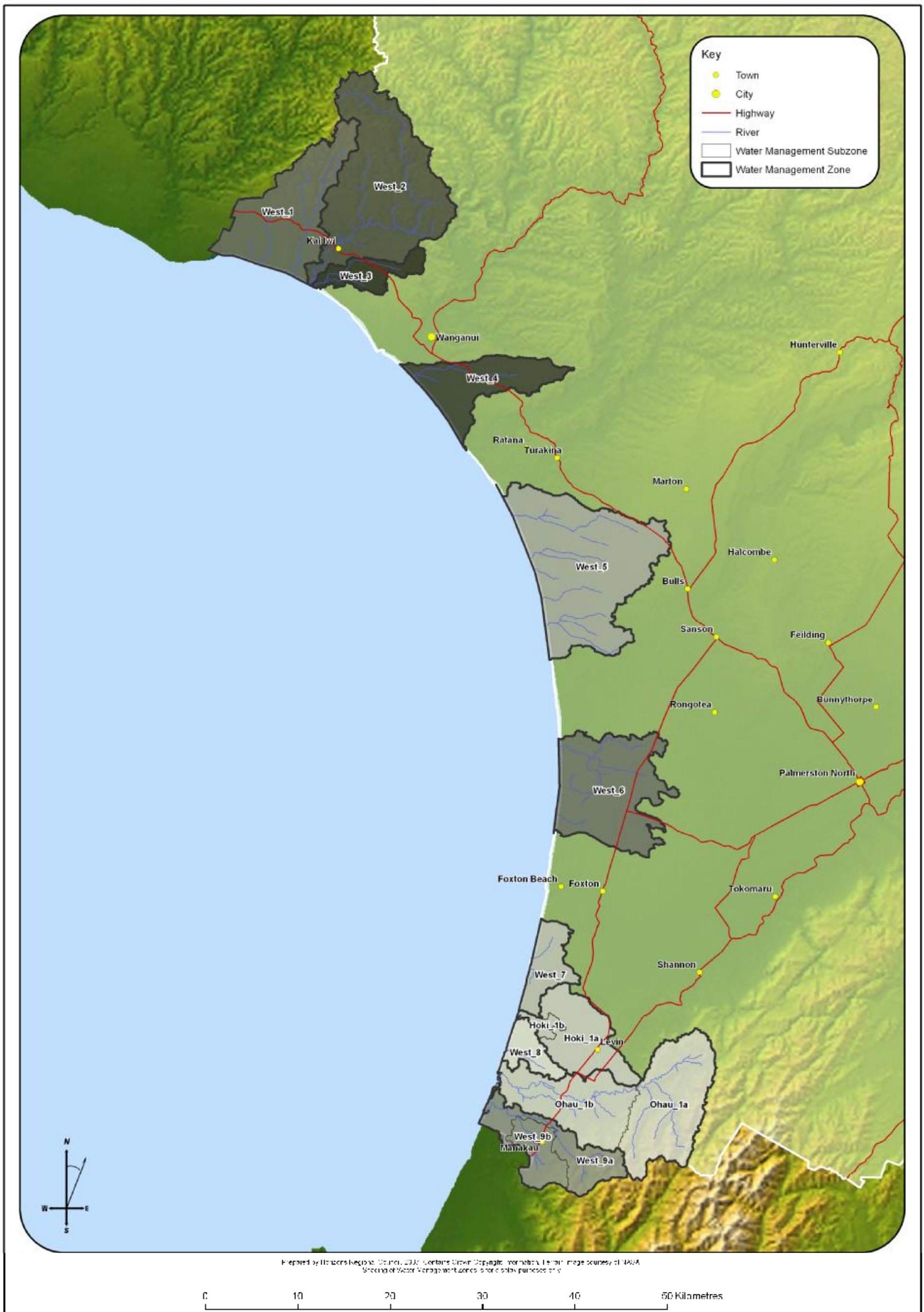
<sup>8</sup> Note to the hearing panel: This is a new table, but the information comes from the first three columns of Table D.2 in the Proposed One Plan  
<sup>\*</sup> Includes all inflowing tributaries and surrounding catchment area unless otherwise specified.



**Map D:8** West Coast Water Management Zones and Sub-zones







**Map Ba 8:** West Coast- Surface Water Management Zones\* and Sub-zones (refer to Table Ba8 for Water Management Sub-zone names).

Table Ba8: Description of West Coast Surface Water Management Zone\* and Sub-zones<sup>9</sup>

Management Zone	Sub-zone	Sub-zone Description <sup>*</sup>
Northern Coastal (West_1)	Northern Coastal	All coastal catchments and dune lakes between Kai Iwi and Waitotara catchments
Kai Iwi (West_2)	Kai Iwi	Kai Iwi Stream <del>—source to from</del> <u>mouth<sup>^</sup> at approx. NZMS 260 (R23:723-449) to source (excluding the Kai Iwi Stream from the Cross-river CMA boundary at approx. NZMS 260 R22:722-450 to the mouth<sup>^</sup>)</u>
Mowhanau (West_3)	Mowhanau	Mowhanau Stream <del>—source to from</del> <u>mouth<sup>^</sup> at approx. NZMS 260 (R22:725-447) to source (excluding the Mowhanau Stream from the Cross-river CMA boundary at approx. NZMS 260 R22:726-4448 to the mouth<sup>^</sup>)</u>
Kaitoke Lakes (West_4)	Kaitoke Lakes	Lakes Kaitoke, Pauri, Wiritoa, Kohata and all surrounding catchment area
Southern Whanganui Lakes (West_5)	Southern Whanganui Lakes	Lakes Vipan, Heaton, Bernard, William, Herbert, Hickson, Alice, Koitiata, Dudding and all surrounding catchment area
Northern Manawatu Lakes (West_6)	Northern Manawatu Lakes	All lakes and lagoons between Coastal Rangitikei and Coastal Manawatu and all surrounding catchment area
Waitarere (West_7)	Waitarere	All lakes and lagoons between Coastal Manawatu and Lake Horowhenua catchment and all surrounding catchment area
Lake Papaitonga (West_8)	Lake Papaitonga	Lake Papaitonga catchment
Waikawa (West_9)	Waikawa (West_9a)	Waikawa Stream <del>—source to from</del> <u>mouth<sup>^</sup> at approx. NZMS 260 (S25:908-548) to source (excluding the Waikawa Stream from the Cross-river CMA boundary at approx. NZMS 260 S25:915-554 to the mouth<sup>^</sup>)</u>
	Manukau (West_9b)	Manakau Stream from the confluence with the Waikawa Stream at approx. NZMS 260 S25:946-549 to source
Ohau (Ohau_1)	Upper Ohau (Ohau_1a)	Ohau River <del>—source to from</del> <u>Rongomatane at approx. NZMS 260 (S25:072-577) to source</u>
	Lower Ohau (Ohau_ba)	Ohau River <del>—Rongomatane to from</del> <u>mouth<sup>^</sup> at approx. NZMS 260 (S25:918-578) to Rongomatane (excluding the Ohau River from the Cross-river CMA boundary at approx. NZMS 260 S25:929-595 to the mouth<sup>^</sup>)</u>
Lake Horowhenua (Hoki_1)	Lake Horowhenua (Hoki_1a)	Whole lake catchment above Hokio Stream outlet
	Hokio (Hoki_1b)	Hokio Stream downstream of Lake Horowhenua outlet <u>(excluding the Hokio Stream from the Cross-river CMA boundary at approx. NZMS 260 S25:949-657 to the mouth<sup>^</sup>)</u>

<sup>9</sup> Note to the hearing panel: This is a new table, but the information comes from the first three columns of Table D.2 in the Proposed One Plan

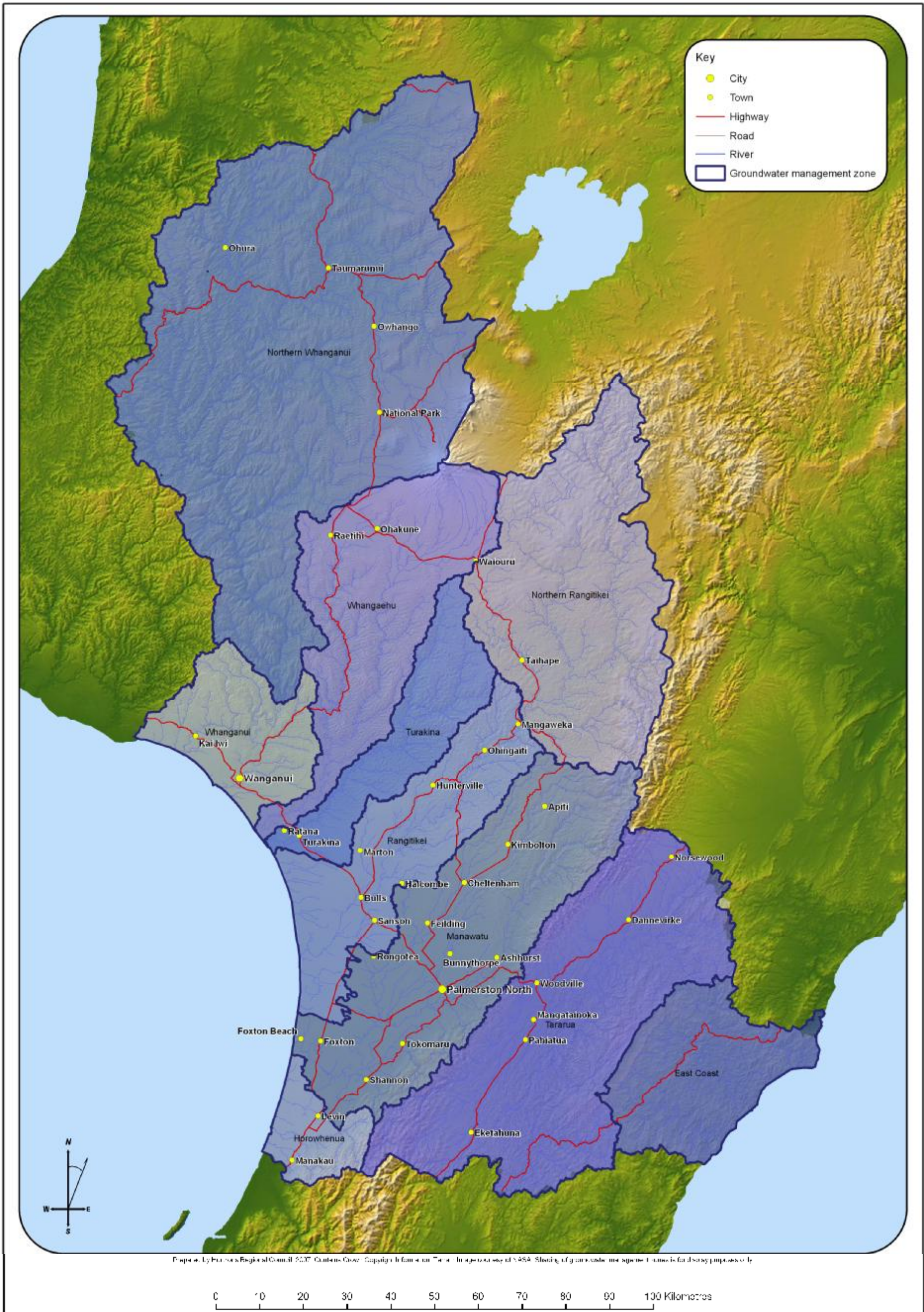
<sup>\*</sup> Includes all inflowing tributaries and surrounding catchment area unless otherwise specified.

**Part Ba1.3: Groundwater Management Zone Finder**



**Figure C:1** Groundwater Management Zones





**Map Ba 9: ZONE FINDER** showing Groundwater Management Zones (GWMZ) in the Manawatu-Wanganui Region (refer to Table Ba9 for Ground Water Management Zone names).



Table Ba9: Description of Groundwater Management Zones (GWMZ) <sup>10</sup>	
Ground Water Management Zone	Surface Water Management Zones within GWMZ
1-Whanganui	<u>Lower Whanganui (Whai_7)</u>
	<u>Northern Coastal (West_1)</u>
	<u>Kai Iwi (West_2)</u>
	<u>Mowhanau (West_3)</u>
	<u>Southern Wanganui Lakes (West_4)</u>
2-Whangaehu	<u>Upper Whangaehu (Whau_1)</u>
	<u>Middle Whangaehu (Whau_2)</u>
	<u>Lower Whangaehu (Whau_3)</u>
	<u>Coastal Whangaehu (Whau_4)</u>
3-Turakina	<u>Turakina (Tura_1)</u>
4-Rangitikei	<u>Lower Rangitikei (Rang_3)</u>
	<u>Coastal Rangitikei (Rang_4)</u>
	<u>Kaitoke Lakes (West_5)</u>
	<u>Northern Manawatu Lakes (West_6)</u>
5-Manawatu	<u>Middle Manawatu (Mana_10)</u>
	<u>Lower Manawatu (Mana_11)</u>
	<u>Oroua (Mana_12)</u>
	<u>Coastal Manawatu (Mana_13)</u>
6-Horowhenua	<u>Lake Horowhenua (Hoki_1)</u>
	<u>Ohau (Ohau_1)</u>
	<u>Waitarere (West_7)</u>
	<u>Papaitonga (West_8)</u>
	<u>Waikawa (West_9)</u>
7-Tararua	<u>Upper Manawatu (Mana_1)</u>
	<u>Weber – Tamaki (Mana_2)</u>
	<u>Upper Tamaki (Mana_3)</u>
	<u>Upper Kumeti (Mana_4)</u>
	<u>Tamaki – Hopelands (Mana_5)</u>
	<u>Hopelands (Mana_6)</u>
	<u>Tiraumea (Mana_7)</u>
	<u>Mangatainoka (Mana_8)</u>
	<u>Upper Gorge (Mana_9)</u>
<u>East Coast</u>	<u>Akitio (Akit_1)</u>
	<u>Owahanga (Owha_1)</u>
	<u>East Coast (East_1)</u>
<u>Northern Rangitikei</u>	<u>Upper Rangitikei (Rang_1)</u>
	<u>Middle Rangitikei (Rang_2)</u>
<u>Northern Whanganui</u>	<u>Upper Whanganui (Whai_1)</u>
	<u>Cherry Grove (Whai_2)</u>
	<u>Te Maire (Whai_3)</u>
	<u>Middle Whanganui (Whai_4)</u>
	<u>Pipiriki (Whai_5)</u>
	<u>Paetawa (Whai_6)</u>

<sup>10</sup> Note to the Hearing Panel: this is a new table but takes the information from the first two columns of the Table in Schedule C