

## Schedule C: Groundwater Management Quantity Zones

**USER GUIDE:** How to use the contents of this schedule

**Step 1:** Identify which Ground Water Management Zone your proposed abstraction lies in (go to Part 1.3 of Schedule Ba)

**Step 2:** Refer to Table C1 to identify which allocation limit applies to your Ground Water Management Zone

<b>Table C1: Allocation limits by Groundwater Management Zone</b>	
<b>GMZ</b>	<b>Annual Allocable Volume for GWMZ (x10<sup>6</sup>m<sup>3</sup>/y)</b>
<a href="#">Whanganui</a>	<a href="#">46</a>
<a href="#">Whangaehu</a>	<a href="#">122</a>
<a href="#">Turakina</a>	<a href="#">50</a>
<a href="#">Rangitikei</a>	<a href="#">75</a>
<a href="#">Manawatu</a>	<a href="#">166</a>
<a href="#">Horowhenua</a>	<a href="#">27</a>
<a href="#">Taranua</a>	<a href="#">239</a>
<a href="#">East Coast</a>	<a href="#">Unspecified</a>
<a href="#">Northern Rangitikei</a>	<a href="#">Unspecified</a>
<a href="#">Northern Whanganui</a>	<a href="#">Unspecified</a>

<b>Groundwater Management Zone (GWMZ) as mapped in schedule C</b>	<b>Surface Water Management Zones within GWMZ</b>	<b>Annual Allocable Volume for GWMZ (m<sup>3</sup>/y)</b>
<b>1 Whanganui</b>	Whai_7 West_1 West_2 West_3 West_4	<a href="#">53,158,000</a>
<b>2 Whangaehu</b>	Whau_1 Whau_2 Whau_3 Whau_4	<a href="#">109,627,000</a>
<b>3 Turakina</b>	Tura_1	<a href="#">95,741,000</a>
<b>4 Rangitikei</b>	Rang_3 Rang_4 West_5 West_6	<a href="#">58,815,000</a>
<b>5 Manawatu</b>	Mana_10 Mana_11 Mana_12	

	Mana_13	56,965,000
<b>6 Horowhenua</b>	Hoki_1	_____
	Ohau_1	
	West_7	
	West_8,	
	West_9	18,893,000
<b>7 Eastern</b>	Mana_1	_____
	Mana_2	
	Mana_3	
	Mana_4	
	Mana_5	
	Mana_6	
	Mana_7	
	Mana_8	
	Mana_9	16,578,000
<b>TOTAL<sup>1</sup></b>		<del>409,777,000<sup>2</sup></del>

<sup>1</sup> Columns 1 and 2 of this table have been moved to Schedule Ba

<sup>2</sup> Column 3 of this table has been deleted.

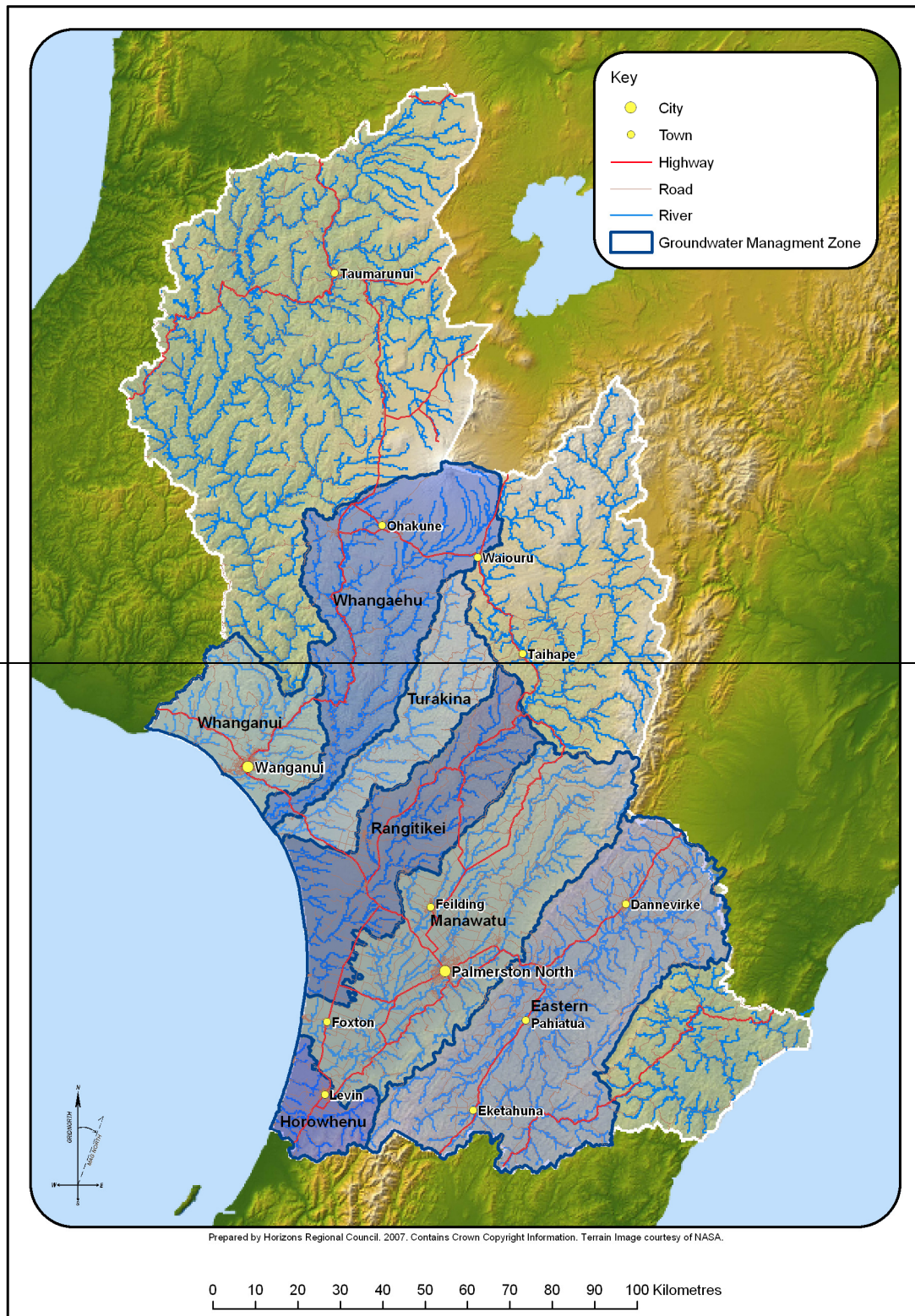


Figure C:1 Groundwater Management Zones<sup>3</sup>

<sup>3</sup> Map has been moved to Schedule Ba