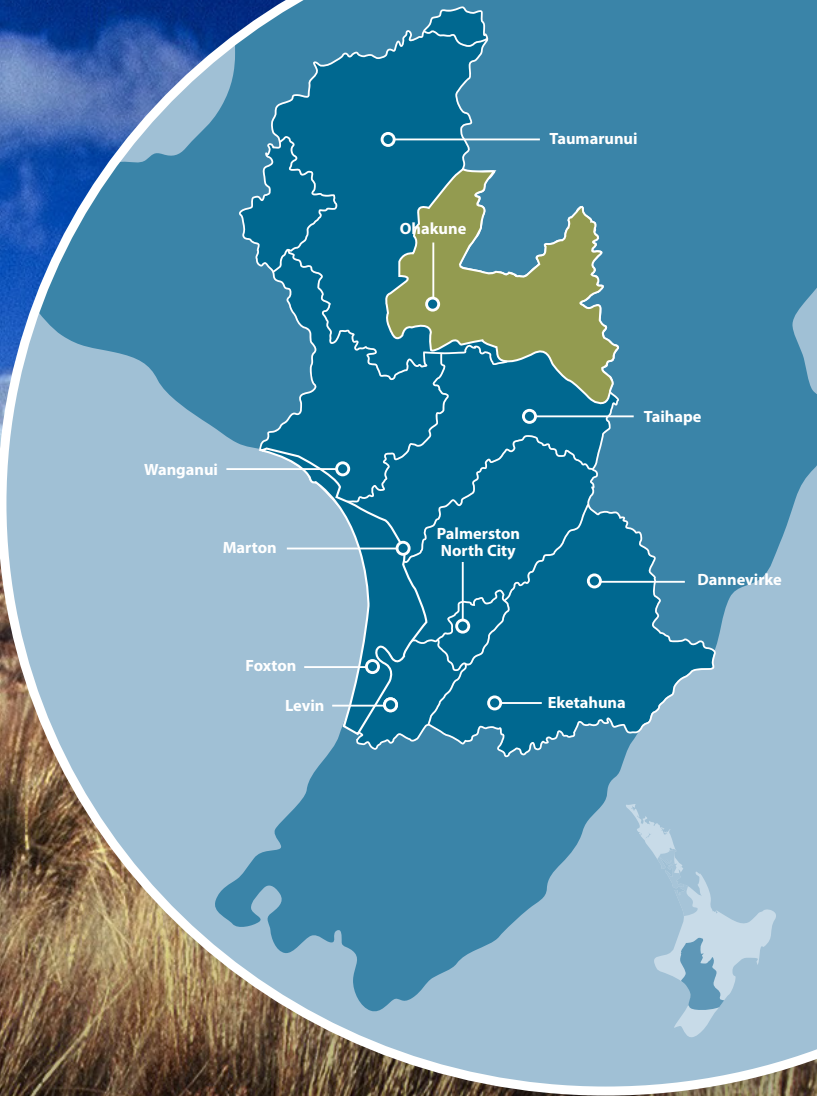


Plant List

This list contains suitable plants for the Tongariro Ecological Area. The list includes information on suitable habitat for each species and their environmental tolerances.

NAME		HEIGHT	SUITABLE HABITATS				SOIL MOISTURE			TOLERANCES/PALATABILITY			ENCOURAGES	
Common name	Species name	Height at maturity	Wetland	Riparian	Bush	Slope/Open	Wet	Damp	Free draining	Frost tolerance	Wind tolerance	Possum palatability	Birds	Bees
NARROW LEAVED GROUND COVER														
Flax, Haraheke	<i>Phormium tenax</i>	2.5m	✓	✓			✓	✓✓	✓	✓✓	✓✓		✓	
Mtn Flax, Wharariki	<i>Phormium cookianum</i>	1.5m		✓		✓			✓✓	✓✓	✓✓		✓	
Swamp sedge	<i>Carex virgata</i>	1m	✓	✓		✓	✓	✓✓		✓✓	✓✓			
Swamp toetoe	<i>Cortaderia toetoe</i>	2m	✓	✓		✓	✓	✓✓	✓	✓✓	✓✓			
Toetoe	<i>Cortaderia fulvida</i>	1.5m		✓		✓		✓	✓✓	✓✓	✓✓			
SHRUBS														
Koromiko	<i>Hebe stricta</i>	2m		✓		✓		✓	✓	✓✓	✓✓			✓
TREES														
Cabbage tree, Ti kouka	<i>Cordyline australis</i>	12m	✓	✓		✓	✓	✓✓	✓	✓✓	✓✓		✓	✓
Kohuhu	<i>Pittosporum tenuifolium</i>	8m		✓	✓	✓	✓	✓✓	✓	✓✓	✓✓		✓	
Lemonwood, Tarata	<i>Pittosporum eugenioides</i>	12m		✓	✓	✓		✓✓	✓	✓✓	✓✓			✓



Native Plants for Riparian Margins

Tongariro Ecological Area



For further information about riparian planting contact:
Horizons Regional Council, Freshwater Management Team
0508 800 800 | **www.horizons.govt.nz**



Native Plants for Riparian Margins

Tongariro Ecological Area

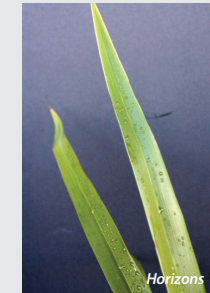
Across are native plants suitable for riparian margins in the Tongariro Ecological Area. Included at the back of the information sheet is a plant list with each species environmental tolerances and habitat suitability.

Unless otherwise indicated, all photos have been provided by Taranaki Regional Council

Narrow leaved ground cover



Flax, Harakeke
Phormium tenax



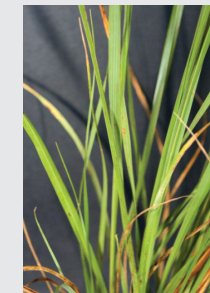
Mtn flax, Wharariki
Phormium cookianum



Swamp Sedge
Carex virgata



Swamp Toetoe
Cortaderia toetoe



Toetoe
Cortaderia fulvida



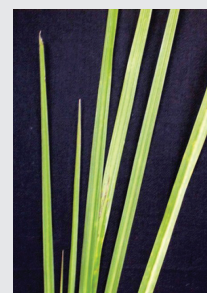
Shrubs



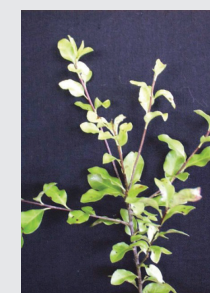
Koromiko
Hebe stricta



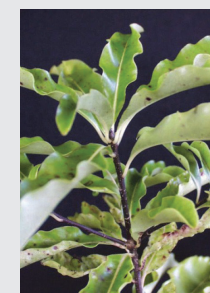
Trees



Cabbage Tree
Cordyline australis



Kohuhu
Pittosporum tenuifolium



Lemonwood
Pittosporum eugenioides

