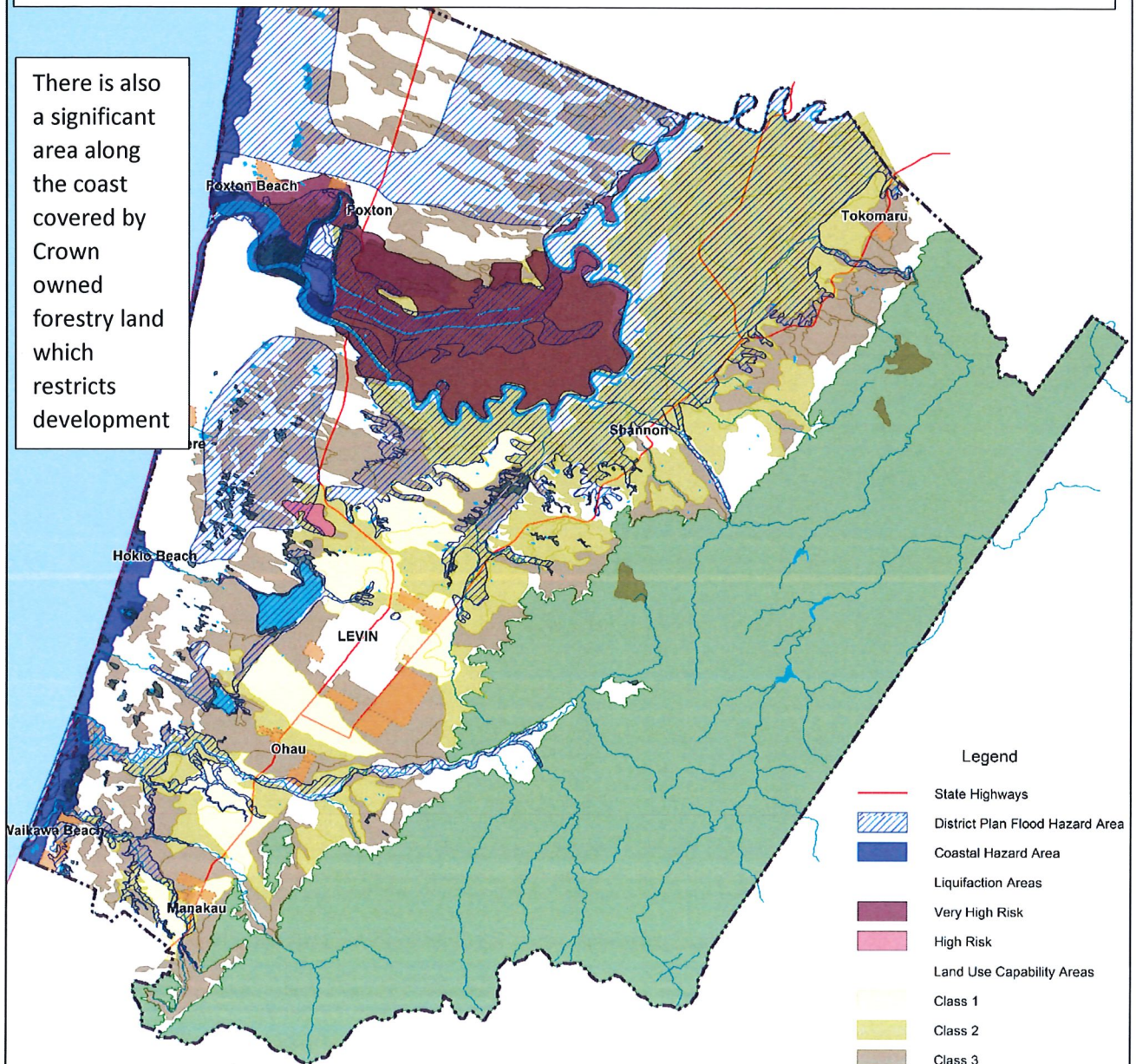


The map identifies the land (shown as white) that is left for potential development, once the district's Class 1, 2 and 3 soil, Hill Country land, high risk liquefaction areas, coastal hazard areas, flooding hazard areas and water bodies have been taken into account

The orange areas reflect the growth areas identified in the Horowhenua Growth Strategy (adopted 2018).

There is also a significant area along the coast covered by Crown owned forestry land which restricts development



Legend

- State Highways
- District Plan Flood Hazard Area
- Coastal Hazard Area
- Liquefaction Areas
- Very High Risk
- High Risk
- Land Use Capability Areas
- Class 1
- Class 2
- Class 3
- Hill Country Landscape Domain
- Identified Growth Areas
- Swamp Areas
- River Areas
- Rivers Centrelines
- Lakes
- HDC Boundary
- Tasman Sea

Sources: New Zealand Land Resource Inventory - LandCare Research

Horizons Regional Council

Land Information New Zealand

LUC Class	Area (Ha)	% TA AREA
1	4942	4.66
2	19668	18.49
3	18881	17.67

